



IUCN
WORLD PARKS
CONGRESS
SYDNEY 2014

Marine Journey

A guide to the marine & polar events at WPC 2014





World Parks Congress 2014

Occurring only once a decade, the IUCN World Parks Congress is a landmark global forum on issues surrounding protected areas. The Congress will share knowledge and innovation, and set the agenda for protected areas conservation for the decade to come.

The event itself is set to have a strong marine presence with a devoted marine crosscutting stream with a multitude of ocean-based events. Moreover, there will be a real drive to develop programmes based primarily on marine ecosystems which, to date, have been vastly overshadowed by attempts to manage, protect and sustainably use terrestrial ecosystems. In a time when marine ecosystems are already being affected by ocean warming, acidification and lowering oxygen levels, along with the ever-present impacts of overfishing and pollution, the Congress will strive to create innovative and dynamic solutions based on protected areas that will continue to be implemented for the coming decades.

http://www.iucn.org/about/work/programmes/marine/marine_our_work/marine_mpas/wpc2014/



Ocean events by numbers

Of the 225 total sessions/events with a marine focus or some marine content, 150 are marine-focused sessions/events, including:

- 57 marine-focused stream sessions
- 54 Ocean+ Pavilion events
- 27 side events
- 4 lunchtime debates
- 5 Google+ Hangouts



Australian Government
Paris Australia



Marine VIPs at the 2014 World Parks Congress



H.E. Henri Puna
Prime Minister, Cook
Islands



Sylvia Earle
Mission Blue
San Francisco, USA



Nilufer Oral
IUCN Council Focal Point for
Oceans



Christophe Lefèbre
Agence des Aires Marines
Protégées



John Baxter
Honorary Professor St Andrews
University and Heriot-Watt University



Richard Vevers
Executive Director
Catlin Seaview Survey



Ocean+ Pavilion

The Ocean+ Pavilion will bring us closer to the fascinating world of oceans and poles. Set up to showcase films and photos, launch new products and demonstrate cutting-edge technologies, it will also promote the exchange of knowledge and views on protection and management of these very special and productive ecosystems. The pavilion will be open daily from **08.30 to 21.00**. On top of the individual events, there will be several permanent displays:

Ocean+ WebTV

Highlighting and promoting the Marine theme at the WPC. At once interactive and educational, Oceanplus.tv targets both marine-conservation professionals and the wider public. It allows experts and participants to keep a record of their exchanges and watch events they were not able to attend. Among the general public, this platform aims to raise awareness of the services rendered by marine protected areas and oceans at large. Plenary sessions are broadcasted live and daily magazines are also offered throughout the congress to summarize proceedings and provide context. They contain highlights, interviews with prominent speakers, and a recap on each day's outcomes.

WebTV team : Marie Aude Sevin (marie-aude.sevin@aires-marines.fr), Bilal Ahmad Khan (bilal-ahmad.khan@aires-marines.fr), Agnès Poiret (agnes.poiret@aires-marines.fr)

For more information, visit <http://www.oceanplus.tv/en/>

Available every evening on Ocean+ WebTV:

- o Together for Ocean+, November 13th
- o A coherent network at the right scale, November 14th
- o Involving different stakeholders & civil society, November 15th
- o Effectively-managed MPAs and not paper ones, November 17th
- o Decide and Finance, November 18th,
- o From promises to action, November 19th



Google displays and Liquid Galaxy

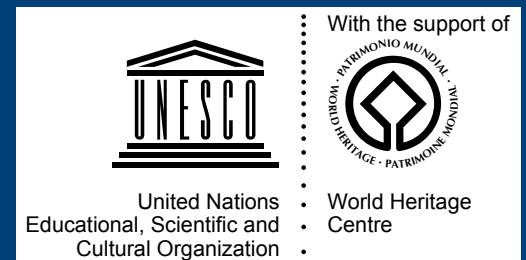
Come and meet the Google team at the Congress! See the backpacker cameras and underwater camera systems that provide you with Street View for the environment, and take a dive into our three-dimensional world of Google Earth and Maps with our new interactive screen. During the Congress, see launches of new tools and imagery that will enable you to dive deeper into the blue sphere of our planet, and through this gain greater access to information to help guide effective management and decisions on of protected areas.

Google+ Hangouts:

Google, Mission Blue, and the Online Ocean Symposium are partnering to deliver a series of Google+ Hangouts on Air to open up the discussion about ocean issues to our online WPC audience! Join participants, LIVE and on-the-ground in Sydney, as they discuss innovative ocean survey technologies, large-scale MPAs, high seas conservation, locally-managed MPAs, and the Great Barrier Reef rezoning.

Unesco World Heritage "Digital Aquarium: Dive into the Brazilian Atlantic Islands, a World Heritage site"

With the aquarium on a 55 inch TV-screen as a non-stop backdrop, the Ocean+ Pavilion, UNESCO and Brazil' World Heritage marine site, invites you to enjoy the scenery and why not take your own "selfi-picture" with a fantastic back-ground!



Mission Blue Sydney Exclusive!

World-renowned oceanographer Sylvia Earle will present her ground-breaking documentary Mission Blue at an exclusive Sydney viewing during World Parks Congress. Exploring the most important issues facing the world's marine habitats Earle – the globally renowned 'Voice of the Ocean' – highlights the wonders and challenges in the Gulf of Mexico, the Galapagos Islands, Australia's Coral Sea, and beyond.

With urgent issues threatening oceans, including pollution, climate change and over-fishing, Mission Blue presents a world changing solution, and the need to act now. Appearing live at the event, Earle's Mission Blue is particularly pertinent in Australia where the world's largest network of marine parks and sanctuaries is facing an uncertain future.

Saturday 15 November, 8pm (doors open 7.30pm) at the University of Sydney, New Law School Lecture Theatre 101 (map available upon booking). Seats are limited – book now at www.missionblue-film.eventbrite.com.au. WPC delegates should allow up to an hour to get to this venue from the WPC given traffic flow into the city for a Saturday evening.



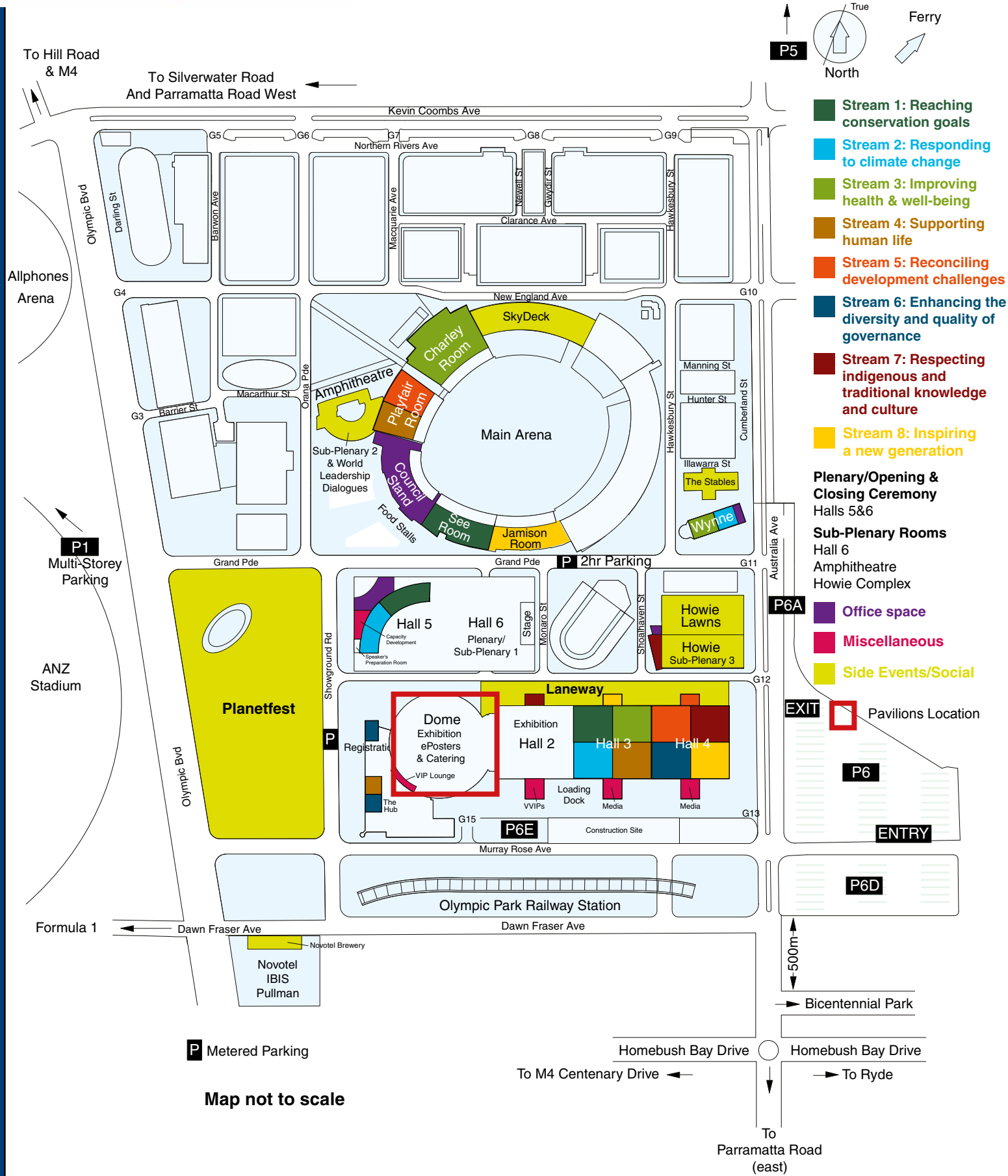
Ocean climax to Planetfest!

PlanetFest is taking place on the middle Sunday during the Congress – 16th November from 10:30 to 20:30. It is an interactive, inspiring and fun filled event designed to engage and promote the conservation of parks and worldwide protected areas to the community. The climax of the day will be the showing of the MacGillivray Freeman film Journey to the South Pacific narrated by Cate Blanchett. The film documents an underwater voyage to Indonesia to learn about its inhabitants such as giant rays and whale sharks as well as efforts being made in the region for ocean conservation. The film will follow a fun packed entertaining day including a live concert performance.



IUCN
WORLD PARKS
CONGRESS
SYDNEY 2014

Venue Map



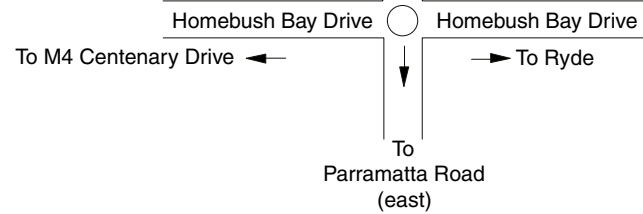
- Stream 1: Reaching conservation goals
- Stream 2: Responding to climate change
- Stream 3: Improving health & well-being
- Stream 4: Supporting human life
- Stream 5: Reconciling development challenges
- Stream 6: Enhancing the diversity and quality of governance
- Stream 7: Respecting indigenous and traditional knowledge and culture
- Stream 8: Inspiring a new generation

- Plenary/Opening & Closing Ceremony**
Halls 5&6
- Sub-Plenary Rooms**
Hall 6
Amphitheatre
Howie Complex

- Office space
- Miscellaneous
- Side Events/Social
- Pavilions Location

P Metered Parking

Map not to scale



WEDNESDAY 12 NOVEMBER

08.30 - 10.00	10.30 - 12.00	12.00 - 13.30	13.30 - 15.00	15.30 - 17.00	17.30 - 18.30	19.00 - 22.00
	11.00 - 12.00 ARRIVAL OF THE VAKA VOYAGING KANOE				18.00 - 18.10 SYLVIA EARLE RECOGNIZED ALONGSIDE OTHER PATRONS AND CHAMPIONS OF THE WPC	
					HALL 5 & 6	

THURSDAY 13 NOVEMBER

09.30 - 10.00	10.30 - 11.00	12.15 - 13.15	13.30 - 14.00	15.30 - 16.00	17.30 - 19.00	19.00 - 21.00
ALTOGETHER, CONNECTING WITH FRENCH MPAS DIVERSITY AAMP OCEAN+ PAVILION	BLUE SOLUTIONS – INSPIRATION FROM WHAT HAS WORKED IN MPAS BLUE SOLUTION INITIATIVE OCEAN+ PAVILION	WHAT'S HAPPENING IN THE GREAT BARRIER REEF? WCPA - MARINE AMPHITHEATRE	REACTIVE REEFS EXHIBITION NASA OCEAN+ PAVILION	QUADCOPTERS, STROMATOLITES AND SEA SNAKES, HABITAT CHARACTERIZATION IN A WORLD HERITAGE MARINE PARK OCEAN+ PAVILION	17.30 - 19.00 ACHIEVING BIODIVERSITY-POSITIVE GAS PRODUCTION: LESSONS LEARNED IN RECONCILING INDUSTRIAL DEVELOPMENT IN AN ECOLOGICALLY-SENSITIVE AREA HALL 4 Pod NTH	19.00 - 21.00 LAST EXITS TO AICHI, TOWARDS IMPAC 4 AND 2020 AAMP - IUCN
	10.30 - 11.00 OCEAN DATA VIEW DEMO UNEP - WCMC PROTECTED PLANET PAVILION	12.15 - 13.15 PRESENTATION OF A BOOK ON MPAS AND FISHERIES : IMPACTS AND GOVERNANCE USED IN FISHERIES BY SERGE GARCIA IUCN - CEM- FEG	14.30 - 15.00 AUSTRALIA'S MARINE ENVIRONMENT – EXPLORING THE SOUTH-EAST COMMONWEALTH MARINE RESERVES NETWORK PARKS AUSTRALIA OCEAN+ PAVILION	16.30 - 17.00 "THE PROPHECY", COMBINING ART AND ECOLOGY FOR A CHANGE OF BEHAVIOR TOWARDS NATURE/ ECOFUND OCEAN+ PAVILION	17.30 - 19.00 MARINE PROTECTED AREAS AND SMALL-SCALE FISHERIES PLAYFAIR ROOM 1	OCEAN+ PAVILION
	11.30 - 12.00 PRESENTATION OF BOOK ON "GOVERNANCE OF MARINE FISHERIES AND BIODIVERSITY CONSERVATION: INTERACTIONS AND CO-EVOLUTION" FEG - WWF - EBCD OCEAN + PAVILION	MPAs AND FISHERIES: BRIDGING THE DIVIDE WWF OCEAN+ PAVILION	14.45 - 15.45 SYLVIA EARLE - INVITED PANELIST TO THE SESSION: PARKS, PEOPLE, PLANET: INSPIRING SOLUTIONS AMPHITHEATRE	17.00 - 19.00 JOINT PRESS CONFERENCE WITH PACIFIC LEADERS, PRESIDENTS AND MINISTERS WIN & PACIFIC COMMUNITY DIALOGUE PAVILION	17.30 - 19.00 CELEBRATING ACHIEVEMENTS IN THE CORAL TRIANGLE CTI-FF HOWIE COMPLEX	



MAIN MARINE STREAMS

 PAVILION EVENTS	 LUNGTIME DEBATES	 GOOGLE HANGOUTS	 PLENARY AND SUB-PLENARY	 SOCIAL EVENTS	 STREAM EVENTS AND SIDE EVENTS	 CAPACITY DEVELOPMENT AND WORKSHOPS
---	--	---	---	---	---	--

FRIDAY 14 NOVEMBER

<p>07.00 - 08.15 OCEANS WIN & PACIFIC COMMUNITY DIALOGUE PAVILION </p> <p>08.30 - 10.00 PACIFICO NATURE BASED SOLUTIONS PAVILION </p>	<p>10.30 - 11.00 BLUE SOLUTIONS — INSPIRATION FROM WHAT HAS WORKED IN MPAS BLUE SOLUTION INITIATIVE</p> <p>OCEAN+ PAVILION</p>	<p>12.00 - 13.30</p> <p>VAKAS: OUR PACIFIC VOYAGE, OUR OCEAN, OUR LIFE IUCN</p> <p>HALL 4B1</p>	<p>13.30 - 14.00 EYE ON THE REEF: BE A MARINE BIOLOGIST FOR A DAY! (LIVE LINK-UP TO THE REEF) GRBMPA</p> <p>OCEAN+ PAVILION</p>	<p>15.30 - 16.00 WORLD HERITAGE OPPORTUNITIES FOR MARINE BIODIVERSITY CONSERVATION IUCN - ROWA</p> <p>OCEAN+ PAVILION</p>	<p>17.30 - 18.30 COOK ISLAND MPA: CREATING THE LARGEST PROTECTED AREA EVER GMPP - ORO</p> <p>OCEAN+ PAVILION</p>	<p>19.00 - 21.00 UNESCO MARINE WORLD HERITAGE: A DECADE OF CONSERVATION SUCCESS</p> <p>OCEAN+ PAVILION</p>
<p>07.00 - 08.00 BUY A FISH, SAVE A TREE</p> <p>CHARLEY ROOM</p>	<p>11.00 - 12.00 ALL STREAMS LEAD TO THE OCEAN: THE MARINE JOURNEY AT THE IUCN WORLD PARKS CONGRESS 2014 GBRMPA - NOAA</p> <p>SOUTHEE NORTH</p>	<p>CORAL TRIANGLE MARINE PROTECTED AREA SYSTEM DEVELOPMENT AND CAPACITY NEEDS TNC CAPACITY DEVELOPMENT ROOM</p>	<p>14.30 - 15.00 INSPIRING SOLUTIONS FROM MARINE REGIONS: STEPPING UP THE DIALOGUE BETWEEN MARINE REGIONS TO ACHIEVE AICHI TARGET 11 FASTER</p>	<p>16.00 - 16.30 OCEAN DATA VIEW DEMO UNEP-WCMC</p> <p>PROTECTED PLANET PAVILION</p>	<p>18.00 - 19.30 AN EXPLORATION AND EXPLANATION OF THE USE OF THE IUCN PROTECTED AREA DEFINITION, MANAGEMENT CATEGORIES AND GOVERNANCE TYPES: THE COMMON LANGUAGE OF THE IUCN WORLD PARKS CONGRESS AND MARINE AND TERRESTRIAL PROTECTED AREA WORK WORLDWIDE.</p> <p>HALL 3A1</p>	
<p>08.30 - 09.00 PUTTING IMPORTANT MARINE MAMMAL AREAS (IMMAS) ON THE GLOBAL MAP IMMA-MPA</p> <p>OCEAN+ PAVILION</p>	<p>11.30 - 12.00 TRADITIONAL CONSERVATION MANAGEMENT IN TUVALU SPREP - UNEP</p> <p>OCEAN+ PAVILION</p>	<p>SPAIN-UNEP PARTNERSHIP FOR PROTECTED AREAS IN SUPPORT OF LIFEWEB</p> <p>PROTECTED PLANET PAVILION</p>	<p>HELCOM - SPREP - THE BARCELONA CONVENTION - PARKS & WILDLIFE FINLAND</p> <p>OCEAN+ PAVILION</p>	<p>MPAS AND SUSTAINABLE LIVELIHOODS</p> <p>PLAYFAIR ROOM 1</p>		
<p>08.30 - 10.30 OPENING SUB-PLenary PLANET — STREAMS 2, 4 AND MARINE</p> <p>AMPHITHEATRE</p>		<p>12.15 - 13.15 AUSTRALIA'S NATIONAL RESERVE SYSTEM: A WORLD LEADING EXAMPLE OF ESTABLISHING A COMPREHENSIVE, ADEQUATE AND REPRESENTATIVE RESERVE SYSTEM ON LAND AND SEA, BUT WHERE TO FROM HERE? HALL 3A1</p>		<p>LOCALLY MANAGED MARINE AREAS PROVIDING ECOLOGICAL, SOCIAL AND ECONOMIC BENEFITS AT MULTIPLE SCALES</p> <p>AMPHITHEATRE</p>		
<p>09.30 - 10.25 LIVE SYDNEY SEAHORSE HUNT WITH THE CATLIN SEAVIEW SURVEY</p> <p>GOOGLE HANGOUT</p>		<p>12.15 - 13.15 WHAT'S NEW IN GOOGLE OCEAN: OUR LATEST UNDERWATER STREET VIEW COLLECTS FROM AROUND THE WORLD AND A FIRST LOOK AT GLOBAL HIGH SEAS FISHING / GOOGLE</p> <p>OCEAN+ PAVILION</p>		<p>16.30 - 17.00 AUSTRALIA'S COMMONWEALTH MARINE RESERVES REVIEW — COME MEET THE CHAIRS AND HEAR ABOUT THEIR WORK - PARKS AUSTRALIA</p> <p>OCEAN+ PAVILION</p>		
<p>09.30 - 10.00 CONNECTING MAMMALS: MARINE MAMMAL MPAS, A QUESTION OF NETWORK AND SCALE AAMP</p> <p>OCEAN+ PAVILION</p>		<p>COSTS AND BENEFITS OF EXPLORING AND PROTECTING SOME PLACES ON THE PLANET - NATGeo</p> <p>HORDERN ROOM</p> <p>SEE ROOM</p>				

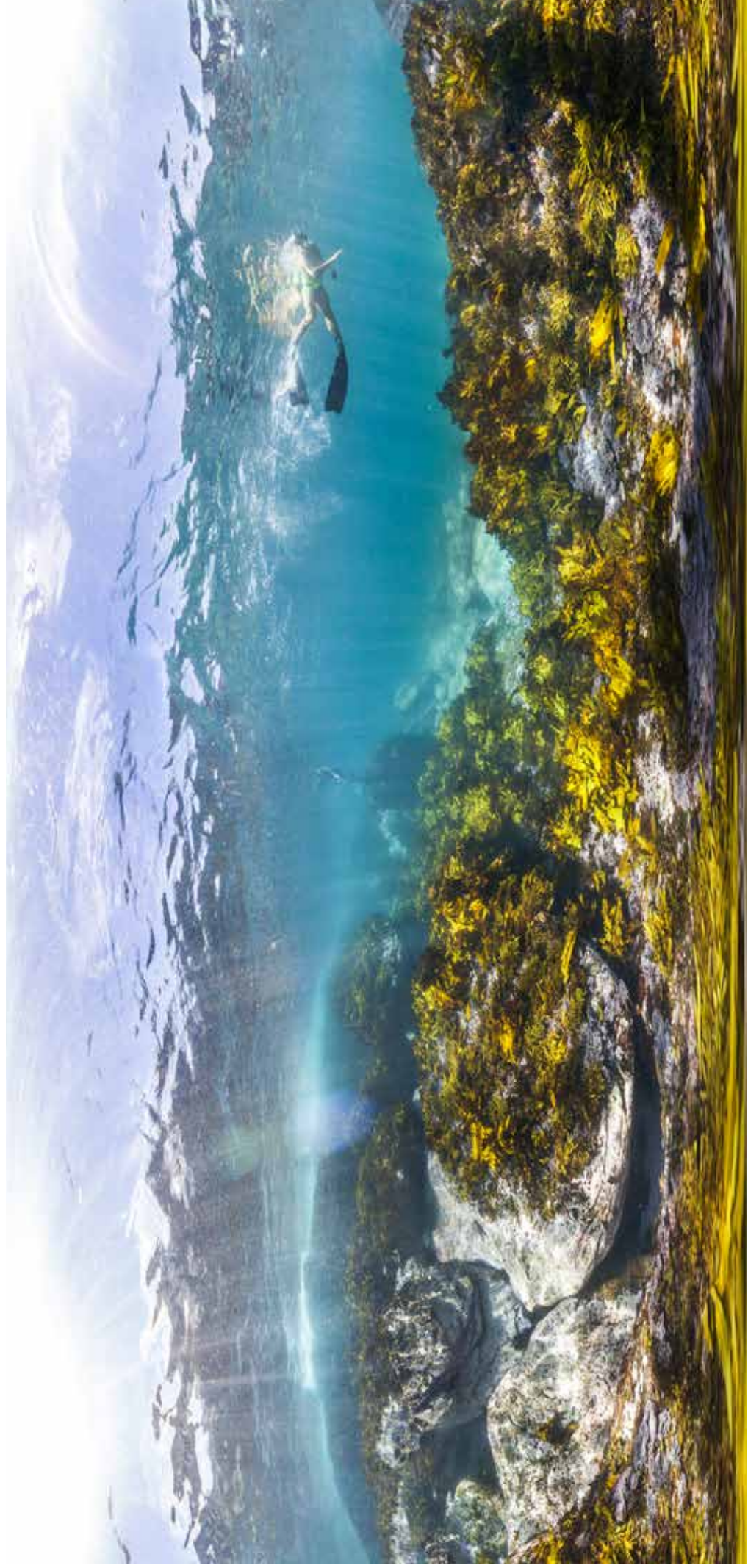
SATURDAY 15 NOVEMBER

07.00 - 10.00	08.30 - 09.00 The ICRI Continuing Call to Action ICRI	OCEAN+ PAVILION	19.00 - 22.00	17.30 - 18.30	15.30 - 17.00	13.30 - 15.00	12.00 - 13.30	10.30 - 12.00	07.00 - 10.00
08.30 - 09.00	08.30 - 10.00 SETTING THE SCENE PACIFIC MESSAGE	OCEAN+ PAVILION	19.00 - 21.00 PACIFIC: CHALLENGE FOR A GIANT /PACIFIC AGENCY AMP AAMP - SPREP - NOAA	18.00 - 22.00 MARINE PROTECTED AREAS AND COMMUNITY LIVELIHOOD: SHARING EXPERIENCES ON PARTICIPATORY MANAGEMENT CONAMP HALL 3 B2	15.30 - 16.00 ENGAGING THE PUBLIC THROUGH VOYAGES OF DISCOVERY OF OUR MARITIME HERITAGE NOAA	13.30 - 14.00 INTRODUCING THE GLOBAL OCEAN REFUGE SYSTEM MCI	CAPACITY DEVELOPMENT FOR MPAs – A PLANNING GUIDE SERIES CI - MMAF - NOAA	09.30 - 10.00 OCEAN DATA VIEWER DEMO PACIFIC POLYNESIAN PROMISE	08.30 - 10.00 WIN & PACIFIC COMMUNITY DIALOGUE PAVILION
07.00 - 08.15	08.30 - 10.00 WIN & PACIFIC COMMUNITY DIALOGUE PAVILION	OCEAN+ PAVILION	19.30 - 20.00 CONSERVATION FOR CORALS OR TURTLES? NATURE BASED SOLUTIONS PAVILION		BUILDING RESILIENCE AND ADAPTATION IN MARINE ECOSYSTEMS – CASE STUDIES GBRMIPA - NPS SOUTHEE SOUTH	BRAVE NEW WORLD: INNOVATIVE APPROACHES FOR ADAPTING AND TRANSFORMING MPAs IN A CHANGING CLIMATE GBRMIPA - CSIRO - NPS SOUTHEE SOUTH	12.15 - 13.15 LESSONS LEARNED FROM AUSTRALIA'S MPA EXPERIENCE WCPA - MARINE AMPHITHEATRE	10.30 - 11.15 CHAMPIONING THE HIGH SEAS HIGH SEAS ALLIANCE - IUCN GOOGLE+ HANGOUT	08.30 - 10.00 PACIFIC COMMUNITY DIALOGUE PAVILION
08.30 - 10.00	08.30 - 10.00 NETWORKS & ECOLOGICALLY AND BIOLOGICALLY IMPORTANT AREAS MEDPAN - NOAA	HOWIE COMPLEX			FINANCING PROTECTED AREAS THROUGH PAYMENTS FOR ENVIRONMENTAL SERVICES (PES): A POSSIBILITY? FAO HALL 3B2	14.30 - 15.00 Big OCEAN CHALLENGES: FIRST GOVERNANCE; THEN OBJECTIVES AAMP - NOAA	12.15 - 13.15 MEDITERRANEAN MARINE PROTECTED AREAS: ROADMAP TO ACHIEVE THE Aichi TARGETS MED PAN OCEAN+ PAVILION	10.30 - 11.00 BLUE SOLUTIONS – INSPIRATION FROM WHAT HAS WORKED IN MPAs BLUE SOLUTION INITIATIVE OCEAN+ PAVILION	08.30 - 10.00 VALUING AND ACCOUNTING - THE IMPORTANCE OF PROTECTED AREAS FOR THE COMMUNITY CHARLEY ROOM
08.30 - 10.00	08.30 - 10.00 NATURE - THE FUTURE IS COOL IUCN - WCPA	STREAM 8 HOMEROOM	19.30 - 22.45 SPECIAL VIEWING OF MISSION BLUE FILM IN SYDNEY BOOKINGS ESSENTIAL AT WWW.MISSIONBLUEFILM.EVENTBRITTE.COM.AU THE UNIVERSITY OF TECHNOLOGY SYDNEY			14.30 - 15.00 SCREENING OF TWO SHORT FILMS: PROJECT OCEAN AND NET-WORKS	12.15 - 13.15 SEA STATES: HOW MUCH OF OUR SEAS ARE GOVERNMENTS REALLY PROTECTING? PLAYFAIR ROOM 2	10.30 - 11.00 POLAR JOURNEY: THE EFFECTIVENESS OF PROTECTED AREAS IN THE HIGH NORTH AND DEEP SOUTH: PART 2 IUCN - WWF - NOAA SOUTHEE SOUTH	08.30 - 10.00 NATURE - THE FUTURE IS COOL IUCN - WCPA
08.30 - 10.00	08.30 - 10.00 JOURNEY: THE EFFECTIVENESS OF PROTECTED AREAS IN THE HIGH NORTH AND DEEP SOUTH: PART 1 / IUCN - WWF - NOAA	SOUTHEE SOUTH			MIGRATORY INDIGENOUS PEOPLES, LIVELIHOODS AND MARINE PROTECTED AREAS HOWIE PAVILION FOYER	GOVERNANCE OF THE HIGH SEAS (PART 2) IUCN DOME THEATRETTE	12.15 - 13.15 SEA STATES: HOW MUCH OF OUR SEAS ARE GOVERNMENTS REALLY PROTECTING? PLAYFAIR ROOM 2	10.30 - 11.00 INDIGENOUS SUSTAINABLE USES AND RIGHTS IN MPAs GBRMIPA ?AMPHITHEATRE OR HOWIE PAVILION FOYER	08.30 - 10.00 JOURNEY: THE EFFECTIVENESS OF PROTECTED AREAS IN THE HIGH NORTH AND DEEP SOUTH: PART 1 / IUCN - WWF - NOAA
09.30 - 10.00	09.30 - 10.00 INTRUSION DANCE / SCIENCE PRESENTATION OCEAN+ PAVILION	OCEAN+ PAVILION			GOVERNANCE OF THE HIGH SEAS (PART 2) IUCN DOME THEATRETTE	GOVERNANCE OF THE HIGH SEAS (PART 1) IUCN DOME THEATRETTE	12.15 - 13.15 SEA STATES: HOW MUCH OF OUR SEAS ARE GOVERNMENTS REALLY PROTECTING? PLAYFAIR ROOM 2	11.30 - 12.00 INNOVATION IN SURVEILLANCE AND MEASURING MANAGEMENT EFFECTIVENESS IN AUSTRALIA'S COMMONWEALTH MARINE RESERVES PARKS AUSTRALIA OCEAN+ PAVILION	09.30 - 10.00 OCEAN DATA VIEWER DEMO PROTECTED PLANET PAVILION
					16.30 - 17.00 SOI ACTION PLAN. IMPLEMENTING THE SUSTAINABLE OCEAN INITIATIVE OF THE SECRETARIAT OF THE CONVENTION ON BIOLOGICAL DIVERSITY / SOI OCEAN+ PAVILION	TRADITIONAL MARINE MANAGEMENT SYSTEMS AND INTERNATIONAL POLICIES AND TARGETS HALL 4B1			




SUNDAY 16 NOVEMBER

08.30 - 10.00	10.30 - 12.00	12.00 - 13.30	13.30 - 15.00	15.30 - 17.00	17.30 - 18.30	19.00 - 22.00
<p>09.00 - 12.00 A STRUCTURED APPROACH TO PROTECTED AREA COMPLIANCE MANAGEMENT GBRMPA</p> <p>JAMISON ROOM</p>		<p>PLANETFEST</p>				<p>18:30 SCREENING OF "JOURNEY TO THE SOUTH PACIFIC"</p> <p>CATHY FREEMAN PARK</p>



MONDAY 17 NOVEMBER

08.30 - 10.00	08.30 - 09.00 THE CORAL SEA COMMONWEALTH MARINE RESERVE PARKS AUSTRALIA OCEAN+ PAVILION	10.30 - 11.00 BLUE SOLUTIONS – INSPIRATION FROM WHAT HAS WORKED IN MPAS BLUE SOLUTION INITIATIVE OCEAN+ PAVILION	12.00- 13.30	13.30 - 15.00	15.30 - 17.00	17.00 - 18.30	19.00 - 22.00
08.30 - 10.30 MARKET-BASED MECHANISMS TO ENSURE CONSERVATION OF MARINE AND COASTAL SYSTEMS AND SERVICES NATURE BASED SOLUTIONS PAVILION	10.30 - 11.15 ACHIEVING BIODIVERSITY-POSITIVE GAS PRODUCTION BUSINESS AND BIODIVERSITY PAVILION	11.30 - 12.00 WORLD HARBOUR PROJECT OCEAN+ PAVILION	ENHANCING LARGE-SCALE MARINE MANAGEMENT THROUGH INDIGENOUS PARTICIPATION, KNOWLEDGE AND PRACTICE CAPACITY DEVELOPMENT ROOM	13.30 - 14.00 MARINE WILDERNESS 10+10 PROJECT – BRINGING BACK THE WILD AROUND THE WORLD THE WILD FOUNDATION OCEAN+ PAVILION	15.30 - 16.00 "HONU BY THE SEA" PERFORMANCE NOAA OCEAN+ PAVILION	17.30 - 19.00 FOSTERING SUSTAINABLE COASTAL FISHERIES SOUTHEE SOUTH	19.00 - 21.00 PRCM: 10 ANS AU SERVICE DE LA PROMOTION DES AMP PRCM OCEAN+ PAVILION
09.30 - 10.00 WORKING TOGETHER – MAKING FRIENDS IN MULTIPLE USE MPAS PARKS AUSTRALIA OCEAN+ PAVILION	10.30 - 11.15 LOCALLY-MANAGED MARINE AREAS: BUILDING BLOCKS FOR RESILIENT AND EMPOWERED COASTAL COMMUNITIES GOOGLE HANGOUT	12.15 - 13.15 SUSTAINING THE HIGH SEAS: PATHS TO PROGRESS HIGH SEAS - HIGH SEAS ALLIANCE OCEAN+ PAVILION	THE SOCIAL AND ECONOMIC LONG TERM MONITORING PROGRAM FOR THE GREAT BARRIER REEF HORDERN ROOM	14.00-14:30 OCEAN DATA VIEWER DEMO PROTECTED PLANET PAVILION	15.00 - 17.00 FISH FOR THE FUTURE WIN & PACIFIC COMMUNITY DIALOGUE PAVILION	17.00 - 17.50 'GOING BIG' WITH MARINE PROTECTION: LEVERAGING THE UNIQUE BENEFITS OF LARGE-SCALE MPAS TO ENHANCE OCEAN MANAGEMENT AND GOVERNANCE GLOBALLY GOOGLE HANGOUT	19.15 MARINE RECEPTION (INVITATION ONLY - INQUIRE AT OCEAN+ PAVILION) SYDNEY MARITIME MUSEUM
THE ARTIC DIALOGUE HALL 2 NTH POD	10.30 - 11.15 NATIONAL EXPERIENCES WITH MPA NETWORK DEVELOPMENT PARKS AUSTRALIA SEE ROOM	12.15 - 13.15 LAND/SEA CONNECTIONS: BUILDING A COALITION FOR PROTECTION FROM RIDGES TO REEFS WCPCA - MARINE AMPHITHEATRE	12.15 - 13.15 VALUES IN MARINE PARK MANAGEMENT HORDERN ROOM	14.30 - 15.00 SURVEILLANCE AND CONTROL IN THE GALAPAGOS MARINE RESERVE: COMBINING TECHNOLOGY, TECHNIQUES AND LEGAL ACTION. OCEAN+ PAVILION	16.30 - 17.00 NEW TECHNOLOGY AND MPA MANAGEMENT: BEYOND THE GADGET AAMP OCEAN+ PAVILION		
EFFECTIVE AND EQUITABLE GOVERNANCE OF THE SEASCAPE (PART 1) DOME THEATRETTE	10.30 - 11.15 EFFECTIVE AND EQUITABLE GOVERNANCE OF THE SEASCAPE (PART 2) DOME THEATRETTE	12.15 - 13.15 GUIDELINES FOR SUSTAINABILITY AND ECOSYSTEM BASED CLIMATE CHANGE ADAPTATION IN THE COASTAL ZONE HALL 3A2	MPAS AS A TOOL FOR FOOD SECURITY FAO - IUCN - CEM HALL 3B2	WHAT'S THE CATCH: COMMON OCEANS AND MARINE PROTECTED AREAS WORLD BANK HALL 4 NTH POD	CLOSING THE LOOP - MOVING MANAGEMENT EFFECTIVENESS EVALUATIONS FROM REPORTING TO ADAPTIVE MANAGEMENT HORDERN ROOM		
OCEANIA DIALOGUE HALL 4B1	10.30 - 11.15 BIODIVERSITY OUTCOMES 2: MEASURING SUCCESS AND FAILURE OF PROTECTED AREAS HALL 3A1	12.15 - 13.15 YOUNG PEOPLES' PACT 1 HALL 3 NTH POD	YOUNG PEOPLES' PACT 2 HALL 3 NTH POD				

TUESDAY 18 NOVEMBER

08.30 - 10.00	09.30 - 10.00	10.30 - 12.00	12.00 - 13.30	13.30 - 15.00	15.30 - 17.00	17.30 - 18.30	19.00 - 22.00
08.30 - 09.00 LONG-LINING, DRIFTNETS AND SHARK NETS: DESTRUCTIVE PRACTICES THAT INDISCRIMINATELY KILL SIGNIFICANT AMOUNTS OF BY-CATCH OCEAN+ PAVILION	09.30 - 10.00 GLOBAL FISHING WATCH. THE FIRST GLOBAL VIEW OF HIGH SEAS FISHING THROUGH BIG DATA ANALYSIS BY GOOGLE, OCEANA, & SKYTRUTH. OCEAN+ PAVILION	10.30 - 11.00 BLUE SOLUTIONS -- INSPIRATION FROM WHAT HAS WORKED IN MPAS BLUE SOLUTION INITIATIVE OCEAN+ PAVILION	MEDITERRANEAN LANDSCAPE: FINANCING APPROACHES FOR MARINE CONSERVATION CONSERVATION FINANCE PAVILION	13.30 - 14.00 YOUTH ARE MOVING FORWARD: ARE YOU KEEPING UP? OCEAN+ PAVILION	15.30 - 16.00 RIDGES TO REEF CONSERVATION PLANNING IN THE SOLOMON ISLANDS OCEAN+ PAVILION	REGIONAL MARINE PROTECTED AREA NETWORKS MARIE ROMANI MEDPAN HALL 4 NTH POD	19.00 - 21.00 A FOCUS ON ISLANDS GLISPA – BEST OCEAN+ PAVILION
09.30 - 10.00 GLOBAL FISHING WATCH. THE FIRST GLOBAL VIEW OF HIGH SEAS FISHING THROUGH BIG DATA ANALYSIS BY GOOGLE, OCEANA, & SKYTRUTH. OCEAN+ PAVILION	11.30 - 12.00 CAPACITY BUILDING: MARITIME TERRITORIES IN ACTION FOR MARINE BIODIVERSITY AAMP OCEAN+ PAVILION	12.15 - 13.15 LOCATION, LOCATION, LOCATION: ARE WE PUTTING MPAS IN THE RIGHT PLACES? WCPA - MARINE AMPHITHEATRE	13.30 - 15.00 OCEANIA MEMBERS: REALIZING PARTNERSHIPS WIN & PACIFIC COMMUNITY DIALOGUE PAVILION	14.30 - 15.00 CONTRIBUTING TO THE DESIGNATION OF MPA: TWO CAMPAIGNS OF THE GLOBAL OCEAN LEGACY PROGRAM, IN FRENCH POLYNESIA AND NEW CALEDONIA OCEAN+ PAVILION	15.45 - 16.05 MARINE – KEY OUTCOMES AND RECOMMENDATIONS AMPHITHEATRE	INTERNATIONAL COURT OF JUSTICE MOCK CASE ON CORAL REEF CONSERVATION UNIVERSITY OF SYDNEY - IUCN DOME THEATRETTE	20.40 - 21.30 THE GREAT BARRIER REEF: WHAT WORKS! CELEBRATING 10 YEARS OF REZONING GOOGLE+ HANGOUT
MARINE PROTECTED AREAS: THEIR POTENTIAL AND THEIR LIMITS IN ADDRESSING CLIMATE CHANGE CONSERVATION INTERNATIONAL - UNIVERSITY COLLEGE LONDON SOUTHEE SOUTH	STRATEGIC ENVIRONMENTAL ASSESSMENTS: CONCEPTS, METHODS AND LESSONS LEARNED AND APPLICATION FOR MARINE PROTECTED AREAS / GBRMPA - ICRI CAPACITY DEVELOPMENT ROOM	12.15 - 13.15 THE STATUS AND PROBLEMS OF JAPANESE OCEANS – FROM ICEBERG TO CORAL REEFS- NACS-J OCEAN+ PAVILION	14.30 - 15.00 CONTRIBUTING TO THE DESIGNATION OF MPA: TWO CAMPAIGNS OF THE GLOBAL OCEAN LEGACY PROGRAM, IN FRENCH POLYNESIA AND NEW CALEDONIA OCEAN+ PAVILION	17.30 - 19.00 OCEAN CONSERVATION AT SCALE: LINKING LOCAL TO REGIONAL INITIATIVES ACROSS THE INDO-PACIFIC CI PLAYFAIR ROOM 1	17.30 - 20.30 MARINE WORLD HERITAGE IN ARAB STATES ARC-WH - IUCN CLYDESDALE	MARINE PROTECTED AREAS AS SOLUTIONS FOR RESILIENCE IUCN GPAP / BLUE SOLUTIONS INITIATIVE HALL 3B2	
MARINE PROTECTED AREAS AS SOLUTIONS FOR RESILIENCE IUCN GPAP / BLUE SOLUTIONS INITIATIVE HALL 3B2	SCENARIOS FOR ECOLOGICAL REPRESENTATIVENESS AND ADEQUACY OF PROTECTED AREAS UNDER GLOBAL CHANGE SEE ROOM!	INSPIRING SOLUTIONS: BETTER GOVERNED SEASCAPES AS MODELS FOR SUSTAINABLE LIVING LIMMA - MEDPAN HALL 42B	12.15 - 13.15 MAURITIUS-SEYCHELLES: MAKING CONSERVATION WORK FOR DEVELOPMENT PLAYFAIR ROOM 2				



MAIN MARINE STREAMS

PAVILION EVENTS
 LUNCHTIME DEBATES
 GOOGLE HANGOUTS
 PLENARY AND SUB-PLENARY
 SOCIAL EVENTS
 STREAM EVENTS OR OTHER MARINE EVENTS? SIDE EVENTS?
 CAPACITY DEVELOPMENT AND WORKSHOPS

WEDNESDAY 19 NOVEMBER

<p>08.30 - 09.00 ELEVATING CULTURAL RESOURCES IN OUR PROTECTED AREAS - INTERNATIONAL YEAR OF MARITIME HERITAGE AND TOOLKIT ON MARINE CULTURAL RESOURCES MANAGEMENT NOAA</p> <p>OCEAN+ PAVILION</p>	<p>10.30 - 11.00 BLUE SOLUTIONS – INSPIRATION FROM WHAT HAS WORKED IN MPAs/BLUE SOLUTION INITIATIVE OCEAN+ PAVILION</p> <p>11.00 - 11.30 OCEAN DATA VIEWER DEMO</p> <p>PROTECTED PLANET PAVILION</p>	<p>12.00 - 13.30</p> <p>12.15 - 13.15 LE PLAN GABON BLEU : 20% DE LA ZEE GABONAIS SOUS RÉGIME DE PROTECTION GABON BLEU OCEAN+ PAVILION</p>
<p>09.30 - 10.00 FROM PROMISE TO ACTIONS : THE IMPAN AGENDA AAMP</p> <p>OCEAN+ PAVILION</p>	<p>11.30 - 12.00 A PARTNERSHIP FOR THE MOZAMBIQUE CHANNEL IUCN - GMPP- WWF MOZAMBIQUE AFD OCEAN+ PAVILION</p>	

Marine Theme Leaders

Anne Caillaud
Project Manager – International, Great Barrier Reef Operations
Great Barrier Reef Marine Park Authority
anne.caillaud@gbrmpa.gov.au

Ashley Ings
Branch Business Manager, Great Barrier Reef Operations
Great Barrier Reef Marine Park Authority
ashley.ings@gbrmpa.gov.au

Belinda Jago
Director, Commonwealth Marine Reserves Review
Parks Australia
Belinda.Jago@environment.gov.au

Andrew Skeat
General Manager, Great Barrier Reef Operations
Great Barrier Reef Marine Park Authority
andrew.skeat@gbrmpa.gov.au

Elizabeth Moore
Chief for International Programs, Office of National Marine Sanctuaries,
NOAA
Elizabeth.Moore@noaa.gov

Lauren Wenzel
Acting Director, National Marine Protected Areas Center
NOAA
Lauren.Wenzel@noaa.gov

Chiara Zuccarino-Crowe
Knauss Fellow, Office of National Marine Sanctuaries
NOAA
Chiara.Zuccarino-crowe@noaa.gov

Jon Day
James Cook University
jon.day@my.jcu.edu.au

The IUCN Global Marine and Polar Staff in Sydney

The IUCN Global Marine and Polar Programme comprises 41 team members and 3 ocean ambassadors working in 14 countries on eleven broad themes: Climate Change Mitigation & Adaptation, Coastal Livelihoods, Coral Reefs, Conserving Threatened Species, Energy & Industry, Fisheries & Aquaculture, Managing Marine Invasive Species, Marine Protected Areas (MPAs), Europe Overseas Programme, Ocean Governance, and Polar Conservation.



Carl Gustaf Lundin
Director
IUCN Headquarters, Gland, Switzerland
carl.lundin@iucn.org



Dan Laffoley
Principal Advisor, Marine Science & Conservation
Peterborough, England
danlaffoley@btinternet.com



François Simard
Deputy Director and Senior Advisor for Fisheries
IUCN Headquarters, Gland, Switzerland
francois.simard@iucn.org



Francis Vorhies
Senior Advisor, Economics
Switzerland
fvorhies@earthmind.net



James Oliver
Programme Operations Officer
IUCN Headquarters, Gland, Switzerland
james.oliver@iucn.org



Kristina Gjerde
Senior High Seas Policy Advisor
Cambridge, MA, USA
kristina.gjerde@eip.com.pl



Elisabeth Kjellqvist
Administrative Assistant and Ocean+ Pavilion Manager
IUCN Headquarters, Gland, Switzerland
elisabeth.kjellqvist@iucn.org



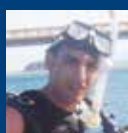
Aurélie Spadone
Marine Programme Officer,
University of Massachusetts, Boston, USA
aurelie.spadone@iucn.org



Rifaee Rasheed
Social Sciences and Outreach Officer
Male, Maldives
rifaee.rasheed@gmail.com



Lauren Kroll
Temporary Marine Officer and Ocean+ Pavilion Manager
IUCN Headquarters, Gland, Switzerland
lauren.kroll@iucn.org



Ameer Abdulla
Senior Advisor, Marine Biodiversity and Conservation Science
Malaga, Spain
ameer.abdulla@iucn.org



Kathy Zischka
Marine research consultant
Greenpeace International
IUCN Marine and Polar Programme Volunteer
k_zischka@hotmail.com



Carole Martinez
Programme Coordinator, Regional Seas & EU Overseas
IUCN Headquarters, Gland, Switzerland
carole.martinez@iucn.org

Photo Credits

Cover page: Dave Thomas, Ecodivers
Page 3: Starfish: John Turnbull, Marine explorer
Page 4: Seahorse: Richard Vevers, Catlin Seaview Survey
Page 5: Anemone: Carl Gustaf Lundin, IUCN
Page 6: Sydney Harbour, Catlin Seaview Survey
Page 7: Clown Fish: Carl Gustaf Lundin, IUCN
Page 8: Aldabra's Malabar: Carl Gustaf Lundin, IUCN