



IUCN
WORLD PARKS CONGRESS
SYDNEY 2014

Development of Marine Conservation and Marine Protected Areas in Myanmar

Nyunt Win
Deputy Director
Department of Fisheries
MYANMAR



Department of Fisheries

The Myanmar Marine Fisheries Law (25th April, 1990)



The Director General of the Fisheries Department may, for the purpose of carrying out the fishery systematically, and for the conservation and protection of the fish, issue conditions, prohibitions, orders, and directives relating to fishery.

1. Intro

**2. Fishery
Management**

3. Conservation

4. Cooperation

Ministry of Livestock , Fisheries and Rural Development (MOLFRD)

Policy

- To undertake food security & food safety in livestock and fishery sector and to implement sustainable development of rural area

Implementing plans

- Coordination and cooperation with Development partners to get technology know how and Assistance for upgrading research and conservation in fishery sector
- Upgrading and expanding of laboratories for fish inspection and quality control
- **To implement Sustainable ecosystem approach fisheries and conservation of fisheries resources and environment**
- Upgrading the Fishery Institute and training centers
- Exercising Public Private Partnership for capital ,technical and market development
- To implement Joint venture business by inviting local and foreign investment
- Sustainable human resources development
- Development of Data collection and Statistical analysis

Closed seasons and Closed areas

35% Fishing closed season
1st April – 31st May 2014



Spawning Season
Jun- July-August (Started from 1993-94)



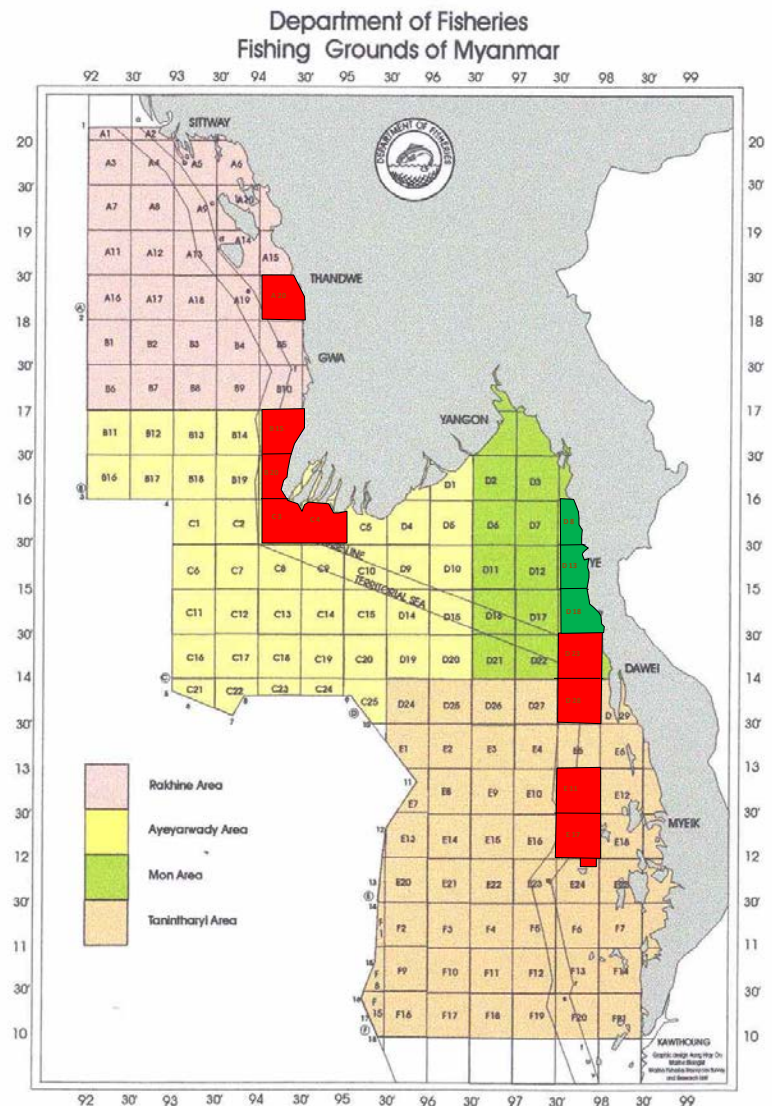
Lobster and Commercial Fishes Spawning Season
Jun- July-August (Started from 2008-09)



Hard Clam (9/2008) Myeik, Palaw, Kyae chaung and Ta Bo chaung point. 20 Acre
Jan-Feb-Mar



Shark (2/2004) Myeik Archipelago

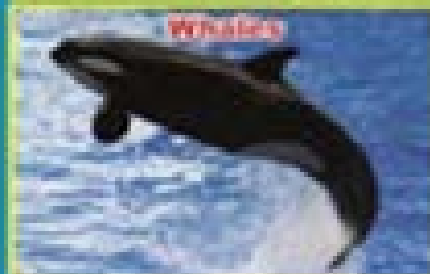
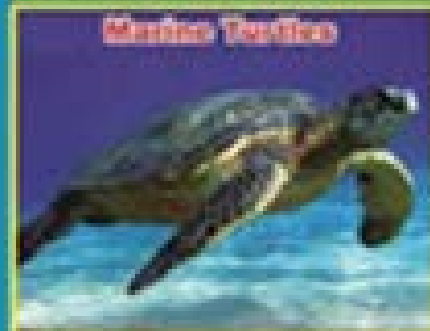
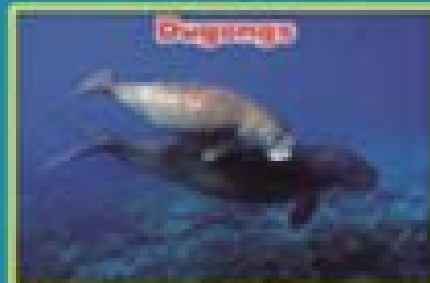


Conservation

Myanmar is a member of:

- Association of Southeast Asian Nations (ASEAN).
- Network of Aquaculture Centers in Asia and the Pacific (NACA).
- Southeast Asian Fisheries Development Center (SEAFDEC).
- Myanmar is a party to the Convention on Biological Diversity (CBD).
- Myanmar is a party to the Convention on International Trade in Endangered Species of Wild Fauna and Flora (CITES)
- **WCS** : fields of Marine and Riverine MOU with Wildlife Conservation Society for Cooperation in the fields of Marine and Riverine Biodiversity Conservation in Myanmar (from 2007 – 2017)
- **IOSEA** : Signatory State of Memorandum of Conservation and Management on Marine Turtle and their Habitats in Indian Ocean and Southeast Asian Countries (IOSEA-MoU) in 2001 .

Conservation Activities – Marine species conservation



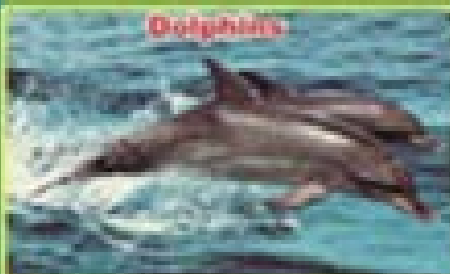
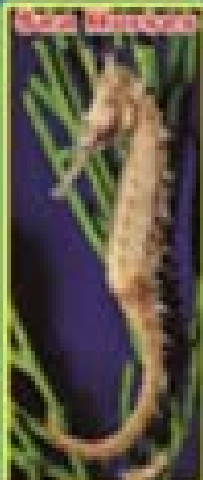
Protected Aquatic Animals in Myanmar



Let's Save and Conserve Our Creatures

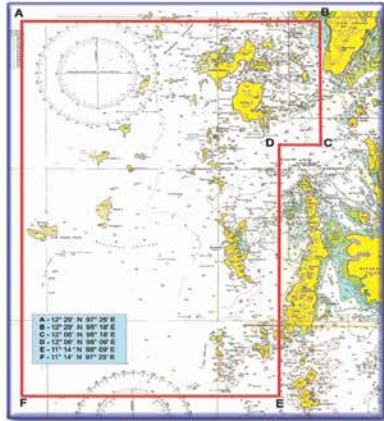
- 1. Protect searching, collecting, trading and storing these aquatic animals and their products.
- 2. Using explosive substances, poisons, chemicals and such other dangerous substances are strictly prohibited.

Department of Fisheries
Ministry of Livestock and Fisheries

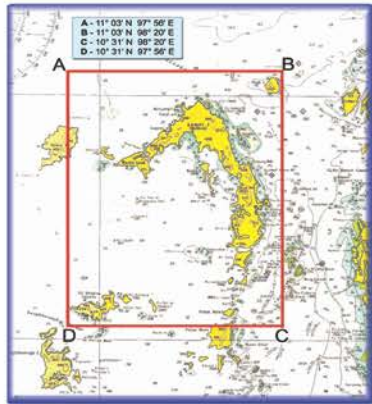


Conservation Awareness Programs

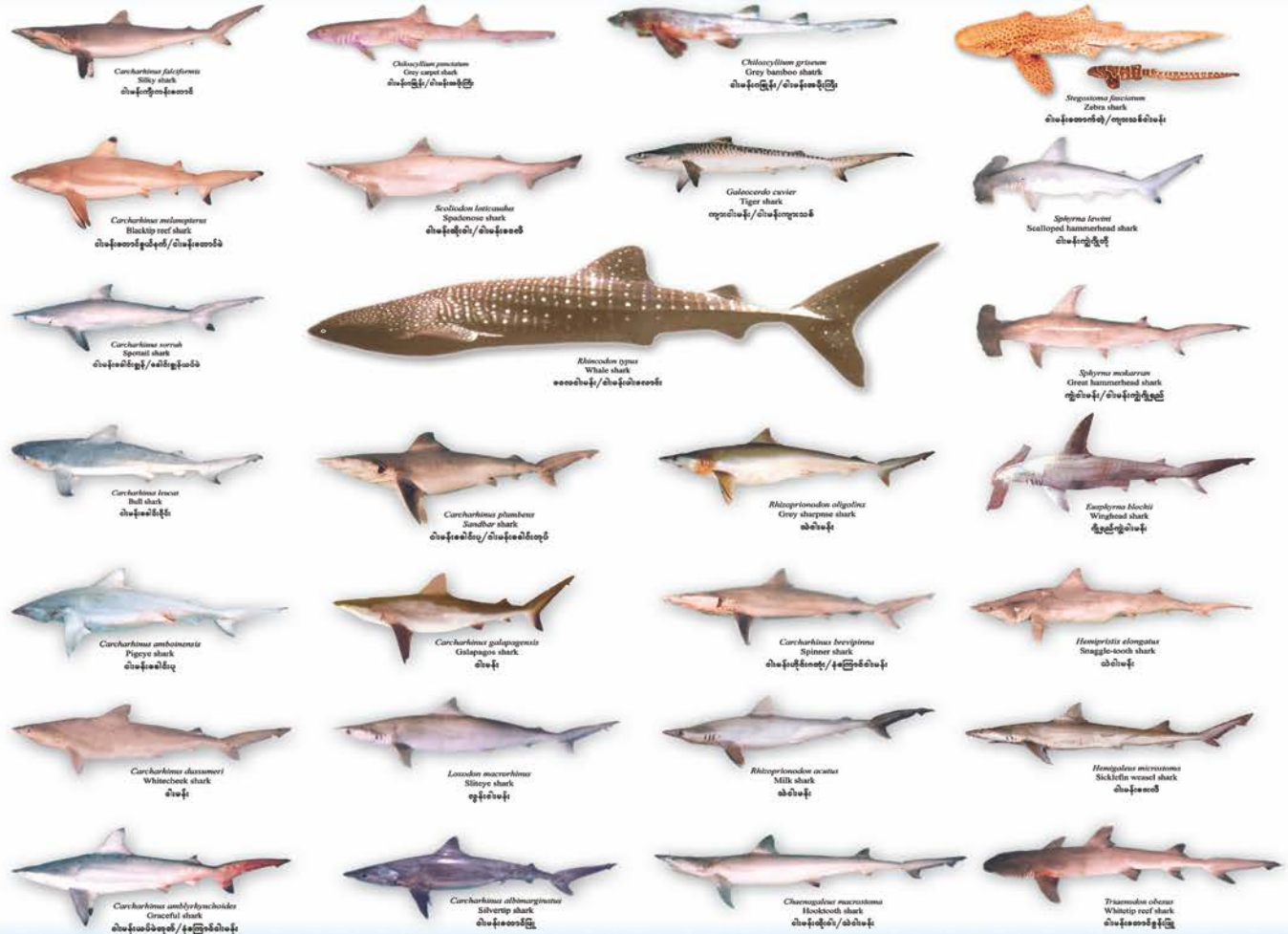
မြန်မာ့ပင်လယ်ပြင်တွင် ရေတွင်ရှိသည့် ငါးမနိုးမျိုးစုံစာရင်း SHARKS FOUND IN MYANMAR WATERS



Shark Fishing Protected Area I

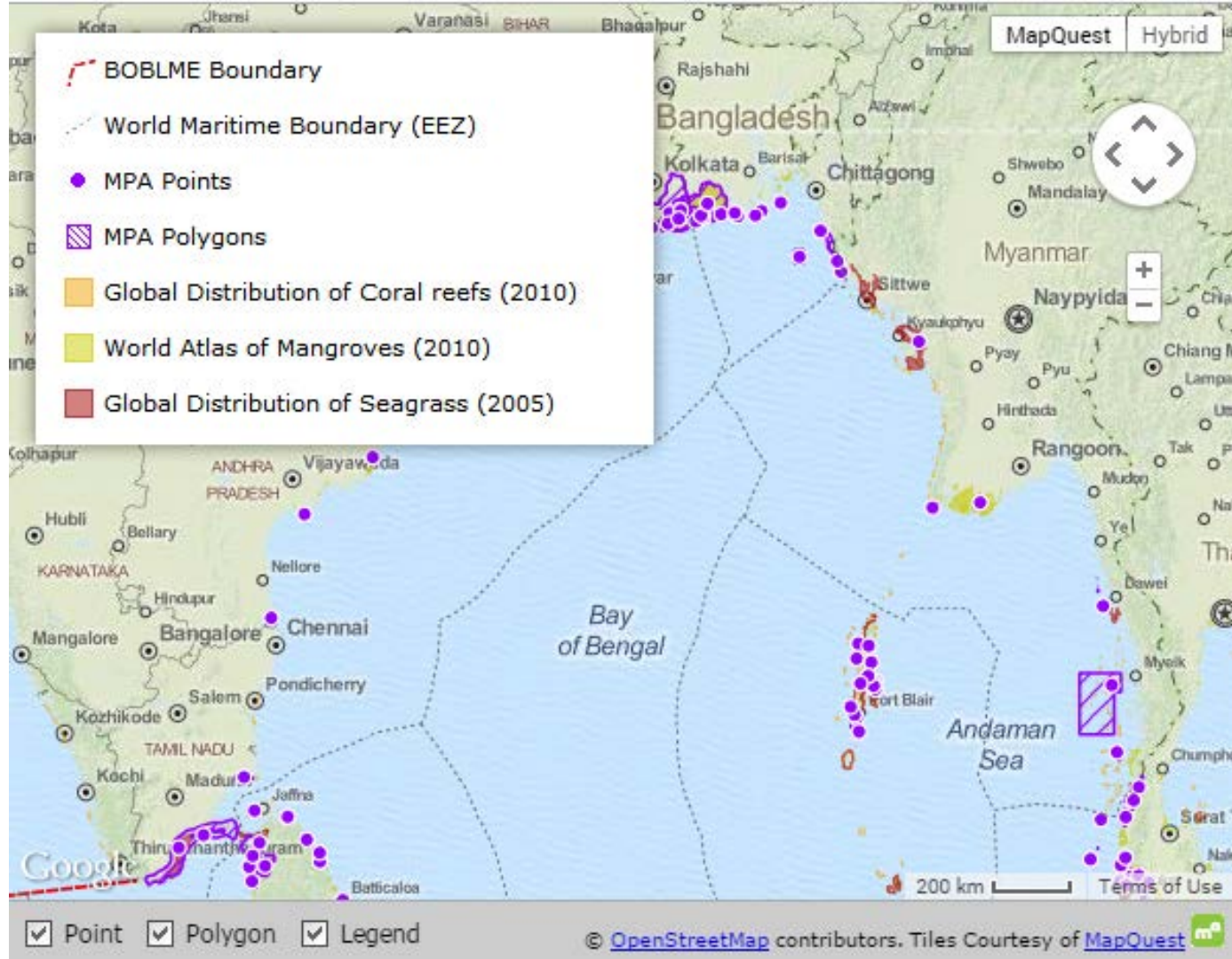


Shark Fishing Protected Area II



မွေးမြူရေးနှင့်ရေလုပ်ငန်းဝန်ကြီးဌာန၊ ဝါးလုပ်ငန်းဦးစီးဌာန။

MPAs



#	MPA ID	Country	Site Name	National Designation
	MMR0001	Myanmar	Lampi Island	Marine National Park
	MMR0003	Myanmar	Meinmahla Kyun	Wildlife Sanctuary
	MMR0004	Myanmar	Moscov Island	Wildlife Sanctuary
	MMR0006	Myanmar	Ross Island	Shark Protected Area
	MMR0005	Myanmar	Thamihla Kyun GS (Diamond Island)	Wildlife Sanctuary
	MMR0002	Myanmar	Wunbaik	Reserved Forest

Indian Threadfin Conservation



Wet Phyu Taung Island



Thar Myar Mei Island

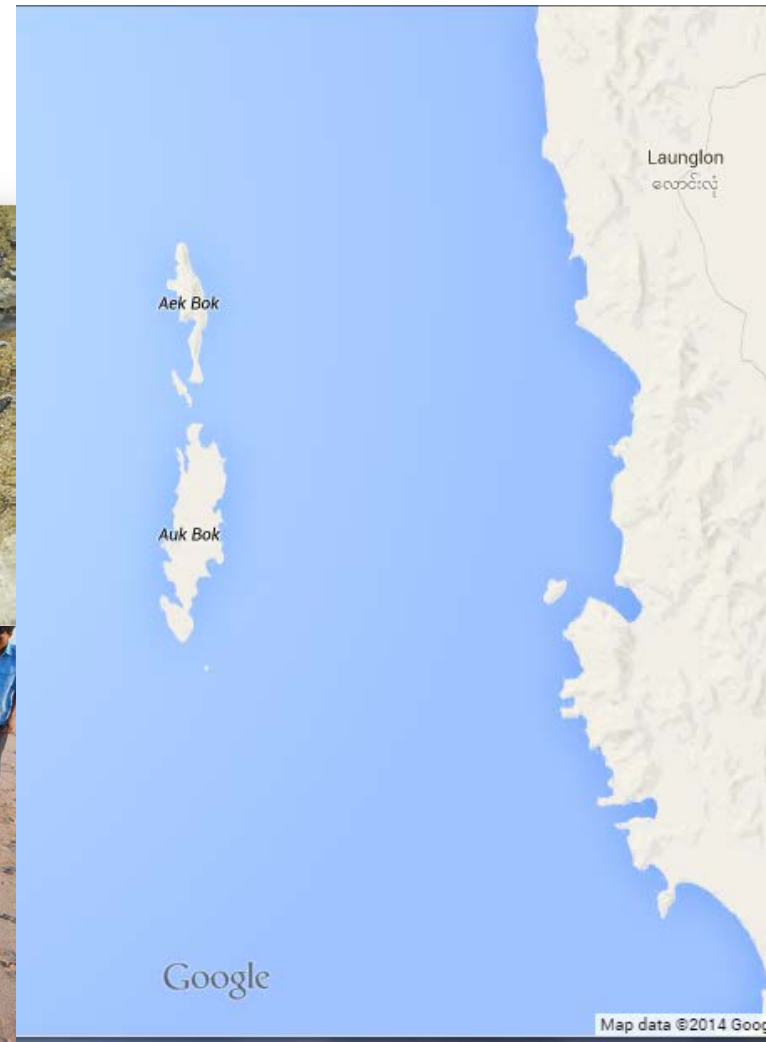


Protected Period - Jun, July, August

Marine turtle Conservation

Hatching and releasing program

Long Lone Township, Long Lone Boke Island

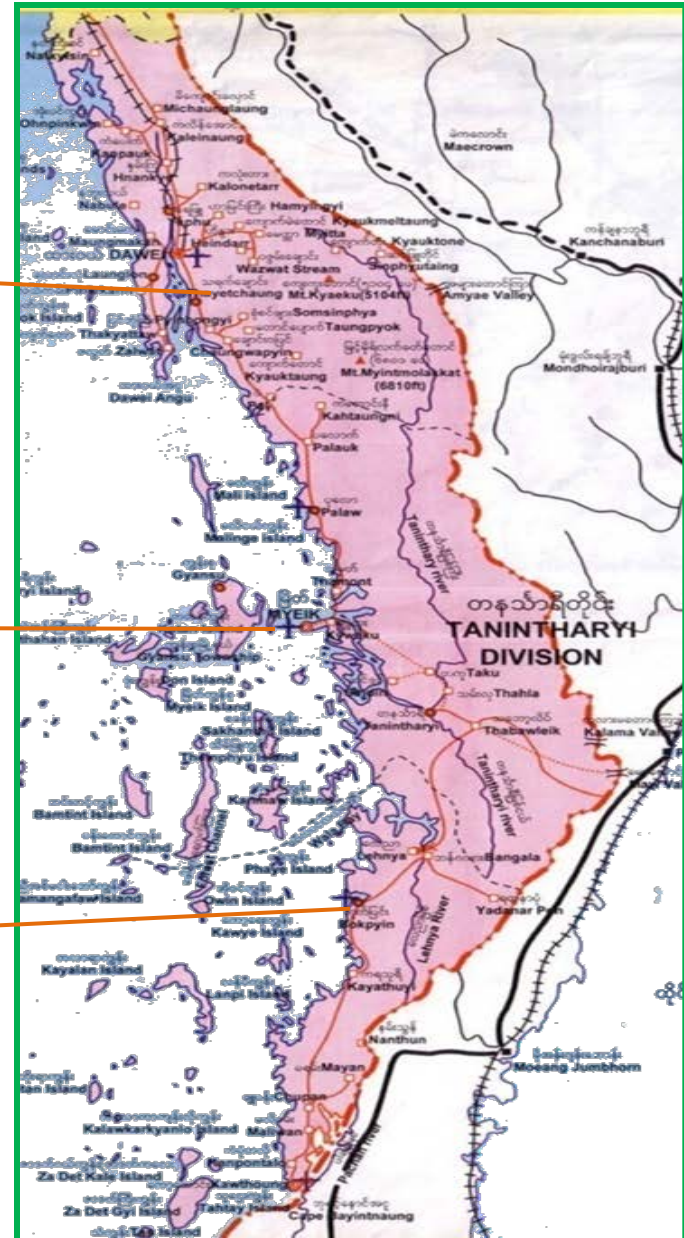


Mud crab conservation

Thayetchaung Township - 115 acres

Kyunsu Township - 350 acres

Bokepyin Township - 100 acres



Mangrove forest rehabilitation & replantation & stock enhancement



Cooperation with regional & International organizations

- **Bay of Bengal Large Marine Ecosystem Program (BOBLME) Project (2010 -2014)** : Myanmar is one of the participating countries together with Maldives, India, Sri Lanka, Bangladesh, Thailand, Indonesia and Malaysia. to enhanced food security and reduced poverty for coastal communities in the BOB region, consistent and linked with a sustained resource base of good ecosystem quality.
- **Ayeyarwaddy Dolphin Research and Protected Area Management Plan**, supported by WCS along the Ayeyarwady River in Mandalay and Saging Regions is to protect and conserve the Ayeyarwady Dolphin.
- Letter of Agreement with **FFI** regarding collaborative program to support the conservation of marine and freshwater biodiversity in Myanmar.
- **SEAFDEC-SWEDEN Project**
- **MOECAF , MOHT**

Marine Ecosystem Survey of Myanmar

by R/V Dr Fridtj of Nansen (13 Nov – 17 Dec 2013)

Palegic fish

1979-80: 1,000,000 mt (10cm mean Length, appl)

2013 : 110,000 mt (10cm mean Length, appl)



Demersal fish

1979-80 acoustic estimate : 750,000 mt (mean Length. 20 cm)

2013 Trawl estimate : 280,000 mt



Sustainable Fishery

Issues and Obstacles

- *Over-exploitation of fishery resources (IUU Fishing)*
- *Deterioration of habitats & environment*
- *responsible and sustainable utilization of resources*
- *Emerging trade-related requirements*
- *Emerging Issues – Climate Change, Increasing population,*

Implementation

- *management for sustainable fisheries*
- *Use of relevant and timely information for planning and management of fisheries*
- *Sustainable aquaculture development*
- *Sustainable utilization and trade of fish and fishery products*
- *Regional cooperation for fisheries development*

Thank you
Che-zu-tin-ba-deh

