

MPA development in Myanmar



- Lack of capacity and lack of scientific data to make informed decisions for fisheries management and marine conservation
- Very limited marine protected area network
- Initial stakeholder consultation and identification of threats and priority sites for coral reef surveys
- Historic opportunity for conservation with the new reform government supporting the expansion of protected areas and collaborative protected area management

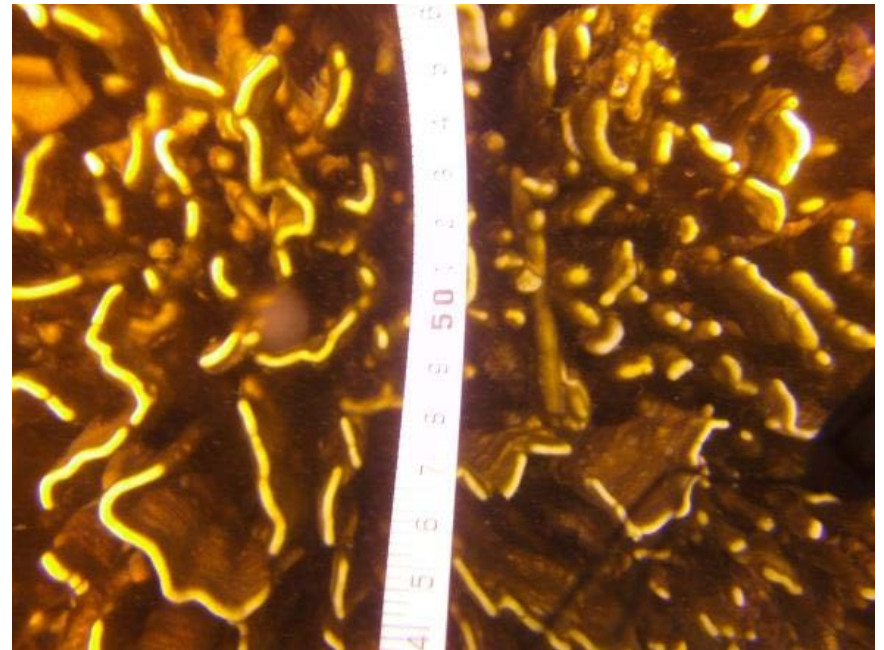
Dive training

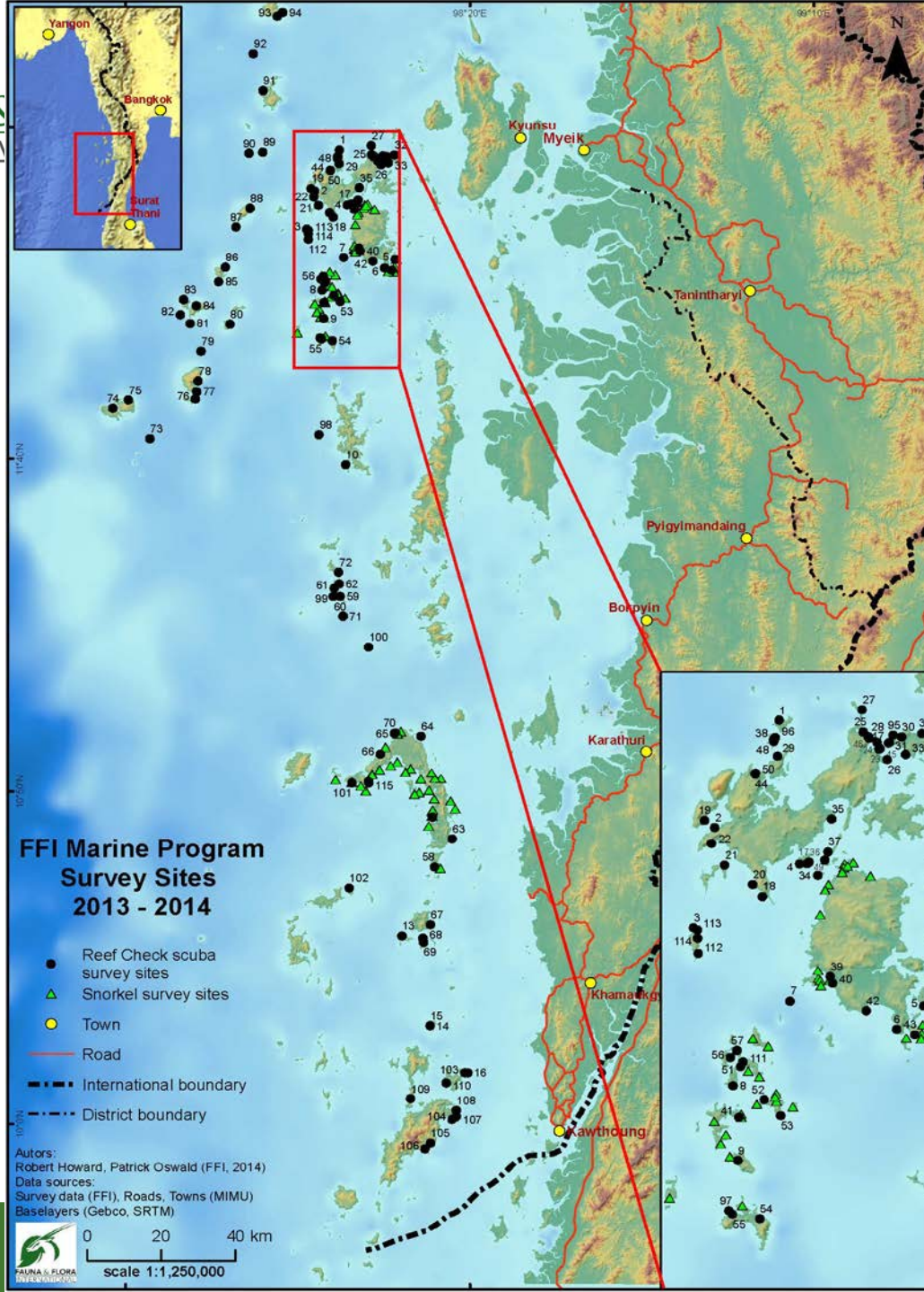
- MOECAAF, DoF, FFI, University and Naval staff trained to Advanced Open Water Certification and reef check surveys, coral taxonomy
- FFI staff trained to Rescue Diver Certification (now)



Coral Reef Surveys

- 54 sites surveyed in 2014 using reef check methodology by Marine Team.
- 180 sites for baseline monitoring now established.
- More surveys planned for November and June!



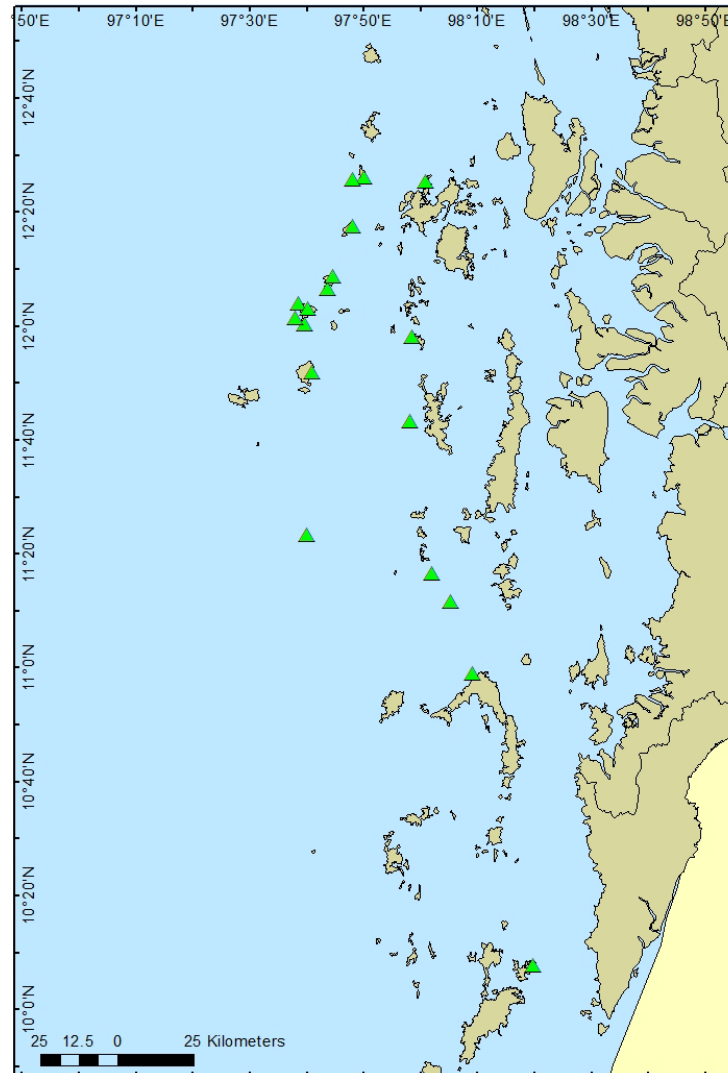


Reef Resilience

- High levels of hard coral diversity
- 287 coral species
- 68 genera and 17 families
- Predict a total of 309 species
- Endangered Species: 2
- Vulnerable Species: 36
- Overall resilience/health of reefs:
average to below average levels

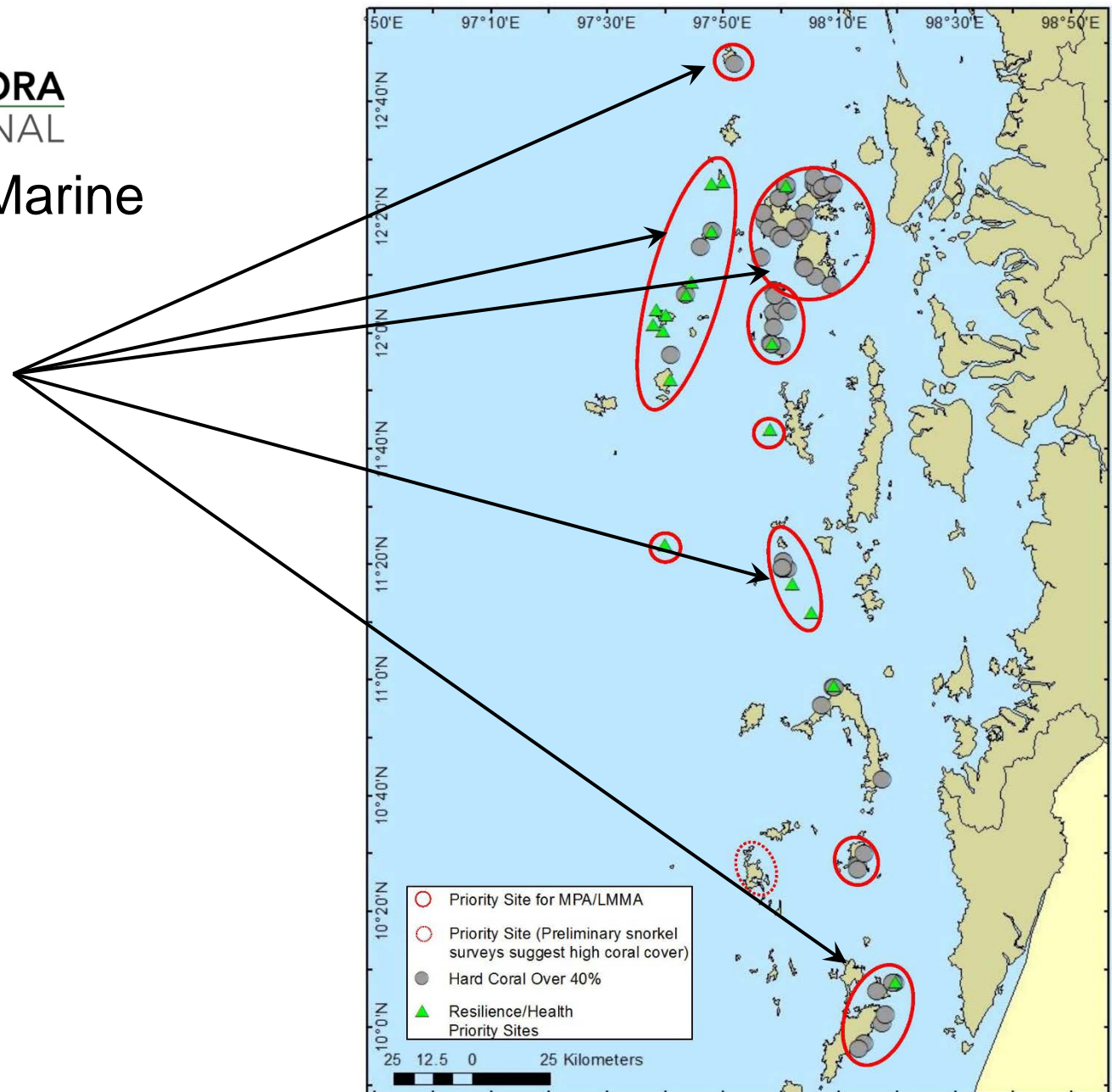


Reef Resilience



Priority Sites for Marine Conservation

Coral reefs



National Workshop on Marine Protected Areas

Key Output:

Piloting and establishing MPAs and
LMMAs in key sites



MPA/LMMA



Next Steps

- Develop an enabling environment to establish MPAs/LMMAs
- Create taskforce to establish MPAs/LMMAs
- Implement pilot MPA/LMMA establishment
- Develop a science –based network of MPAs

Thank you very much

