

THE CEPF EASTERN AFROMONTANE HOTSPOT AND THE MACARTHUR FOUNDATION GREAT LAKES REGION STRATEGIES

Overlaps, Synergies and Joint Implementation

Julius Arinaitwe
Regional Director for Africa
BirdLife International



CRITICAL ECOSYSTEM PARTNERSHIP FUND **MacArthur Foundation**



GEOGRAPHIC OVERLAP

EASTERN AFROMONTANE HOTSPOT

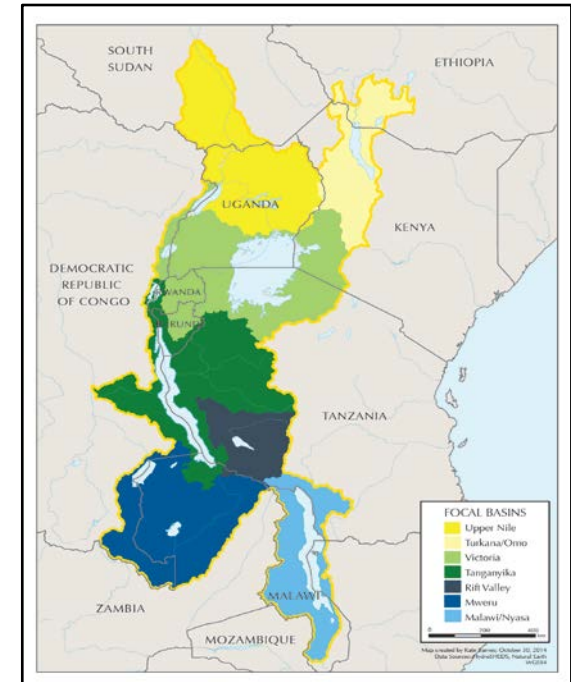


17 Countries

Altitudinal Range: ~1,200m – 5,985m asl

Excludes Lake Victoria and Lake Turkana

GREAT LAKES REGION



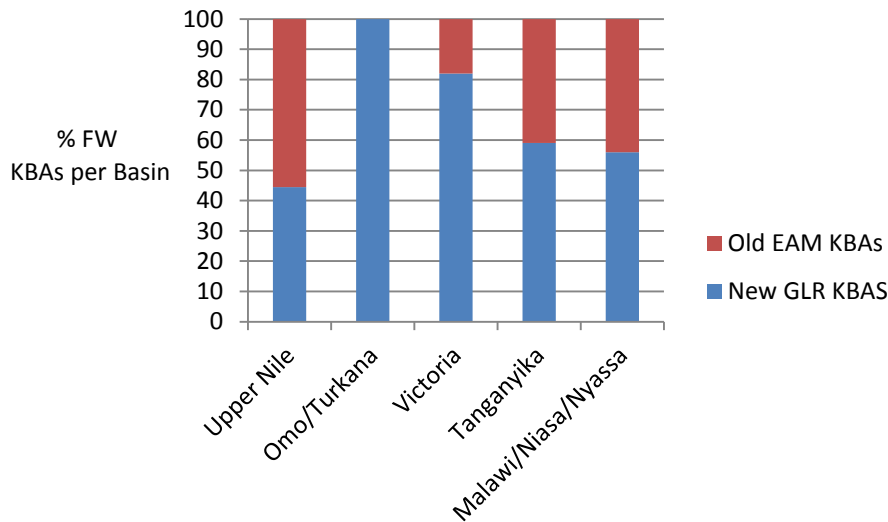
11 Countries

Altitudinal Range: 700m bsl – 5,705m asl

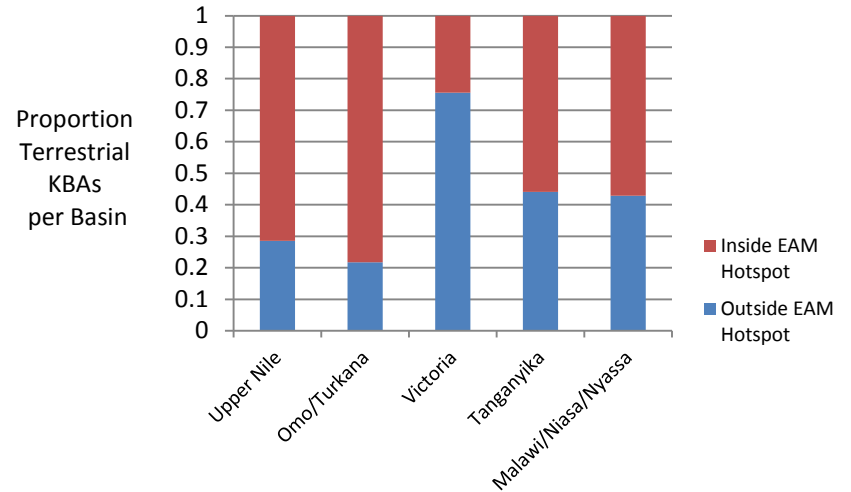
Excludes Saudi Arabia, Yemen, Eritrea, Sudan, Somalia and Zimbabwe,

KBA OVERLAP

Freshwater KBAs per Basin



Terrestrial GLR KBAs per Basin



The GLR includes more Freshwater KBAs than the EAM
 Terrestrial GLR KBAs include sites at lower altitudes (<1200 m asl)

All Omo/Turkana and most Lake Victoria Basin FW KBAs are exclusive to the GLR.

Most of the GLR terrestrial KBAs in the Lake Victoria Basin are exclusive to the GLR



COMMONALITIES

Both Strategies used a common methodology

- Were participatory, led by the BirdLife Africa Partnership Secretariat
- Identified KBAs as site foci for conservation action
- Prioritised clusters of KBAs either as Biodiversity Corridors or Altitudinal Gradients / Water Catchments
- Followed the same framework (Chapters)
- Identified broad Strategic Directions and specific Investment/Action Priorities



DIFFERENCES

The EAM Strategy

- Funds Civil Society organisations (including the Private Sector)
- Is focussed more on terrestrial habitats above 1200m asl, and threatened biodiversity
- Identifies 47 priority sites for investment (more prescriptive)
- Emphasizes capacity building for small CSOs
- Covers a 5 year investment period
- Avoids investing in well funded sites

The GLR Strategy

- Also open to Government agencies
- Focusses more on Freshwater and Lowland Habitats, Ecosystem Services, and Climate Change Resilience.
- Identifies 60 priority sites for investment (less prescriptive)
- Is aimed more at organisations with existing capacity
- Covers a 10 year investment period
- Allows investment in well funded sites

SYNERGIES

- **Sharing information**
 - Calls for proposals, e.g. Lake Kivu, avoiding duplication
 - partner capacities and track record of delivery
 - project results and research findings
 - Cross-fertilisation of ideas, e.g. on corridors and CRAGs
- **Sharing in action**
 - Complementary projects in shared KBAs
 - Complementary basin level work along altitudinal gradient
- **Raising awareness and mobilising support**
 - Potential to inform understanding of biodiversity/ecosystem service linkages
 - Influence policies and institutions on use of natural resources
 - Joint side events at international meetings



THANKS!



CRITICAL ECOSYSTEM
PARTNERSHIP FUND

MacArthur Foundation



Partnership for nature and people