



IUCN
WORLD PARKS
CONGRESS
SYDNEY 2014

*Parks, people, planet:
inspiring solutions*

The Contribution of Brazilian Protected Areas for National Economy

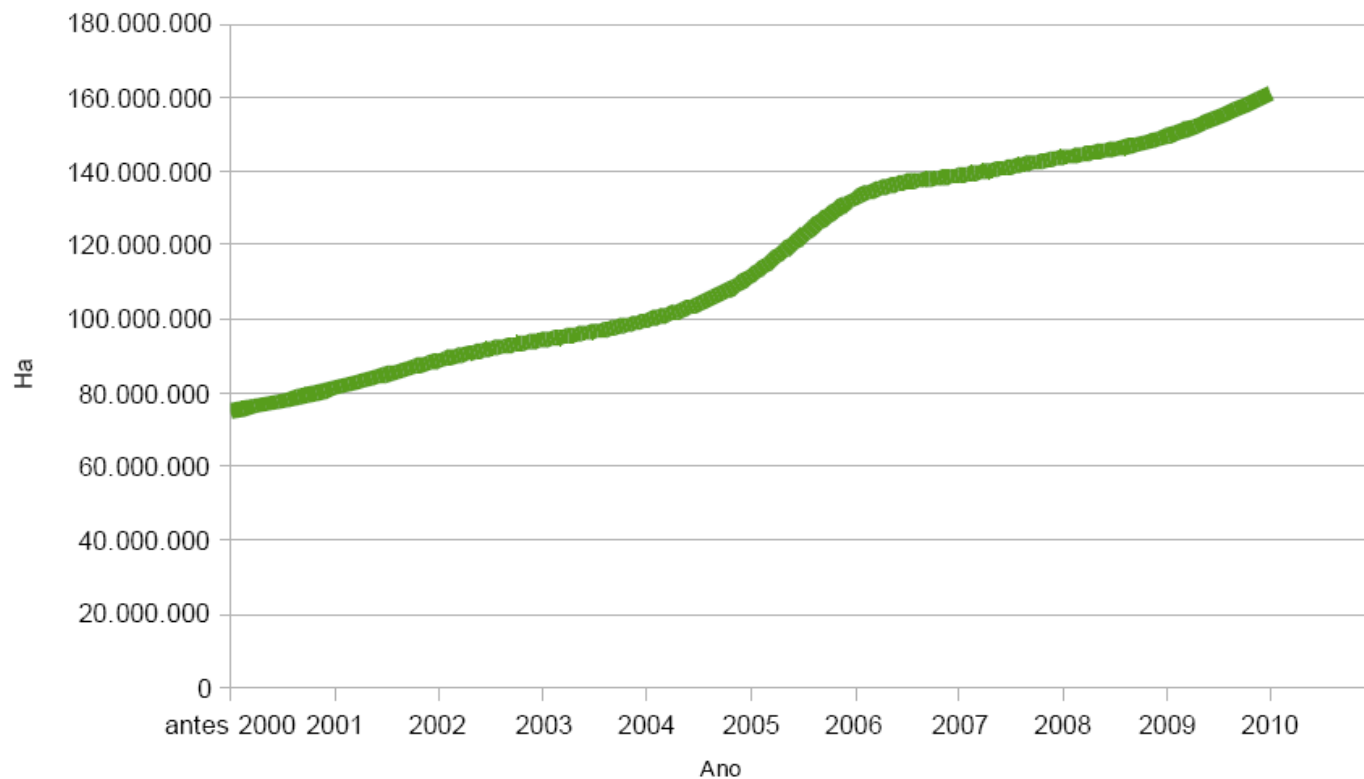
CONSERVATION
INTERNATIONAL

Brazil



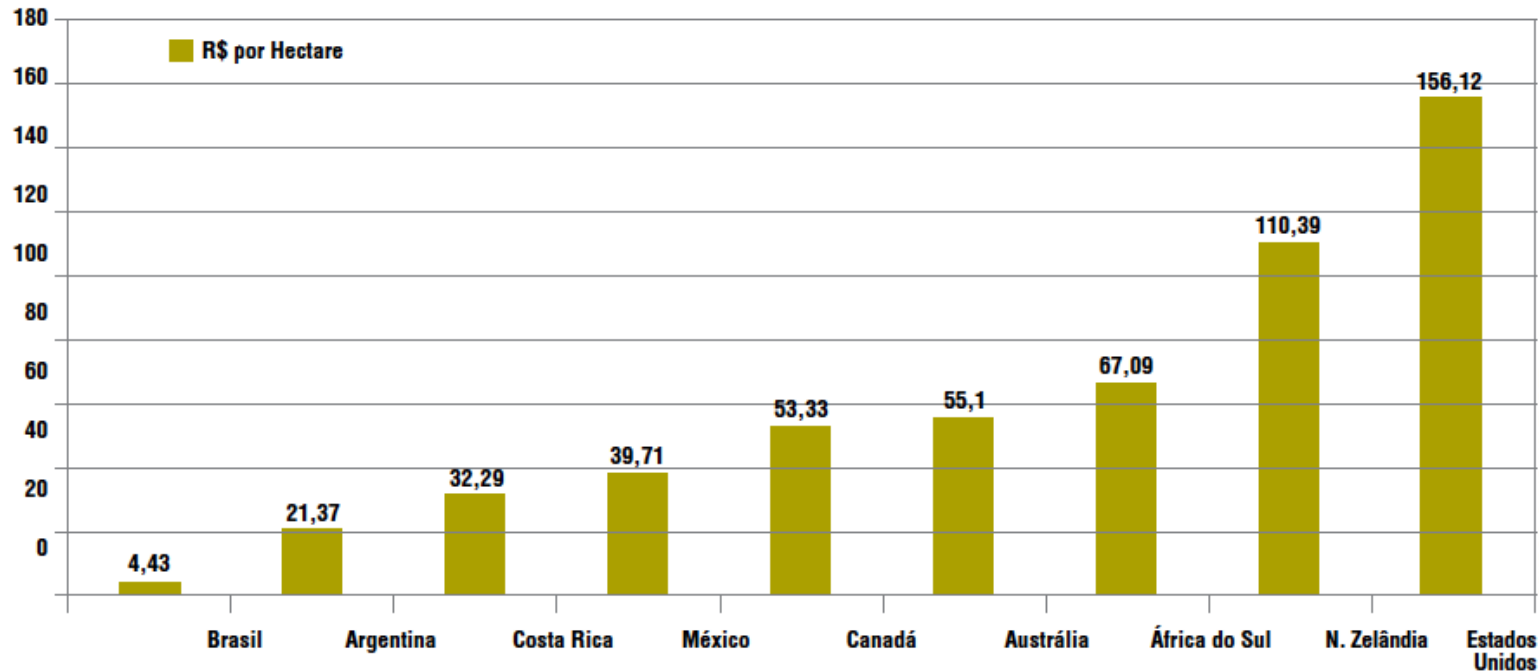
Rodrigo Medeiros
Vice President

Context



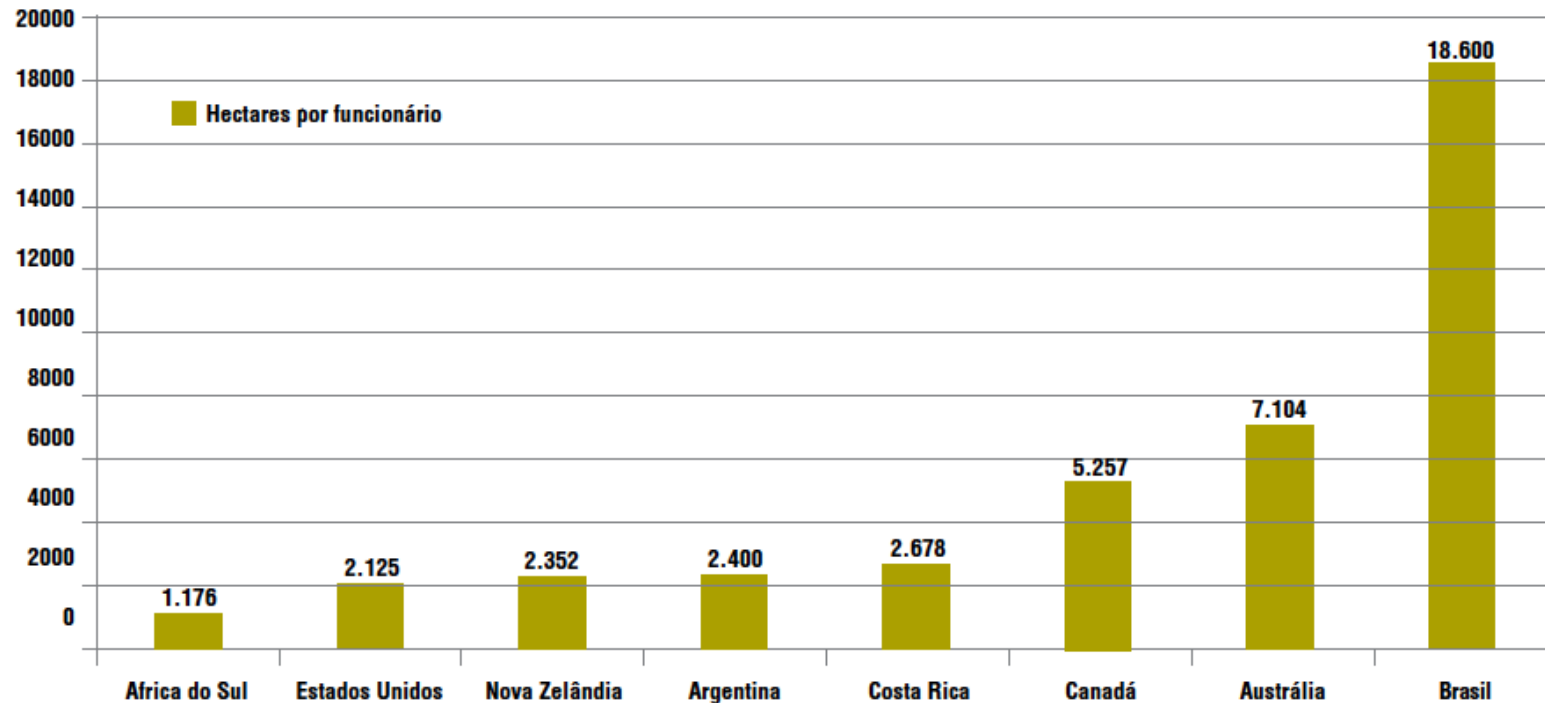
Context

FIGURE 2: Investment per hectare of conservation unit in different countries.



Context

FIGURE 3: Number of employees per hectare protected in Brazil and in other countries.



The study

Economic analysis of goods and services effectively or potentially provided by Brazilian Protected Areas

- **Forest products,**
- **Public use,**
- **Carbon,**
- **Water and**
- **Sharing of tax revenue**

1. Forest Products in PAs in Amazonia

TABLE 5: National and State Forests in the Amazon Biome

	FORESTS (HECTARES)	NUMBER
Federal	18,952,727	33
Estates	9,367,868	10
Total	28,320,595	43

SOURCE: MMA/CNUC, 2010 NOTE: updated in August 30th, 2010

TABLE 6: Estimate of production and economical potential of roundwood exploitation in Federal and State Forests in the Amazon Biome

SCENARIOS	TOTAL AREA (HECTARES)	PRODUCTIVITY (M³/HA)	PERCENTAGE OF OPERATIONAL AREA	VOLUME PRODUCED (M³/YEAR)	POTENTIAL VALUE PRODUCED (MILLION R\$ PER YEAR)	POTENTIAL VALUE PRODUCED IN 25 YEARS (MILLION R\$)
1	28,320,595	19.4	56	12,306,998	1,255	31,383
2	28,320,595	25.0	78	22,090,064	2,253T	56,330

2. Public Use (tourism) activities

National Parks

NUMBER OF UNITS INCLUDED IN THE CATEGORY	NUMBER OF VISITORS (2016)	ECONOMIC IMPACT: CONSERVATIVE SCENARIO (MILLION R\$/YEAR)	ECONOMIC IMPACT: OPTIMISTIC SCENARIO (MILLION R\$/YEAR)
67	13,759,367	1,570.2	1,776.3

All PAs Categories

SPHERE OF CONSERVATION UNIT	NUMBER OF UNITS INCLUDED IN THE CATEGORY	NUMBER OF VISITORS (2016)	ECONOMIC IMPACT: CONSERVATIVE SCENARIO (MILLION R\$/YEAR)	ECONOMIC IMPACT: OPTIMISTIC SCENARIO (MILLION R\$ /YEAR)
Federal	310	17,508,367	1,797.2	2,036.9
State	388	2,443,389	161.2	184.6
Total	698	19,951,756	1,958.4	2,221.5

3. Carbon Stocks

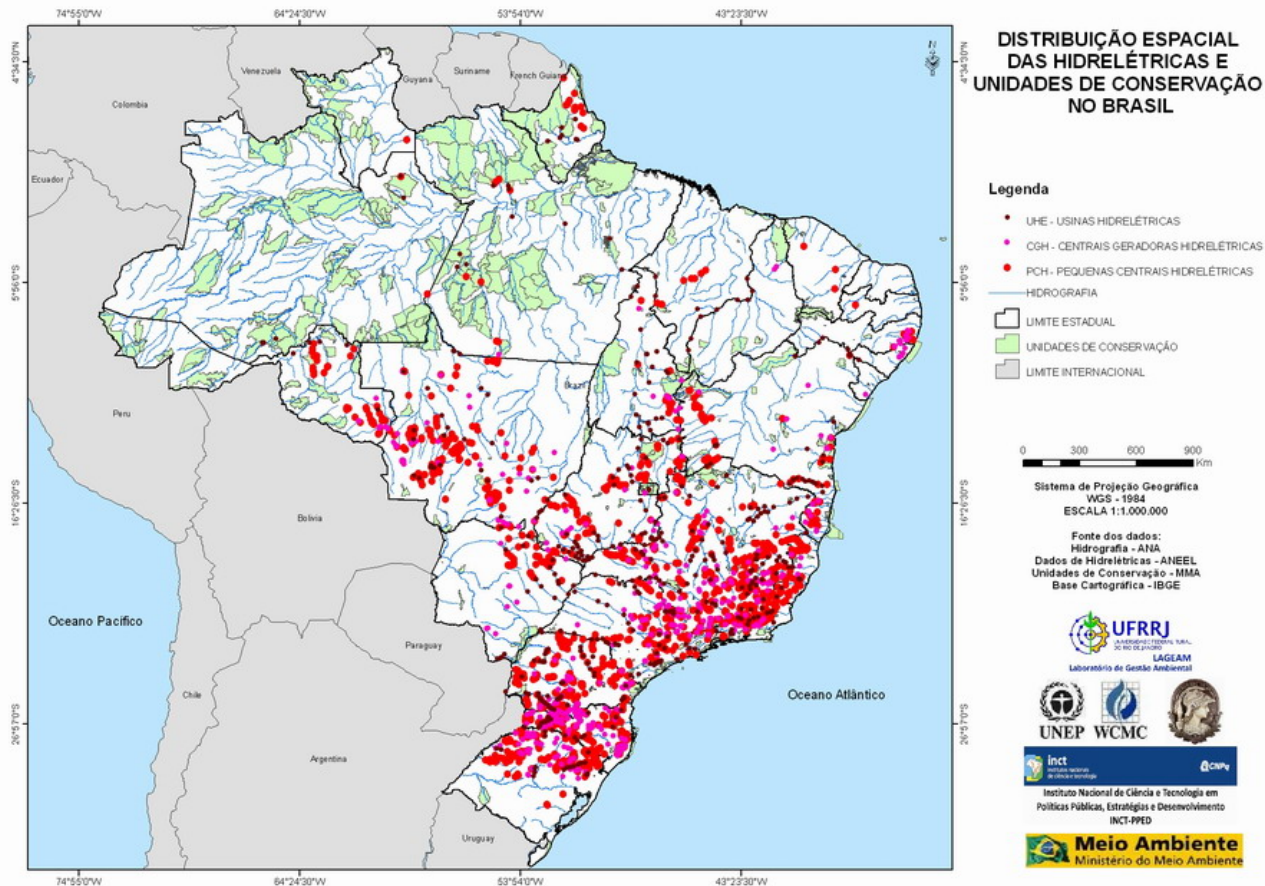
STRICT PROTECTION CONSERVATION UNITS				
BIOME	AREA OF THE CONSERVATION UNITS (HA)	AVOIDED DEFORESTATION IN THE CONSERVATION UNITS (HA)	VOLUME OF C (TC)	VALUE OF THE STOCK OF AVOIDED EMISSIONS (MILLIONS OF R\$)
Amazon	39,687,400	7,937,480	1842,960,376	28,661
Cerrado	5,203,200	4,162,560	206,046,720	7,006
Mata Atlântica	2,365,600	1,892,480	136,258,560	4,633
Caatinga	907,600	726,080	35,940,960	1,222
Pantanal	612,100	489,680	24,239,160	824
Total		15,208,280	1,245,445,776	42,346

SUSTAINABLE USE CONSERVATION UNITS				
BIOME	AREA OF THE CONSERVATION UNITS (HA)	AVOIDED DEFORESTATION IN THE CONSERVATION UNITS (HA)	VOLUME OF C (TC)	VALUE OF THE STOCK OF AVOIDED EMISSIONS (MILLIONS OF R\$)
Amazon	60,766,600	12,153,320	1,003,864,232	34,131
Cerrado	7,886,100	6,308,880	220,810,800	7,508
Mata Atlântica	5,325,500	4,260,400	238,582,400	8,112
Caatinga	4,314,200	3,451,360	120,797,600	4,107
Pantanal	0	0	0	0
Total		26,173,960	1,584,055,032	53,858
Total value				96,204

* INCLUDES THE UNITS IN THE CATEGORY PRIVATE NATURAL HERITAGE RESERVE (RPPN)

4. Water

*Parks, people, planet:
inspiring solutions*



4. Water

Provision

DESCRIPTION	NUMBER OF CAPTURE POINTS	%	NON-SEASONAL ANNUAL CAPTURE VOLUME (M ³)	%
Capture within conservation units	77	2.8	329,633,421	8.6
Capture downstream of conservation units	273	10.0	997,245,710	26.1
Capture without the contribution of conservation units	2,377	87.2	2,492,731,107	65.3
Total	2,727	100	3,819,610,238	100.0

Irrigation

DESCRIPTION	NUMBER OF CAPTURE POINTS	%	NON-SEASONAL ANNUAL CAPTURE VOLUME (M ³)	%
Capture within conservation units	411	1.9	7,599,020	0.1
Capture downstream of conservation units	6,530	30.2	455,580,120	3.8
Capture without the contribution of conservation units	14,706	67.94	11,640,081,844	96.2
Total	21,647	100	12,103,260,984	100.0

5. Tax Revenue

STATE	TOTAL PERCENTAGE OF THE ECOLOGICAL VAT	COEFFICIENT ADOPTED FOR THE CU CRITERIA	VALUE OF THE ECOLOGICAL VAT IN 2009 (R\$ MILLION)	VALUE OF THE ECOLOGICAL VAT GENERATED BY THE CU CRITERIA (R\$ MILLION)
Acre	5%	5%	-	1.5
Amapá	1.4%	1.4%	1.0	1.0
Mato Grosso	5%	5%	-	68.4
Mato Grosso do Sul	5%	5%	39.4	39.5
Minas Gerais	1%	0.5%	45.4	22.7
Paraná	5%	2.5%	124.1	62.1
Pernambuco	15%	1%	-	13.5
Rio de Janeiro	2.5%	1.1%	37.9	17.1
Rondônia	5%	5%	90.7	90.7
São Paulo	0.5%	0.5%	78.2	78.2
Tocantins	13%	3.5%	29.7	8.0
Total			446.4	402.7

CONSERVAÇÃO
INTERNACIONAL

Brasil



Thanks
people need nature to thrive

rmedeiros@conservation.org