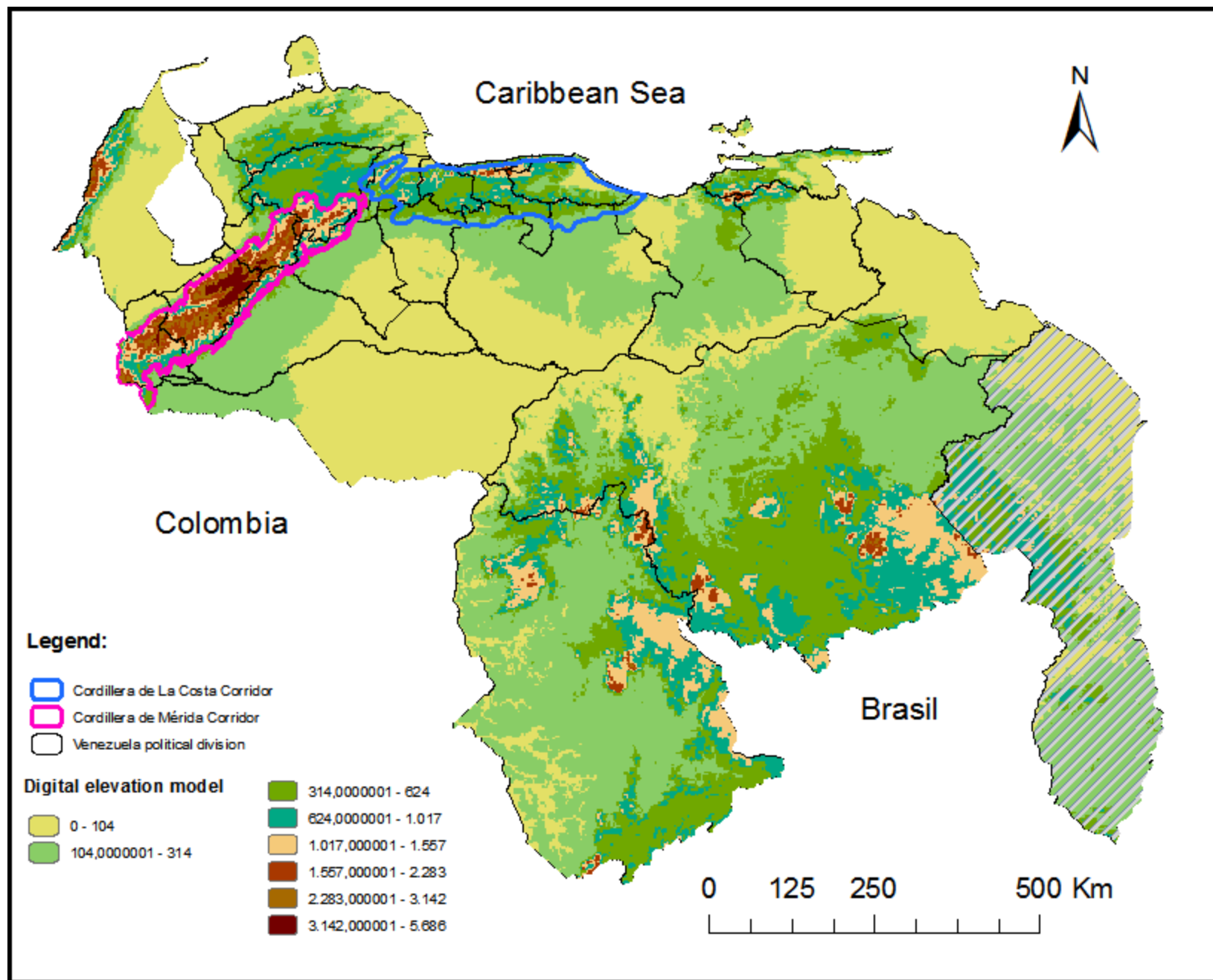


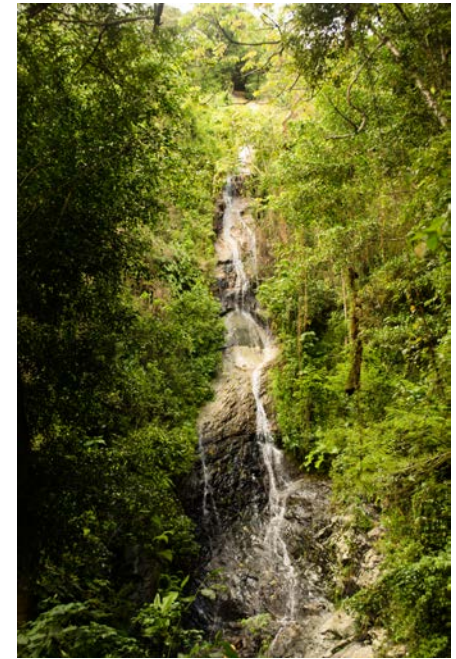
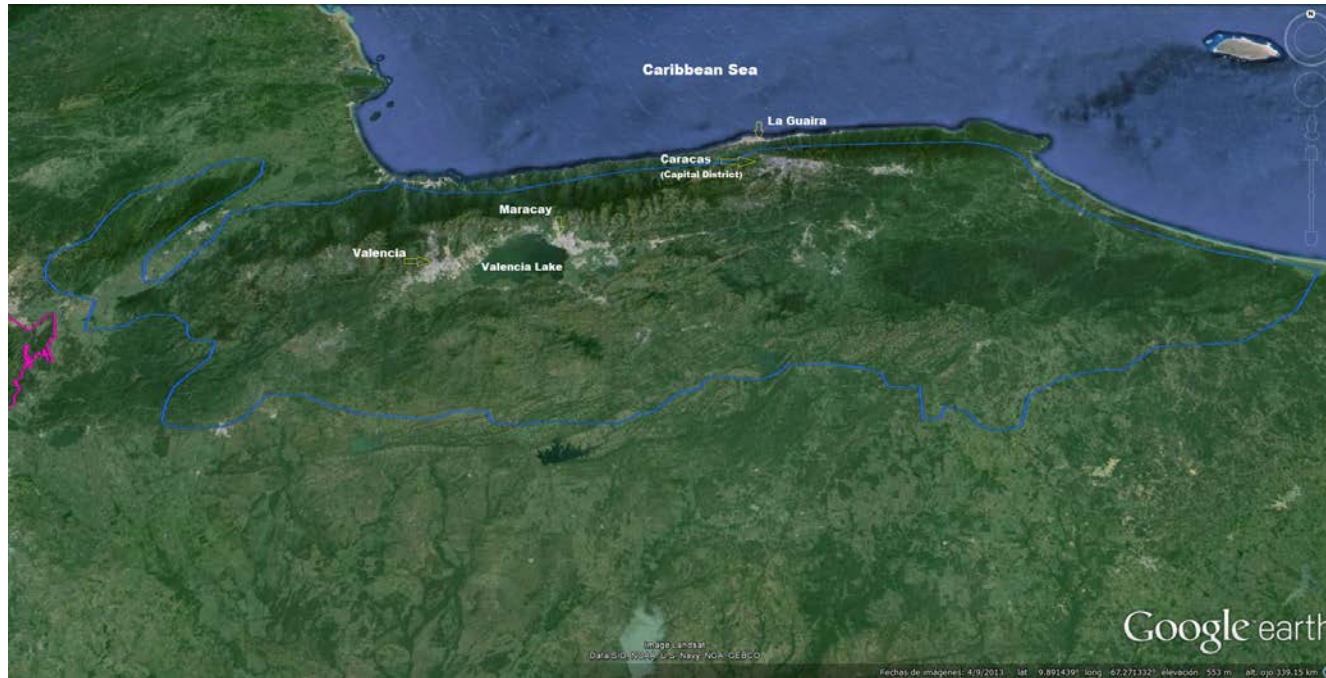
# Connectivity through “Corridors” across Venezuelan Mountain ranges

Edgard Yerena and Shaenandhoa García Rangel  
Departamento de Estudios Ambientales  
Universidad Simón Bolívar

[eayerena@yahoo.com](mailto:eayerena@yahoo.com)



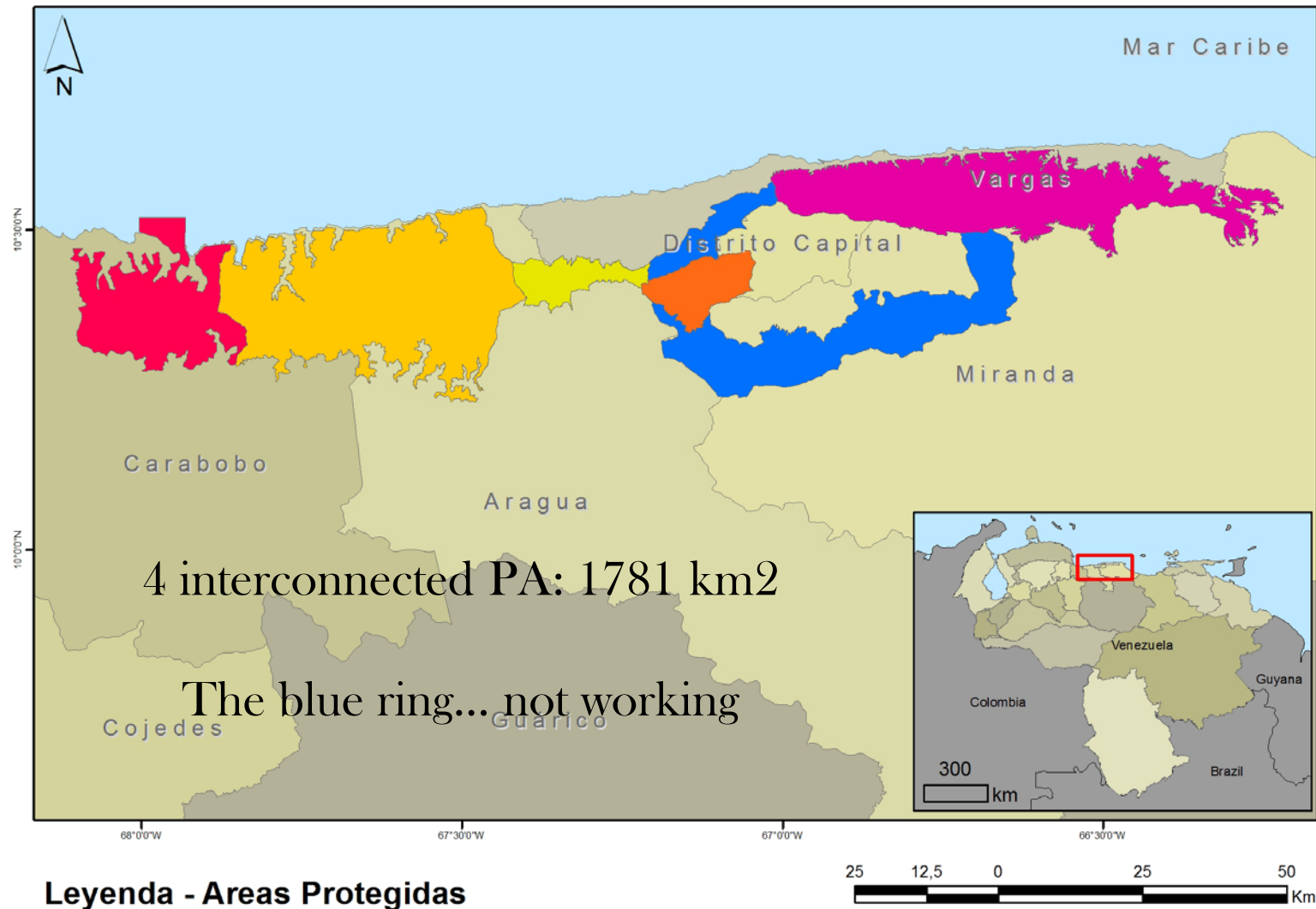
# Cordillera de la Costa Corridor



PN. El Ávila (Morón-Zambrano 2012)

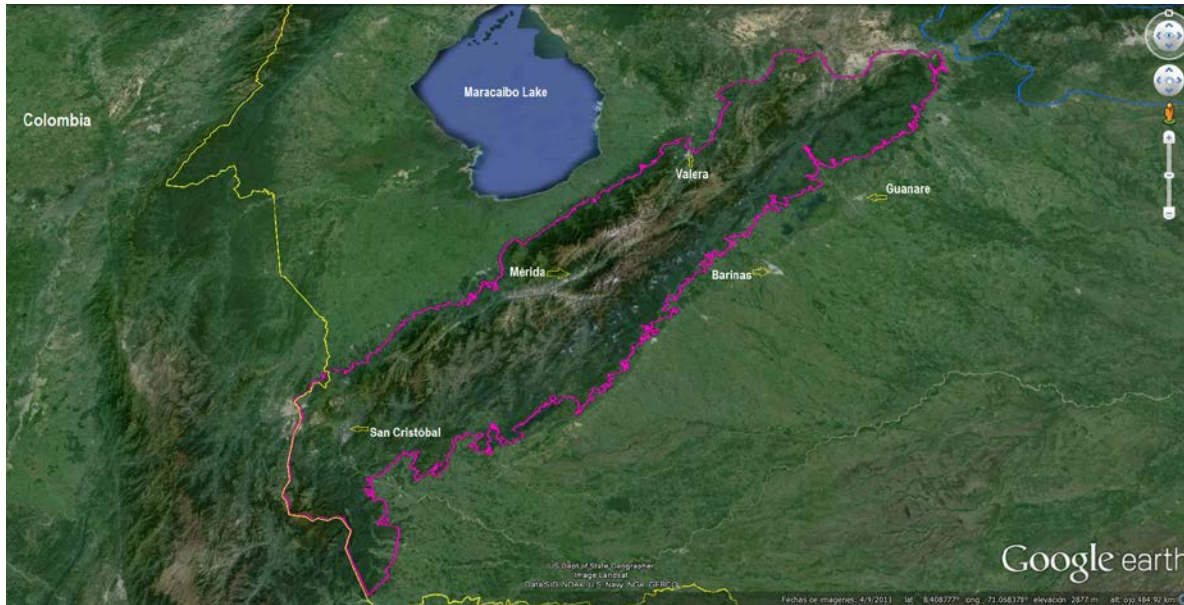
- Tropical mountains ecosystems  
0 to 2800 m.a.s.l.  
170 km axis  
Xeric to cloud forest
- Biodiversity hotspot
- Most densely populated region
- 2600 km<sup>2</sup> of PA
- Oldest Venezuelan PAs

# Cordillera de la Costa Corridor

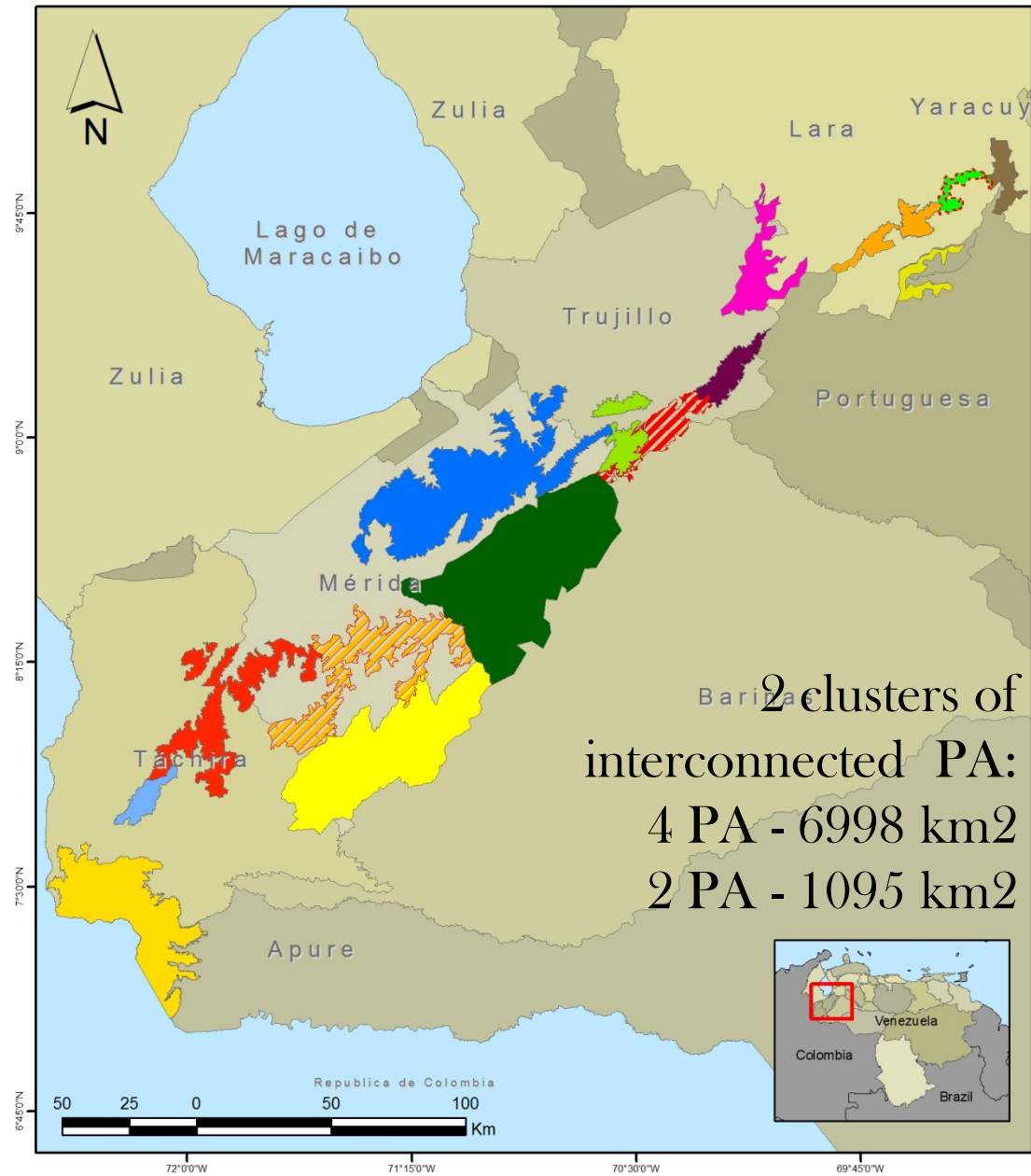




# Cordillera de Mérida Corridor



- Tropical Andes ecosystems
  - 200 to 4,980 m.a.s.l
  - 428 km axis
  - Evergreen forests to “paramo” islands
  - Steep slopes
- Very high plant endemism
- Pleistocene refuges
- Tourism and hydroelectrical power generation
- Design criteria:
  - Andean bear
  - As much forest as possible
  - As wider altitudinal gradient as possible



2 clusters of  
interconnected PA:  
4 PA - 6998 km<sup>2</sup>  
2 PA - 1095 km<sup>2</sup>




#### Leyenda - Corredores biológicos - Áreas Protegidas

##### Corredor Propuesto

-  Ramal de Calderas
-  Sierra de Portuguesa
-  Pueblos del Sur

##### Áreas Protegidas

-  P.N. El Guache
-  P.N. Dinira
-  P.N. Yacambú
-  P.N. Terapalma
-  P.N. El Tamá
-  P.N. Sierra Nevada
-  P.N. Tapo-Caparo
-  P.N. Sierra de la Culata
-  P.N. Chorro El Indio

-  P.N. Páramo Guaramacal
-  P.N. Páramos del Batallón y la Negra
-  M.N. Teta de Niquitao

Corredor Cordillera  
de Mérida

# Lessons Learned

---

- Designed and implemented with a top-down approach:
  - Parks Service.
- Connectivity sought through Protected Areas:
  - mostly category II.
- Connectivity as “Corridors” is a very appealing and easy to understand concept.
- Having a charismatic umbrella species helps.
- Match corridors with real human needs.

# Lessons Learned

- Seek support from local communities.
- Corridors as a unifying concept providing communities and NGOs a focus for their goals.







Andean bear - Sierra de Portuguesa Project  
Eli Shuenandoa García-Ramírez Ph.D candidate  
Wildlife Research Group - University of Cambridge  
elshuenandoa@wildlife.cam.ac.uk

Gracias