

SKYTRUTH



A satellite image of Earth from space, showing the Western Hemisphere. North America is visible in the upper left, with the Gulf of Mexico and Central America below it. The surrounding oceans are a deep blue, and white clouds are scattered across the globe. The curvature of the Earth is visible at the top and bottom edges.

If you can see it...

You can change it.













SKYTRUTH

Gulfport

Mobile Bay

Pensacola

Panama City  
Beach

NEW ORLEANS

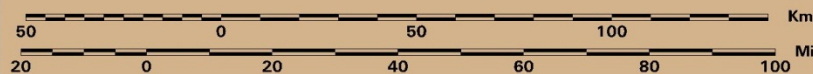
CLOUDS

Port Fourchon

OIL SLICKS AND SHEEN

INSET

NASA / MODIS (Terra) Image Acquired April 29, 2010



NASA image data provided courtesy of the MODIS Rapid Response team

Additional image processing and image analysis by SkyTruth



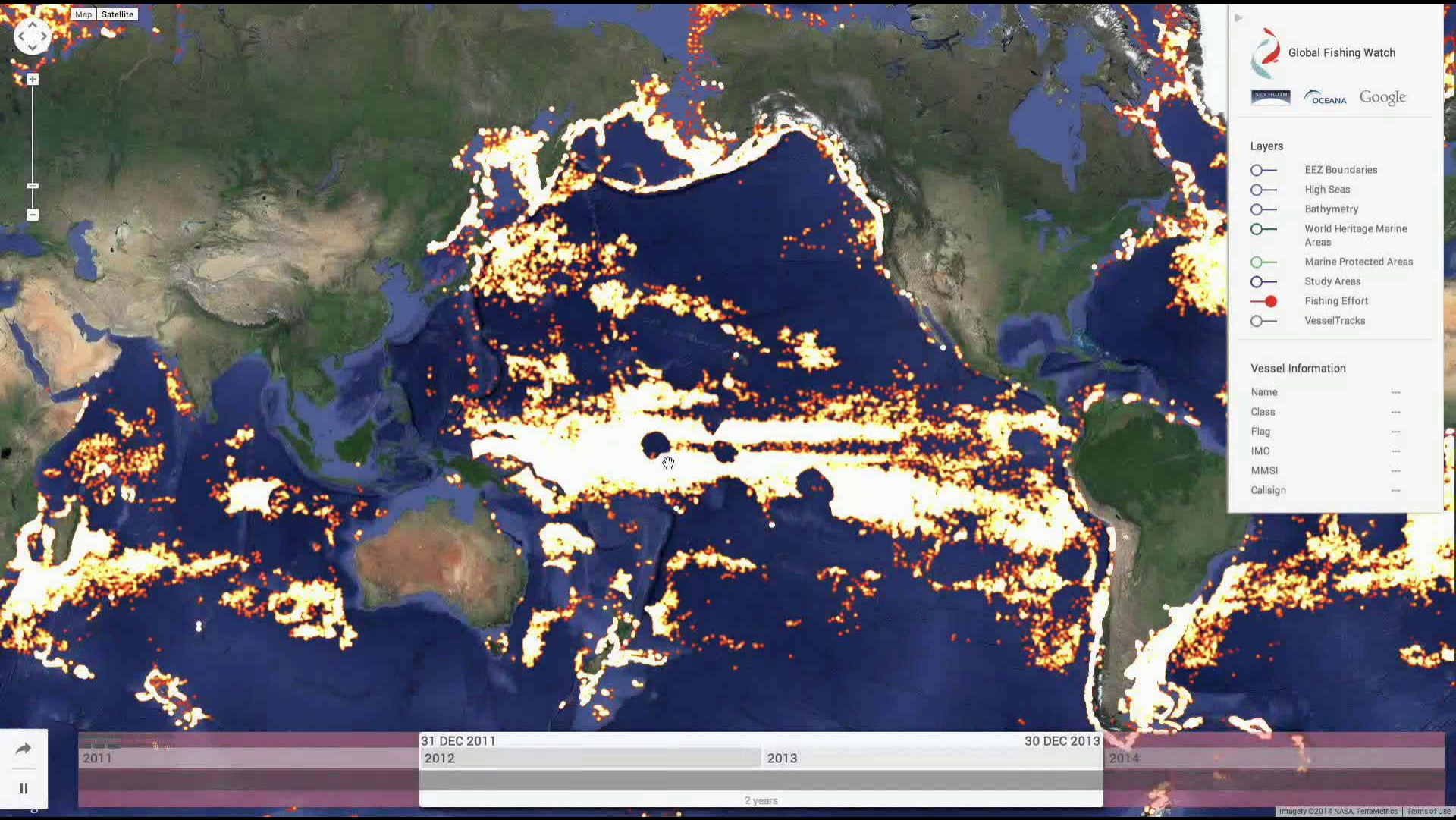












Global Fishing Watch

OCEANA Google

Layers

- EEZ Boundaries
- High Seas
- Bathymetry
- World Heritage Marine Areas
- Marine Protected Areas
- Study Areas
- Fishing Effort
- VesselTracks

Vessel Information

Name	---
Class	---
Flag	---
IMO	---
MMSI	---
Callsign	---





# Global Fishing Watch

**[WWW.GLOBALFISHINGWATCH.ORG](http://WWW.GLOBALFISHINGWATCH.ORG)**