



Luc Hoffmann
Institute

SCIENCE
TO ACTION



Dynamics of the Conservation Estate

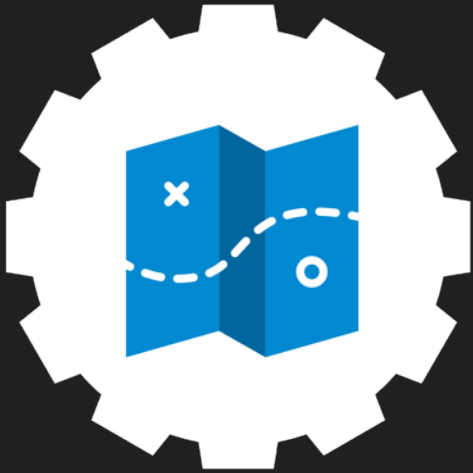
Nyeema Harris, PhD | Director's Fellow | Luc Hoffmann Institute, WWF

© NYEEMA C HARRIS

Take-home messages

- Coverage is not enough or likely to be sustainable in future
- Inclusive definition of protected areas
- Effectiveness of protected areas based on conservation outcomes
- Importance of attribution for forest cover changes

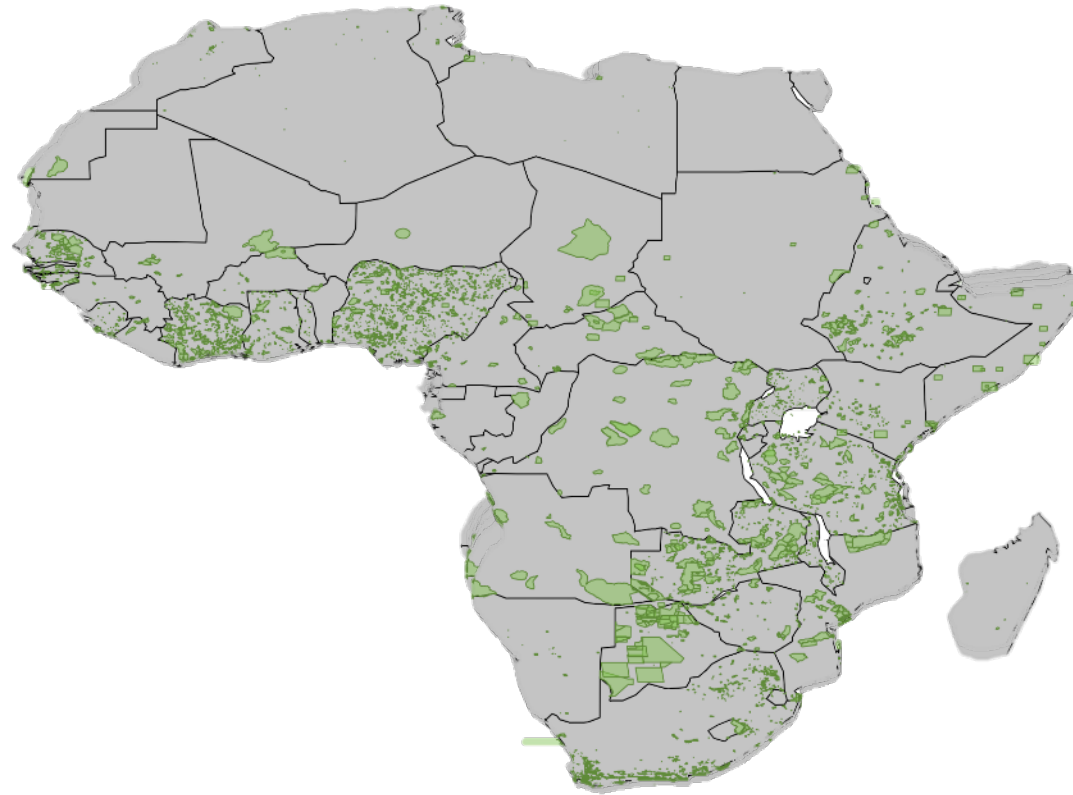
CHALLENGE



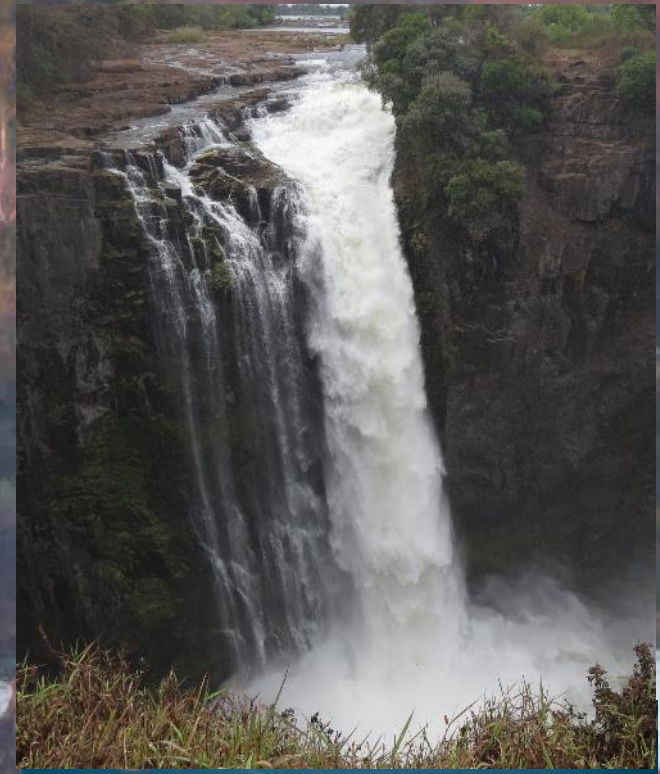
PLACE-BASED CONSERVATION EFFECTIVENESS

Coverage is **not** enough

Present



MIOMBO Woodlands



Governance

State-owned and
managed

Private-owned
and managed

Community-owned
and (co)managed


State-owned and
co-managed*

Private-leased
and managed

Community-leased
and (co)managed

*Civil-society organizations

Pathway to impact and audiences

- 
- CONVENTION OF BIOLOGICAL DIVERSITY
 - GLOBAL ENVIRONMENTAL FACILITY
 - IUCN WORLD COMMISSION ON PROTECTED AREA

- WWF PROTECTED AREA EVALUATION FRAMEWORK
(Performance indicators)

- Southern Africa Development Community
- WWF Miombo secretariat

- National Biodiversity Strategy and Action Plans
- WWF Country offices

Consultative and Iterative

Project Development



© NYEEMA C HARRIS

Quotes from stakeholders

"Current levels of protection isn't sustainable... *What can we afford to forfeit?*"

We're missing markets, mostly we don't even know what's valuable inside

"Well, your beloved elephants are problems but you seem to appreciate their destruction and on my behalf"

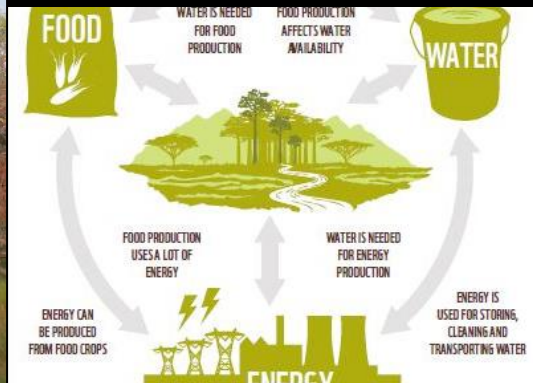
"I care *if* my family eats, you care *how* my family eats"

Indicators of Protected area *EFFECTIVENESS*

Forest Loss



Ecosystem Services



Illegal Activity



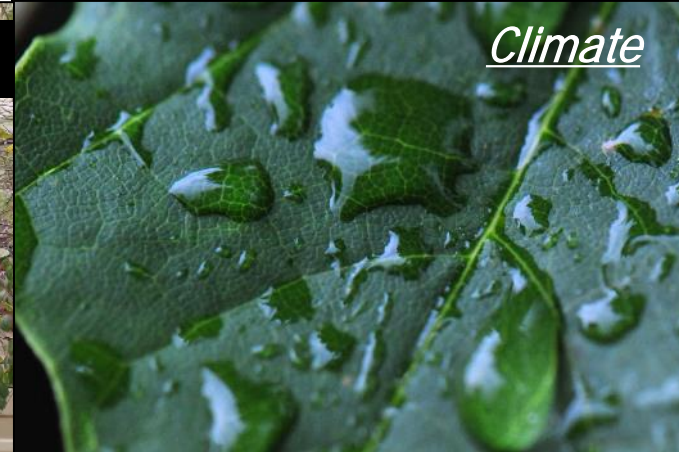
Population Trends



Community Benefits



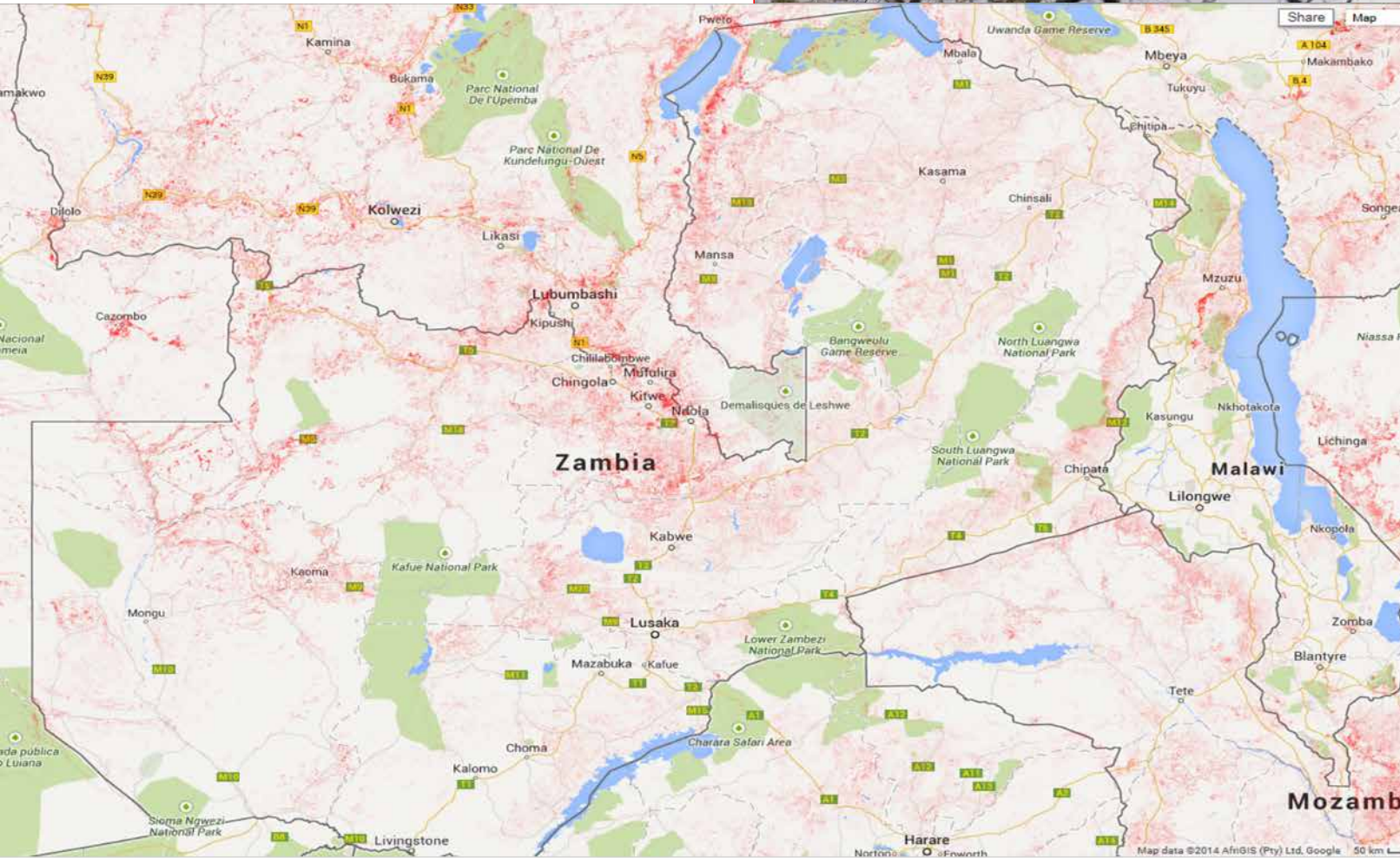
Climate



High-Resolution Global Maps of 21st-Century Forest Cover Change

Deforestation

M. C. Hansen,^{1*} P. V. Potapov,¹ R. Moore,² M. Hancher,² S. A. Turubanova,¹ A. Tyukavina,¹ D. Thau,² S. V. Stehman,³ S. J. Goetz,⁴ T. R. Loveland,⁵ A. Kommareddy,⁶ A. Egorov,⁶ L. Chini,¹ C. O. Justice,¹ J. R. G. Townshend¹



© NYEEMA C HARRIS

High-Resolution Global Maps of 21st-Century Forest Cover Change

M. C. Hansen,^{1*} P. V. Potapov,¹ R. Moore,² M. Hancher,² S. A. Turubanova,¹ A. Tyukavina,¹ D. Thau,² S. V. Stehman,³ S. J. Goetz,⁴ T. R. Loveland,⁵ A. Kommareddy,⁶ A. Egorov,⁶ L. Chini,¹ C. O. Justice,¹ J. R. G. Townshend¹

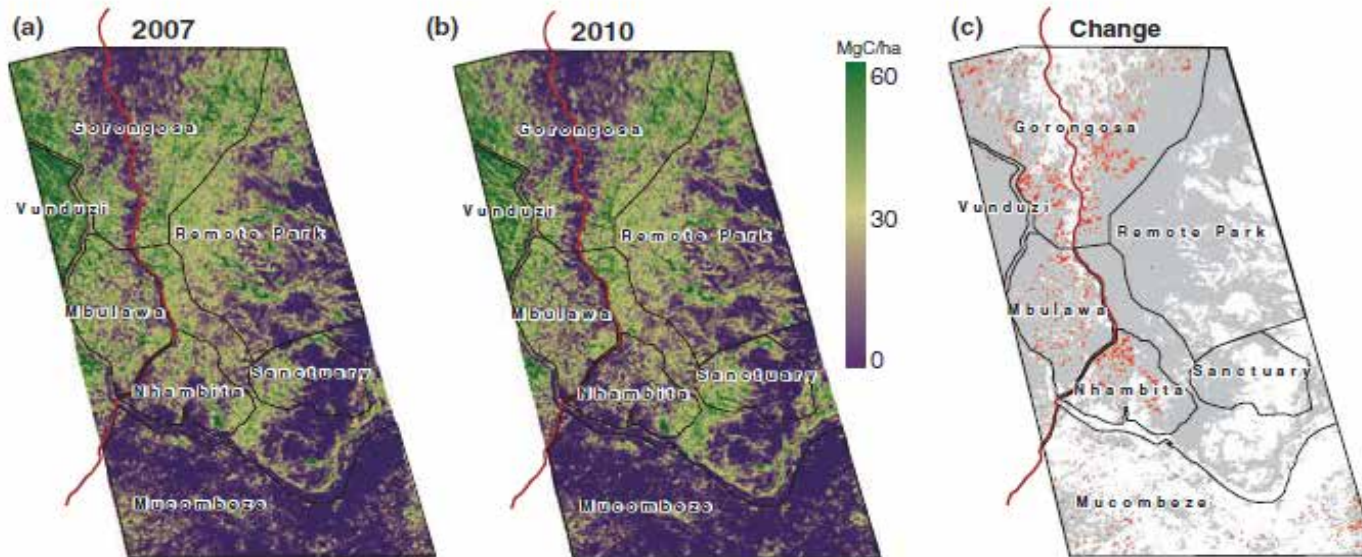
Global Change Biology (2011), doi: 10.1111/j.1365-2486.2011.02551.x

Quantifying small-scale deforestation and forest degradation in African woodlands using radar imagery

CASEY M. RYAN*, TIMOTHY HILL*†, EMILY WOOLLEN*, CLAIRE GHEE*, EDWARD MITCHARD*, GEMMA CASSELLS*, JOHN GRACE*†, IAIN H. WOODHOUSE* and MATHEW WILLIAMS*†

Deforestation

Degradation



© NYEEMA C HARRIS

High-Resolution Global Maps of 21st-Century Forest Cover Change

M. C. Hansen,^{1*} P. V. Potapov,¹ R. Moore,² M. Hancher,² S. A. Turubanova,¹ A. Tyukavina,¹ D. Thau,² S. V. Stehman,³ S. J. Goetz,⁴ T. R. Loveland,⁵ A. Kommareddy,⁶ A. Egorov,⁶ L. Chini,¹ C. O. Justice,¹ J. R. G. Townshend¹

Global Change Biology (2011), doi: 10.1111/j.1365-2486.2011.02551.x

Quantifying small-scale deforestation and forest degradation in African woodlands using radar imagery

CASEY M. RYAN*, TIMOTHY HILL*†, EMILY WOOLLEN*, CLAIRE GHEE*, EDWARD MITCHARD*, GEMMA CASSELLS*, JOHN GRACE*†, IAIN H. WOODHOUSE* and MATHEW WILLIAMS*†

Deforestation

Degradation

Attribution



© NYEEMA C HARRIS

Take-home messages

- Inclusive definition of protected areas
- Effectiveness of protected areas based on conservation outcomes
- Importance of attribution for forest cover changes
- Coverage is not enough or likely to be sustainable in future

www.luchoffmanninstitute.org

Dynamics of the Conservation Estate

Nyeema Harris, PhD | Director's Fellow | Luc Hoffmann Institute, WWF
nharris@wwfint.org

