

Amazon Protected Areas Program

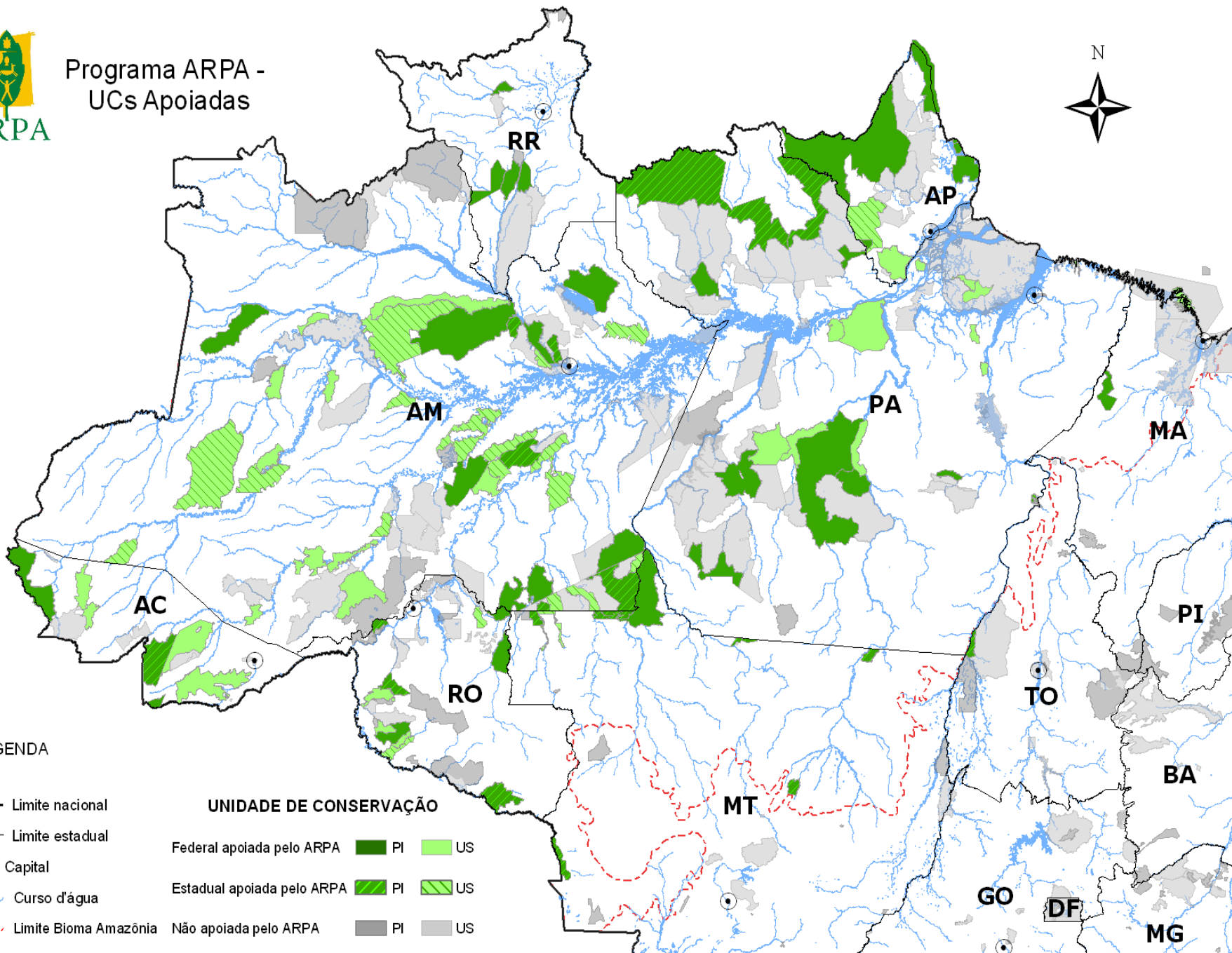


Ministério do
Meio Ambiente

GOVERNO FEDERAL
BRASIL
PAÍS RICO É PAÍS SEM POBREZA



Programa ARPA - UCs Apoiadas



LEGENDA

- Limite nacional
- Limite estadual
- Capital
- Curso d'água
- - - Limite Bioma Amazônia

UNIDADE DE CONSERVAÇÃO

- | | | |
|----------------------------|----|----|
| Federal apoiada pelo ARPA | PI | US |
| Estadual apoiada pelo ARPA | PI | US |
| Não apoiada pelo ARPA | PI | US |

The Program

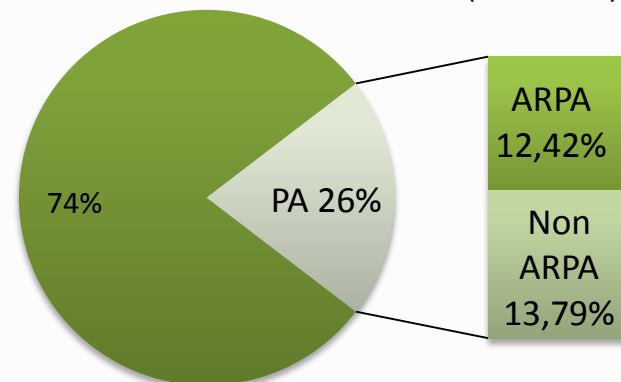
Phase I - 2003-2010

- . Expedite the creation of PA in the Amazon Biome: target 18 million ha – **24 million ha created**;
- . Start consolidation of PA: target 7 million ha – **8,5 million ha consolidated**;
- . Update the Map of Priority Conservation Areas; and
- . Create the Protected Areas Fund (FAP) to finance ARPA PA: € 17,5 million accrued in 2010.

Phase 2 - 2010-2015

- . Create PA (13,5 MM ha);
- . Further consolidate PA (32 MM ha);
- . Expand the FAP; and develop innovative financial mechanisms.
- . Intermediary targets reached – up to 2015 all targets reached

Amazon Biome Area under ARPA today
(1000 ha)



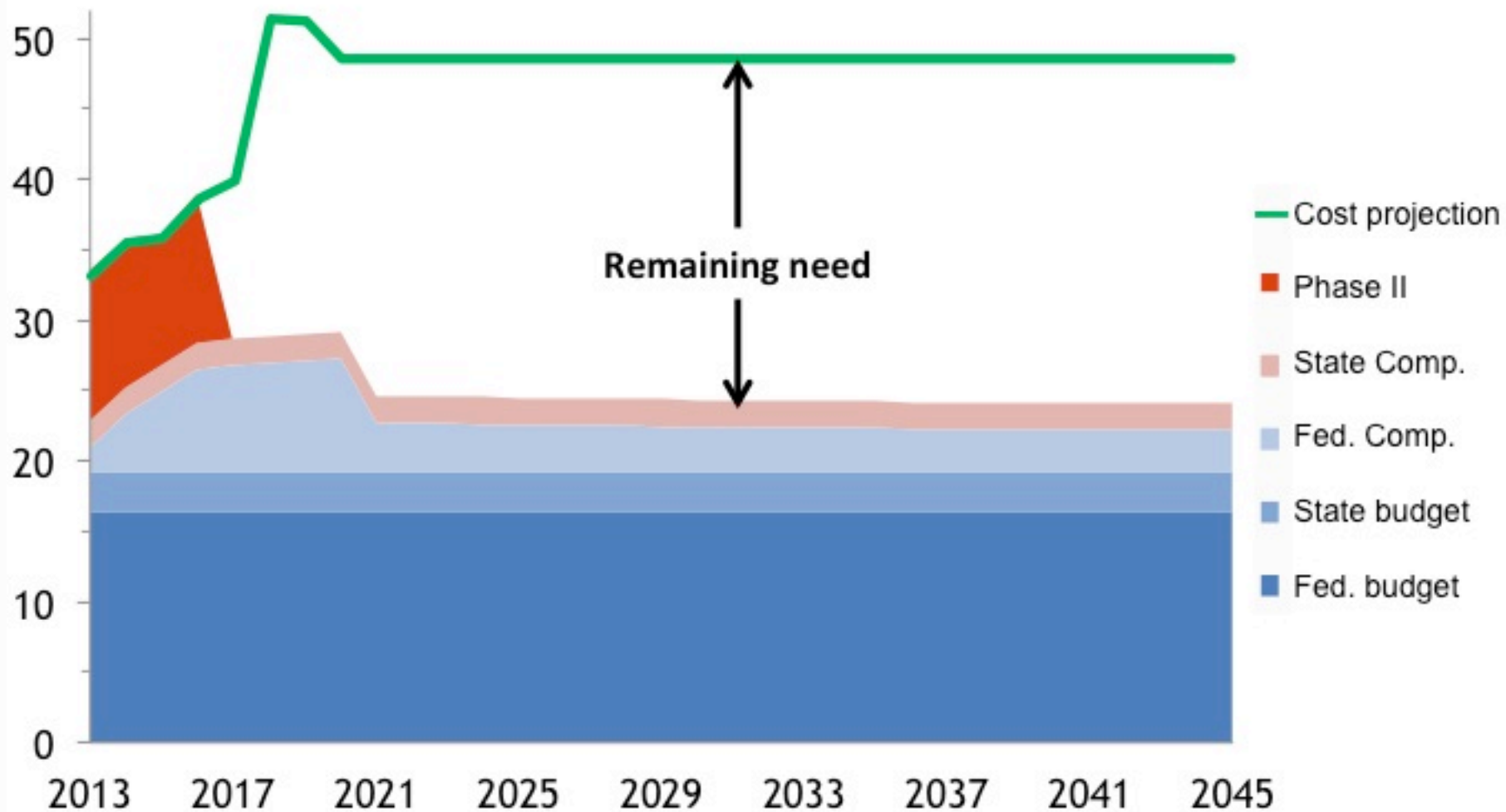
Phase III – 2014-2039

- Transition – grants and donations to national resources – a reality now, but needs strengthening – gradual transition in 25 years to be supported by USD 215 million fund.
- Expenditure nature – recurrent costs represent over 70% of PA costs covered by the Program
 - These costs could not be absorbed by Government if there wasn't a third phase;
 - The fiduciary arrangement proposed for phase III would require immense fundraising – no longer compatible with current economic scenario and Brazil's position internationally.

Expenditure

		Phase I*	%	Phase II**	%	Outlines
Investment	Infrastructure	\$4,52	5%	\$9,10	8%	Public use facilities, general facilities retrofit, improvement and construction
	Equipment	\$13,20	16%	\$12,23	11%	Vehicle (trucks, boats, rafts, barges, etc.) and equipment acquisition
Recurrent Costs						Development of studies for management plans, buffer zone integration, sustainable use of natural resources, participative management, land tenure reports R&D for inventories and monitoring PA financing Creation of new PA (environ, social and land diagnostics)
	Consultancy	\$9,81	12%	\$21,01	18%	
	PA Management	\$15,97	19%	\$42,02	36%	Signaling and fencing, participative management, property limit confirmation, public consultations
	Operational costs	\$39,18	47%	\$30,91	27%	Stipend and allowances (policing and protection, buffer zone integration, management plan development, attending courses and capacity building), transportation fares (air, land and river), fuel and gas, equipment and vehicle maintenance, daily expenses.
	Σ	\$82,68		\$115,27		

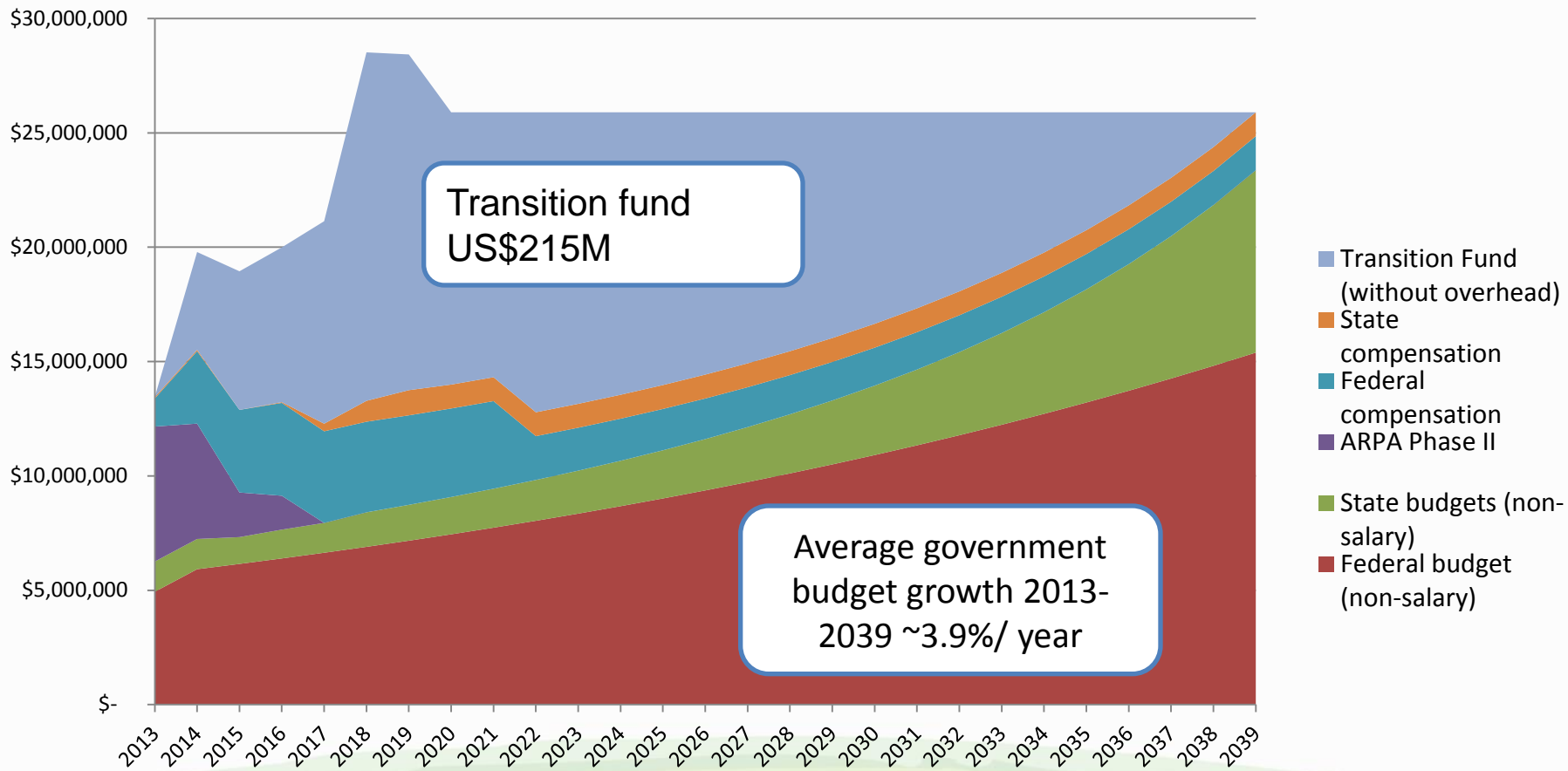
ARPA for Life - Future Projection



Transition fund

“Arpa for life” – estimates for completing ARPA
(US\$M, USD reais de 2013)

Non-salary costs by revenue source



An aerial photograph showing a wide, winding river with a muddy, brownish-green hue. The river meanders through a vast, dense forest of lush green trees. The forest appears to be a tropical or subtropical rainforest. The river's path is highly irregular, with several sharp turns and loops. The overall scene is a natural, undisturbed landscape.

www.programaarpa.gov.br