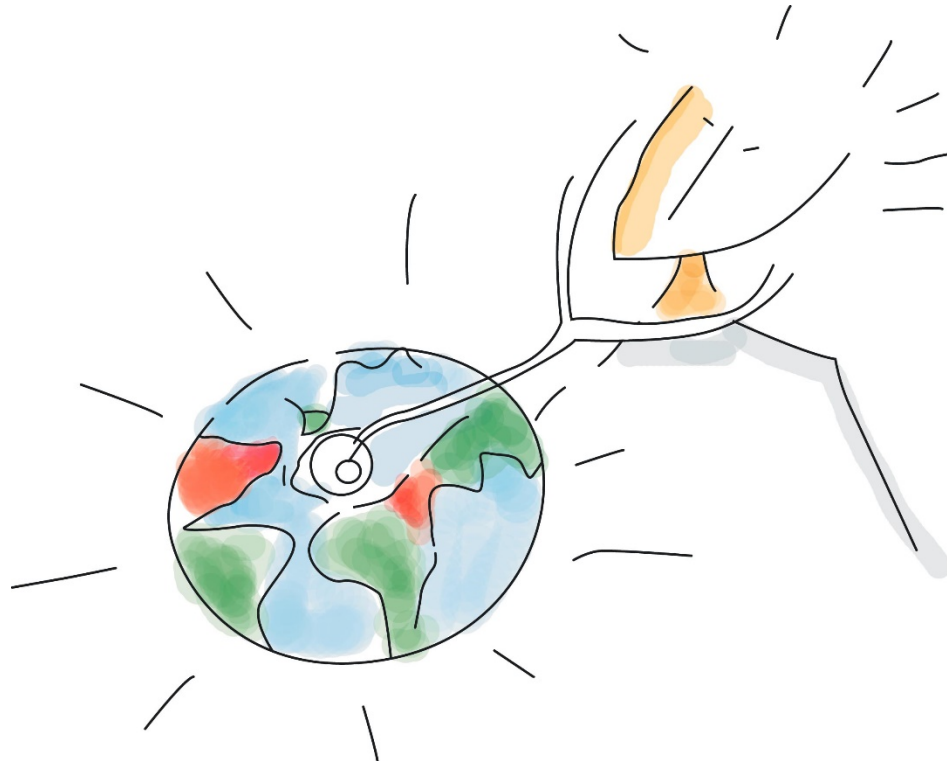


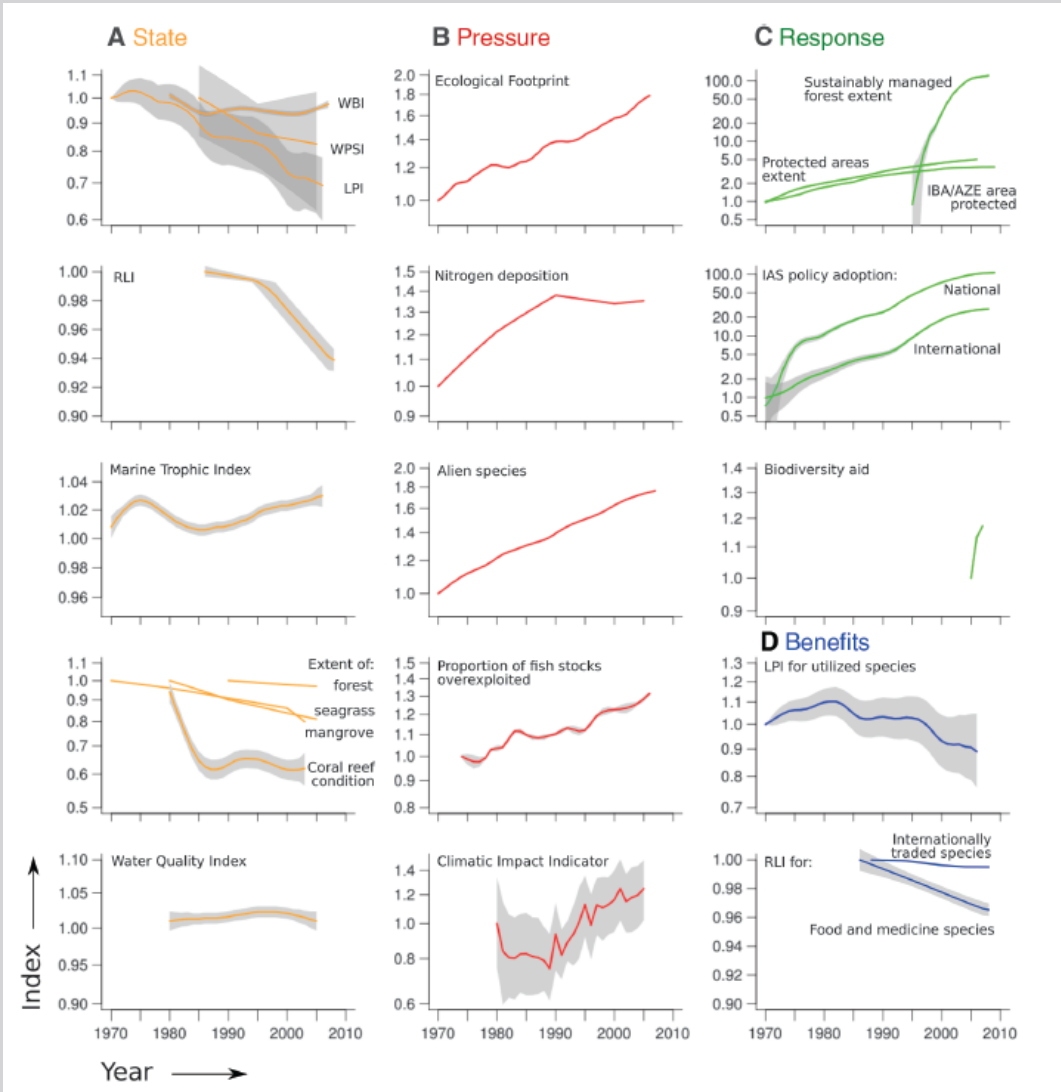
Protected Area Management Effectiveness

Global progress and lessons learnt



International Context

2010 Biodiversity Indicator Results





CBD Target 11 calls for at least 17 per cent of terrestrial and inland water, and 10 per cent of coastal and marine areas to be conserved through **effectively and equitably managed**, ecologically representative and well-connected systems of protected areas

International Context

CBD Programme of Work on Protected Areas (PoWPA)



- Implement management effectiveness evaluations of at least 30% of each Party's protected areas by 2010... (increased to 60% by 2015 at COP10)
- Include information resulting from evaluation of protected areas management effectiveness in national reports under the Convention on Biological Diversity.
- Implement key recommendations arising from site- and system-level management effectiveness evaluations, as an integral part of adaptive management strategies.

A Diversity of Methodologies



Methodologies vary in terms of

- Level of detail in assessment (rapid, intermediate, in-depth)
- Scale (single site, system)
- Type of data collected (qualitative, quantitative, mixed)
- WCPA elements assessed
- Management dimensions addressed
- Self assessment vs External assessment
- Internal or public reporting

PAME at VI World Parks Congress, Sydney

Three sessions directly on PAME

1. Global lessons (you are here)
2. Making assessments count
– Today at 13:30 here in Hall 3A1
3. Closing the loop
Monday, 15:30 Hordern Room

Plus

1. Green List of PAs
Monday 13:30 in Hall 3A1
2. World Heritage Outlook
Monday 15:30 Southee North

