



IUCN
WORLD PARKS
CONGRESS
SYDNEY 2014

The Management Effectiveness Tracking Tool

Neil Burgess, Marcel de Lima, Naomi Kingston, April Eassom (UNEP-WCMC), Marc Hockings and Fiona Leverington (IUCN WCPA), Lauren Coad, Kathryn Knights (PA solutions), PJ Stephenson, Isaac Malugu, Elisabeth Ngoye (WWF) and many others....



What is the METT?

- Simple tool for assessment management quality at protected areas
- Applied at more than 4,000 PA globally
- Core part of monitoring by GEF, WWF, CEPF, CI and others
- Can be used to track global indicators. Such as CBD Aichi Targets

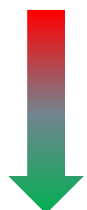
The METT

A score card evaluation of context, inputs, and process in a protected area

Conducted by GEF, UNDP as well as multiple other organizations and countries

Collects information on threat, objectives, staffing, budget, designations

30 specific questions



0 = There are no regulations

1 = Regulations with major weaknesses

2 = Regulations with some weaknesses or gaps

3 = Regulations provide an excellent basis for management



Reporting Progress at Protected Area Sites: Data Sheet

Name of protected area		Boumba Bek (BB) National Park (proposed)	
Location of protected area (country, ecoregion, and if possible map reference)		Cameroon, Western Congo Basin Moist Forest Eco-region 2° 58 and 2° 24N and 14° 40 and 15° 18E	
Date of establishment (distinguish between agreed and gazetted*)		Agreed 1996	Gazettement pending
Ownership details (i.e. owner, tenure rights etc)		State owned land and managed under the permanent estate regime	
Management Authority		Government Wildlife and Protected Areas Authority	
Size of protected area (ha)		238,260	
Number of staff		Permanent 2(Gov't) and 6 (WWF staff)	Temporary 8 temporary game guards
Annual budget (US\$)		120,000	
Designations (IUCN category, World Heritage, Ramsar etc)		Category 6 being proposed	
Reasons for designation		Extremely rich in wildlife, timber and other NTFPs. Local communities include indigenous forest people, Baka pygmies	
Brief details of World Bank funded project or projects in PA		Boumba Bek between 1997 and 2001 benefited from GEF funds amounting to about US\$500,000 targeting basic research	
Brief details of WWF funded project or projects in PA		WWF has been involved in the region since 1987 but had a management role since 1997 with management of GEF funds and also invested more than US\$600,000 over the past 5years to establish management infrastructure, monitoring programme etc	
Brief details of other relevant projects in PA		Capacity building of local communities in management of community hunting zones and also establishment of consultative forums between stakeholders notably sport and logging companies. Boumba Bek proposed NP forms a continuous forest block with Nki proposed NP. Nki is part of a trans-boundary conservation initiative comprising PAs in Cameroon (Dja biosphere reserve), Congo-Brazzaville (Odzala NP) and Minkebe in Gabon. WWF is also working with various logging companies operating in the region on SFM-C	
List the two primary protected area objectives			
Objective 1	Ecological integrity of the forest is maintained by enhancing sustainable natural resource exploitation and management		
Objective 2	Local communities directly benefit in a participatory management process by regulated access to resources and accrued benefits from commercial exploitation of surrounding multiple used zones		
List the top two most important threats to the PA (and indicate reasons why these were chosen)			
Threat 1	Unsustainable timber exploitation activities		
Threat 2	Poaching		
List top two critical management activities			
Activity 1	Working with local communities and other stakeholders to establish sustainable exploitation and management practices		
Activity 2	Law enforcement and control		

The 30 questions

Question

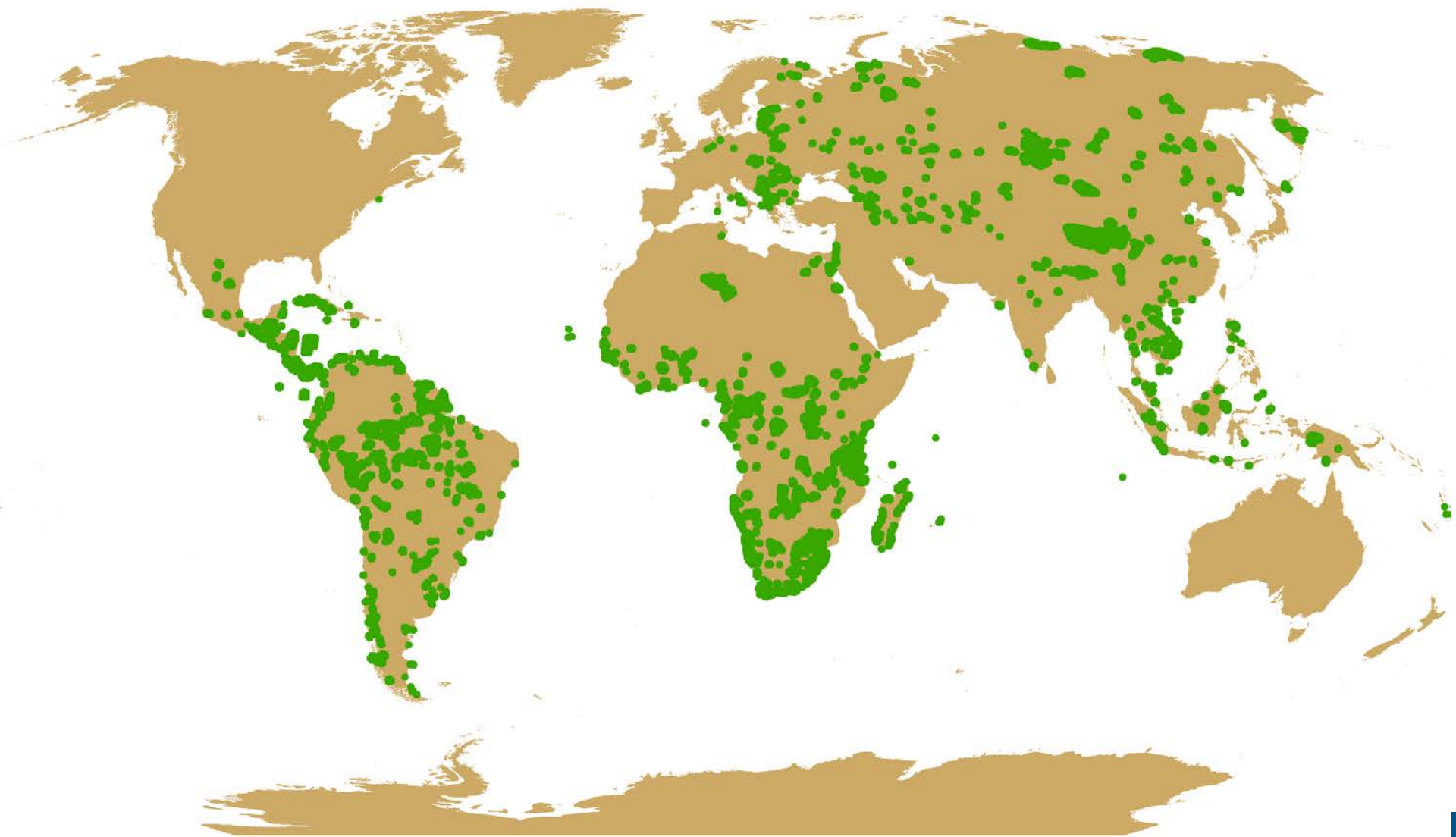
- 1 Legal status
 - 2 Protected area regulations
 - 3 Law enforcement
 - 4 Protected area objectives
 - 5 Protected area design
 - 6 Protected area boundary
 - 7 Management plan
 - 8 Regular work plan
 - 9 Resource inventory
 - 10 Research
 - 11 Resource management
 - 12 Staff numbers
 - 13 Personal management
 - 14 Staff training
 - 15 Current budget
-



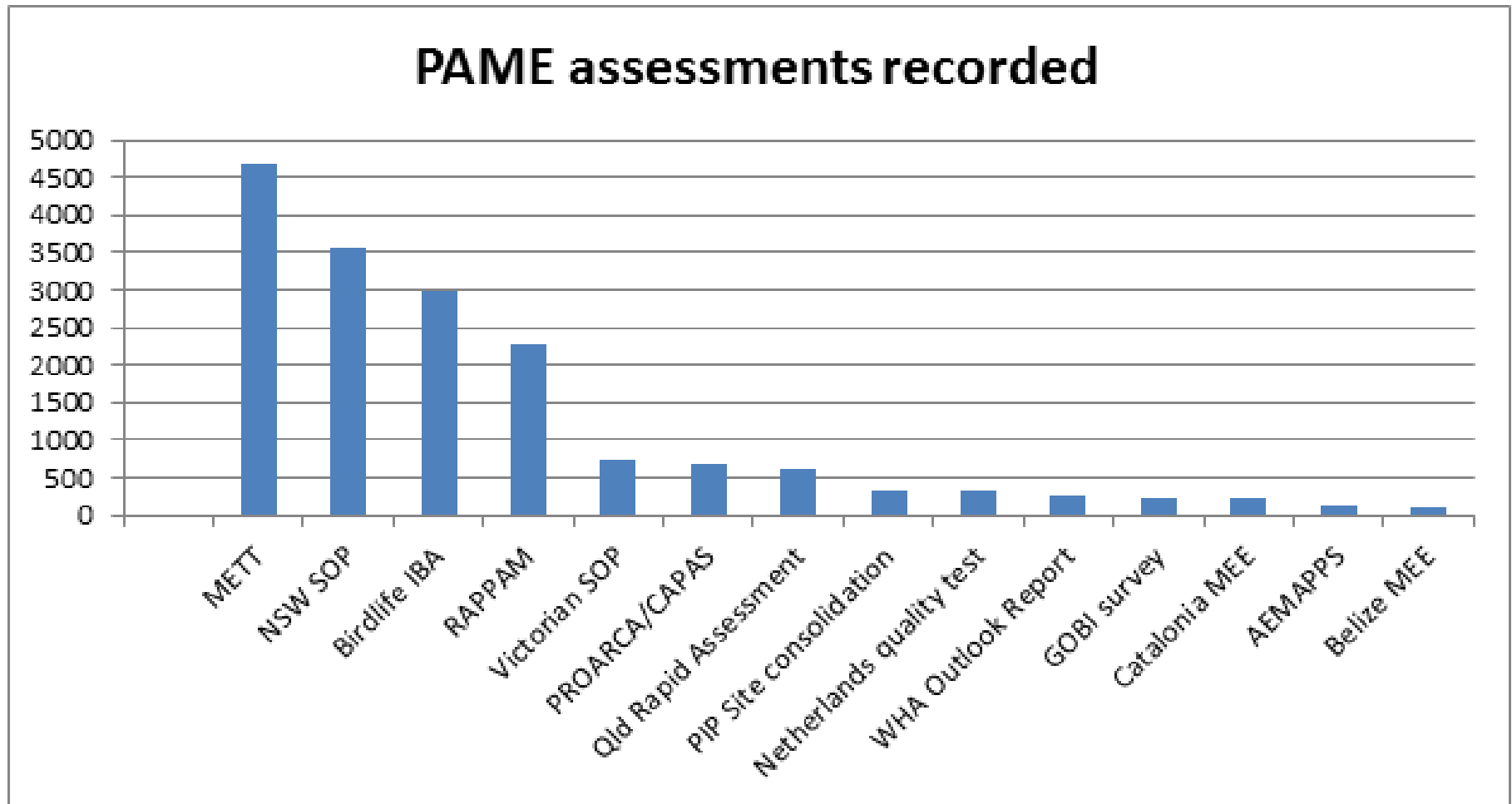
Question

- 16 Security of budget
 - 17 Management of budget
 - 18 Equipment
 - 19 Maintenance of equipment
 - 20 Education program
 - 21 State and comm. Neighbors
 - 22 Indigenous people
 - 23 Local communities
 - 24 Visitor facilities
 - 25 Commercial tourism
 - 26 Fees
 - 27 Condition assessment
 - 28 Access assessment
 - 29 Economic benefit assessment
 - 30 Monitoring and evaluation**
-

METT sites (n= 1,634 with 4,136 assessments)



Application to worlds PA estate?



What does it not do?

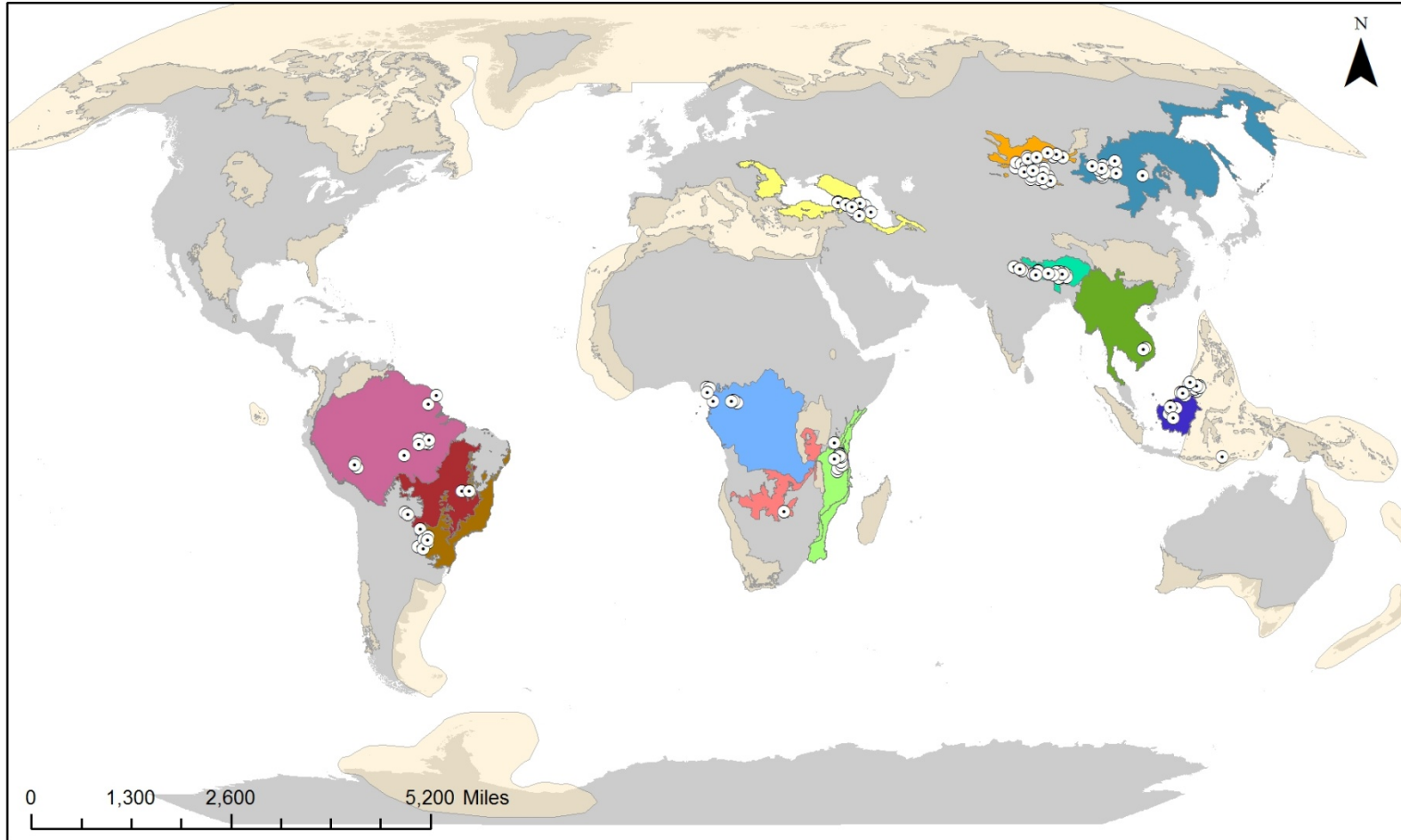
- Tell us the status of habitats / trends
- Tell us populations of species / trends
- Tell us social well-being of communities and trends
- Tell us about governance and power relations in the PA

The way forward?

- Is there a need to re-develop?
- Cover social and biological outcomes
- Add climate change?
- Or keep it as a management tracking tool and no more

WWF example of application

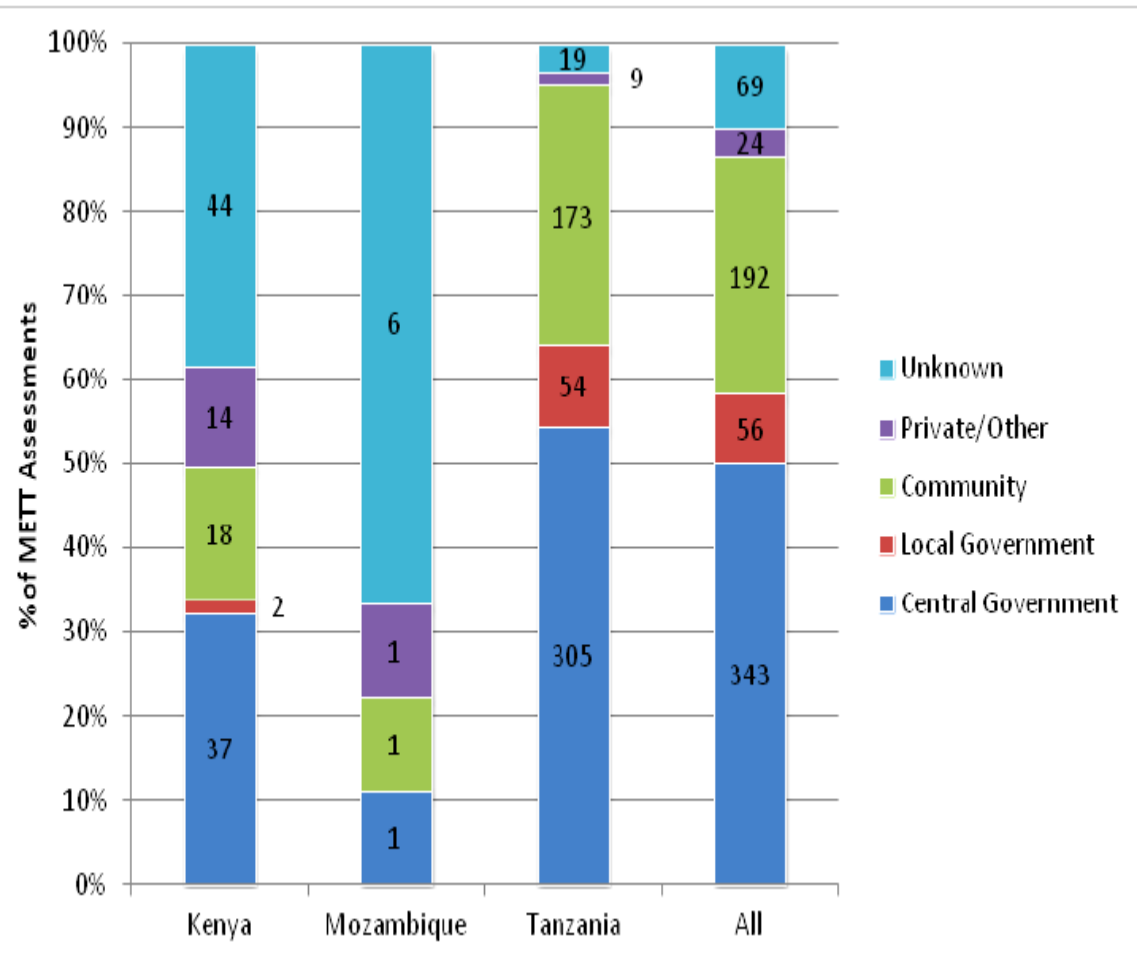
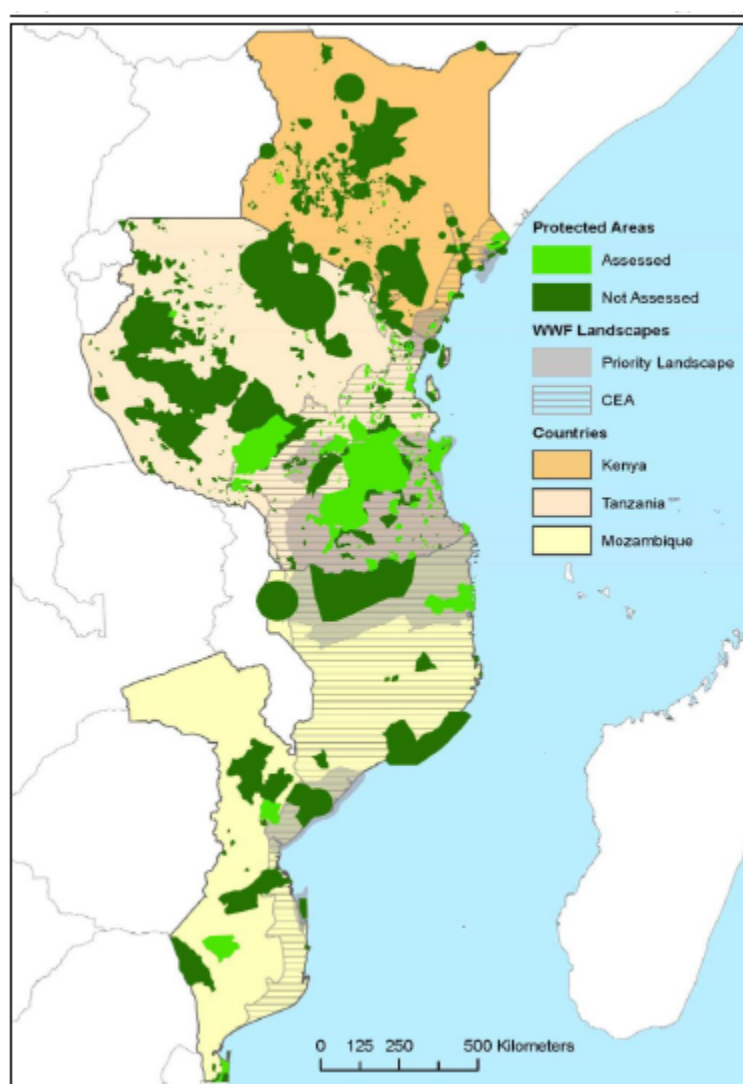
The Location of WWF Sites within 12 Global Priority Places



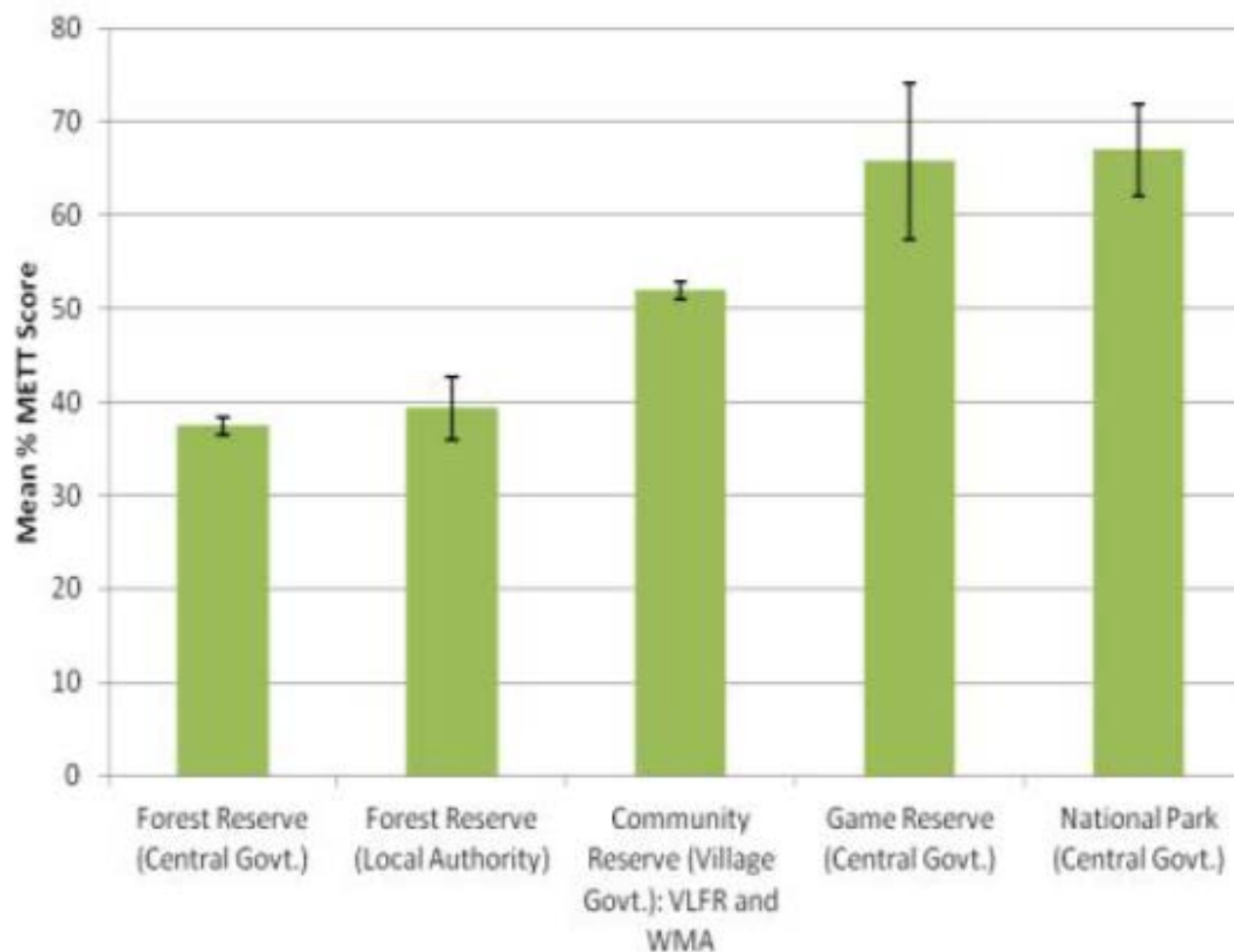
WWF Global Priority Places



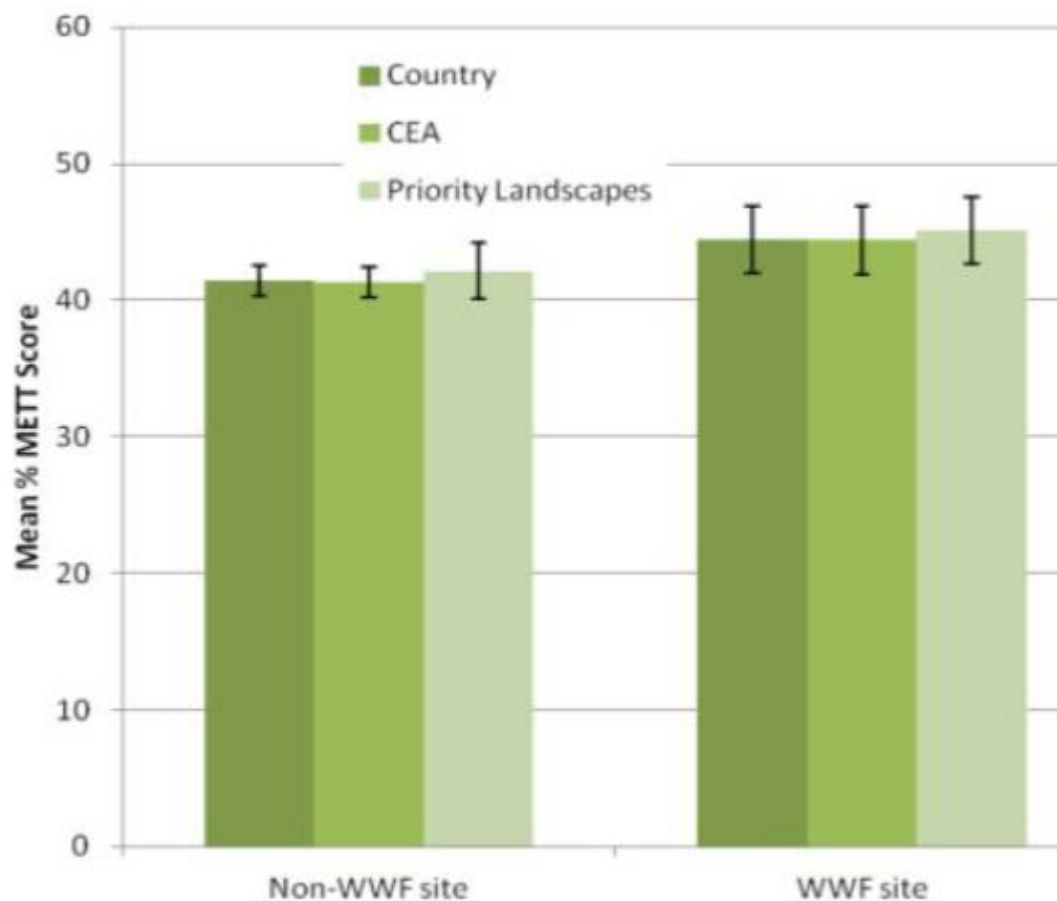
Coverage of different kinds of reserves in Eastern Africa



Types of Reserves and their scores in Tanzania



WWF and non-WWF sites



Conclusions

- METT tool widely used
- METT tool being used to track Aichi Target 11
- Starting to be used for tracking the impact of protected areas
- A basis to build on.....