

An aerial photograph of a lush green landscape. A winding river flows through a vast, flat, green area, likely a wetland or floodplain. The river is surrounded by dense, dark green forest. In the background, there are more green fields and a few small structures. The sky is overcast with grey clouds.

Sarawak Towards Effective Management of Protected Areas

World Park Congress, Sydney
12-19 November, 2014

Fadzilawati Zahrah Hamdan (WWF-Malaysia)
Francis Gombek (Sarawak Forestry Corporation)



Outline

- Background: Sarawak
- PA Governance, Gazettement and Trend
- Evaluating Effectiveness (METT) & Findings
- Building Capacity of PA staff
- Next Step

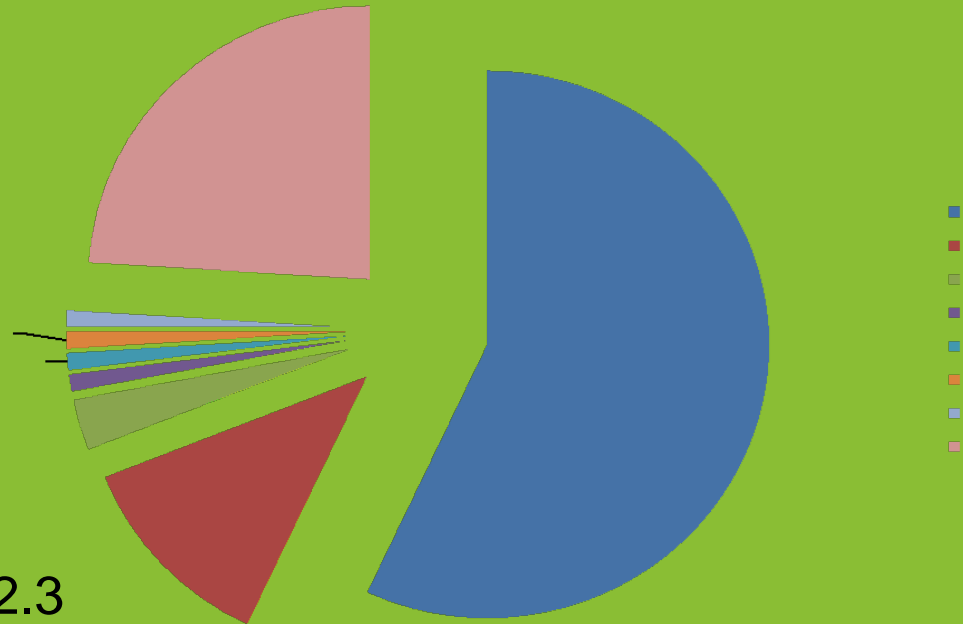


Background: Sarawak

Sarawak is one of the 13 states in Federation of Malaysia, Northwestern part of Borneo.

Source: Sarawak Forestry Department

Forest Type of Sarawak (2001)

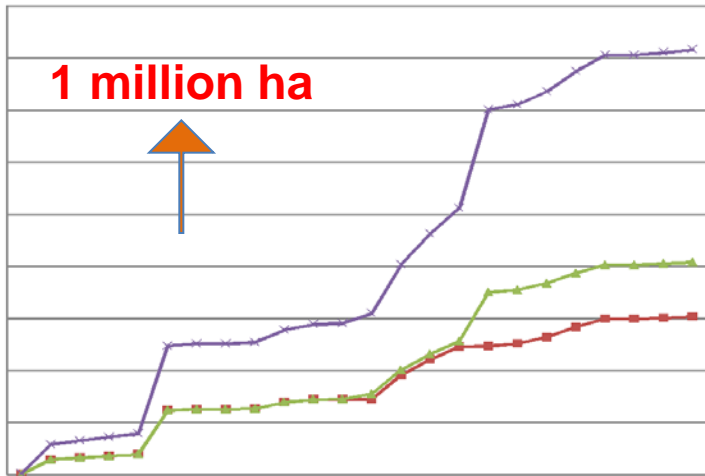


Approximately 12.3 million hectares (37.52% of Malaysia) About Forest Cover: 8.22 million (67%) hectares

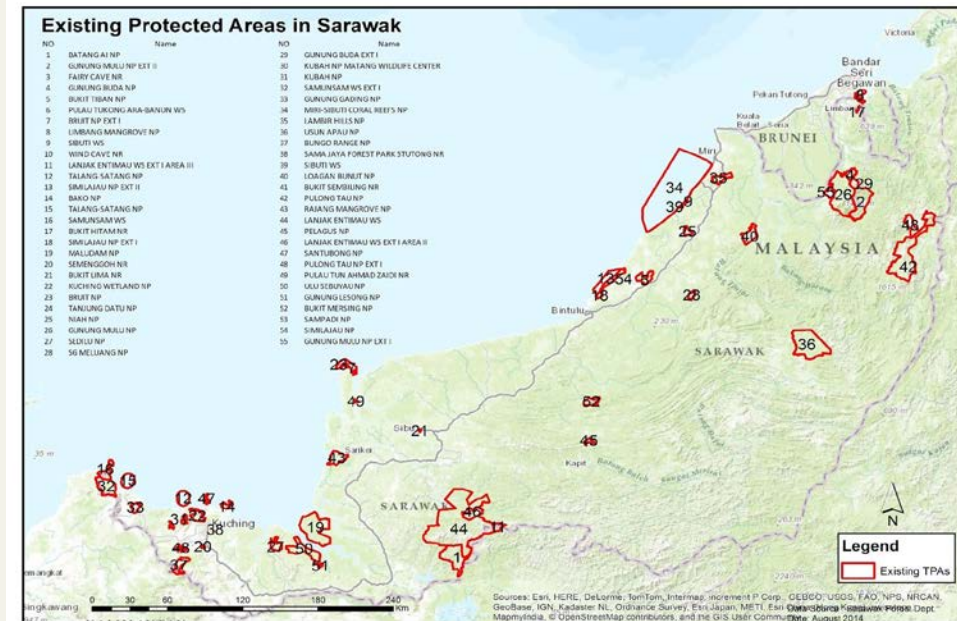
4.08 million hectares: settlements, townships, agricultural crop cultivation, and native customary rights land

PA Governance, Gazettement and Trend

Gazettement Trend of Protected Areas (IUCN Category I and II) in Sarawak



In 1957, Bako National park was the first protected area gazette in Sarawak with the result of National Parks Ordinance 1956.



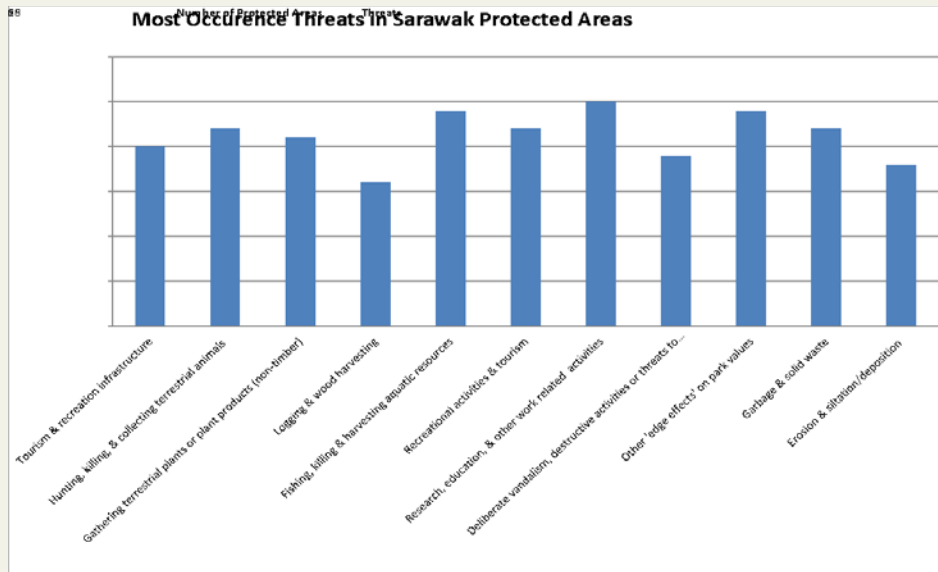
Summary	Land Area (ha)	Territorial Water (ha)	Total Area (ha)
National park	393,674.00	229,789.00	623,463.00
Nature Reserve	1,767.30	0.00	1,767.30
Wild Life Sanctuary	206,460.40	0.00	206,460.40
Total area	601,901.70	229,789.00	831,690.70

Evaluating Effectiveness (METT) & Findings

- 29 TPAs assessed
- Including 1 private management company and 1 wildlife rehabilitation center
- 7 focal person in Sarawak Forestry Corporation (SFC) identified to monitor the implementation of METT recommendation and re-assessment of METT

Management indicators average scores (%)

Description	Optimum Score	No of PAs	Score
Very poor management effectiveness	<25%	1	22.62%
Poor management effectiveness	25% - 50%	4	42.14%
Moderate management effectiveness	51% - 75%	20	66.40%
Satisfactory / Good management effectiveness	76% - 100%	4	78.83%



ELEMENT	ELEMENT SCORE
Context	2.97
Planning	1.94
Inputs	1.61
Processes	1.68
Outputs	1.62
Outcomes	2.11
Planning/Outputs	1.97
Process/Outcomes	1.83
Inputs/Process	1.36

Evaluating Effectiveness (METT) & Findings

Frequent Strength Indicated in Sarawak Protected Areas	Frequent Weaknesses/Gaps Indicated in Sarawak Protected Areas
Legal status	Staff numbers
Protected area boundary demarcation	Commercial tourism operators
Condition of values	Current budget
Regular work plan	Education and awareness
	State and commercial neighbours
	Equipment
	Indigenous people
	Local communities
	Fees
	Management plan





Building Capacity of PA staff

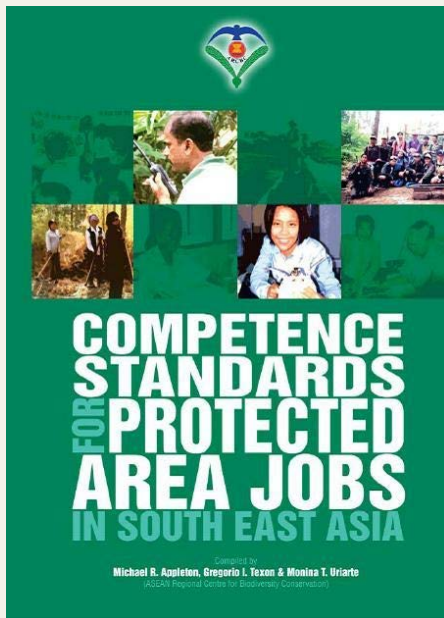
Capacity gaps assessment

Compile data (HR) –
Asses capacity & status
- Identify & analyse
gaps –Identify options &
priorities

Summary of Capacity Gaps Identified:

- Average number of staff identified, arranged by category and levels

Category (<i>alphabetical order</i>)	Level 1	Level 2	Level 3	Level 4	Level 5
Awareness Education and Public Relations	36	20	6	8	
Conservation Management of Ecosystems, Habitat and Species	15	29	20	7	
Enforcement	38	47	24	13	
Field Craft	51	52	42		
Natural Resources Assessment	74	66	36	16	
Protected Areas Policy, Planning and Management			29	26	2
Recreation and Tourism		0	20	8	
Site Management	33	26	30	8	
Socio-Economic & Cultural Assessment		2	22	10	
Sustainable Development and Communities		26	23	10	



- Supporting the development of National Capacity Building Programme under UNDP-GEF PA Financing Project
- Implementation of recommendations for current available training programmes for staff

1. Strengthening management Effectiveness

- Enhance multi-stakeholder participation towards effective protected areas management

[Government sectors, private companies (oil palm & concessions) as well as local community Empowering their participation in enhancing PAs management though conflict consultation and resolution]

- Building capacity of protected areas staff
- Engage and empower community in protection and conservation of biodiversity
- Enhance quality of surrounding areas and ensure connectivity through best management practices and HCVs

2. Fulfilling state goal in achieving 1 million ha

- Vegetation mapping; prioritising areas



Thank you
