



IUCN  
WORLD PARKS  
CONGRESS  
SYDNEY 2014

*Parks, people, planet:  
inspiring solutions*

## **GALAPAGOS PROTECTED AREAS MANAGEMENT PLAN**

A Natural Heritage Integrated tool protecting marine and terrestrial ecosystems

Arturo Izurieta, Monica Calvopiña, Sandra Chamorro, Danny Rueda, Washington Tapia



Ministerio  
del **Ambiente**



Parque Nacional  
**GALÁPAGOS**  
Ecuador



AREAS  
PROTEGIDAS  
POR TI.

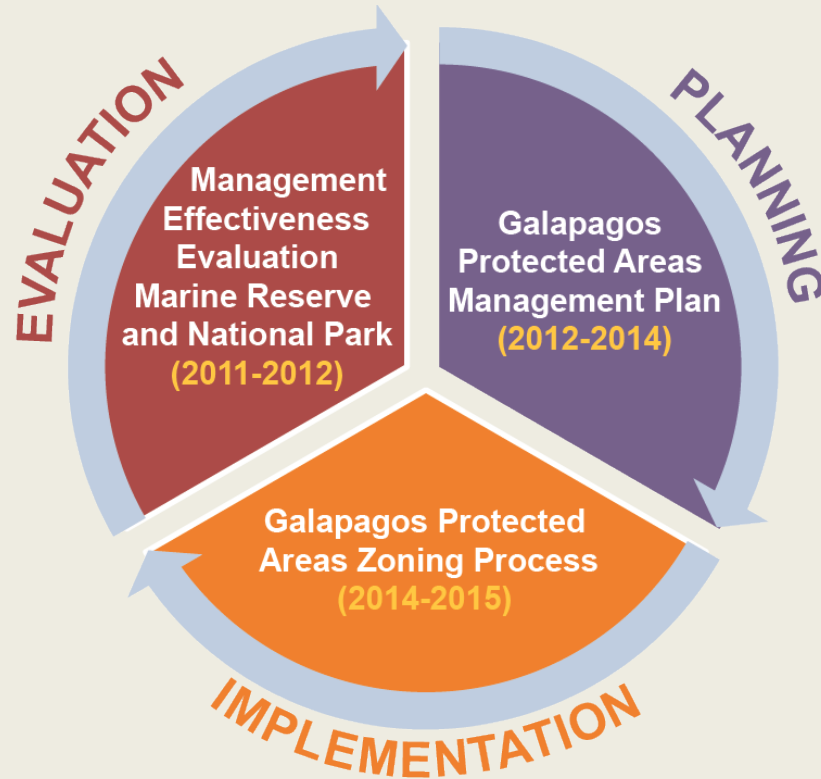


**WWF**  
wwf.org.ec

# Galapagos Protected Areas Management Plan

COMMUNICATION AND PARTICIPATION

INFORMATION DELIVERY



Galápagos  
a social- ecosystem

*Protected areas integration  
with urban and rural areas*

Environmental Services

Well being

Environmental limits

Land Management

# Galapagos National Park Achievements

- A methodology based on processes and a timeline to develop a management plan which **integrates both protected areas**.
- **The creation of a Technical Group** for the process with different levels of participation.
- **Integration workshops** for rangers in different islands.
- **Capacity building** for the National Park administrators and rangers

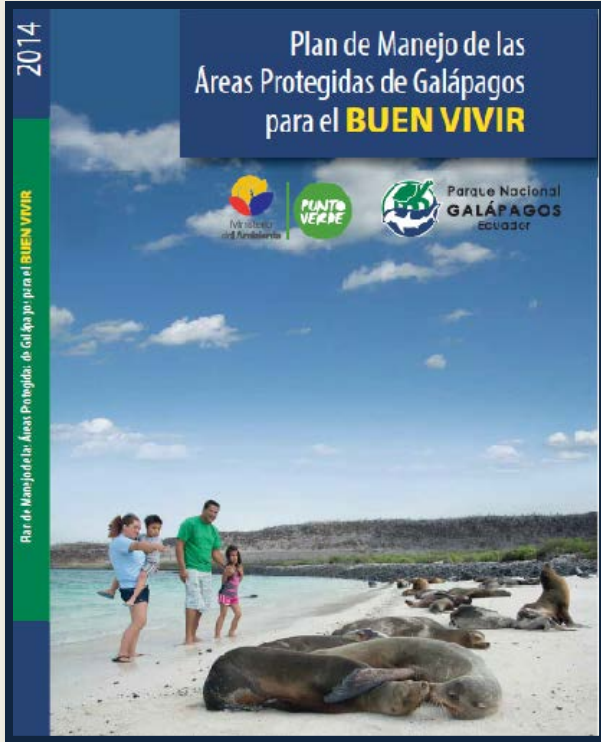


# Achievements of the process

- **Core decision makers group** creation and support of their members during the process.
- **Institutional commitments** and agreements.
- **Consensus** of objectives, management programs and land model use strategies.
- **Management Plan presentation** and approval at Ministerial level (July 2014).



# Management Plan Objectives



[Acces the complete Plan here!](#)



1. Ecosystems and biodiversity **conservation**

2. **Implementation**, incorporating **land management** conservation policies

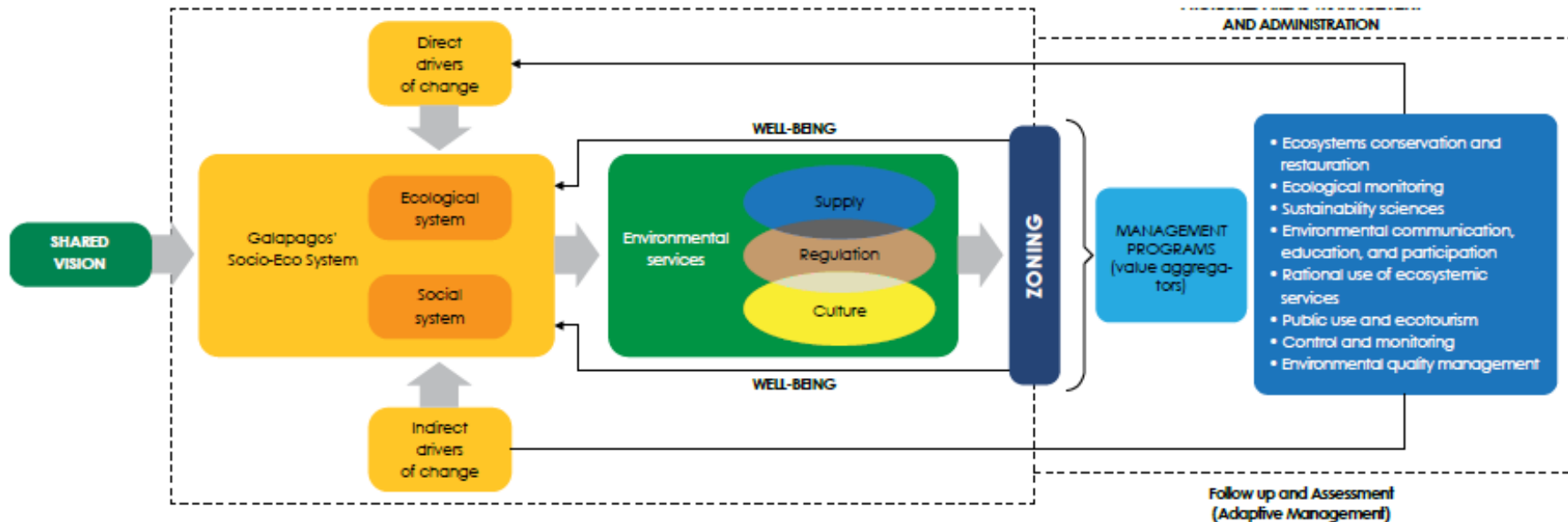
3. Improved and consolidated **management capacity** for the Directorate of the Galapagos National Park.

4. Promote **participatory** and inclusive social processes

5. Improved **technical and scientific knowledge** applied to management.

6. Promote national and international **cooperation**

# Management Planning Overview



# An inspiring solution?



## Innovative and effective

- This tool supports **land management strategies** for the Galapagos Province: Integrating Protected Marine and Terrestrial Areas. Promoting its connexion with all the territory as a whole, including urban and rural areas.

## Evidence of implementation and impact

- The Directorate of the Galapagos National Park **implemented this tool at different scales of planning: Strategic Plan, Operative Plan, Monitoring Plan, Financial Sustainability Strategy.**
- The **rezoning process of the Galapagos Protected Areas is under revision for its implementation** following the Management recommendations.

## Applied elsewhere or more broadly

- This **plan can be a support and innovative tool** to other areas because it integrates as a conceptual structure, protected areas strategies with ecosystems services.

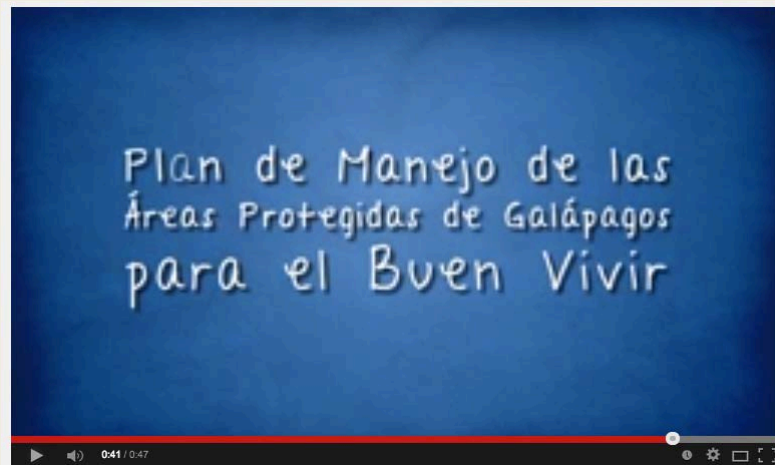
# What makes it work?

## Components that lead to success

- Political compromise, administrative and technical capacity of park rangers.
- Validation process from all the main regional and national government institutions through an agreement.
- Effective cooperation from WWF as an advisor of the process.

## Enabling factors

- Institutional strengthening
- Inter-institutional coordination and cooperation
- Integrated planning
- Financial sustainability
- Global understanding



[Click on the picture to access video!](#)