



# Palau Protected Areas Network Fund Sustainable Finance Mechanism



**2014 World Parks Congress**

**17th November 2014**

Melwert Kikuo

Fiscal Officer

Protected Areas Network Fund

Email: [mkikuo@palaupanfund.org](mailto:mkikuo@palaupanfund.org)

Website: [www.palaupanfund.org](http://www.palaupanfund.org)



# Palau: Basic Stats



- ✓ Location: Oceania  
Comprises of 300 group of islands in the North Pacific Ocean, SW of Philippines
- ✓ Total Land Area: 459 km<sup>2</sup>
- ✓ Population: 21,108
- ✓ Primary Industry: Tourism
- ✓ Avg Per Capital Income: \$8,000.00
- ✓ Environment Issues:
  - Inadequate Facilities for Solid Waste Disposal
  - Threats to Marine Ecosystem: Coral and Sand Dredging, Illegal fishing, Overfishing  
Climate change, Sea-level rise

Source: The World Factbook at [www.cia.gov](http://www.cia.gov)





# PANF - Incorporation



Ministry of Finance (MOF)



Ministry of Natural Resource,  
Environment, & Tourism  
(MNRET)



The Nature Conservancy



Conservation International



LEGISLATIVE MANDATES

**RPPL 6-39**

- Issued 11/26/03
- Established PAN Act

**RPPL 7-42**

- Issued 5/08/08
- Established PAN-Fund
- A non-profit corp. to manage, invest, fundraise & disburse funds to PAN



# PANF - Composition/Governance

## ❖ **Legislative Mandate**

- 9-Member Board of Directors
- Be > 50% from private entities
- Be > 50% Palauan citizens
- Staggering 3-year terms
- Incorporators + donor community

## ❖ **Pool of expertise**

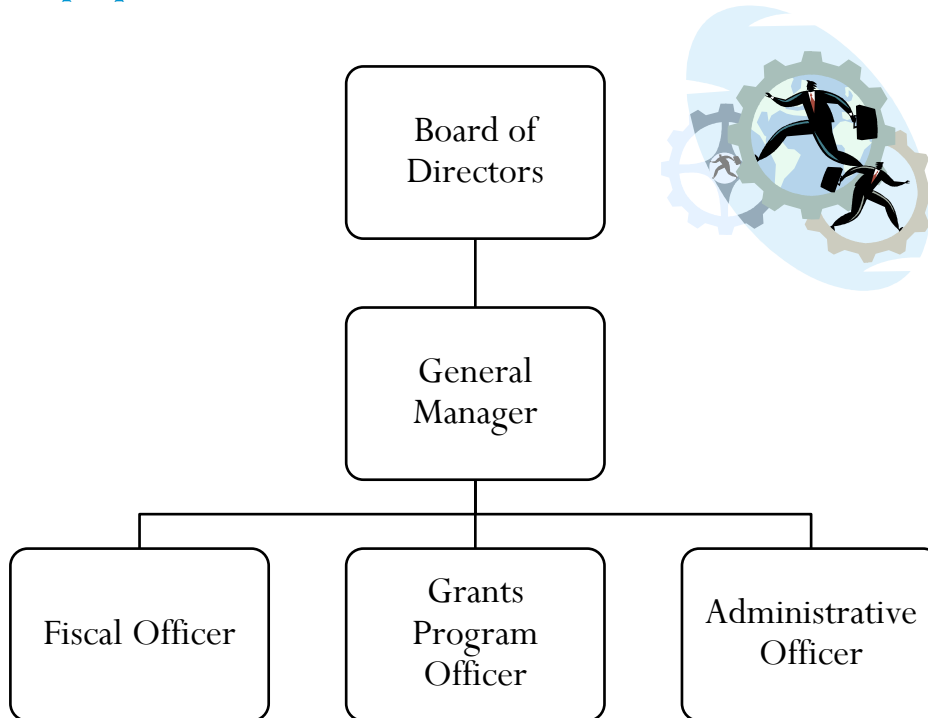
- Conservation planning, science, and/or management; education
- Community-based driven conservation; financial mgmt
- Expertise in private or non-profit sector and business community;
- Project management, development, and operations experience.

## ❖ **Board of Directors**

1. Mr. Reagan Belechl, Chairman
2. Mr. Kevin Chin, Vice Chairman
3. Mr. Joe Tutii Chilton, Treasurer
4. Ms. Mingrang Kloulechad, Secretary
5. Ms. Vameline Singeo, Member
6. Minister Elbuchel Sadang, Member
7. Minister Umiich Sengebau, Member
8. Steven Victor, Member TNC Rep.
9. Conservation Int'l, Member (TBD)



# PANF – Composition / Governance



## PAN Historical Timeline

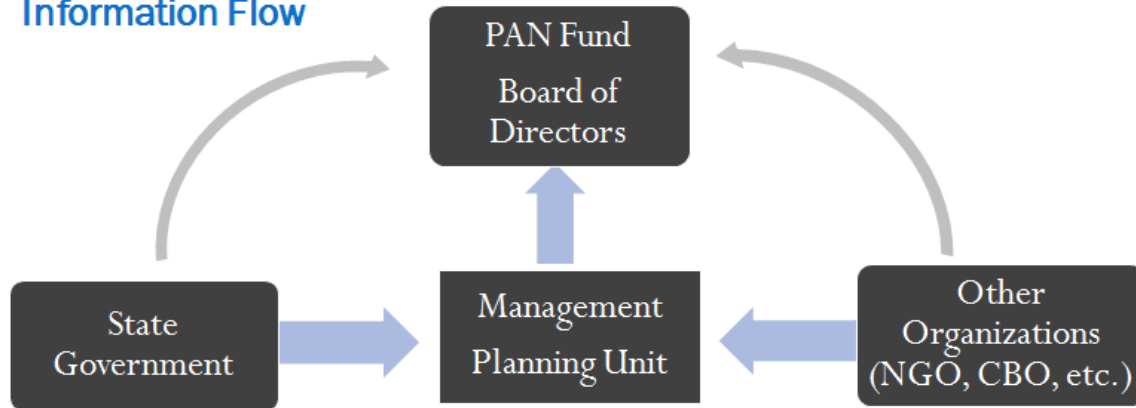
- 2003 – RPPL 6-39: Established PAN Act & Green Fee
  - 2008 – RPPL 7-42: Created PAN Fund
  - 2010 – Implementation of Green Fee revenues
  - 2010 – PAN Fund Incorporation & Chartered
  - 2011 – PAN Fund Board of Directors formalized
  - 2012 – PAN Fund Office mobilized operation
- ~ March 2012: PAN Fund officially launched operations.

**Mission:** To efficiently and equitably provide funding to the Protected Areas Network and its associated activities, through strategic actions and medium-to-long term financial support that will advance effective management and conservation of Palau's natural and cultural resources.

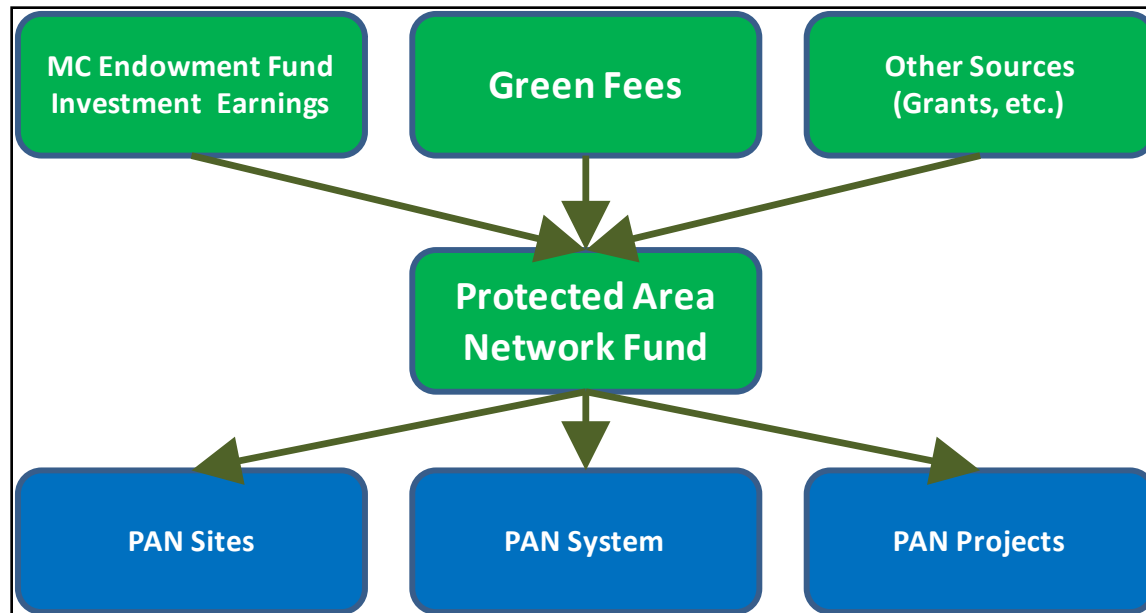


# PAN Fund Process

## Information Flow

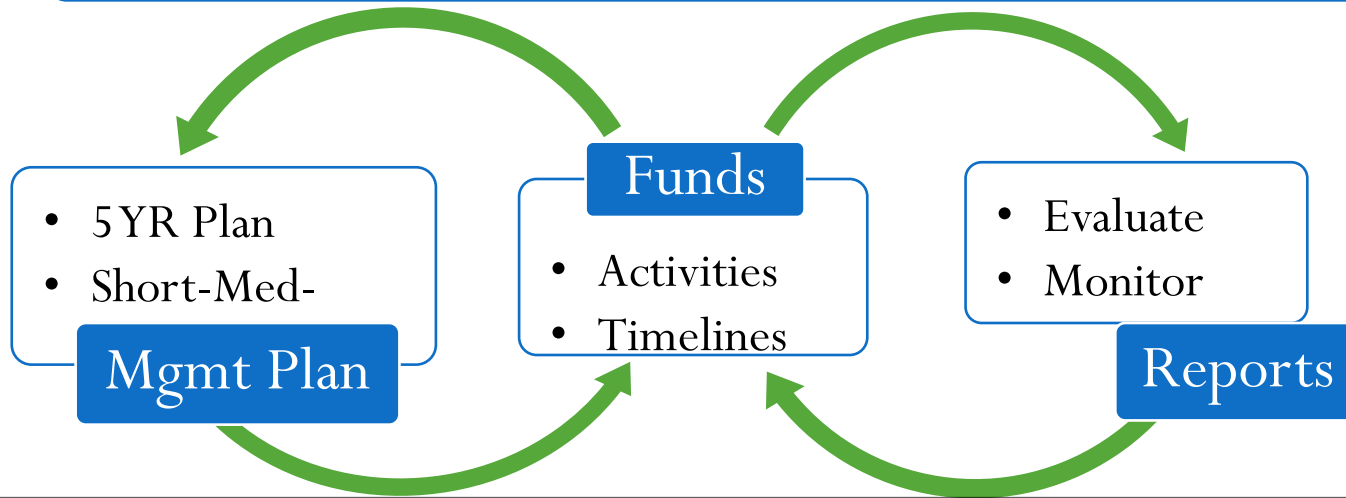


## Financial Flow





# PAN Funding/Monitoring Process



## ❖ PAN States/Sites

- FY 2012: 9 Members @ \$1.1M total budget
- FY 2013: 4 New States/PAN Members
- FY 2014: 3 Inclusion of remaining states: Ngatpang, Angaur, & Sonsorol

## ❖ Conservation Management Plans

- Budget, Objectives, & Activities
- Incorporates objective for income generation
  - ~ Examples: Entrance fees for bird watching, diving, and/or nature hikes

## ❖ Progress Disbursements

- Require Progress Reports - Quarterly & Annually
- Quarterly Disbursements - REQUIRED
  - ~ Flexible schedule to be early- Based on progress performance





# Way Forward

**PANF**

- Capacity Building
- Financial and technical support
- Capitalize PAN's Endowment Fund
- Honest Brokers to help the Environment, and the Communities – the Palauan People.
- Professional Network



Kom Kmal Mesulang! Thank you!!

Home of Rare & Threatened Species





# Kom Kmal Mesulang! Thank you!

## People & Livelihoods



# Q & A

Kom Kmal Mesulang – Thank you!

## PAN Fund & PAN Office Sustainable Finance Mechanism

