



IUCN
WORLD PARKS
CONGRESS
SYDNEY 2014

*Parks, people, planet:
inspiring solutions*

Privately Protected Areas to save species

**Introducing the IUCN NL
Small grants for the Purchase of Nature program**

Rob Glastra / Marc Hoogeslag

IUCN NL (National Committee of the Netherlands)



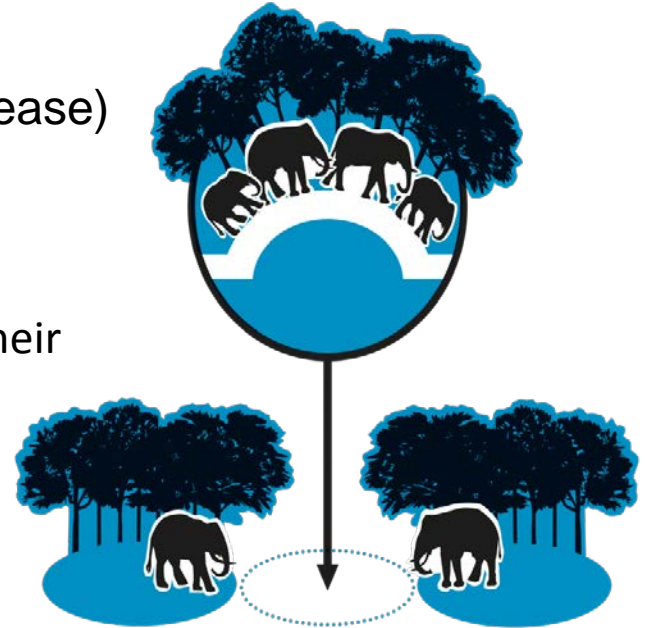
World's second-largest
private charity donor

Overview presentation

Conservation on private land is needed.

Our solution:

- Provide funding for the acquisition (purchase or lease) of strategically important lands (SPN window)
- Place the ownership and management responsibility in the hands of local NGOs, dedicated to protecting their local heritage (*privately protected areas*)



SPN criteria

Selection criteria

ORGANIZATION

Eligible for (local) NGOs in Latin America, Africa and Asia, with proven capacity in natural resource management.

LAND / ECOLOGY

Priority is given to purchase or lease of areas that:

- Have an **outstanding biodiversity** value, like IBA, EBA or **AZE** sites
- Include threatened ecosystems and/or **Red List** species (EN/CR)
- Ecosystem **underrepresented** in PA system
- Areas with a **strategic importance** for creating **connectivity** in landscapes.

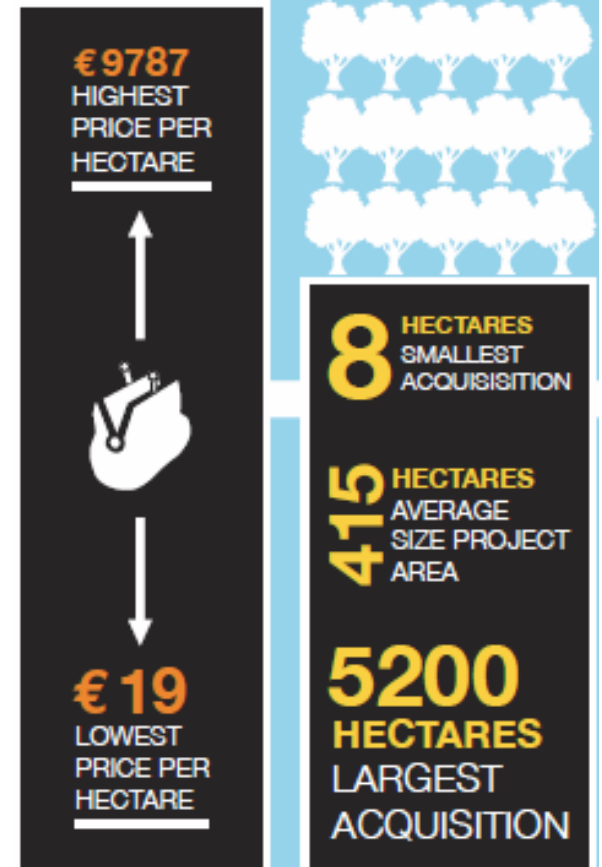
Annual deadline on May 1st

SPN Facts

- Initiated in 2001, funded by Dutch Postcode Lottery (annual budget euro 450,000)
- Globally unique: only **open funds window** to enable conservation NGOs to acquire (purchase or lease) land for conservation purposes
- 106 projects from 62 NGOs in 27 countries, over 80.000 ha secured by the end of 2014
- **Innovative pioneer** in countries where land acquisition for conservation is uncommon like Myanmar, Iran, Armenia.
- Over 120 requests annually; 5-10% of funding requests granted.



World's second-largest private charity donor



SPN and Endangered species

Birds

Long-whiskered Owlet (*Xenoglaux loweryi* - EN) : ECOAN, Peru **AZE**

Sharpe's Longclaw (*Hemimacronyx sharpei*- EN) : Nature Kenya, Kenya

Fuerte's Parrot (*Hapalopsittaca fuertesi* - CR) : ProAves, Colombia **AZE**

Munchique wood-wren (*Henicorhina negreti* – CR): Fundación Colibri, Colombia

*Dusky Starfrontlet (*Coeligena orina* – CR): Fundación Colibri, Colombia

Blue throated macaw (*Ara glaucogularis* – CR) : Fundacion Armonia, Bolivia

Maleo (*Macrocephalon maleo* – EN) : ALTo, Indonesia



Mammals

Cotton top tamarin(*Saguinus oedipus* - CR) : Fundacion Proyecto Titi, Colombia

San Martín Titi (*Callicebus oenanthe* – CR) : AMPA, Peru

Golden Lion Tamarin (*Leontopithecus rosalia* - EN) : AMLD, Brazil

Blonde capuchin monkey (*Cebus flavius* – CR) : INSPIRA, Brazil

Persian leopard (Panthera pardus ssp. Saxicolor - EN) : FPWC, Armenia

* Asiatic cheetah (*Acinonyx jubatus* ssp. venaticus – CR) : ICS, Iran

Amphibians

Ranitomeya tolimensis (EN) – ProAves, Colombia



Case: Peru

Problem

- Deforestation , Fragmentation

Intervention

- Support ECOAN to expand the Abra Patricia reserve (AZE site). SPN provided grants for acquisition of 200 hectares of forest, prime habitat for Long-whiskered Owlet a.o.

Result

- strategically located plots could be acquired, mainly close to access roads to form a buffer against encroachment
- Abra Patricia stronghold for many endemic and endangered species, like Long-whiskered Owlet

(picture: Dubi Shapiro)



Case: Colombia

Problem

- Highly fragmented forest, unprotected, subject to clearance for agriculture

Intervention

Acquisition by ProAves of 119 hectares, to create an amphibian reserve in the Central Cordillera of Colombia.

Result

Creation of the Ranita Dorada Amphibian Reserve. Home to a large diversity of endangered amphibians, including Swainson's Poison Frog (*Ranitomeya doriswainsonae*), and the Little Golden Poison Frog (*Ranitomeya tolimense*)



Additional impact of small PPAs

- creates connectivity in fragmented landscapes that strengthens ecological network
- can be critical footholds to the survival of certain species
- secures local ecosystem services with broader effect
- can act as conservation footholds within stakeholder community at landscape level



Success factors

- Location, Commitment and Patience -

- ✓ Clear analysis of **where** a private reserve has the biggest impact.
- ✓ Permanent presence of conservation NGO with management capacity, **commitment** to the area and its inhabitants, **trusted** by local communities.
- ✓ For the donor: practical experience, a global network of partners & experts and a flexible, **patient** approach to complex acquisition projects with local partners.

Partners' passion

