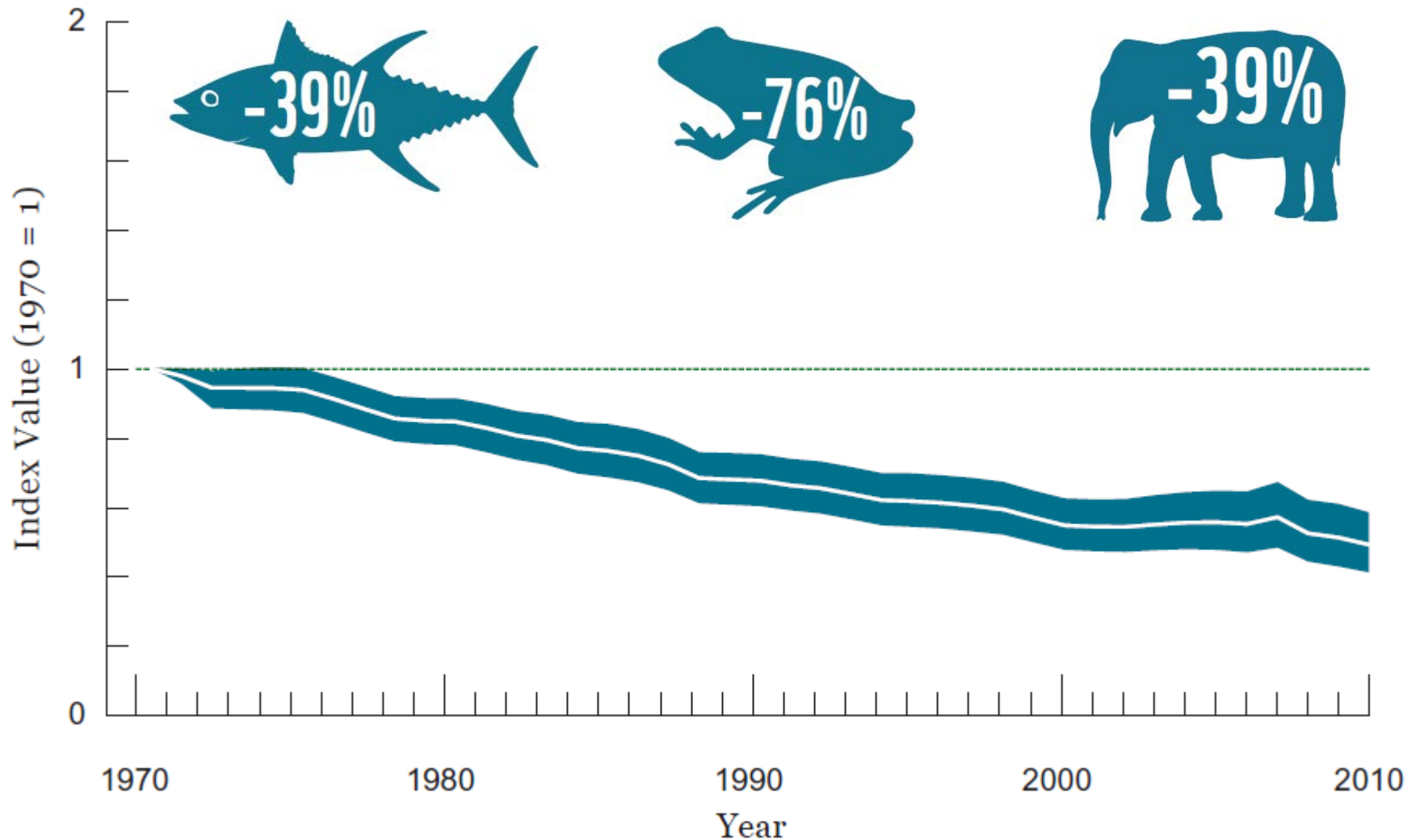


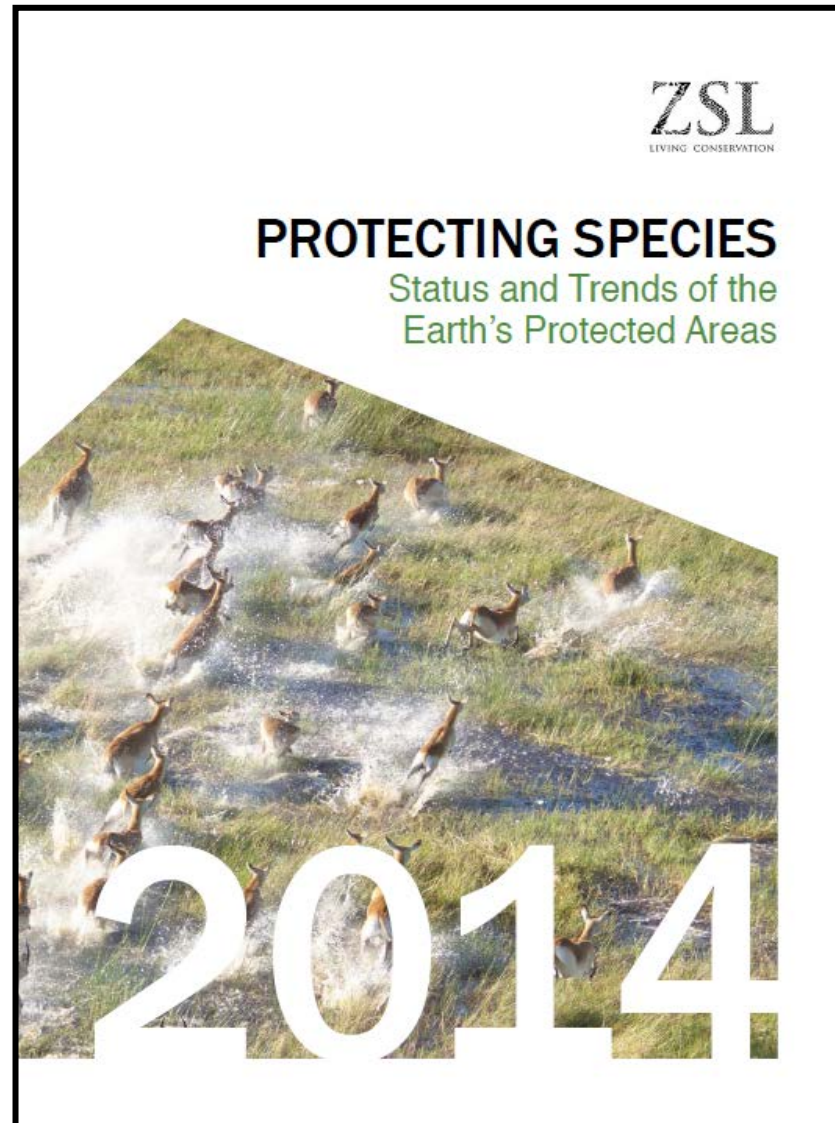
The future of PA monitoring

Jonathan Baillie, Zoological Society of London

Species population trends

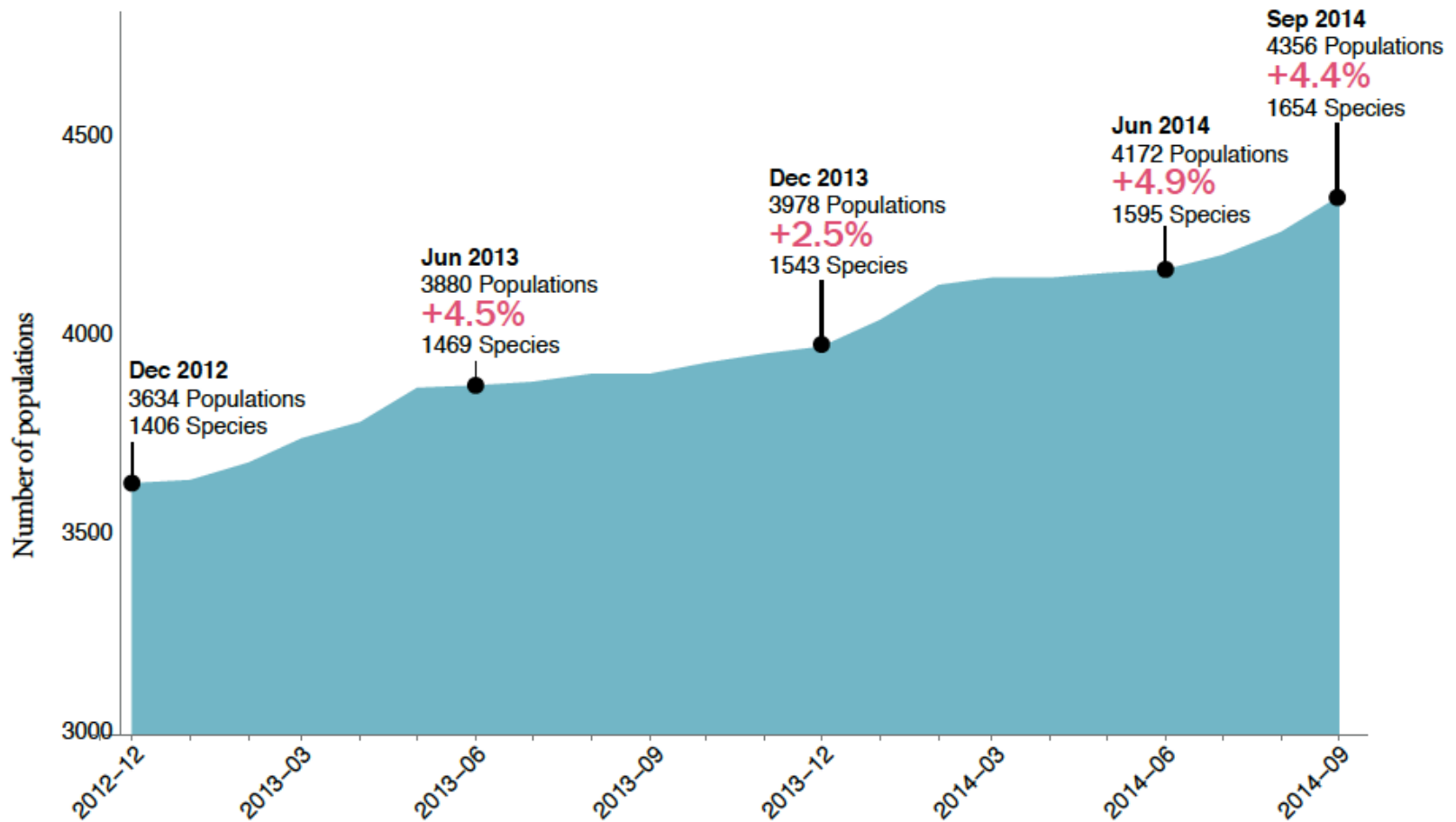


Are protected areas working?



LPI data

Growth of Living Planet Database for protected areas since Dec 2012.



Dataset

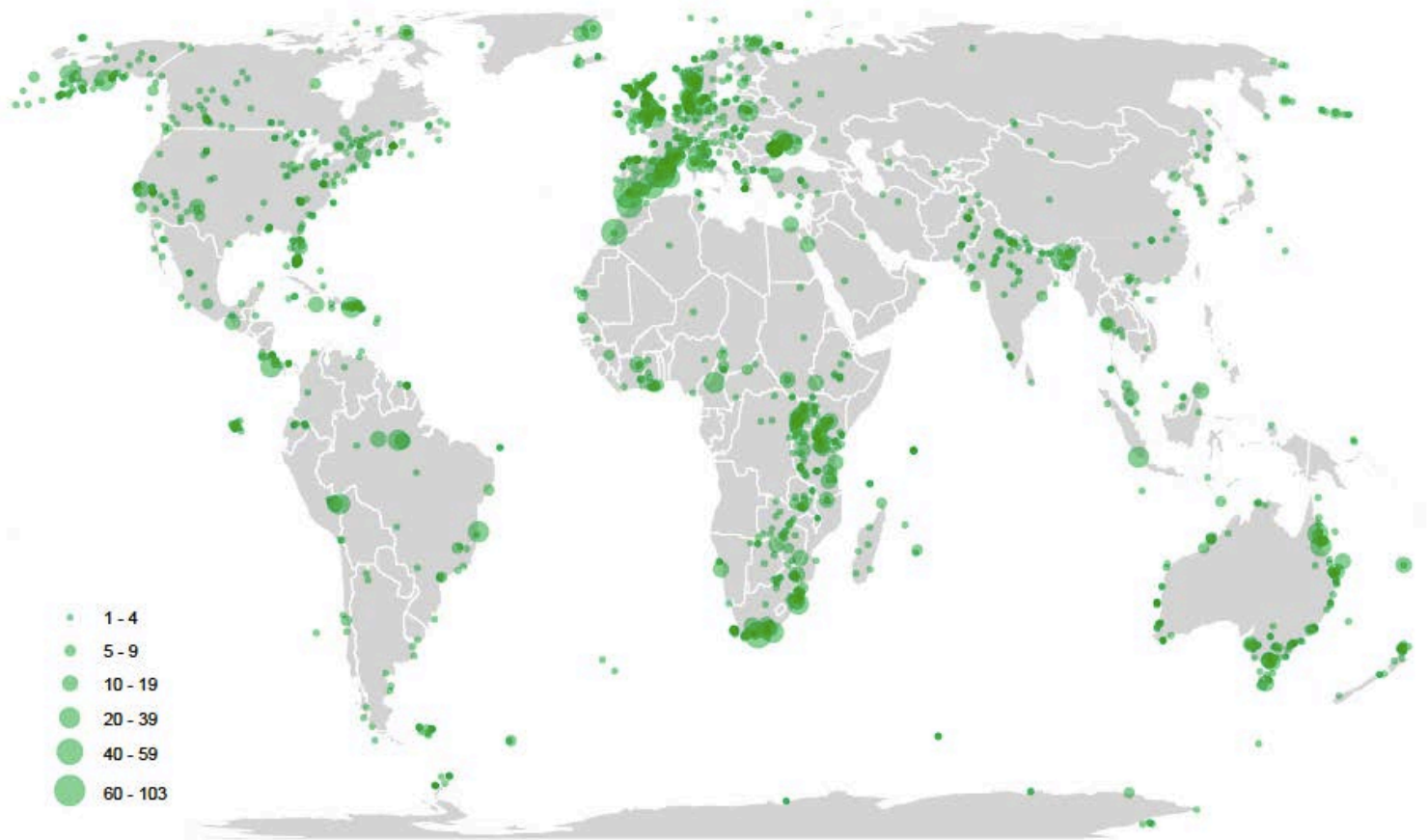
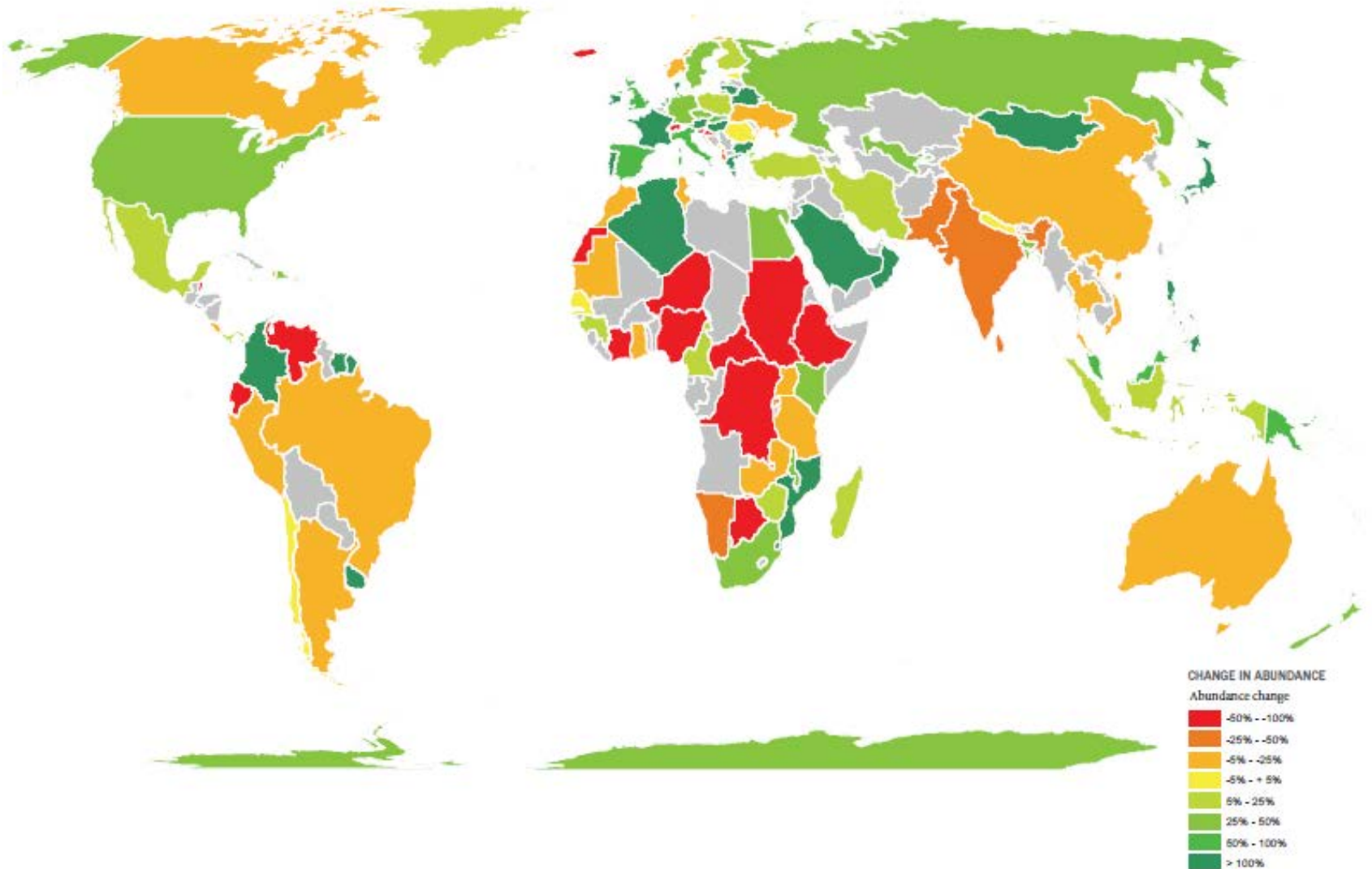


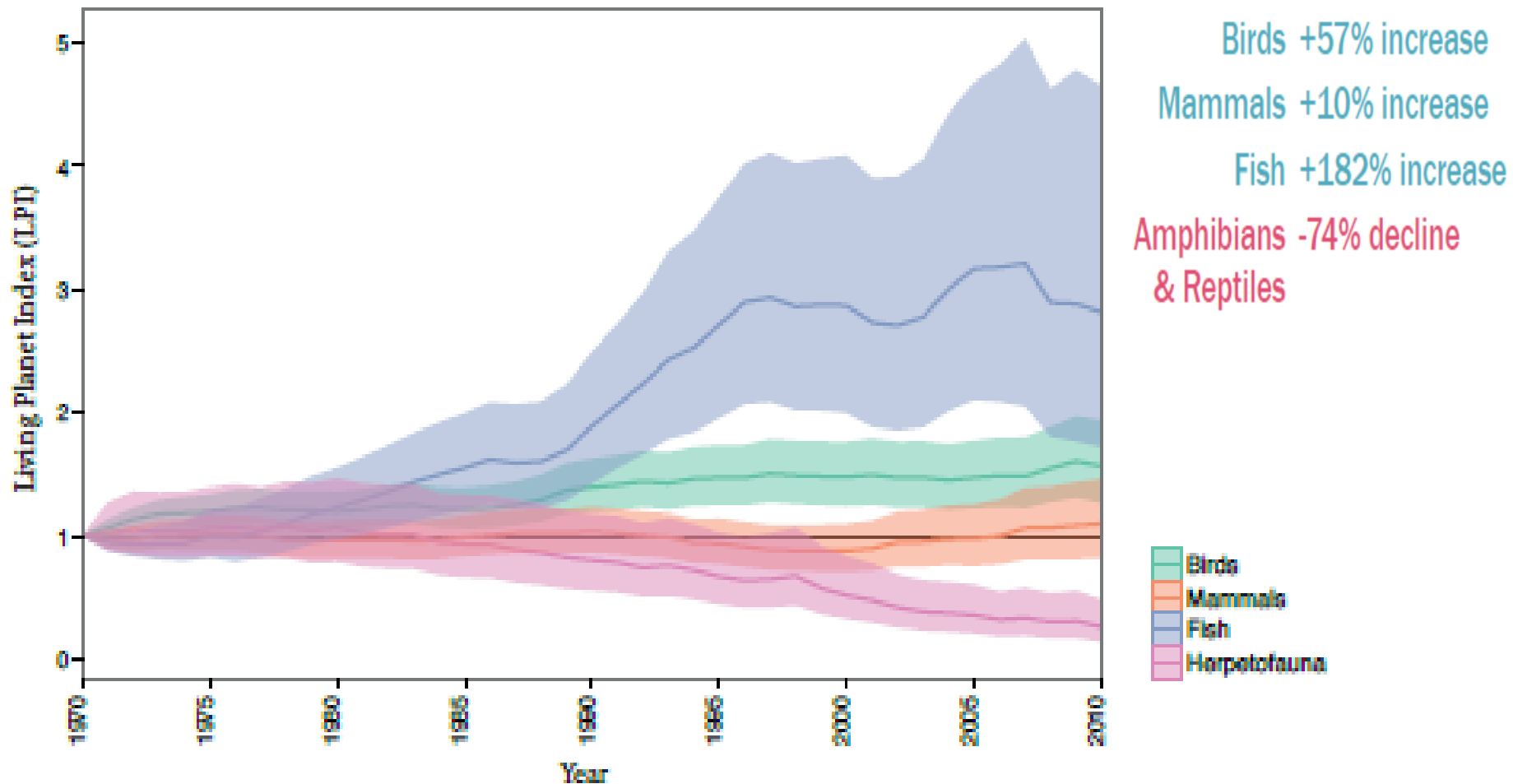
FIGURE 3

Geographical location of populations within the Living Planet Database.
Larger circles indicate locations with multiple populations.

Increase – decrease



Taxonomic differences



Threatened – not threatened

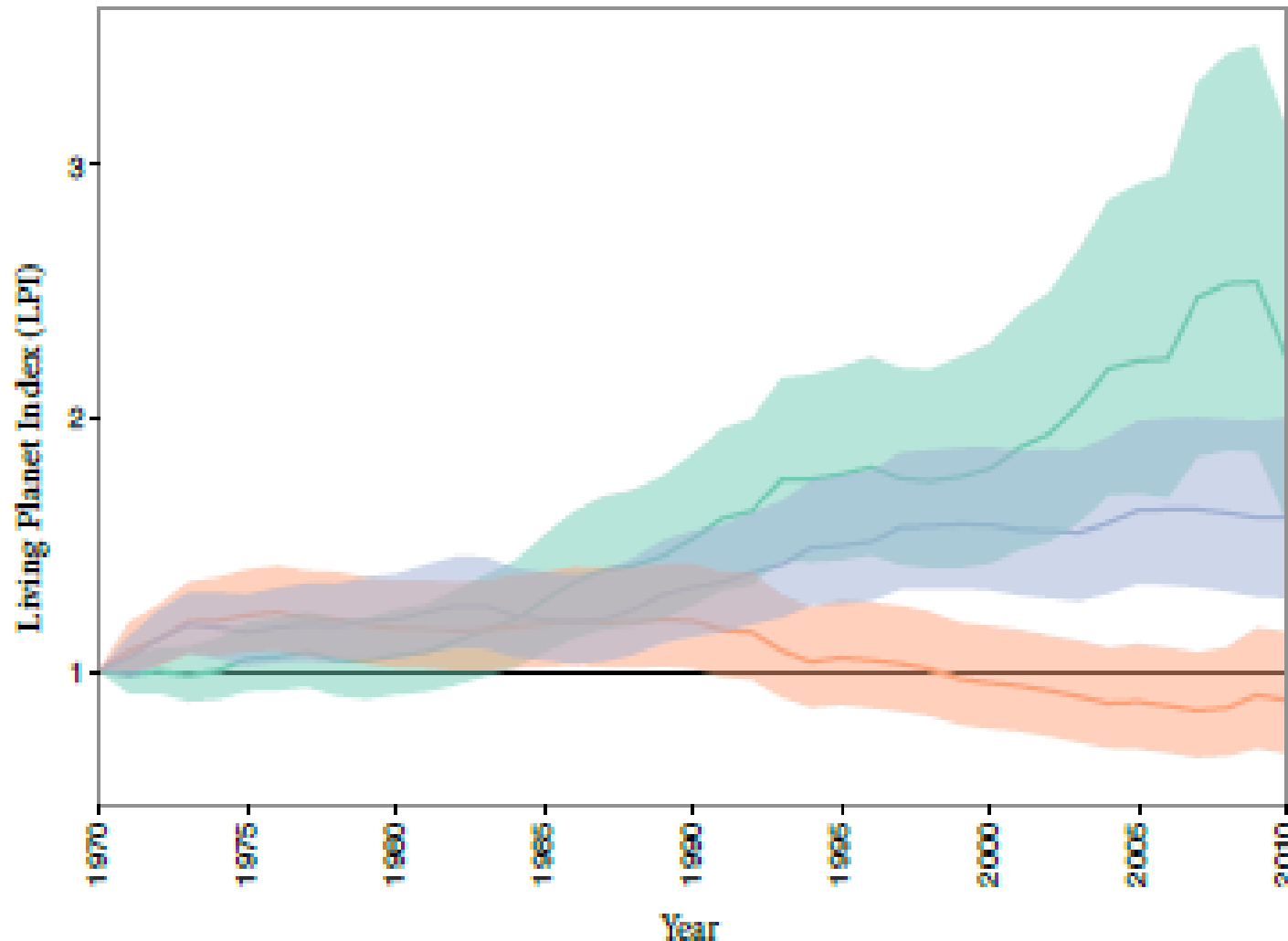


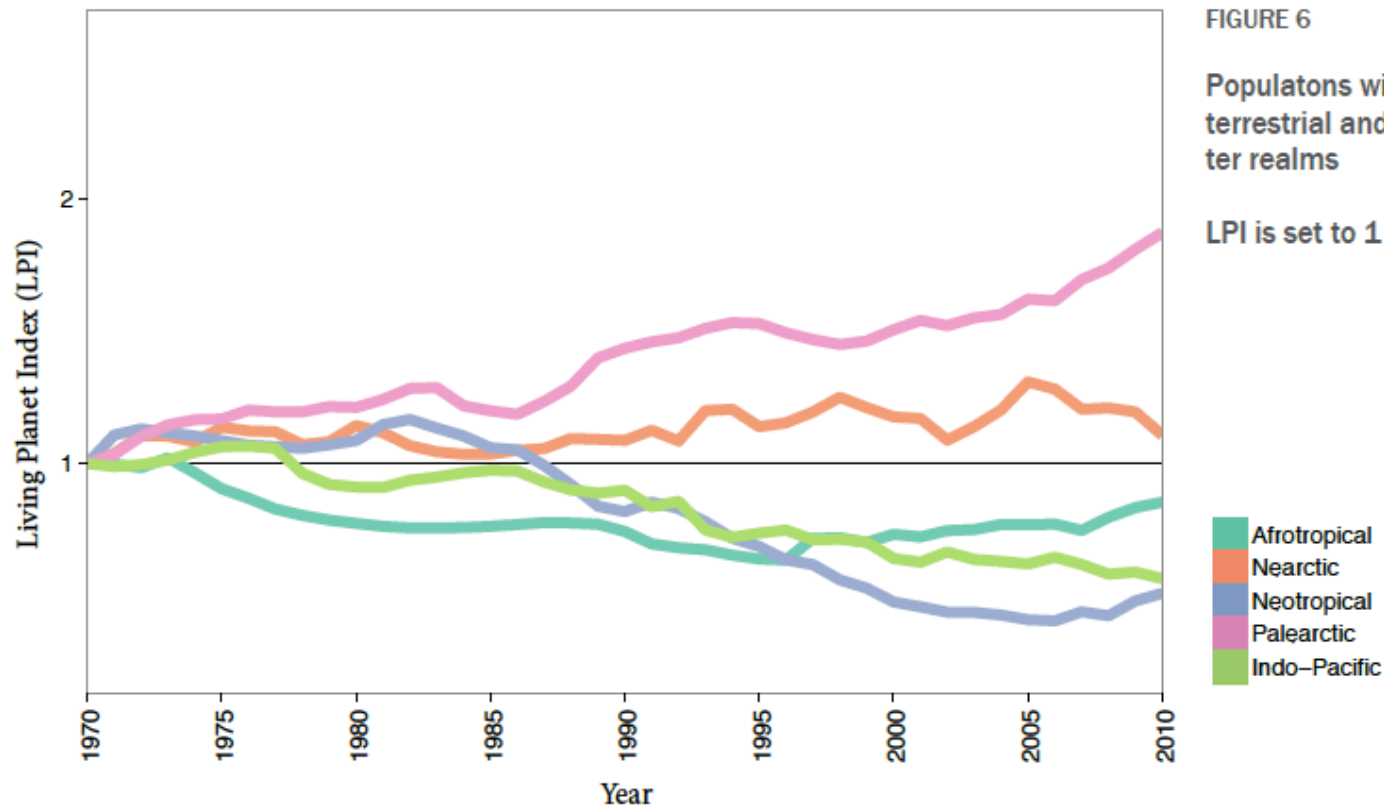
FIGURE 8

Populations within protected areas recorded as threatened or facing no threat. Unknown indicates that no information was available.

LPI is set to 1 for 1970

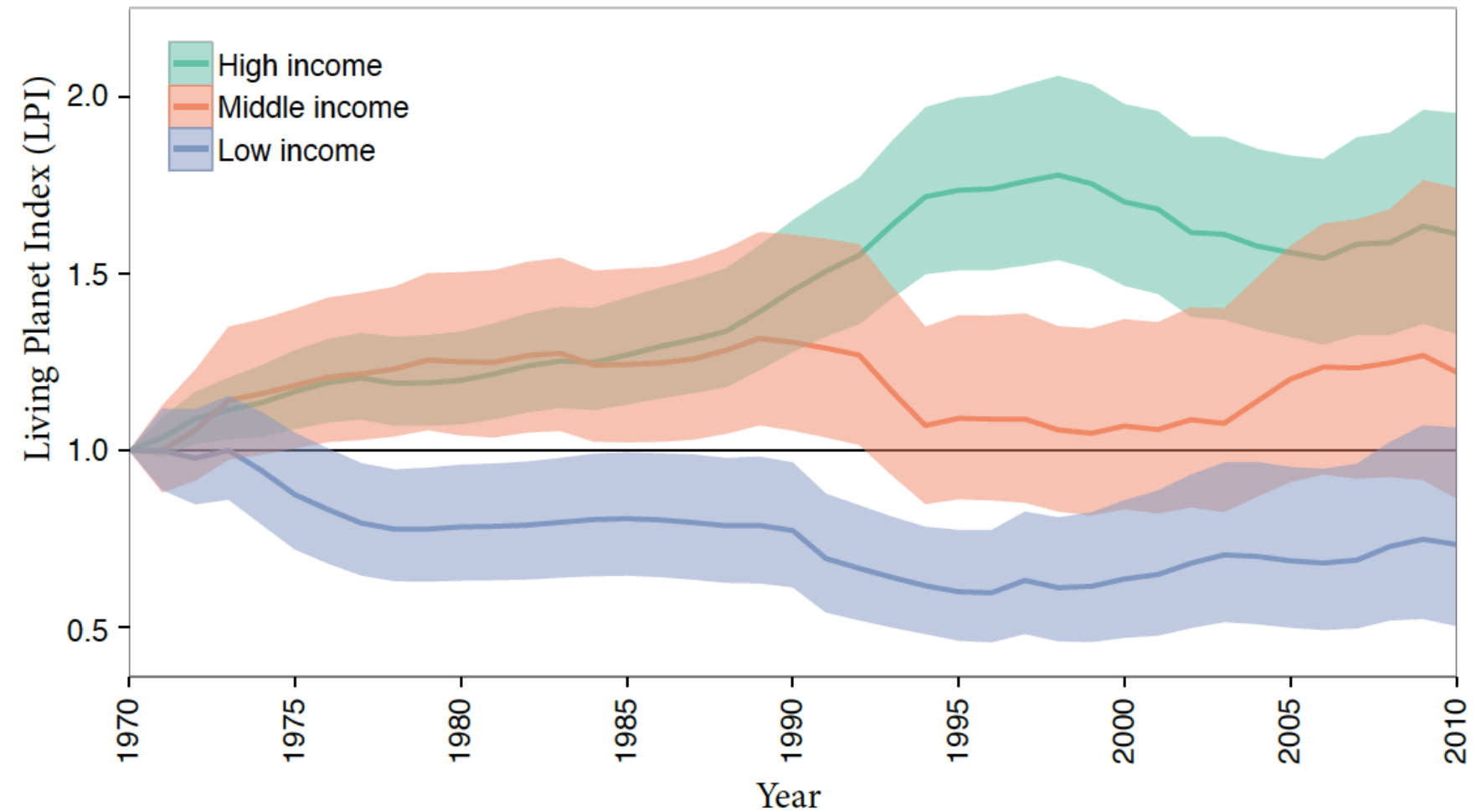
No threats
Threatened
Unknown

Realms



Income

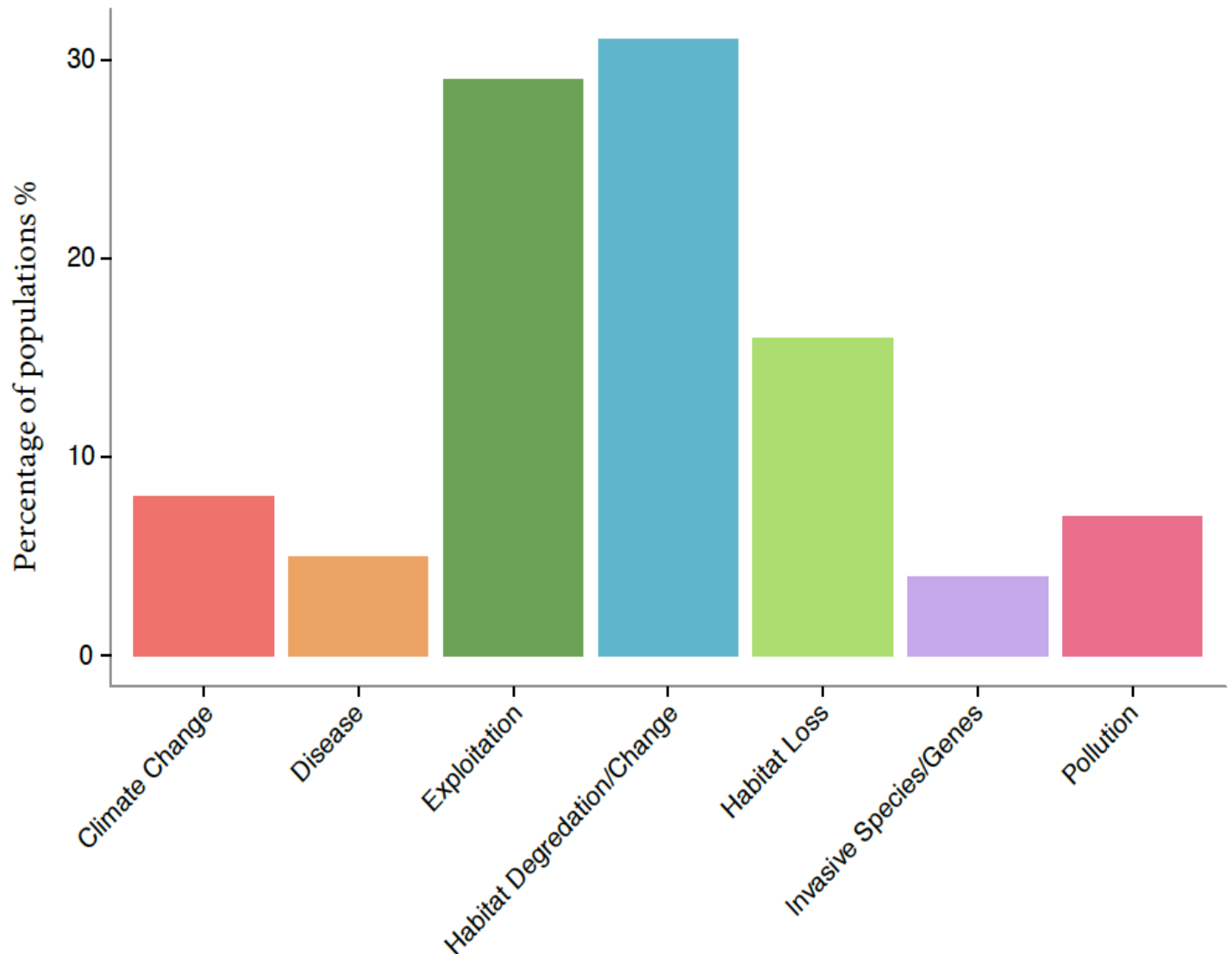
Year



Threats

FIGURE 9

Primary threats recorded for populations within protected areas.



<http://www.edgeofexistence.org/instantwild/>



Camera Trap Grid Location (Khonin Nuga)

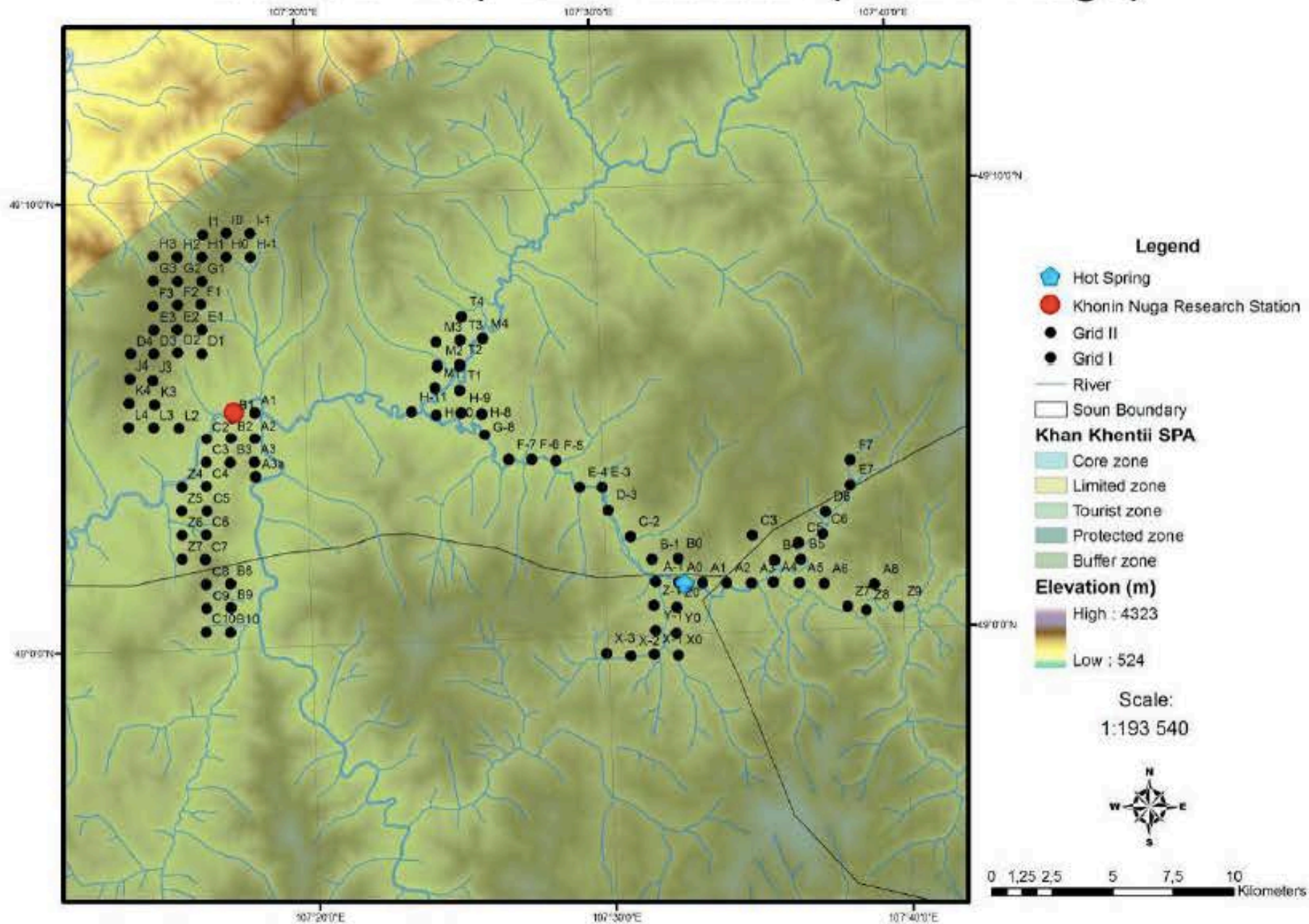


Plate 4: *Lynx lynx*, Grid I, Khonin Nuga



Plate 5: *Ursus arctos*, Khonin Nuga



Plate 6: *Sus scrofa*, Khonin Nuga



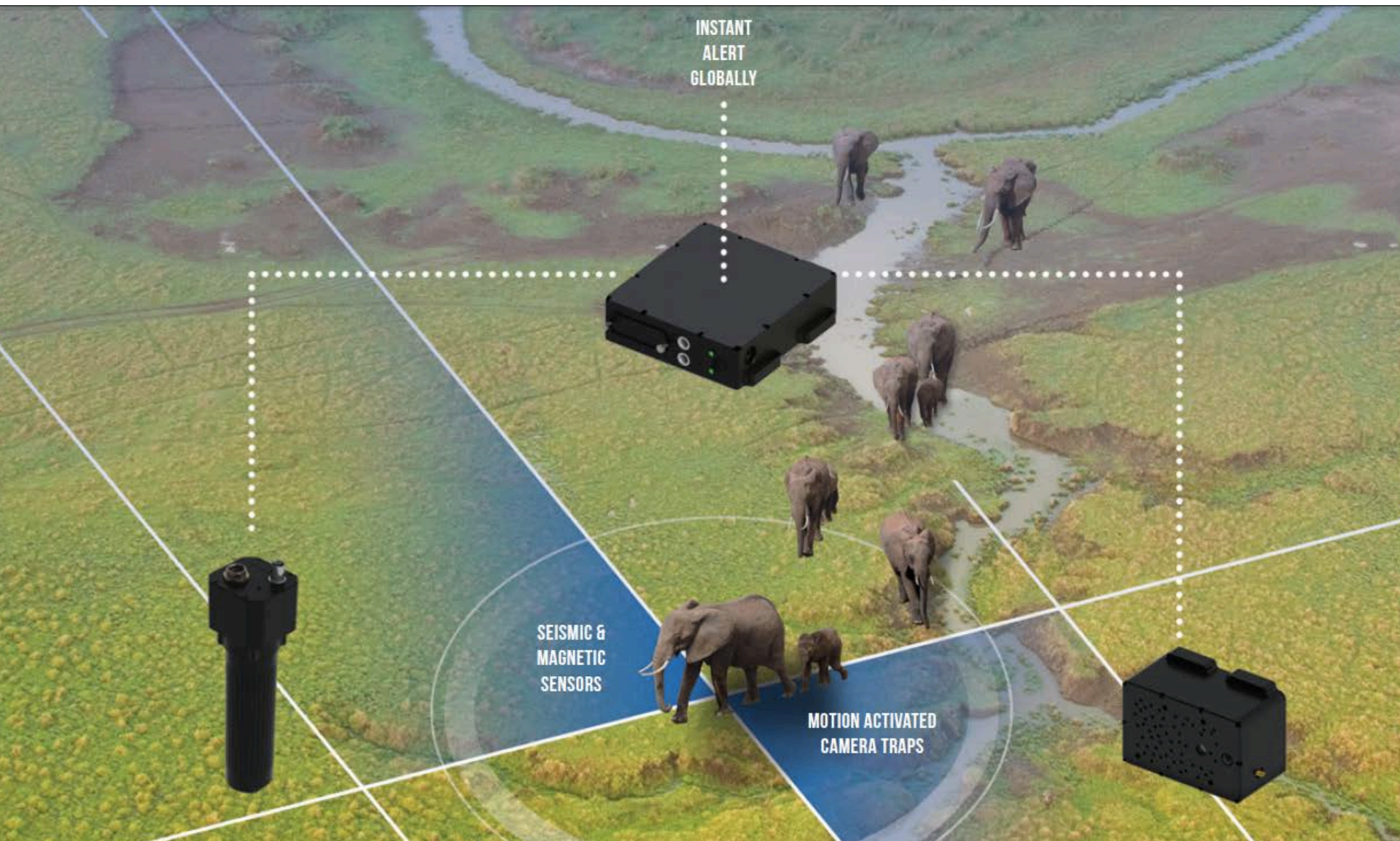
Plate 7: *Cervus elaphus*, Khonin Nuga



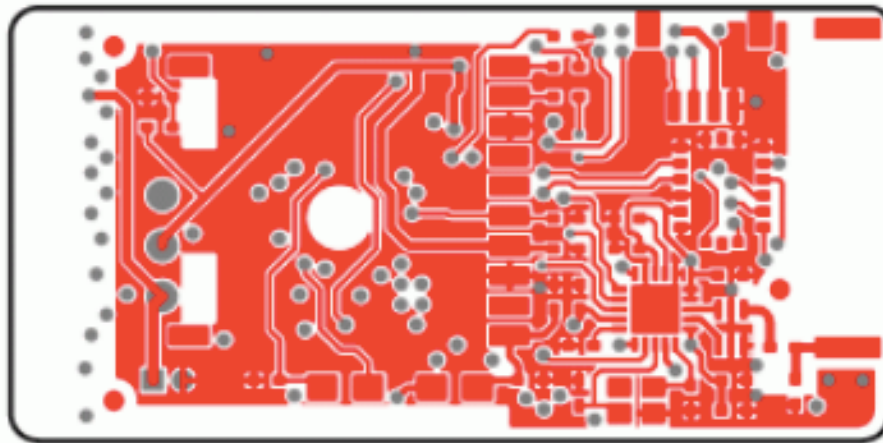
Marine monitoring



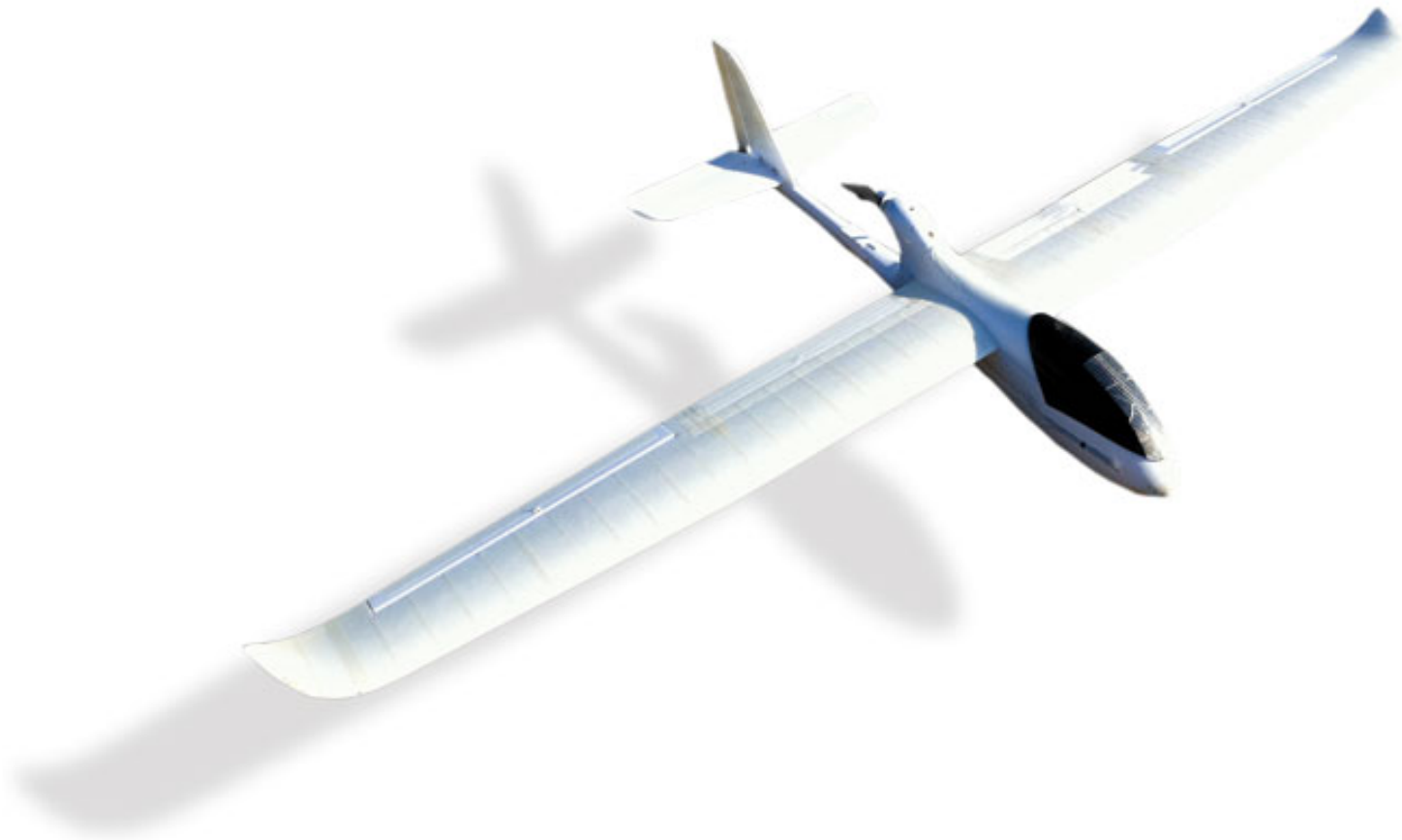
Real-time data



Tracking



Drones



SMART

[Home](#) [Brochures](#) [SMART Partnership](#) [Download SMART](#) [Support/Training](#) [Get Involved](#) [Contact Us](#)

Why SMART?

Traditional tools, technologies and resources are not stemming the illegal killing and trading of endangered species. As a result, threatened and highly valued biodiversity, such as tigers, rhinos, elephants, great apes and their habitats are being lost.

© JOHN GOODRICH / WCS



What is SMART?



Learn more about the SMART approach to improving conservation effectiveness

Why SMART?



Learn more about the need for SMART and why it is unique

How can SMART work for you?



Learn how SMART works in the field and how it can benefit you or your organization

SMART in the News

SMART ABCG Brown Bag with Emma Stokes
(27 September 2013)

SMART: An Open Source Solution
(27 September 2013)

[\[More...\]](#)

Monitoring from space



Are protected areas working?

