



IUCN
WORLD PARKS
CONGRESS
SYDNEY 2014

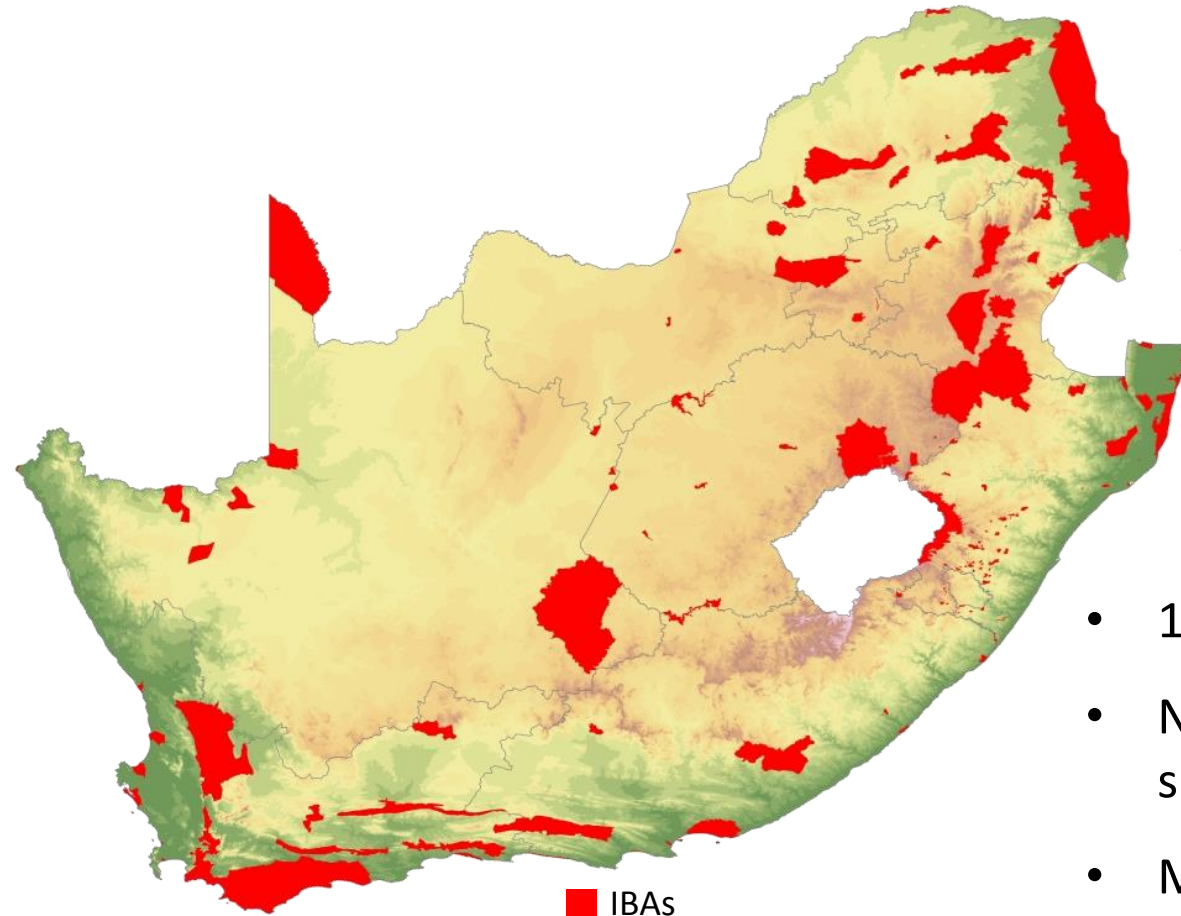
*Parks, people, planet:
inspiring solutions*

Protecting Important Bird and Biodiversity Areas using Biodiversity Stewardship: through government, landowner and NGO partnerships

Daniel Marnewick: BirdLife South Africa, Important Bird and
Biodiversity Areas Programme, daniel.marnewick@birdlife.org.za



Important Bird and Biodiversity Areas (IBAs)



- 122 IBAs in South Africa.
- Network of most important sites for bird conservation.
- More than 60% unprotected.

Protected Area Expansion Strategy

National Protected Area Expansion Strategy for South Africa 2008

Priorities for
expanding the
protected area
network for
ecological sustainability and
climate change adaptation

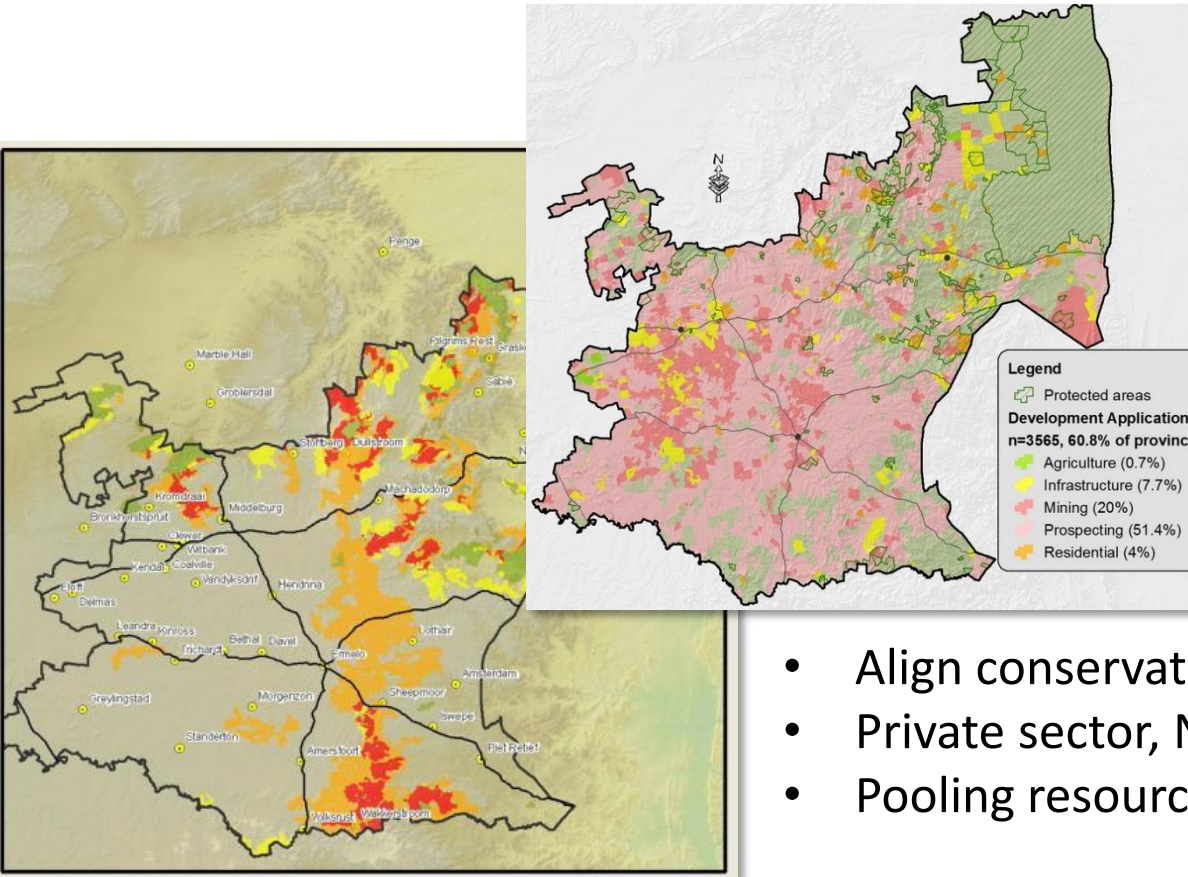


Government of South Africa



- Road map for PA expansion.
- Aims to meet targets – CBD Aichi target 11.
- Allows the formal protection of a multiple use landscape, under private ownership.
- Speaks to development and biodiversity needs.
- Provides the tools, e.g. **Biodiversity Stewardship**, a policy enabled, cost-effective model to expand protected area network.

Priority IBAs linked to the Protected Area Expansion Strategy



- Align conservation priority areas.
- Private sector, NGO and Gov. collaboration.
- Pooling resources and building capacity.

The Tool: Biodiversity Stewardship

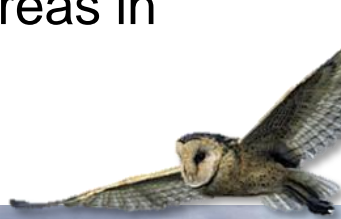
Case Study: Mpumalanga Lakes District

- 350 natural pans and wetlands in pristine grasslands.
- An 'IBA in Danger'.
- Proclaimed a PA in January 2014 using Biodiversity Stewardship.
- 60 000ha, 16 land owners.



Biodiversity Stewardship: Expand the PA Network

Ensuring that privately owned areas with high biodiversity value receive secure conservation status and are linked to a network of other conservation areas in the landscape.



Biodiversity Stewardship



*Creates
Tourism
And Jobs*



Ensuring that landowners enjoy tangible benefits for their conservation actions.

Existing motivations:

- Keep out mining.
- Cultural value.

Introduced benefits:

- Management support.
- Economic development.
- Fiscal benefits, e.g. taxes & rebates.
- Protection into perpetuity.

Biodiversity Stewardship

- Good biodiversity management practice: private landowner become empowered decision makers.
- Merging development and conservation objectives.

*Food and
water
security*



Climate change mitigation

An inspiring solution

Innovative and effective

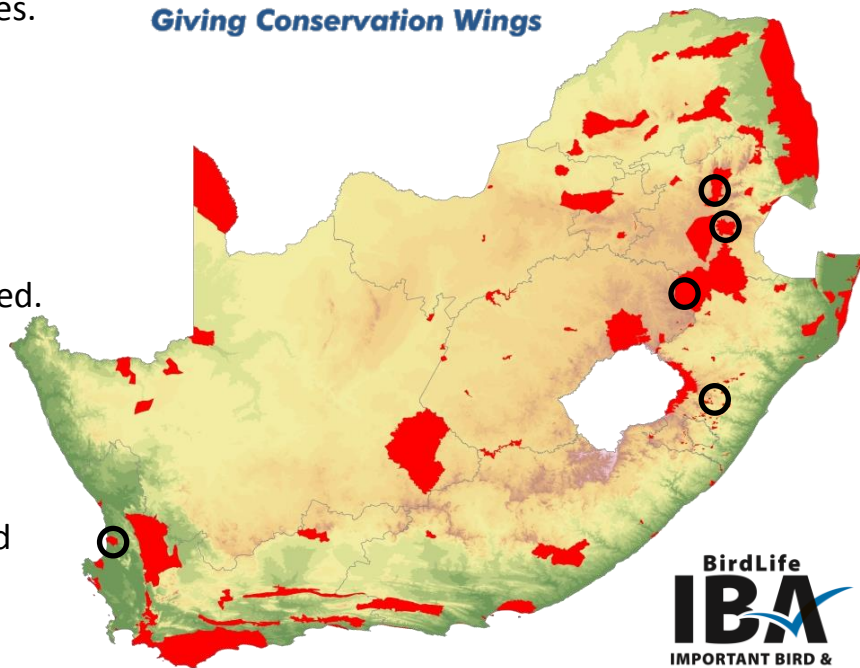
- Allows protected area expansion on privately owned property.
- Allows the protection and management of multiple use landscapes to meet conservation and development objectives.
- Allows private and NGO sectors to invest in PA expansion.

Evidence of implementation and impact

- BirdLife South Africa has assisted to proclaim 60 000 ha of pristine grassland and wetlands under Biodiversity Stewardship in January 2014. An additional 50 000 ha planned. These are critical areas for migratory and endemic birds.

Applied elsewhere or more broadly

- Biodiversity Stewardship has been implemented in South Africa since 2004 by government departments and NGO, and has proclaimed 31 protected areas in total.



What makes it work?

Components that lead to success

- Aligning conservation priority areas across governments and NGOs.
- Pooling resources and building capacity.
- Allows PA expansion on private land.
- Enables government, corporate and NGO partners collaboration.

Enabling factors

- Legislated protected area status.
- Legislated fiscal and management benefits accruing to land owners.

National Protected Area Expansion Strategy for South Africa 2008

Priorities for expanding the protected area network for ecological sustainability and climate change adaptation



Government of South Africa





Daniel Marnewick: BirdLife South Africa, Important Bird and Biodiversity Areas Programme, daniel.marnewick@birdlife.org.za

