



IUCN
WORLD PARKS
CONGRESS
SYDNEY 2014

*Parks, people, planet:
inspiring solutions*

Best Guide Principals for Transboundary Conservation

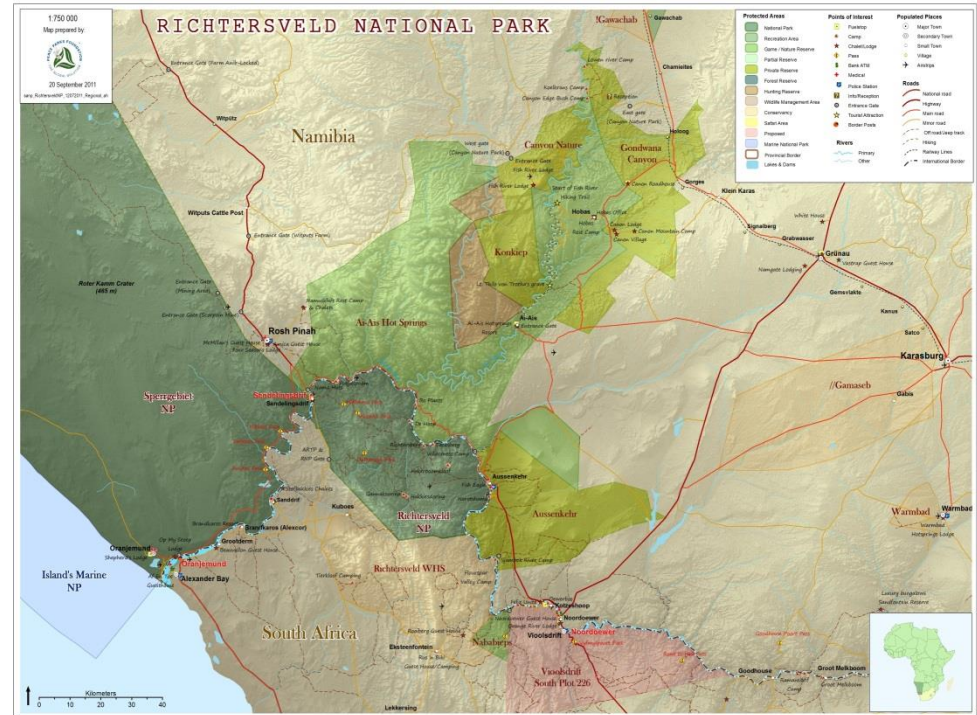
Nick de Goede

/Ai/Ais-Richtersveld Transfrontier Park

Sponsored by IUCN PAPACO

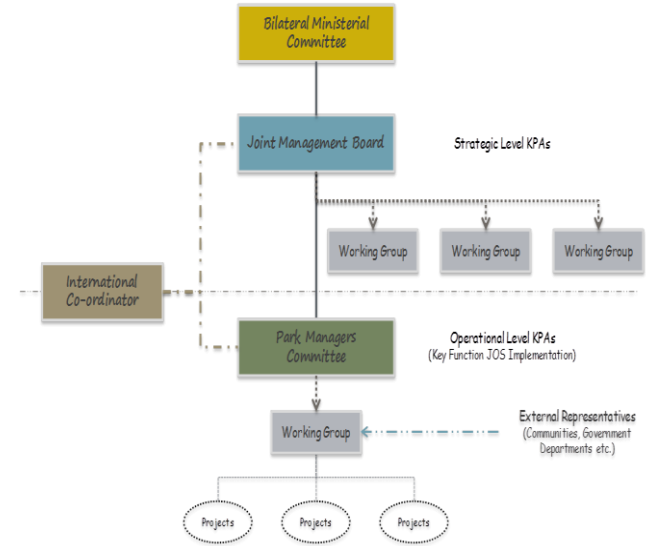
Overview

- Governance of ARTP
- Staff development
- Conservation Management
- Tourism
- Pontoon



Governance

- Treaty signed by Presidents of Namibia and South Africa
- Governed by Joint Management Board on a strategic level
- Park Managers are guided by a Joint Operation Strategy for day to day cross border operations
- Harmonising of Policies and Procedures
- A bottom up approach



Staff Development



- Area familiarisation
- Training:
 - Mountain rescue
 - Skippers
 - Geological information system
 - Front office and customer care
 - Other as plant, bird & geology
 - All training were sponsored by donors

Conservation Management

- Joint Law enforcement
 - Joint radio network
- Alien vegetation clearing
- Waste management
- Heritage study



Combined Tourism Development



- Desert Knights Mountain Bike Tour
 - Managed by PMC
 - Profitable
- Wildrun - Concession
- Desert Kayak Trails
 - Community project
 - Sponsored



Pontoon

- Link between parks
- Service to tourists
- Sponsored by Department of Environmental Affairs
- Complication during floods



An inspiring solution?

Innovative and effective

- It has shown that two or more countries can work together on ground level as long as there is support from the top. A bottom up approach is necessary to get any project off the ground.

Evidence of implementation and impact

- The ARTP is a fully functional TFP and many of the examples mentioned have been presented to other TFCA's for implementation.

Applied elsewhere or more broadly

- The cross border radio network is a prime example that there is ways to make management more effective and there is legislation that can assist.

What makes it work?

Components that lead to success

- There is top level support and buy in from the ground
- Joint Operation Strategy is fully implemented
- Re connecting the Nama community

Enabling factors

- Successful tourism products to make it financial sustainable
- Staff working towards a common goal.





Nick de Goede : /Ai/Ais-Richtersveld Transfrontier Park, SANParks,
nick.degoede@sanparks.org

