

Building Climate Resilient Parks and People: A community-led approach to EbA

Melanie Heath, Director Science, Policy and Information
Edward Perry, Global Climate Change Policy Coordinator
BirdLife International



World Parks Congress, Sydney 2014
Social Resilience and Social Cohesion:
Communities Coping with Climate Change

Ecosystems provide multiple goods and services



Restoring, maintaining, enhancing services builds social resilience in face of climate change (EbA)



Biodiverse agroforestry systems to offer diverse livelihood options



Reforestation to help combat erosion and landslides



Wetland restoration to buffer from floods and drought



Mangrove restoration to defend against storm surge and SLR

“Ecosystem Conservation for Climate Change Adaptation in East Africa”

Purpose:

- integrate EbA into adaptation policies

Activities:

- national policy reviews
- national capacity building workshops
- advocacy and policy support
- site-based work

Yala Swamp, Kenya



Akanyaru Wetland, Rwanda



Echuya Forest, Uganda

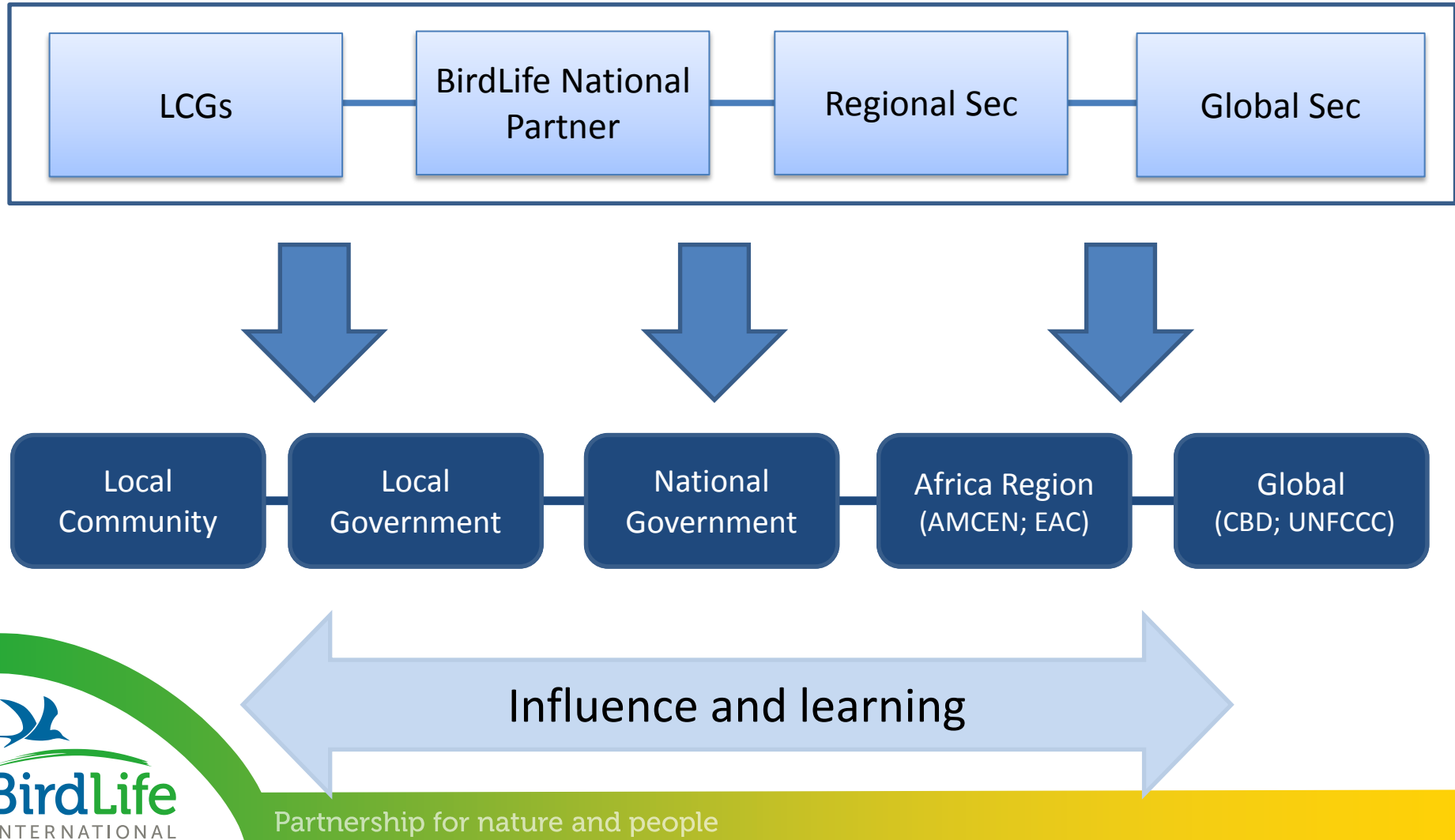


Mpungwe Mountain Chain, Burundi



Working from grassroots to global conventions to build climate resilience

BirdLife International



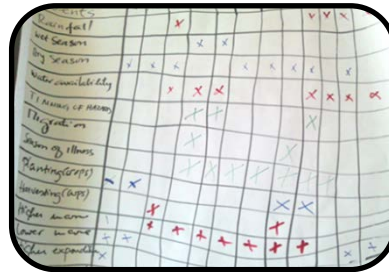
Community-led vulnerability assessment



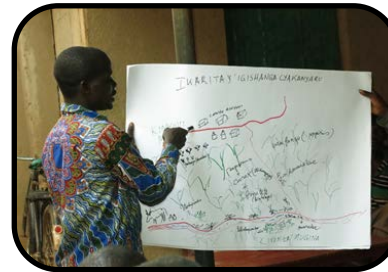
Tools for vulnerability assessment



Community Resource Mapping



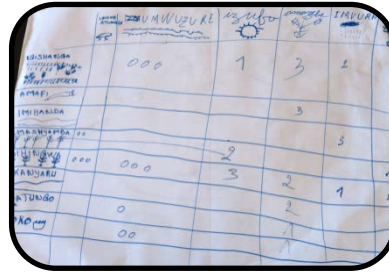
Seasonal Calendar



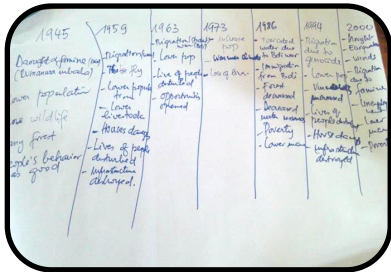
Transect Walk



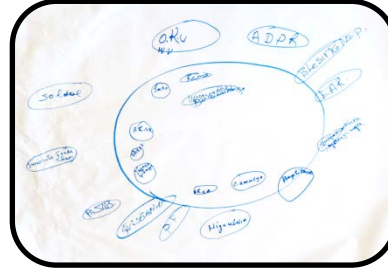
Hazard Mapping



Livelihood Vulnerability Matrix



Timeline



Stakeholder Mapping



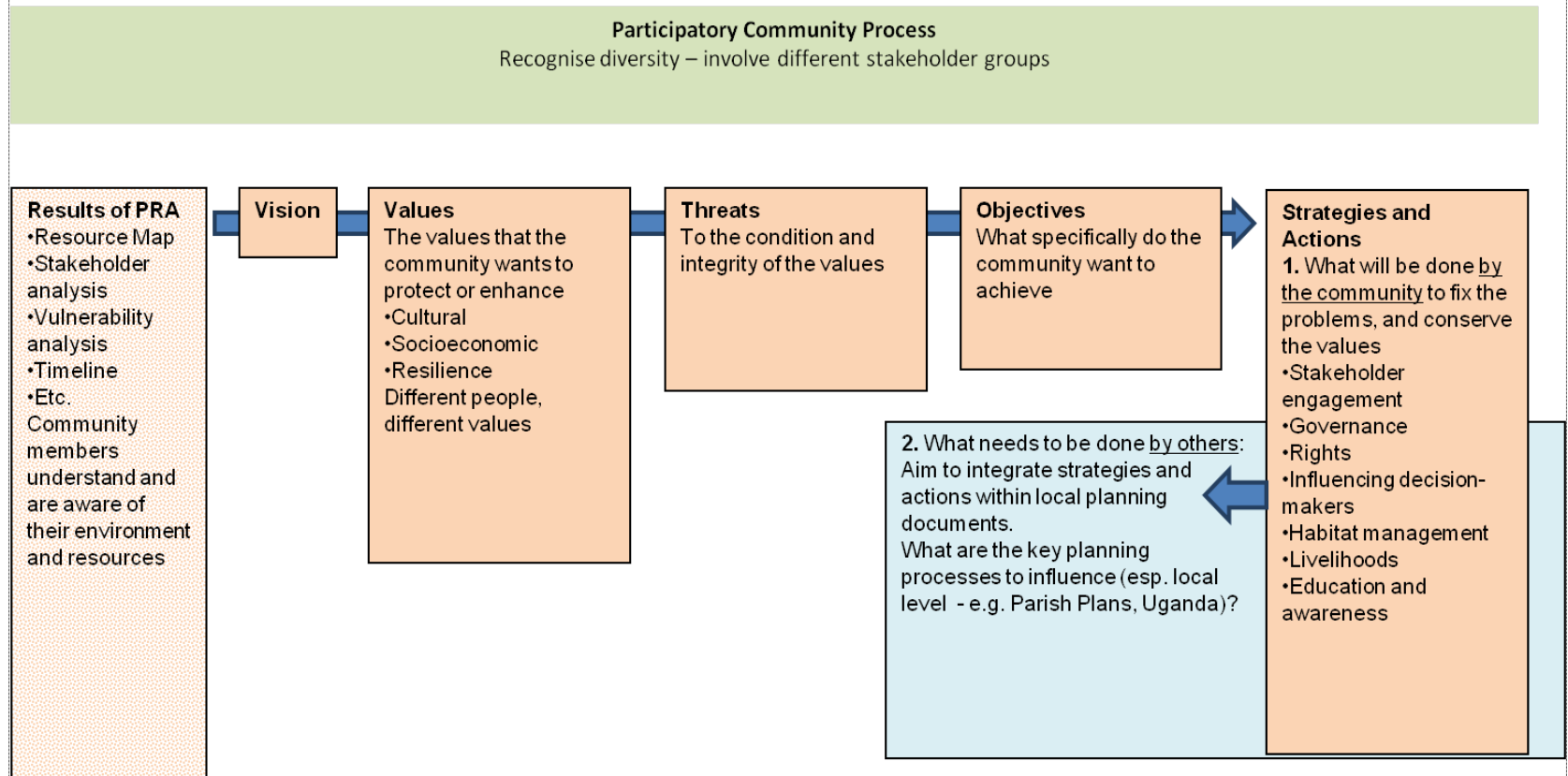
General insights

- Communities **highly dependent on ecosystems** for livelihoods
- Ecosystems already part of **coping strategies** with climatic and non-climatic disasters
- Impacts of **climatic events accentuated** because of **ecosystem degradation** (combination of climatic and non-climatic pressures)
- Considerable **heterogeneity** within a community (assets; entitlements; location of houses)



Community adaptation plans

From PRA to Community Plan

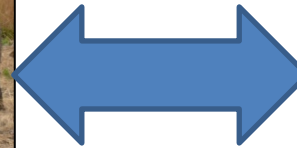


Examples of actions in community adaptation plans

- Switching to more climate-resilient crops
- Diversifying livelihoods (e.g. agroforestry and ecotourism)
- Restoration of degraded slopes to reduce erosion, increase agricultural productivity, and control water flow
- Awareness-raising coupled with community monitoring/reporting to reduce bush-fires
- Advocacy for establishment of Protected Area



Current State of Mpungwe



Alternate State (Ruvubu NP)

Empower communities to influence local policies

- Integrating community plans into county development plans
- Informing conservation management plans (e.g. Echuya Forest Reserve)



Ruyigi Commune Development Planning

Knowledge-sharing for sustainability and up-scaling



Burundi National EbA Workshop



Burundi Working Group

- 18 SSG in Kenya meet each year
- National multi-stakeholder working groups
- National multi-stakeholder training workshop



Kenya SSG Workshop

Summary

- Future of parks and Communities interlinked
- Management and governance needs to be participatory and climate-smart
- Utility of ecosystem-based adaptation approaches
- Links /tool for national adaptation planning

