

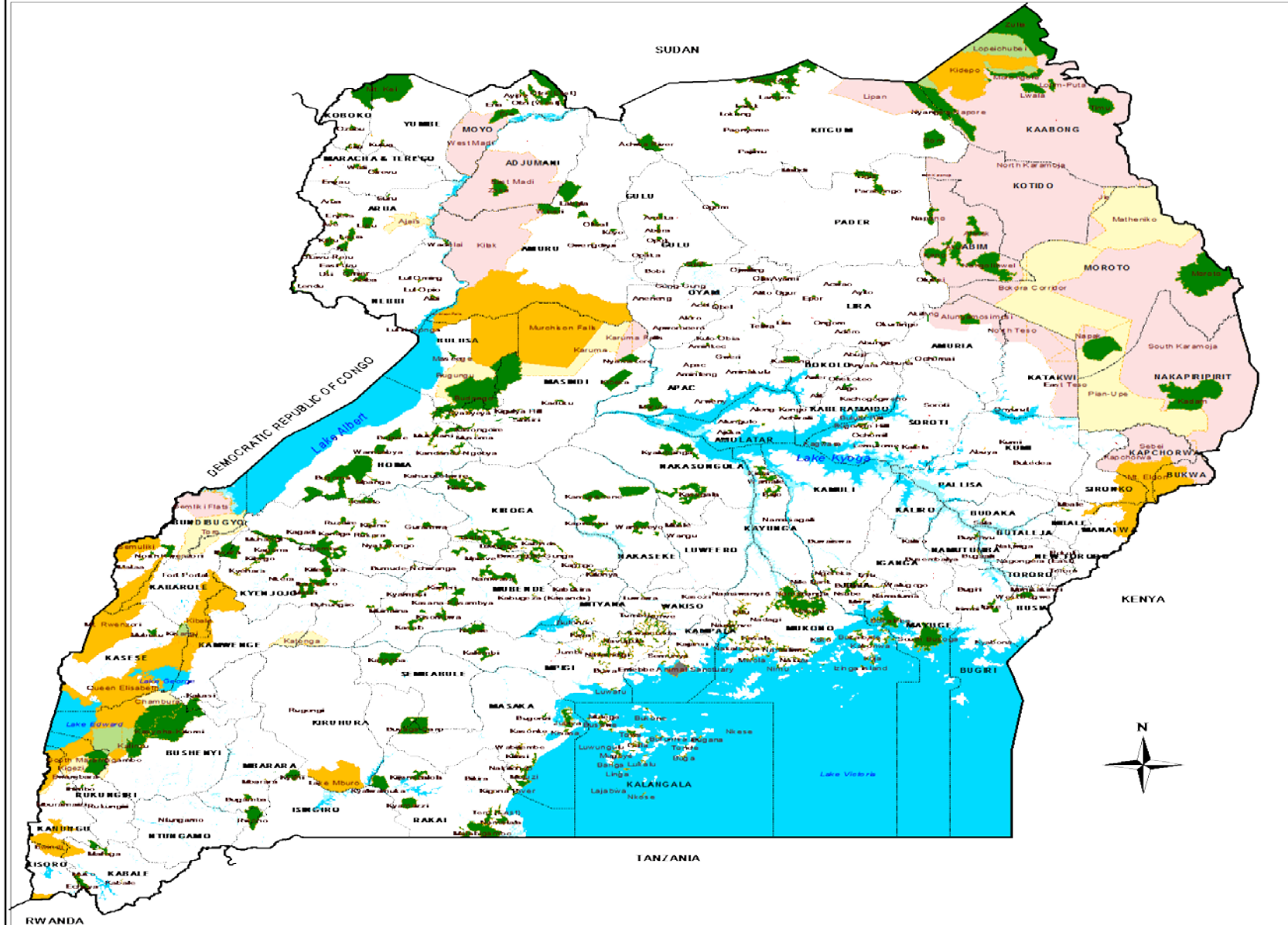


# **Securing lives of PA adjacent communities**

## **A case study around Kibale National Park –Uganda**

*Presented by*  
**Kandole Annet Balewa**  
*Manager –FOREST Programme*





# Context

- Uganda's population is estimated at 34m people, over 80% living on agriculture based income
- About 5m people live around protected areas National Parks and reserves, central forest reserves, or other gazetted areas
- The communities are affected by crop raiding; elephants, baboons, wild pigs,
- Research has indicated some measures; include establishment of trenches, live fence, guarding;
- Buffer crops; tea, tobacco, soya bean and chilli

## **The Problem of PA adjacent:**

- Estimated 1.83 million Ugandans are food insecure.
- High levels of school drop out to guard crops,
- Food insecurity among house holds adjacent PA,
- Abandoned land due to crop raiding leading to low production.
- Poverty;
- Environmental degradation;
- Low agriculture productivity
- Some measures to address crop raiding are costly for poor households.
- Crop raiding can even lead to household/domestic violence.





# Effects of crop raiding

- High school drop rates, they have to remain in the gardens guarding crops.
- Low incomes for households affected by crop raiding.
- Food insecurity 73% of communities around PAs
- A vicious cycle of poverty and also domestic violence.



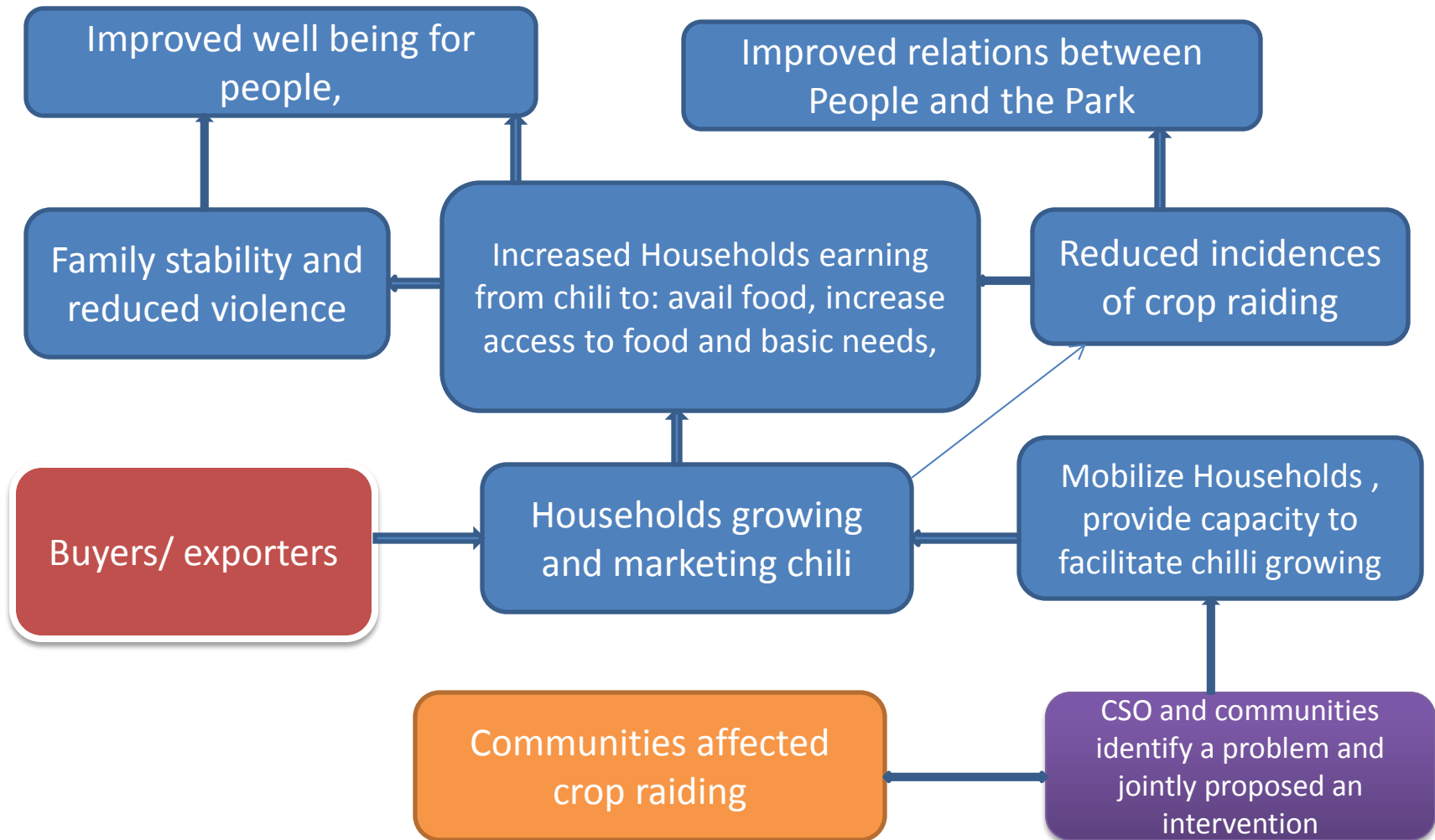
# Key points to note about chilli

- Can be grown under semi-tropical or tropical conditions with annual rainfall ranging between 600 mm and 1250 mm.
- The type of chili grown is *capsicum annum* (chili pepper).
- It is dried and smoked, the repugnant smock is the repellent.
- The chilli can be intercropped hence does not need big chunks of land.
- Has domestic and external markets, main destination is Netherlands.
- Chilli production is throughout the year.





# Turn around livelihoods of poor people



# Game changers

- Income: On average the chilli enterprise contributes about \$ 60 per week to a household = \$240 month to the household income of the members in the group
- Restoring hope for communities to use land: Land that had been abandoned by communities due to crop raiding is now under utilization.
- Strategic links to the markets guaranteed households of incomes coupled with availability of the export market through buyers.
- Evidence that the chili works and is a cost effective method of repelling elephants.
- Buy in of the intervention by UWA,
- Social mobilization;



# Recommendations

- Continue to hold a discussion around parks and food security and urge governments to invest in community livelihoods:
- Protected areas should support adjacent communities to access, avail, sustain and utilize food.
- Developing Technology to improve enterprise development for PA adjacent communities.
- Consider investing in developing markets: Fair trade

