

**‘Why urban parks matter in creating healthy and liveable cities’**

# **Western Sydney Parklands – A Decade of Human and Environmental Health Benefits Provided by Australia’s Largest Urban Parkland**

**Noel Corkery<sup>1</sup> & Suellen Fitzgerald<sup>2</sup>**

1. Managing Director - Corkery Consulting
2. Director - Parramatta Park & Western Sydney Parklands Trusts

# Urban Growth + Increased Density

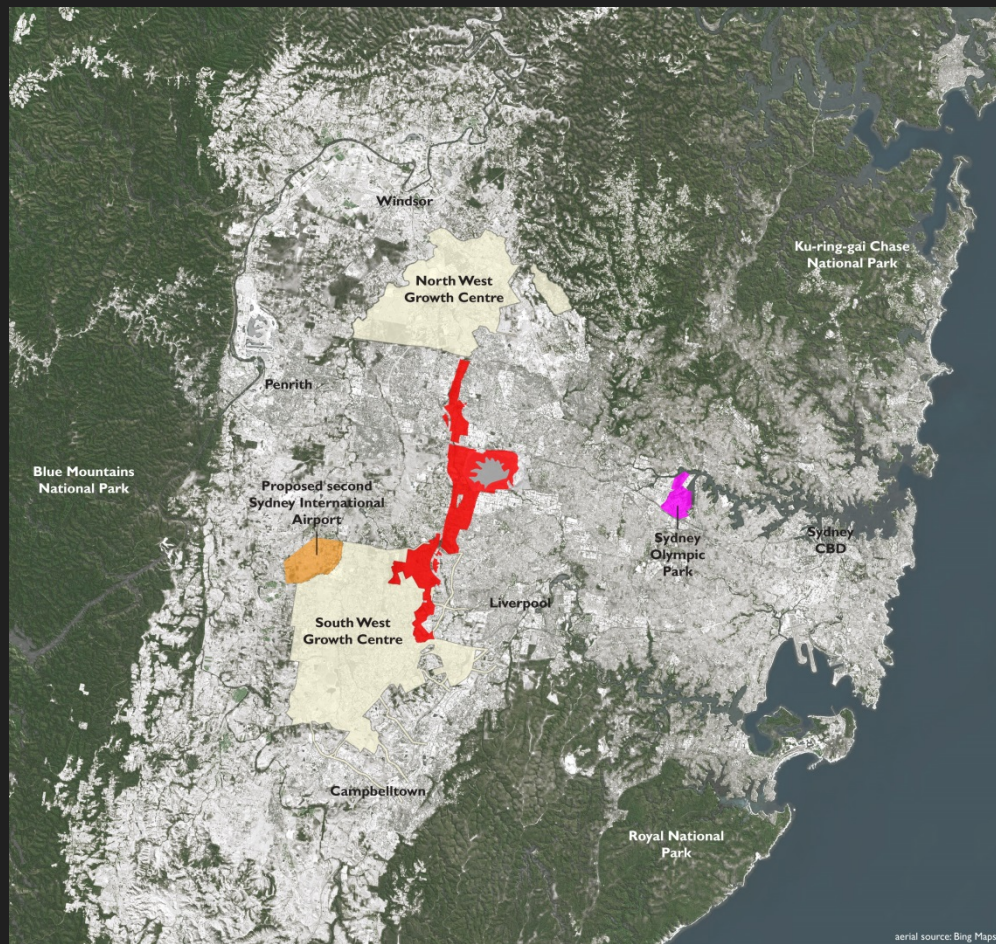
- growth of cities
- >90% of Australians already live in cities
- Sydney to add 1.3 million people by 2031 = 5.9 million
- pressure on urban parks & 'protected areas'
- new urban parks + increased capacity of existing
- integration of sustainable development + biodiversity conservation in urban parks
- multi-disciplinary approach essential



# Benefits of Urban Parks

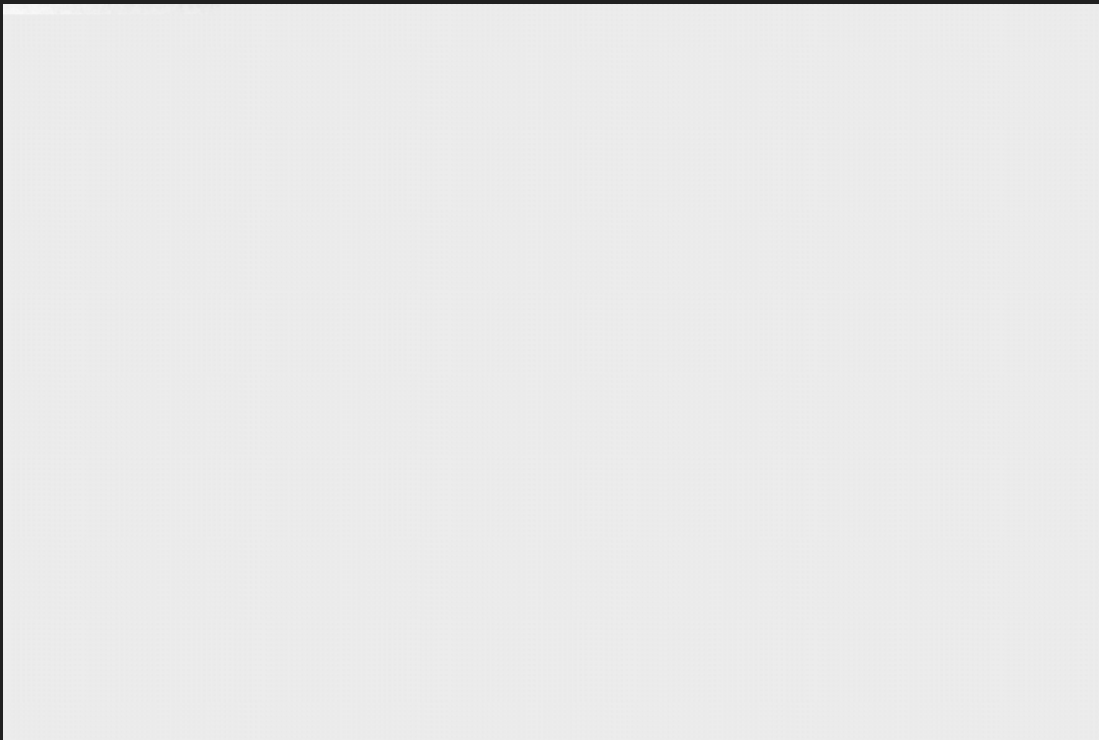


# Western Sydney Parklands



- 5,280 ha
- 25 km long
- land assembled over 30+ years
- CPW endangered community
- 2000 Sydney Olympics venues
- 2004 Management Vision
- 2006 Western Sydney Parklands Act
- Parklands Trust
- Plan of Management 2020
- Growth Centres
- Proposed international airport

# Context

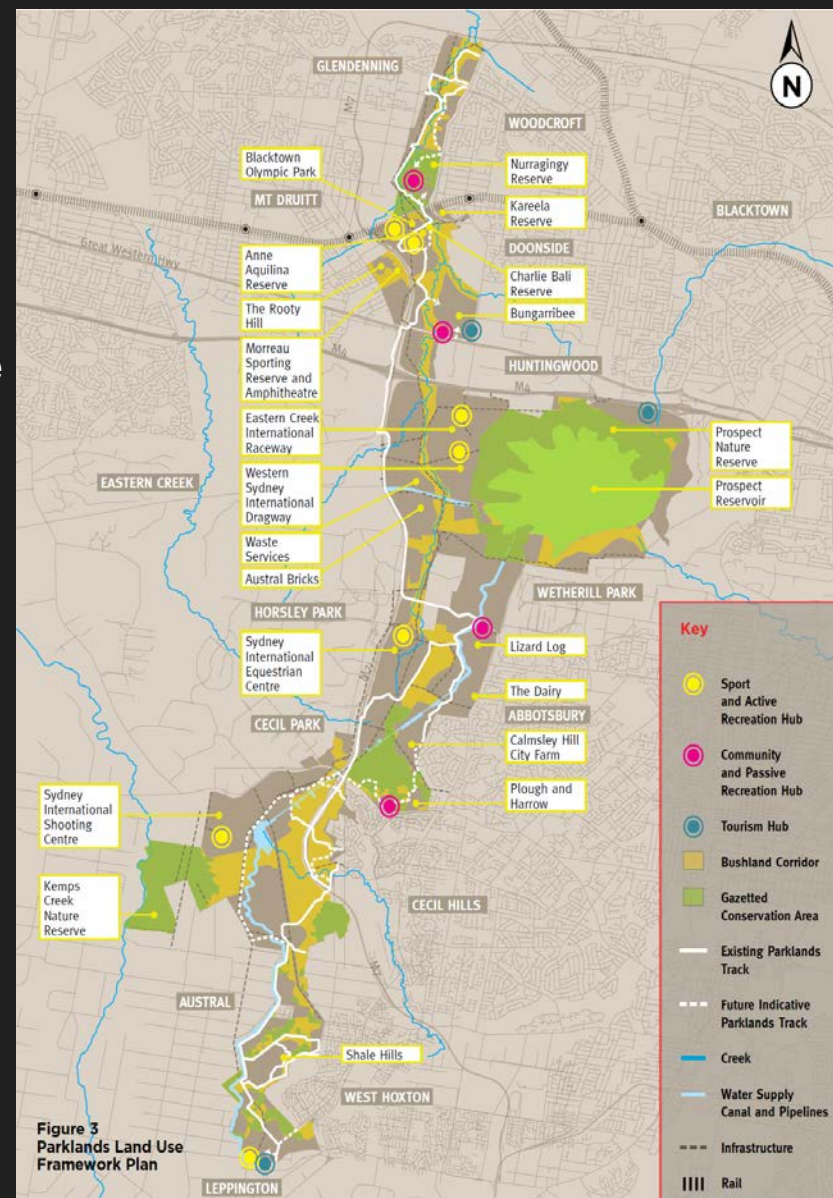


- adjoining residential & employment areas
- 2 million people within 25 minutes of Parklands
- western Sydney population = 4 million by 2036
- Eastern Creek corridor
- remnant CPW vegetation
- Prospect Reservoir
- Blacktown Olympic Park
- M7 Motorway



# Parklands Vision

- diversity of social + ecological + economic outcomes
- a place for people of all backgrounds to meet, celebrate, learn, play & appreciate the natural environment
- a venue for communities to create a sustainable future on the Cumberland Plain
- ecological & heritage conservation + links
- economically sustainable & creating jobs & wealth for its community



# Recreation, Culture & Participation for Wellbeing





# Conserving Environment, Heritage & Urban Farming





# Economic Management & Partnerships for Sustainability



# Health & Liveability Outcomes

- 70% growth in annual visitation to 3.5 million last year
- rising attendance at lifestyle events “Now we don’t have to commute to play as well as work”
- recognition of benchmark design for Western Sydney
- over 1000 ha land restoration with 180,000 indigenous plants in the ground
- environmental monitoring underway
- over 100 ha under urban farming & grazing
- a plan for delivery of 8,800 jobs and \$2.2B of positive economic benefits