



WOW! WONDERS OF WADDANGALLI



AIMEE FREIMANIS
PARRAMATTA CITY COUNCIL PROJECT

ENGAGING DIVERSE COMMUNITY

'WADDANGALLI –

CREATING A HUB OF EXPERIENTIAL & INCLUSIVE LEARNING IN WESTERN SYDNEY'

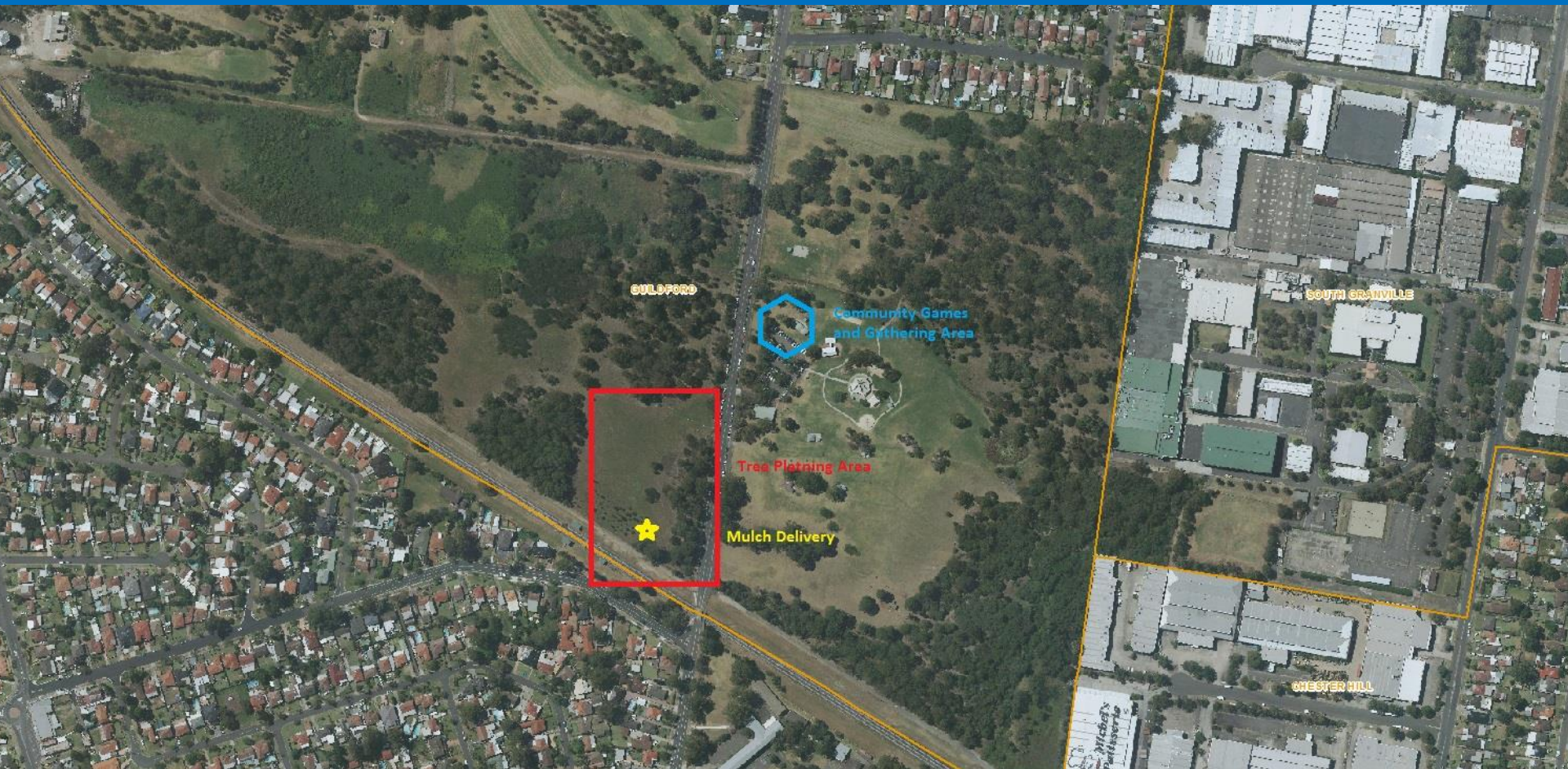


- Why?
- How?
- Benefits



WHY?

URBAN BUSHLAND IS VALUABLE





“Restoring habitat or setting up reserves in cities can boost people’s health, improve their ability to think and lower violence and aggression in the community”

- NERP 2013





“Children who experience contact with nature develop improved self worth and higher cognitive function”

- *Beyond Blue 2012*

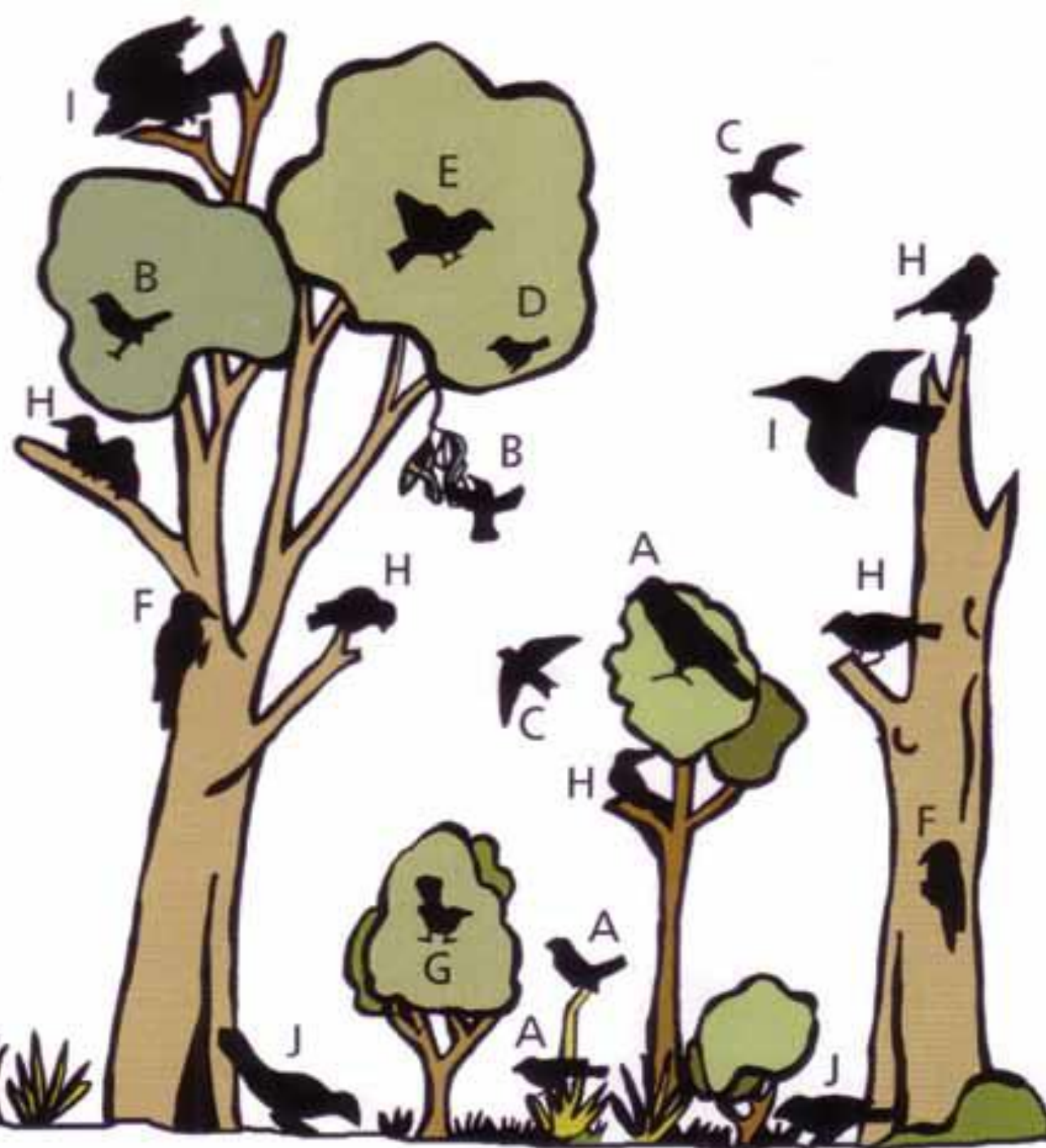
OUR MEDICINES COME FROM BIODIVERSITY



Western Sydney has unknown biological resources in Cumberland Plain Woodland which could be important for medicine for future generations



“50% of woodland birds could be extinct by 2050”
- State of Australia’s Birds 2010



- A seed-eaters
- B nectar feeders
- C hawkers
- D small foliage gleaners
- E large foliage gleaners
- F gleaner of prey from trunk and branches
- G sallying
- H pouncer
- I bird of prey
- J ground-forager

The background is a solid blue color. In the top right corner, there is a large, faint circular graphic that resembles a protractor or a scale, with markings from 0 to 270 degrees. In the bottom left corner, there are several faint, overlapping circular lines. In the bottom right corner, there is a small circular graphic with a dashed outer ring and a solid inner ring, both with arrows indicating a clockwise direction.

HOW?

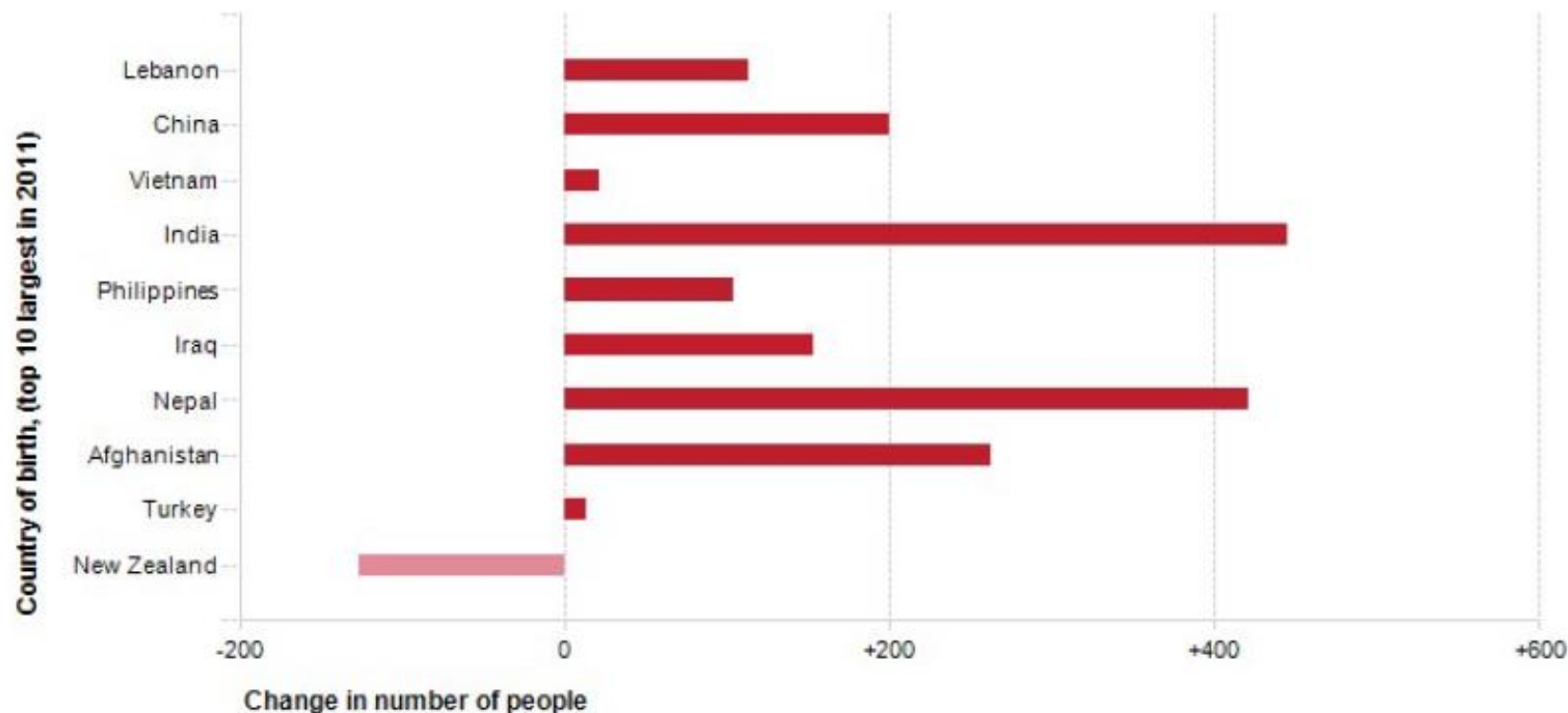


We are kick-starting structural diversity and invertebrate diversity by introducing fallen logs and planting islands of habitat suited to insectivorous perching woodland birds

WADDANGALLI'S NEIGHBOURS ARE DIVERSE

Change in country of birth, 2006 to 2011

Woodville Ward



Source: Australian Bureau of Statistics, Census of Population and Housing, 2006 and 2011 (Usual residence data)
Compiled and presented in profile.id by .id, the population experts.





Parramatta Council's
Get Back to Nature
Program is attracting
diverse community
members, **especially**
new arrivals or
people who have
been in Australia less
than 12 months

The background is a solid blue color. It features several faint, light-blue circular graphics. In the top right corner, there is a large circular scale with degree markings from 0 to 210. Below it, there are smaller concentric circles with arrows indicating a clockwise direction. In the bottom left corner, there are more faint circular lines and arrows. The word "EXPERIENTIAL" is centered in the middle of the image in a bold, white, sans-serif font.

EXPERIENTIAL







The background is a solid blue color. It features several faint, light blue geometric patterns. In the top right corner, there is a large circular protractor-like scale with degree markings from 0 to 270. In the bottom right corner, there are concentric circles with arrows indicating a clockwise direction. In the bottom left corner, there are also concentric circles with an arrow indicating a counter-clockwise direction. The word "INCLUSIVE?" is centered in the middle of the image in a bold, white, sans-serif font.

INCLUSIVE?



Wonders of Waddangalli WOW!

Community Event for Sathya Sai Organisation Australia

Please join us for a fun event to help protect and restore habitat for the rare and endangered plants and animals of Waddangalli Woodland.

WHERE

Campbell Hill Pioneer Reserve,
Campbell Hill Road, Guildford.

FREE ACTIVITIES

- ✓ Planting trees to help our community and the environment
- ✓ Guided bushwalk to learn about the wonders of the woodland
- ✓ Australian Wildlife Displays (meet some real live Aussie animals)
- ✓ Free Games Soccer and Frisbee

Limited parking available so please come early or be sustainable and come with a friend.



SATURDAY
14TH JUNE
9AM – 1:00PM

Please wear suitable clothes for the bush (covered shoes, trousers, sun hat etc.), bring a picnic blanket and a water bottle. It would be great to see everyone there to help us restore the land and save endangered species including the beautiful *Scarlet Robin* and *Acacia pubescens*.

For more information NSW Region West Enviro Care Officer 0423 028 909



To register email enviroed@parracity.nsw.gov.au

Making it Meaningful

1008 trees were planted – this is an auspicious number for this community





WE FORMED PARTNERSHIPS

Understanding the needs of new arrival clients at *Settlement Services International* we shaped a program to help:

- build work skills,
- familiarise local places
- and build relationships with other new migrants

SHARING LOCAL ABORIGINAL STORIES





LANGUAGE FILMS

- Sudanese
- Arabic
- Tamil
- Mandarin
- Vietnamese
- Spanish



E-BOOK IPAD INTERACTIVE LEARNING RESOURCE

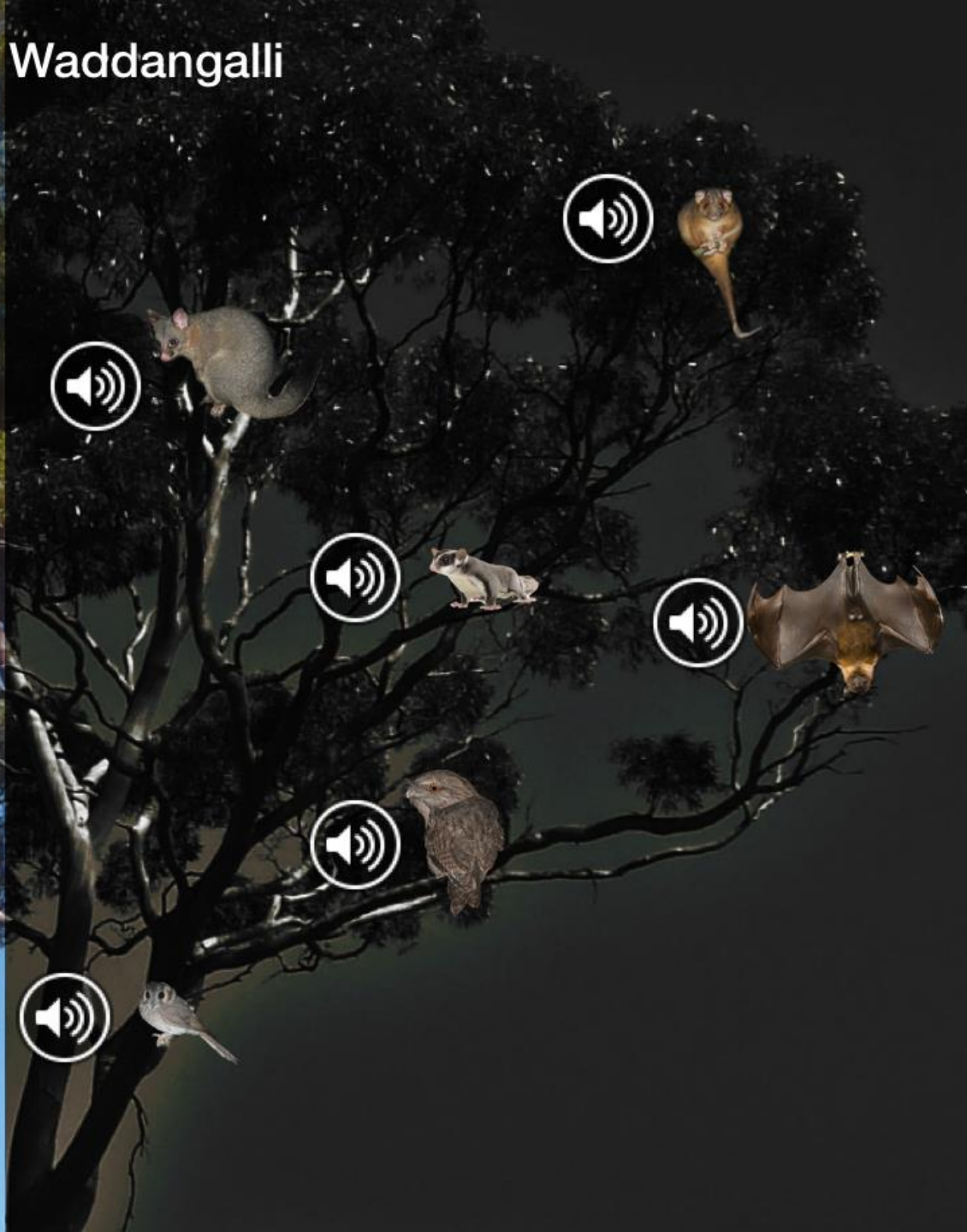


FIELD OF MARS

ENVIRONMENTAL EDUCATION CENTRE

EXPERIENCE ENGAGE ENABLE

Sounds of Waddangalli



BENEFITS

The background is a solid blue gradient. It features several faint, light-blue geometric elements: a large circular scale with degree markings (0 to 210) in the top right; a smaller circular scale with degree markings (0 to 90) in the bottom right; and various concentric circles and arcs scattered across the left and bottom edges.

*“One touch of nature
makes the
whole world kin”*

William Shakespeare

