

Welcome to

Session 2:

Perspectives on health – current practices and future opportunities for park managers



Session Manager

Chris Rose
General Manager Regional Services
Parks Victoria





Panel Members



Carol Ritchie - Chief Executive Europarc Federation.



Lou Sanson - Director General Department of Conservation NZ.



Dr Nomvuselelo “Mvusy” Songelwa - Managing Executive Parks SANPS



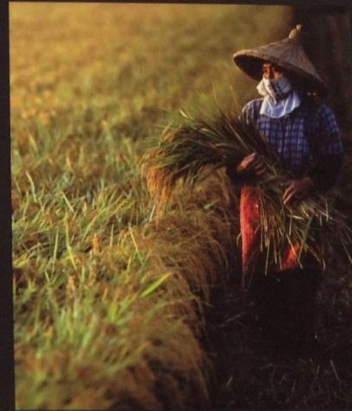
Dr Chong-Chun Kim- Executive Director Korea National Parks



Keynote Address

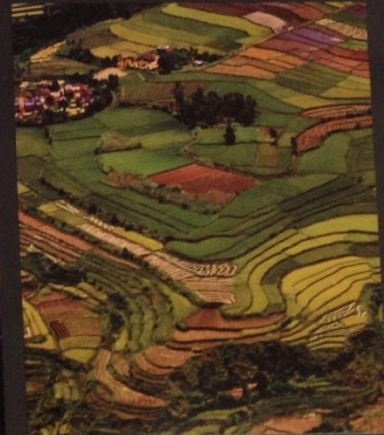
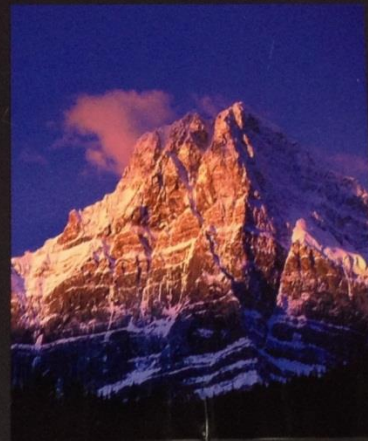
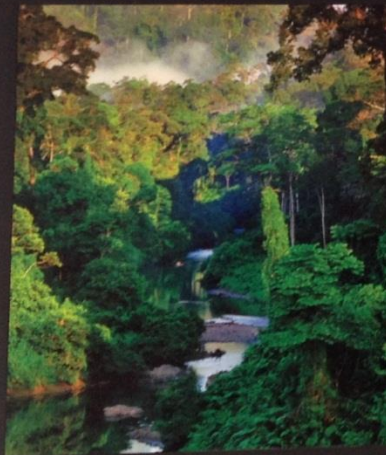
Jeffery McNeely

Member of UNEP International resource panel, Chair of the IUCN-red list committee, A.D White professor at Cornell University.



THE WEALTH OF NATURE

Ecosystem Services, Biodiversity, and Human Well-Being



Jeffrey A. McNeely • Russell A. Mittermeier
Thomas M. Brooks • Frederick Boltz • Neville Ash

Series Editor: Cristina G. Mittermeier • Foreword by Julia Marton-Lefèvre

A vibrant, high-angle photograph of a dense tropical forest. A river flows through the center of the image, with a small waterfall visible in the distance. The forest is composed of various shades of green, with sunlight filtering through the canopy. The text is overlaid on the image in a bold, yellow font.

HEALTH, ECOSYSTEM SERVICES, AND PROTECTED AREAS

By
Jeffrey A. McNeely

CONSTITUENTS OF WELL-BEING

ECOSYSTEM SERVICES

Supporting

- NUTRIENT CYCLING
- SOIL FORMATION
- PRIMARY PRODUCTION
- ...

Provisioning

- FOOD
- FRESH WATER
- WOOD AND FIBER
- FUEL
- ...

Regulating

- CLIMATE REGULATION
- FLOOD REGULATION
- DISEASE REGULATION
- WATER PURIFICATION
- ...

Cultural

- AESTHETIC
- SPIRITUAL
- EDUCATIONAL
- RECREATIONAL
- ...

LIFE ON EARTH - BIODIVERSITY

Security

- PERSONAL SAFETY
- SECURE RESOURCE ACCESS
- SECURITY FROM DISASTERS

Basic material for good life

- ADEQUATE LIVELIHOODS
- SUFFICIENT NUTRITIOUS FOOD
- SHELTER
- ACCESS TO GOODS

Health

- STRENGTH
- FEELING WELL
- ACCESS TO CLEAN AIR AND WATER

Good social relations

- SOCIAL COHESION
- MUTUAL RESPECT
- ABILITY TO HELP OTHERS

Freedom of choice and action

OPPORTUNITY TO BE ABLE TO ACHIEVE WHAT AN INDIVIDUAL VALUES DOING AND BEING

Source: Millennium Ecosystem Assessment

ARROW'S COLOR
Potential for mediation by socioeconomic factors

- Low
- Medium
- High

ARROW'S WIDTH
Intensity of linkages between ecosystem services and human well-being

- Weak
- Medium
- Strong

Ecosystem services support protected areas

PA MANAGEMENT ISSUES ARE HEALTH-RELATED

Habitat destruction opens up opportunities for genetic exchange of viruses, leading to new diseases (the main mechanism for the emergence of new influenza epidemics)



Invasive alien species
can bring new diseases
into a protected area.



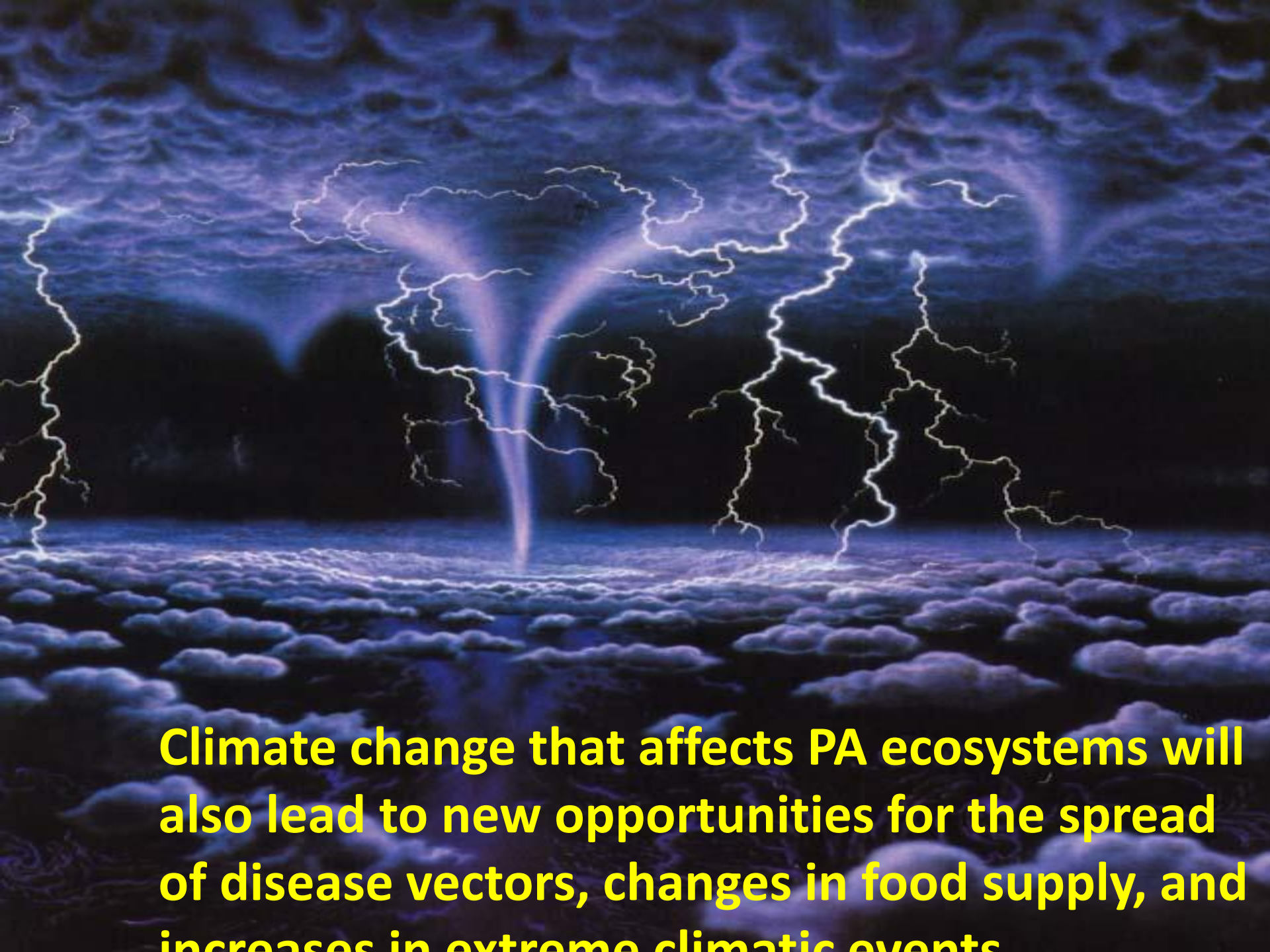


Grazing by domestic animals in PAs can increase the dangers of zoonotic diseases, as well as the spread of animal diseases





Poaching of medicinal plants (such as ginseng) threatens the integrity of protected areas and poaching of bush meat can lead to AIDs.



Climate change that affects PA ecosystems will also lead to new opportunities for the spread of disease vectors, changes in food supply, and increases in extreme climatic events

Losing species from protected areas can lose insights into health. Chimpanzees eat medicinal plants that can provide insights to human diseases.






Protected areas also provide multiple health-related benefits:

PAs maintain healthy ecosystems that help control the spread of disease



Marine PAs enhance fisheries production,
thereby improving nutrition.



An assessment of 55
marine protected
areas found an
average increase in
fish biomass of 446%
(Lester et al. 2009)



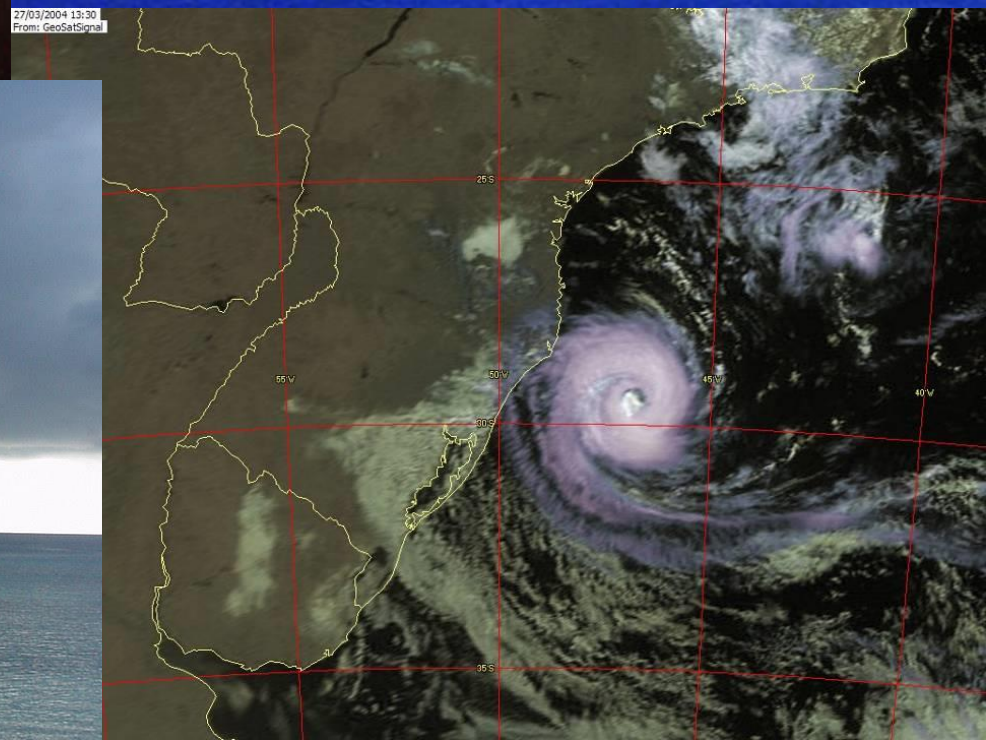
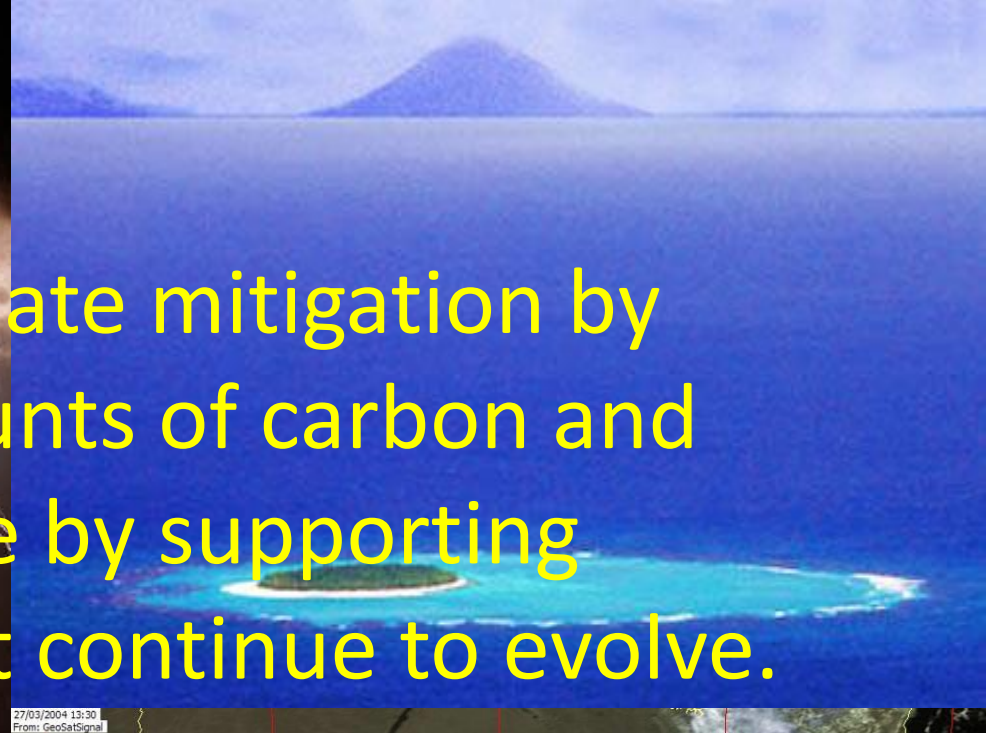
PAs conserve Endangered species that provide multiple health-related benefits. The stomach-brooding frog *Rheobatrachus silus* might still be alive today if PAs had provided suitable habitats and directed management measures to its survival.

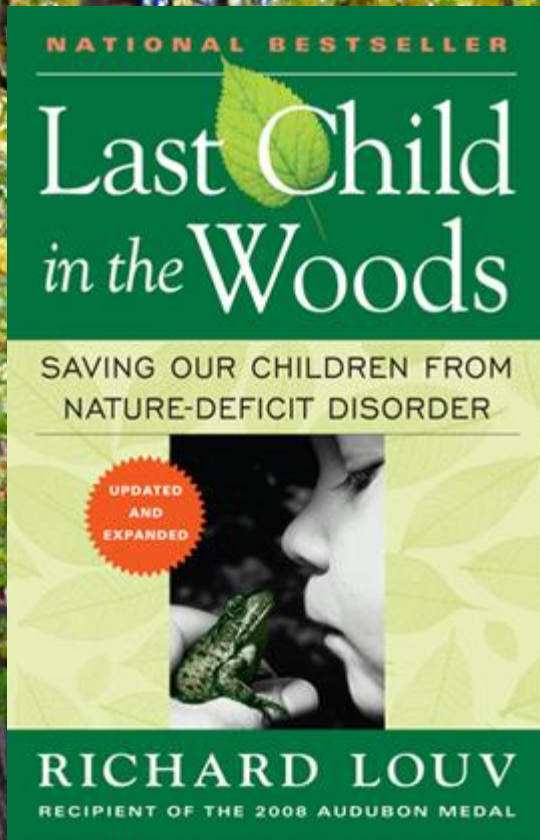


PAs provide multiple water-related services that provide health benefits:

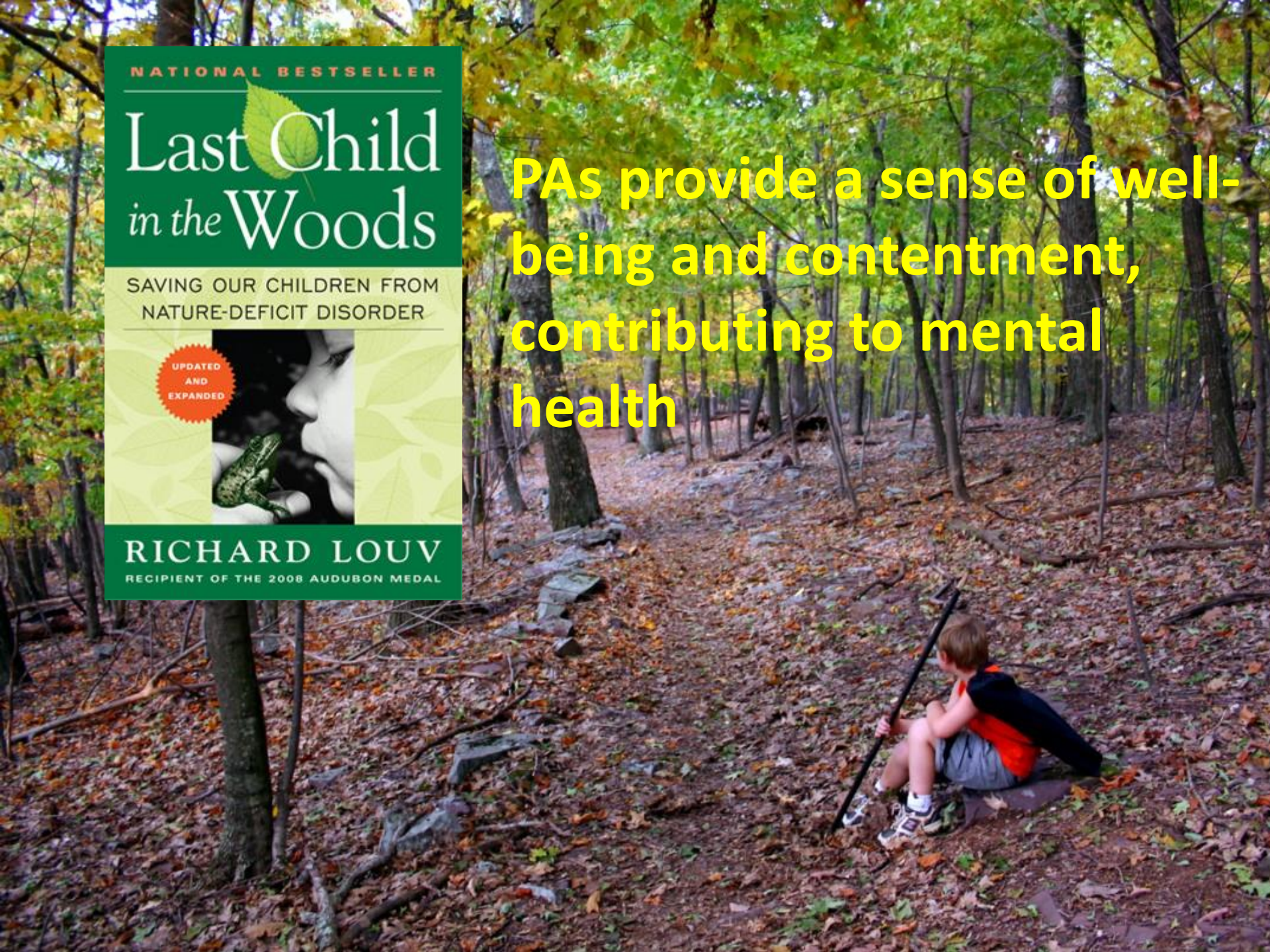
- **Provision of fresh water for drinking, agriculture, etc.**
- **Regulation of floods and extreme weather events;**
- **Purification of wastes, thereby reducing incidence of water-borne diseases;**
- **Delivery of nutrient-rich sediments to flood plains**

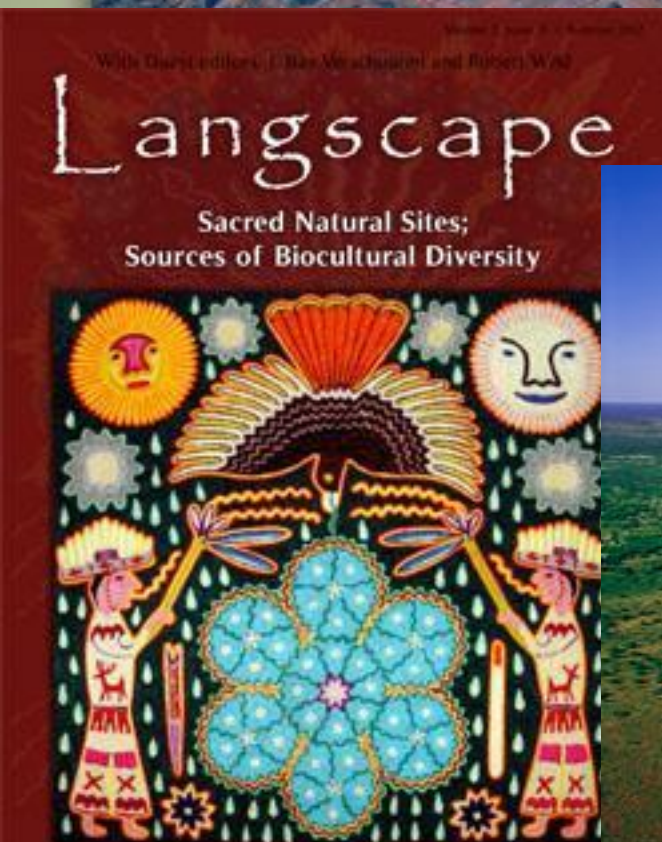
PAs contribute to a climate mitigation by storing significant amounts of carbon and adapt to climate change by supporting diverse ecosystems that continue to evolve.





PAs provide a sense of well-being and contentment, contributing to mental health





**Sacred natural sites underline
the spiritual values of PAs**

NEXT STEPS

1. Provide information to convince health professionals to incorporate protected areas into their portfolio.
2. Facilitate international research on the medicinal species within protected areas.
3. Include health-related issues into the site communications plans.
4. Incorporate special health-related activities for visitors to the PA.
5. Include the full range of health-related issues in the site's management plan.

Panel Members



Carol Ritchie - Chief Executive Europarc Federation.



Lou Sanson - Director General Department of Conservation NZ.



Nomvuselelo "Mvusy" Songelwa - Managing Executive Parks SANPS



Dr Chong-Chun Kim- Executive Director Korea National Parks

Stay connected

For more information on the *Healthy Parks Healthy People* approach visit www.hphpcentral.com

Contribute to the Promise of Sydney at
www.worldparkscongress.org/about/promise_of_sydney



Coming up in Stream 3

Hall 3B1 Home Room, 3.30pm-5pm

Session 3: Working together is better: inspiring global park health partnerships

Charley Room, 3.30pm-5pm

Session 5: Indigenous and local community perspectives on nature and wellbeing

Hordern Room, 3.30pm-5pm

Session 7: One Health: Linking human, animal and ecosystem health 1

