

Location, Location, Location: Are We Putting Marine Protected Areas in the Right Places?

A Lunchtime Debate, Tuesday, Nov 18, 12:15-1:14



Location, Location, Location ...

Dr Jeremy Helson

Fisheries Inshore New Zealand

World Parks Congress, Sydney 2014

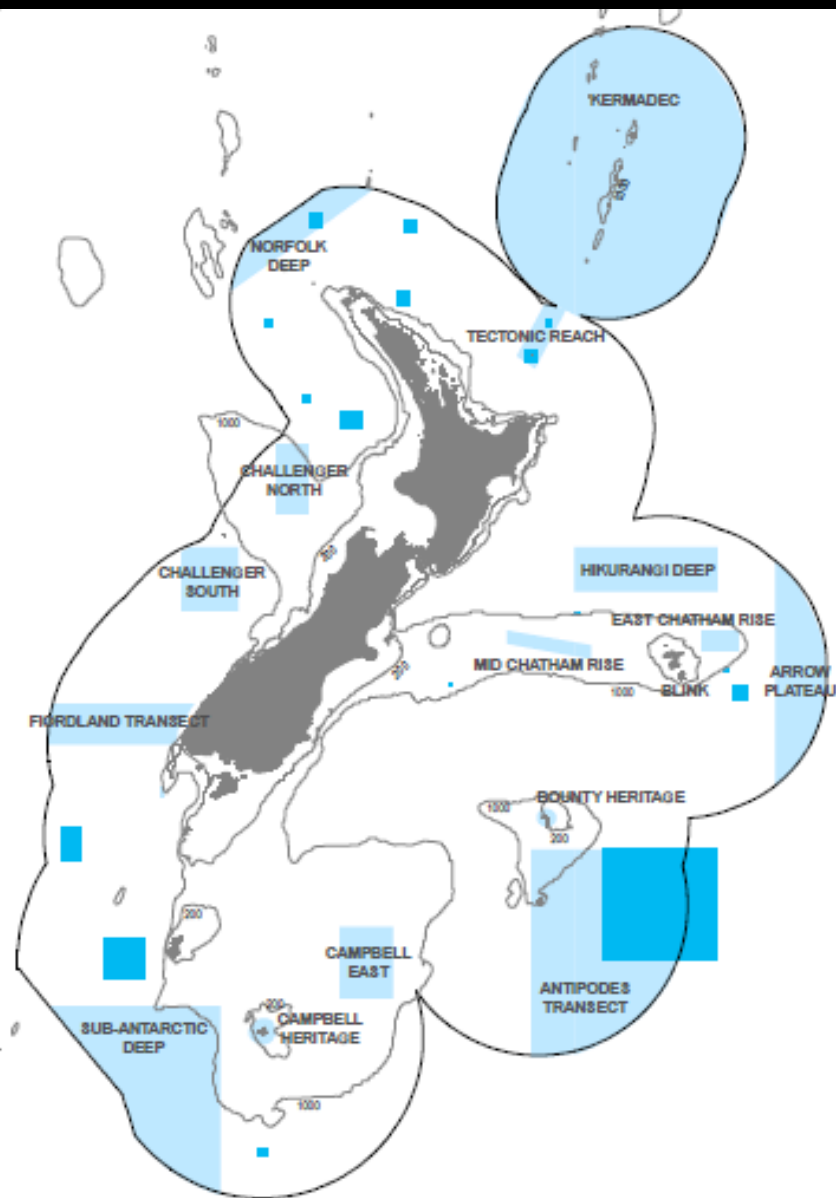


FISHERIES
INSHORE NEW ZEALAND

COMMITTED TO HEALTHY OCEANS; SUSTAINABLE FISHERIES

But first ...

**What do you want to
achieve?**

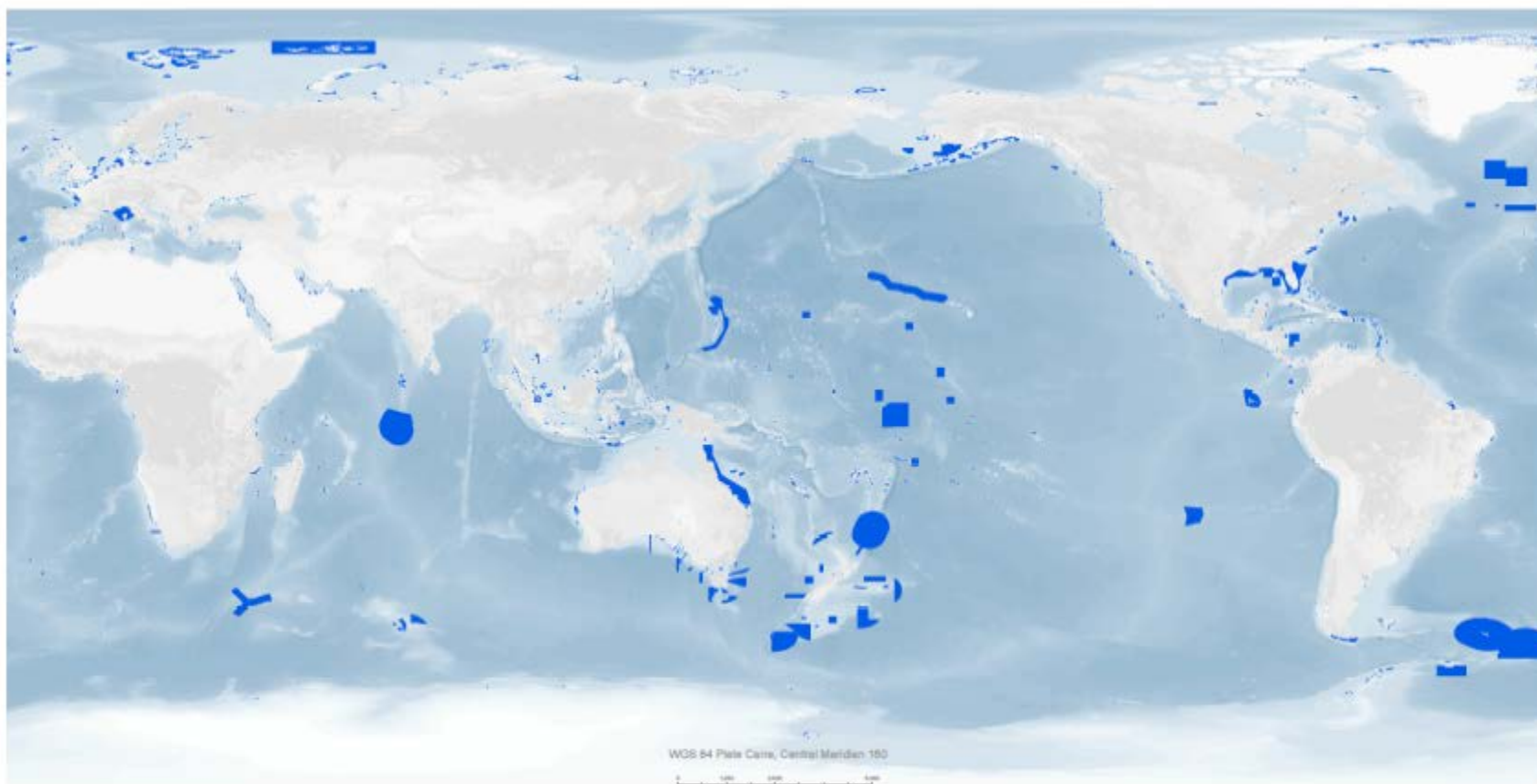


LOCATION OF BENTHIC PROTECTION AREAS AND SEAMOUNT CLOSURES

- EEZ Boundary
- Seamount Closures
- Benthic Protection Areas

Map Compilation: 01 August 2011
 Map Projection: Mercator
 © Deepwater Group Ltd

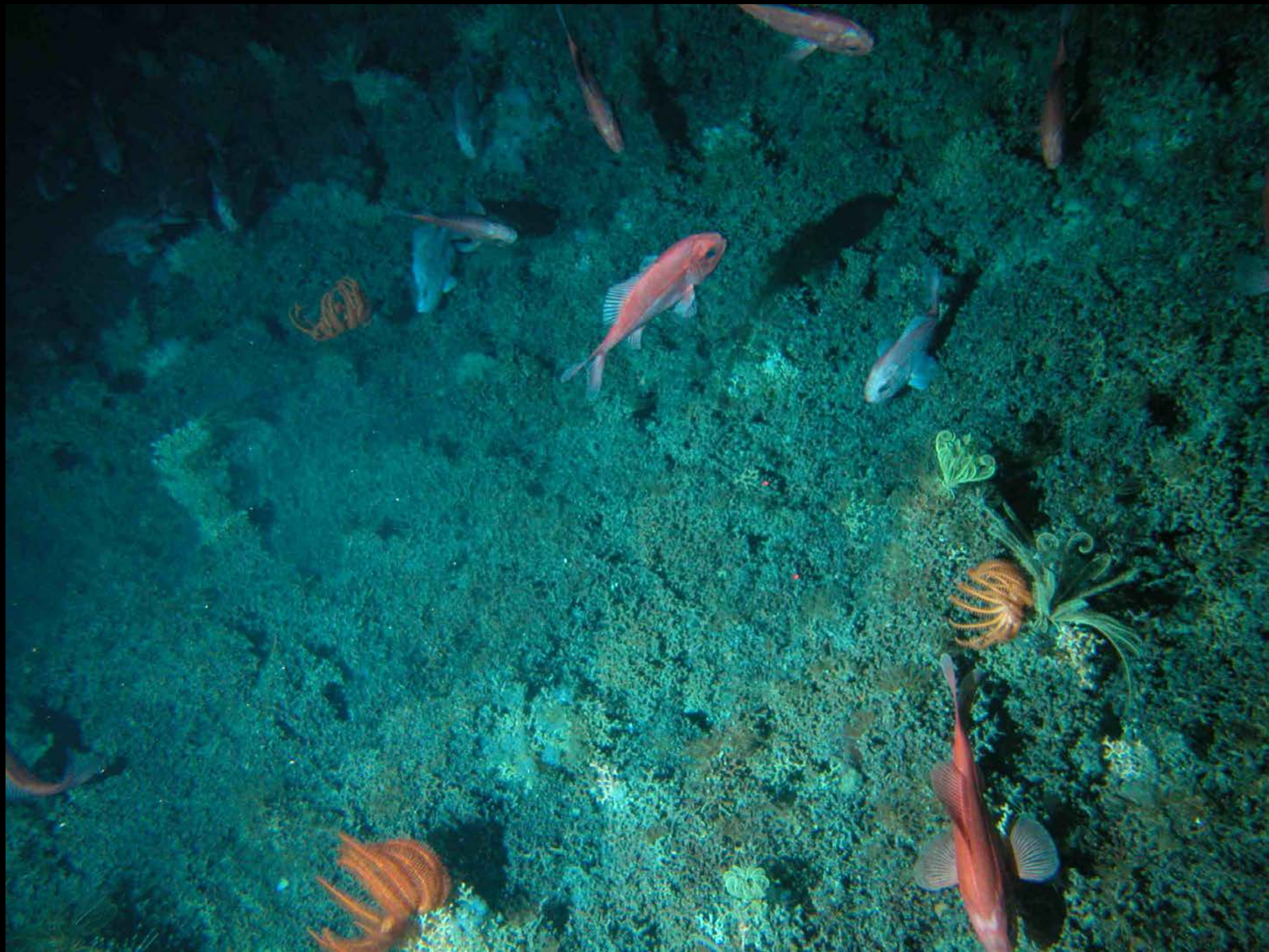
MARINE PROTECTED AREAS



Protecting 2.2% of the Global Ocean

Source: IUCN and UNEP-WCMC (2013). The World Database on Protected Areas (WDPA) Official Map Series: Marine Protected Areas. Series M01. WDPA October 2013 Release.
Map available at: www.protectedplanetoocean.org; WDPA available at www.protectedplanet.net.







“For every complex problem
there is an answer that is clear,
simple, and wrong”

H L Mencken



FISHERIES

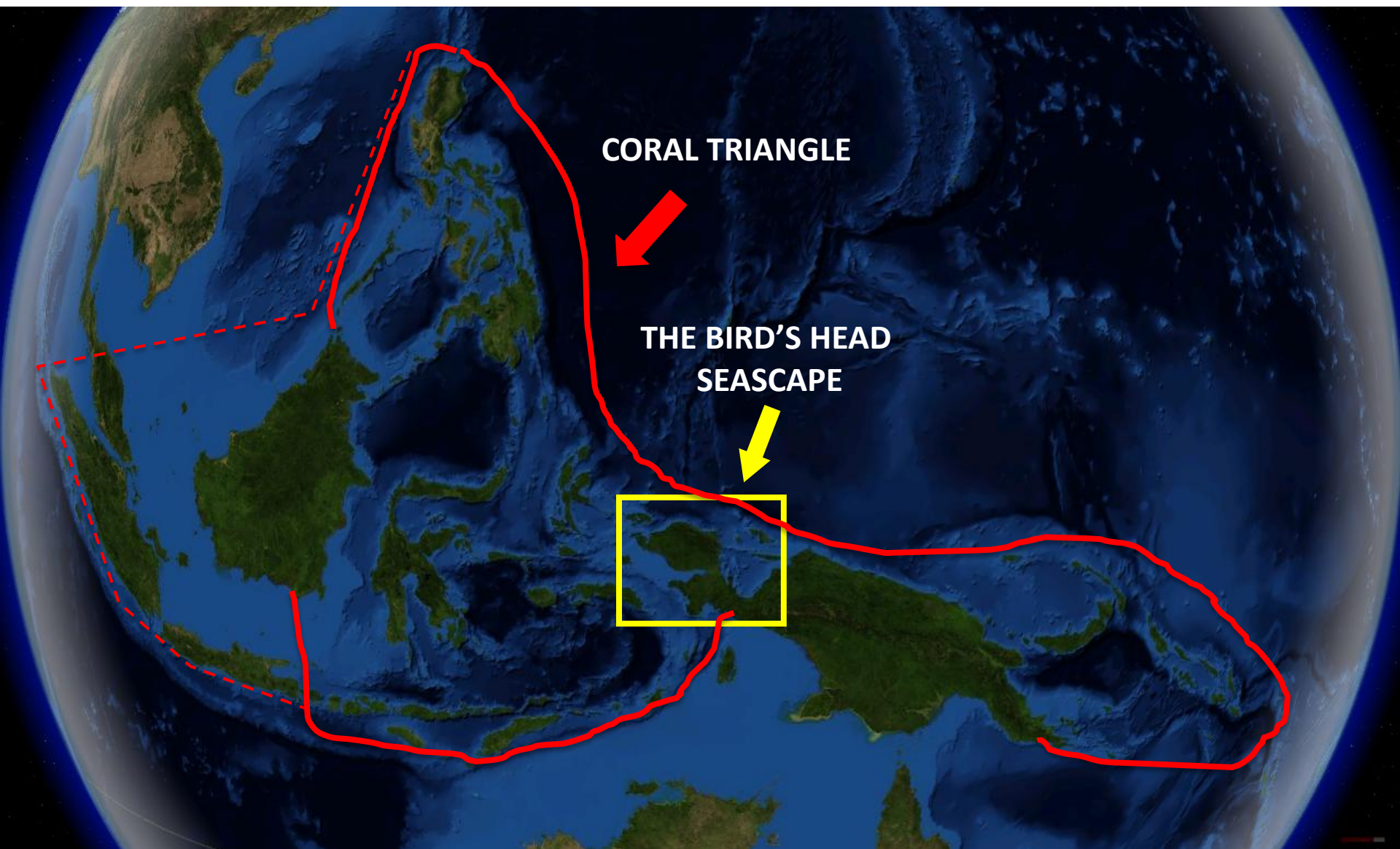
INSHORE NEW ZEALAND

COMMITTED TO HEALTHY OCEANS SUSTAINABLE FISHERIES



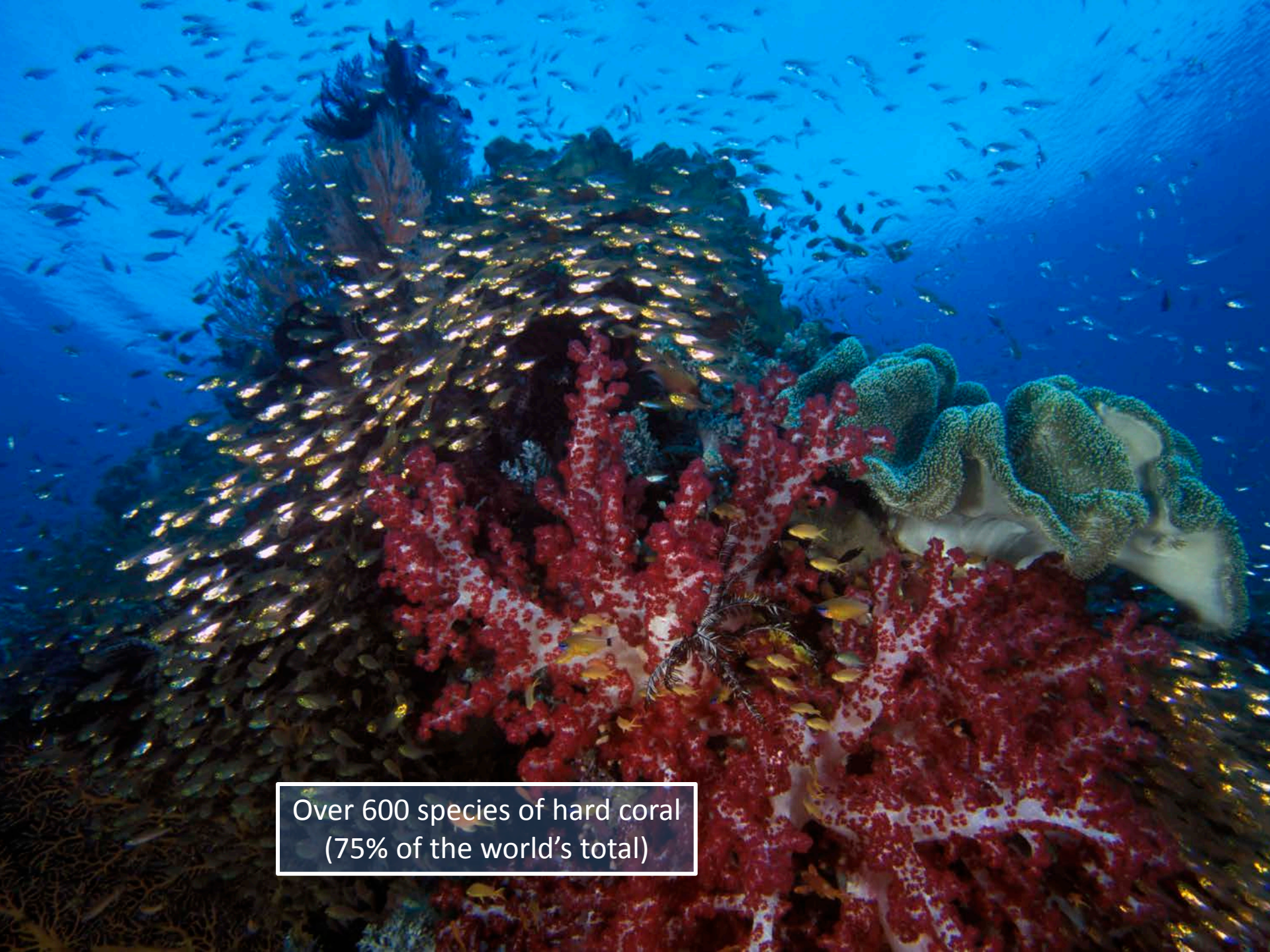
Bird's Head Seascape (BHS) MPAs Networking

Meity Mongdong – Conservation International Indonesia



CORAL TRIANGLE

**THE BIRD'S HEAD
SEASCAPE**



Over 600 species of hard coral
(75% of the world's total)

BIODIVERSITY COMPARISON



Bird's Head Seascape: More than 600 species of hard coral
(over 240 species in the area of a single football field)

1617+ species of fish



Largest Pacific Leatherback Nesting Beach in the World





Critical habitat for endangered and migratory species

Papuan communities heavily dependent upon natural resources for subsistence



Establish an MPA networking is strongly supported by the indigenous community



Both for protecting their resources and also preventing from other damaged conversion



Because....It also has real and immediate threats....



So, any reason for not protecting?

