



WORLD  
RESOURCES  
INSTITUTE

# Improving forest mapping and monitoring in the Congo Basin

*World Parks Congress, USAID-CARPE side-event, 14 November 2014*

**Crystal Davis, Senior Manager, Global Forest Watch**



## Need for information for improved forest management

### Major obstacles to good forest management:

- Lack of adequate information
- Low capacity to apply info to action on ground
- Little coordination in land-use planning
- Little to no monitoring of how resources are used



# In the beginning...

GLOBAL  
FOREST  
WATCH

FOREST CHANGE

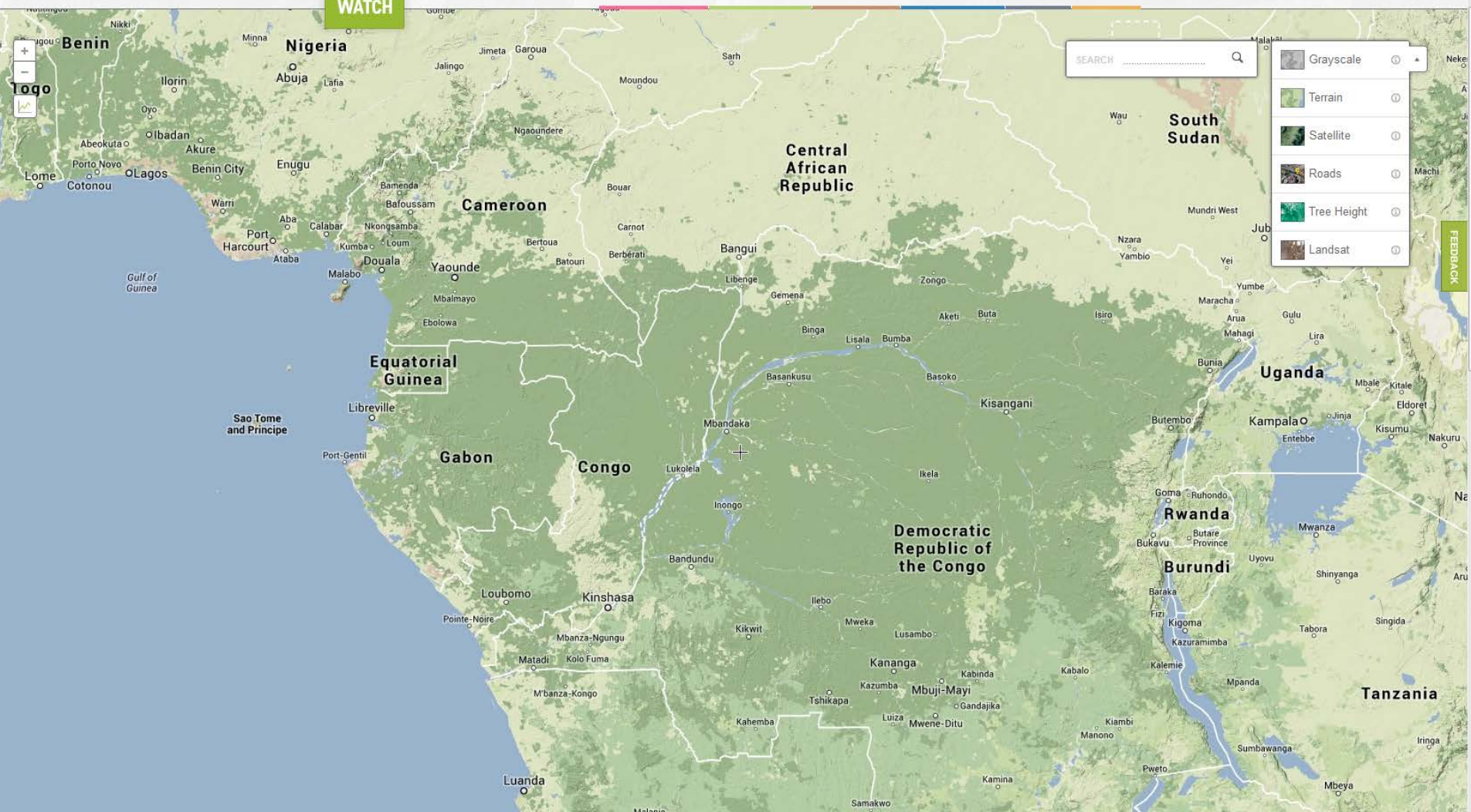
FOREST COVER

FOREST USE

CONSERVATION

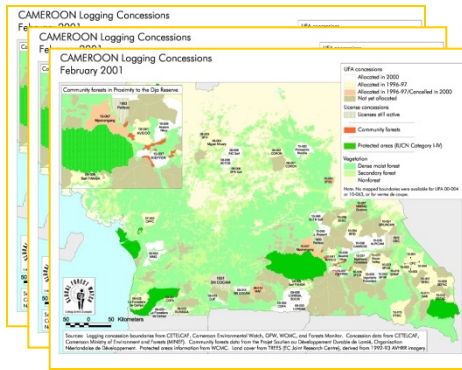
PEOPLE

STORIES





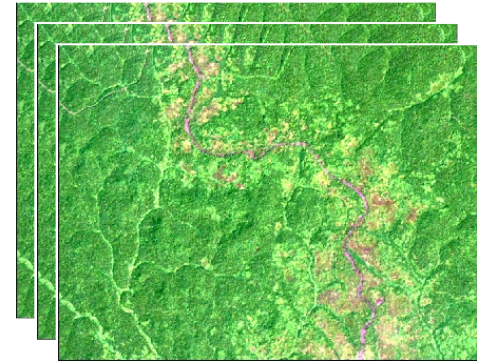
# Global Forest Watch Approach



Land use  
allocation

**Forest Atlas**

+



Forest use  
information



**Land use planning**

**Forest monitoring**





# Improved information

GLOBAL  
FOREST  
WATCH

FOREST CHANGE

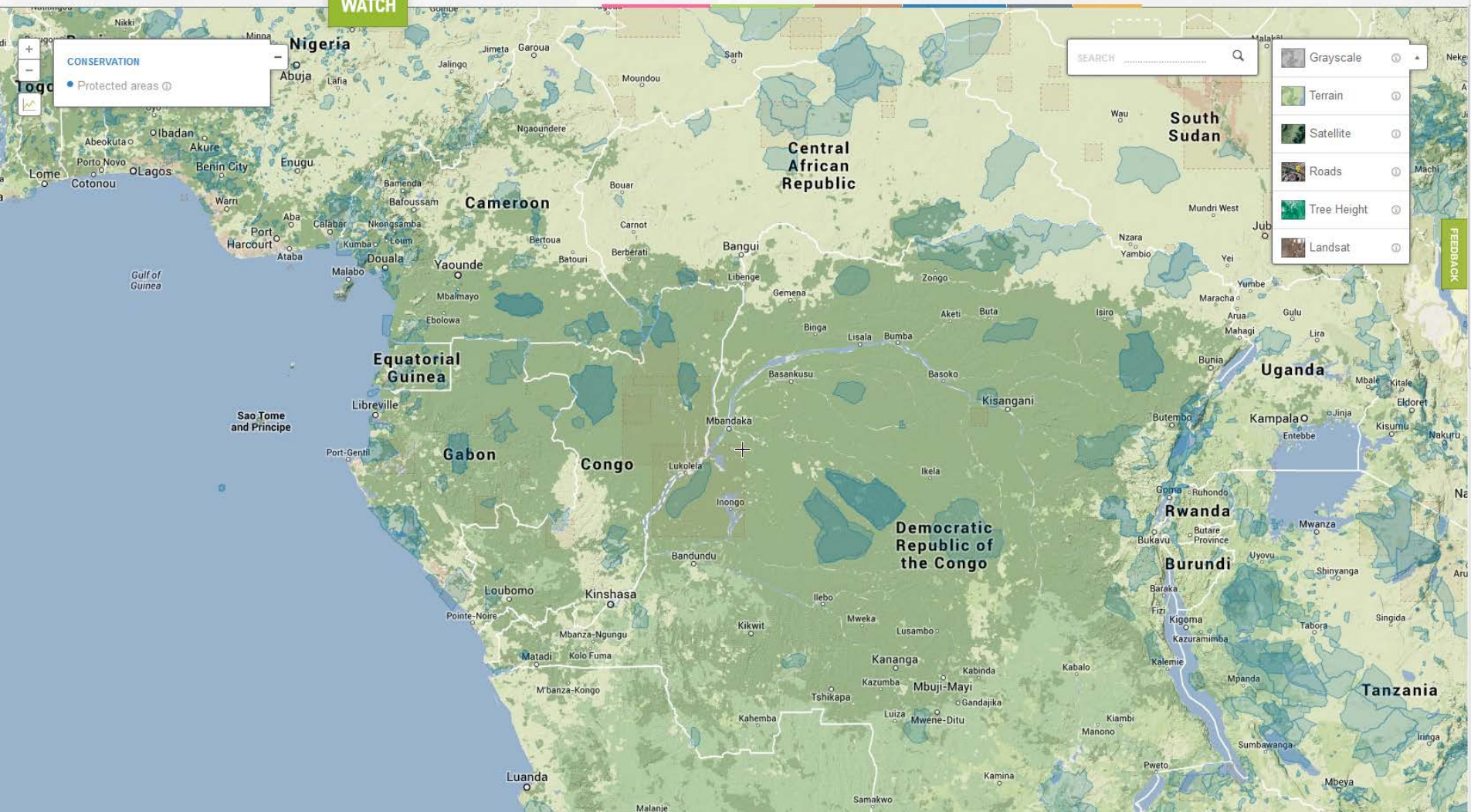
FOREST COVER

FOREST USE

CONSERVATION

PEOPLE

STORIES







# Improved information

GLOBAL  
FOREST  
WATCH

FOREST CHANGE

FOREST COVER

FOREST USE

CONSERVATION

PEOPLE

STORIES

SEARCH

Grayscale

Terrain

Satellite

Roads

Tree Height

Landsat

FOREST USE

Oil palm

CONSERVATION

Protected areas

Nigeria

Abuja

Lafia

Enugu

Cotonou

Warri

Port Harcourt

Aba

Calabar

Ataba

Malabo

Libreville

Port-Gentil

Sao Tome and Principe

Equatorial Guinea

Gabon

Yaounde

Bamenda

Bafoussam

Nkongsamba

Kumba

Loum

Malabo

Ebolowa

Yaounde

Bamenda

Bafoussam

Nkongsamba

Cameroon

Yaounde

Bamenda

Bafoussam

Nkongsamba

Kumba

Loum

Malabo

Ebolowa

Yaounde

Bamenda

Bafoussam

Nkongsamba

Kumba

Loum

Malabo

Ebolowa

Yaounde

Bamenda

Bafoussam

Nkongsamba

Kumba

Loum

Central African Republic

Yaounde

Bamenda

Bafoussam

Nkongsamba

Kumba

Loum

Malabo

Ebolowa

Yaounde

Bamenda

Bafoussam

Nkongsamba

Kumba

Loum

Malabo

Ebolowa

Yaounde

Bamenda

Bafoussam

Nkongsamba

Kumba

Loum

Central African Republic

Yaounde

Bamenda

Bafoussam

Nkongsamba

Kumba

Loum

Malabo

Ebolowa

Yaounde

Bamenda

Bafoussam

Nkongsamba

Kumba

Loum

Malabo

Ebolowa

Yaounde

Bamenda

Bafoussam

Nkongsamba

Kumba

Loum

Central African Republic

Yaounde

Bamenda

Bafoussam

Nkongsamba

Kumba

Loum

Malabo

Ebolowa

Yaounde

Bamenda

Bafoussam

Nkongsamba

Kumba

Loum

Malabo

Ebolowa

Yaounde

Bamenda

Bafoussam

Nkongsamba

Kumba

Loum

Central African Republic

Yaounde

Bamenda

Bafoussam

Nkongsamba

Kumba

Loum

Malabo

Ebolowa

Yaounde

Bamenda

Bafoussam

Nkongsamba

Kumba

Loum

Malabo

Ebolowa

Yaounde

Bamenda

Bafoussam

Nkongsamba

Kumba

Loum

Central African Republic

Yaounde

Bamenda

Bafoussam

Nkongsamba

Kumba

Loum

Malabo

Ebolowa

Yaounde

Bamenda

Bafoussam

Nkongsamba

Kumba

Loum

Malabo

Ebolowa

Yaounde

Bamenda

Bafoussam

Nkongsamba

Kumba

Loum

Central African Republic

Yaounde

Bamenda

Bafoussam

Nkongsamba

Kumba

Loum

Malabo

Ebolowa

Yaounde

Bamenda

Bafoussam

Nkongsamba

Kumba

Loum

Malabo

Ebolowa

Yaounde

Bamenda

Bafoussam

Nkongsamba

Kumba

Loum

Central African Republic

Yaounde

Bamenda

Bafoussam

Nkongsamba

Kumba

Loum

Malabo

Ebolowa

Yaounde

Bamenda

Bafoussam

Nkongsamba

Kumba

Loum

Malabo

Ebolowa

Yaounde

Bamenda

Bafoussam

Nkongsamba

Kumba

Loum

Central African Republic

Yaounde

Bamenda

Bafoussam

Nkongsamba

Kumba

Loum

Malabo

Ebolowa

Yaounde

Bamenda

Bafoussam

Nkongsamba

Kumba

Loum

Malabo

Ebolowa

Yaounde

Bamenda

Bafoussam

Nkongsamba

Kumba

Loum





# Improved information

GLOBAL  
FOREST  
WATCH

FOREST CHANGE

FOREST COVER

FOREST USE

CONSERVATION

PEOPLE

STORIES

SEARCH

Grayscale

Terrain

Satellite

Roads

Tree Height

Landsat

FOREST USE

Oil palm

Logging

CONSERVATION

Protected areas

Nigeria

Abuja

Lafia

Enugu

Port Harcourt

Ataba

Calabar

Kumbungu

Malabo

Yaounde

Mbamayo

Eloundou

Libreville

Port-Gentil

Sao Tome and Principe

Equatorial Guinea

Cameroon

Bamenda

Bafoussam

Nkongsamba

Leu

Yaounde

Mbamayo

Eloundou

Libreville

Port-Gentil

Sao Tome and Principe

Equatorial Guinea

Cameroon

Bamenda

Bafoussam

Nkongsamba

Leu

Yaounde

Mbamayo

Eloundou

Libreville

Port-Gentil

Sao Tome and Principe

Equatorial Guinea

Cameroon

Bamenda

Bafoussam

Nkongsamba

Leu

Yaounde

Mbamayo

Eloundou

Libreville

Port-Gentil

Sao Tome and Principe

Equatorial Guinea

Cameroon

Bamenda

Bafoussam

Nkongsamba

Leu

Yaounde

Mbamayo

Eloundou

Libreville

Port-Gentil

Sao Tome and Principe

Equatorial Guinea

Cameroon

Bamenda

Bafoussam

Nkongsamba

Leu

Yaounde

Mbamayo

Eloundou

Libreville

Port-Gentil

Sao Tome and Principe

Equatorial Guinea

Cameroon

Bamenda

Bafoussam

Nkongsamba

Leu

Yaounde

Mbamayo

Eloundou

Libreville

Port-Gentil

Sao Tome and Principe

Equatorial Guinea

Cameroon

Bamenda

Bafoussam

Nkongsamba

Leu

Yaounde

Mbamayo

Eloundou

Libreville

Port-Gentil

Sao Tome and Principe

Equatorial Guinea

Cameroon

Bamenda

Bafoussam

Nkongsamba

Leu

Yaounde

Mbamayo

Eloundou

Libreville

Port-Gentil

Sao Tome and Principe

Equatorial Guinea

Cameroon

Bamenda

Bafoussam

Nkongsamba

Leu

Yaounde

Mbamayo

Eloundou

Libreville

Port-Gentil

Sao Tome and Principe

Equatorial Guinea

Cameroon

Bamenda

Bafoussam

Nkongsamba

Leu

Yaounde

Mbamayo

Eloundou

Libreville

Port-Gentil

Sao Tome and Principe

Equatorial Guinea

Cameroon

Bamenda

Bafoussam

Nkongsamba

Leu

Yaounde

Mbamayo

Eloundou

Libreville

Port-Gentil

Sao Tome and Principe

Equatorial Guinea

Cameroon

Bamenda

Bafoussam

Nkongsamba

Leu

Yaounde

Mbamayo

Eloundou

Libreville

Port-Gentil

Sao Tome and Principe

Equatorial Guinea

Cameroon

Bamenda

Bafoussam

Nkongsamba

Leu

Yaounde

Mbamayo

Eloundou

Libreville

Port-Gentil

Sao Tome and Principe

Equatorial Guinea

Cameroon

Bamenda

Bafoussam

Nkongsamba

Leu

Yaounde

Mbamayo

Eloundou

Libreville

Port-Gentil

Sao Tome and Principe

Equatorial Guinea

Cameroon

Bamenda

Bafoussam

Nkongsamba

Leu

Yaounde

Mbamayo

Eloundou

Libreville

Port-Gentil

Sao Tome and Principe

Equatorial Guinea

Cameroon

Bamenda

Bafoussam

Nkongsamba

Leu

Yaounde

Mbamayo

Eloundou

Libreville

Port-Gentil

Sao Tome and Principe

Equatorial Guinea

Cameroon

Bamenda

Bafoussam

Nkongsamba

Leu

Yaounde

Mbamayo

Eloundou

Libreville

Port-Gentil

Sao Tome and Principe

Equatorial Guinea

Cameroon

Bamenda

Bafoussam

Nkongsamba

Leu

Yaounde

Mbamayo

Eloundou

Libreville

Port-Gentil

Sao Tome and Principe

Equatorial Guinea

Cameroon

Bamenda

Bafoussam

Nkongsamba

Leu

Yaounde

Mbamayo

Eloundou

Libreville

Port-Gentil

Sao Tome and Principe

Equatorial Guinea

Cameroon

Bamenda

Bafoussam

Nkongsamba

Leu

Yaounde

Mbamayo

Eloundou

Libreville

Port-Gentil

Sao Tome and Principe

Equatorial Guinea

Cameroon

Bamenda

Bafoussam

Nkongsamba

Leu

Yaounde

Mbamayo

Eloundou

Libreville

Port-Gentil

Sao Tome and Principe

Equatorial Guinea

Cameroon

Bamenda

Bafoussam

Nkongsamba

Leu

Yaounde

Mbamayo

Eloundou

Libreville

Port-Gentil

Sao Tome and Principe

Equatorial Guinea

Cameroon

Bamenda

Bafoussam

Nkongsamba

Leu

Yaounde

Mbamayo

Eloundou

Libreville

Port-Gentil

Sao Tome and Principe

Equatorial Guinea

Cameroon

Bamenda

Bafoussam

Nkongsamba

Leu

Yaounde

Mbamayo

Eloundou

Libreville

Port-Gentil

Sao Tome and Principe

Equatorial Guinea

Cameroon

Bamenda

Bafoussam

Nkongsamba









# Global context

GLOBAL  
FOREST  
WATCH

FOREST CHANGE

FOREST COVER

FOREST USE

CONSERVATION

PEOPLE

STORIES

SEARCH

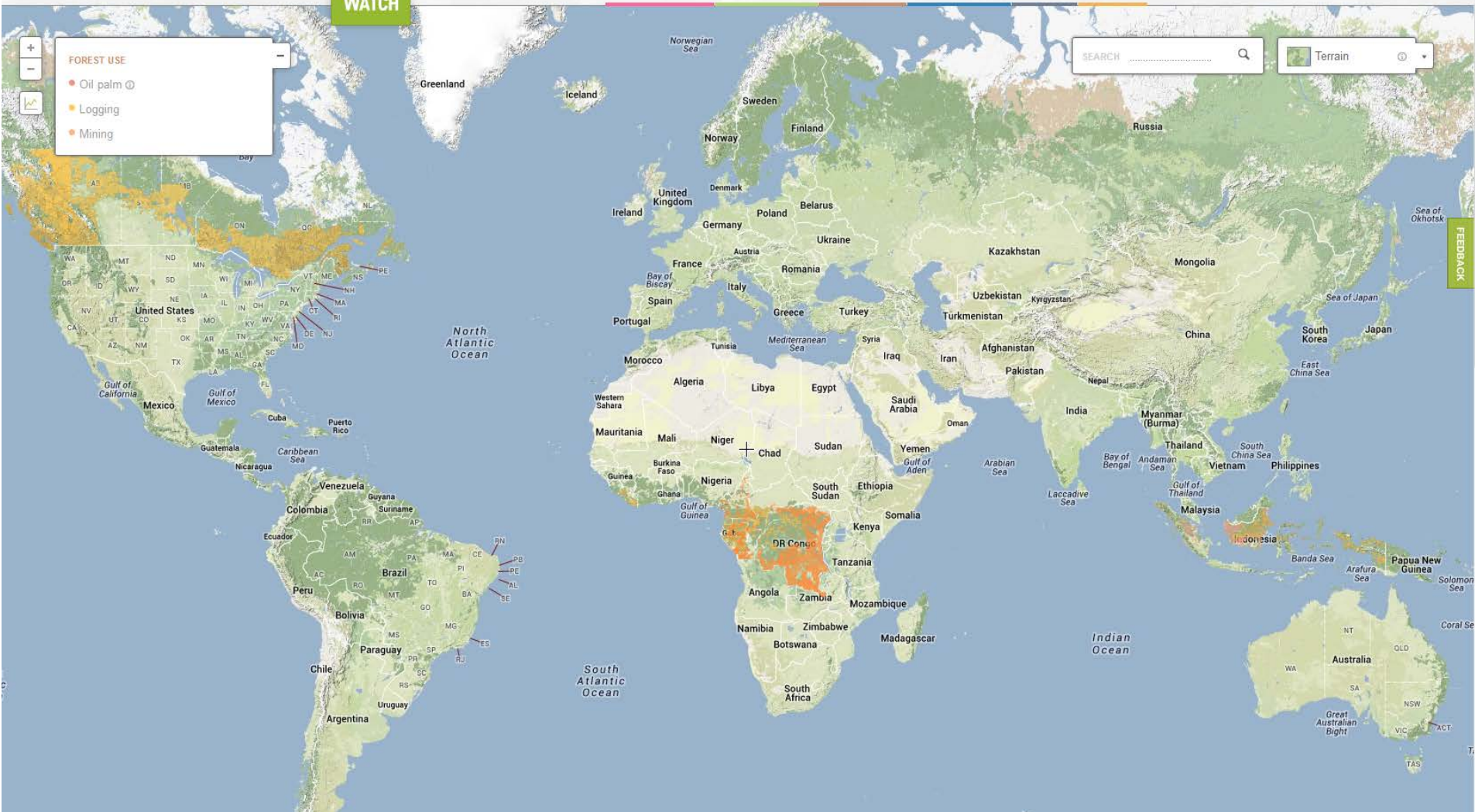
Terrain ☐

FOREST USE

Oil palm

Logging

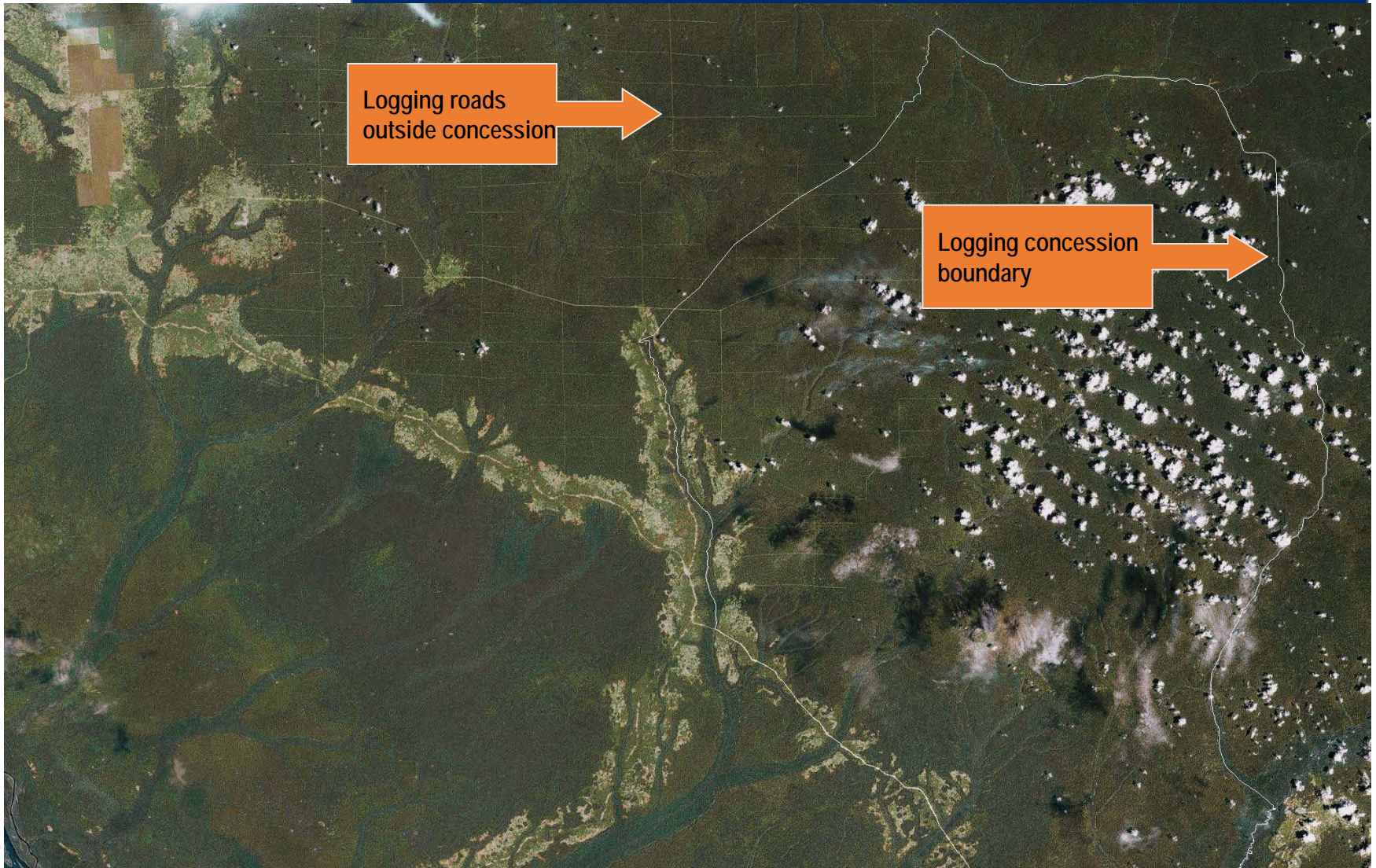
Mining



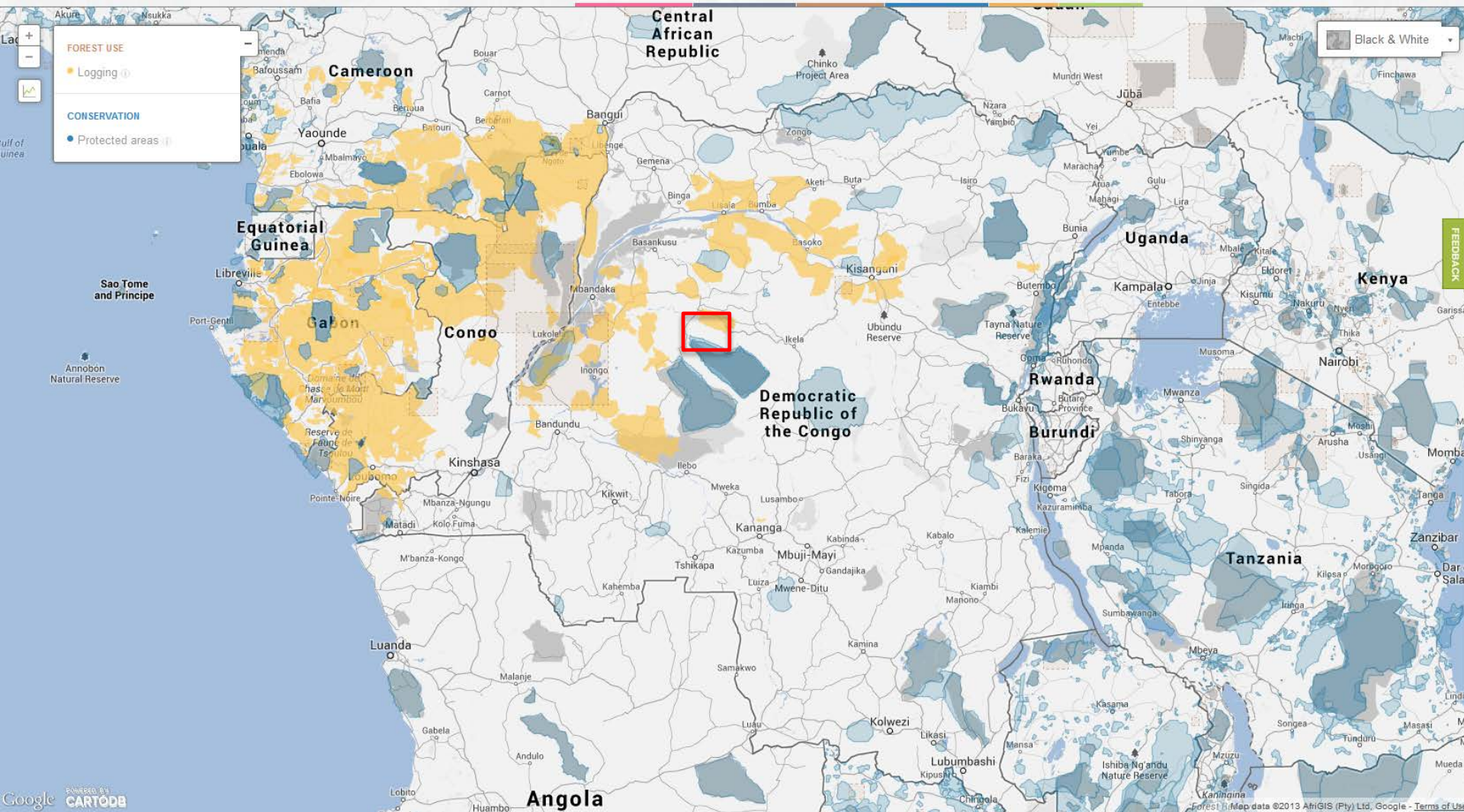


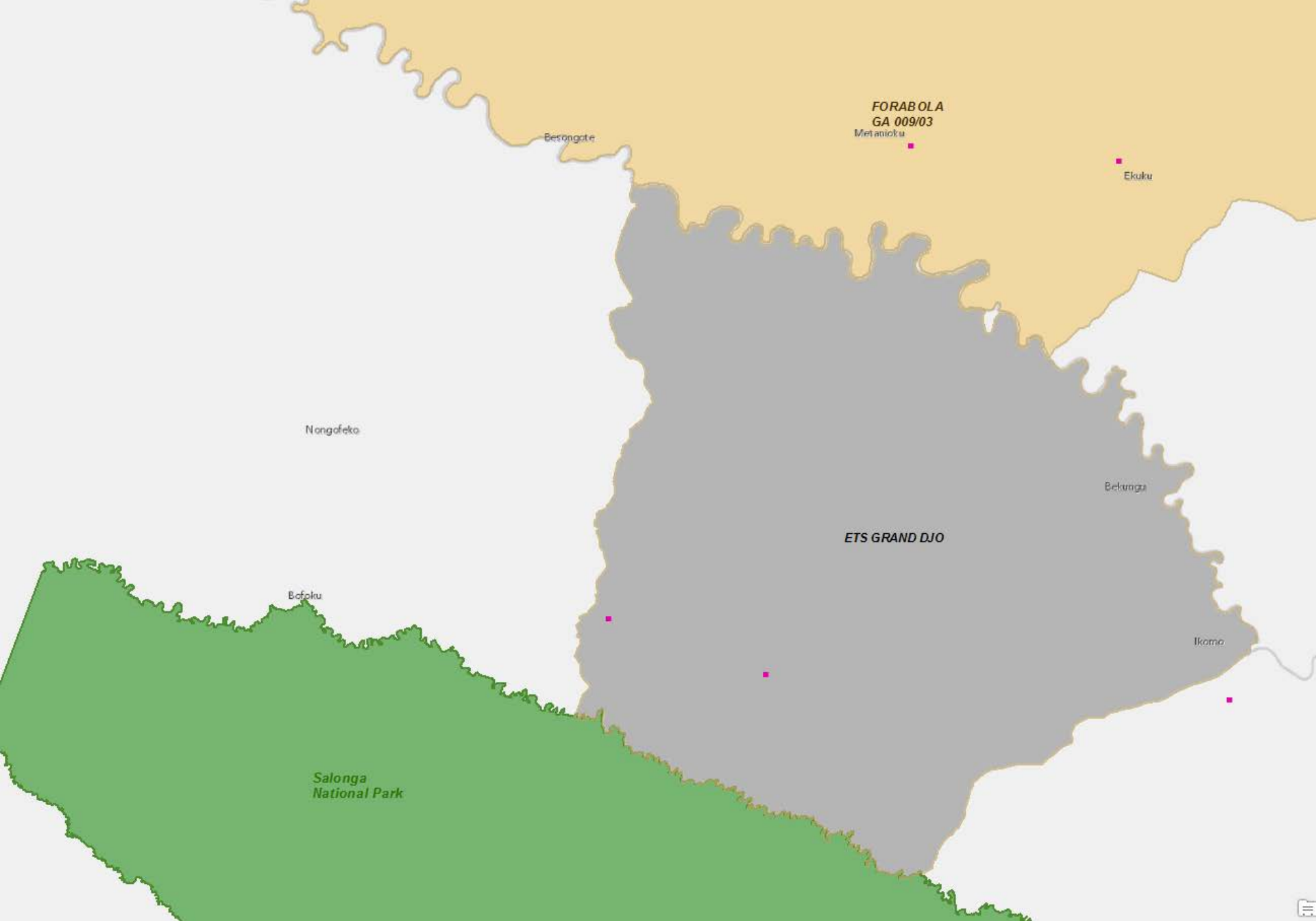


# Monitoring

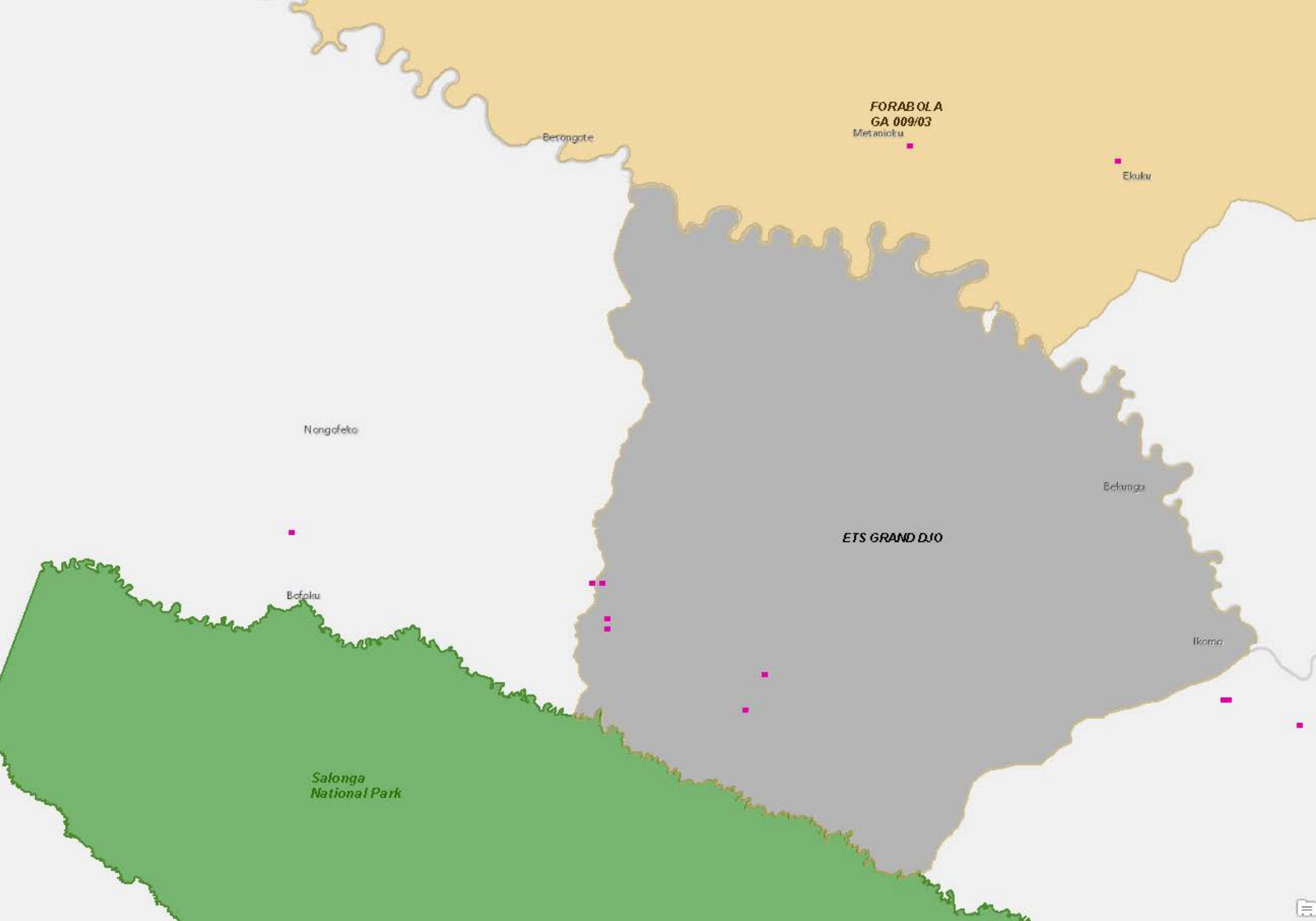


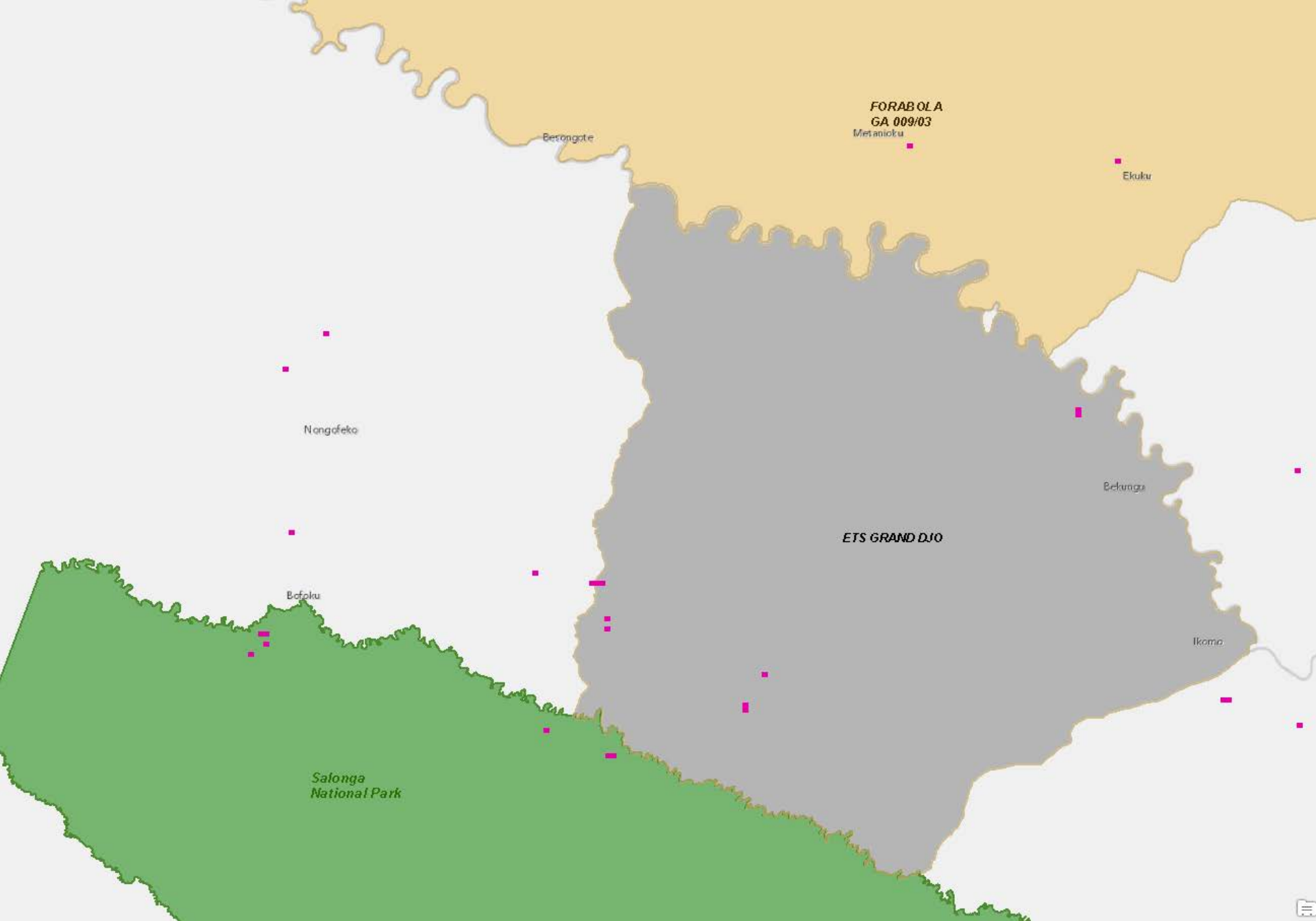




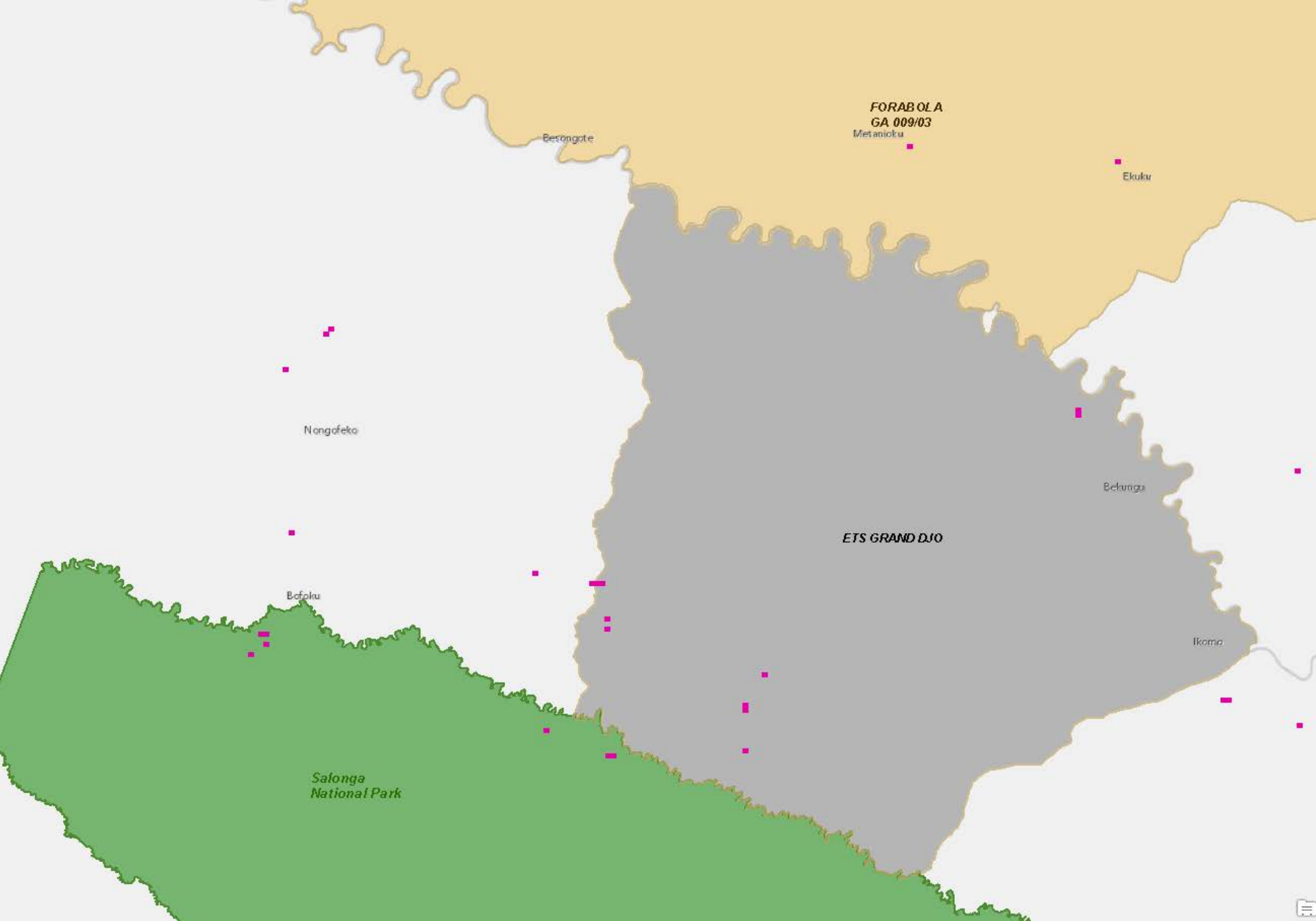












May 2013



# Impact

## Forest Atlas of Gabon

Ministry of Forest, Environment and  
Protection of Natural Resources

[About](#)[Download Data](#)[Sources](#)[Print](#)[English](#)[Français](#)

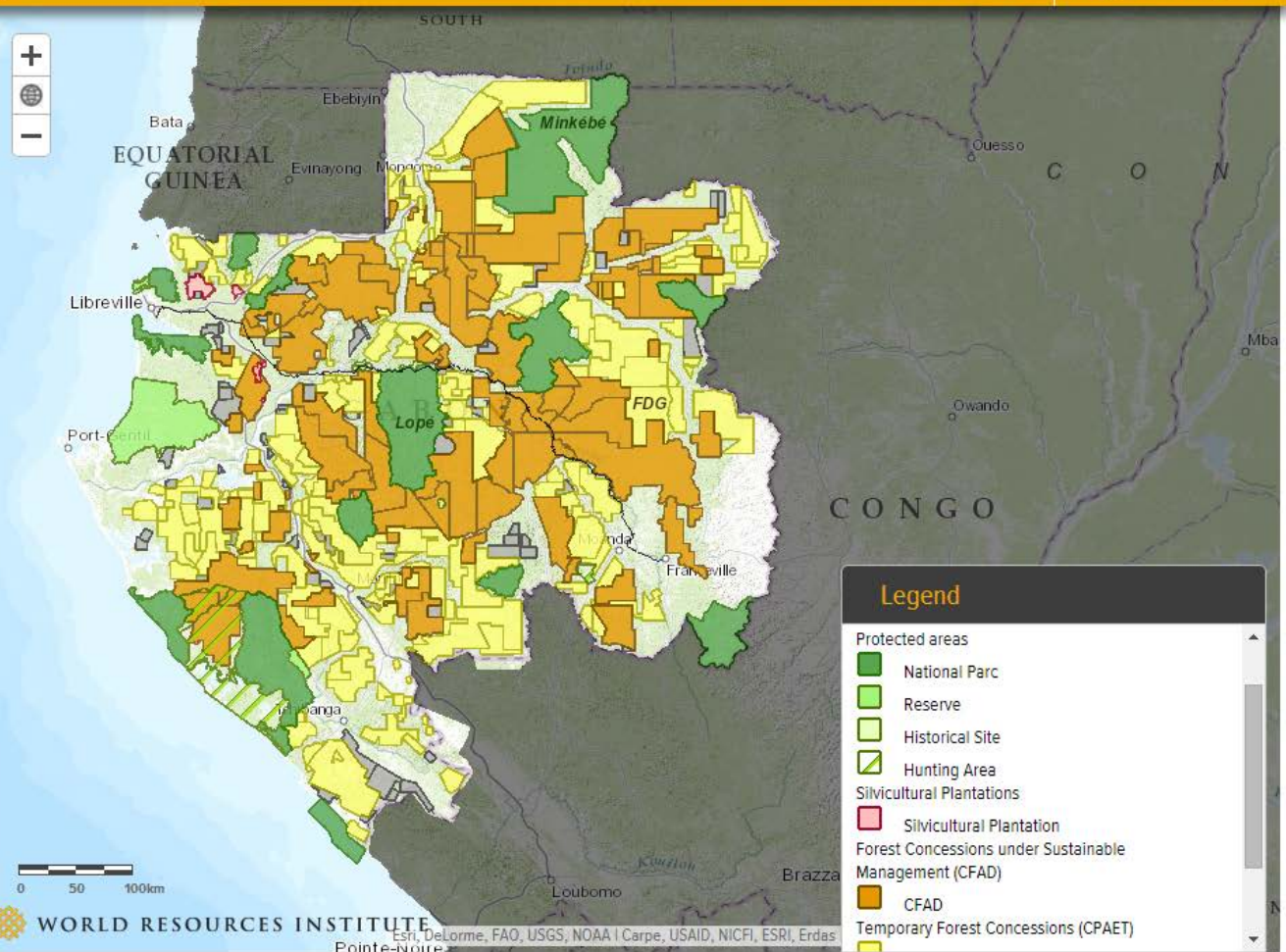
Layers

Basemap

Select All

Clear All

- ☒ Railroad  
+ transparency -
- ☐ Mining areas
- ☒ Protected areas  
+ transparency -
- ☒ Silvicultural Plantations  
+ transparency -
- ☒ Forest Concessions under Sustainable Management (CFAD)  
+ transparency -
- ☒ Temporary Forest Concessions (CPAET)  
+ transparency -
- ☒ Other Logging Permits (PHA)  
+ transparency -



### Legend

#### Protected areas

- National Parc
- Reserve
- Historical Site
- Hunting Area

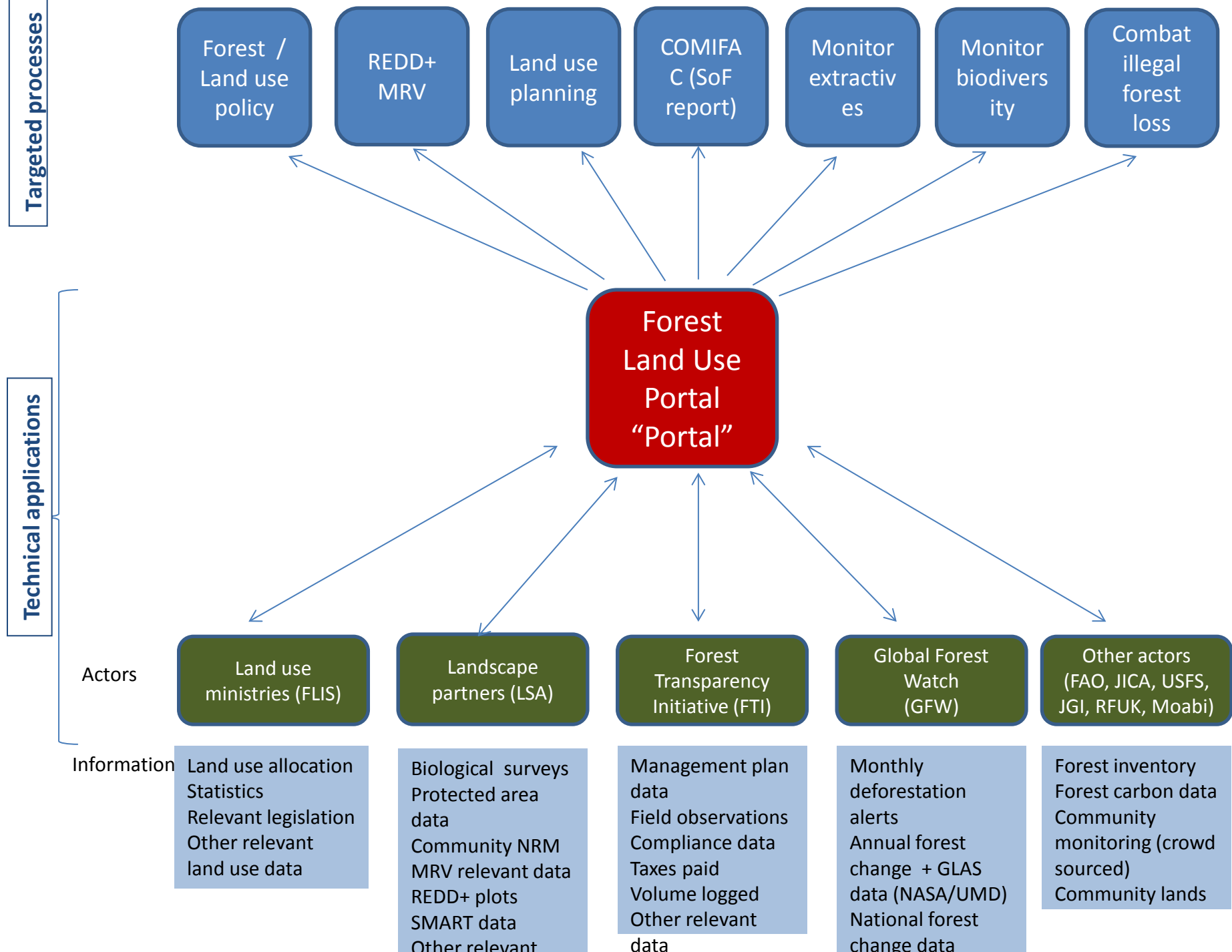
#### Silvicultural Plantations

- Silvicultural Plantation

#### Forest Concessions under Sustainable Management (CFAD)

- CFAD
- Temporary Forest Concessions (CPAET)







**GLOBAL  
FOREST  
WATCH  
2.0**

**Better forest  
information.  
Better forest  
management.**

Photo: Ollivier Girard/CIFOR



# Thank You!

