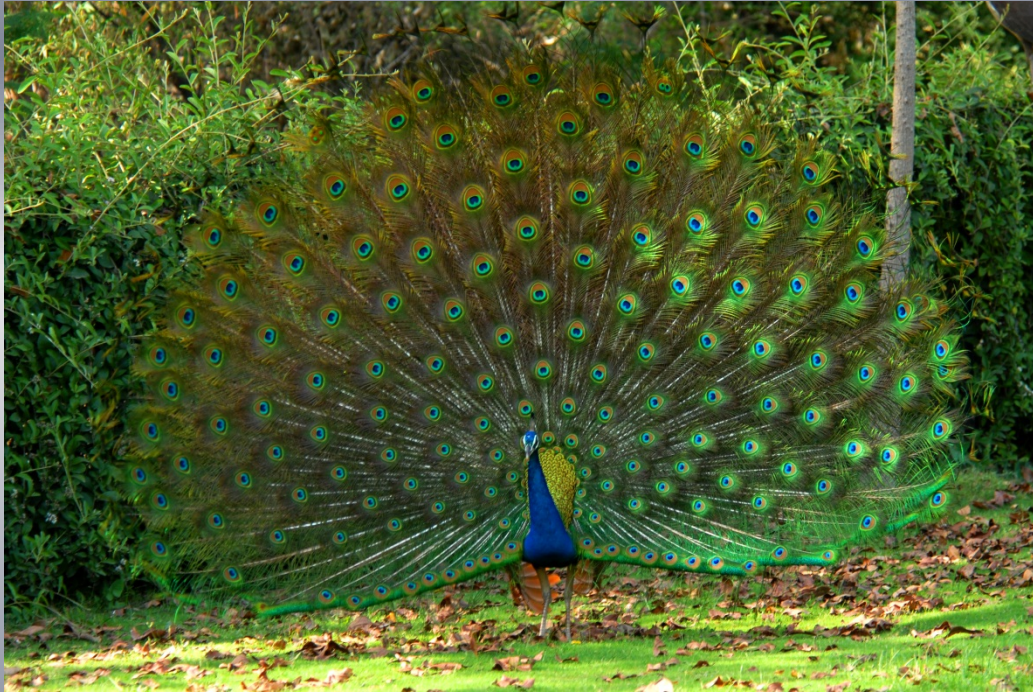


# Shifting the Goal Post

## The World Bank / GEF Journey in Conservation



WPC 2014 | Sydney  
**Anupam Joshi**  
The World Bank  
New Delhi, India

# Conservation History

**Species centric**



# Conservation History

**Institution centric  
FREE Project**





# Conservation History



**Sector centric  
forestry/watershed projects**



# Conservation History

**Community centric  
Integrated Conservation Development  
Projects**



# Conservation History

**Landscape based conservation approaches**





# Conservation History



**Biodiversity & Rural  
Livelihoods  
Ecosystem Services  
projects**

# Outcomes of the journey

- Innovating Institutional Arrangements
  - Park/Project Society; integrated in Wildlife (Protection) Act – all Tiger Reserves have this society/Foundation at the center of management
- Introducing Scientific Measurement and Management
  - PA Management Scoring – Management Effectiveness and Evaluation
- Beyond PAs – the Landscape Approach to Conservation
  - Regional Planning and convergence



# Outcomes seen

- The co-management of the Park resulted in improved habitat conditions, stable and/or increasing wildlife populations, enhanced visitor experience and park's ownership by the people
- National laws and policies were amended to incorporate the new approaches of establishing Societies at the Park Management level
- Conservation leadership was developed and demonstrated and community ownership of PA resources is amplified

# Lessons learnt

- Conservation partnerships and community involvement are prerequisites in meeting the challenges and demands of PAs
- Evidence gathered through scientifically designed performance assessment tool allows room for risk taking
- Expanding the reach of conservation initiatives beyond the PA boundary is essential for realizing long term conservation goals



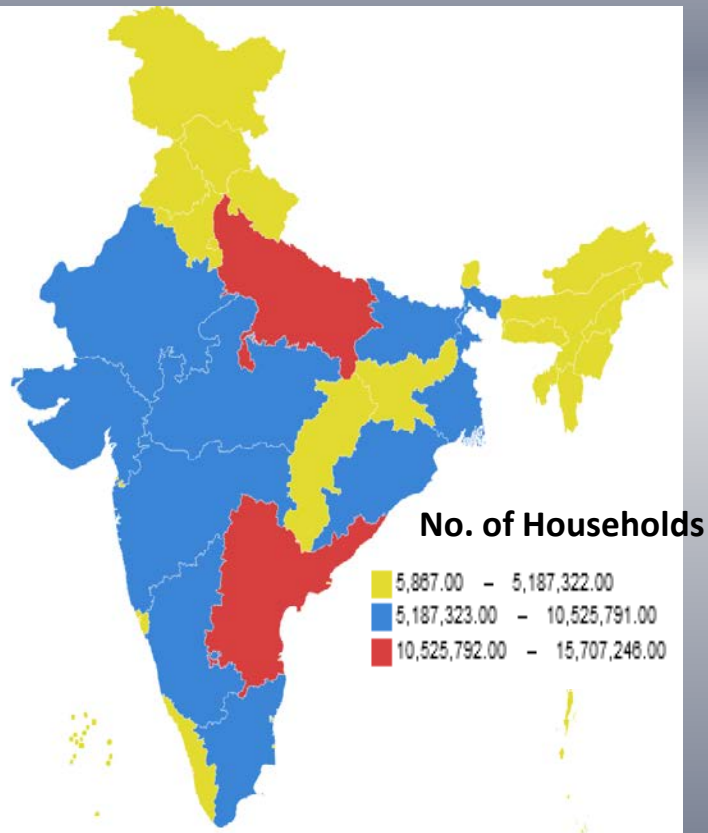
# New Generation Challenges are Emerging

- Poverty – Natural Resource linkages stretched
- Forest cover more or less stable but forest quality degrading rapidly
- Investment prioritization difficult as ecosystem services measurements and valuations are inadequate

# Dependence on fire wood

(Source: 2011 census)

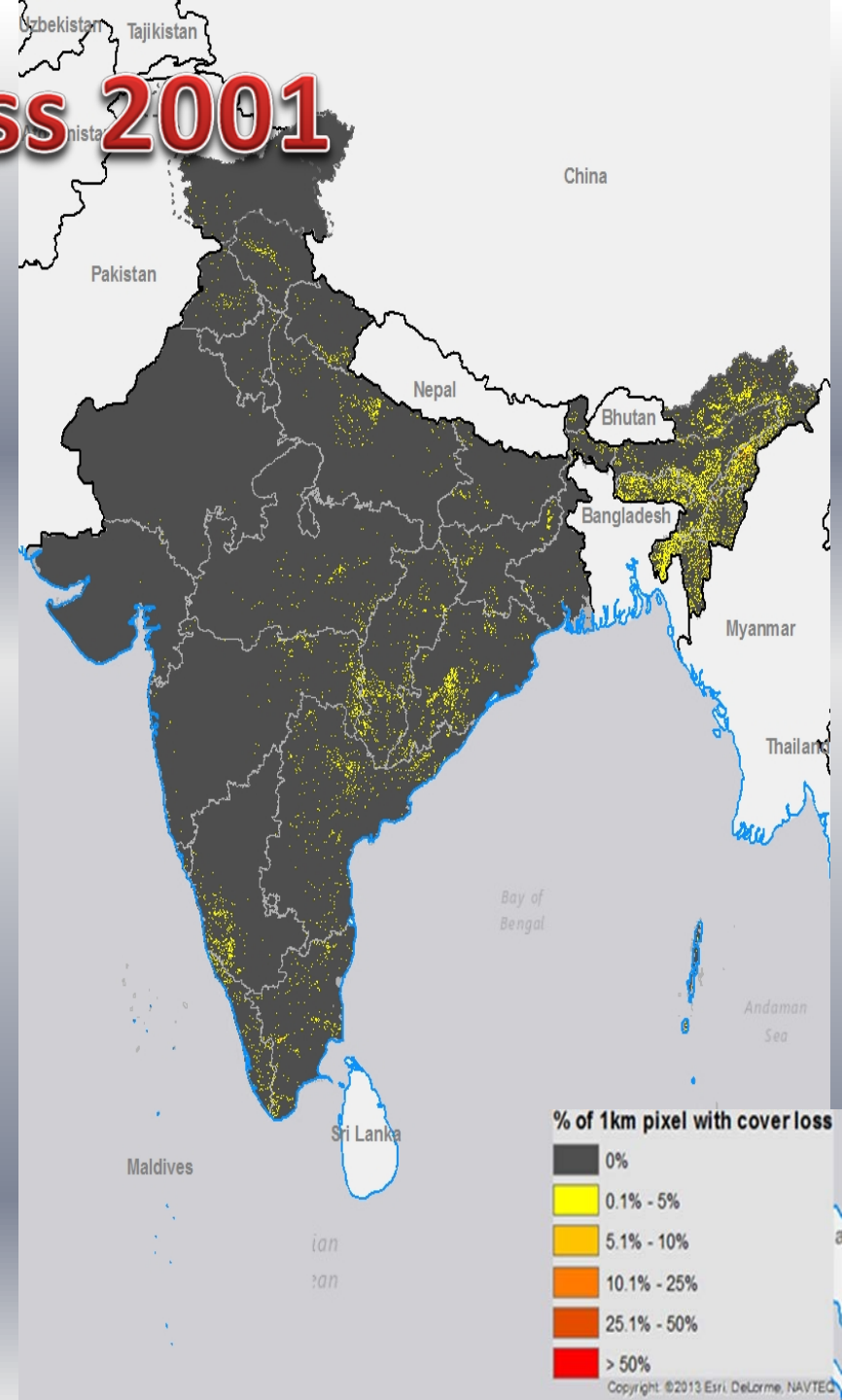
Percent Dependence



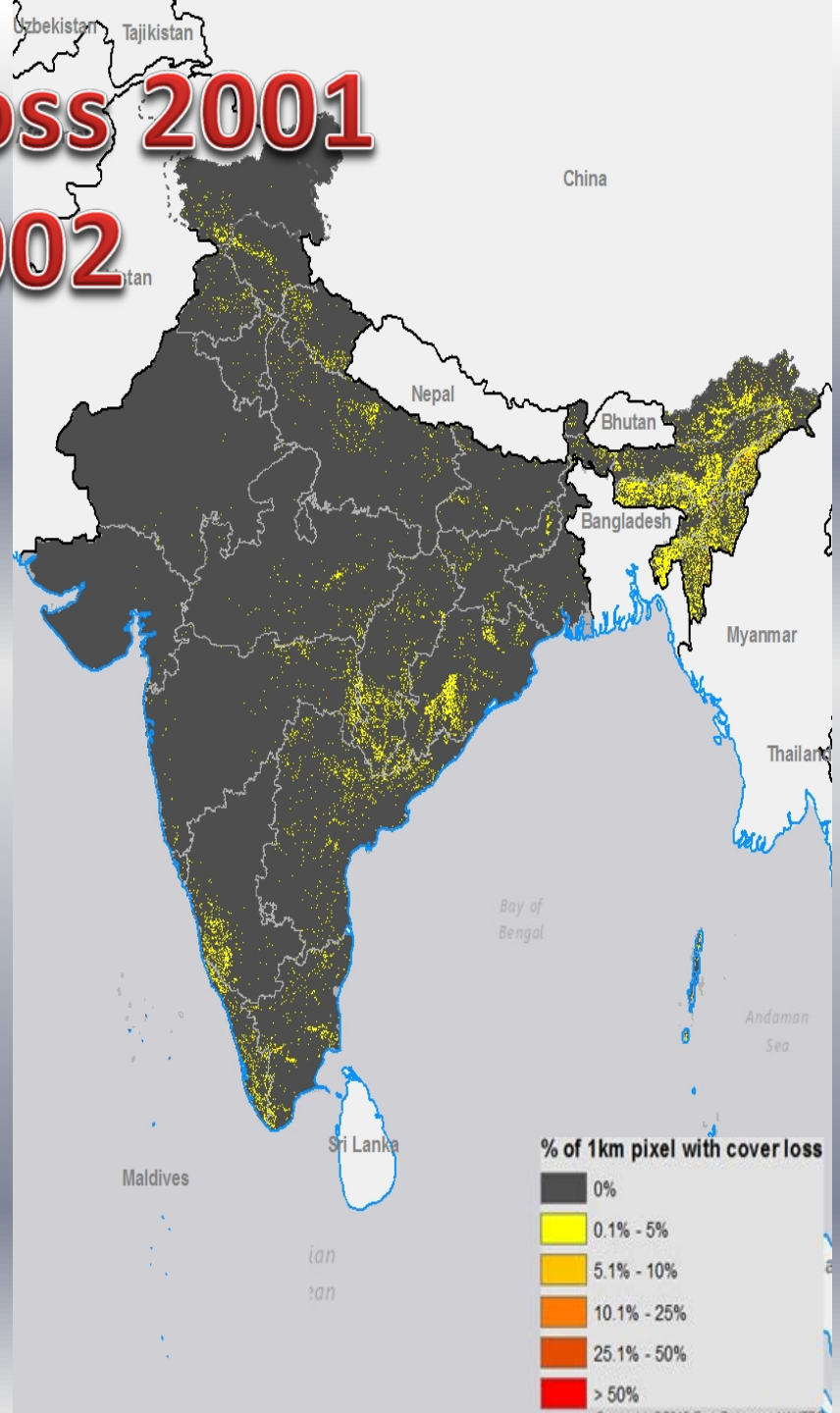
State	Total	Rural	Urban	SC	ST
Tripura	80.5	93.3	47.3	85.2	92.6
Chhattisgarh	80.0	92.1	40.8	54.9	78.4
Nagaland	77.9	91.8	43.6	--	82.1
Madhya Pradesh	66.4	78.6	31.0	69.2	84
Sikkim	52.5	70.8	5.3	49.5	59
Mizoram	44.5	80.8	11.7	31	45
All India	<b>49.0</b>	<b>62.5</b>	<b>20.1</b>	54.9	78.4



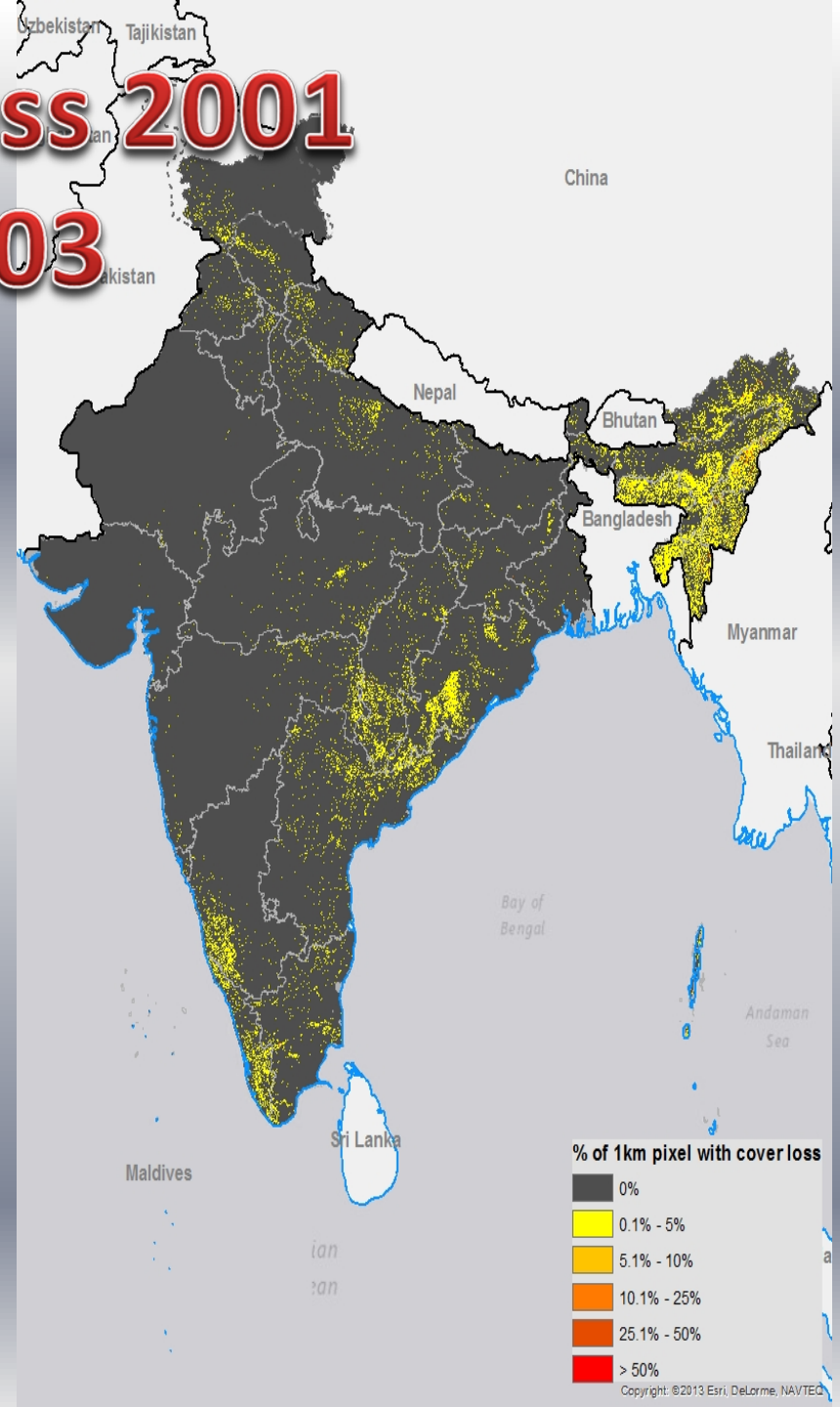
# Forest Loss 2001



# Forest Loss 2001 - 2002

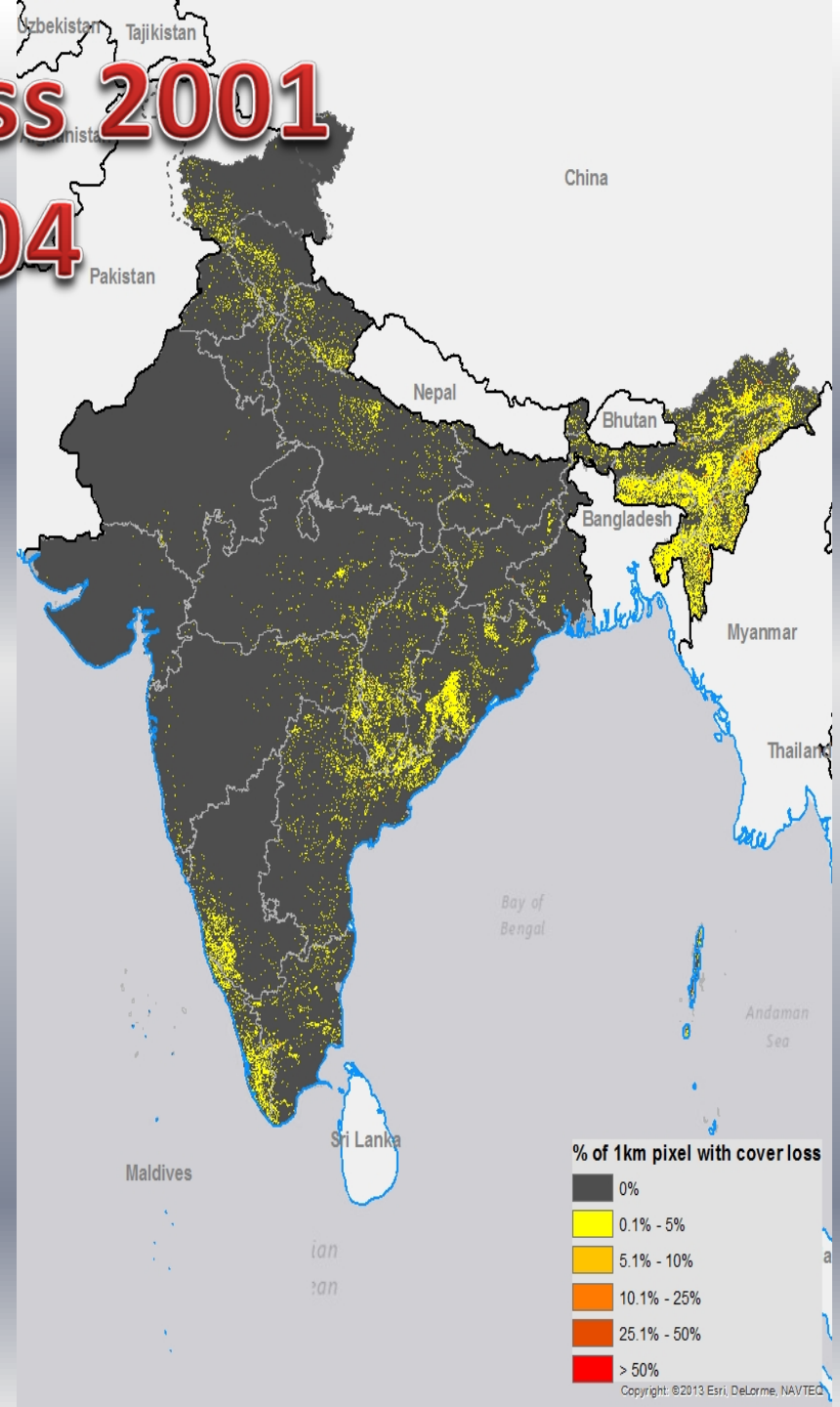


# Forest Loss 2001 - 2003

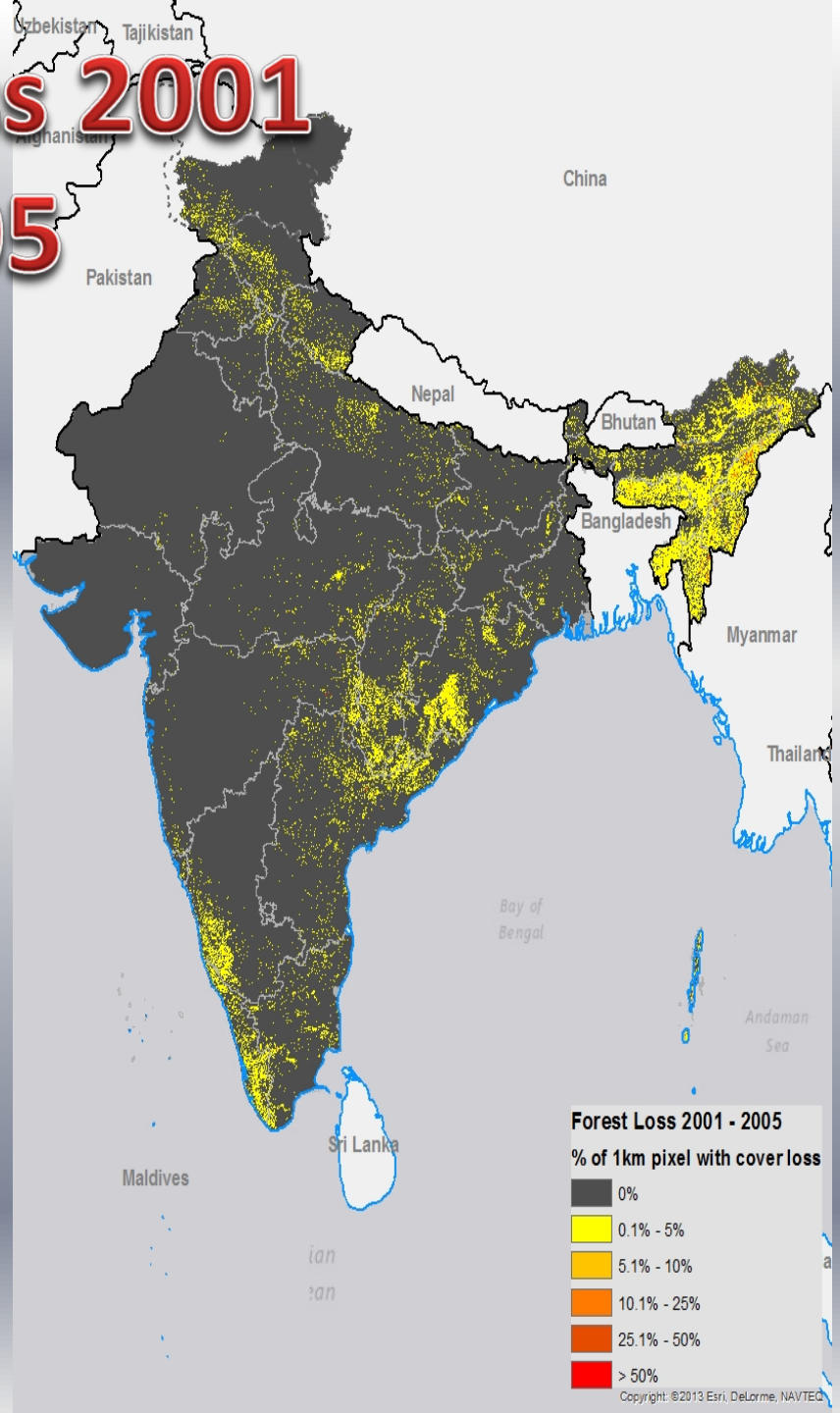




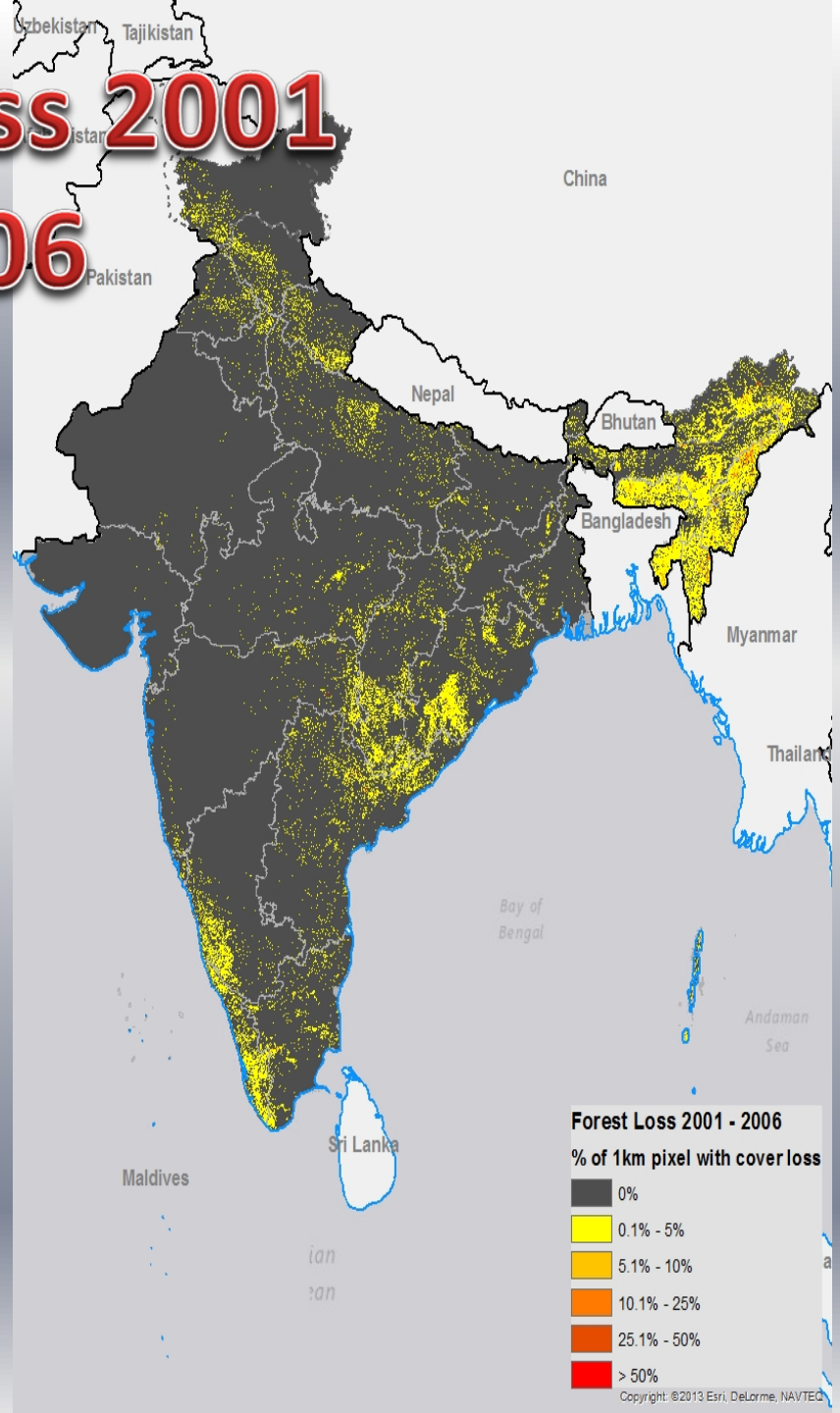
# Forest Loss 2001 - 2004



# Forest Loss 2001 - 2005

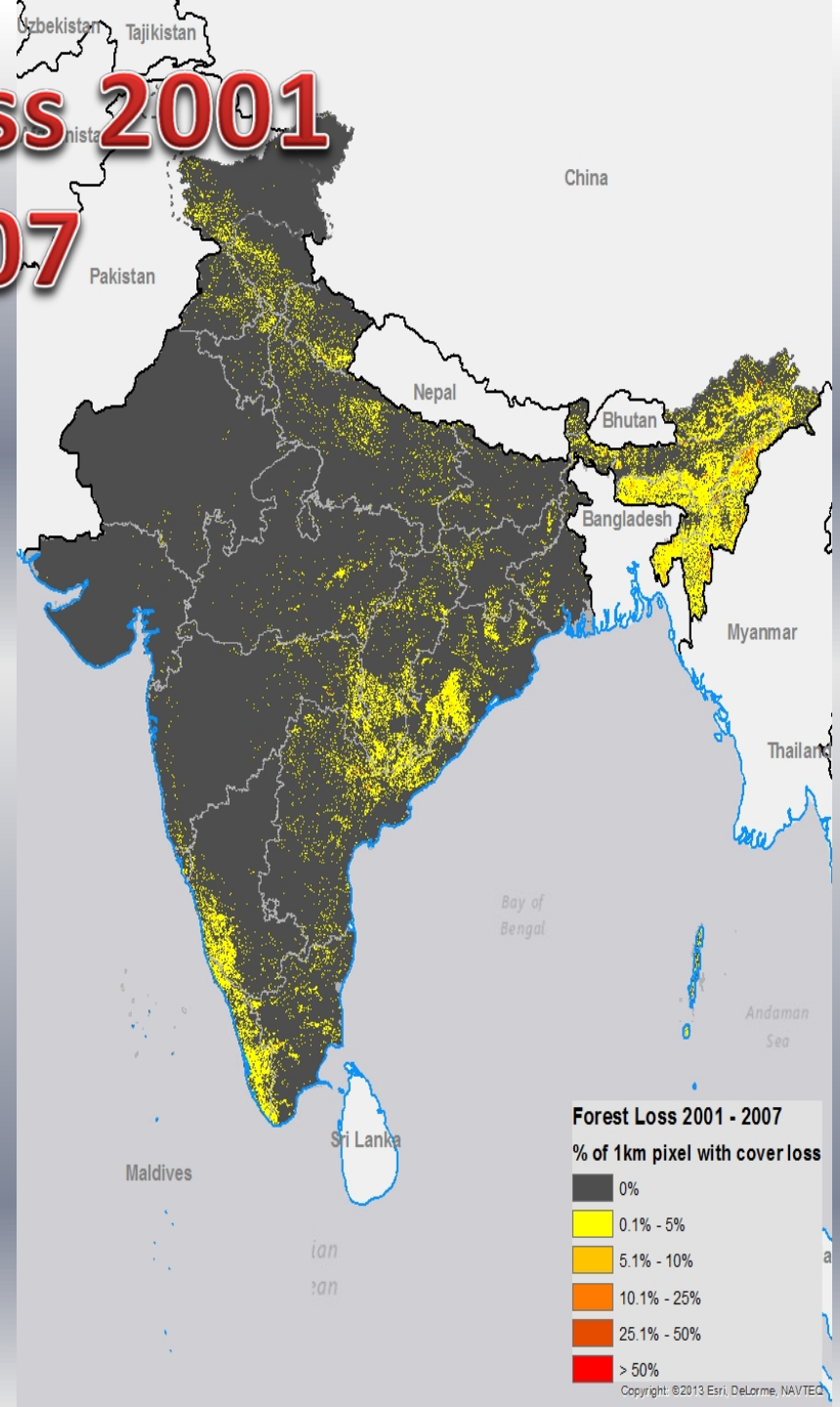


# Forest Loss 2001 - 2006

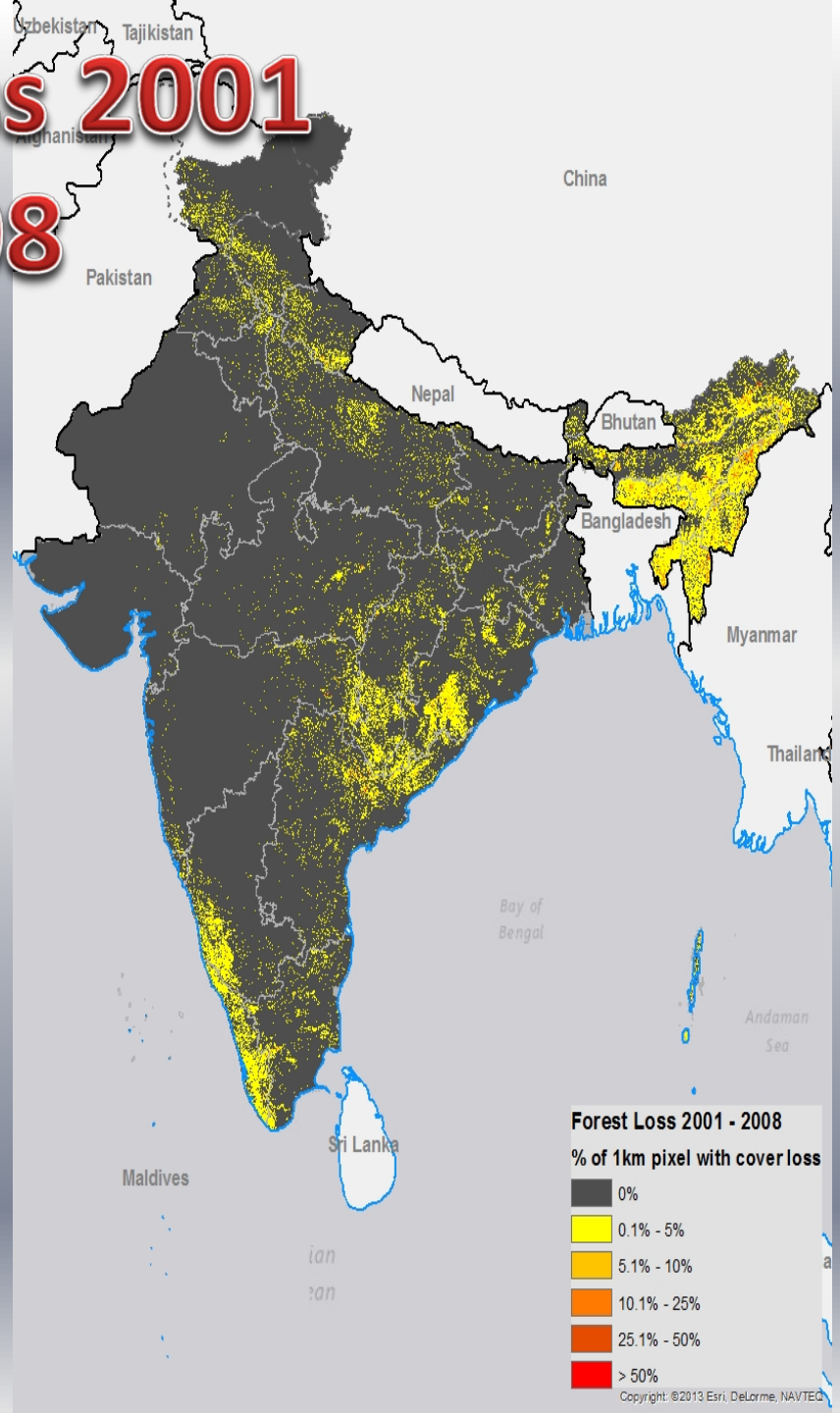




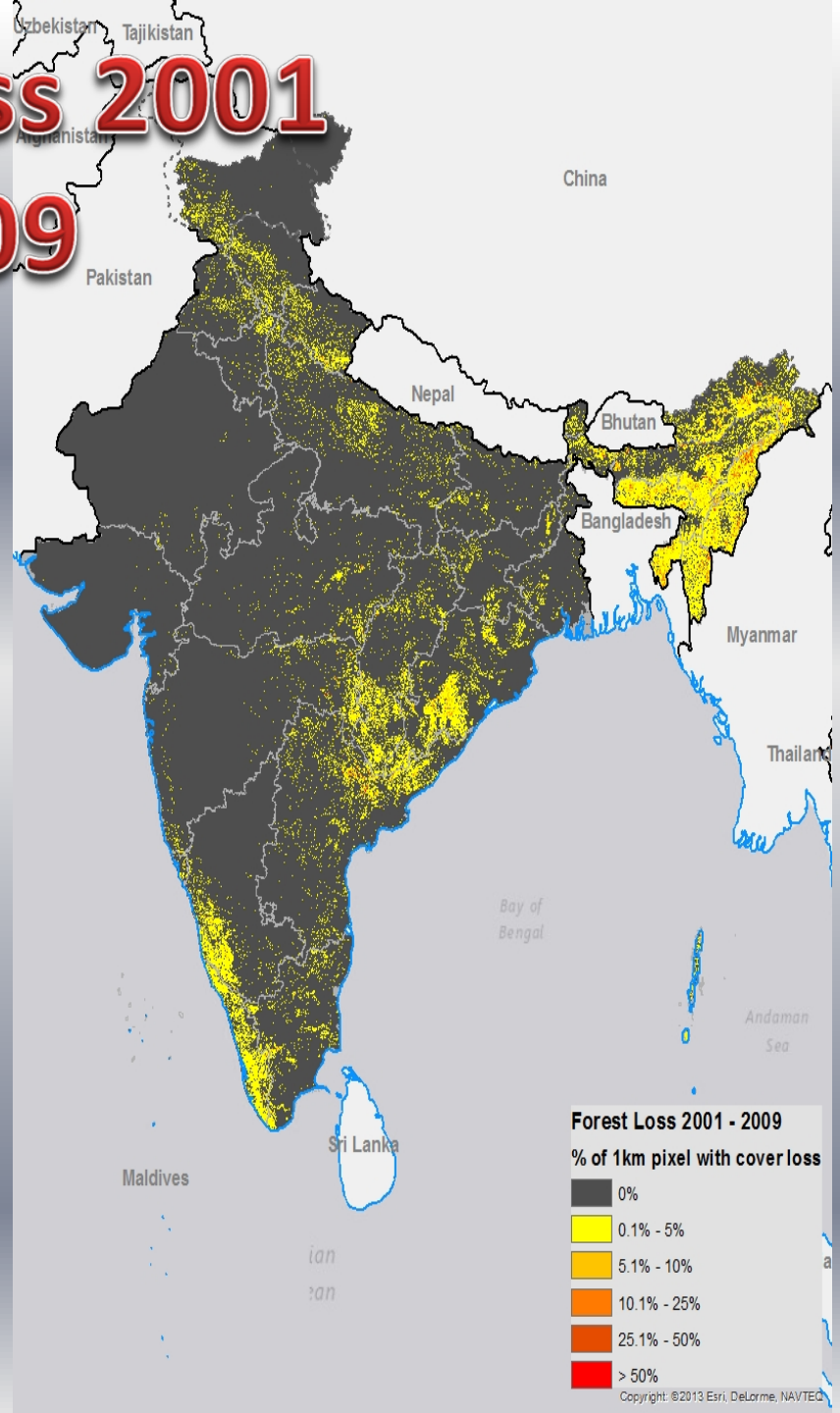
# Forest Loss 2001 - 2007



# Forest Loss 2001 - 2008

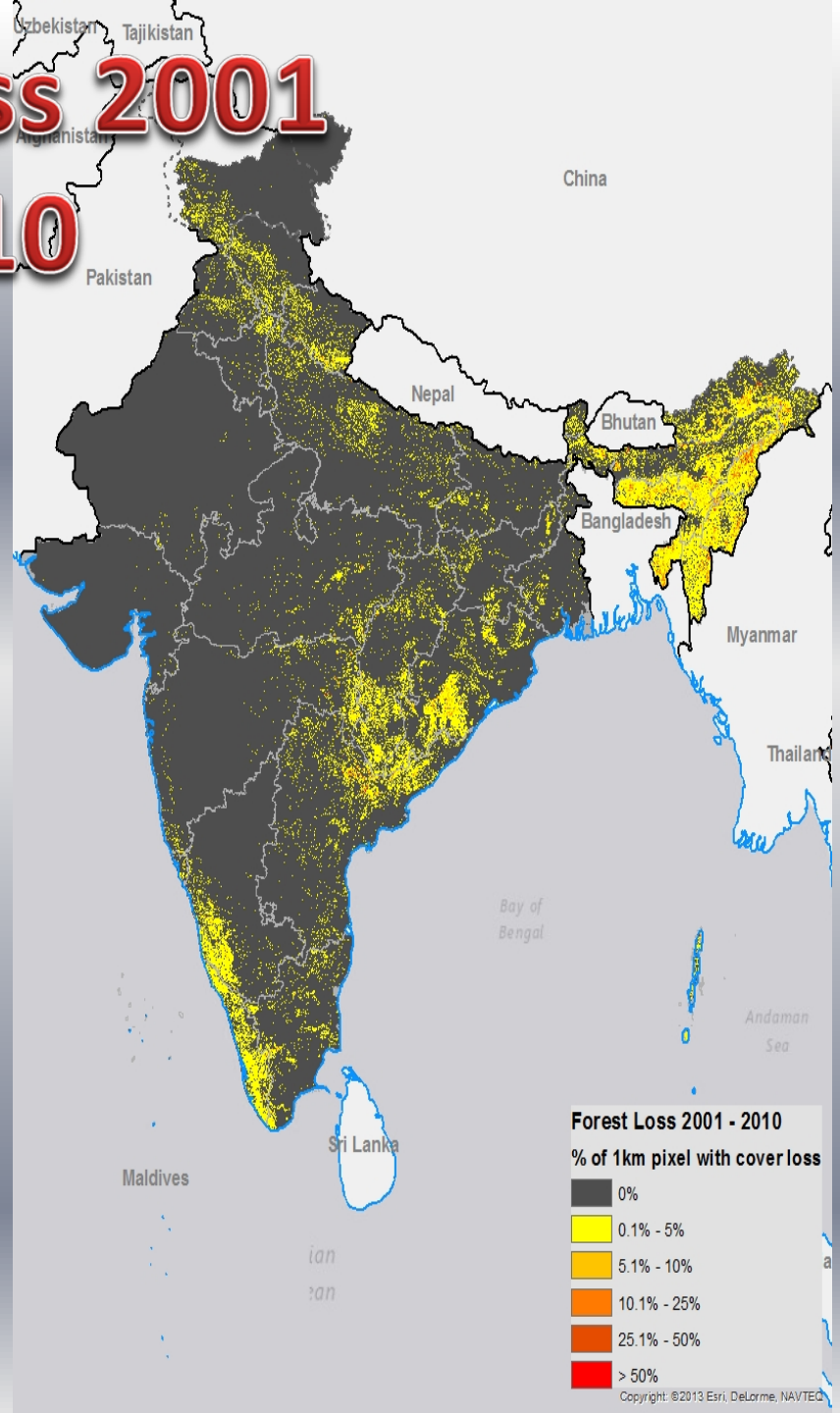


# Forest Loss 2001 - 2009

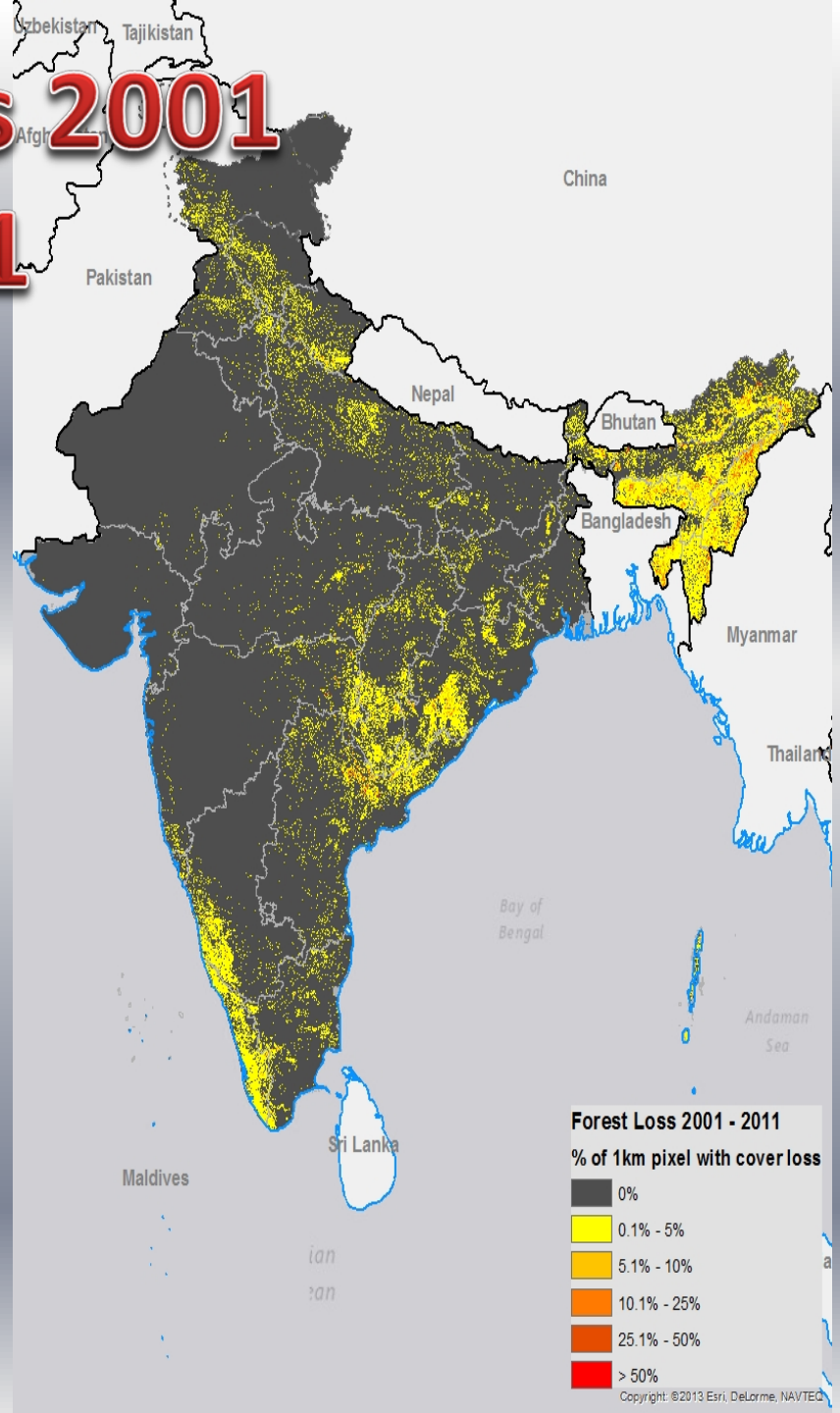




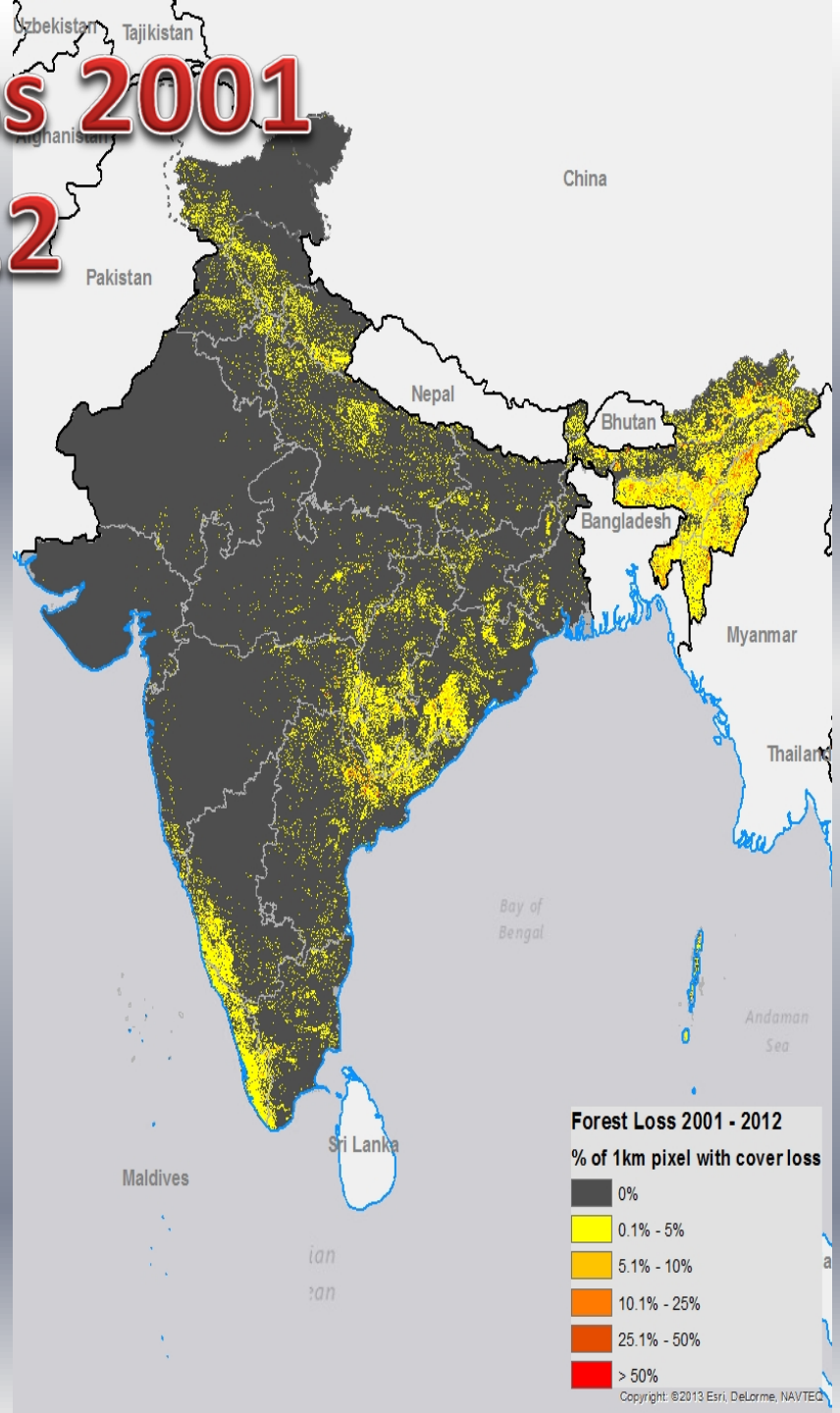
# Forest Loss 2001 - 2010



# Forest Loss 2001 - 2011

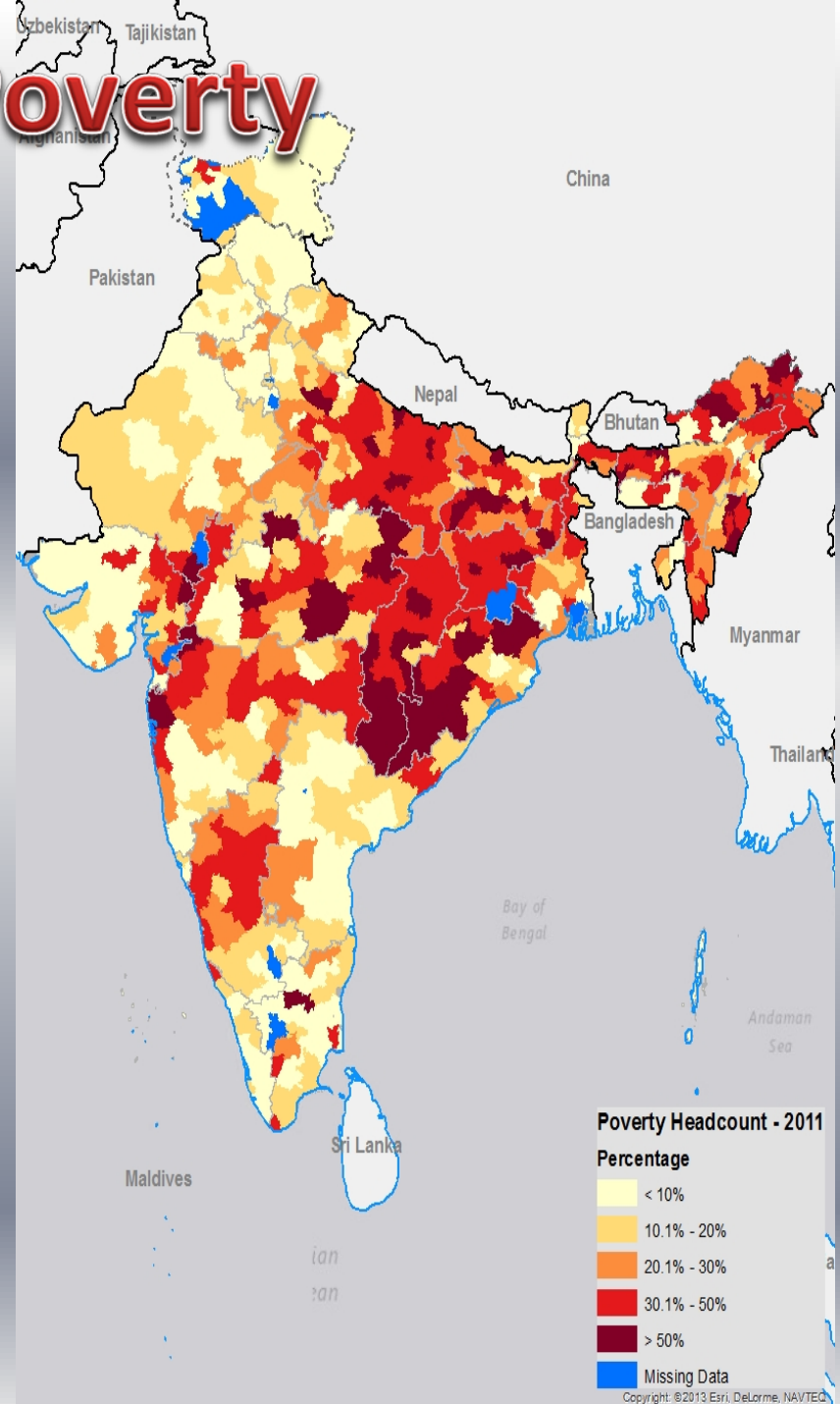


# Forest Loss 2001 - 2012



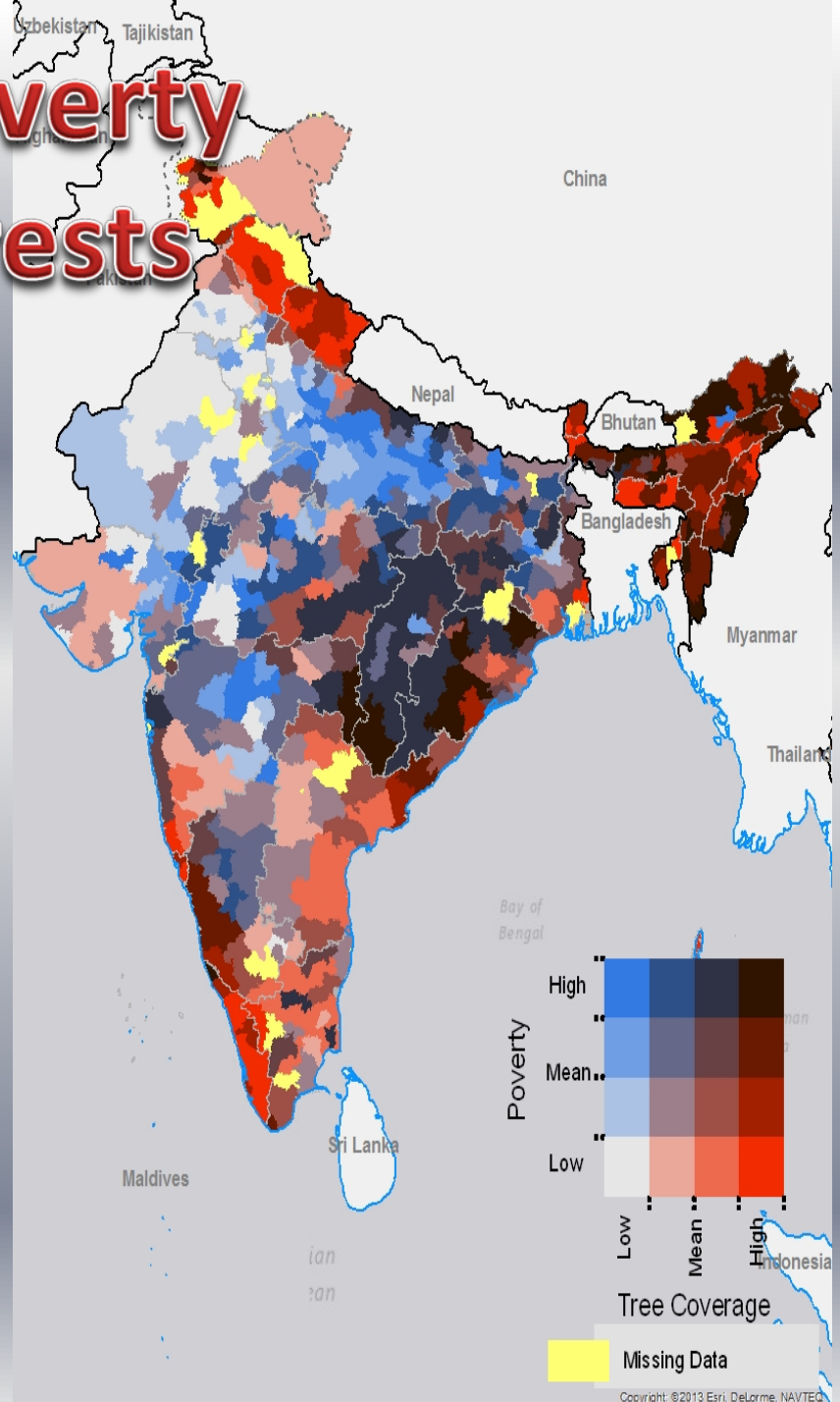


# Rural Poverty



Source: SAR Chief Economists  
Office

# Rural Poverty and Forests



# New Challenges – New Approaches

- World Bank and GEF is stepping up its support
  - Technical assistance and demonstrative investments on Forest Quality Improvement, Invasive Species Management and Ecosystem Services Measurement
  - Ecosystem Services Improvement Project (ESIP)
  - Will support the 10 year/US\$ 3 billion Green India Mission

# ...and so the journey continues...

1980s

- Institutional Capacity Building (WB/IDA)
- Sector Focus (Forestry - WB/IDA)

1990s

- Sector Focus (Integrated Watersheds – WB/IDA)
- Community Centric Conservation (Ecodevelopment – GEF/WB)

2000s

- Community Centric Conservation (GEF/WB)
- Landscape based Approach (GEF/WB)

2010s

- Landscape based Approach (GEF/WB)
- Ecosystem Services Approach (GEF/WB)

2020s - ? ? ?



**Thank you**

