



# The significance of protecting Natural Capital in greening the world's economies

Richard McLellan  
Director Footprint  
WWF International





# PROTECT NATURAL CAPITAL



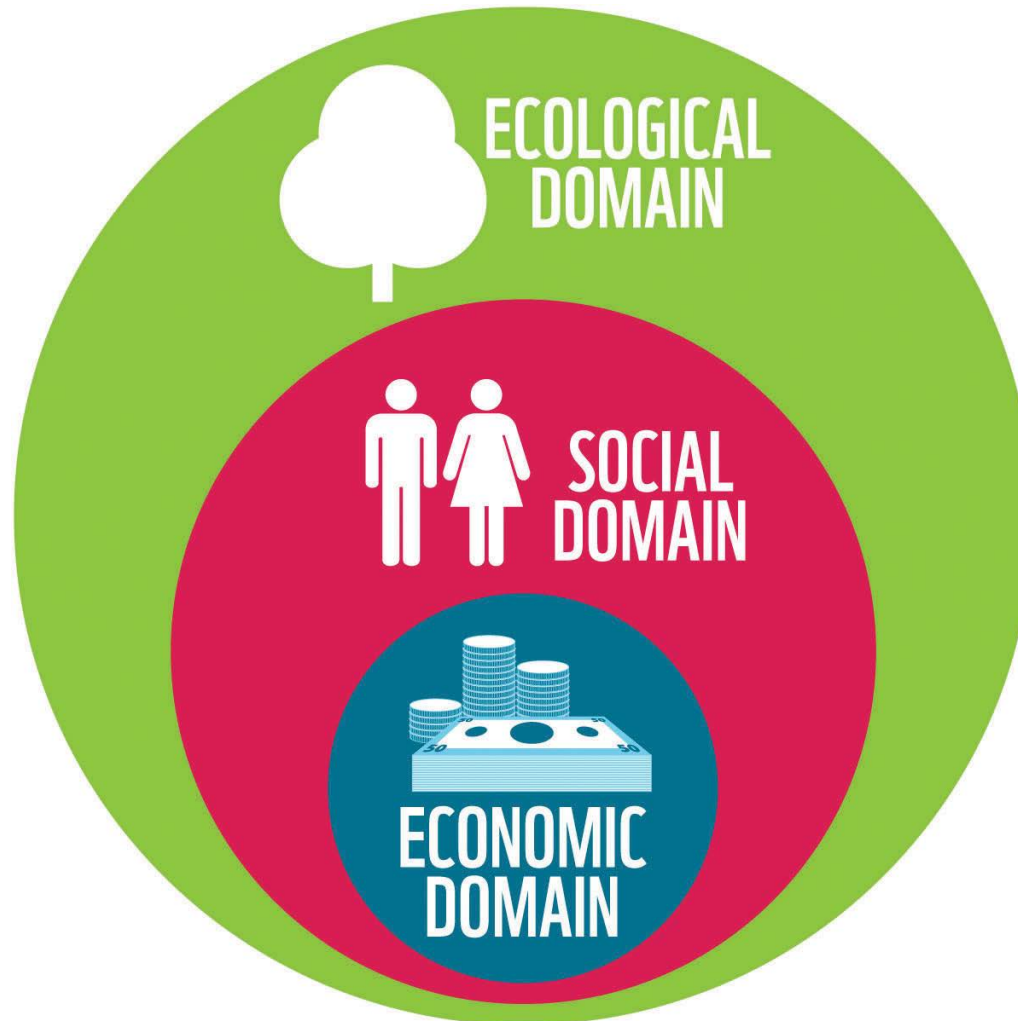
# Protecting Natural Capital

... the basis of WWF's One Planet Perspective



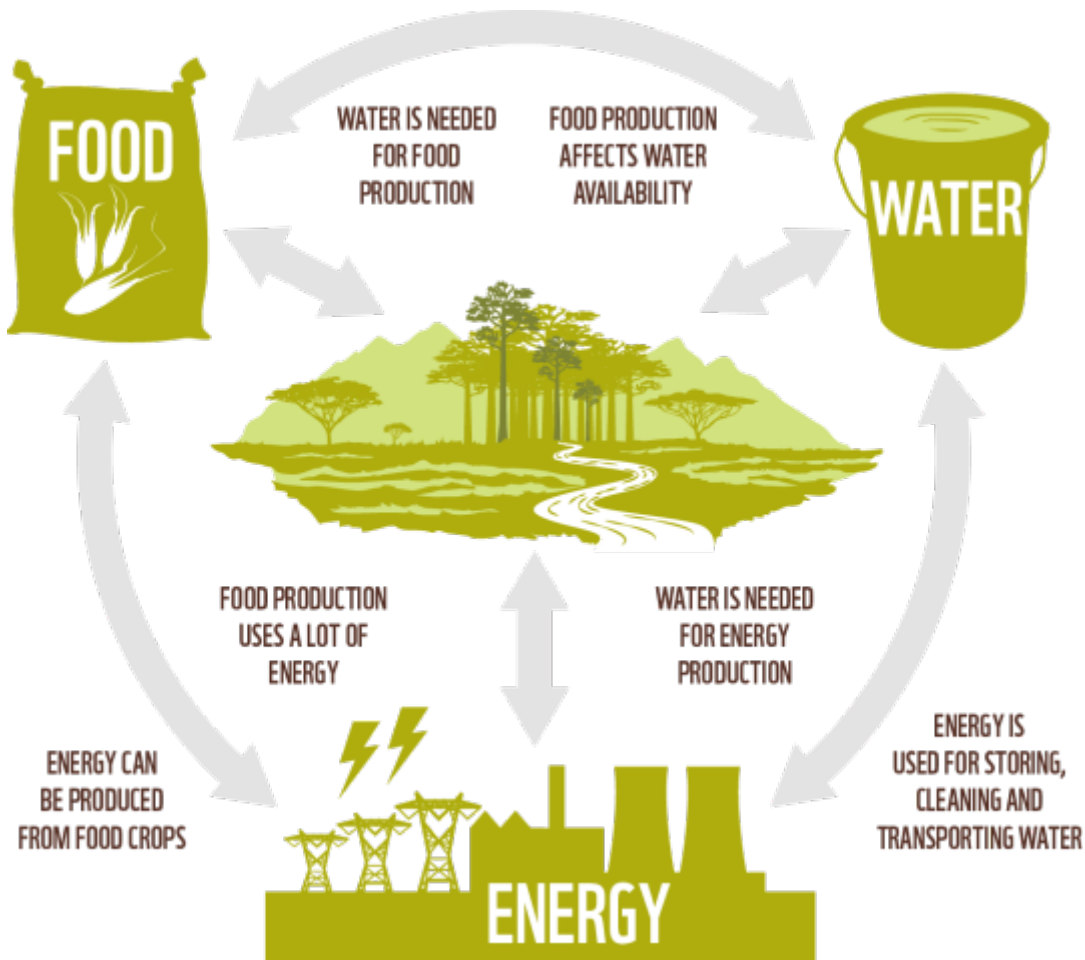
# Protecting Natural Capital

Ecosystems sustain societies that create economies

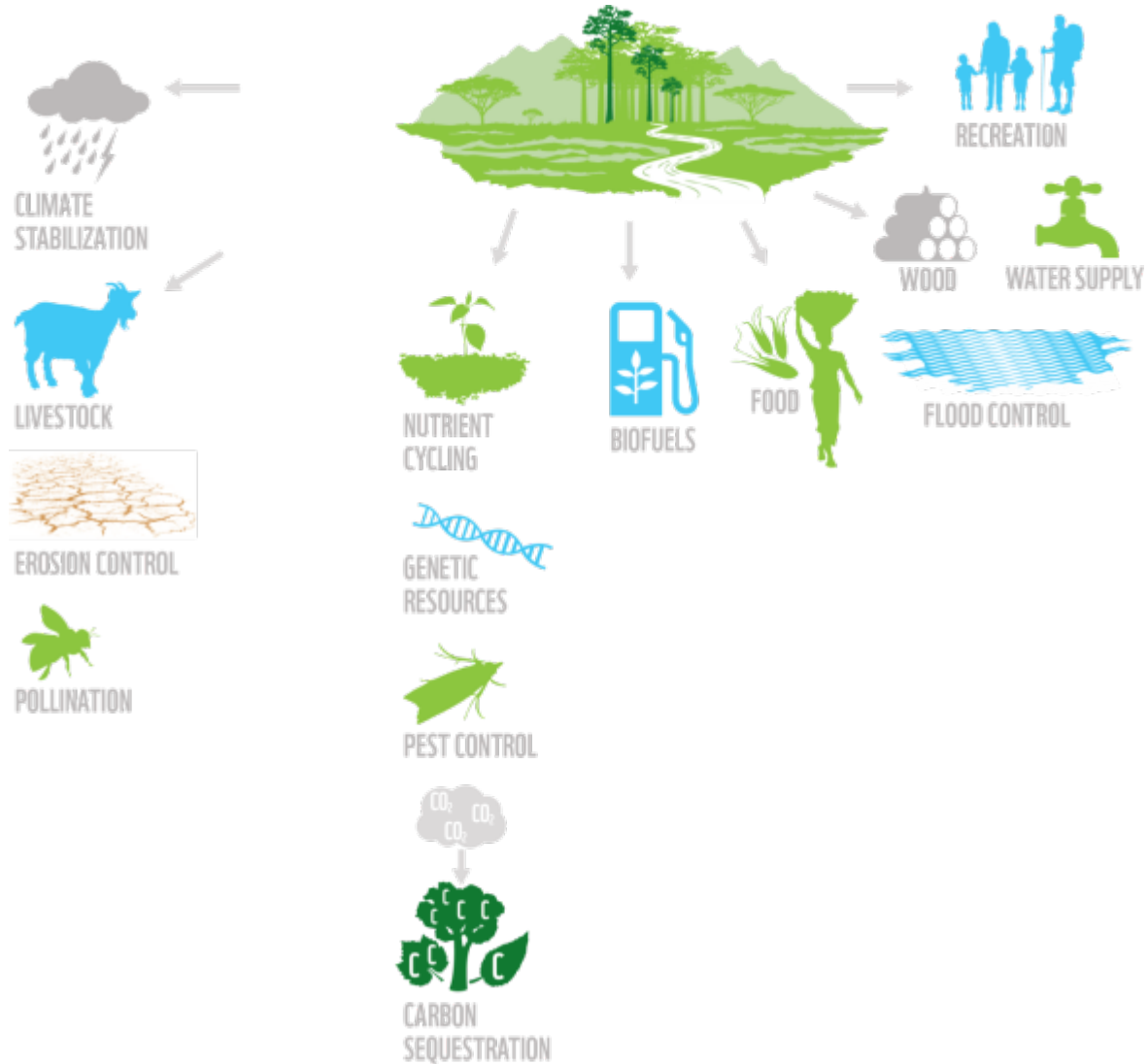


# Nature underpins food, water and energy security

Inter-relationships and interdependencies between the biosphere and humanity's food, water and energy security



# Nature provides Ecosystem services





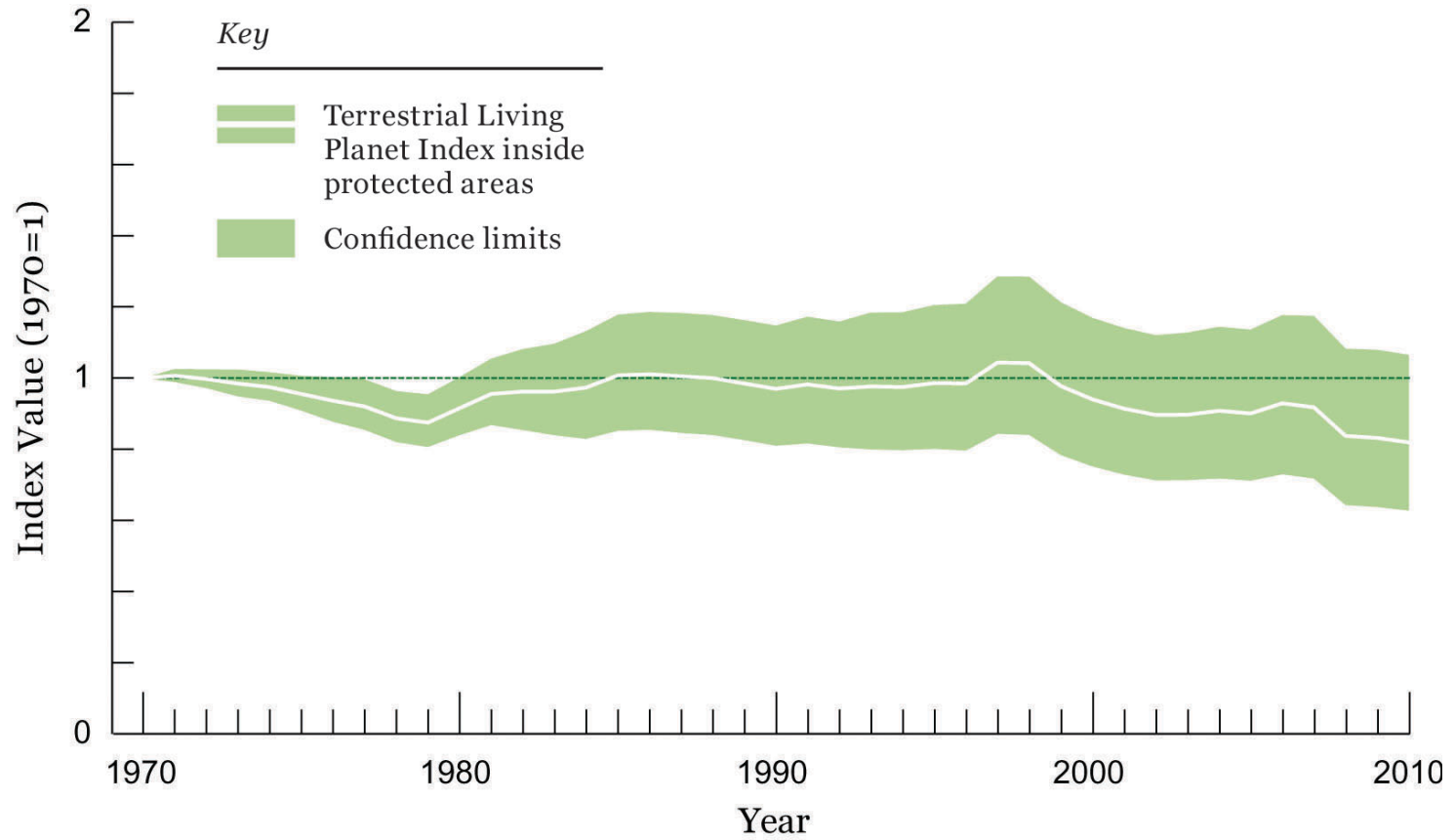
---

# PROTECTED AREAS WORK



# Protected Areas are working, but ...

## Terrestrial LPI inside PAs







# MEASURE WHAT MATTERS







# Thank you

[www.panda.org/lpr](http://www.panda.org/lpr)

