



The significance of protecting Natural Capital in greening the world's economies

Richard McLellan
Director Footprint
WWF International





PROTECT NATURAL CAPITAL



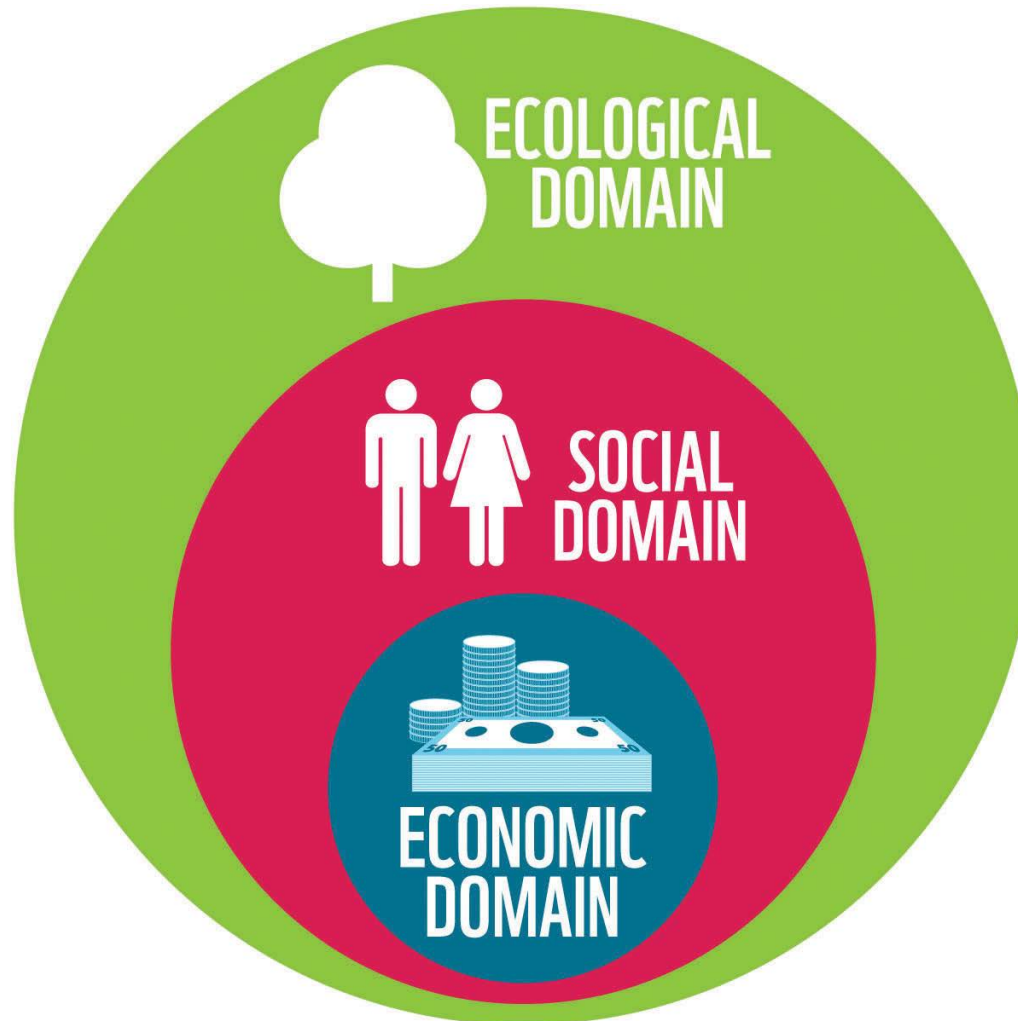
Protecting Natural Capital

... the basis of WWF's One Planet Perspective



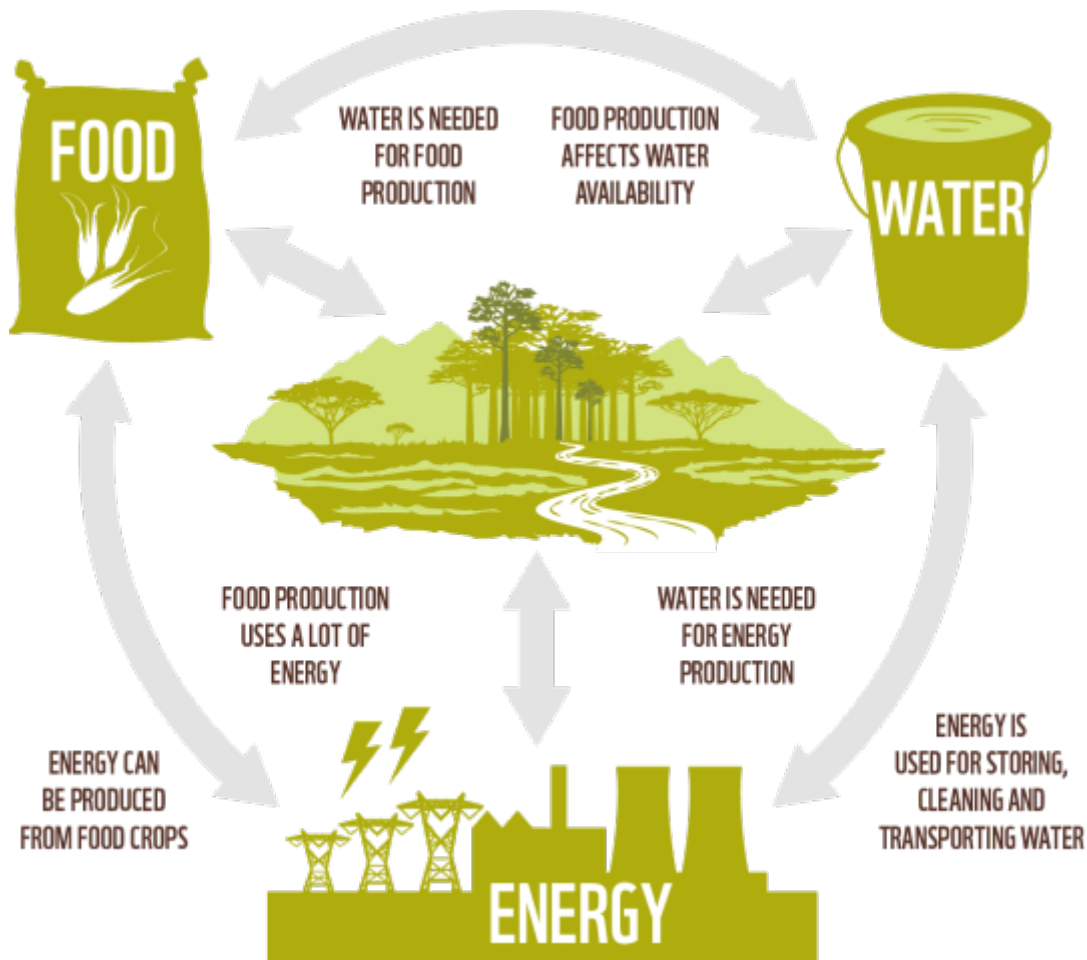
Protecting Natural Capital

Ecosystems sustain societies that create economies

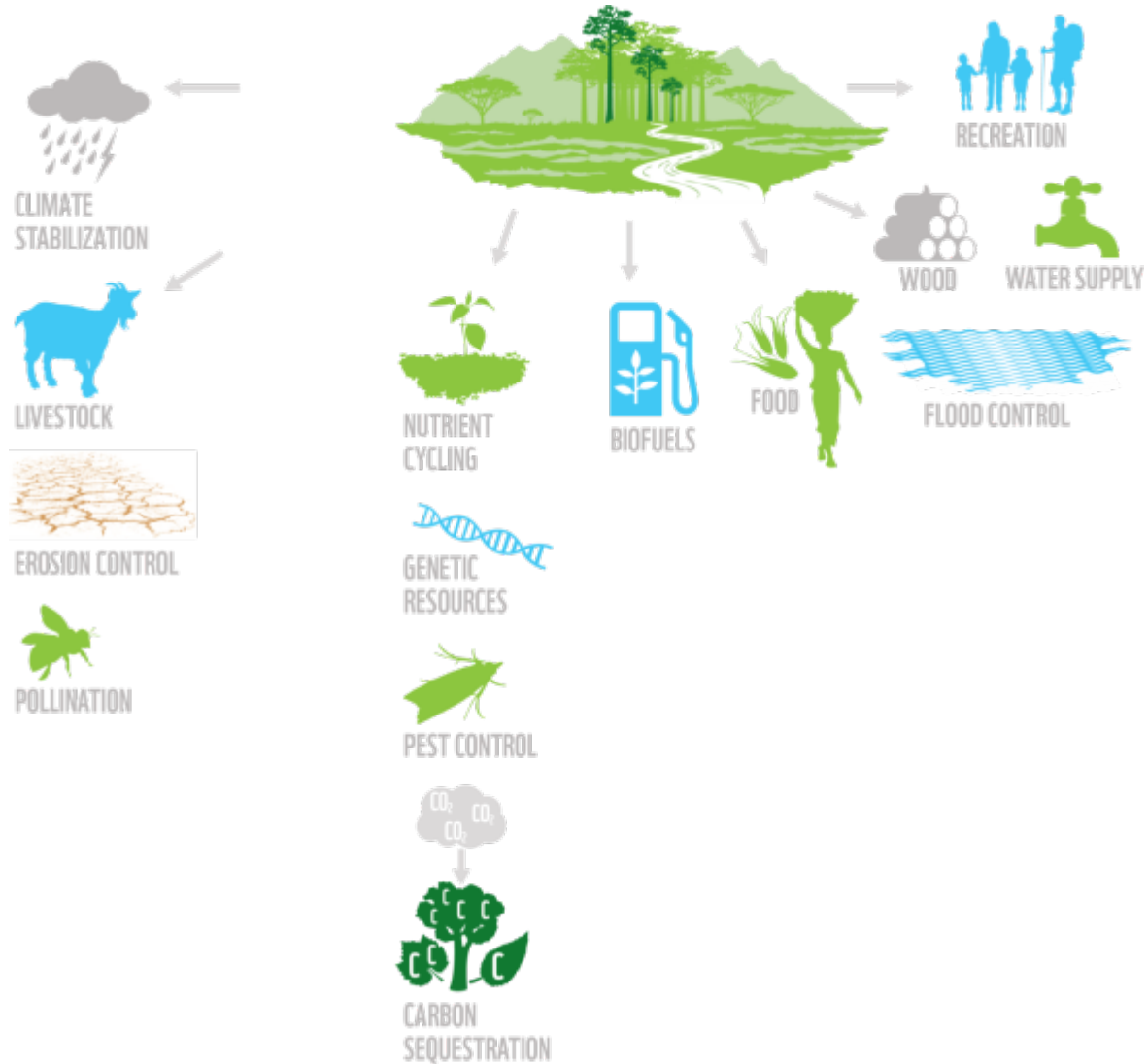


Nature underpins food, water and energy security

Inter-relationships and interdependencies between the biosphere and humanity's food, water and energy security



Nature provides Ecosystem services



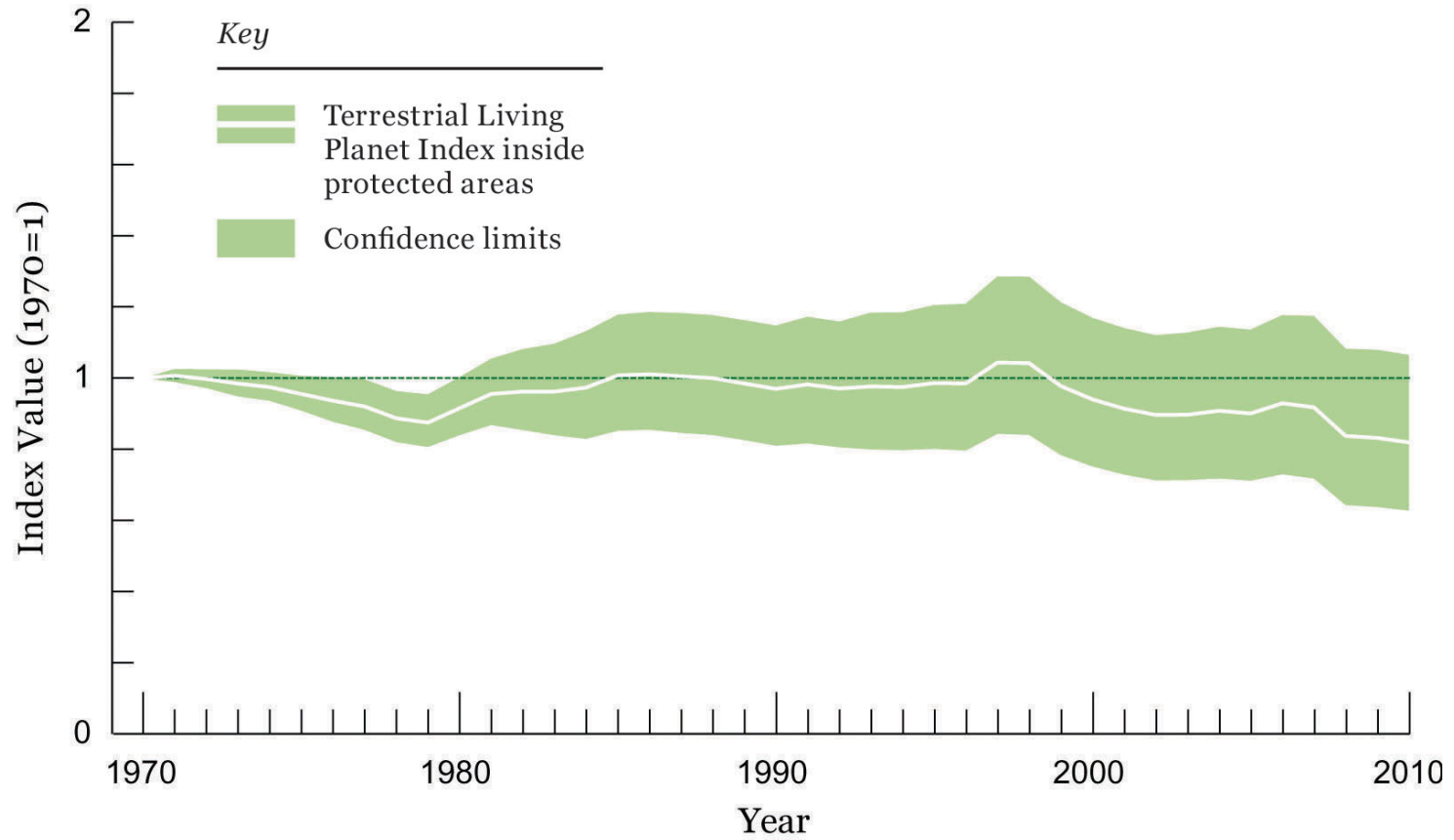


PROTECTED AREAS WORK



Protected Areas are working, but ...

Terrestrial LPI inside PAs





MEASURE WHAT MATTERS







Thank you

www.panda.org/lpr

