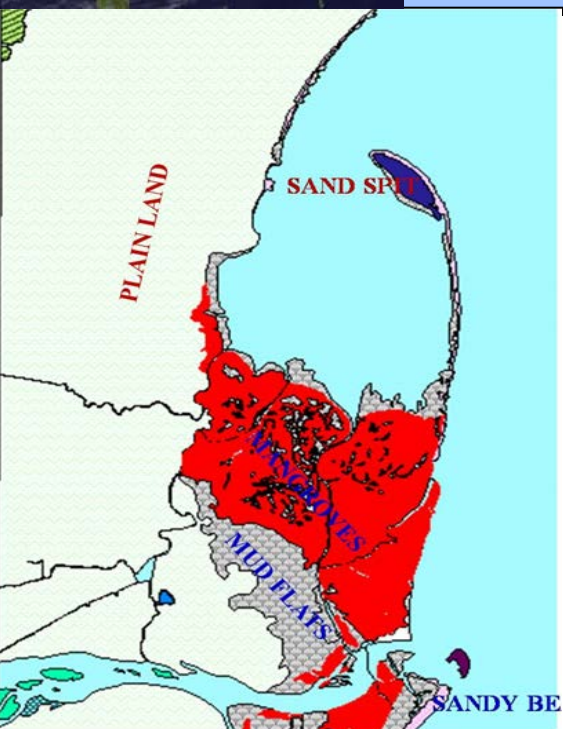


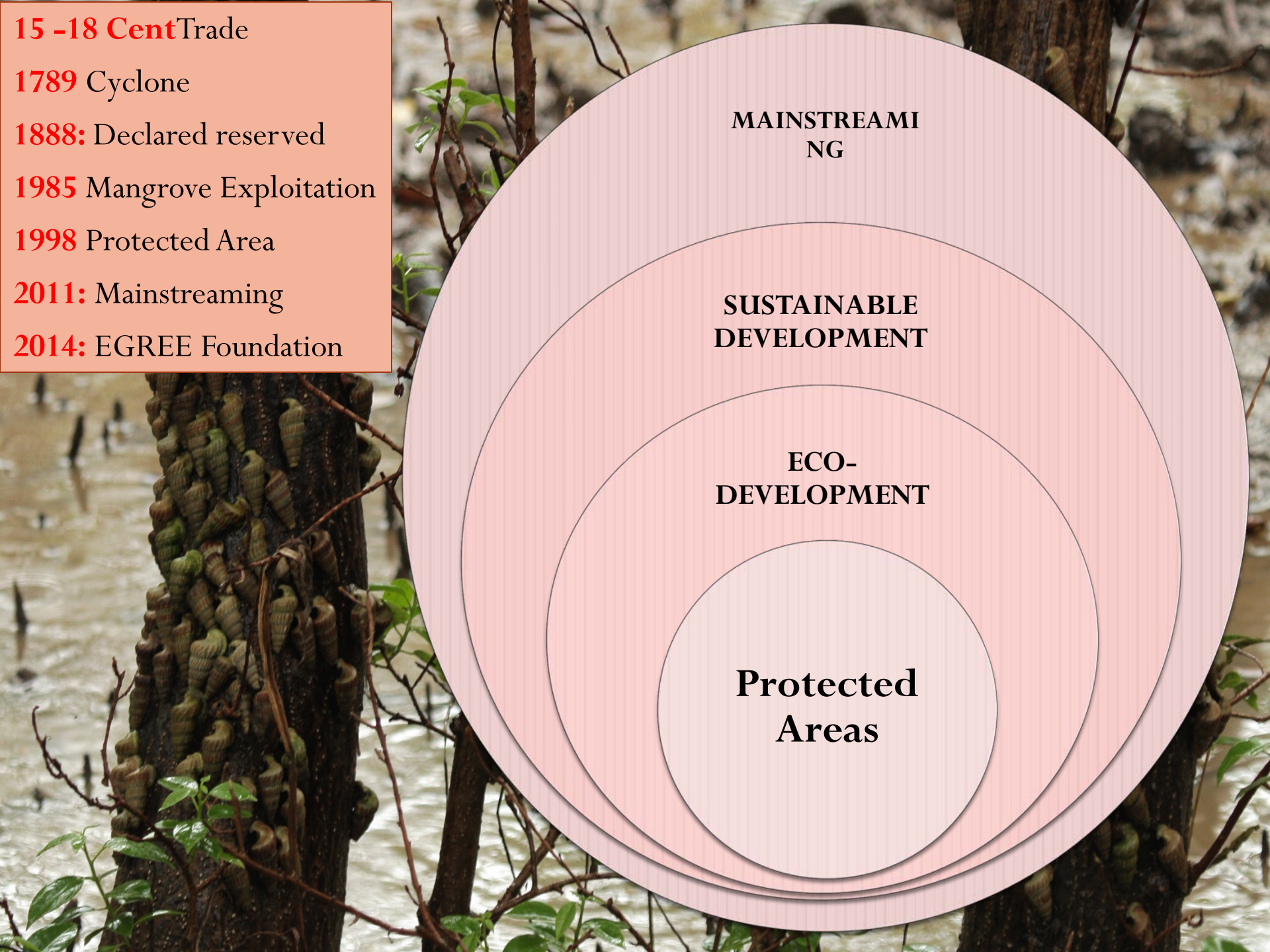


EGREE FOUNDATION

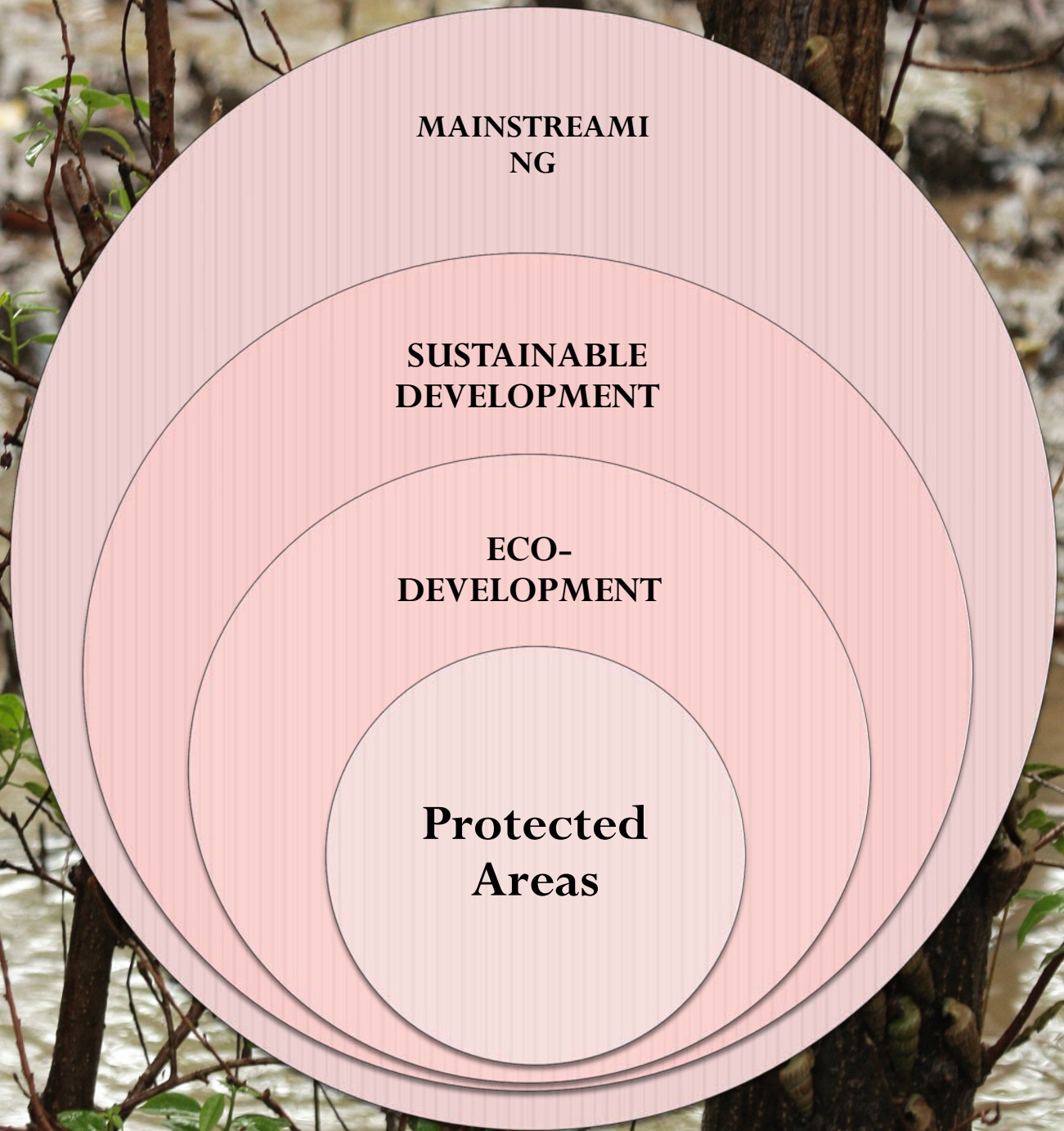
An initiative of GoI-UNDP-GEF Project: Mainstreaming Coastal and Marine Biodiversity Conservation into Production Sectors in EGREE, A.P

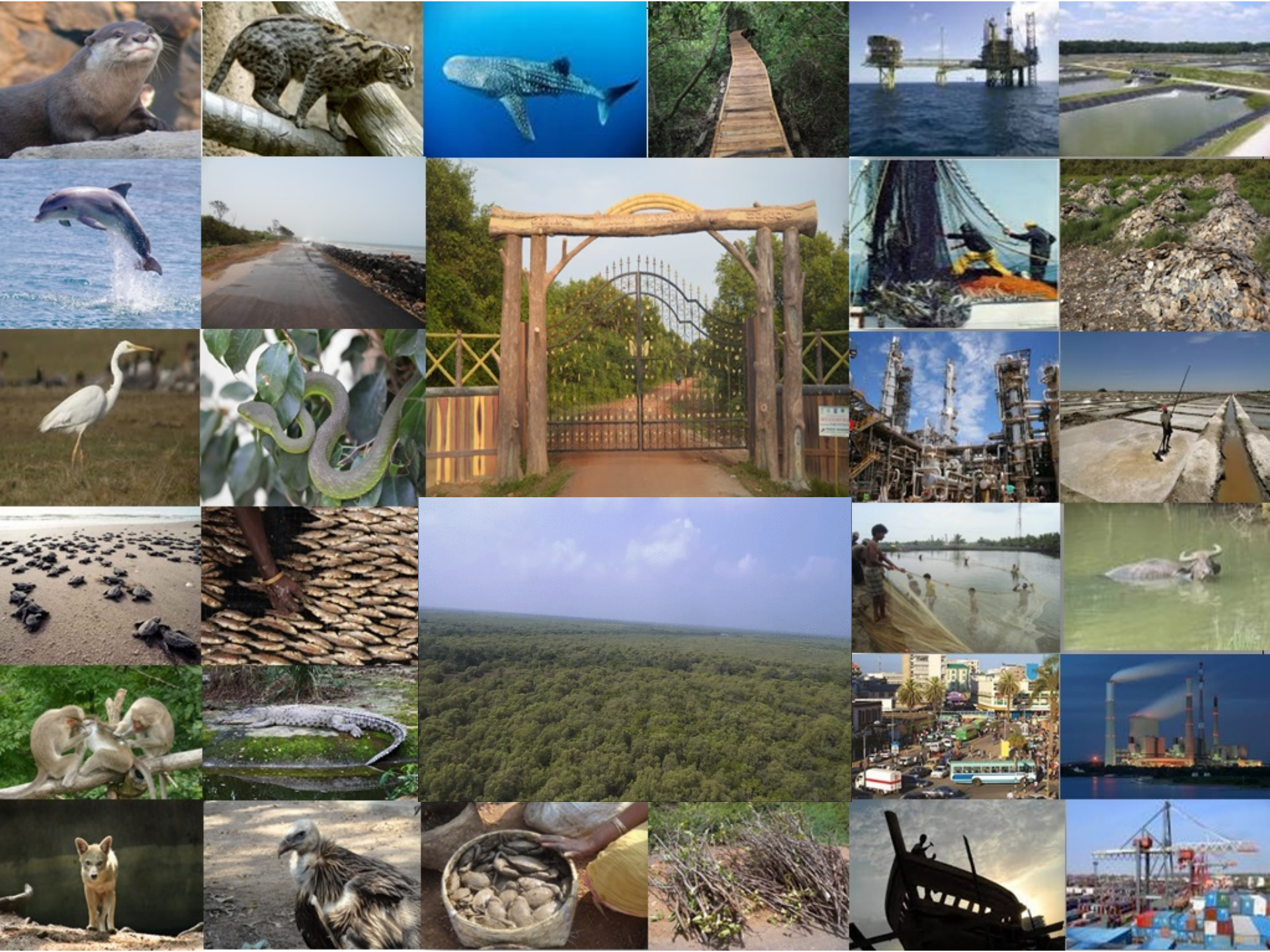
Tarun Kathula, UNDP India



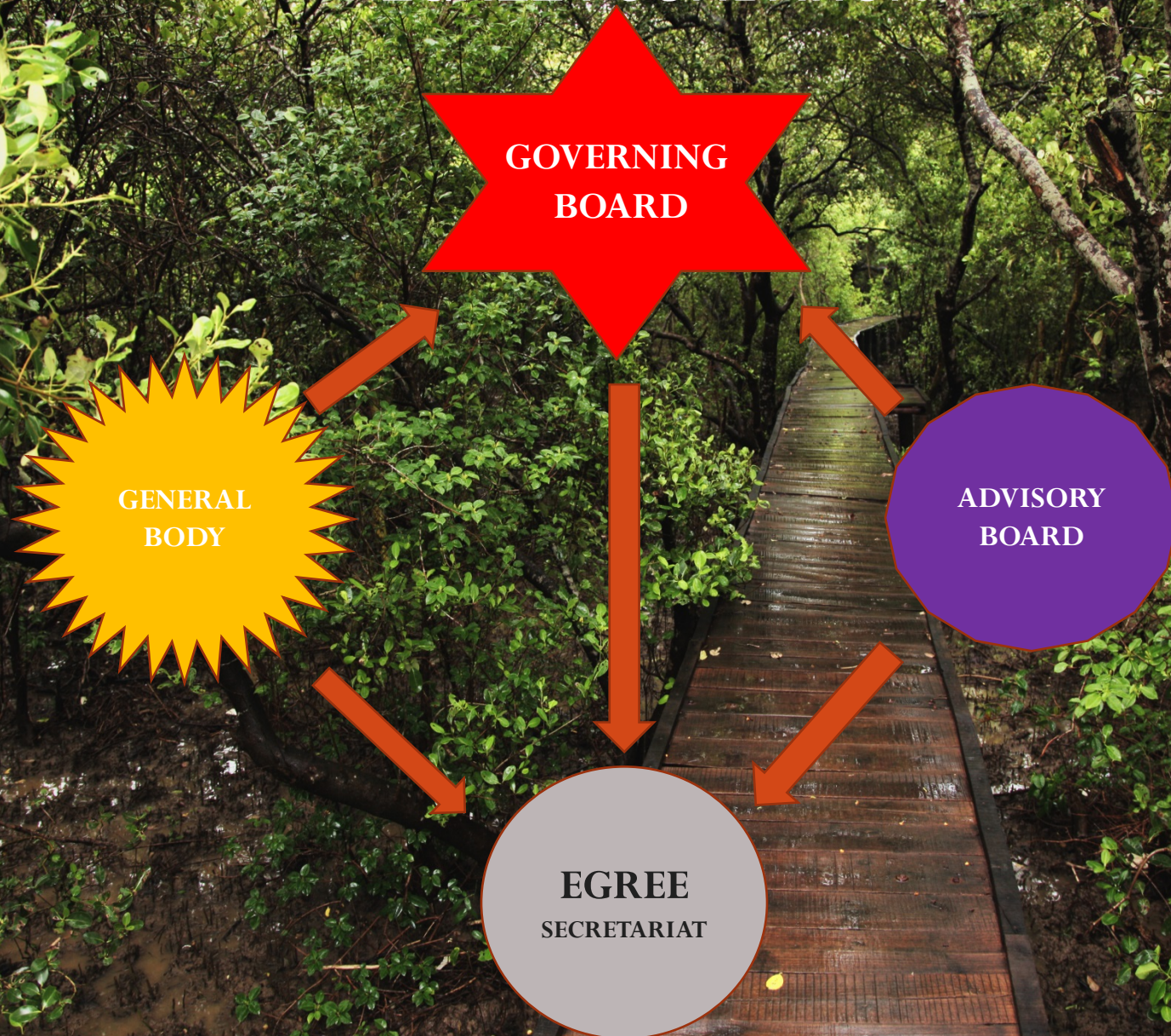


- 15 -18 Cent** Trade
- 1789** Cyclone
- 1888:** Declared reserved
- 1985** Mangrove Exploitation
- 1998** Protected Area
- 2011:** Mainstreaming
- 2014:** EGREE Foundation





EGREE FOUNDATION



1st GOVERNIN BOARD MEETING – 30th October 2014 for MICRO-LEVEL MANAGEMENT

- Community/Private stakeholder representative on rotation basis
- Issue a G.O to allow fresh water for survival of Mangroves while constructing irrigation projects in the upstream
- Revisit the boundaries of ESZ outside the Sanctuary for prohibiting developmental activities to minimize the impact on Sanctuary
- Regular coordination meeting level at site
- Identify more Mangroves patches in and around EGREE region and designate them as forests under Indian Forests Act
- SUSTAINIBILITY after project period