



PROTECTED AREAS OF BHUTAN *ITS CONTRIBUTION TO GNH*

01/08/2005 12:58

Table of Content



1

What is Gross National Happiness (GNH)?

2

GNH and Environmental Conservation

3

Contribution of Protected Areas on GNH

4

Conclusion and way-forward



TIBET AUTONOMOUS REGION (CHINA)

BHUTAN

Lhasa •

NEPAL

Kathmandu •

Thimphu •

INDIA

BANGLADESH

INDIA

Dhaka •

MYANMAR

What is GNH?



Development Philosophy

- Alternative Development Model Pursued by Bhutan for Public Policy Making

Objective

- Achieve a harmonious balance between material well-being and the spiritual, emotional cultural and ecological needs of an individual and society

Aspiration

- To promote individual and societal Happiness and well-being

True development of human society takes place when material, spiritual , emotional and ecological wellbeing occur side by side to complement and reinforce each other

The Four Pillars of Gross National Happiness



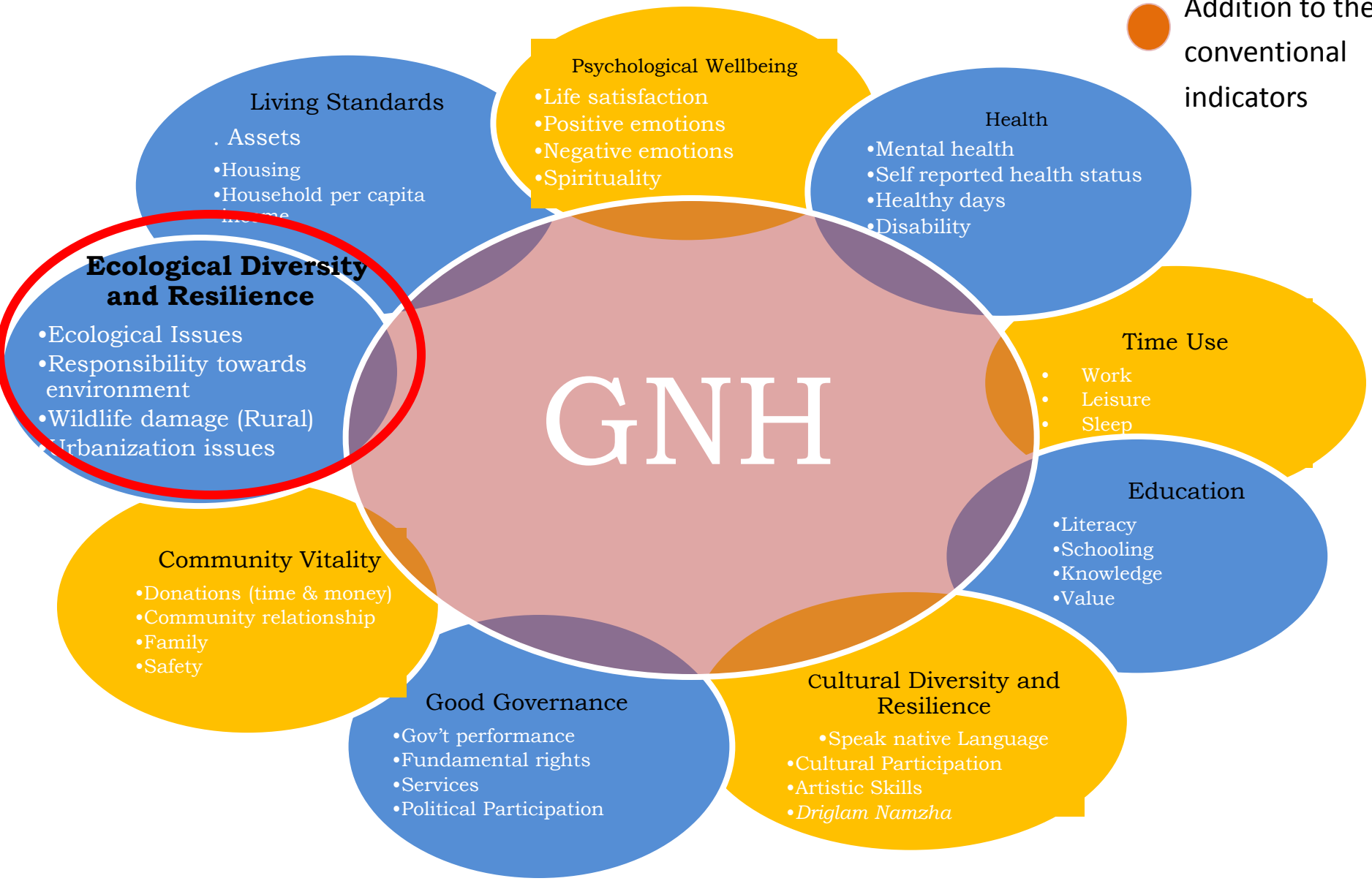
GNH Pillars

Sustainable and equitable socio-economic development	Preservation and promotion of culture	Conservation of the Environment	Good Governance
Poverty reduction Universal Primary Enrolment Free health and education services Land redistribution reforms Rapid rural infrastructure development	Transmission of values Strengthen family ties Promotion of meditation Balanced Time use Promote knowledge of traditional games, masked dances etc. Promote Voluntarism	Constitutional Requirement to maintain 60% of country under forest cover Carbon Neutral Over 50% of country declared as protected areas	Fostering a vibrant democratic culture Improve Performance of three tiers of governments Right to freedom of speech and opinion Freedom from Discrimination Trust in media Fighting Corruption

What is the GNH Index?



● Addition to the conventional indicators



Pillars of GNH

The Four Pillars of Gross National Happiness



GNH Pillars

Sustainable and equitable socio-economic development	Preservation and promotion of culture	Conservation of the environment	Good Governance
<ul style="list-style-type: none"> Poverty reduction Universal Primary Enrollment Free health and education services 	<ul style="list-style-type: none"> Transmission of values Strengthen family ties Promotion of medicine 	<ul style="list-style-type: none"> Constitutional Requirement to maintain 60% of country under forest cover Carbon neutral 	<ul style="list-style-type: none"> Fostering a vibrant democratic culture Improve Performance of three tiers of governments Freedom of expression

Bhutan's journey with GNH began more than four decades ago and more elaborate and precise metrics to measure GNH has been underway since 2008 with the GNH Index

National Happiness Commission

4

GNH Index

What is the GNH Index?



Addition to the conventional indicators



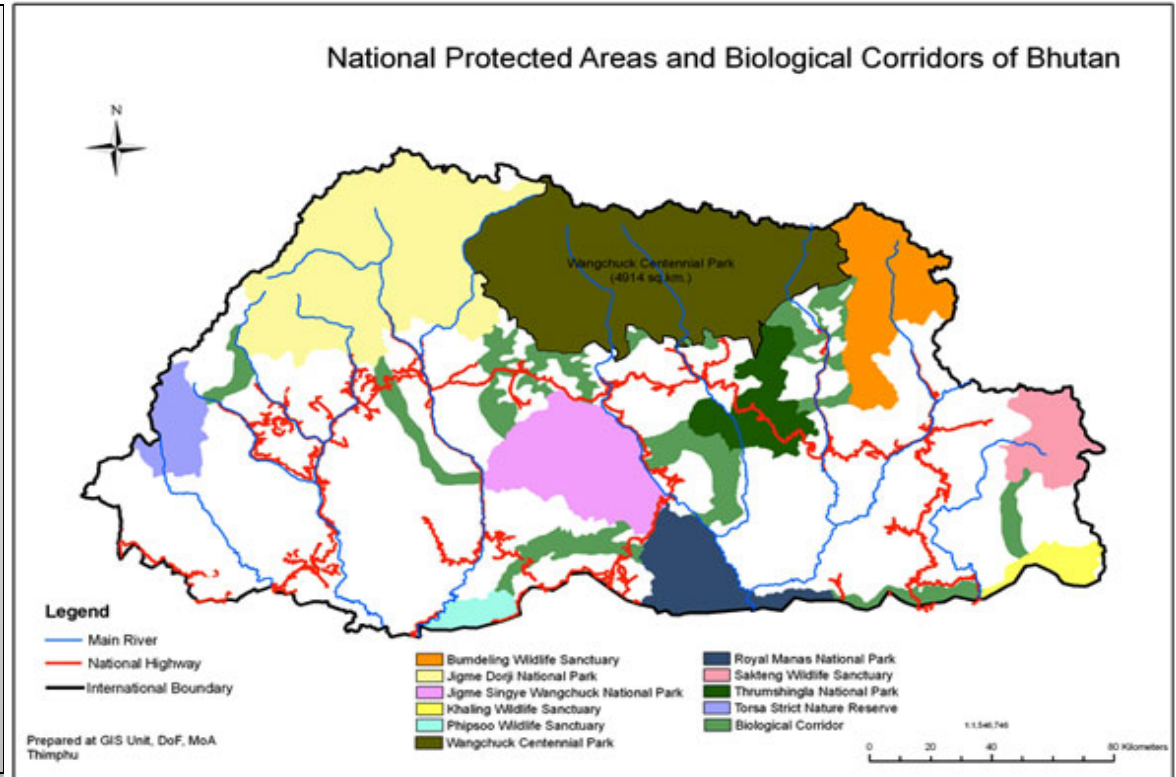
GNH places Environmental Conservation at the core of Development

GNH and Environmental Conservation

- 70% of total land area under Forest cover;
- The constitution of Bhutan mandates Government to ensure a minimum forest cover of 60% for all times to come;
- Bhutan ranks in the top ten percent of countries with the highest species density;
- Voluntarily pledged at Copenhagen to always remain a net carbon sink
- Received Champion of the Earth Award 2005 and J. Paul Getty Conservation Leadership Award (2006) from WWF, USA

Protected Areas of Bhutan

- **5 National Parks; 4 Wildlife Sanctuaries and 1 Strict Nature Reserve;**
- **42.71% under protected area system;**
- **8.61% under network biological corridor;**



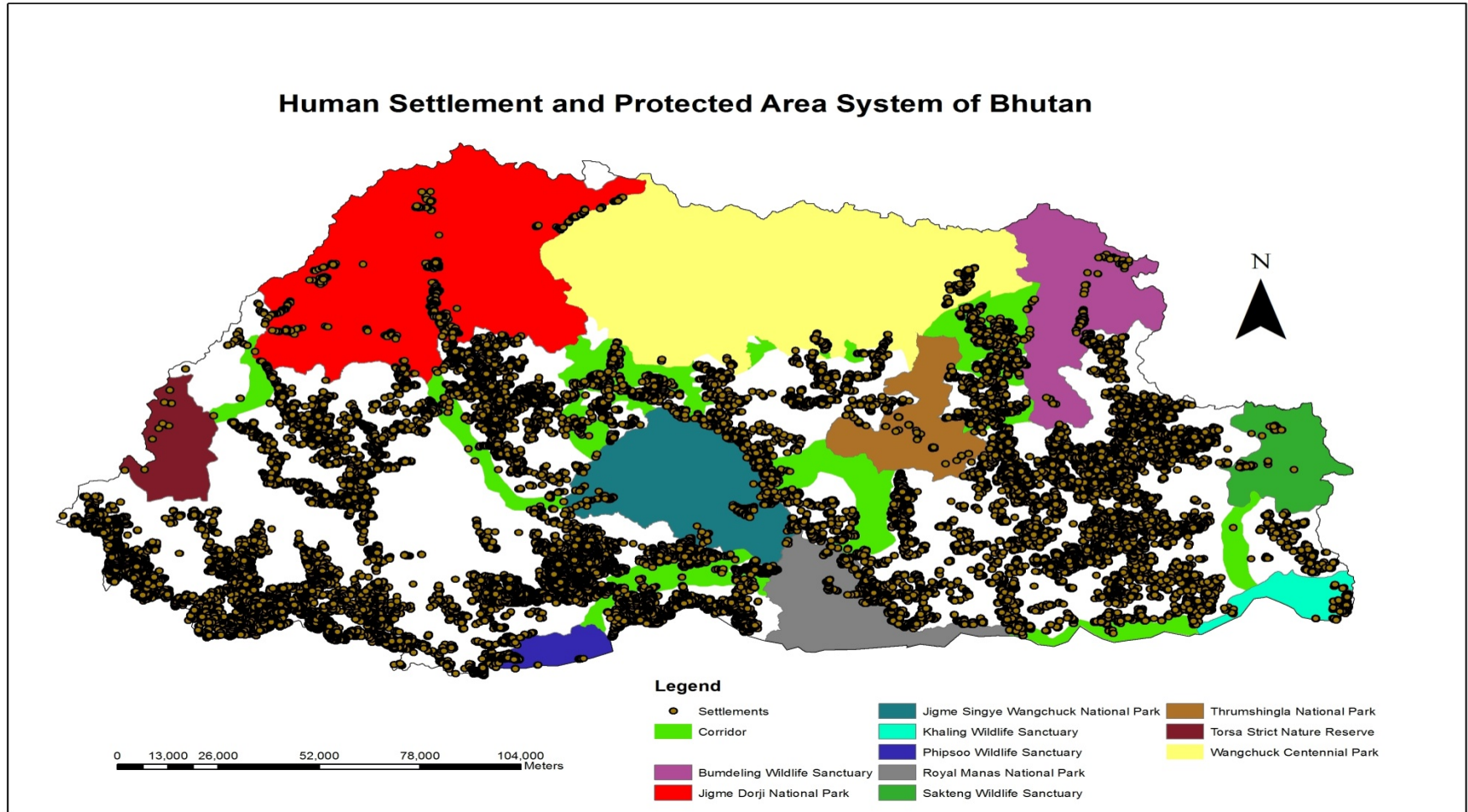
Total area under conservation is 51.32% & represent one of the largest protected areas network set aside as conservation in Asia and elsewhere

Protected Areas of Bhutan



Home to diverse array of flora and fauna including 5603 species of vascular plants, 400 ferns, 200 mammals and over 700 bird species

Contribution of Protected Areas to GNH



- People reside in the parks (>4000 hhs) and depend on natural resources for livelihood.

Contribution of Protected Areas to GNH



Bhutan's ecosystem services valued at USD 15.5 billion per year.

About five times the GDP of USD 3.5 billion per year.

53% of the value accrues to those beyond our borders.

Contribution of Protected Areas to GNH



**Hydropower Sector main
economic backbone of
Bhutan**

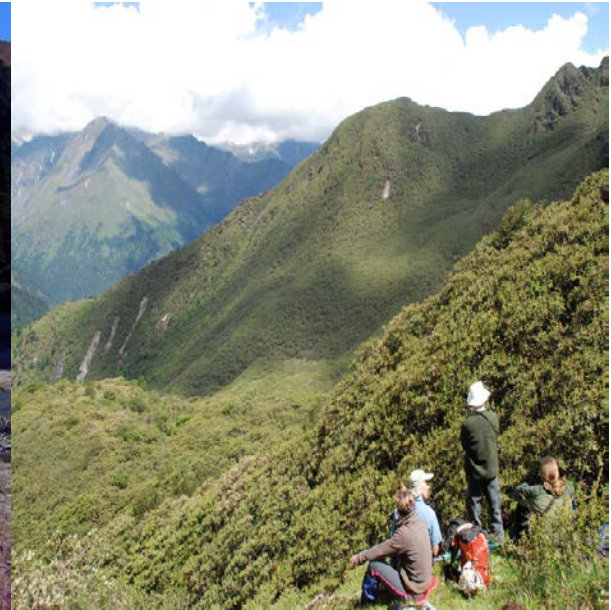
**Potential 30,000
MW**

**Harness 10,000
MW by 2020**

**Commissioned 1500
MW**

**Nu. 10.5 billion
(2012)**

Contribution of Protected Areas to GNH



**Tourism Sector one of the
main drivers of Bhutan's
Economy**

- **Source of Foreign Exchange**
- **Source of Income and revenue**
- **Source of employment**

**Gross earnings in 2012 USD
64 million**

CONCLUSION



Development

- Livestock, CBT tourism and medicinal plants

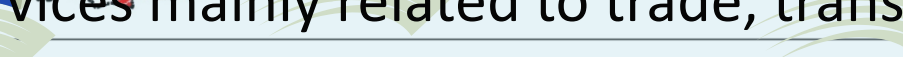


Special Development

- Tourism & Services as mainstay
- High-value goods & Agriculture



Economic Hub

- 
- 0,000 500 1,000 Meters
- This map is compiled based on the Population and Housing Census of Bhutan 2005.
- This map is not an authority on international, administrative or cadastral boundaries.
- This map must not be reproduced or copied in any form or by any means without the prior approval of the Office of the Census Commissioner, Thimphu, Bhutan.
- The Grid does not conform to the DSR Grid
- © Office of the Census Commissioner
- Date: April, 2006
- Services mainly related to trade, transport, storage
 - Industries – especially water, minerals & agro/forest-based



THANK YOU

