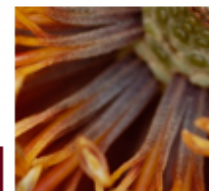




**Australian Government**  
**Director of National Parks**



---

## Service Contract Arrangements

Wreck Bay Aboriginal Community Council & Booderee National Park



Australian Government  
Director of National Parks



# *Walawaani Njindiwan Njin* Booderee

(welcome everyone this is Booderee)







Australian Government  
Director of National Parks

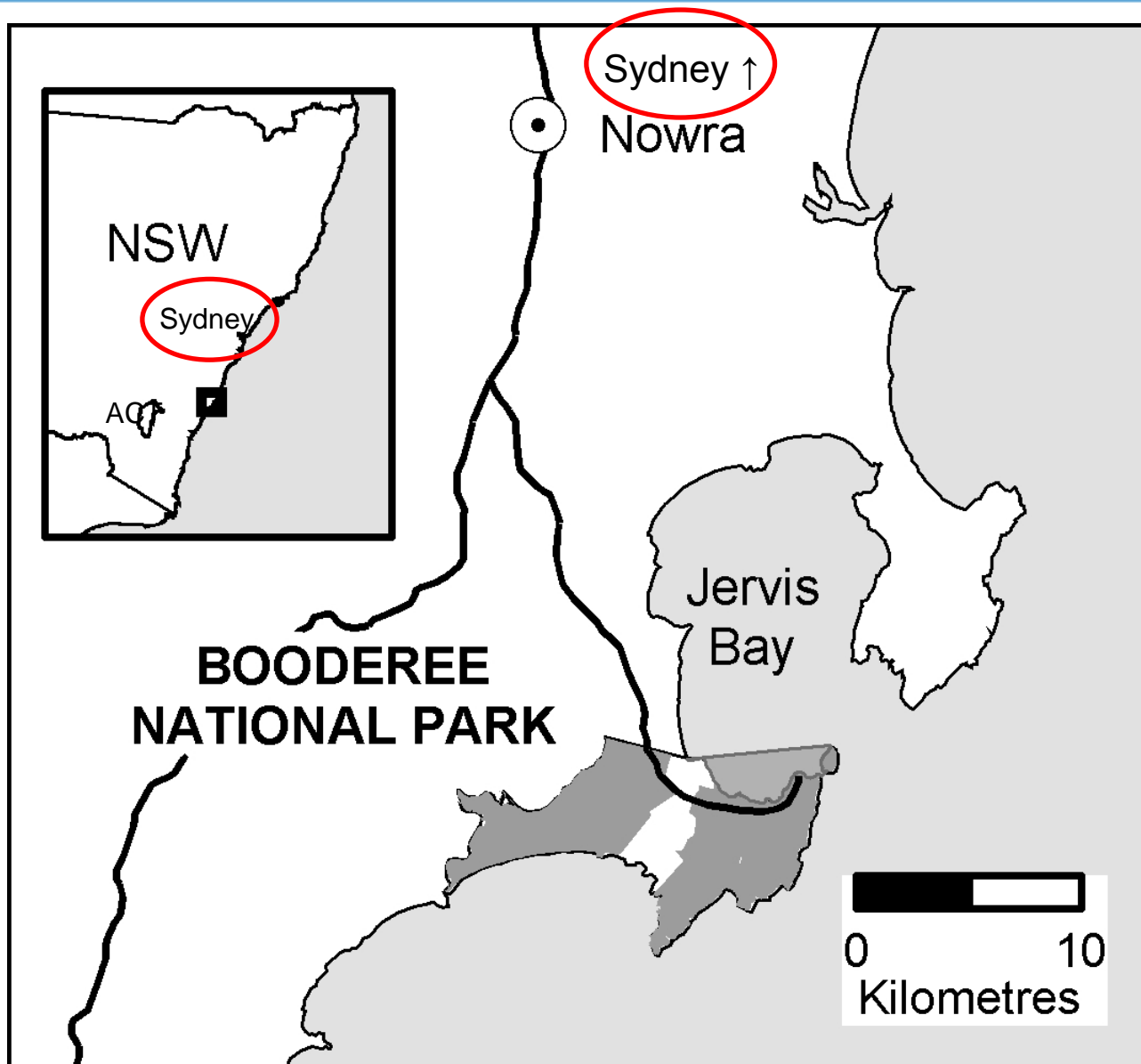


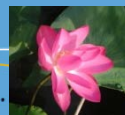




Australian Government  
Director of National Parks



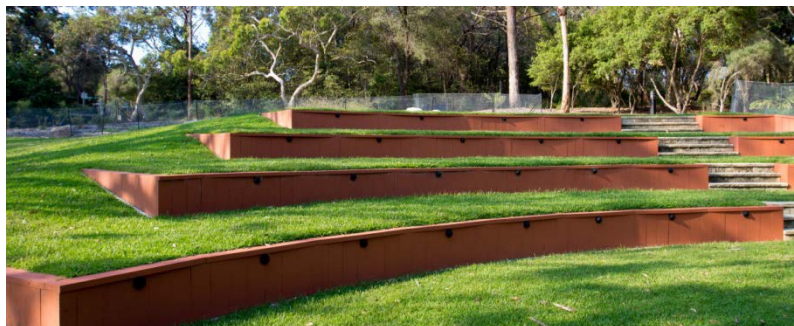
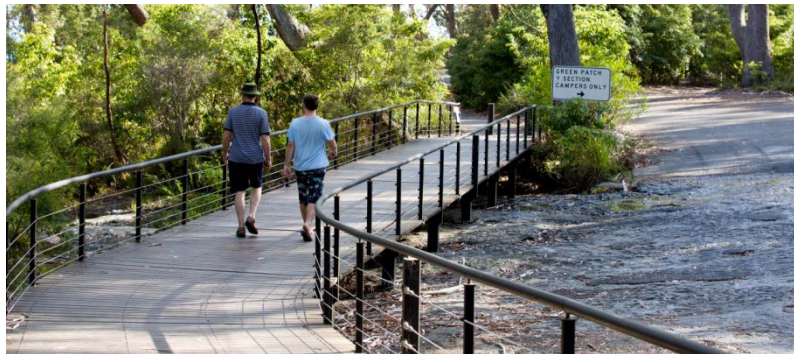








- ☐ Camping
- ☐ Day Use Areas with BBQ's
- ☐ Walking & Service Trails
- ☐ Botanic Gardens





# Important Dates

---

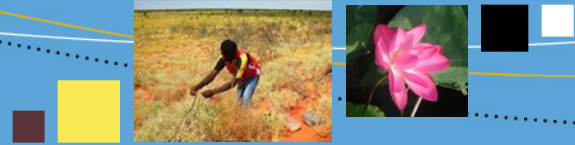
- 1985 *Aboriginal Land Grant ( Jervis Bay Territory) Act 1986* enacted
- 1987 Wreck Bay Aboriginal Community secure land tenure of 403 hectares. Council established.
- 1995 Park land and waters handed back to Wreck Bay Aboriginal Community
- 1995 Park leased back to Director of National Parks for 99 years – 5 year reviews





# Signing of the Lease (reviewed 2003)





# Important Dates

- 1996 Jervis Bay National Park Board of Management established with majority Wreck Bay Community representation
- 1998 Returned to traditional name Booderee National Park to reflect Aboriginal ownership
- 1999 Wreck Bay Enterprises Limited established
- 2002 1<sup>st</sup> Plan of Management
- 2003 1<sup>st</sup> Service Contract commenced





# Key Features of Service Contract

- Legal framework
- Management Committee
- Identifies classes of services
  - exclusive
  - excluded
  - additional
- Benchmarking
- Dispute resolution



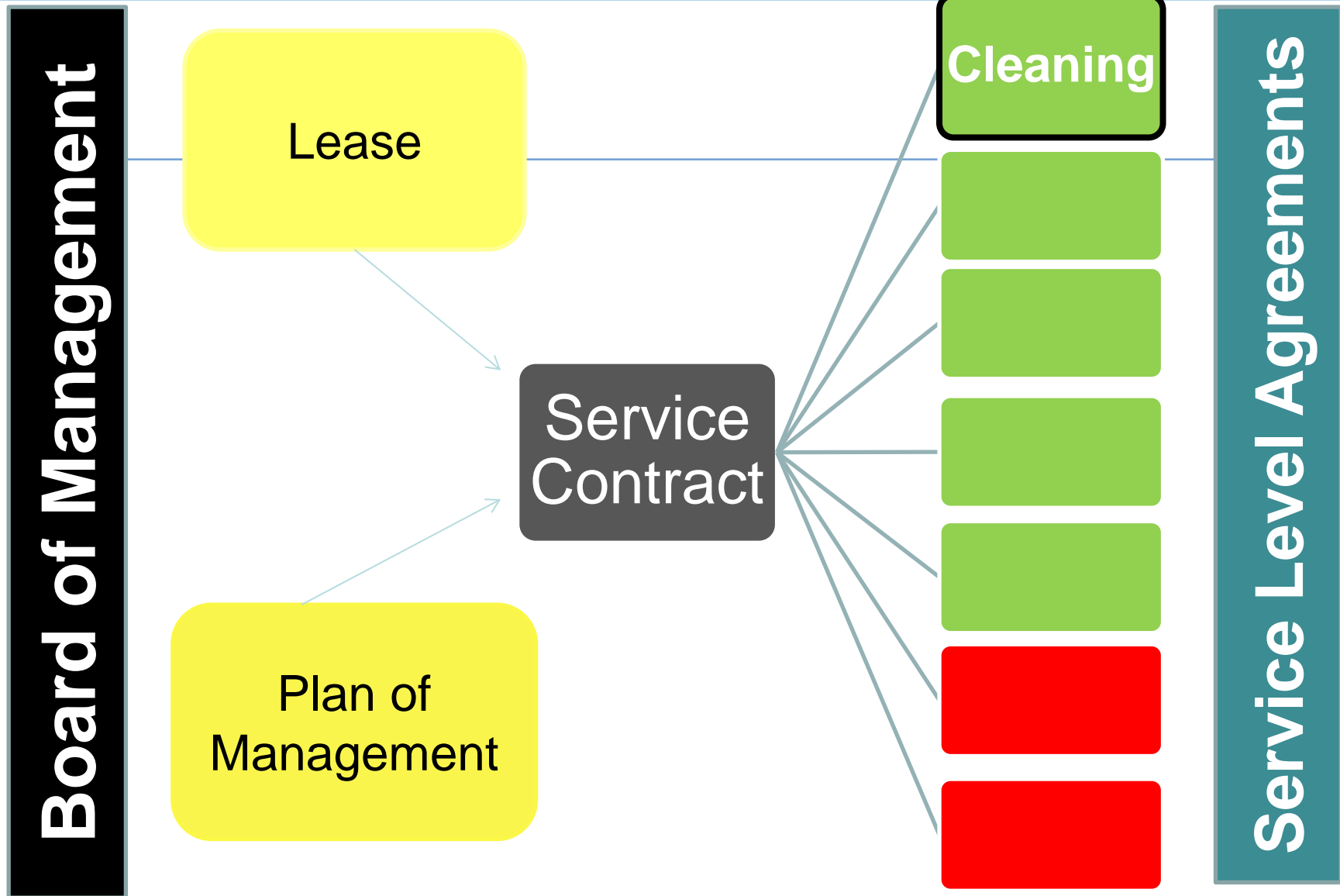


# Key Features of Service Contract

- Value for money
- No additional cost
- Competitive with market prices
- Within available funds

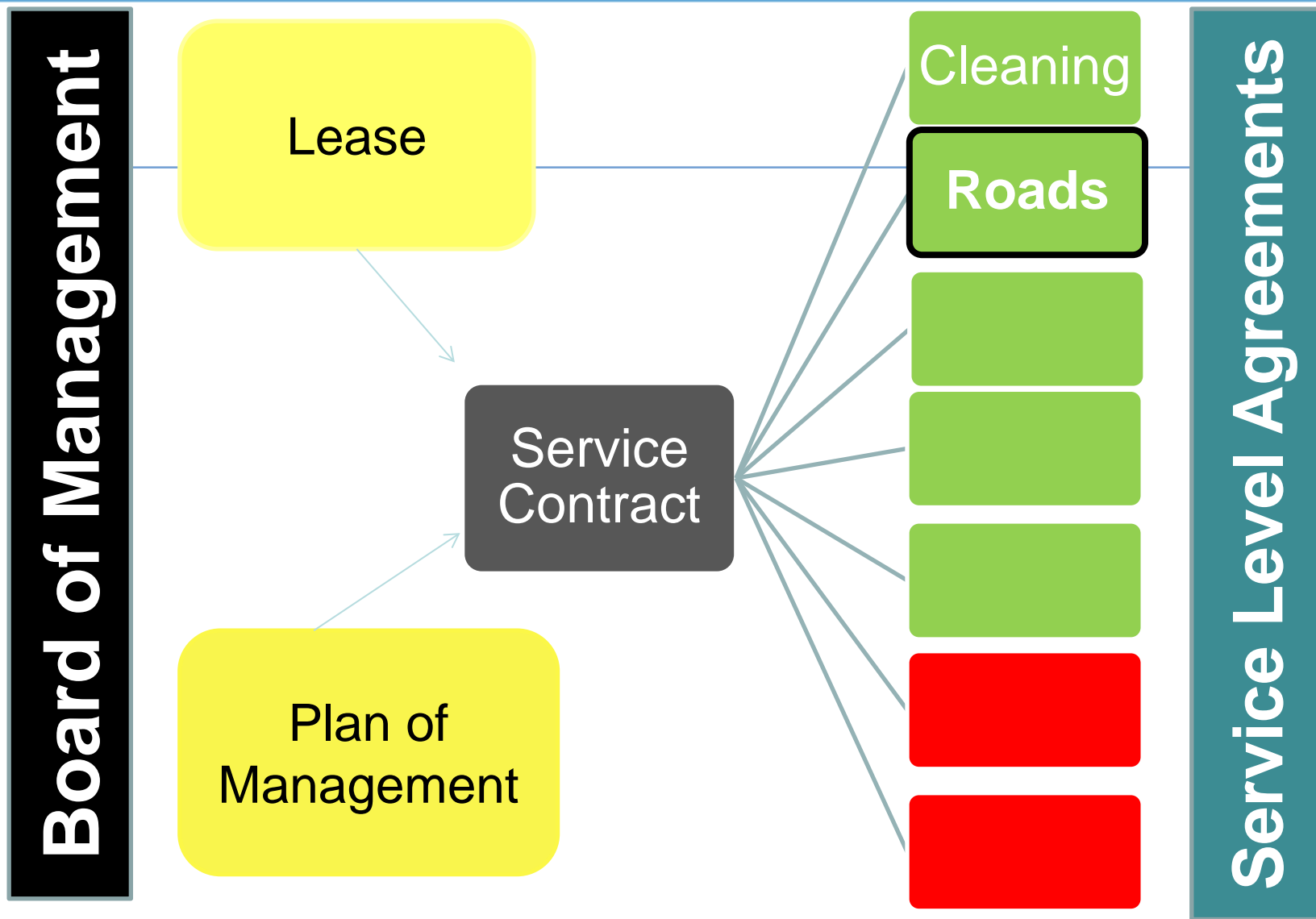
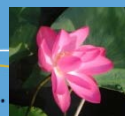










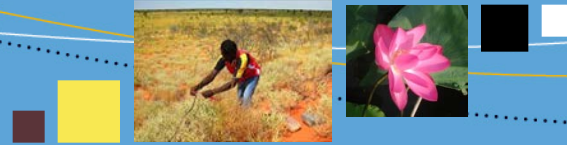








Australian Government  
Director of National Parks







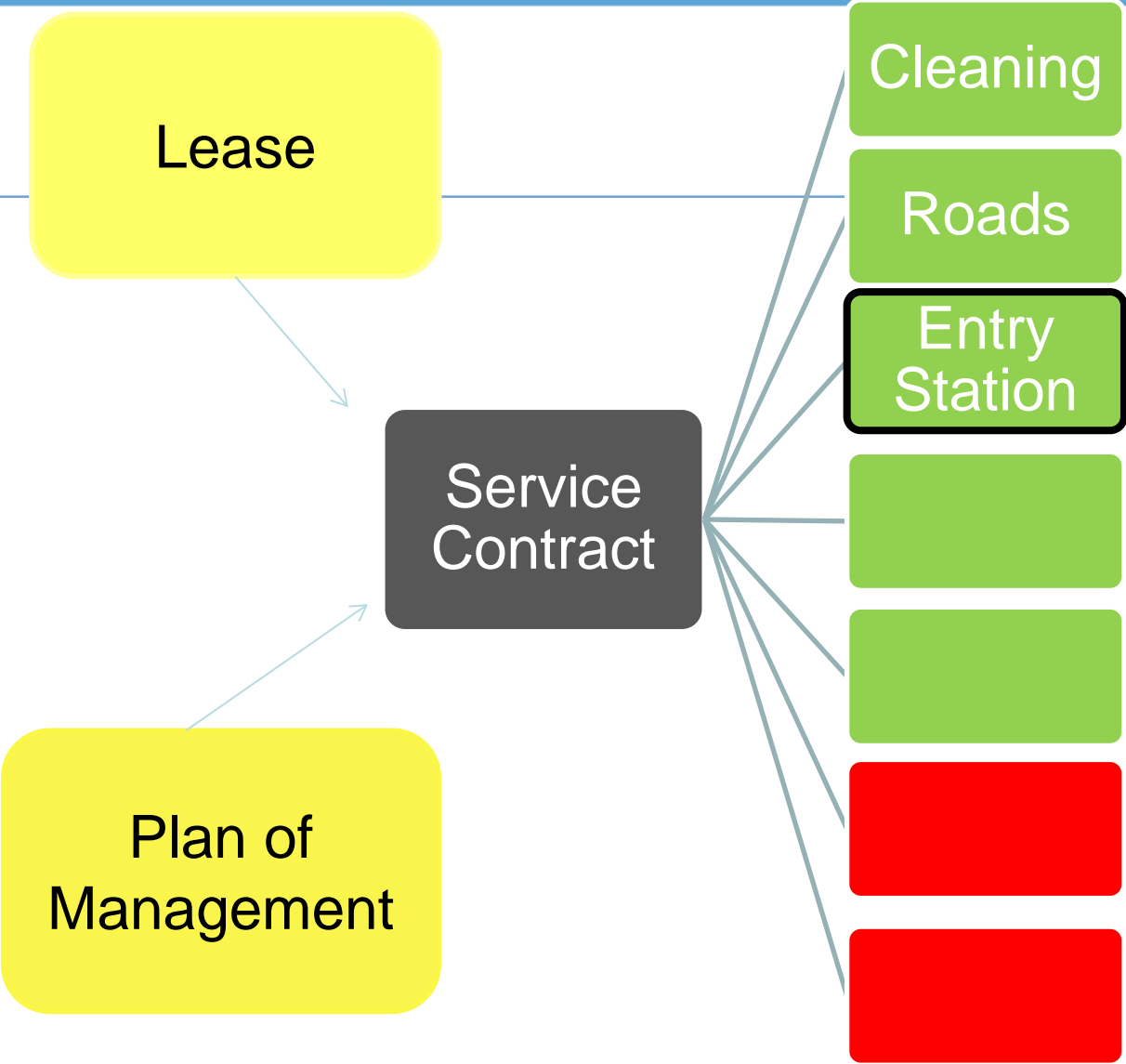
Australian Government  
Director of National Parks







**Board of Management**









**Board of Management**

Lease

Plan of  
Management

Service  
Contract

Cleaning

Roads

Entry  
Station

Buildings

**Service Level Agreements**















**Board of Management**

Lease

Plan of Management

Service Contract

Cleaning

Roads

Entry Station

Buildings

Horticulture

**Service Level Agreements**



Australian Government  
Director of National Parks







**Board of Management**

Lease

Plan of Management

Service Contract

Cleaning

Roads

Entry Station

Buildings

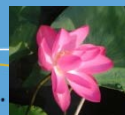
Horticulture

Visitor Centre

**Service Level Agreements**



Australian Government  
Director of National Parks







# Board of Management

Lease

Plan of Management

Service Contract

Cleaning

Roads

Entry Station

Buildings

Horticulture

Visitor Centre

Botanic Gardens

# Service Level Agreements









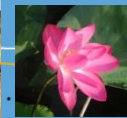






Australian Government  
Director of National Parks





# Benefits

## Wreck Bay Aboriginal Community:

- Contributes to cultural, social and economic wellbeing of the community
- Community preferred contractor status
- Consistent level of routine activities
- Consistent with sole management vision
- Provides Wreck Bay Aboriginal Community Council opportunity to improve business operations/capacity

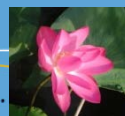




# Benefits

Director of National Parks:

- Consistent with Plan of Management and Lease obligations
- Consistent with wider Government policies re
  - Capacity building of Indigenous communities
  - Indigenous employment
  - Privatisation/outourcing
- Consistent with Government procurement/probity requirements



## Payments to Wreck Bay Aboriginal Community Council for Contract Works

Services	2014-15	2013-14	2012-13	2011-12	2010-11	2009-10
<b>Roads &amp; trails</b>	142,350	458,906	344,898	593,963	846,687	859,018
<b>Cleaning</b>	107,490	392,688	423,054	409,244	400,760	384,149
<b>Entry station</b>	55,432	191,219	192,153	183,612	198,506	197,034
<b>Building</b>	37,750	114,578	146,644	330,490	243,883	237,301
<b>Horticulture / grounds maintenance</b>	32,944	130,168	213,118	140,663	185,366	180,342
<b>Other</b>	112,661	266,394	688,624		27,600	39,067
<b>TOTAL</b>	<b>\$0.5</b> (as at Sept 14)	<b>\$1.55m</b>	<b>\$2m</b>	<b>\$1.6m</b>	<b>\$1.9m</b>	<b>\$1.9m</b>





Australian Government  
Director of National Parks



# Come and visit

