



Ecosystems Protecting Infrastructure and Communities (EPIC): Chile case study



Goal of EPIC

Ecosystems are recognized promoted and conserved

- As an integral part of the of the Disaster Risk Reduction policy, planning and programming in the target EPIC countries.
- In key global process such as in implementation of The Hyogo Framework of action.
- The climate change adaptation framework of the United Nations Framework Convention on Climate Change (UNFCCC).

In Chile the project works in the Biosphere Reserve Corredor Biológico Nevados de Chillán - Laguna del Laja promoting its management and conservation with a focus on Disaster Risk Reduction



IUCN
WORLD PARKS CONGRESS
SYDNEY 2014

Main partners:

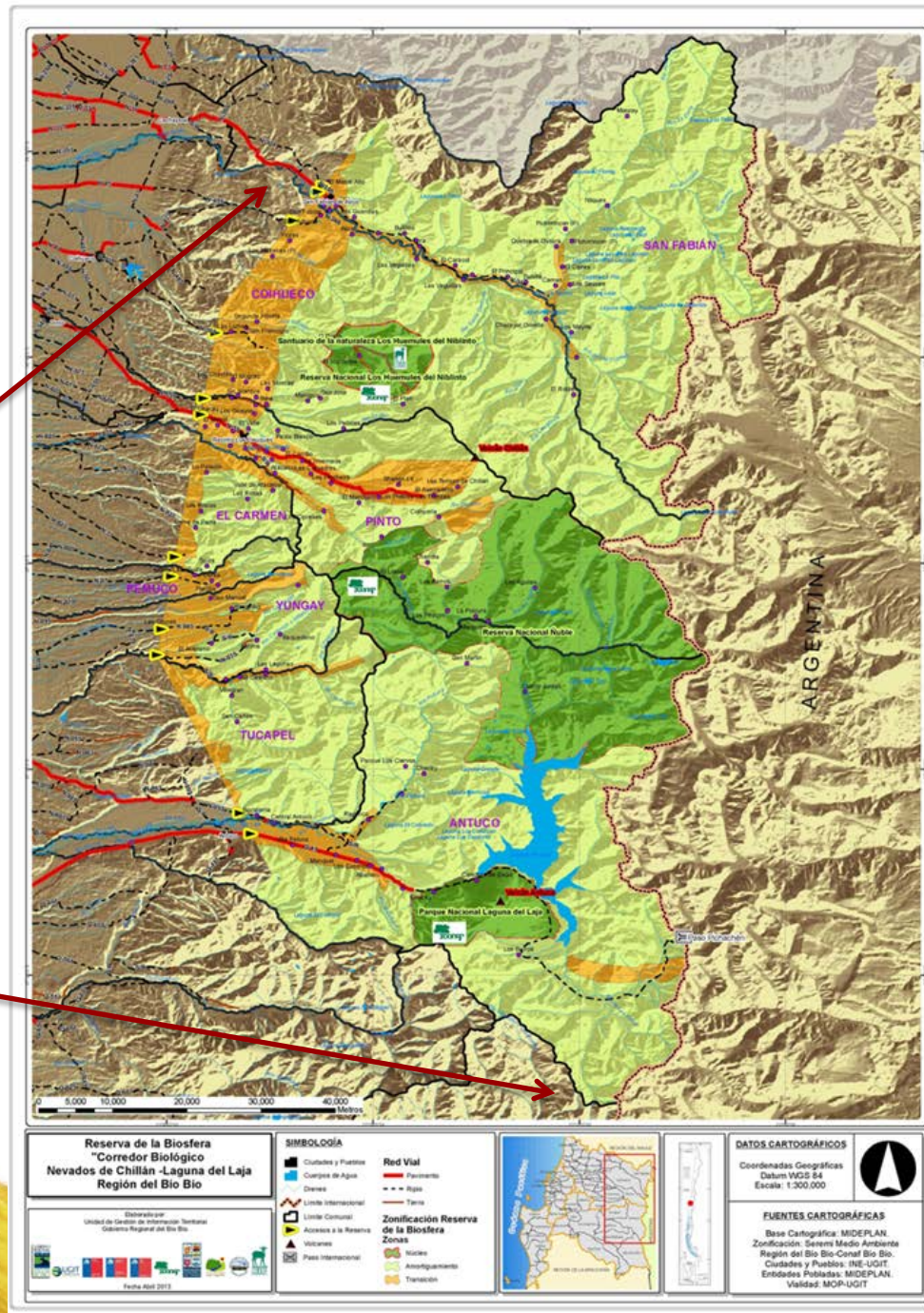


UNIVERSIDAD
DE CONCEPCION



IUCN
WORLD PARKS CONGRESS
SYDNEY 2014

Biosphere Reserve Corredor Biológico Nevados de Chillán - Laguna del Laja



- Northern part of the Patagonia within the Central Chilean zone
- Is a global biodiversity hotspot characterized by an abundance of endemic species
- Dependence of ecosystem services for livelihoods: tourism, water and landscape beauty
- The Reserve management is structured by a board management, that is represented for 29 public, private, NGO's and Universities institutions and chaired for the Mayor of the Biobio Region the high authority of the regional Government.



IUCN
WORLD PARKS CONGRESS
SYDNEY 2014

*Main
climate
threats*

Droughts & Forest fires

Heavy snow avalanches

**What
is the
project
doing**

INNOVATIONS
proposed by local
stakeholders to
address climate
change threats

**Scientific studies on
droughts & forest fires,
ecosystem services**
Complimentary studies

SCIENTIFIC STUDY
on avalanches
Main case study

**Capacity building,
communication and
advocacy ***

* Activity carry out at national level



IUCN
WORLD PARKS CONGRESS
SYDNEY 2014

Droughts & Forest fires

Heavy snow avalanches

INNOVATIONS

Create a Water Management Committee

Promote Sustainable Forest Management *

Promote Sustainable Energy Consumption **

Create an entity to promote the Biosphere Reserve sustainable management and conservation and & Ecotourism **

* Planning process with IUCN support

** Under implementation by the Regional Government



SCIENTIFIC STUDIES

Droughts & Forest fires

Heavy snow avalanches

Quantifying and Improving the Protective Capacity of Forests against Snow Avalanches
Main case study

Forest fires and droughts studies
Complimentary study

Ecosystem services studies
Complimentary study

* The studies will provide information to government agencies and civil society for **decision making** regarding the Biosphere Reserve management and conservation.

**Capacity building,
communication and
advocacy**

**Link between local and
national planning on
Disaster Risk Reduction and
Climate Change Adaptation**

**Capacity building and
communication**

**Multi-stakeholders
dialogues (advocacy)**

The project is
considered as a
measure of the
new **Climate
Change
Adaptation Plan
on Biodiversity**

Lessons learnt

- The project has played a key role in creating links between local stakeholders – government and civil society – aiming to promote the Biosphere Reserve management and conservation
- Opportunity to promote multistakeholder dialogues on DRR and CCA at local and national level
- All the local and regional stakeholders, noted that it is required bigger commitment and political will to manage the Reserve
- The project worked like a catalyst to promote studies of DRR, Climate Change Adaptation within the Protected Areas
- Opportunity to influence planning processes at local and national level

THANK YOU



IUCN
WORLD PARKS CONGRESS
SYDNEY 2014