

Tla-o-qui-aht Tribal Parks



Establishing ICCAs in British Columbia, Canada

Eli Enns BA JSC
Regional Coordinator
North American ICCA Consortium
University of Victoria Center for Global Studies

Who and Where are Tla-o-qui-aht?



**Tla-o-qui-aht are of the
Nuu-chah-nulth
Sovereign Nations and
the Clayoquot Sound
UNESCO Biosphere
Reserve on the west
coast of British
Columbia, Canada**



Who and Where are Tla-o-qui-aht?



**Tla-o-qui-aht are
“potlatching peoples”
who believe in the
power of Reciprocity as
a balancing force in
social-ecological
resiliency**



What are Tribal Parks? And why?

Tribal Parks in theory and law:

1) Traditional governance implementation *exercises* - applying the teachings of our ancestors in a modern context. Language, culture and traditional governance form the core of Tribal Parks.



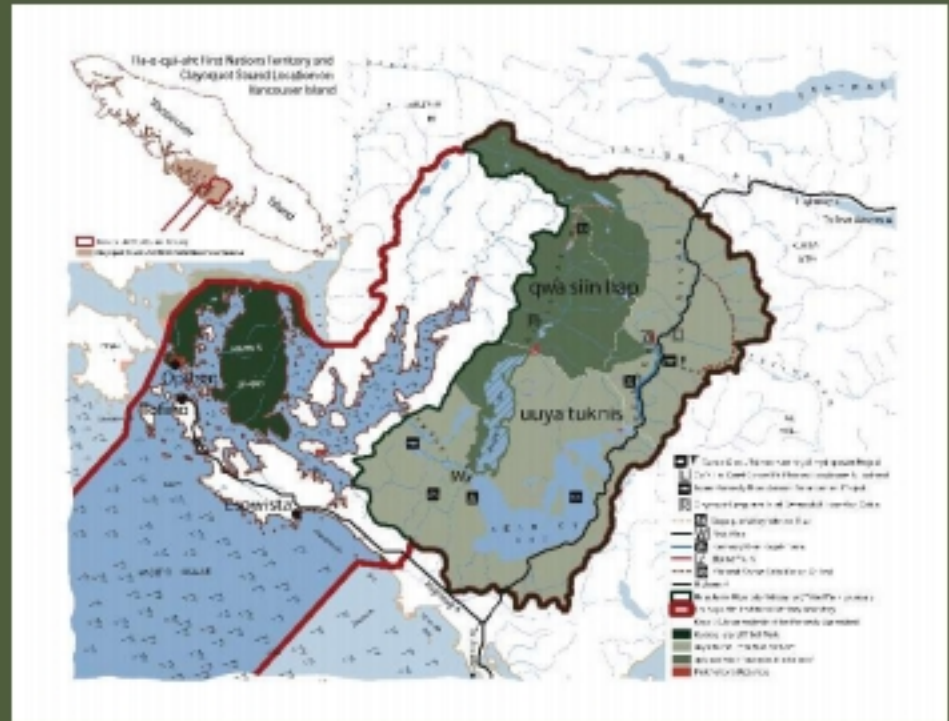
2) Section 35 (Canada Act 1982) Assertion *strategies* with an emphasis on "responsibilities" and "rights". Section 35 is a tool available to apply our traditional governance principles in practice.

3) Adherence *measures* to the 2001 UN Convention on the Responsibility to Protect (R2P). R2P created a caveat on State Sovereignty - the protection of "Human Security" which includes Environmental Security.

What are Tribal Parks? And why?

Tribal Parks in practice are:

1) **Indigenous Watershed Governance Areas** which include environmental stewardship, cultural restoration/social justice and sustainable economic development objectives.



2) **Stakeholder management** approaches which function as international conflict resolution processes geared towards fostering positive peace.

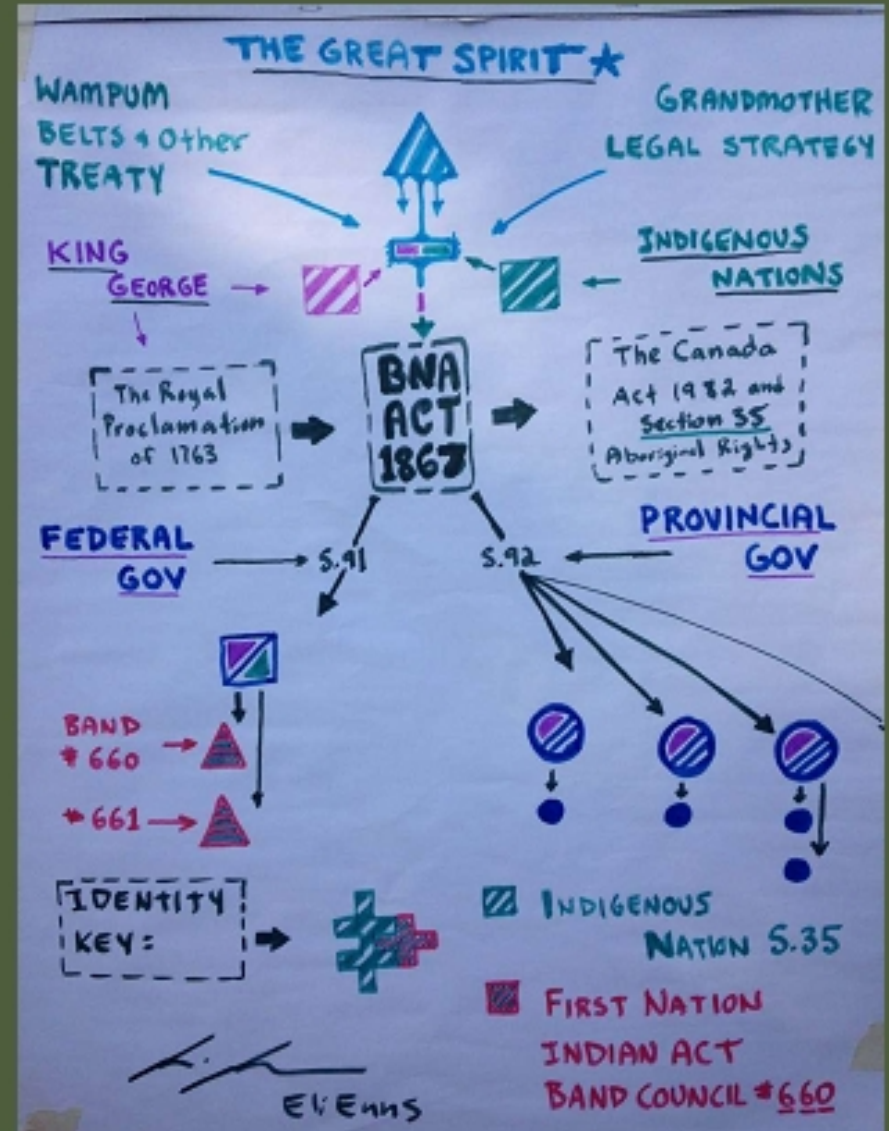
3) **Monitoring regimes** to enable Nation guardian programs "boots on the ground", and built environment branding techniques to extend Nation territorial presence.

In the Canadian Context?

The evolution of Canadian Constitutional Law and geopolitics



British Columbia joins the Dominion of Canada as the sixth province.



Can Tribal Parks be recognized as ICCAs?



YES!

Why is this important to the World Parks Congress?



Establishing Tribal Parks in Canada is an part of the reconciliation between Indigenous Peoples and the state government. A more balanced relationship at home will foster a healthier role for Canada in the international community.

The Tribal Park model can be mobilized beyond Canada.



END

Eli Enns
Regional Coordinator, North America
ICCA Consortium
www.iccaconsortium.org
Email: eli@iccaconsortium.org
Skype: eli.enns27