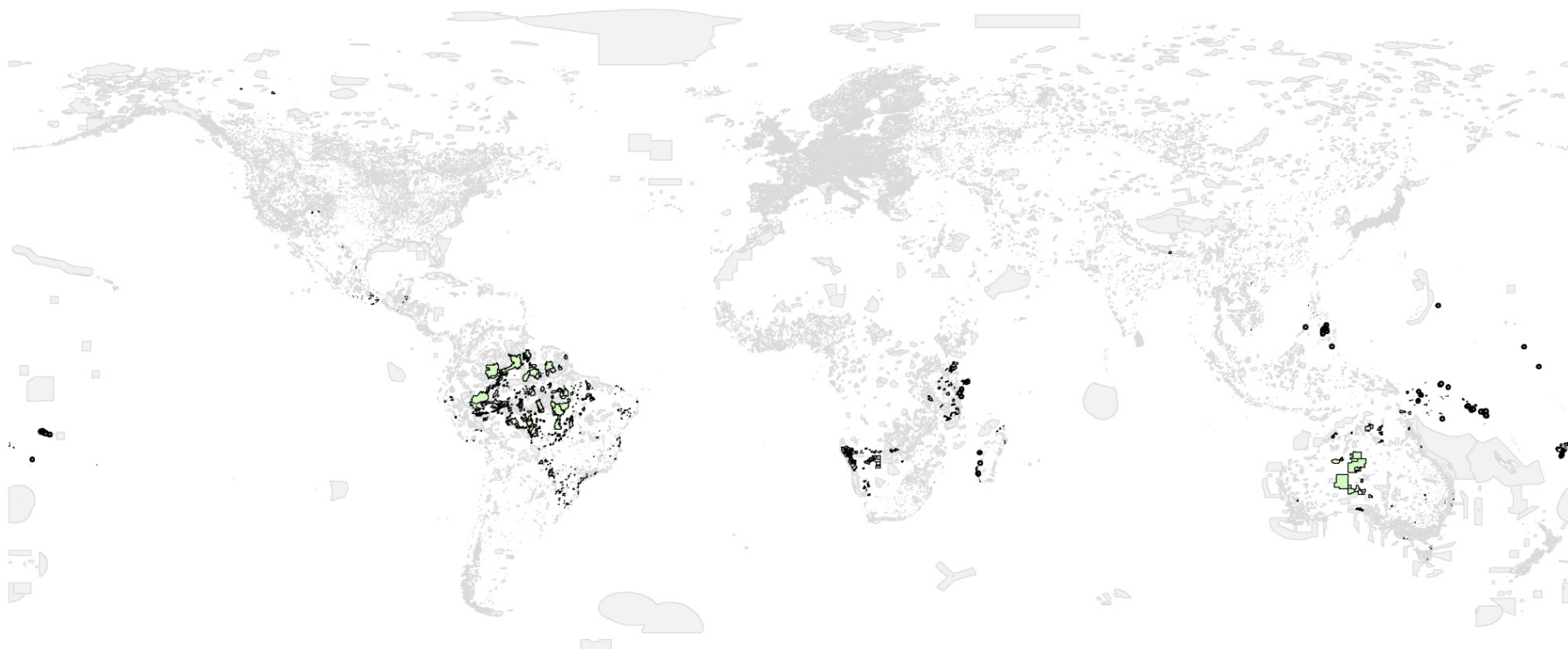


ICCAs in the World Database on Protected Areas



WDPA, September 2014



www.protectedplanet.net

Only 1501 (0.7%) are ICCAs

Several reasons:

- The WDPA is dominated by PAs under the governance of governments
- Most data are provided by governments
- Governments do not always recognise ICCAs as part of their national PA systems

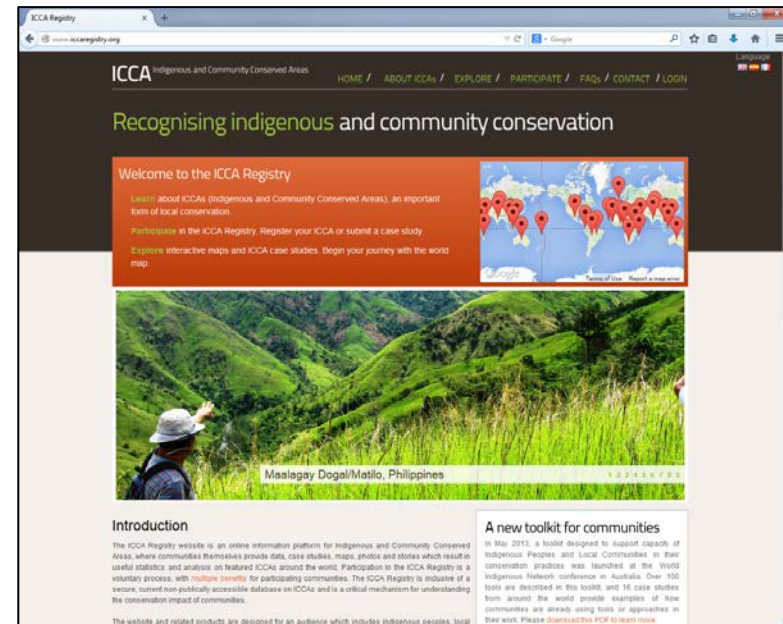
Improving representation of ICCAs in the WDPA

Advantages

- The important contributions of ICCAs to national and global-level conservation will be given greater recognition
- They will contribute to understanding of progress made towards international conservation targets
- The database will contribute to a growing body of knowledge that can inform conservation and other policies relating to the positive influence of community-based governance

Drawbacks

- Unwanted or increased attention
- Undesired inclusion in national PA systems



How?

- Data can now be submitted to the WDPA by anyone
- Data contributors for an ICCA must have the consent of the relevant community
- We will ensure the validity of data using government and non-government expert verifiers
- The WDPA will accept data on sites that are not 'protected areas' but still make a contribution to conservation in the long-term

To contribute data, or for more information, contact:
Heather Bingham, Protected Areas Programme, UNEP-WCMC
Heather.bingham@unep-wcmc.org