

Challenges of Protecting the High Seas

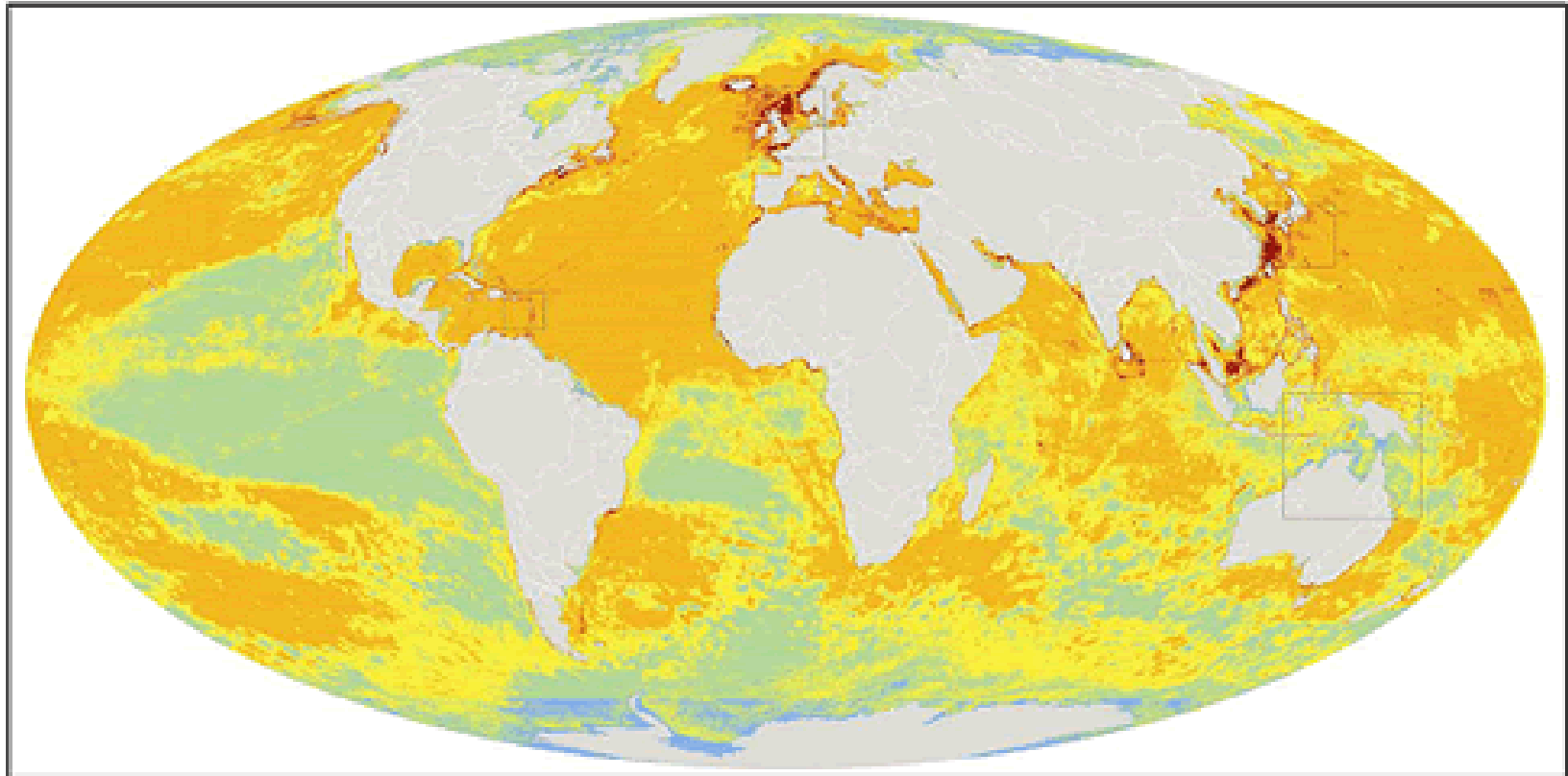
Richard Page

World Parks Congress
Sydney
15 November 2014

GREENPEACE

www.greenpeace.org

More than 40% of the world's oceans have been heavily impacted by human activities



(c) Halpern et al. 2008

Aichi Biodiversity Targets 2020

CBD COP 10, 2010

11. “By 2020, at least ... **10 per cent** of coastal and marine areas, especially areas of particular importance for biodiversity and ecosystem services, **are conserved** through effectively and equitably managed, **ecologically representative** and well connected **systems of protected areas and other effective area-based conservation measures**, and integrated into the wider landscapes and seascapes.”,

A world map showing the distribution of protected areas. The map uses a color scale where blue represents the high seas and orange represents protected areas. The protected areas are scattered across the globe, with notable concentrations in the North Atlantic, the Mediterranean, and the Indian Ocean. The map includes a grid of latitude and longitude lines.

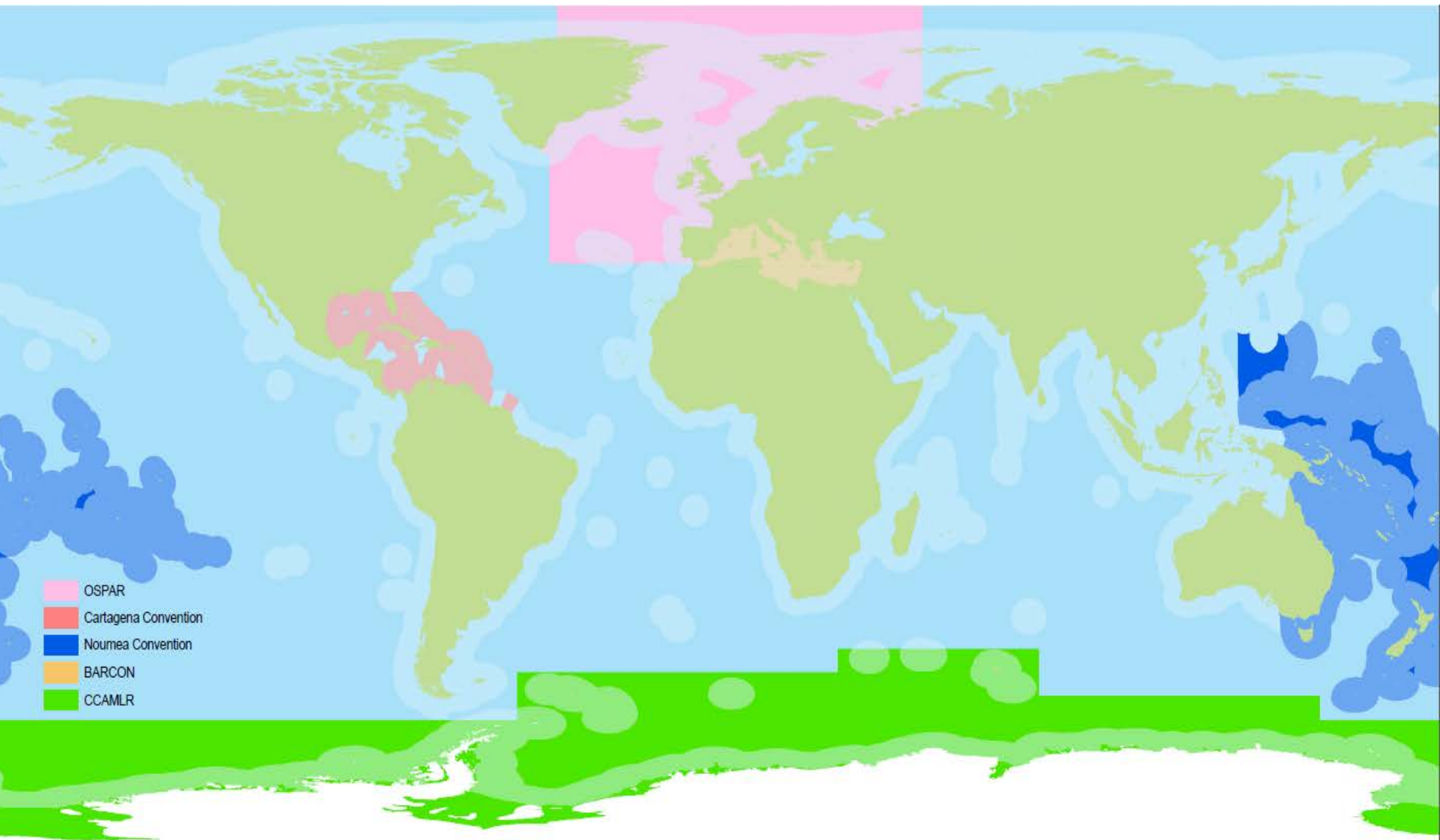
Less than 1% of the high seas is protected

World Database on Protected Areas-
WDPA-
@ protectedplanet.net

GREENPEACE

www.greenpeace.org

Blue = no Regional Seas Convention with high seas remit





GREENPEACE

www.greenpeace.org



Thanks & let's stay in touch

@Oceans Richard

GREENPEACE

www.greenpeace.org