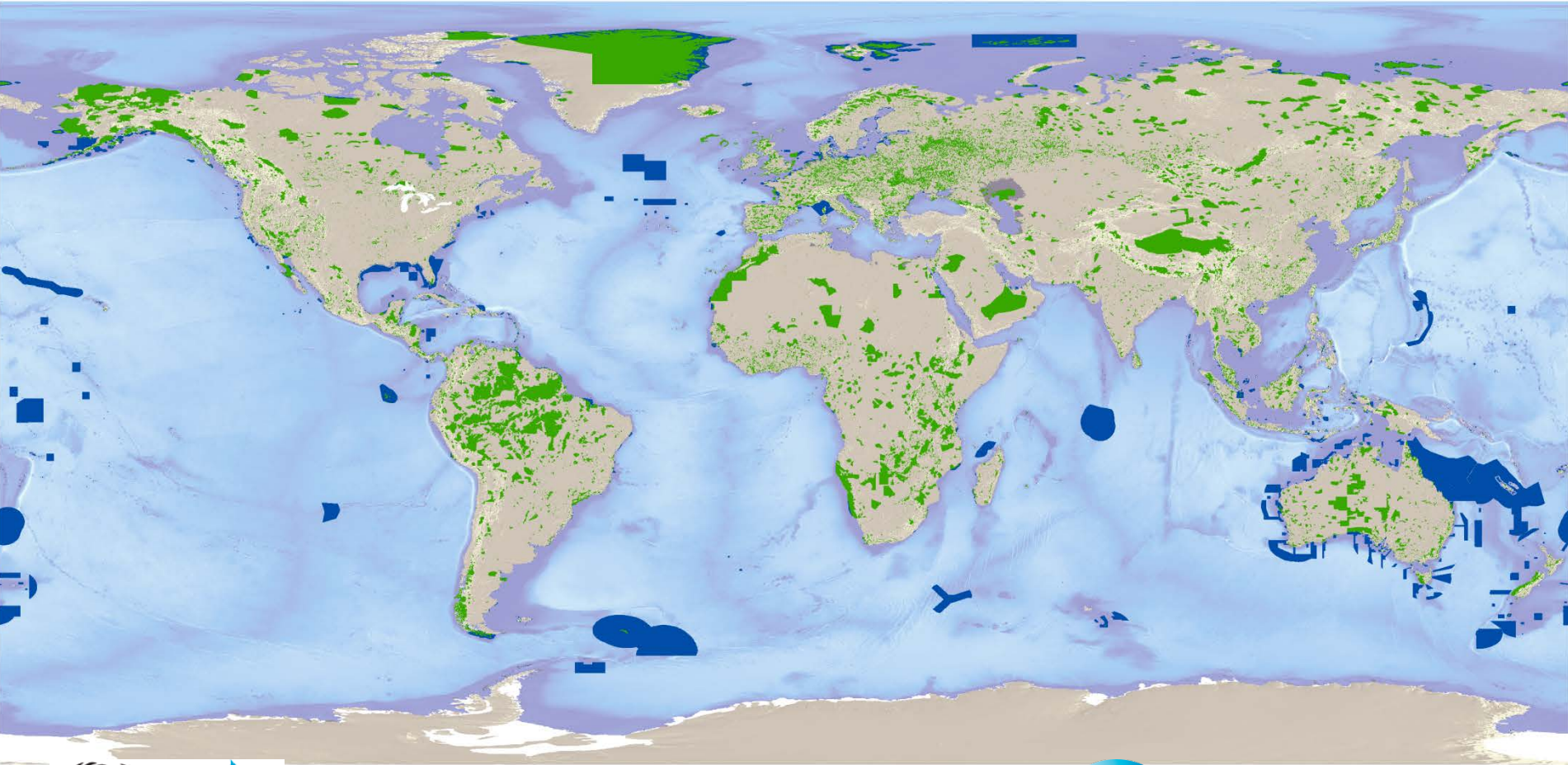


WDPA Clinics – private conservation initiatives



1. What is the WDPA?

- The only global database on terrestrial and marine protected areas.
- A joint initiative between the United Nations Environment Programme (UNEP) and the International Union for Conservation of Nature (IUCN).
- Compiled and managed by the UNEP World Conservation Monitoring Centre (UNEP-WCMC) in collaboration with governments and non-governmental organizations.

1. What is the WDPA?

Attribute information provided by WCMC

WDPA ID
WDPA PID
METADATA ID
GIS area
GIS marine area
International Criteria

Attribute information requested

Name
Country: Parent ISO3, ISO3
Designation
Designation Type
Marine
Reported Marine Area
Reported Area
Status
Status Year

Minimum

Original Name
Sub-National Location
Designation (English)
IUCN Category
Governance Type
Management Authority
Management Plan (url)
No take
No Take Area

Complete



Polygons

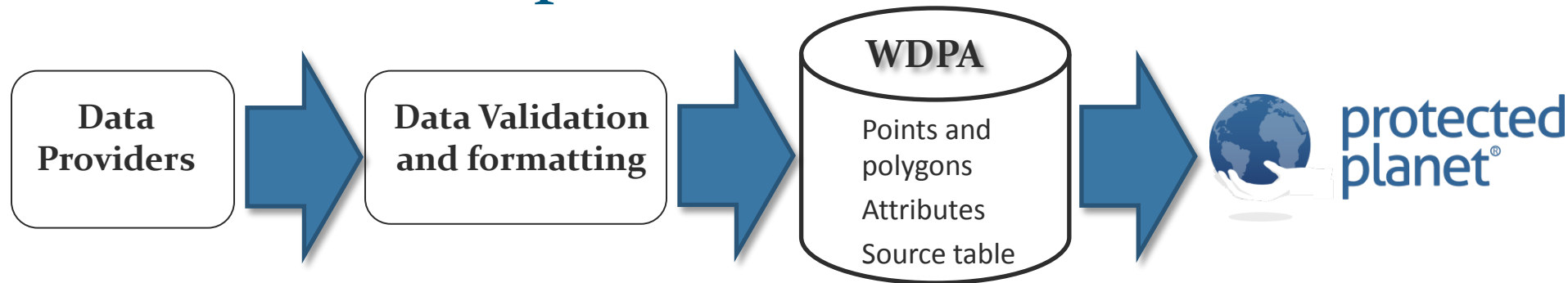
Source
Table

Points

+ Attribute
information

+ Attribute
information

2. How is it compiled?



➤ Data in the WDPa are primarily compiled directly from governments. We also source data from NGOs, and other authoritative sources

➤ Data is validated and formatted to comply with the WDPa data standards.

➤ New verification process

➤ Data can be visualised, explored and downloaded at www.protectedplanet.net

4. Uses of the WDPA

Publications & indicators

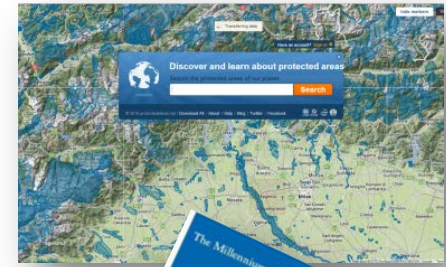
- Millennium Development Goals (Goal 7)
- CBD Aichi Targets
- Global Biodiversity Outlook
- Protected Planet Report (bi-annual)
- Global Reporting Initiative

Online systems

- MPA Atlas
- DOPA
- Protected Planet
- IBAT

Multiple sectors

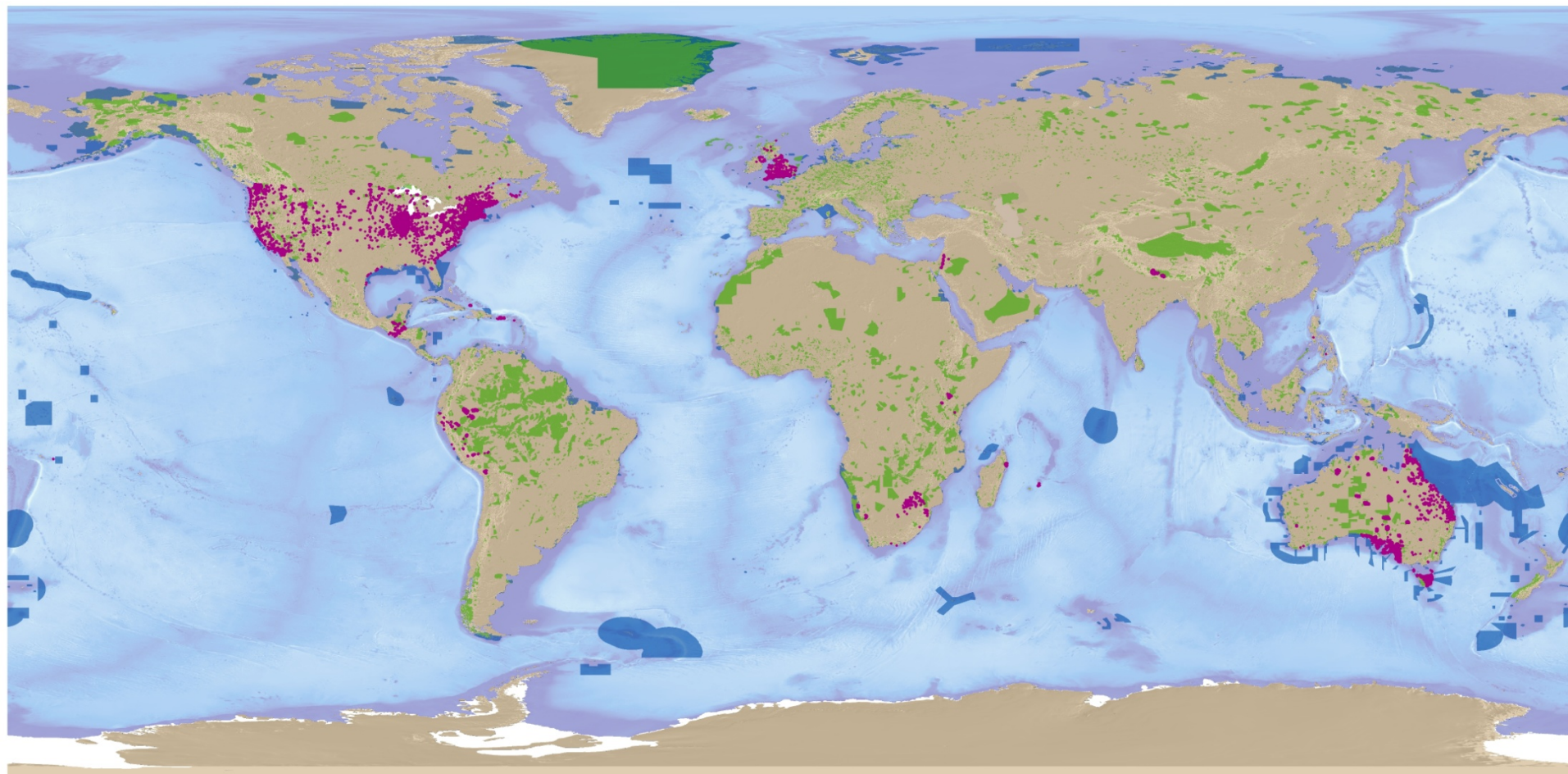
- Business, bank & industry users
- Scientists & researchers
- Government, NGO & communities



9515 PPAs in the WDPA

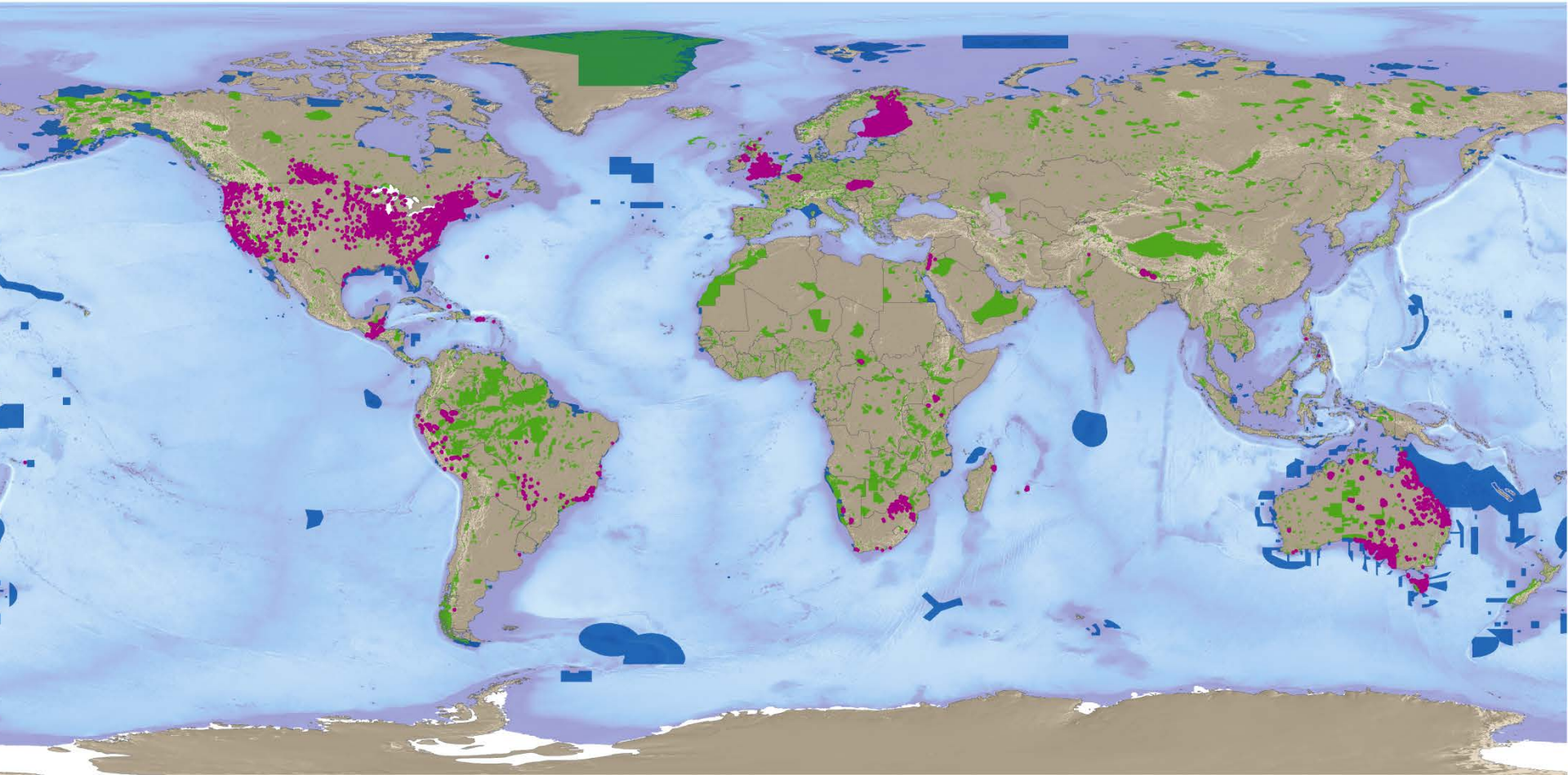
Governance type:

- Non-profit organisations: 5308
- For-profit organisations: 1137
- Individual landowners: 3070

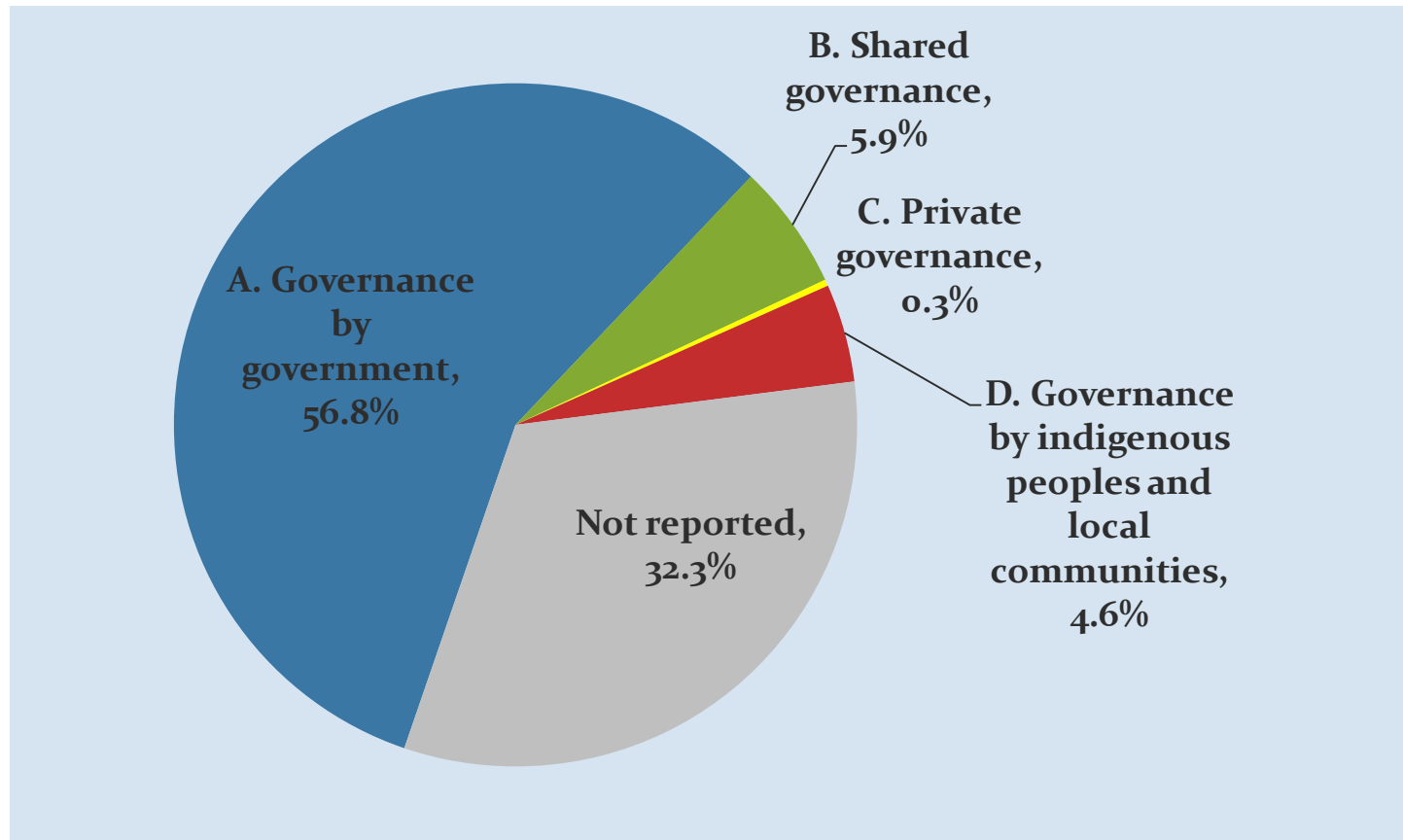


WDPA, September 2014

10,373 PPAs when other attributes included

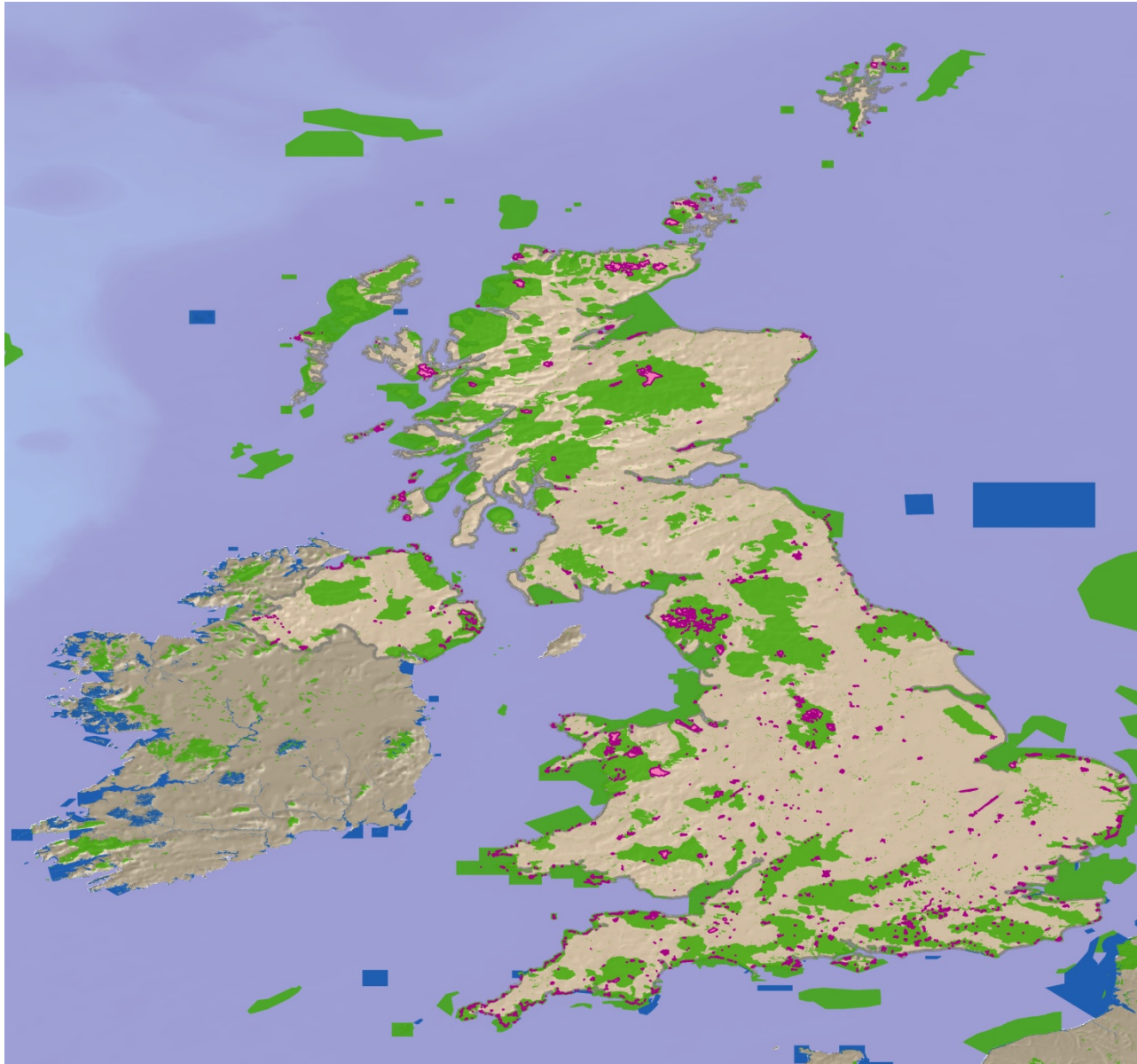


0.3% of coverage in the WDPA



WDPA, September 2014

Putting Nature on the Map – 797 UK PPAs in the WDPA



1. What is the WDPA?

New proposed attributes

New Attribute	Description
Protected Area Definition (Minimum)	Does the site meet the IUCN definition of a PA? 1/0
Verification (UNEP-WCMC assigned)	Who verified the data? State verified/ Expert verified
Ownership Type (Complete)	Who owns the site? Fixed values
Restrictions (Minimum)	Is use of the data restricted? For UNEP-WCMC use.

Changed Attribute	Change
Designation Type	National/Regional/ International/ Undesignated
Status	Designated/ Proposed/ Established
Marine	0 (Terrestrial)/ 1 (Part marine)/ 2 (Marine)

Thank you!

Merci!

Gracias!

Спасибо!

谢谢!

شكر

Explore the WDPA!
www.protectedplanet.net

Follow us!



@protectedplanet



Protected Planet

Contact us!
protectedareas@unep-wcmc.org