



IUCN
WORLD PARKS
CONGRESS
SYDNEY 2014

Workshop 3.3 : “Effective and equitable governance of the seascape”

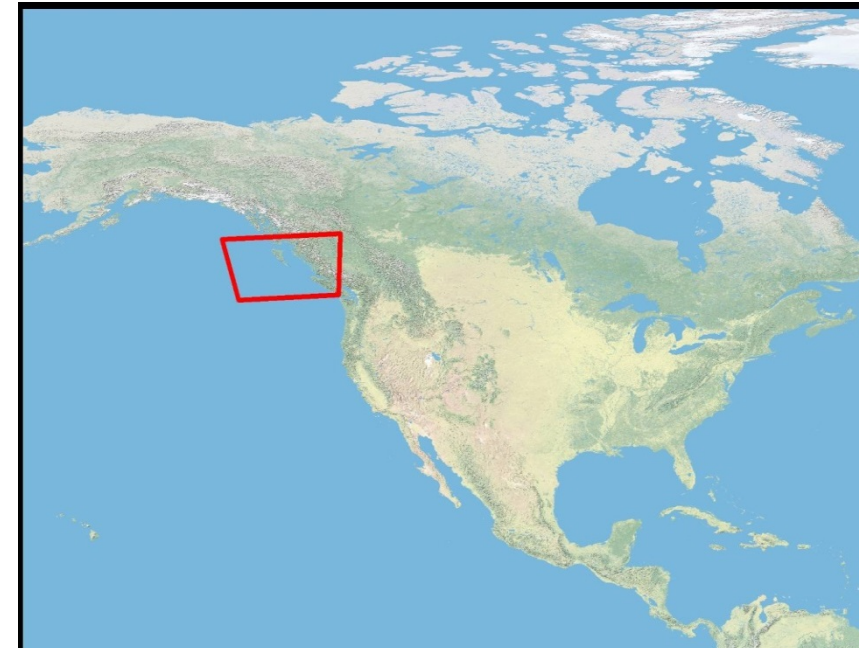
17th Nov. 2014; 8.30 - 12:15 pm

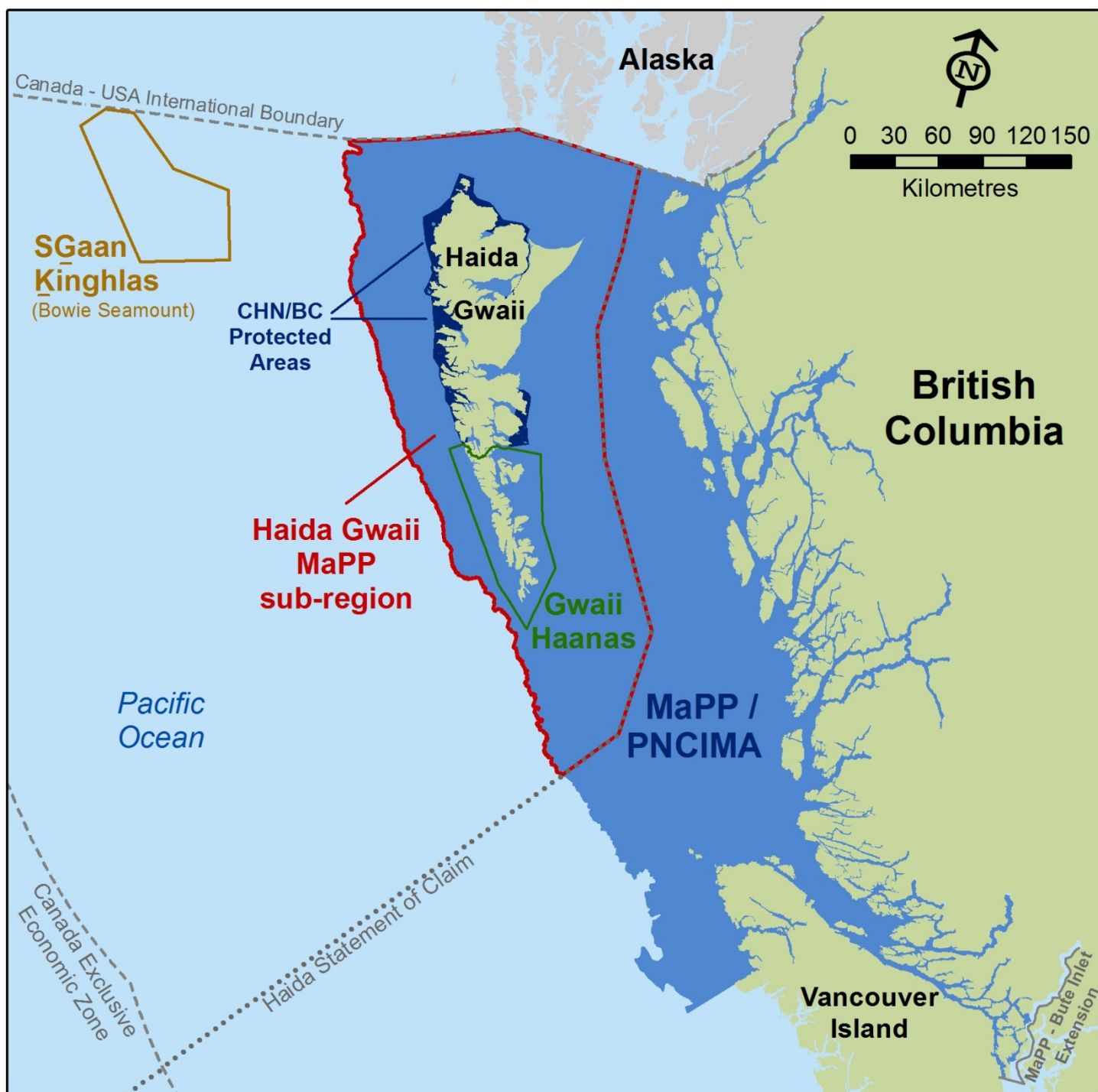
Haida Gwaii Marine Planning and Implementation

By: Russ Jones

Council of the Haida Nation

russ.jones@haidanation.com

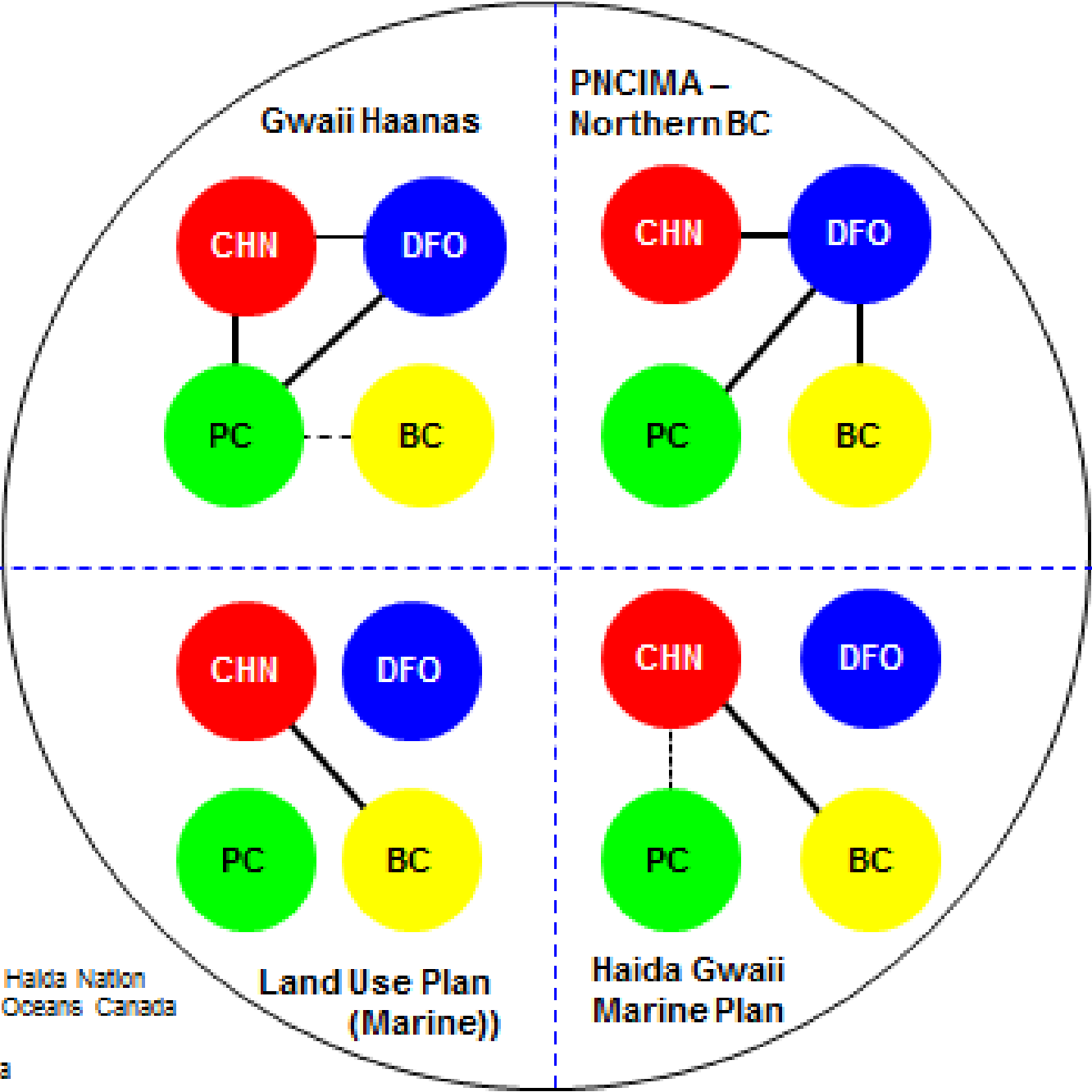




5 Marine Processes

- Gwaii Haanas
- Land Use Heritage Areas/Conservancies
- SGaan Kinghlas - Bowie Seamount MPA
- Pacific North Coast Integrated Management Area (PNCIMA)
- Haida Gwaii sub-region

Relationships & Governance



CHN - Council of the Haida Nation
DFO - Fisheries and Oceans Canada
PC - Parks Canada
BC - British Columbia

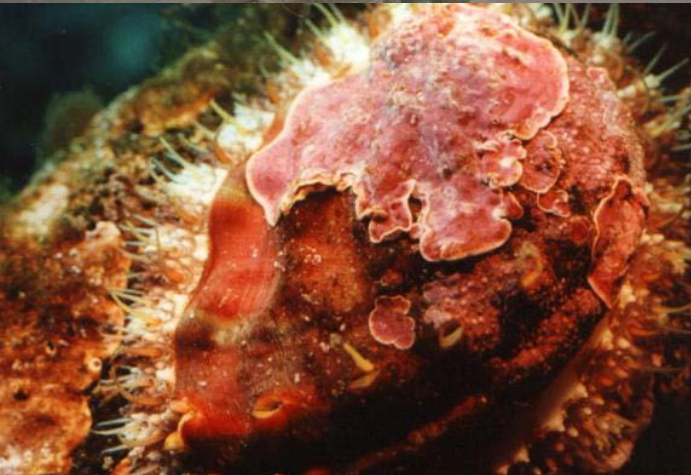


Two Governance Models

- Archipelago Management Board:
Gwaii Haanas
 - Consensus decision-making and recommendations
- Management Council and Solutions Table:
CHN-BC Protected Areas
 - Joint and shared decision-making featuring delegated authority and enhanced consultation

Collaborative Planning

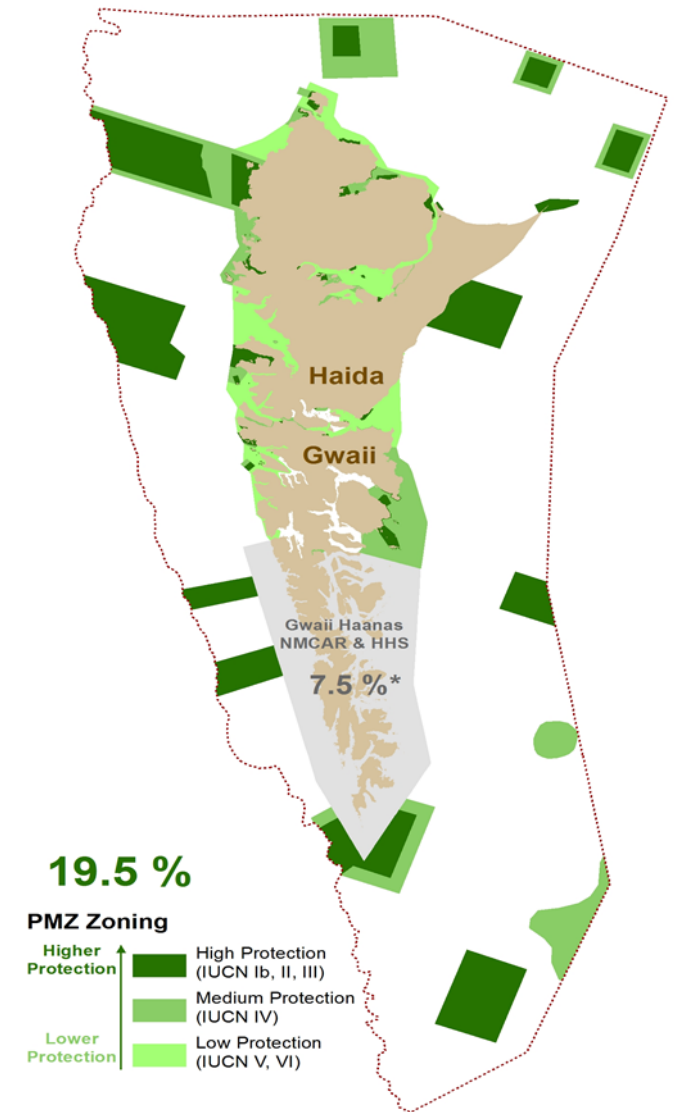
- Led by Government to Government Processes (Haida-Canada)
- Engaging the public through Advisory Committees , public meetings, stakeholder meetings, websites, etc.





Lessons Learned

- Integration - Mostly through First Nation efforts
- Effective – Management plans, protected areas and management actions but gaps
- Equitable – Success with common priorities but agreed to set aside differences such as Aboriginal Title
- Efficient – Responsive to Crown duties and responsibilities for consultation



Protection Management Zones (PMZ):

Areas managed to conserve natural values. There are three levels of conservation focus for these zones: High (strong emphasis on natural values), Medium (focus primarily on specific species and ecosystems), and Low (mix of conservation and sustainable human uses).



Key recommendations

- Equitable and effective governance requires agreed governance structures between traditional owners and colonial governments
- Management plans benefit from targeted engagement of public and stakeholder groups