



IUCN  
WORLD PARKS  
CONGRESS  
SYDNEY 2014

*Parks, people, planet:  
inspiring solutions*

# **PAs & ICCAs: Untangling Complexity**

**Giovanni Reyes**

Co-Convenor

**Philippine ICCA Consortium**

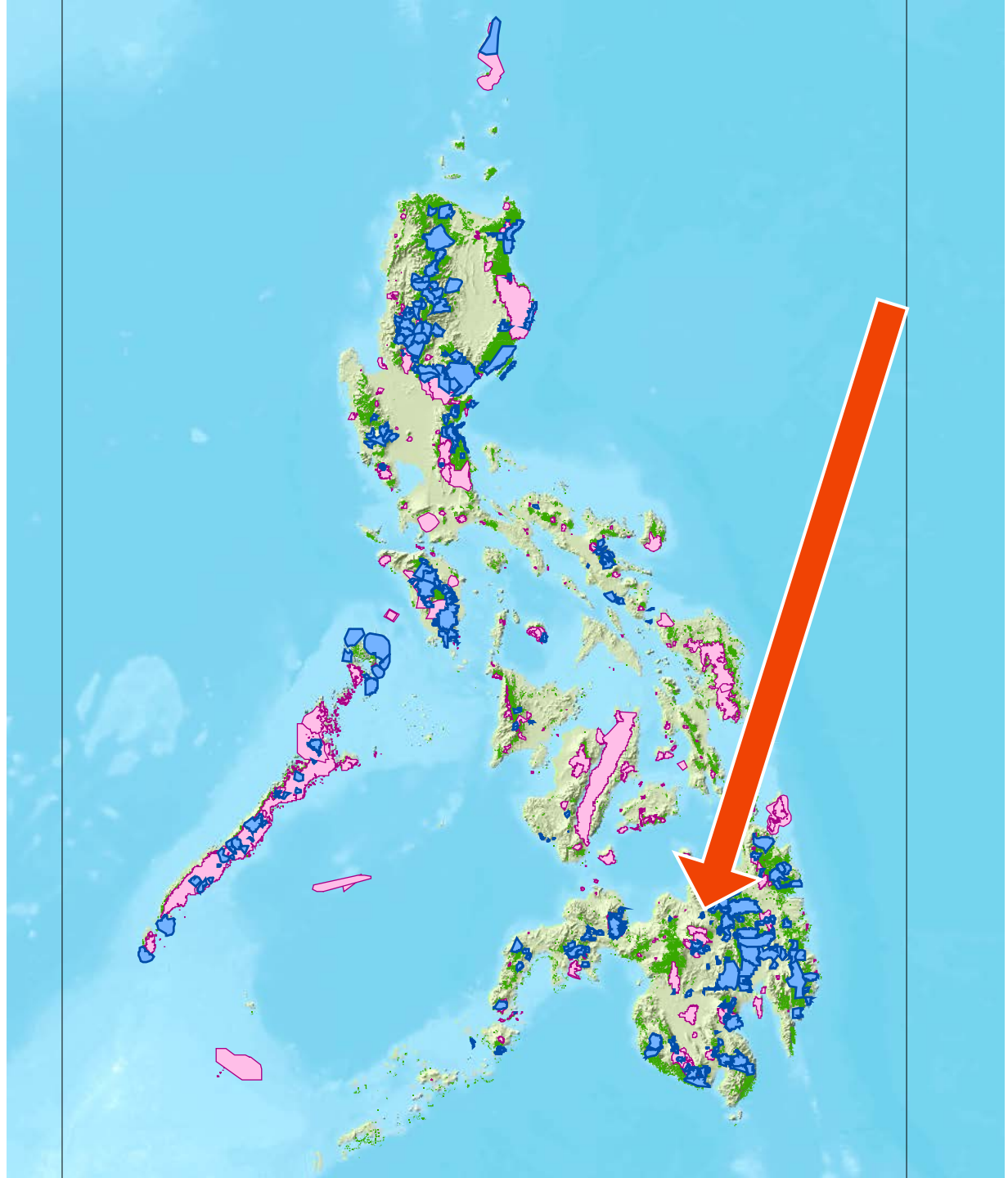
Glaiza Tabanao

**PAFID, IUCN-WCPA YP**



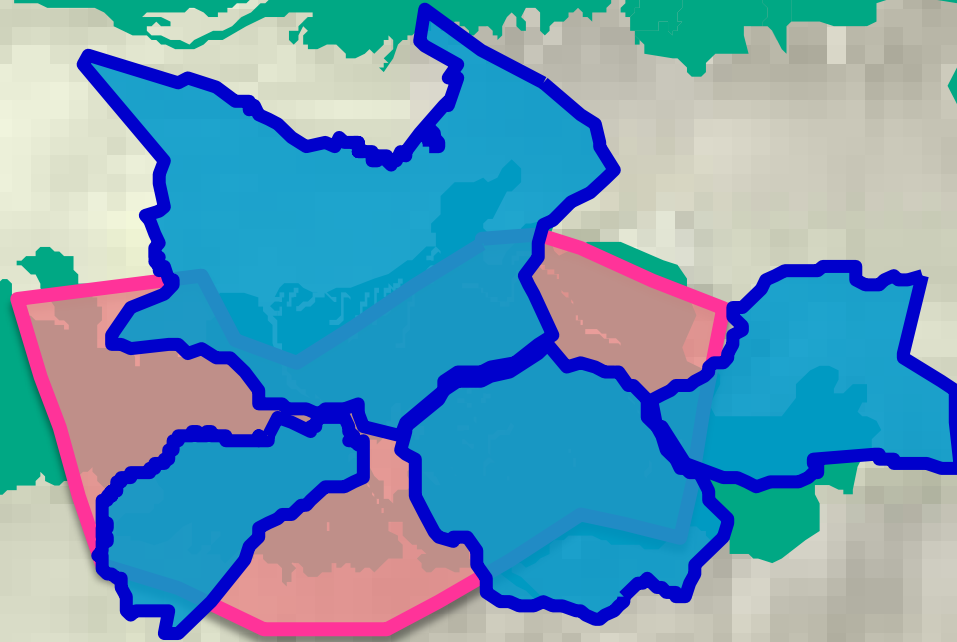


Natural Parks:  
“Large Area NOT  
materially altered by  
human activity”  
overlaps with AD’s  
governed by history  
of indigenous  
peoples activity



Mt. Kalatungan Range  
Natural Park

Ancestral Domains



# Motivations for Conservation

## PROTECTED AREA MANAGEMENT BOARD

- ❁ Declared in May 2000
- ❁ Area: 21,248 hectares
- ❁ Habitat of rare and endangered species floral and faunal species including the Philippine eagle
- ❁ Watershed
- ❁ Scenic lands
- ❁ Significant for scientific, educational and recreational use

## INDIGENOUS COMMUNITIES AND CUSTOMARY STRUCTURES

- ❁ Declared since time immemorial
- ❁ Area differs per territory
- ❁ Home to 3 tribes in at least 12 Indigenous Communities
- ❁ Source of food, water, housing materials and other domestic needs
- ❁ Source of traditional medicines
- ❁ Abode of spirits
- ❁ Origin of the Tribes
- ❁ Source of knowledge

**CONSERVATION**

# What did we do?

- ✓ Consultative
- ✓ Participatory
- ✓ Collaborative



Community Dialogues and Coordination Meetings

Participatory Research, Mapping and Resource Inventory

Community Plan Formulation and Harmonization

ICCA Registration

# What were the results?

- ♣ Traditional governance systems were respected by the park's management board.
- ♣ Protected Area Management Board integrated Community Development and Conservation Plans into the park's Management Plan.
- ♣ PAMB now provides financial and technical support for community projects relating to livelihood, conservation and cultural strengthening.
- ♣ Recognition of ICCAs and local government-managed conservation areas is a key strategy now embedded in the upcoming national PA system master plan.

*What was once opposing forces between IP communities and the formal park is now harmonized.*



# Recommendations

- ♣ Encourage confidence-building among stakeholders towards the realization of a shared vision on conservation.
- ♣ Support community-identified livelihood, food security and cultural strengthening initiatives.
- ♣ Ensure consultative and participatory processes in conservation and community development.

# Recommendations

- ♣ Adopt the ICCA Model as a mechanism that addresses nature conservation and indigenous peoples/human rights.
  - *Support for the Philippine ICCA Consortium*
  - *Support for the Global ICCA Consortium*





## Sources:

World Database on Protected Areas

National Commission on Indigenous Peoples

DENR-BMB

PAFID

ANTHROWATCH

HARIBON

Conservation International

World Conservation Monitoring Centre (WMC)

IUCN

LANDSAT

ESRI

Japan Aerospace Exploration Agency (JAXA)

CGIAR

Scripps Institute for Oceanography