



IUCN
WORLD PARKS
CONGRESS
SYDNEY 2014

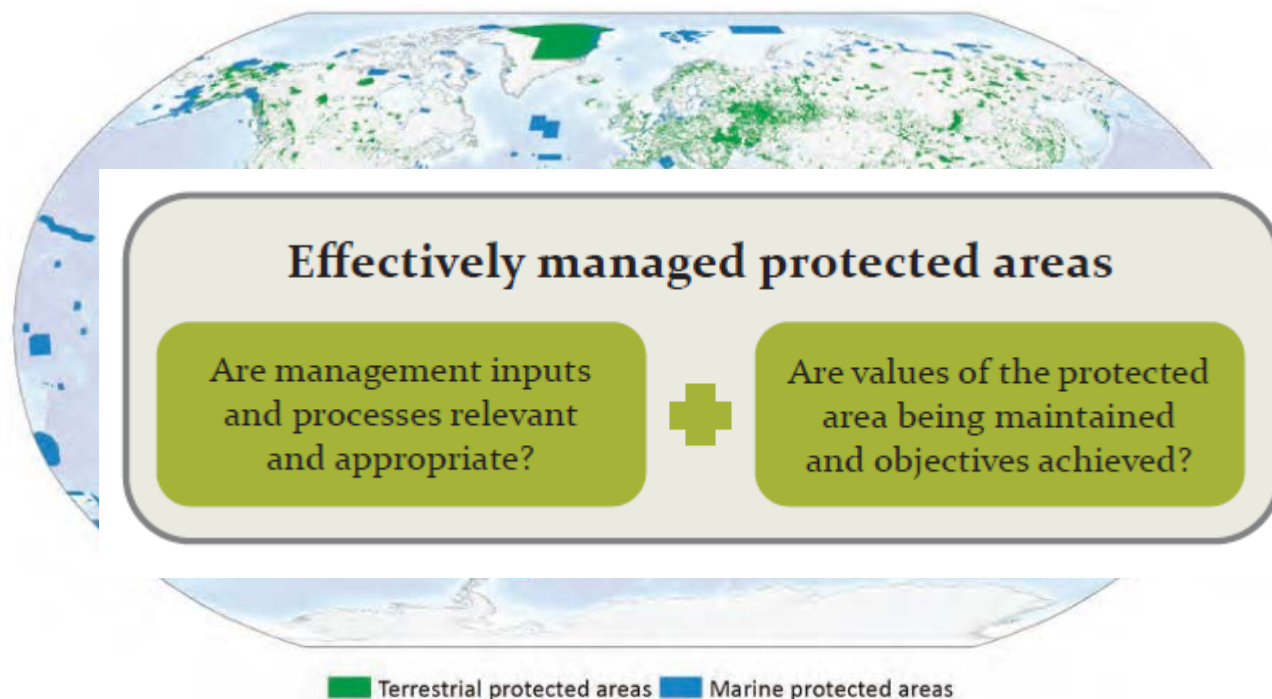
Synergies between Protected Area Management Effectiveness and Social and Governance Assessment

Neil Burgess, Fiona Danks, Dilys Roe, Phil
Franks

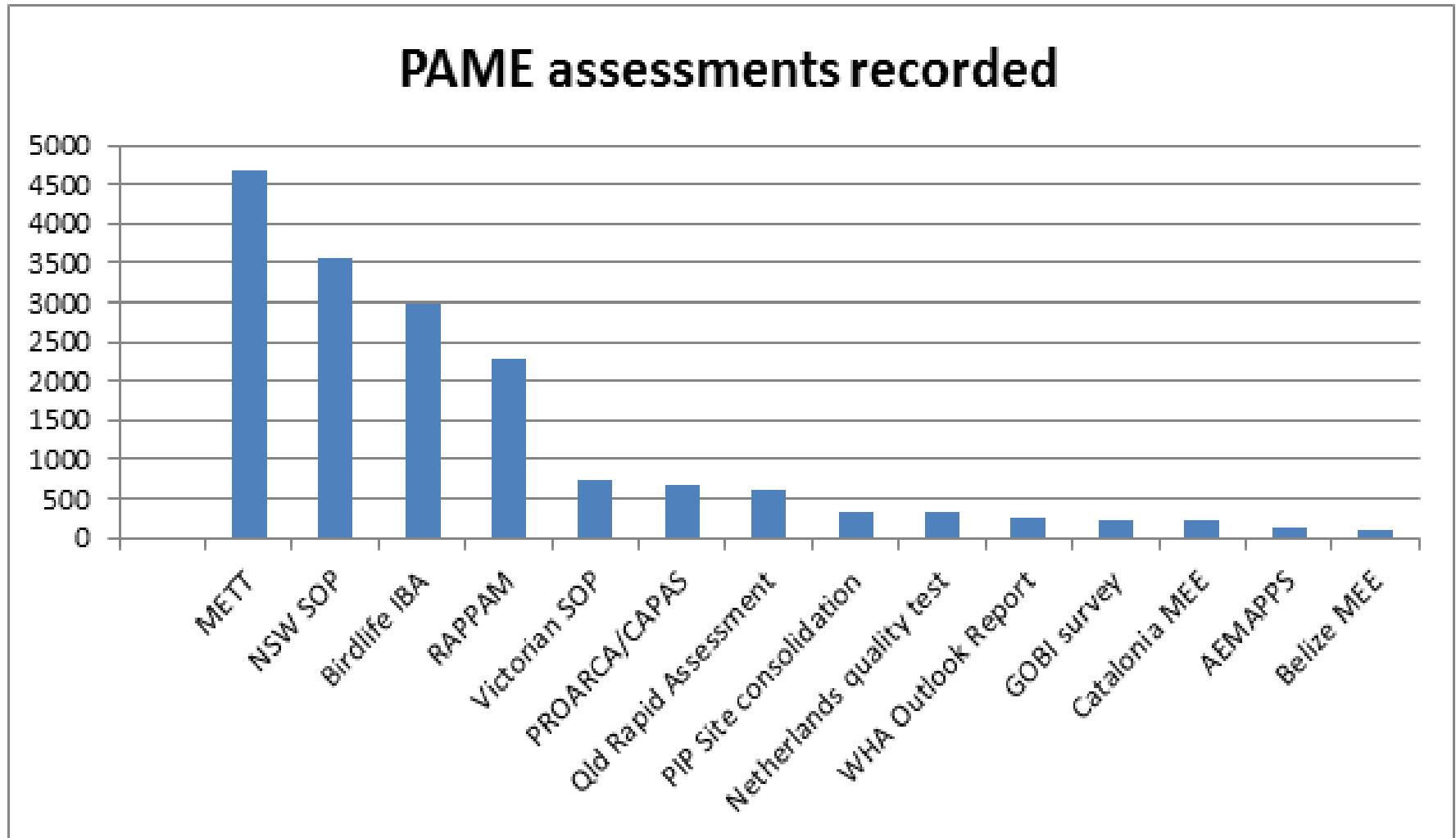


Management Effectiveness in Brief

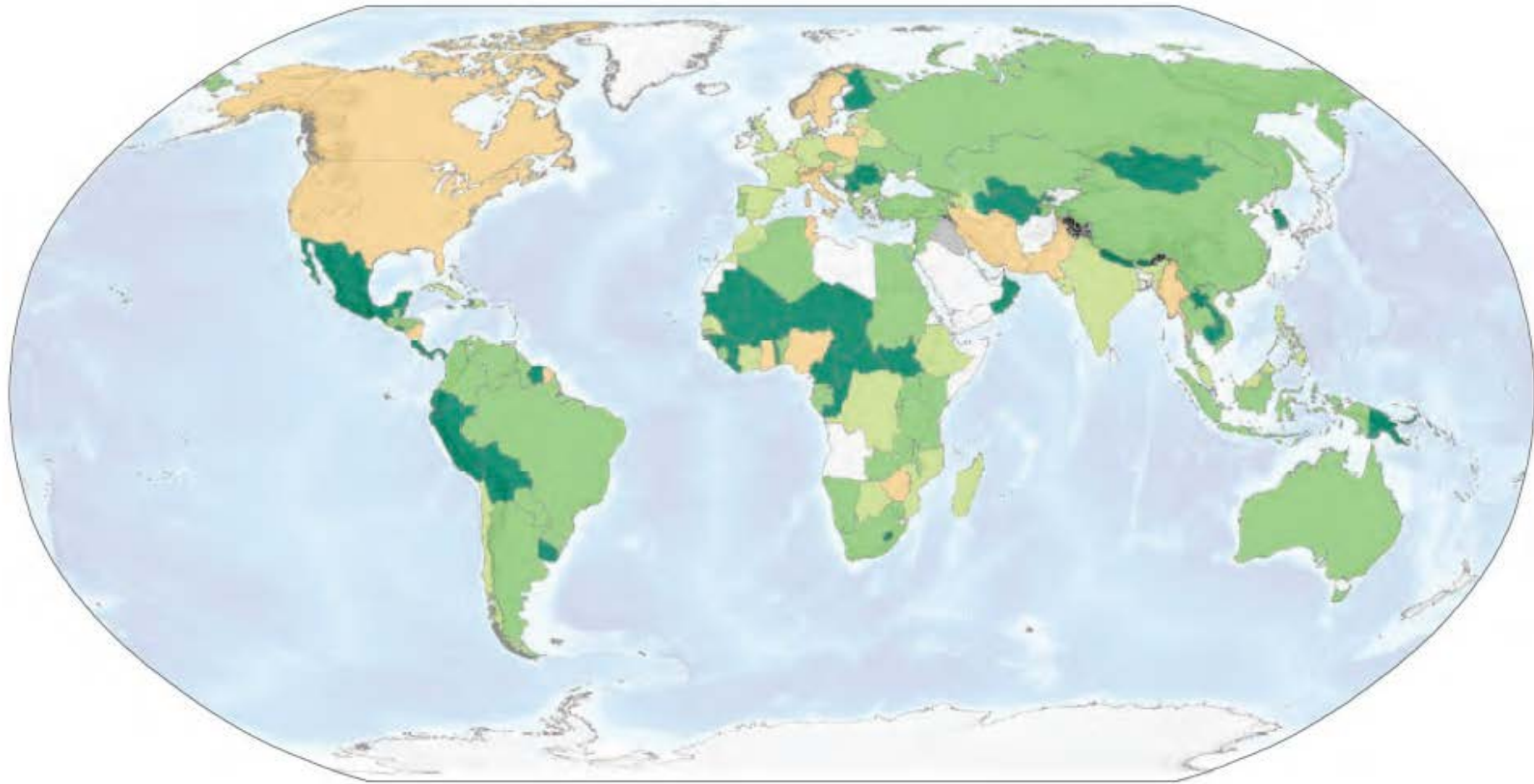
- Measuring area not enough
- Aichi 11 ‘effectively and **equitably** managed’
- PA estate of at least 209,000 sites.....



Application of PA Effectiveness Tools



Spatial distribution of PAME assessments

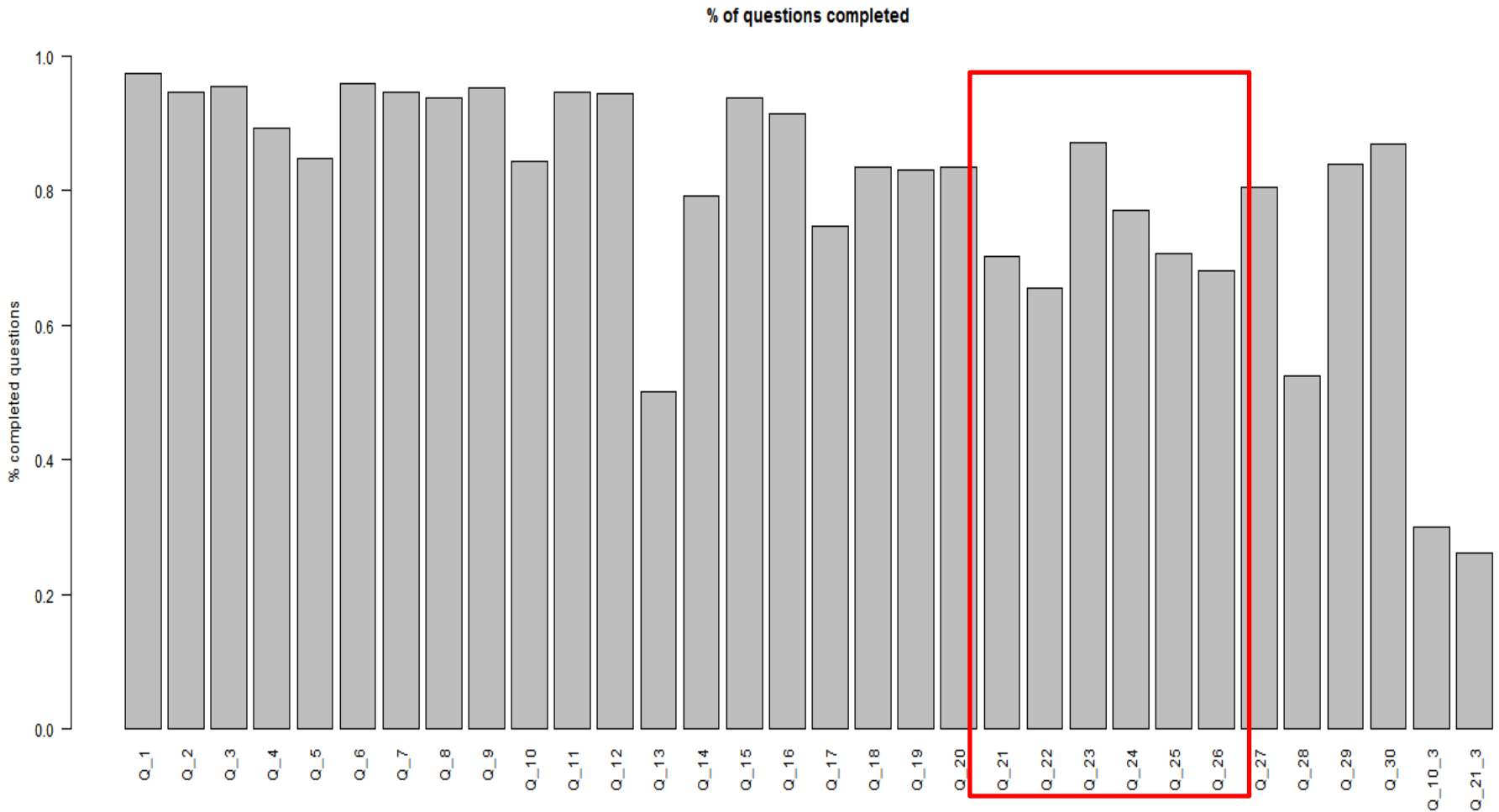


Legend: No Assessments < 10 % 10 % - 30 % 30 % - 60 % > 60 %

BUT - do PAME effectiveness tools cover social and governance issues?

- How to assess?
- How to improve?
- Relationship with full impact evaluation?
- Way forward.....

Social questions in the METT



Emphasis of the PAME, SAPA, Governance Assessment tools / approaches

	PAME				SAPA	Governance	Impact Evaluation
	METT	RAPPAM	IBA	EOH		IUCN Guide	
Elements of the PA management cycle							
<i>Design and Planning</i>							
Context		Major coverage	Moderate coverage	Major coverage		Minor coverage	Minor coverage
Planning		Major coverage	Moderate coverage	Major coverage		Minor coverage	Minor coverage
<i>Adequacy/Appropriateness</i>							
Inputs	Major coverage	Major coverage	Major coverage	Major coverage		Minor coverage	Minor coverage
Process	Major coverage	Major coverage	Major coverage	Major coverage		Major coverage	Minor coverage
<i>Delivery</i>							
Outputs	Moderate coverage	Moderate coverage	Major coverage	Major coverage		Major coverage	Minor coverage
Outcomes	Minor coverage	Minor coverage	Moderate coverage	Major coverage	Moderate coverage	Major coverage	Major coverage
Impact					Moderate coverage		Major coverage

Elements of the PA management cycle

Design and Planning

Context

Planning

Adequacy/Appropriateness

Inputs

Process

Delivery

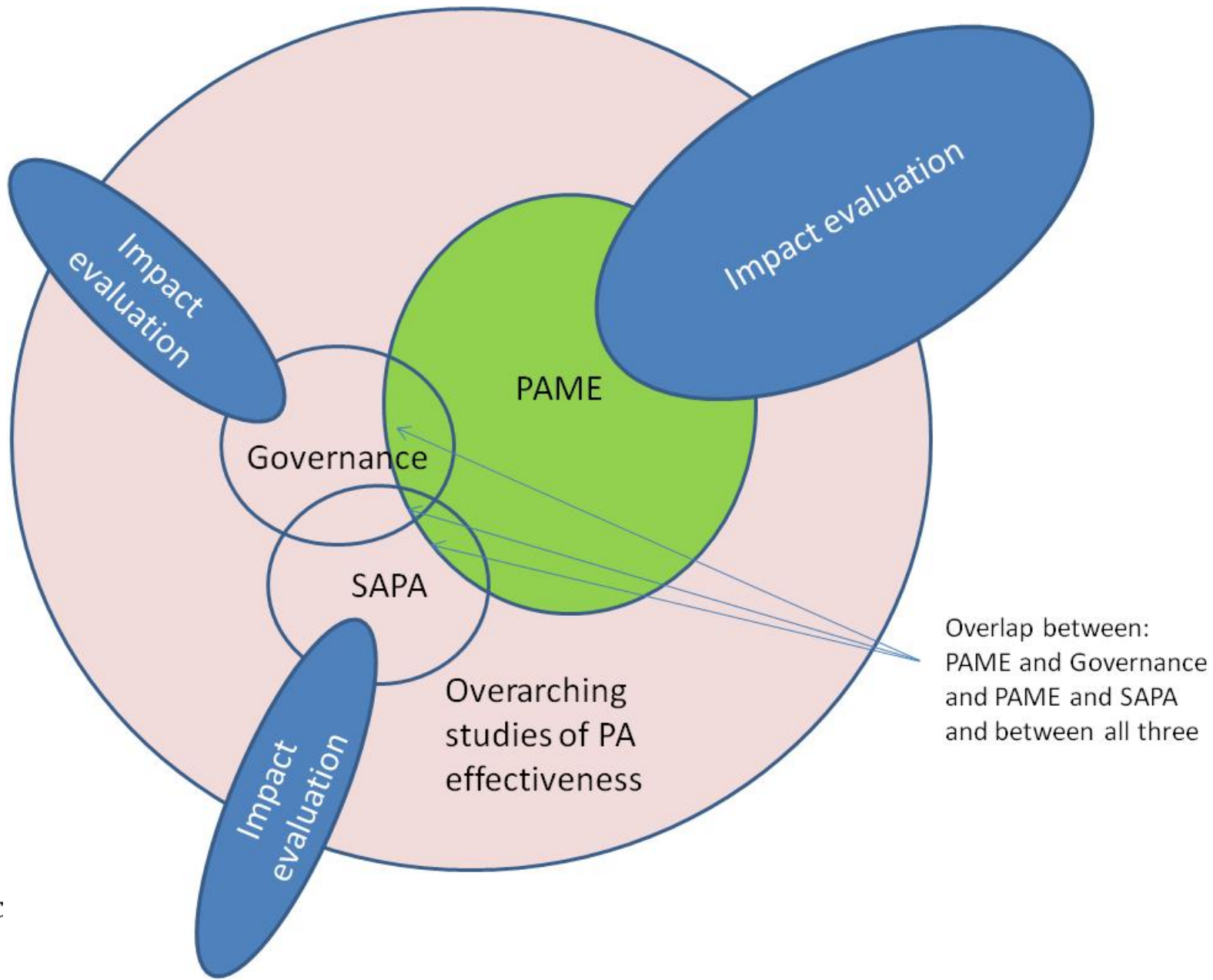
Outputs

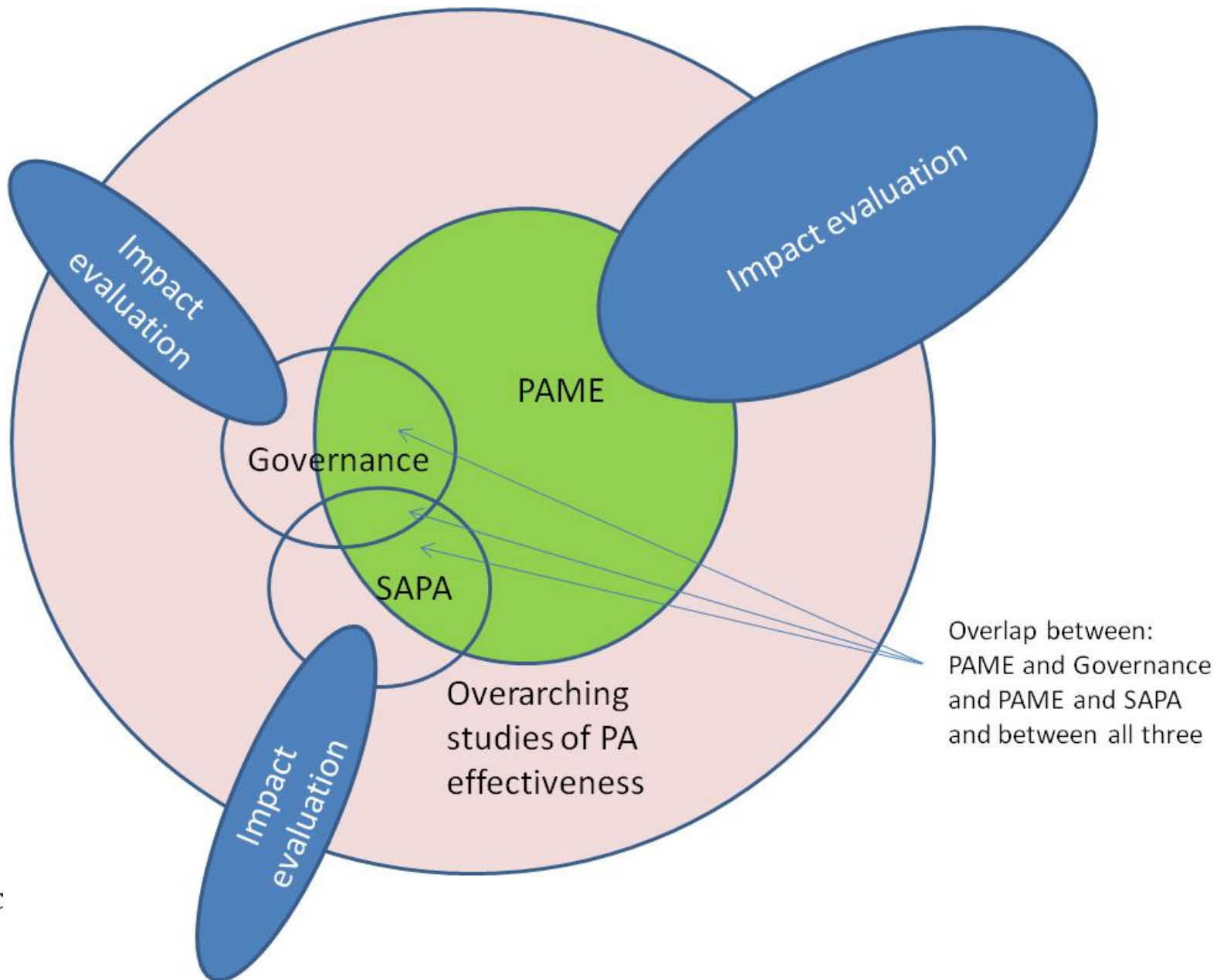
Outcomes

Impact



	No coverage
	Minor coverage
	Moderate coverage
	Major coverage





Next Steps and Options: Towards Tracking ‘Equitably Managed Protected Areas’

Option 1: Expand the METT:

- simplest
- most regularly applied tool
- augment the METT with further social questions
- social questions should be core questions
- not “bonus” questions attached to existing core questions.

Option 2: Improve the process:

- Most PAME tools rely on self-assessment by protected area managers.
- Ensure all stakeholders have input to the process
- Ensure all relevant fields including evidence/justification for scoring completed
- **If not** data will be not useful and potentially misleading.
- all results audited to ensure data quality
- allows data to be used for different purposes.

Option 3: Expand the range of tools commonly applied

Further use could be made of other existing tools that contain a larger assemblage of governance and social questions:

- Perhaps the most comprehensive of these is the *Enhancing our Heritage* tool for the World Heritage Convention
- And the associated Periodic Reporting database for the same convention.



Option 4: Specialist tools for specialist purposes

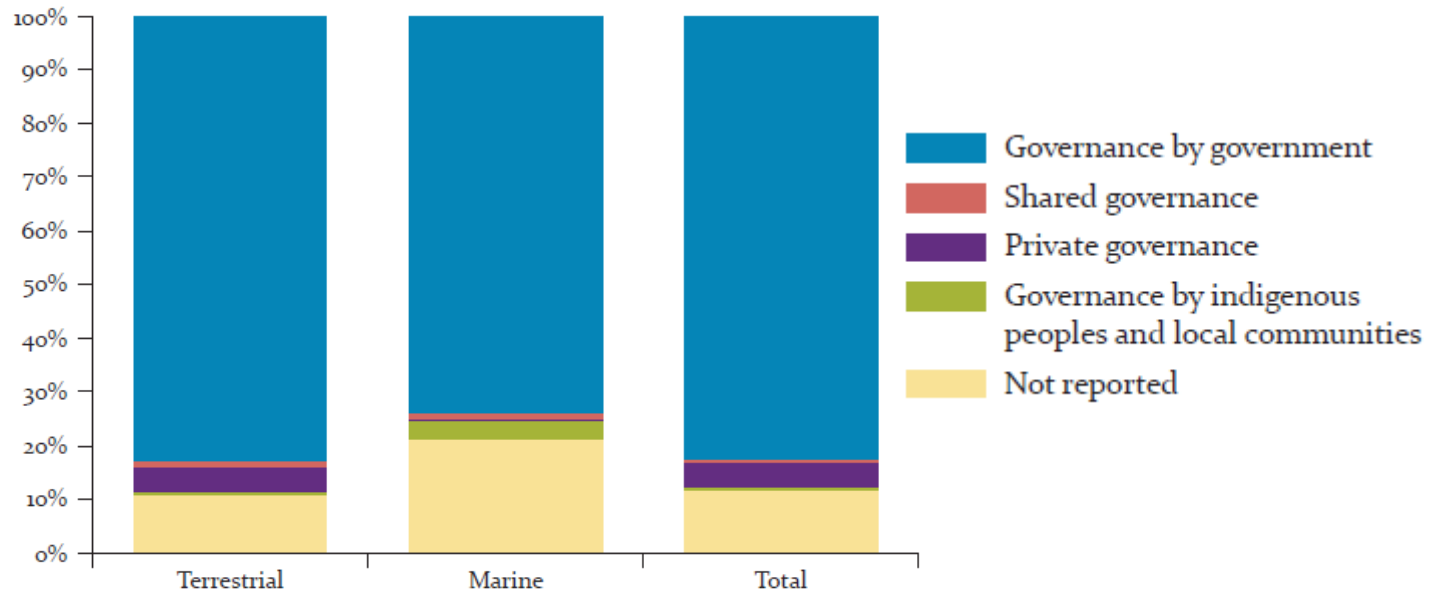
- Questions on governance and social impacts in the METT and other PAME tools weak/misleading
- Potentially - remove the governance and social questions altogether.
- Would allow management effectiveness tools to focus on protected area management quality - and potentially the biodiversity outcomes
- -Would require other more specialised tools for social and governance assessments.

Option 5: A modular framework:

- Broad framework for PA management could cover
 - biodiversity outcomes
 - financial sustainability
 - management quality
 - social and governance issues.
- Each could be developed into a module which collectively address the full suite of issues that are encountered in protected area management.
- WDPA is being linked to PAME database module, so further modules could be developed that capture social data, governance data etc.

Tracking equitable management

- Protected Planet report uses IUCN governance framework
 - See below
- Currently not possible any other way...



Towards a database fit for tracking equitable governance

