



IUCN
WORLD PARKS CONGRESS
SYDNEY 2014

Stream Session #7:
Respecting Indigenous & Traditional Knowledge and Culture
Olympic Park, November 15



Policy Dialogue on:
The role of traditional management systems in achieving national and international policy goals and targets



IUCN
WORLD PARKS CONGRESS
SYDNEY 2014

Challenges of Co-management of Protected Areas Overlap with Indigenous Lands in Brazil

Iara Vasco Ferreira & Henyo Barreto
Federal University of Santa Catarina - Brazil



IUCN
WORLD PARKS CONGRESS
SYDNEY 2014

BRAZILIAN POLICIES OF PROTECTED AREAS AND INDIGENOUS LANDS

INTERNATIONAL

- Convention 169 ILO
- Convention of Biological Diversity - CBD
- WPC Durban
- Pow Protected Area - CBD
- UN Declaration on the rights of indigenous peoples
- Aichi Goals & Targets - CBD

NATIONAL

- Federal Constitution
- National System of Protected Area
- National Strategic Plan of Protected Area
- ICMBio
- Indigenous GEF Full Size Project
- National Policy of Territorial and Environmental Management of Indigenous Lands in Brazil - PNGATI
- CONABIO decision



IUCN
WORLD PARKS CONGRESS
SYDNEY 2014

CURRENT CONTEXT

PROTECTED AREA

Federal, State and Municipal
Levels: 1930

- INTEGRAL PROTECTION: 581
- SUSTAINABLE USE: 569
- PRIVATE AREAS: 780
- Around 150.000.000 acres
under protection

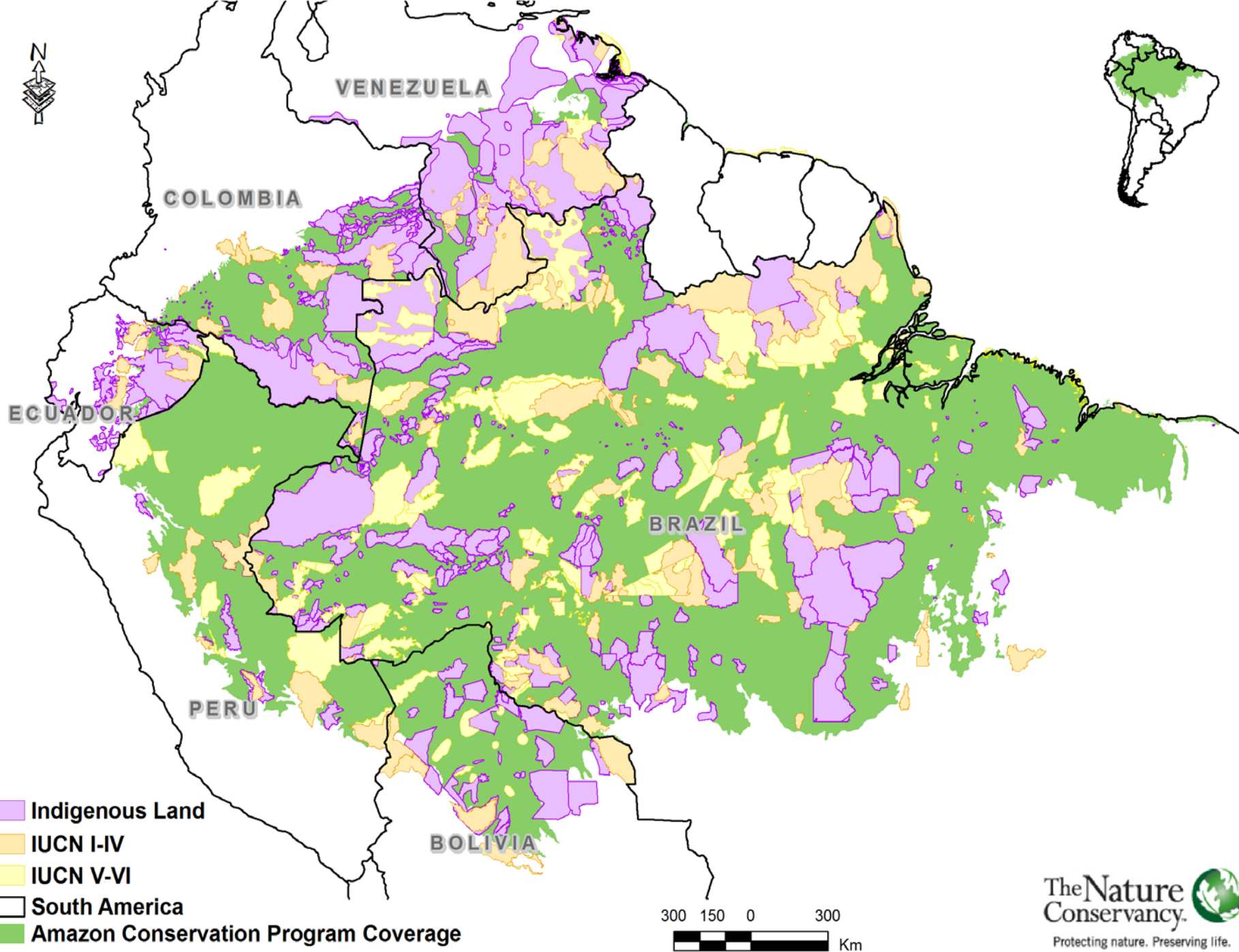
Fonte: CNUC/MMA - www.mma.gov.br/cadastro_uc

INDIGENOUS LANDS

- Population: 817.000 (2010)
- 305 indigenous groups
- 173 of them in the Amazon
- 48 isolated groups
- 274 languages
- Around 110.000.000 acres -
13% of Brazil's territory

Fonte: <http://www.funai.gov.br/>







IUCN
WORLD PARKS CONGRESS
SYDNEY 2014

CURRENT CONTEXT OF OVERLAPING AREAS

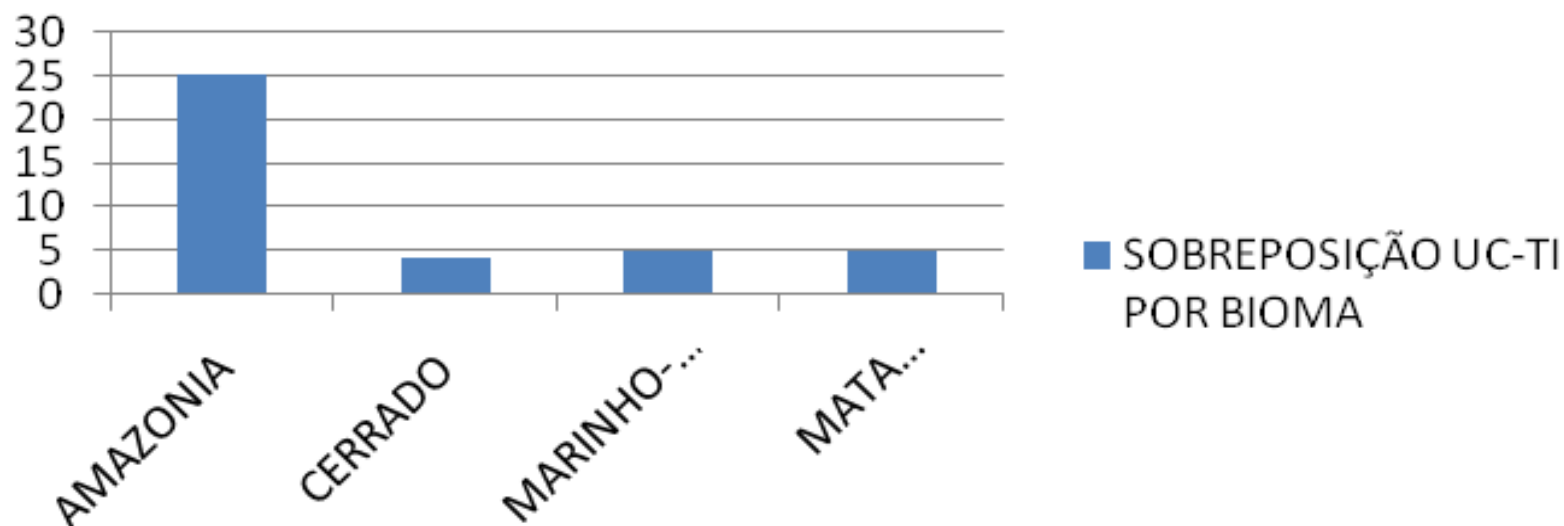
- Overlap of 39 protected areas (various management categories) with 55 indigenous lands, mainly in the Amazon;
- The territorial extent equals 6.657.371,49 acres;
- This surface represents a direct impact on the integrity of the indigenous territories involved in cases of overlap, which reach 60 million acres.





IUCN
WORLD PARKS CONGRESS
SYDNEY 2014

SOBREPOSIÇÃO UC-TI POR BIOMA



Fonte: Coordenação de Gestão de Conflitos Territoriais – CGCOT/ICMBio, 2012.



IUCN
WORLD PARKS CONGRESS
SYDNEY 2014

The Double Affection as a New Category

- Spatial planning applied to federal areas;
- Prerogative of the executive branch;
- Alternative to ease the conflict arising from the overlap of the Pas and IIs;
- Based on "compatibility of indigenous lands with the environment and areas of preservation and conservation".







IUCN
WORLD PARKS CONGRESS
SYDNEY 2014

GRATEFUL FOR YOUR ATTENTION!

Contact Speakers
iara.vasco@posgrad.ufsc.br
soniaguajajara@hotmail.com

