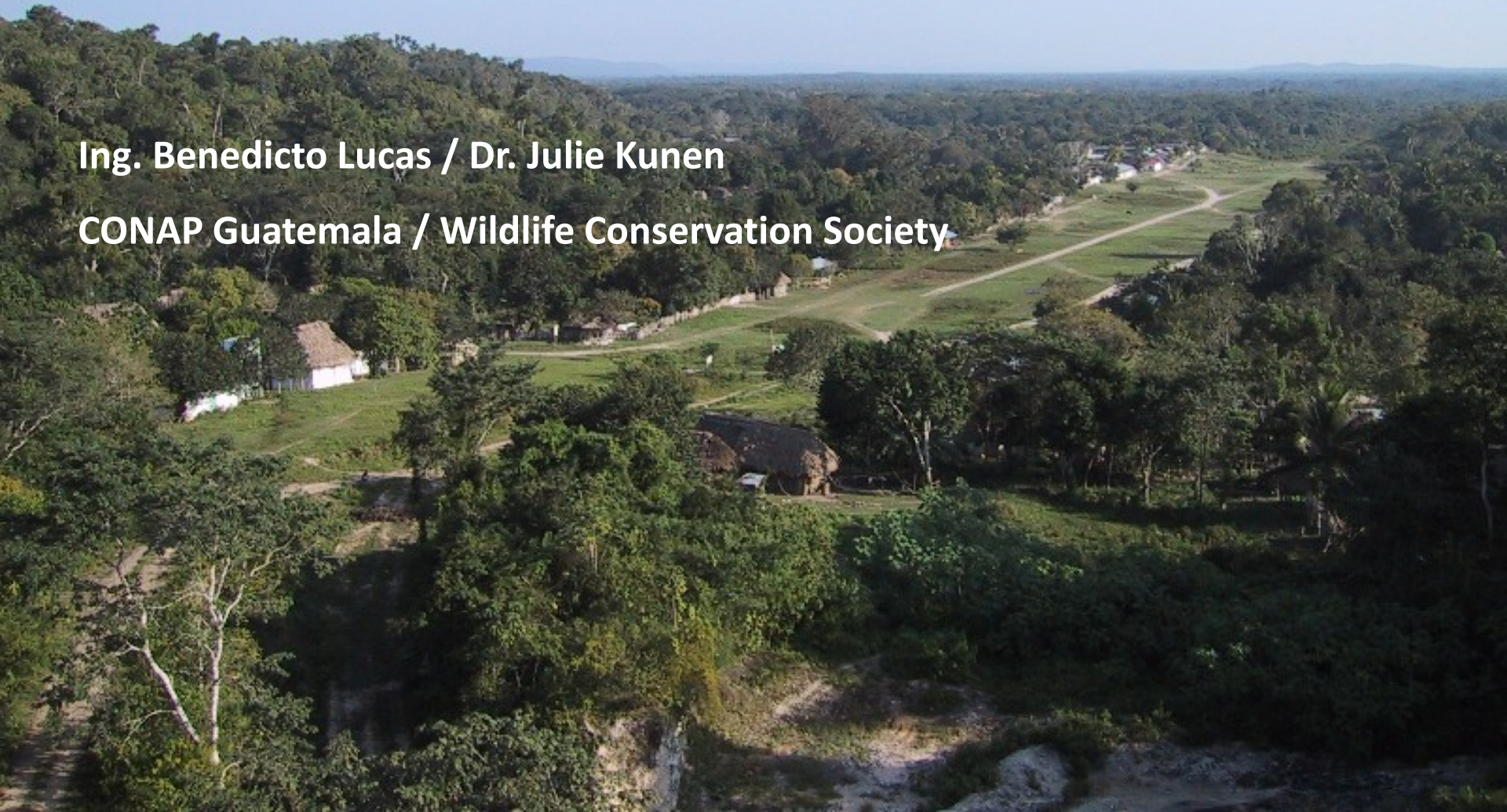


Traditional Fire Management and Climate Mitigation:

The Case of Guatemala's Maya Biosphere Reserve

Ing. Benedicto Lucas / Dr. Julie Kunen

CONAP Guatemala / Wildlife Conservation Society



Since 1895, WCS has helped create or expand
245 protected areas worldwide.

Today, WCS helps manage or support protected
areas in 60 countries.



We urge WPC participants to:

- Encourage countries to meet the Aichi targets for protected area creation & management
- Focus on large, intact systems with high biodiversity
- Engage civil society to assist



Maya Forest



Forest Fires



El Niño



Maya Biosphere Reserve

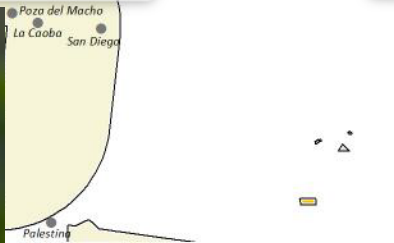


Paso Caballos:

2000 people, 99% Q'eqchi'
Maya, Laguna del Tigre NP

Uaxactun:

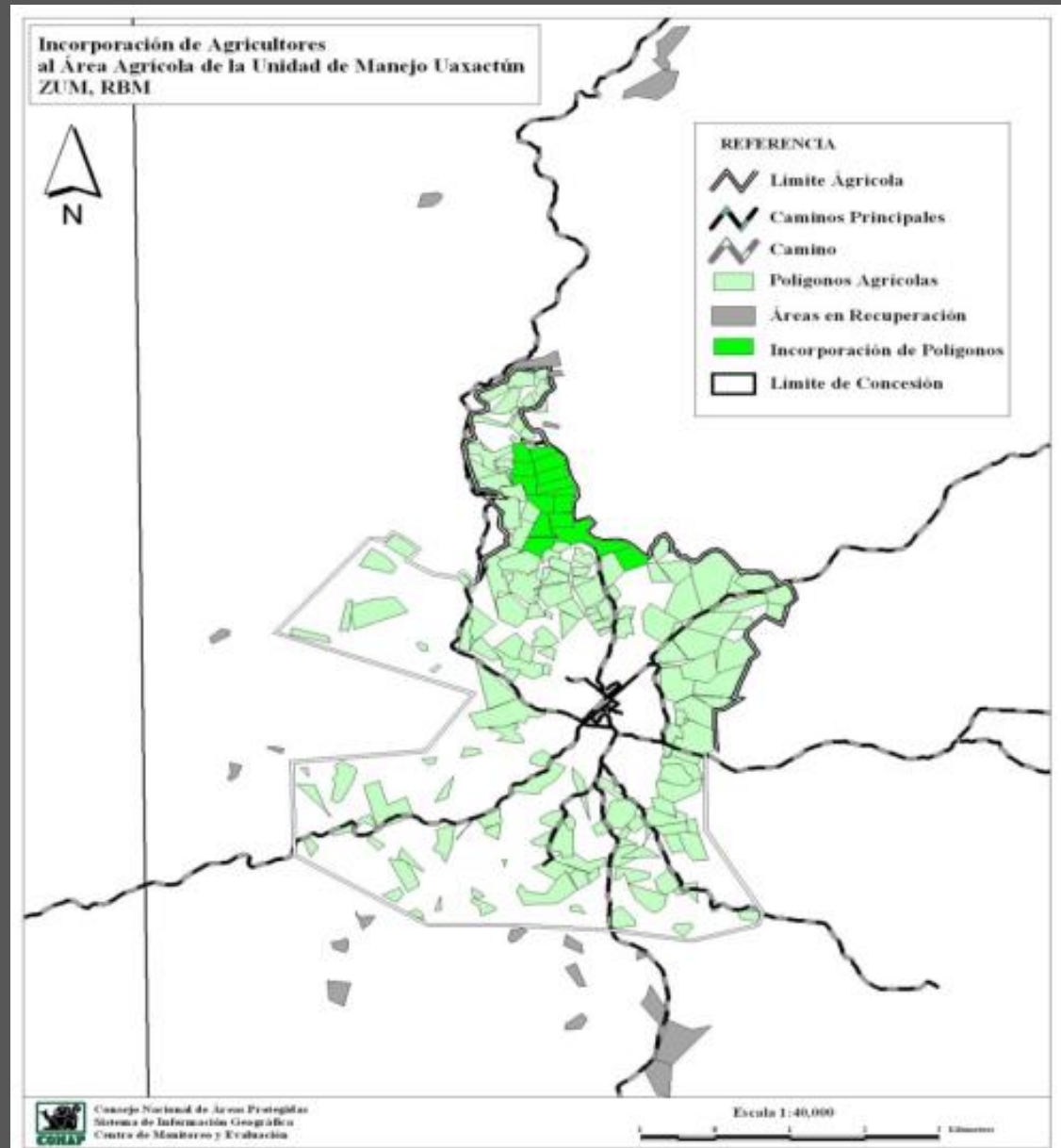
1200 people, 95% Ladino,
Community forest concession



Approach

Territorial Planning & Agriculture

- 21 “satellite” agricultural plots relocated (157 ha)
- All agriculture plots now in authorized polygon



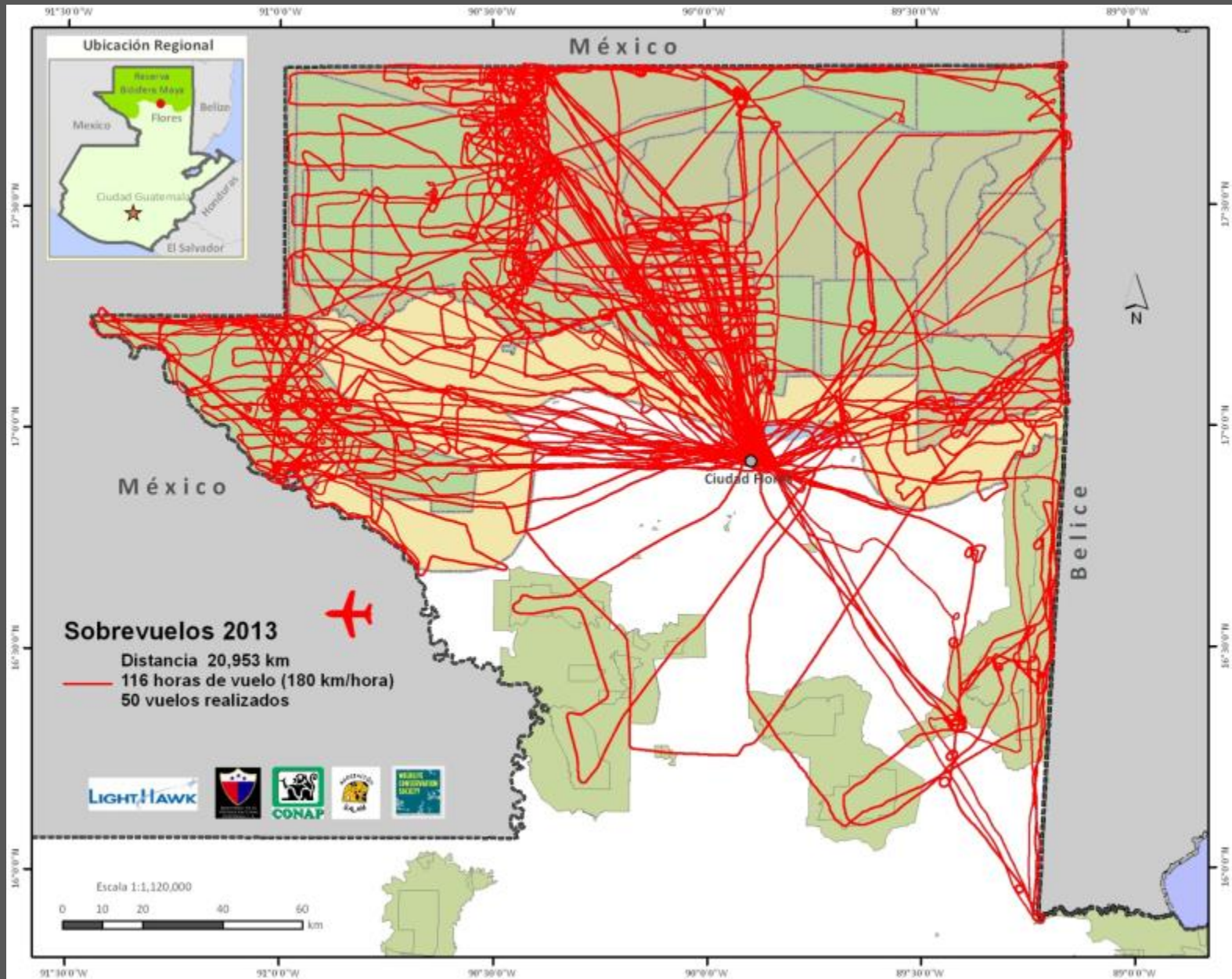
Implementation of Early Warning System for Fire in Local Communities



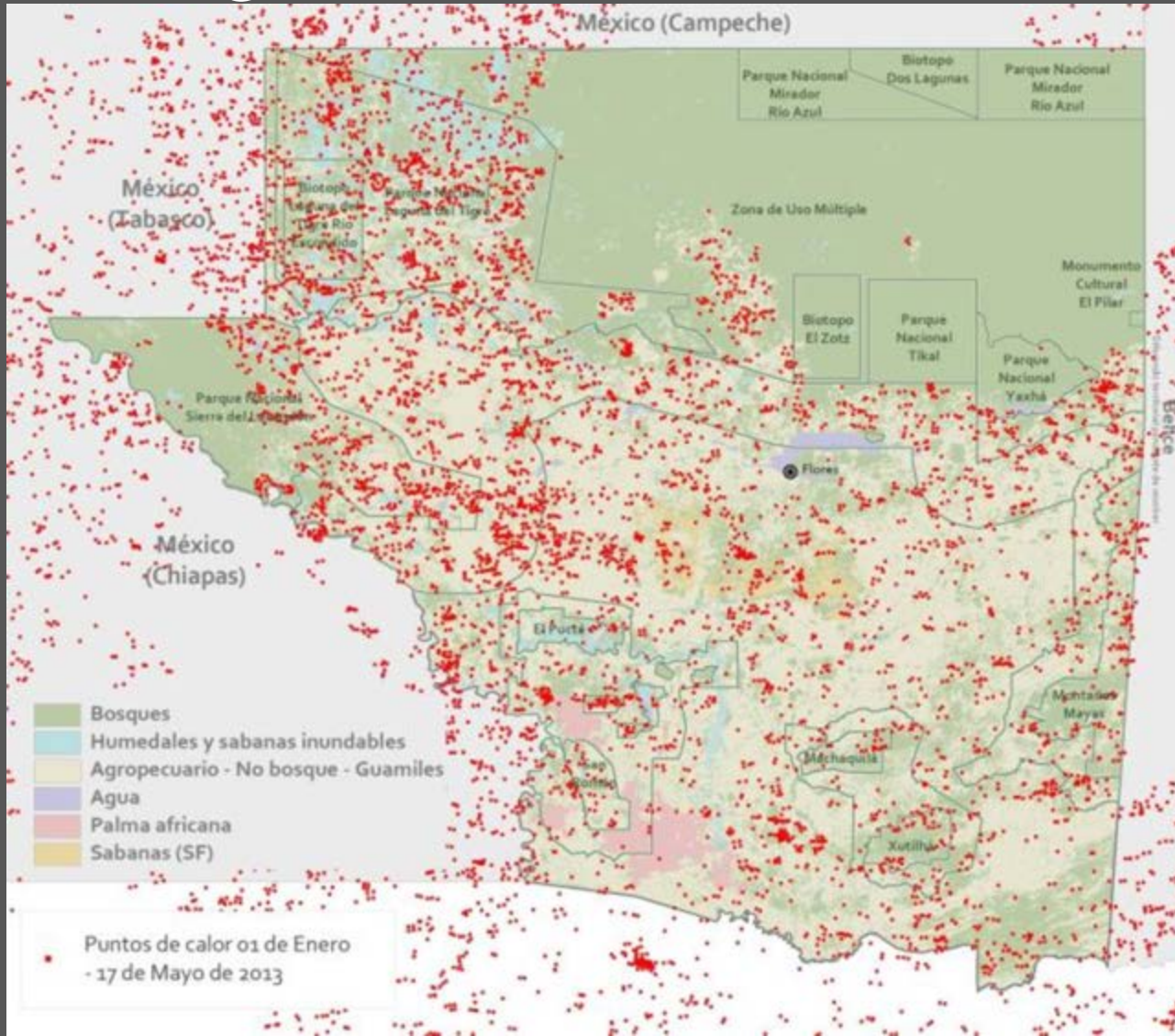
Territorial Control and Protection



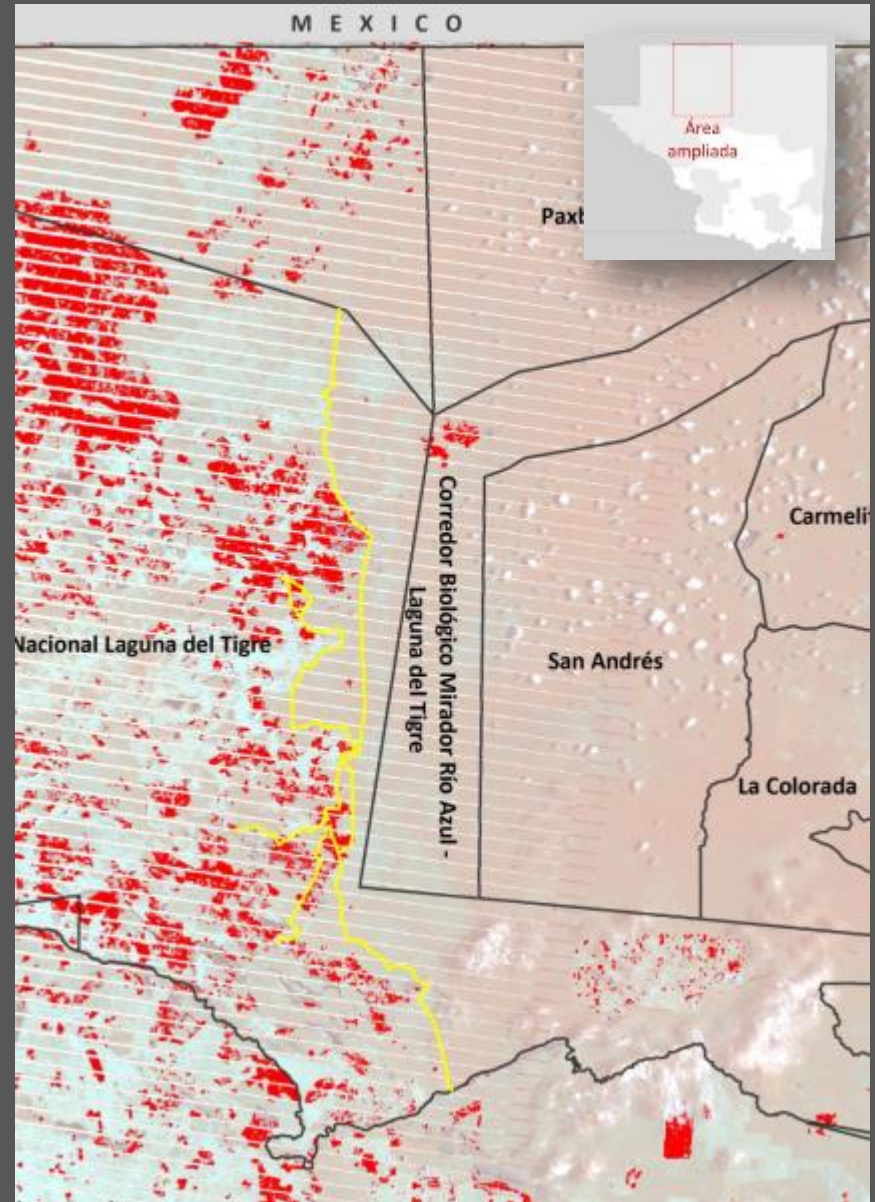
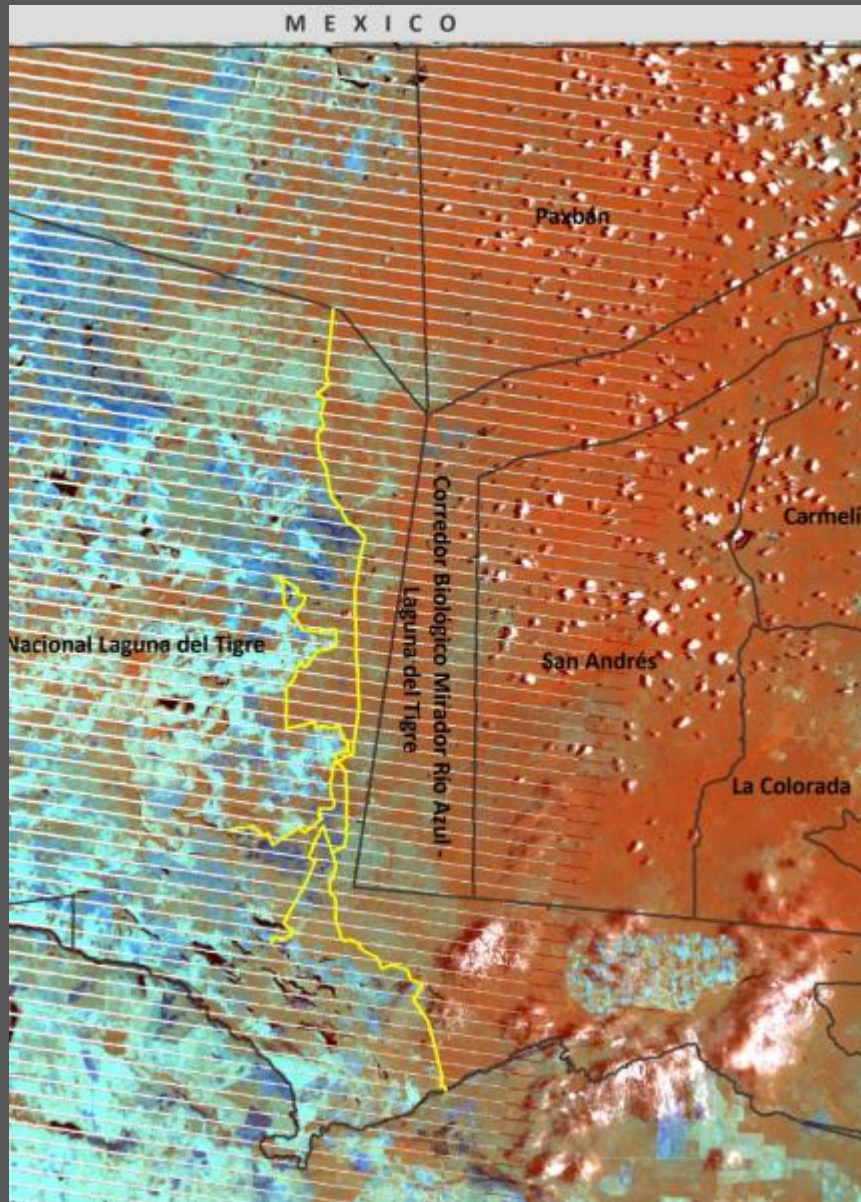
Territorial Control and Protection



Weather and Fire Monitoring during Fire Season (CEMEC)

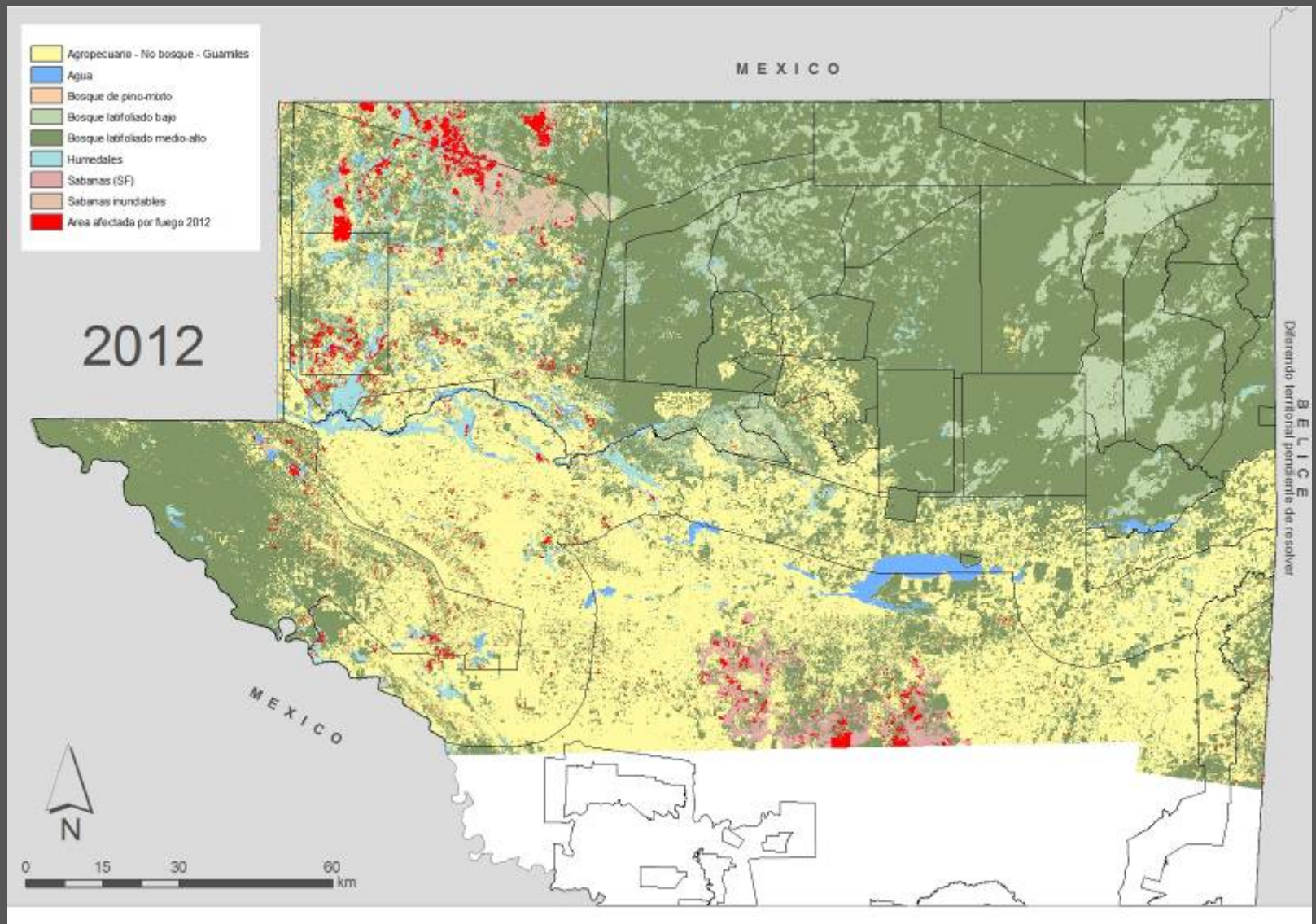


Evaluation of Fire Impact



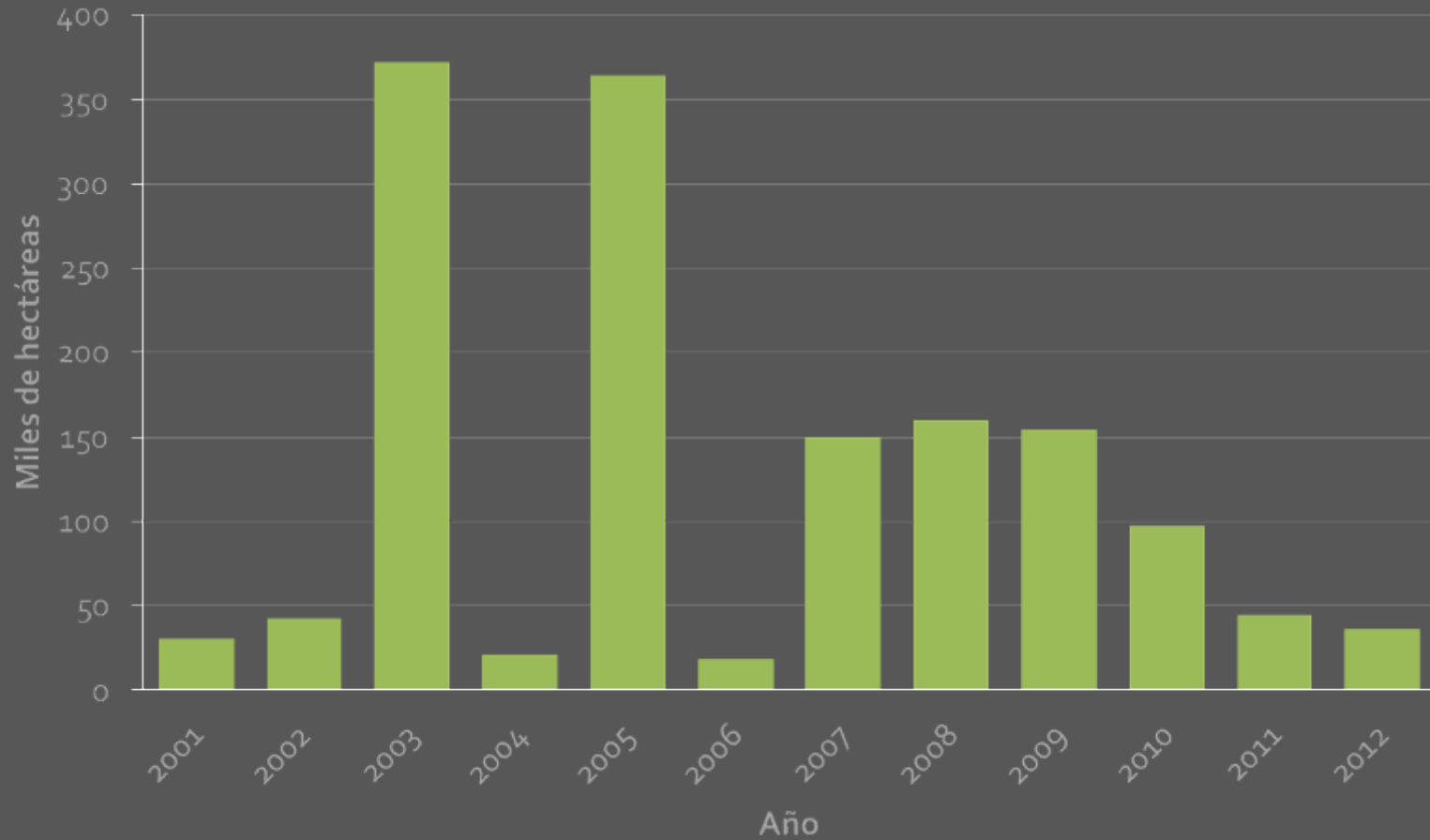
Contribution to Climate Mitigation and Adaptation

HECTARES AFFECTED BY FIRE



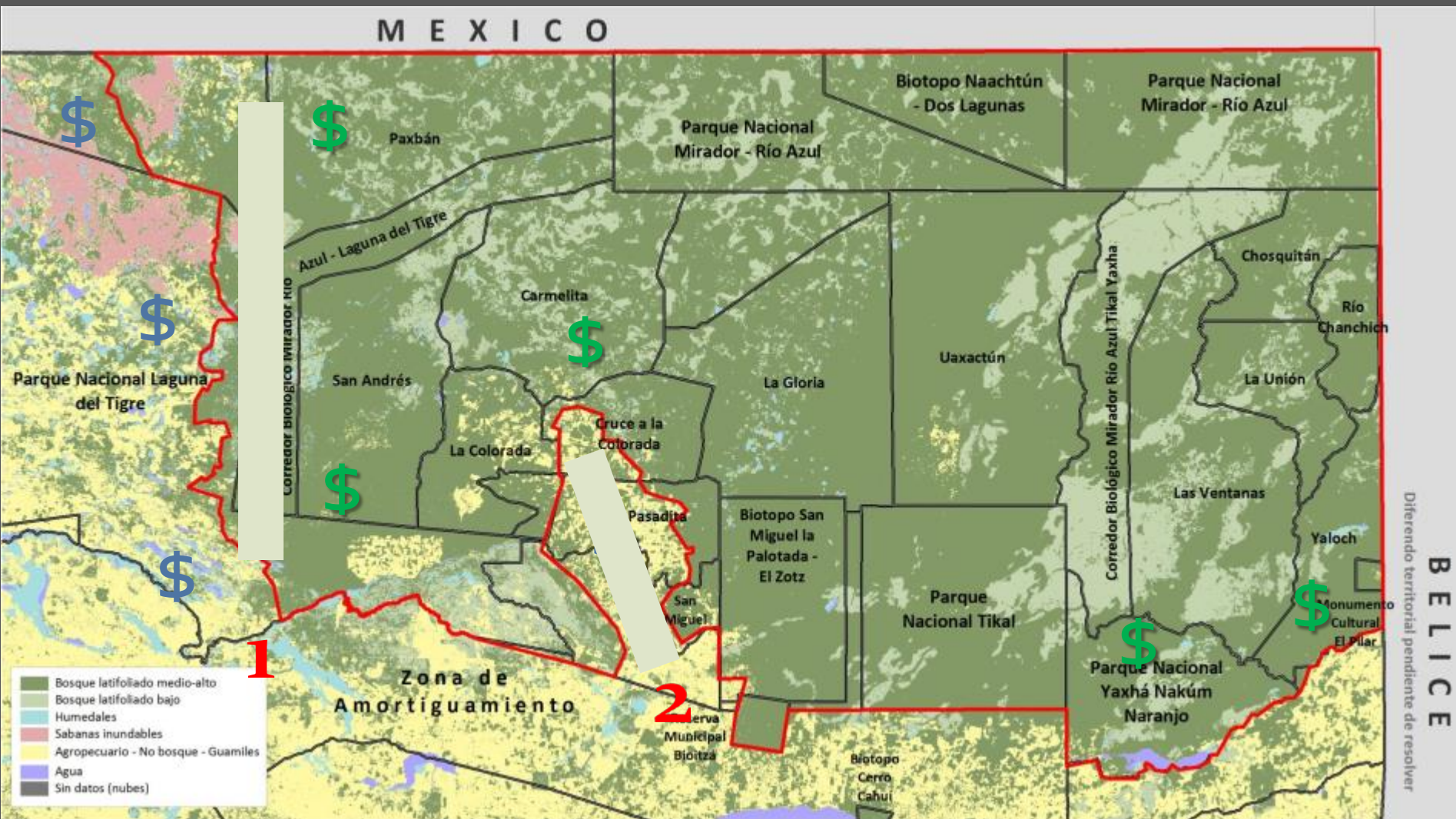
Cicatrices de Fuego 1998 - 2012

HECTARES AFFECTED BY FIRE



Superficies afectadas por el fuego 2001-2012

"The Shield"



Lessons Learned

1. *Fire prevention is far superior to fire suppression.*
2. *Key to engage local communities to ensure traditional agricultural activities while reducing fire risk*
3. *CONAP's supervisory role has been paramount*
4. *Over flights identify high threat areas prior to the burning season, allowing targeted mitigation activities*

Thank you



For more information, please visit:

@THEWCS

WPC.WCS.org

WCSlatinamerica@wcs.org

