



IUCN  
WORLD PARKS  
CONGRESS  
SYDNEY 2014

# Inspiration for Partnership with Inuit communities

## Northern Parks in Québec

**Markusi Qisiiq - KRG**  
**Catherine Pinard - KRG**  
**Jacques Perron - CCEA**



# Who is the CCEA?

**A non-governmental, charitable organization (est. 1982)**

- Does not represent the views or position of any one jurisdiction

**Mission:** *“to facilitate and assist Canadians with the establishment and management of a comprehensive network of protected areas representative of Canada's terrestrial and aquatic ecological natural diversity”*

**Composed primarily of protected areas practitioners from protected areas agencies in federal, provincial, and territorial governments and in national NGOs**

**Conservation Areas Reporting and Tracking System (CARTS)**

- Publication of canadian statistics for Aichi Target 11

**CCEA taking a science-based approach**

**IUCN Member as National non-governmental organization**

# Nunavik



# Kativik Regional Government

- Administration, finance, human resources
- Legal
- Municipal and public works
- Regional development
- Sustainable employment
- Public security
- Transport
- Recreation
- *Renewable resources, environment, lands and parks*



# Sanarrutik Agreement-2002

- Partnership agreement on economic and community development in Nunavik



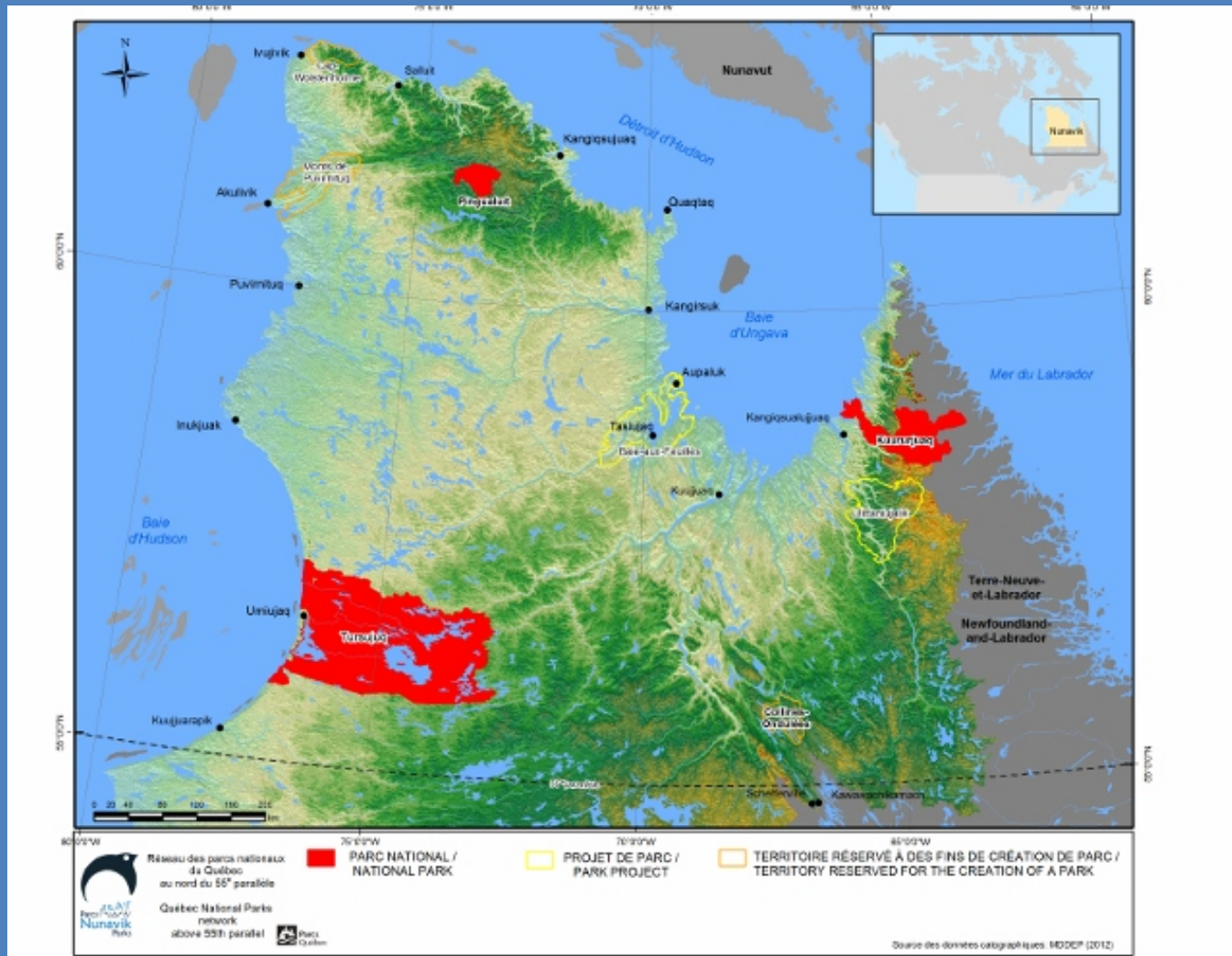
- Parks: tourism development opportunity

# Sivunirmut Agreement-2004

- Agreement concerning the development of parks in Nunavik
  - Planning and development
  - Operations
- Integrated in block funding agreement



# Nunavik Parks today



A wide-angle photograph of a high-altitude mountain landscape. The foreground is a rocky, light-brown slope. In the middle ground, two hikers with large backpacks are standing on a patch of snow. The background features dark, rugged mountains under a blue sky with scattered clouds. The text "15 steps towards park creation" and "La création d'un parc en 15 étapes" is overlaid on the image.

15 steps towards park creation  
*La création d'un parc en 15 étapes*



# 1. Presentation of the project to communities

*Présentation du projet aux communautés*



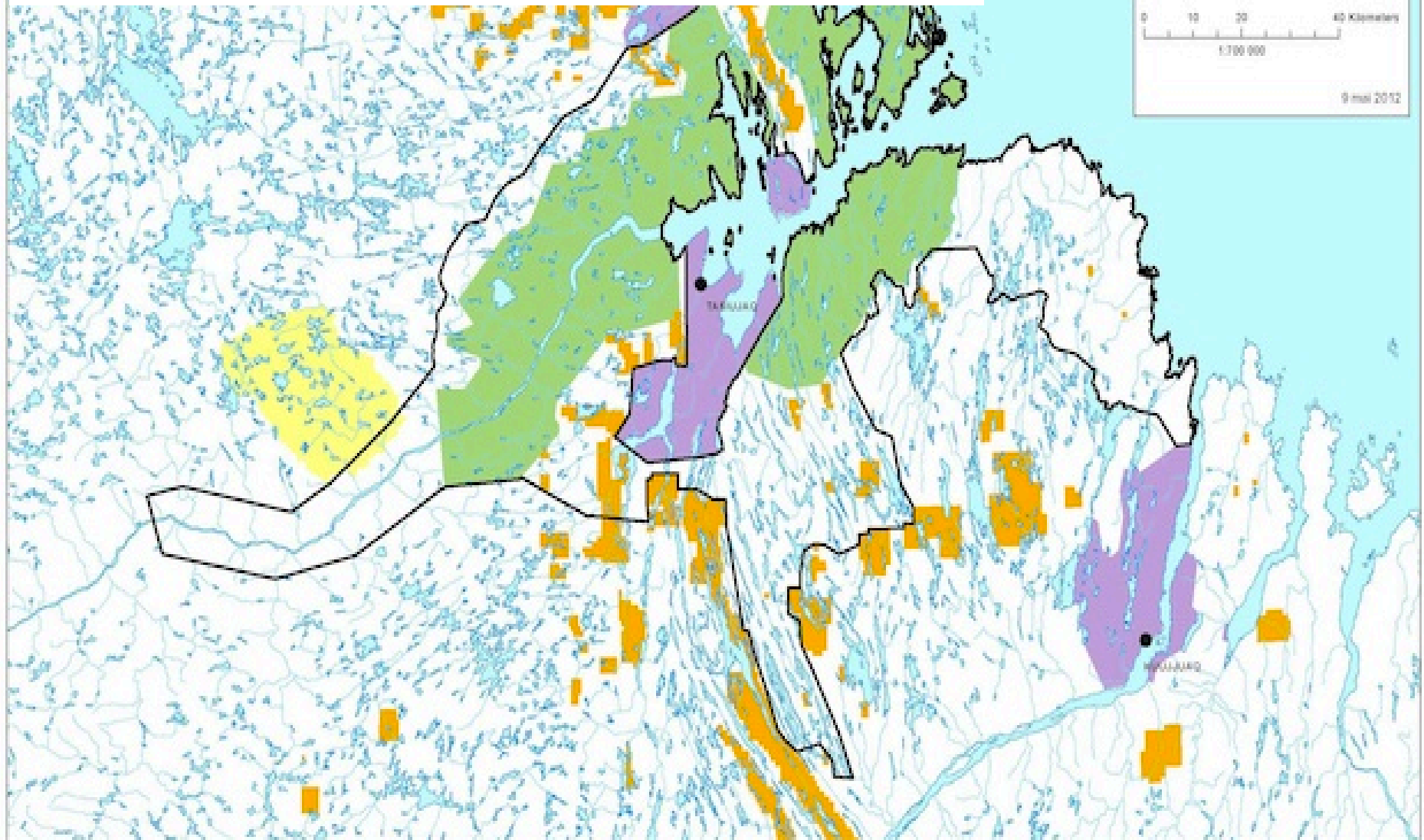
## 2. Establishment of a working group

*Établissement d'un groupe de travail*



### 3. Delimitation of a study area

#### *Delimitation de l'aire d'étude*



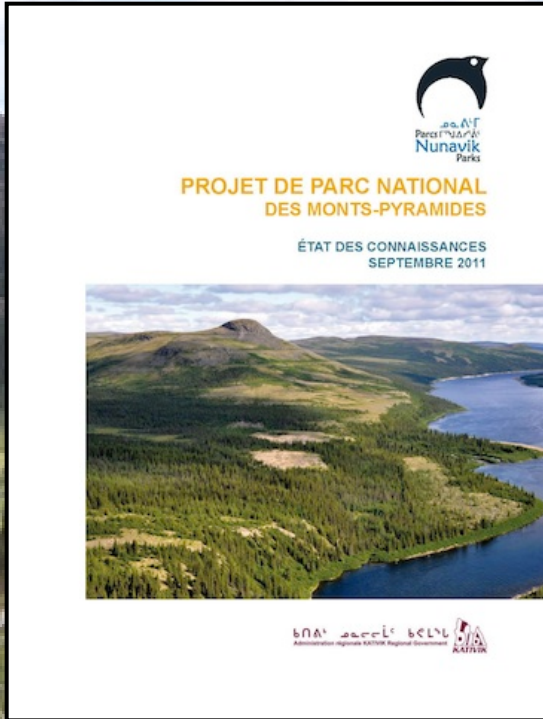
## 4. Field studies and literature review

*Études sur le terrain et revue de littérature*



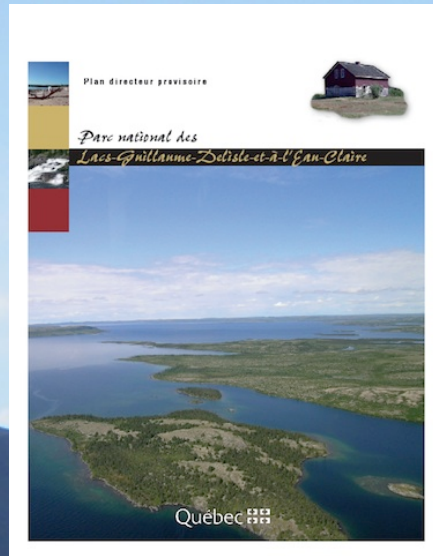
# 5. Status report

## *État des connaissances*



# 6. Provisional master plan

## *Plan directeur provisoire*

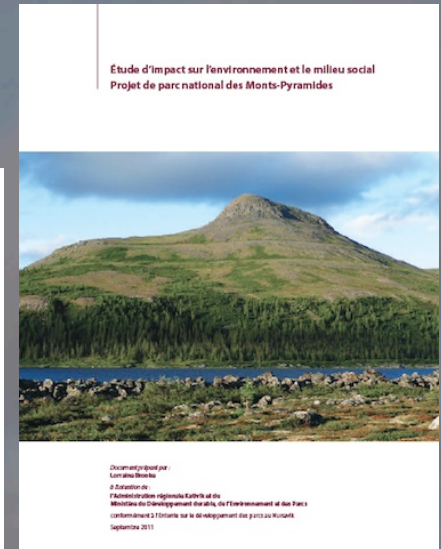


# 7. Impact studies

- Environmental and social
- Economic

## *Études d'impact*

- *Environnemental et social*
- *Économique*



# 8. Public hearings

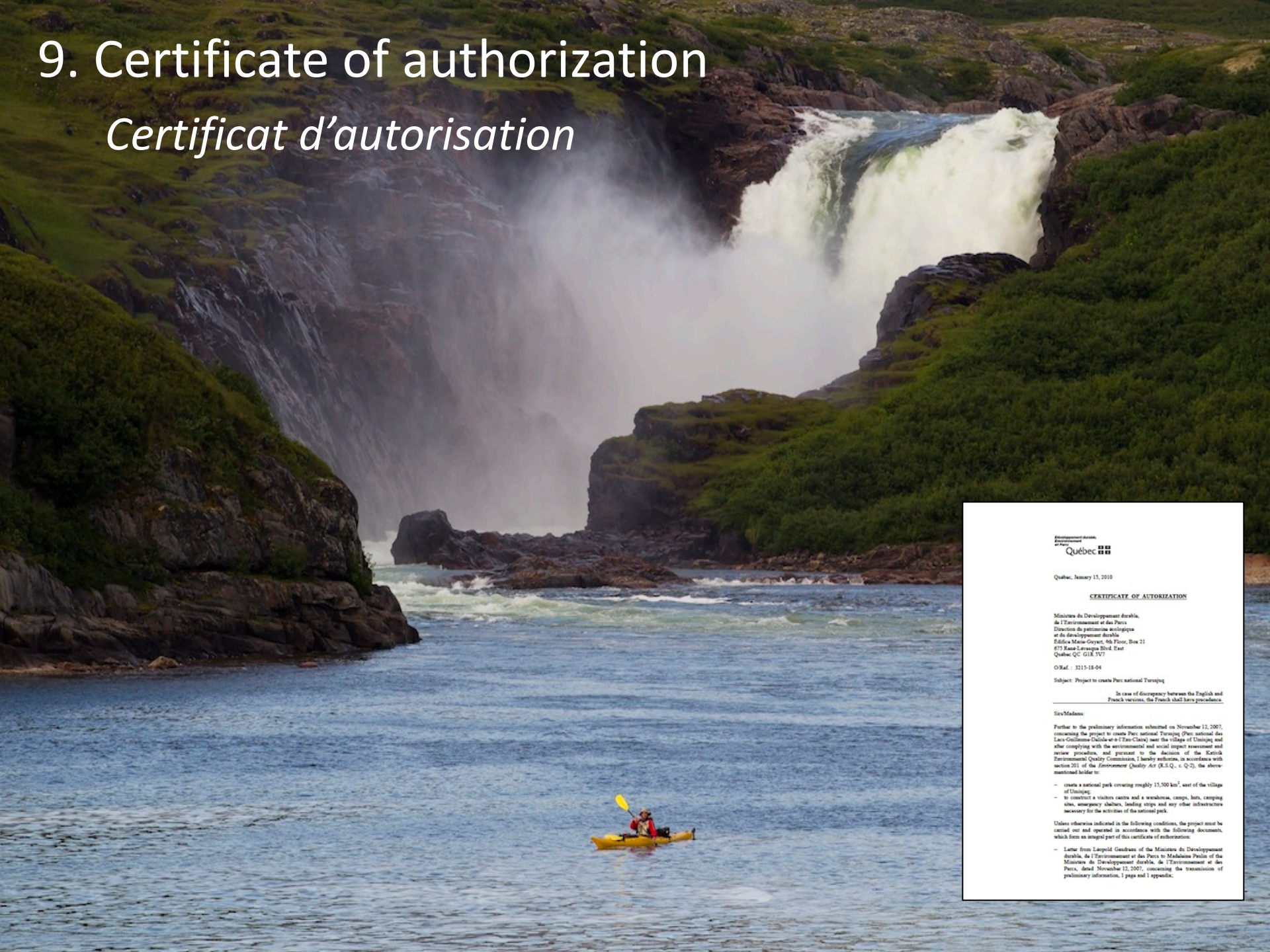
*Audiences publiques*





# 9. Certificate of authorization

## *Certificat d'autorisation*



Ministère de l'environnement,  
du patrimoine  
et du parc  
Québec

Québec, January 15, 2010

### CERTIFICATE OF AUTHORIZATION

Ministère du Développement durable,  
de l'Environnement et des Parcs  
Direction du patrimoine scientifique  
et du développement durable  
Édifice Marie-Guyart, 46 Floor, Box 21  
675 Rue Lévesque Blvd. East  
Québec QC G1R 7Y7

O/Raf. : 3215-18-04

Subject: Project to create Parc national Turang

In case of discrepancy between the English and  
French versions, the French shall have precedence.

Sirs/Madams:

Further to the preliminary information submitted on November 12, 2007,  
concerning the project to create Parc national Turang (Parc national des  
Lacs-Collines/Océan/du Fleuve/Chaudière) near the village of Turang and  
after complying with the environmental and social impact assessment and  
review procedure, and pursuant to the decision of the Kativik  
Environment Quality Commission, I hereby authorize, in accordance with  
section 201 of the Environment Quality Act (K.S.Q., c. Q-2), the above-  
mentioned holder to:

- create a national park covering roughly 15,500 km<sup>2</sup>, east of the village  
of Turang;
- to construct a visitors centre and a warehouse, camp, inn, camping  
sites, emergency shelters, landing strips and any other infrastructure  
necessary for the activities of the national park.

Unless otherwise indicated in the following conditions, the project must be  
carried out and operated in accordance with the following documents,  
which form an integral part of this certificate of authorization:

- Letter from Leopold Gauthier of the Ministère du Développement  
durable, de l'Environnement et des Parcs to Mathias Proulx of the  
Ministère du Développement durable, de l'Environnement et des  
Parcs, dated November 12, 2007, concerning the transmission of  
preliminary information, 1 page and 1 appendix.

# 10. Approval by Cabinet

*Approbation par le Conseil des ministres*



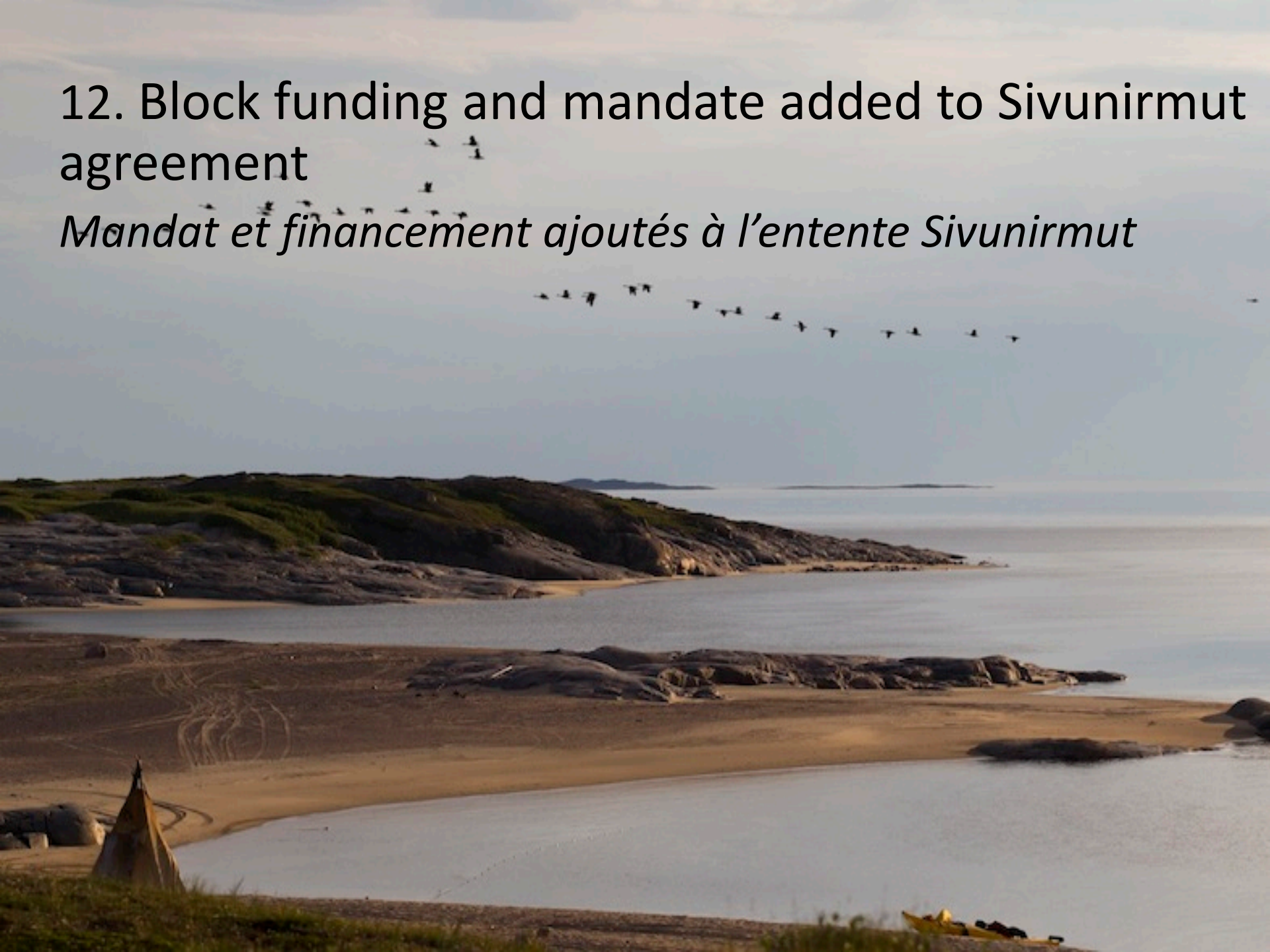
# 11. Park creation

*Création du parc*



# 12. Block funding and mandate added to Sivunirmut agreement

*Mandat et financement ajoutés à l'entente Sivunirmut*

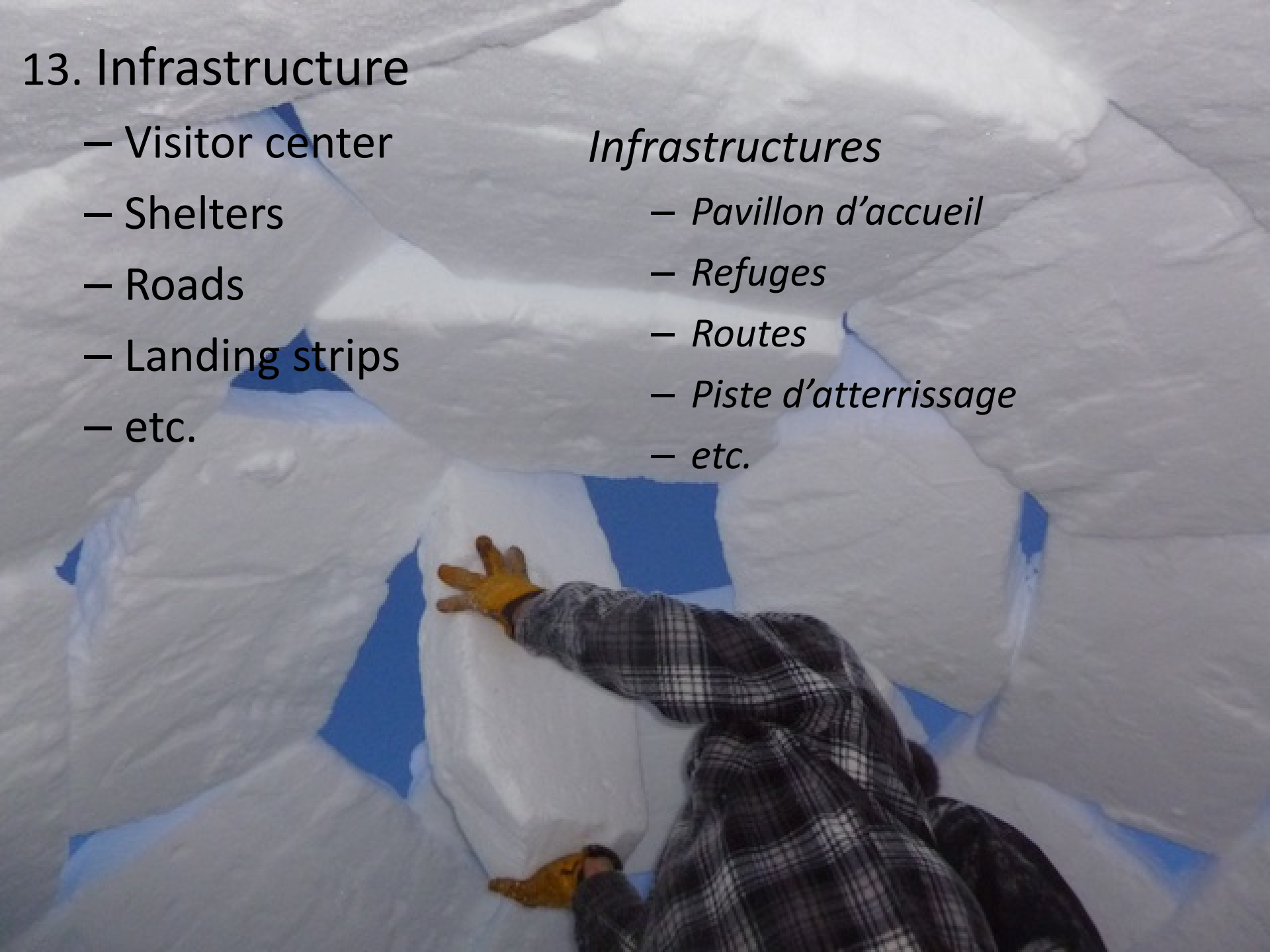


## 13. Infrastructure

- Visitor center
- Shelters
- Roads
- Landing strips
- etc.

### *Infrastructures*

- *Pavillon d'accueil*
- *Refuges*
- *Routes*
- *Piste d'atterrissage*
- *etc.*



## 14. Hiring and training of staff

- Director
- Park wardens
- Administrative technicians
- Visitor experience agent

### *Embauche et formation des employés*

- *Directeur*
- *Gardes de parc*
- *Techniciens administratifs*
- *Agent de séjour*

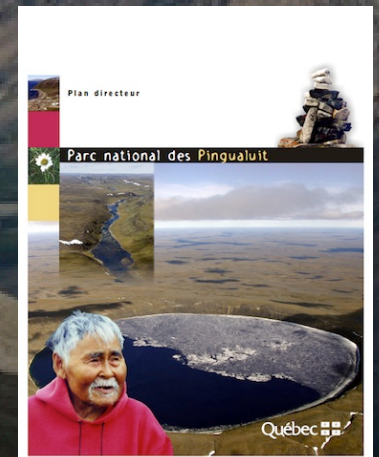


# 15. Planning and monitoring

- Harmonization Committee
- Master Plan
- Conservation Plan
- Education Plan
- Emergency Plan
- Business Plan
- Communication Plan
- Research Plan

## *Planification et suivi*

- Comité d'harmonisation*
- Plan directeur*
- Plan de conservation*
- Plan d'éducation*
- Plan des mesures d'urgence*
- Plan d'affaires*
- Plan de communication*
- Plan de recherche*



Nakurmik!

Thank you!

Merci!

























































ATTITUDE  
MONTAGNE  
PETZL

KRPF  
Cadet Program















































265











