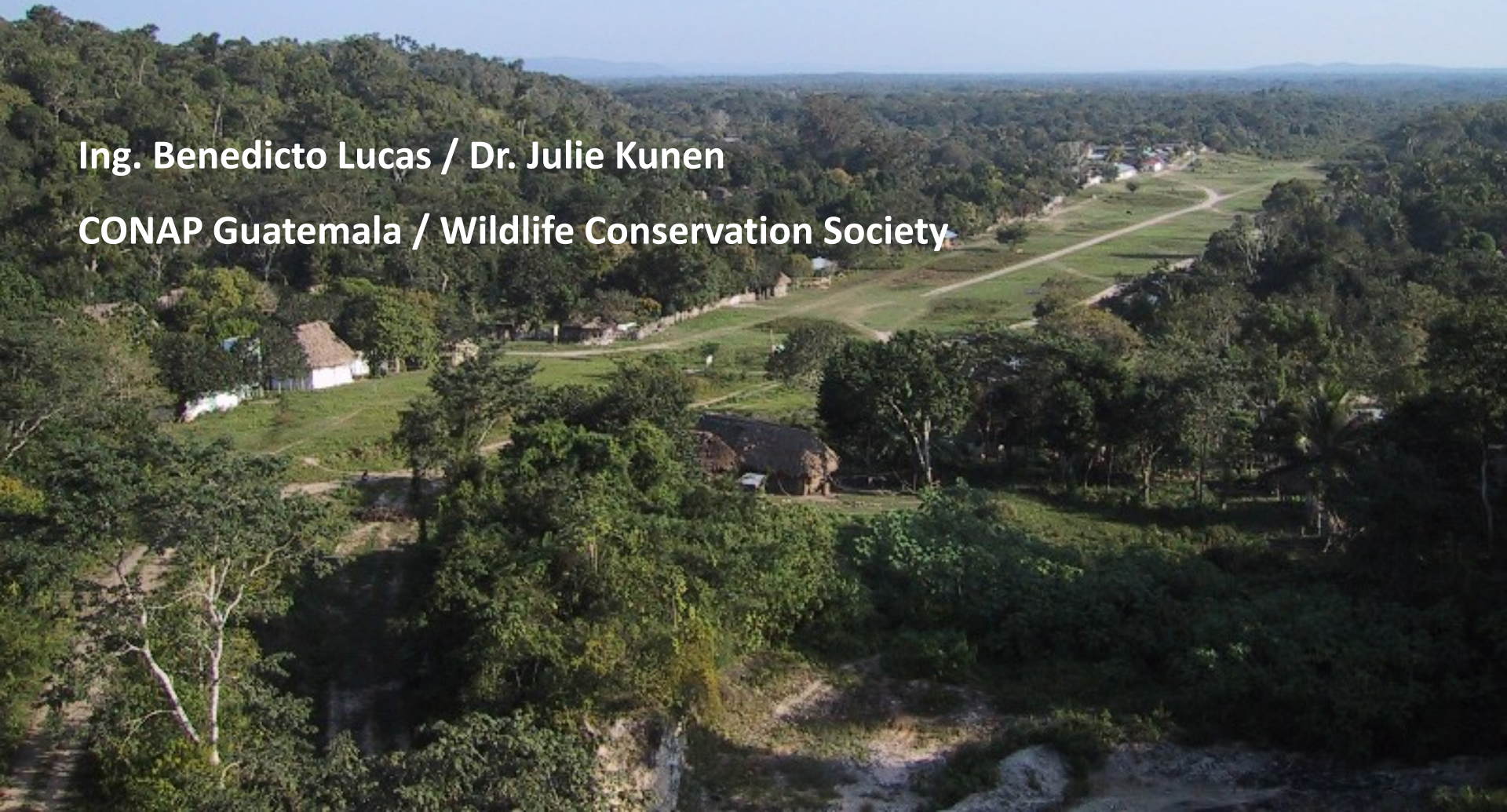


# **Traditional Fire Management and Climate Mitigation:**

## **The Case of Guatemala's Maya Biosphere Reserve**

**Ing. Benedicto Lucas / Dr. Julie Kunen**

**CONAP Guatemala / Wildlife Conservation Society**



Since 1895, WCS has helped create or expand  
245 protected areas worldwide.

Today, WCS helps manage or support protected  
areas in 60 countries.



## We urge WPC participants to:

- Encourage countries to meet the Aichi targets for protected area creation & management
- Focus on large, intact systems with high biodiversity
- Engage civil society to assist





# Maya Forest



# Forest Fires



# El Niño





# Maya Biosphere Reserve

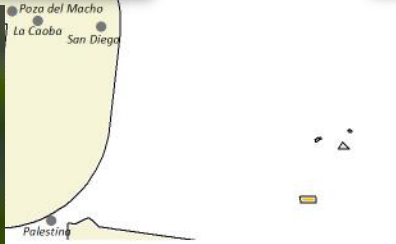


## ***Paso Caballos:***

2000 people, 99% Q'eqchi'  
Maya, Laguna del Tigre NP

## ***Uaxactun:***

1200 people, 95% Ladino,  
Community forest concession

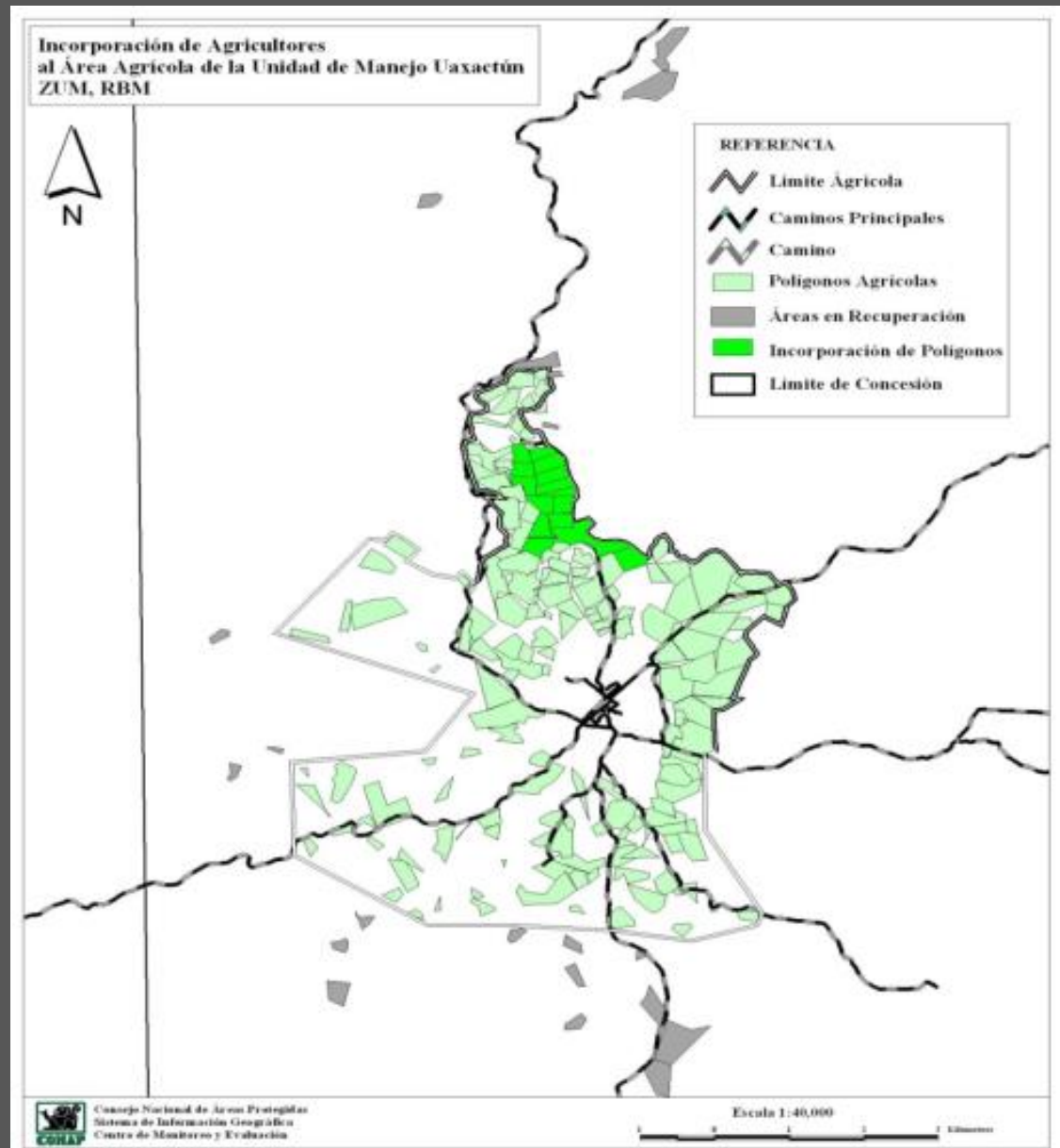


# Approach



# Territorial Planning & Agriculture

- 21 “satellite” agricultural plots relocated (157 ha)
- All agriculture plots now in authorized polygon



# Implementation of Early Warning System for Fire in Local Communities



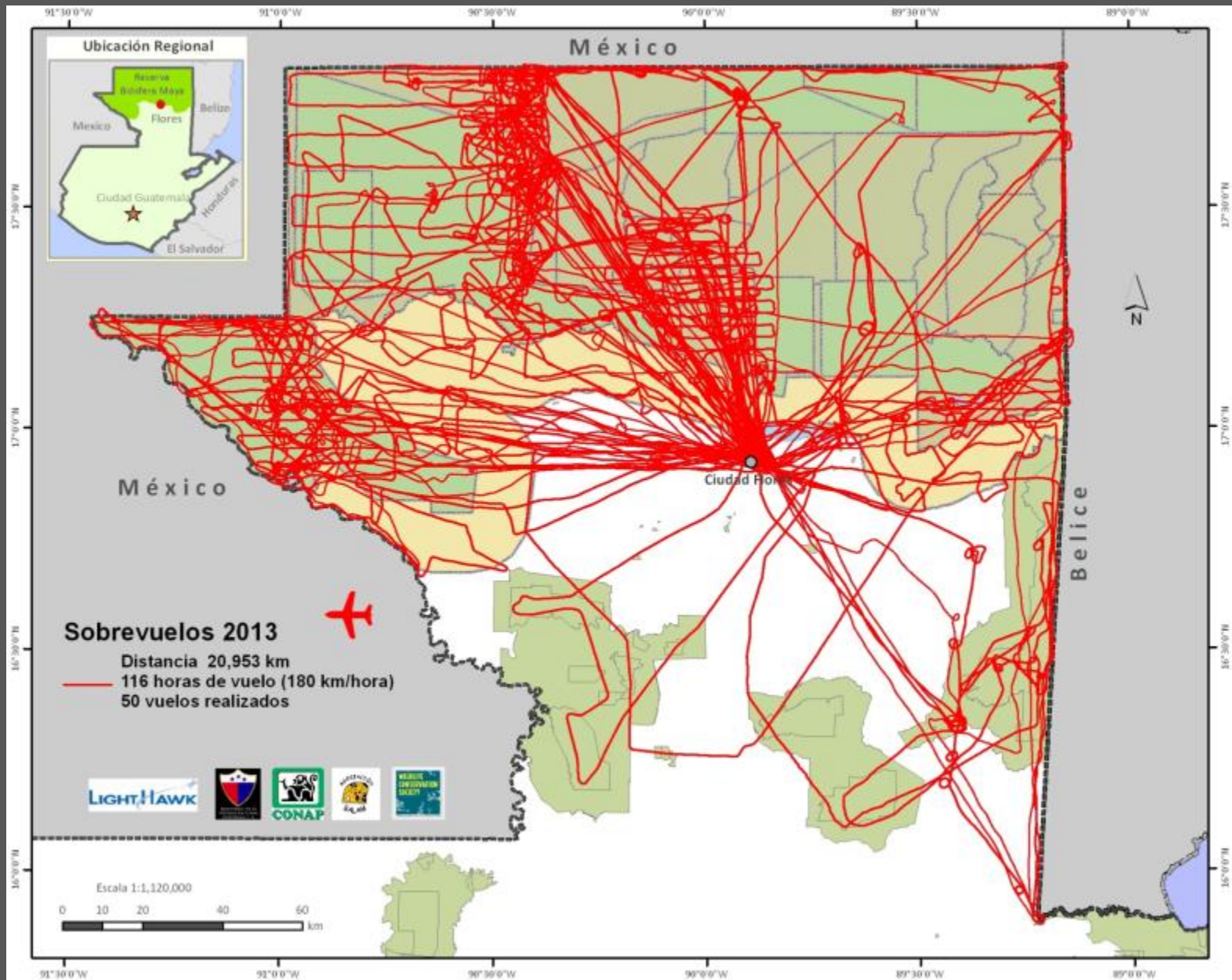


# Territorial Control and Protection

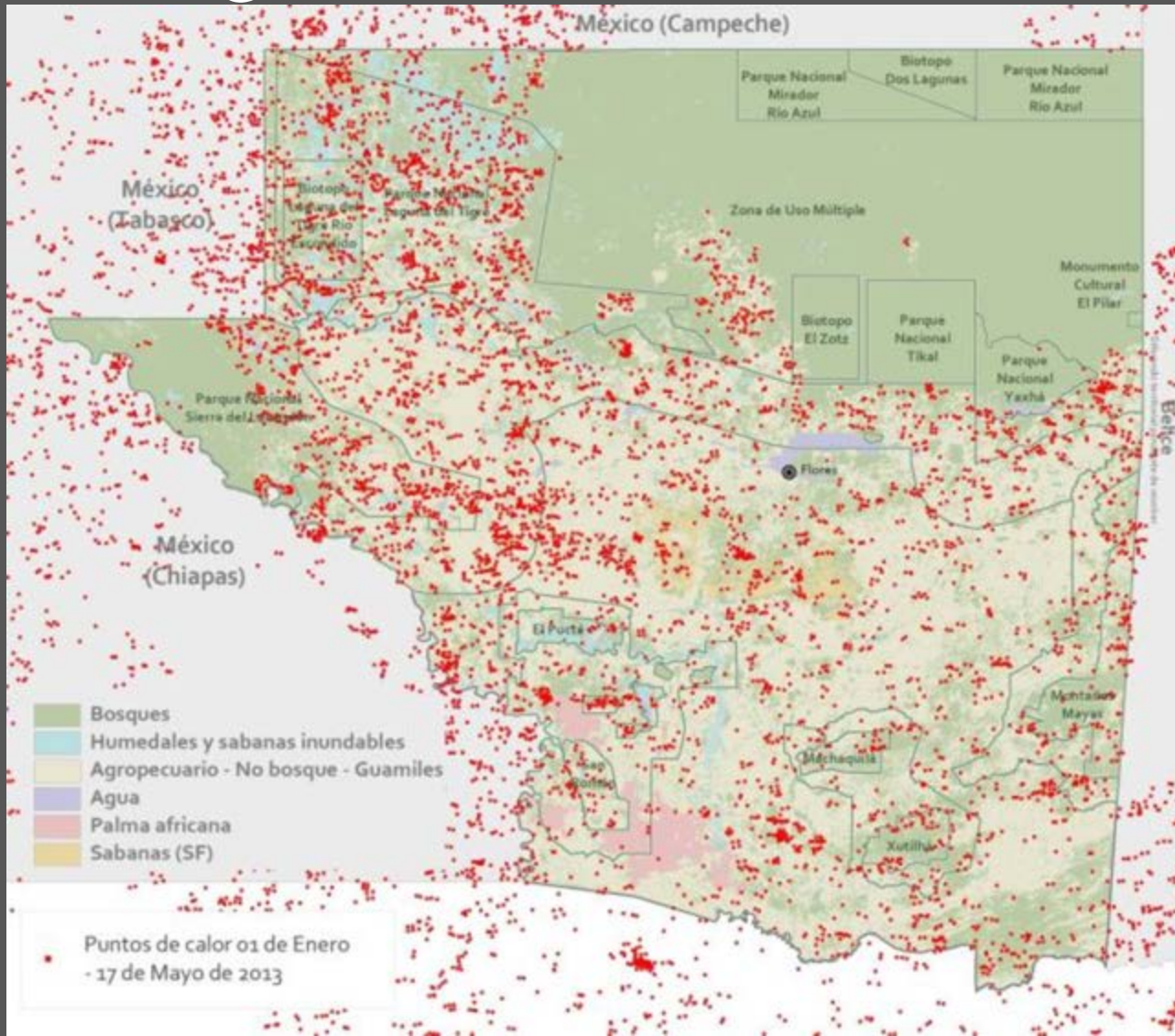




# Territorial Control and Protection

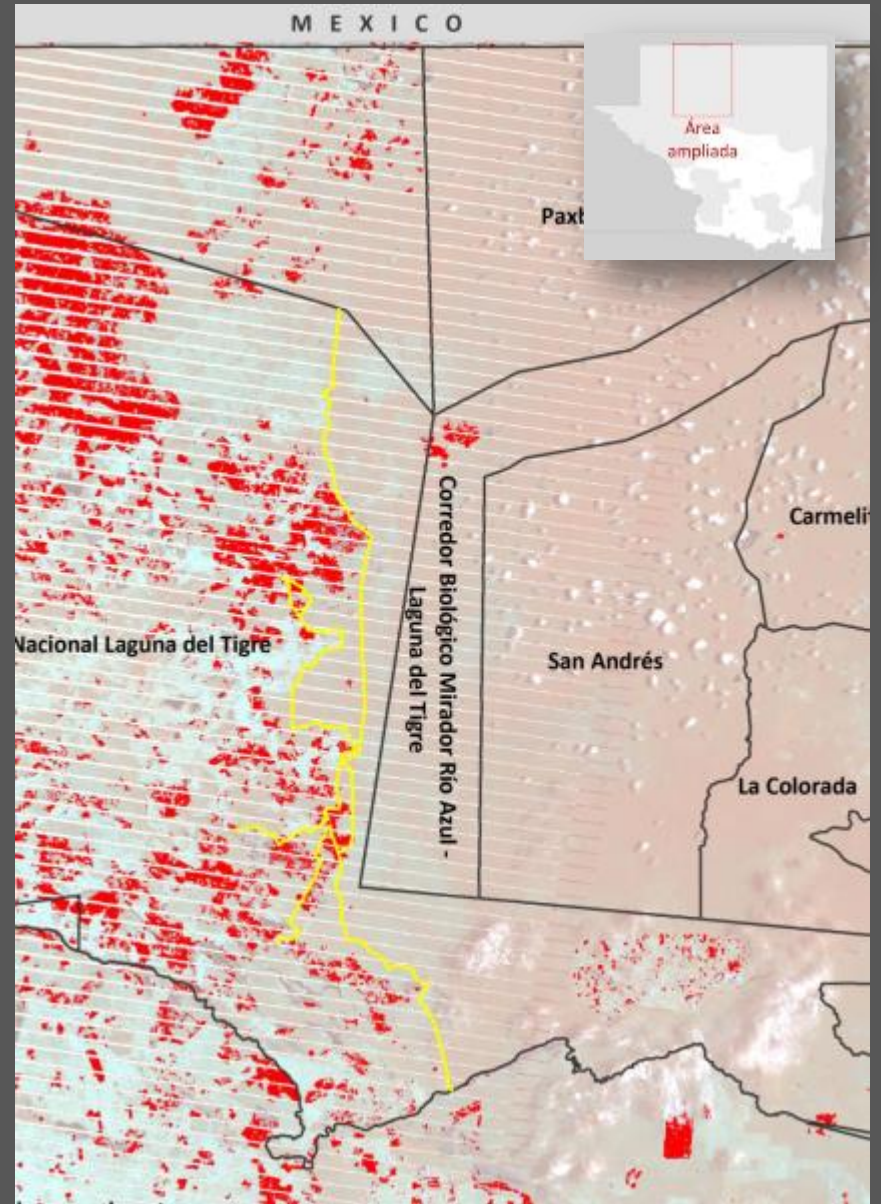
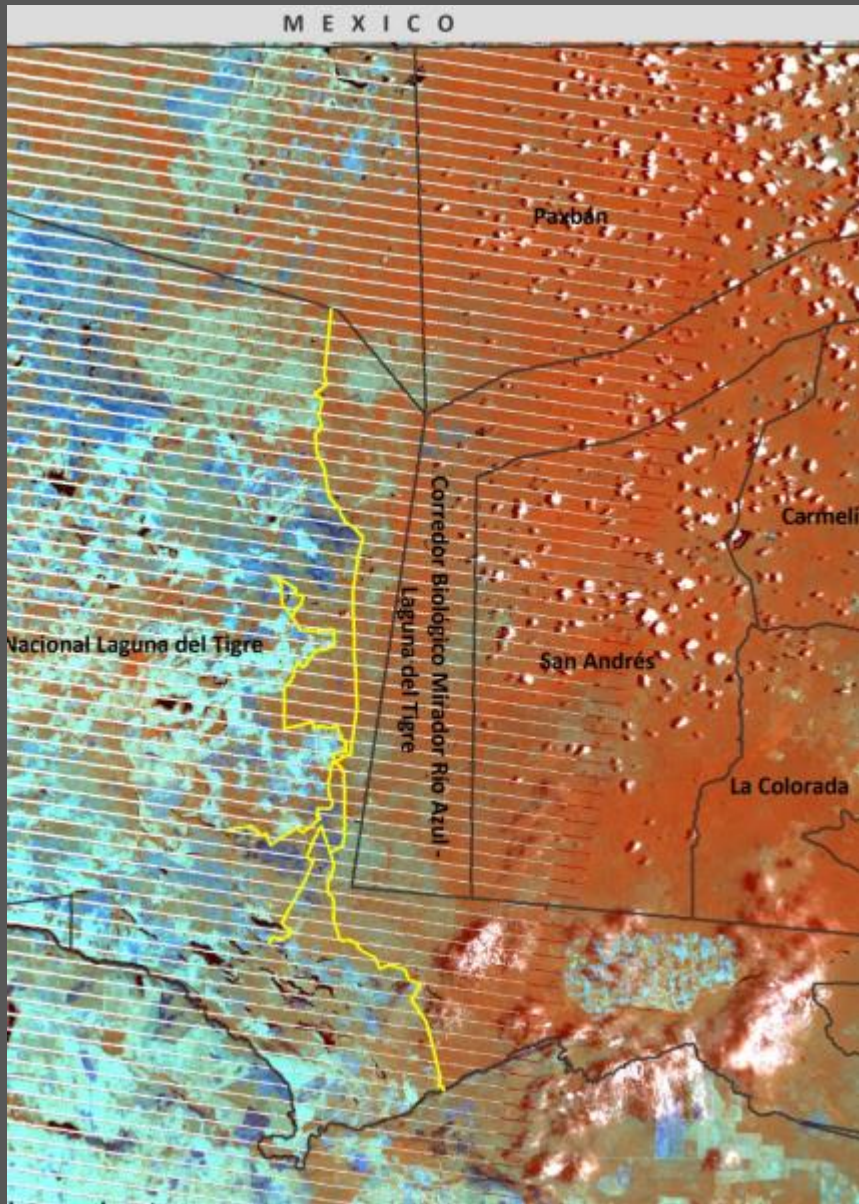


# Weather and Fire Monitoring during Fire Season (CEMEC)





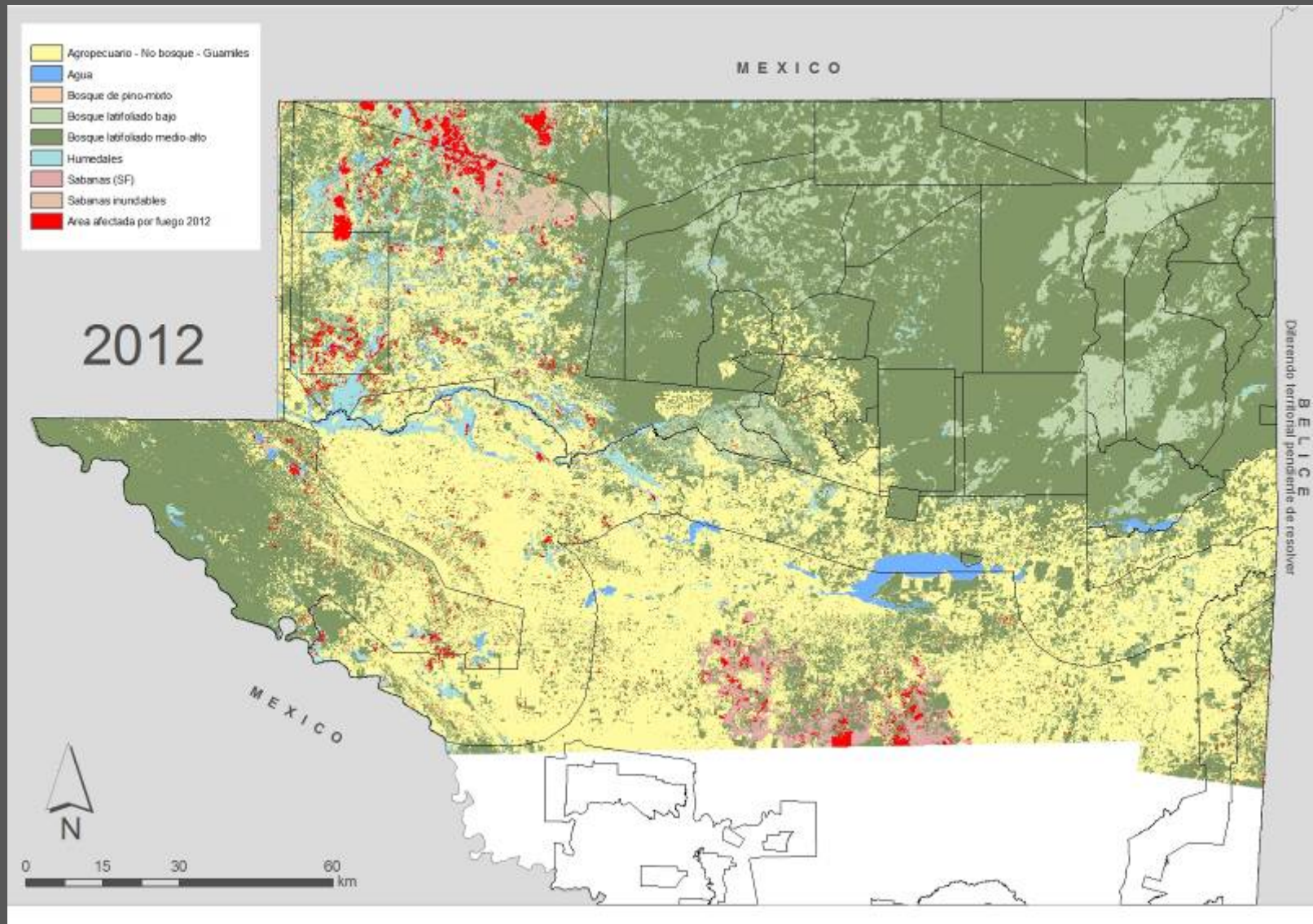
# Evaluation of Fire Impact



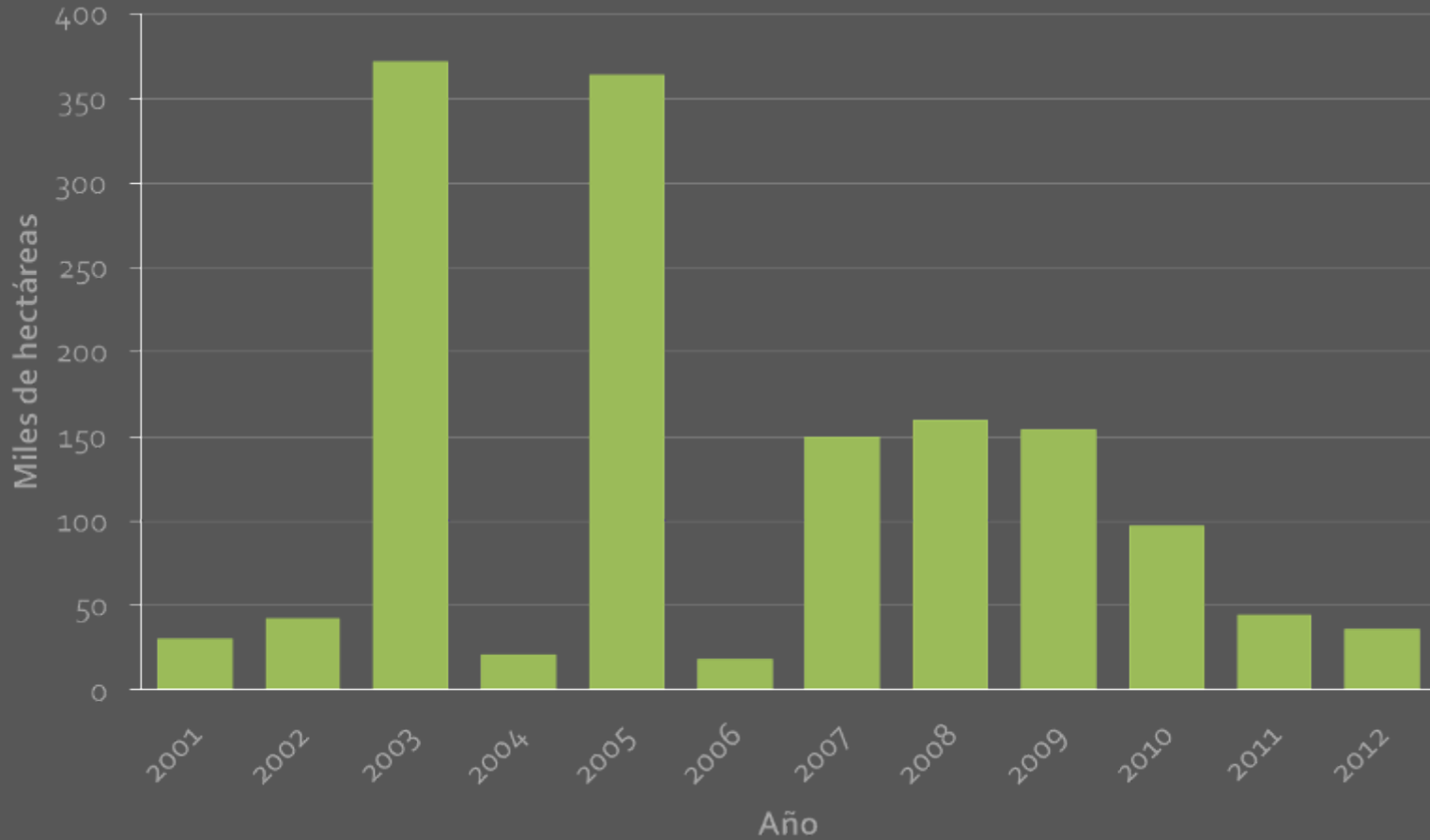


# **Contribution to Climate Mitigation and Adaptation**

# HECTARES AFFECTED BY FIRE



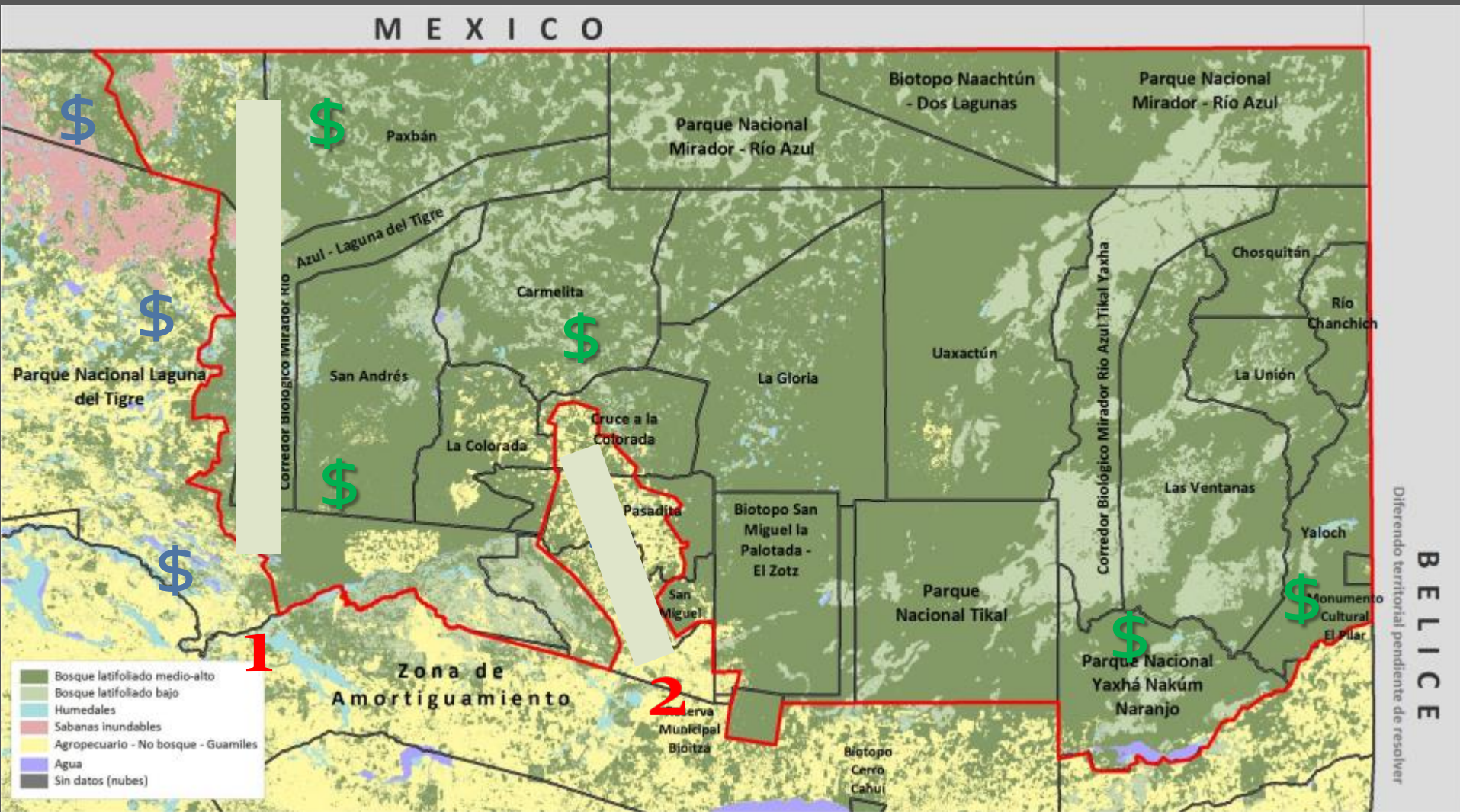
# HECTARES AFFECTED BY FIRE



Superficies afectadas por el fuego 2001-2012



# "The Shield"





# Lessons Learned

- 1. Fire prevention is far superior to fire suppression.*
- 2. Key to engage local communities to ensure traditional agricultural activities while reducing fire risk*
- 3. CONAP's supervisory role has been paramount*
- 4. Over flights identify high threat areas prior to the burning season, allowing targeted mitigation activities*

# Thank you



For more information, please visit:

**@THEWCS**

**WPC.WCS.org**

**WCSlatinamerica@wcs.org**

