

Becoming the Forest and the Sea

Reframing indigenous partnerships
to advance biodiversity conservation

Chris Filardi, Director of Pacific Programs



AMERICAN MUSEUM OF NATURAL HISTORY

CENTER FOR BIODIVERSITY AND CONSERVATION



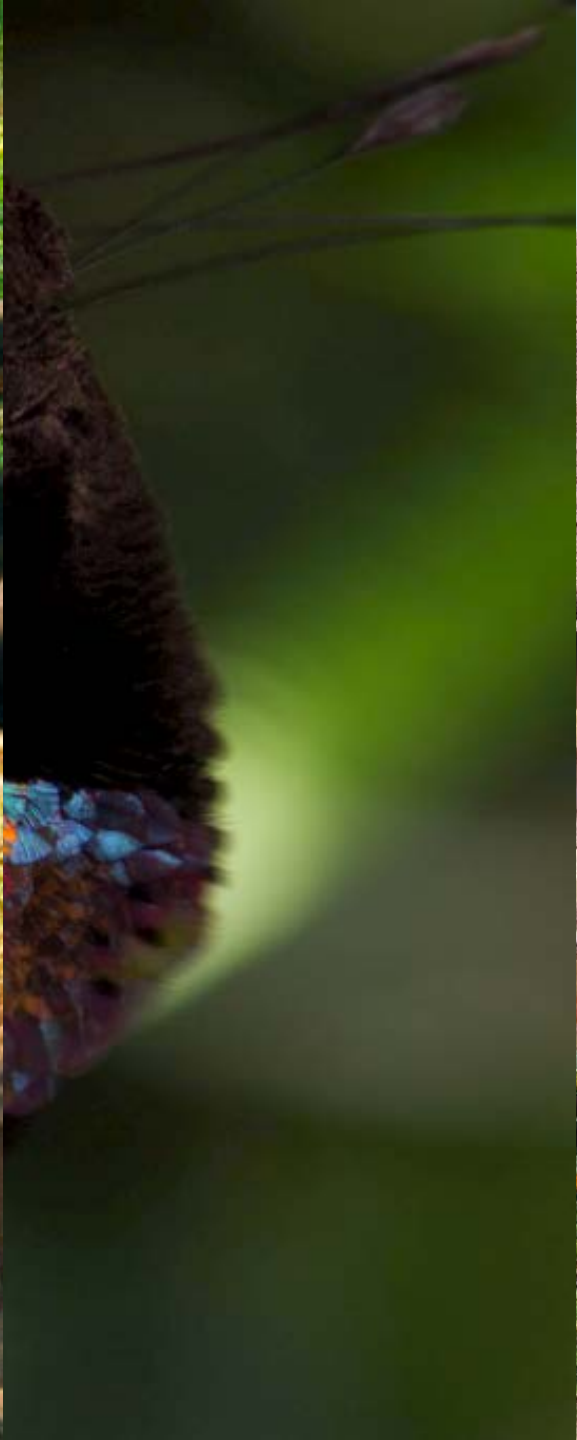
© TIM LAMAN













Achieving Equitable Management



- Reframing the question

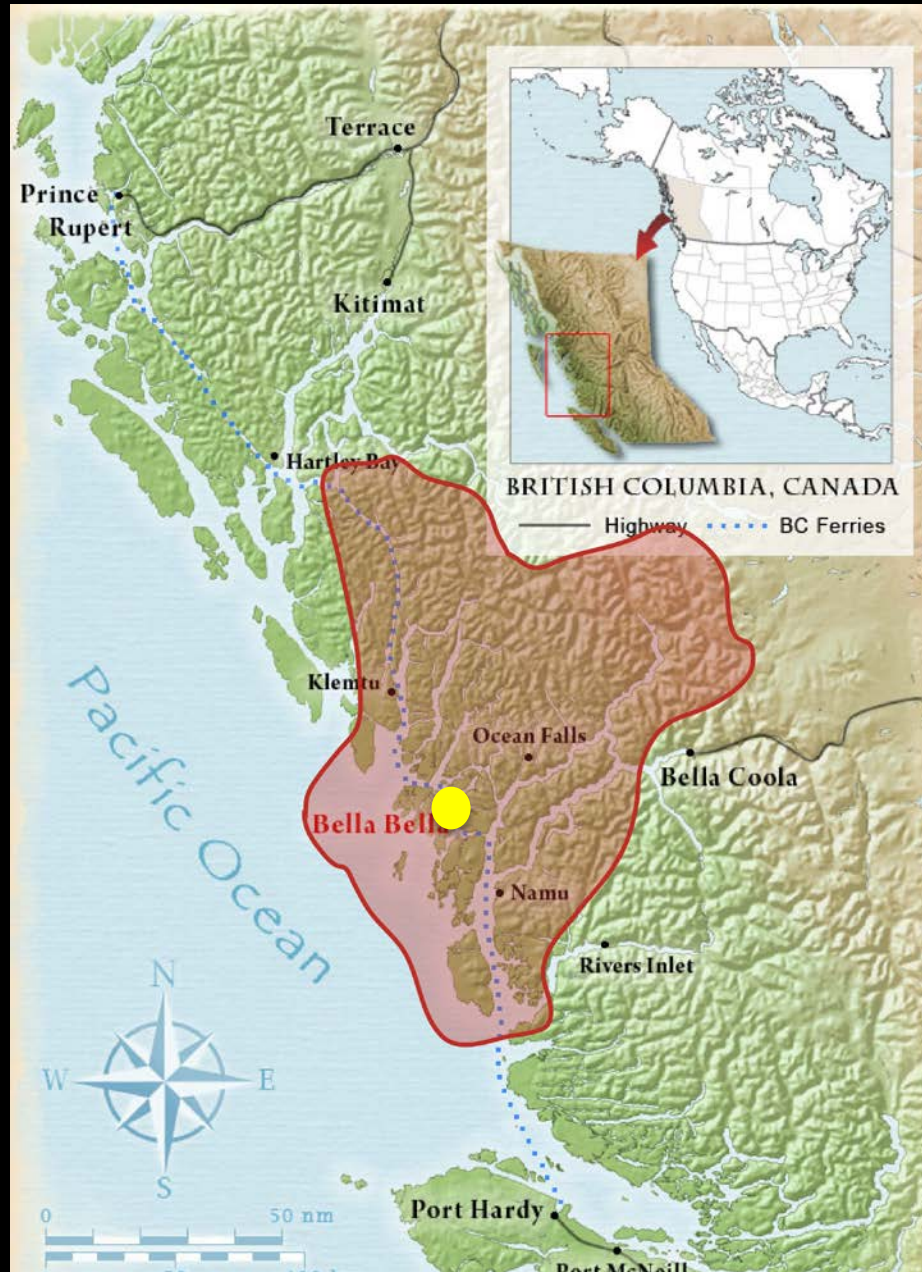








Heiltsuk Traditional Territory











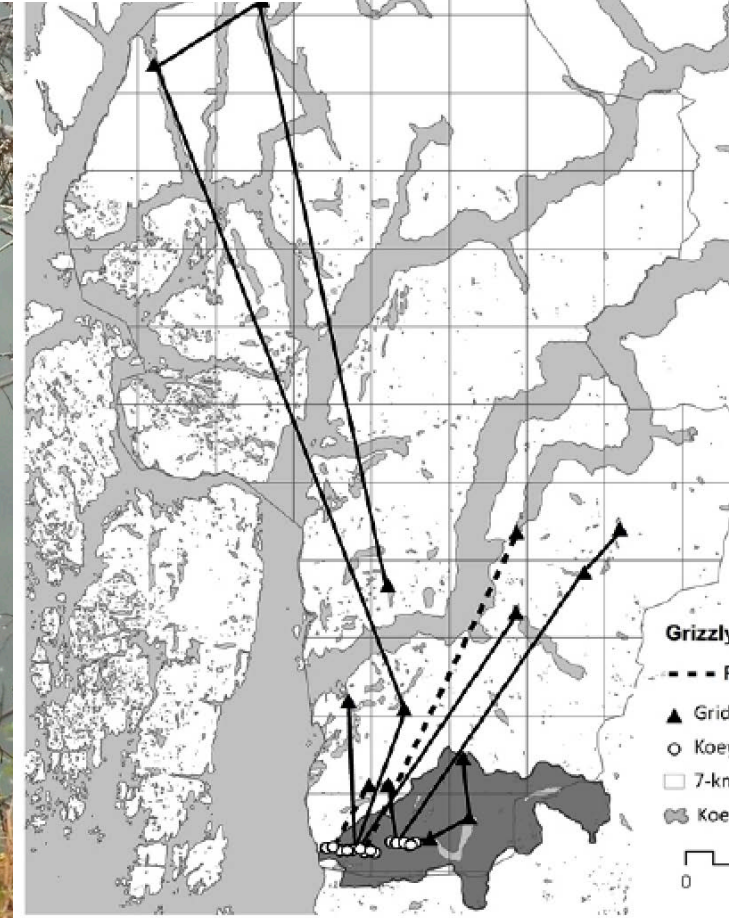
Copyright © 2014 by the author(s). Published here under license by the Resilience Alliance.
Housty, W. G., A. Noson, G. W. Scoville, J. Boulanger, R. M. Jeo, C. T. Darimont, and C. E. Filardi. 2014. Grizzly bear monitoring by the Heiltsuk people as a crucible for First Nation conservation practice. *Ecology and Society* 19(2): 70. <http://dx.doi.org/10.5751/ES-06668-190270>



Research, part of a Special Feature on [Coupled Human-Coastal Ecosystems: Building Resilience Through Teaching and Research Partnerships](#)

Grizzly bear monitoring by the Heiltsuk people as a crucible for First Nation conservation practice

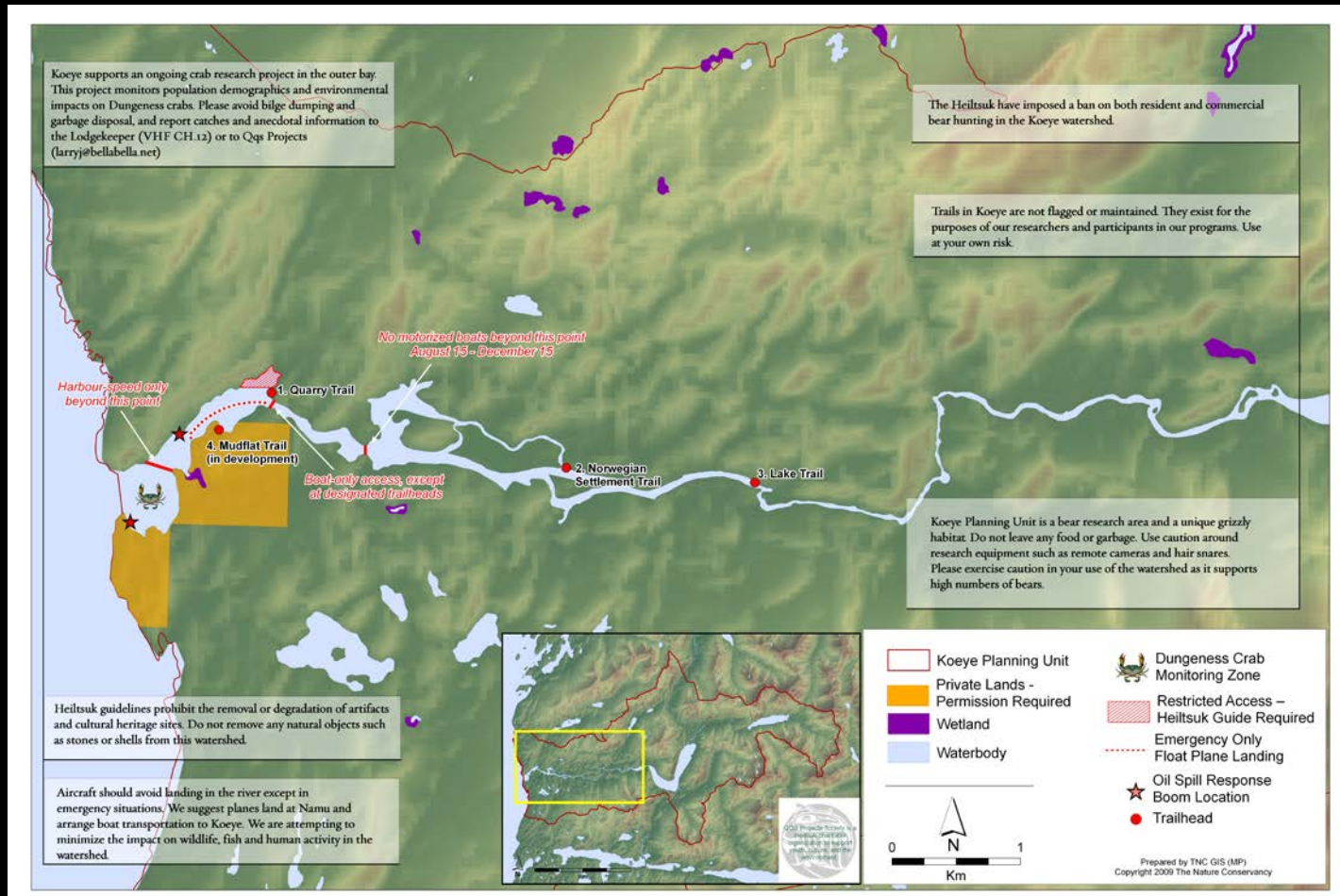
[William G. Housty](#)¹, [Anna Noson](#)², [Gerald W. Scoville](#)³, [John Boulanger](#)⁴, [Richard M. Jeo](#)⁵, [Chris T. Darimont](#)^{6,7} and [Christopher E. Filardi](#)⁸

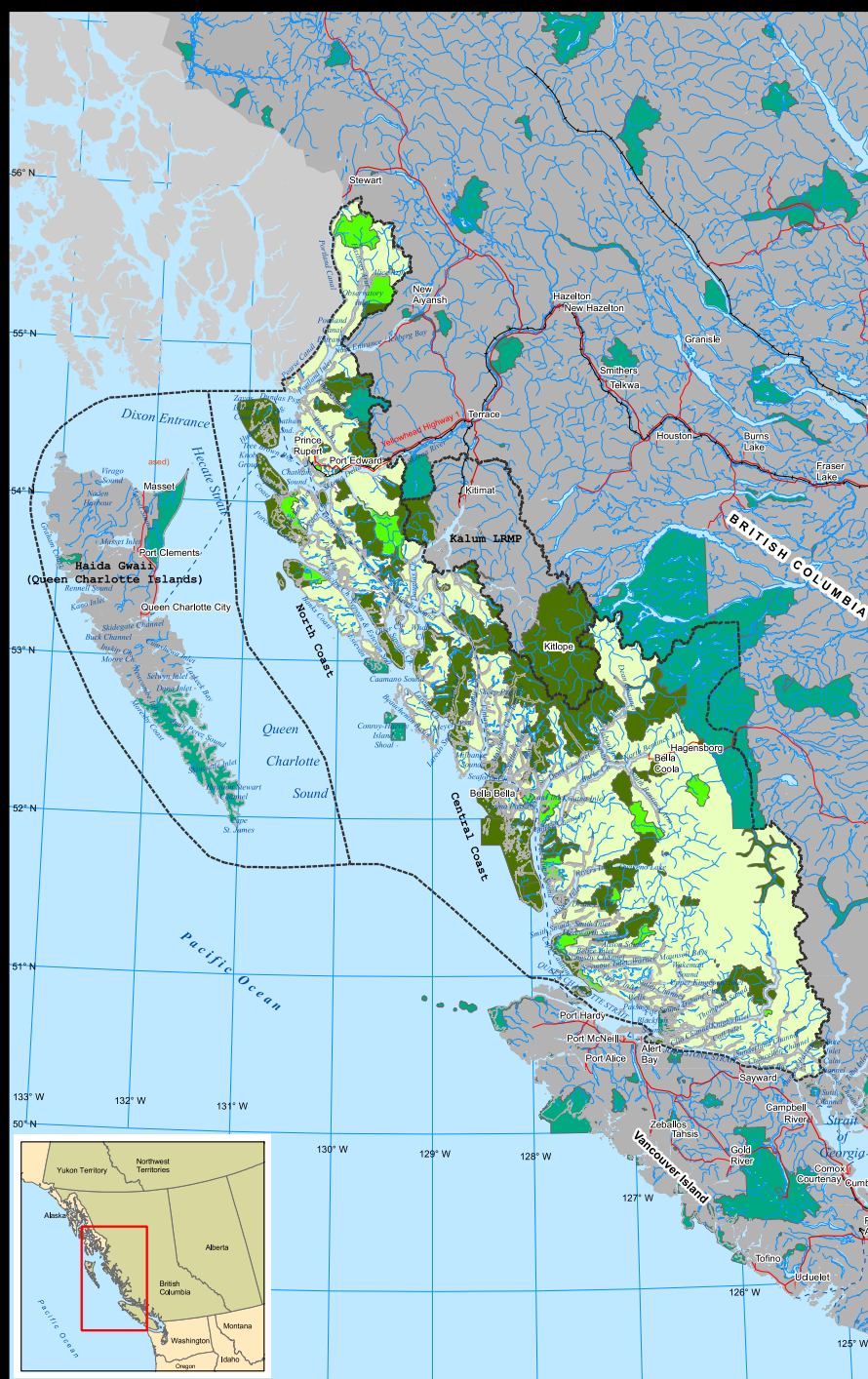






Koeye Management Plan







Achieving Equitable Management



- Reframing the question
- Transferring Power and Governance



Kolombangara





Achieving Equitable Management



- Reframing the question
- Transferring Power and Governance
- Realigning Values













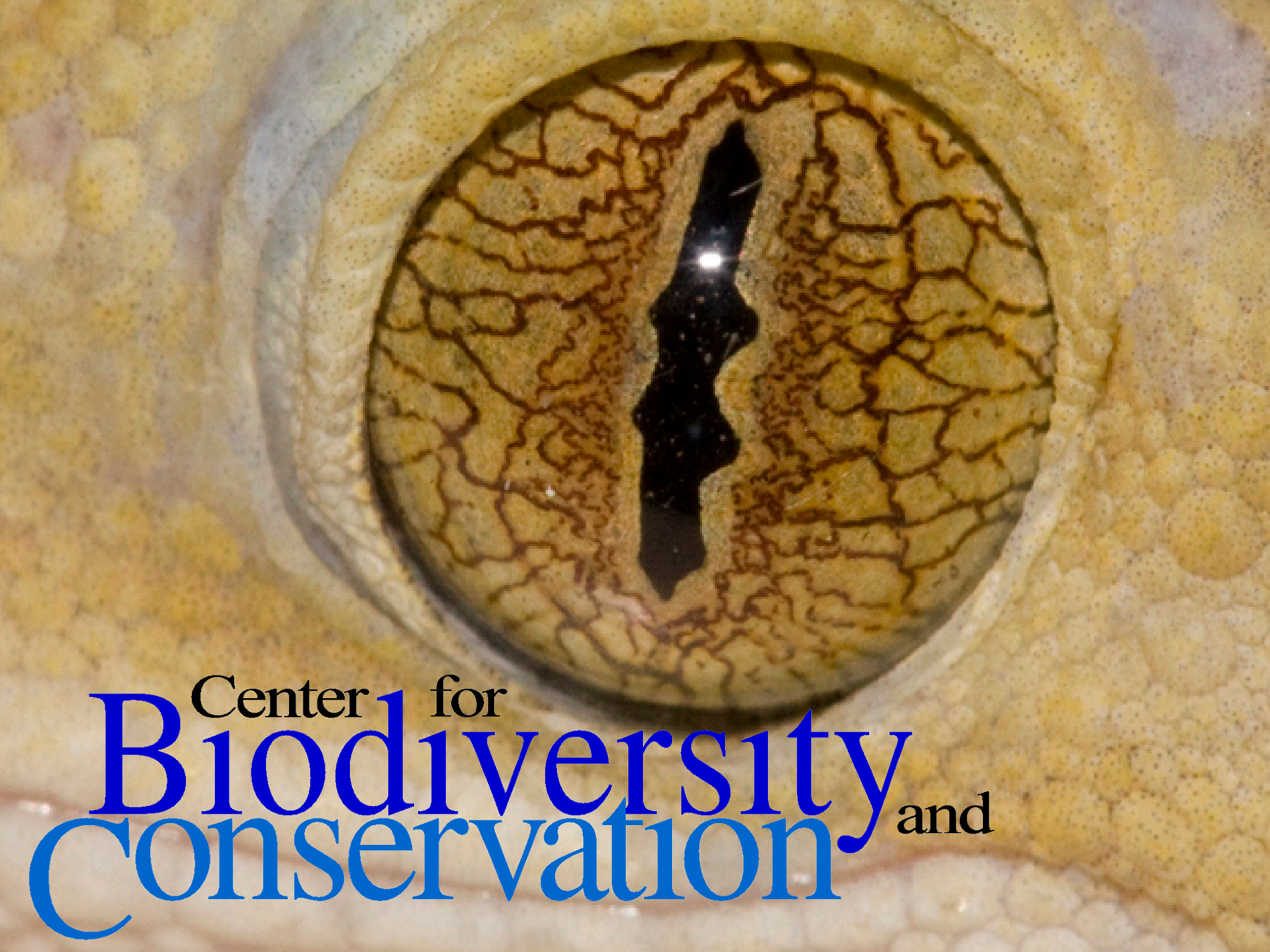












Center for
Biodiversity
Conservation and



AMERICAN MUSEUM
OF NATURAL HISTORY



SICCP

Solomon Islands Community
Conservation Partnership

MacArthur
Foundation



CRITICAL ECOSYSTEM
PARTNERSHIP FUND



QQS Projects Society



