

Southern Fijian Perspectives on Community-based Marine Resource Conservation

Mark A. Calamia, PhD
(Consultant)

IUCN World Parks Congress
Sydney, Australia 12-19 Nov. 2014



Acknowledgements

People of Yanuca Community, Fiji
Partners in Community Development, Fiji
Brent Diamond, Contractor
Michael Merrill PhD, Contractor
Pacific Blue Foundation, NGO



Conference of the Parties (COP) 2010

Revised & Updated Strategic Plan for Biological Diversity
2011-2020 period, Including Aichi Biodiversity Targets from
Conference of the Parties (COP) October 2010, Nagoya,
Aichi Prefecture, Japan



Aichi Biodiversity Target 11

By 2020, at least 17% of the terrestrial and inland water areas and 10% of coastal and marine areas, especially areas of particular importance for biodiversity and ecosystem services, are conserved through effectively and equitably managed, ecologically representative and well-connected systems of protected areas and other effective area-based conservation measures, and integrated into the wider landscape and seascape.



Effective & Equitable Management (one condition of Target 11)

Areas conserved should have:

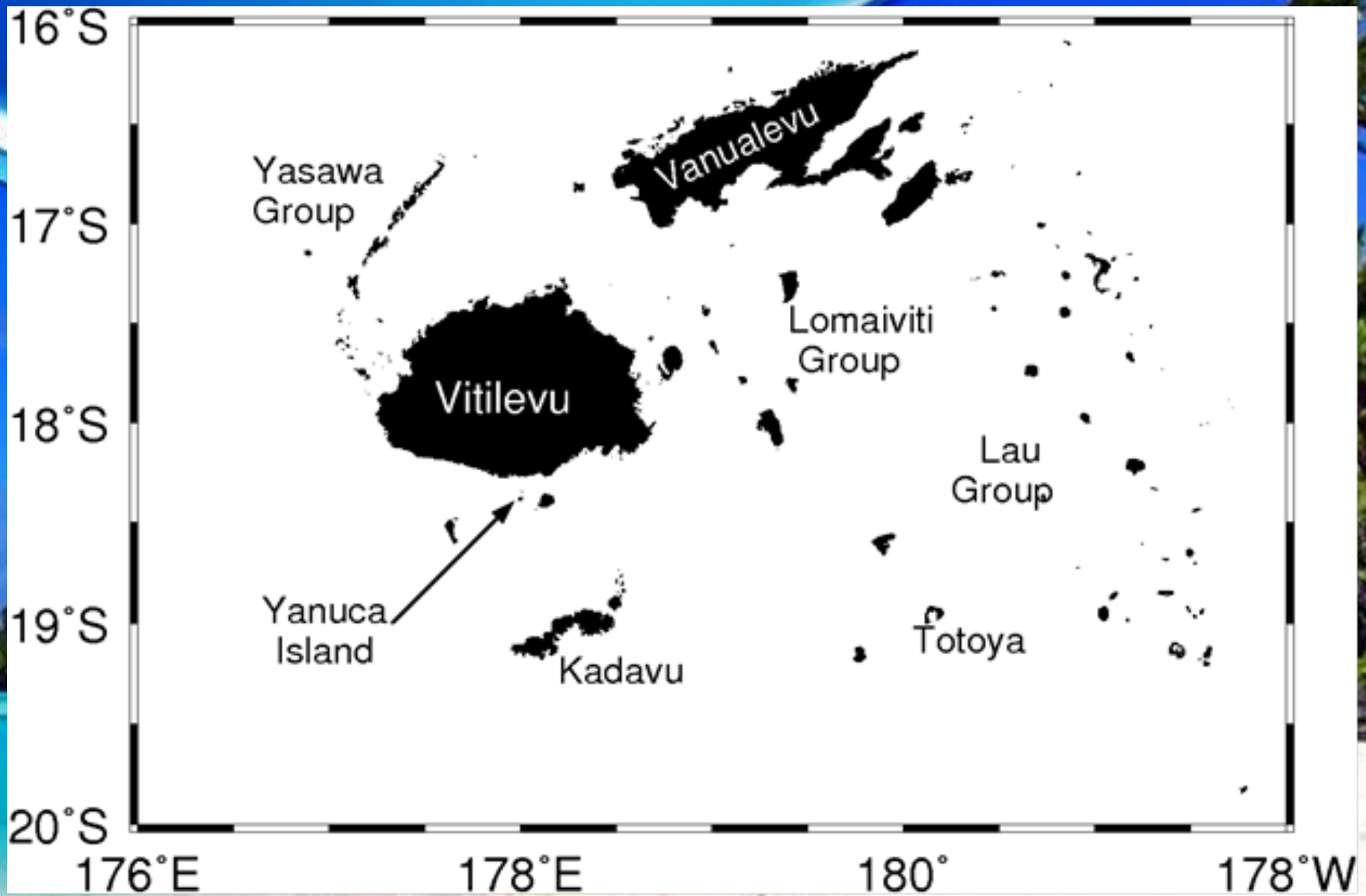
- Planning measures in place to ensure ecological integrity & protection of species, habitats, & ecosystems processes
- Full participation of indigenous & local communities
- Costs and benefits of the areas equally shared



Fiji Islands in Global Perspective



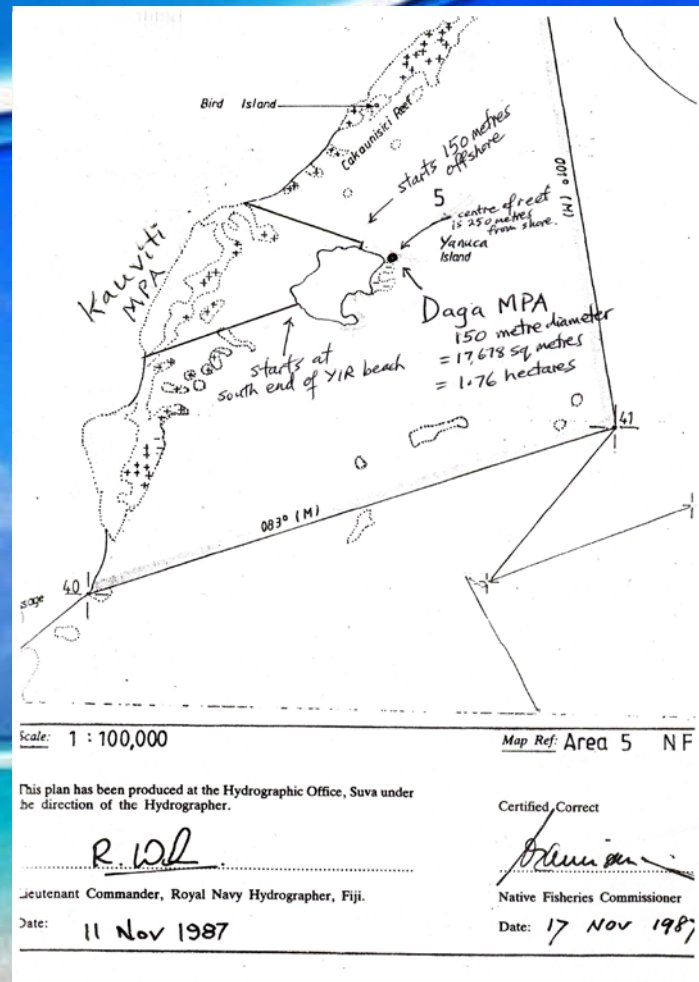
Location of Yanuca Island, Fiji



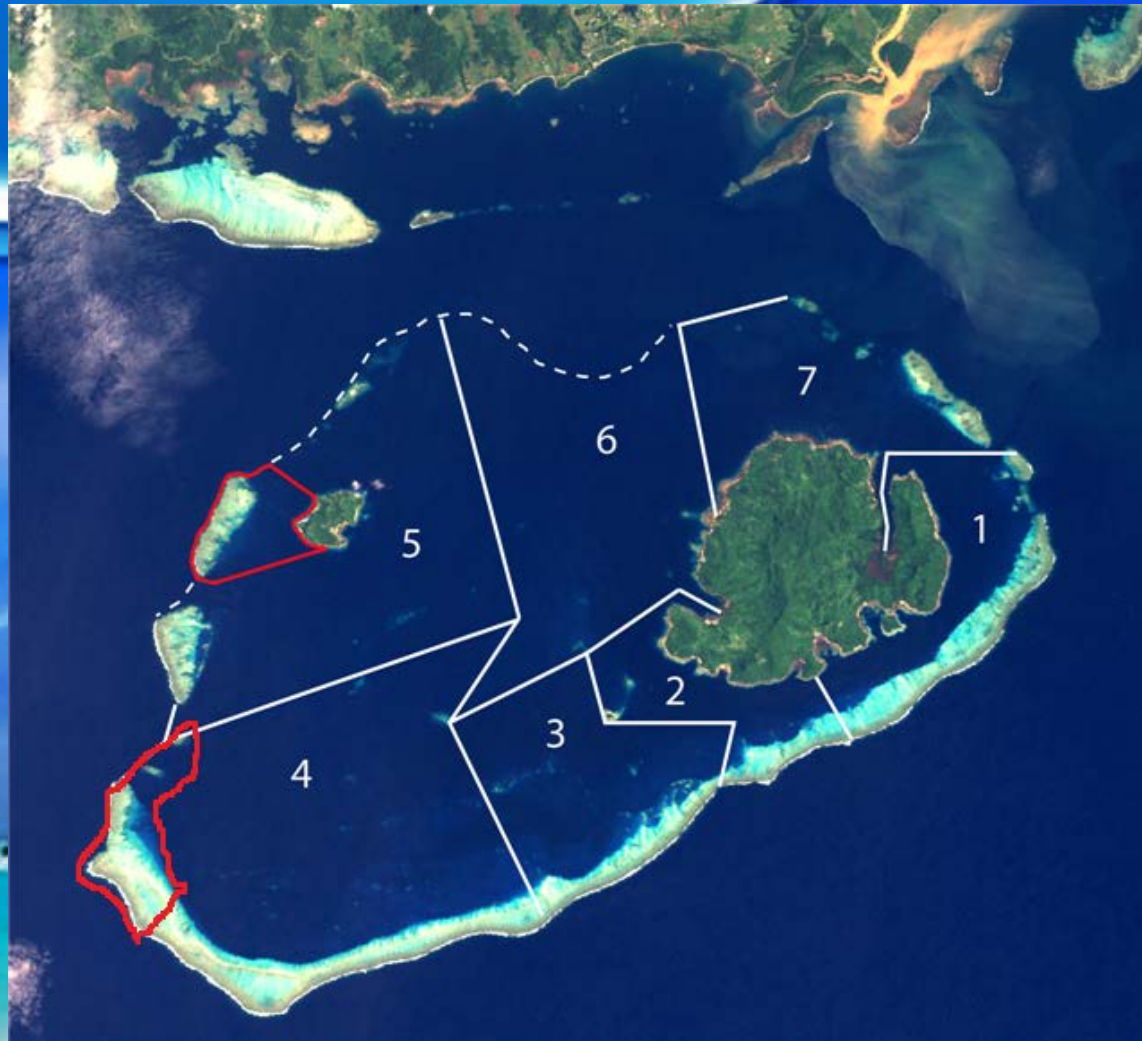
Yanuca Island Marine Conservation Areas



Yanuca Community Customary Fishing Grounds Registration Map with Marine Conservation Areas Identified



Beqa Lagoon Locally Managed Marine Conservation Areas



Yanuca Island

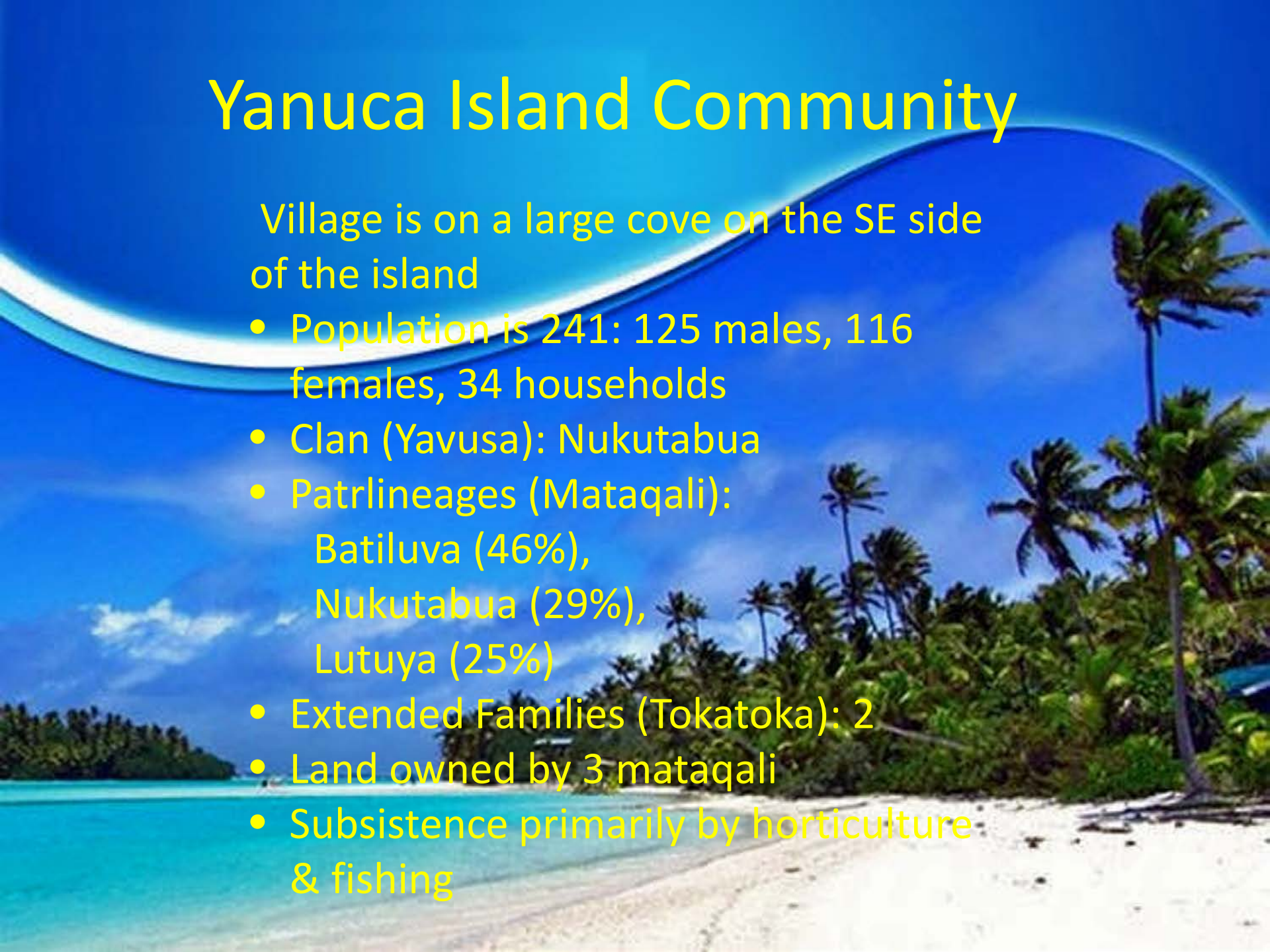
- Island 2 square km, just south of Viti Levu in Beqa Lagoon
- Has fringing reef on the perimeter of an extinct submarine volcano
- Surrounded by exclusive customary fishing rights areas (qoliqoli)
- Exclusive Qoliqoli is 77 square km.
- Extensive coral reefs
- Hills for growing taro, kava, and vegetables
- Family vegetable and fruit gardens



Yanuca Island Community

Village is on a large cove on the SE side of the island

- Population is 241: 125 males, 116 females, 34 households
- Clan (Yavusa): Nukutabua
- Patrilineages (Mataqali):
 - Batiluva (46%),
 - Nukutabua (29%),
 - Lutuya (25%)
- Extended Families (Tokatoka): 2
- Land owned by 3 mataqali
- Subsistence primarily by horticulture & fishing

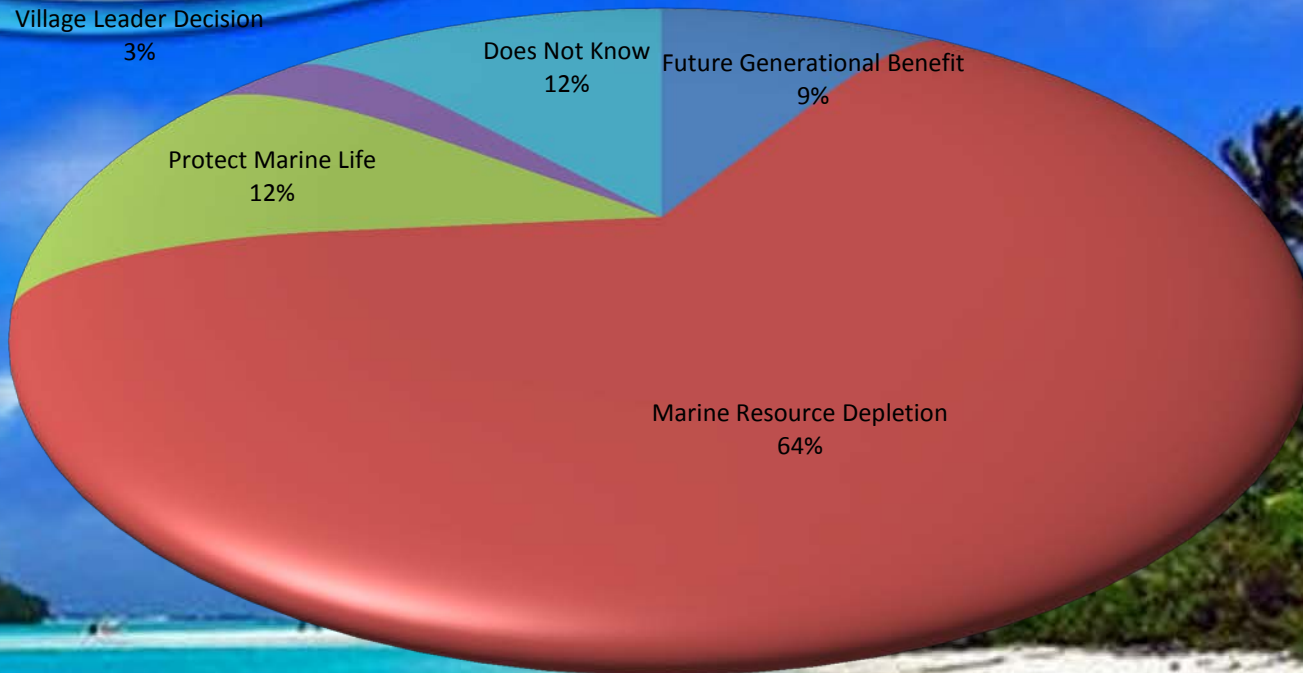


Yanuca Community on Yanuca Island



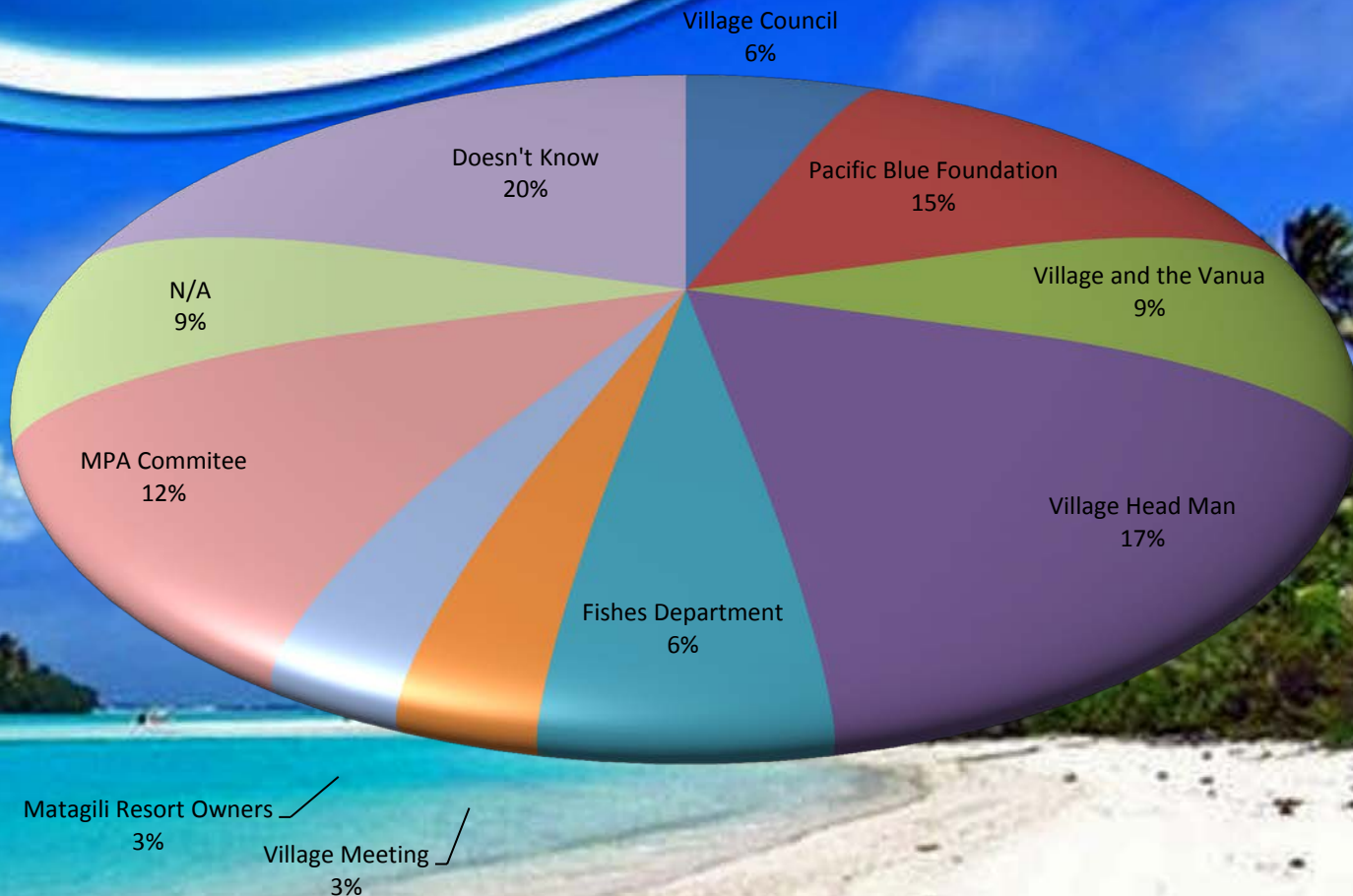
Why MCAs?

Why MCAs Created?



Idea to Create MCAs

Whose Idea was it to Create MCA?



Thoughts on MCAs

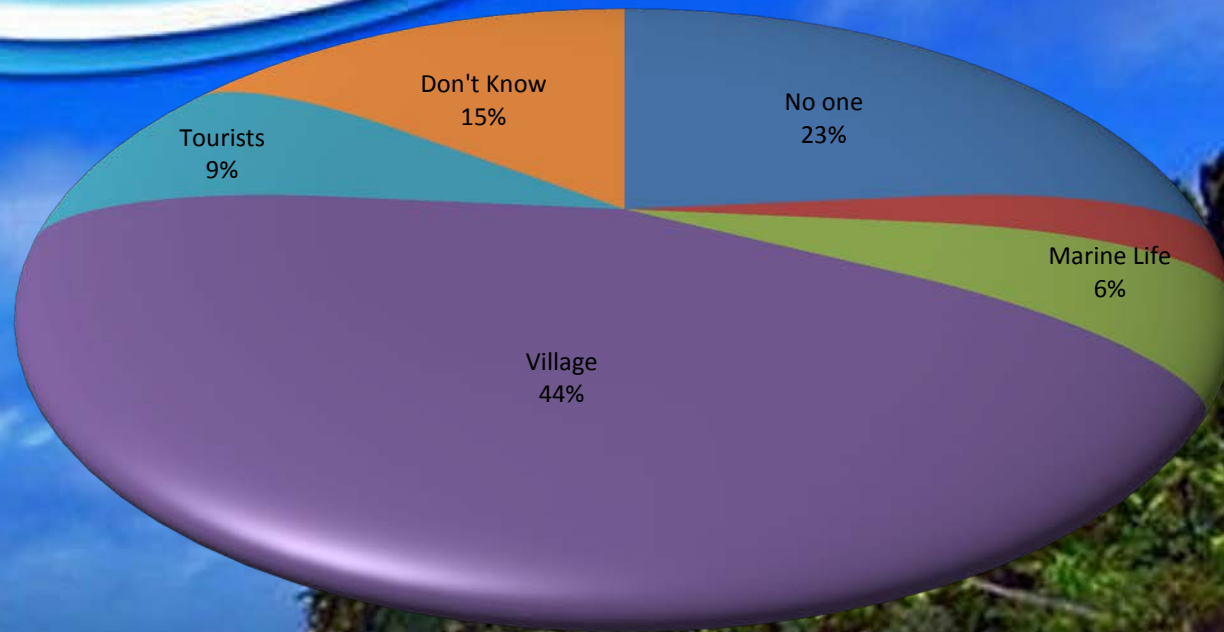
| Thoughts on MCAs | Frequency | Percent | Valid Percent | Cumulative Percent |
|--------------------------------|-----------|---------|---------------|--------------------|
| Marine Resource Restoration | 23 | 67.6 | 74.2 | 74.2 |
| Future Generational Benefits | 5 | 14.7 | 16.1 | 90.3 |
| Tourism | 1 | 2.9 | 3.2 | 93.5 |
| Income | 1 | 2.9 | 3.2 | 96.8 |
| No Outside Fishing and Selling | 1 | 2.9 | 3.2 | 100 |
| Total | 31 | 91.2 | 100 | |
| 99 | 3 | 8.8 | | |
| Missing Total | 34 | 100 | | |

Who Currently Benefits from the MCAs?

| Who Currently Benefits from the MCAs? | Frequency | Percent | Valid Percent | Cumulative Percent |
|---------------------------------------|-----------|---------|---------------|--------------------|
| No one | 8 | 23.5 | 23.5 | 23.5 |
| Poachers | 1 | 2.9 | 2.9 | 26.5 |
| Marine Life | 2 | 5.9 | 5.9 | 32.4 |
| Village | 15 | 44.1 | 44.1 | 76.5 |
| Tourists | 3 | 8.8 | 8.8 | 85.3 |
| Don't Know | 5 | 14.7 | 14.7 | 100 |
| Total | 34 | 100 | 100 | |

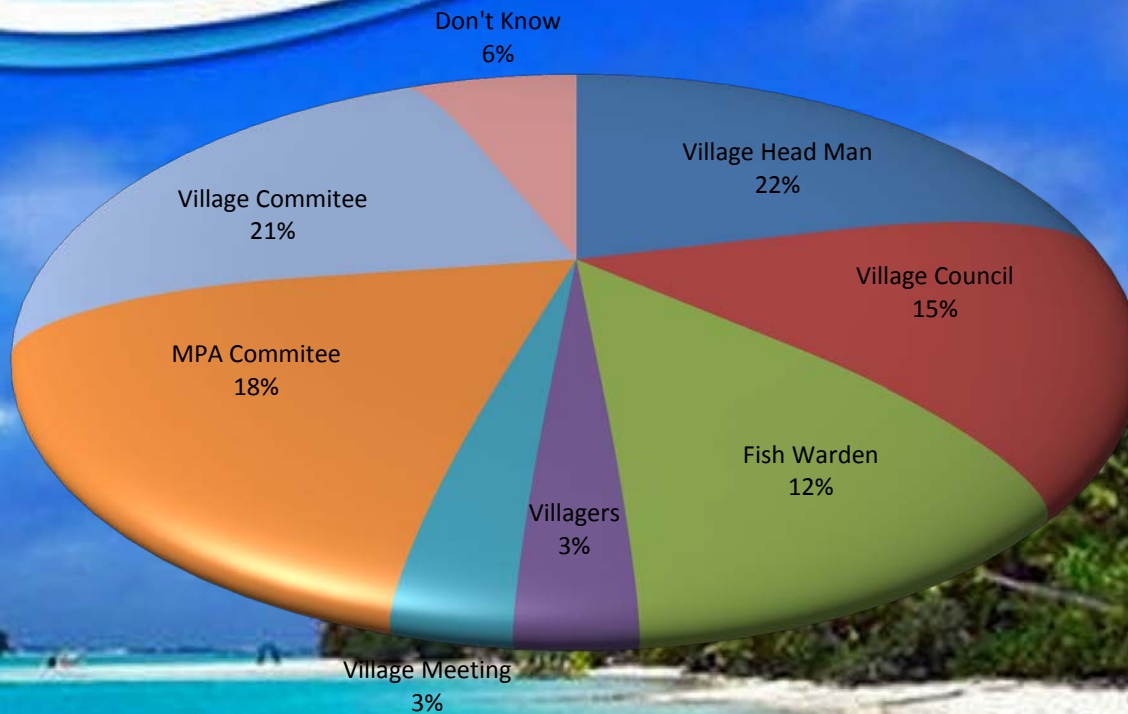
Who Benefits?

Who Currently Benefits from the MCAs?



Who Makes Decisions Regarding MCAs?

Who Makes Decisions on MCAs?

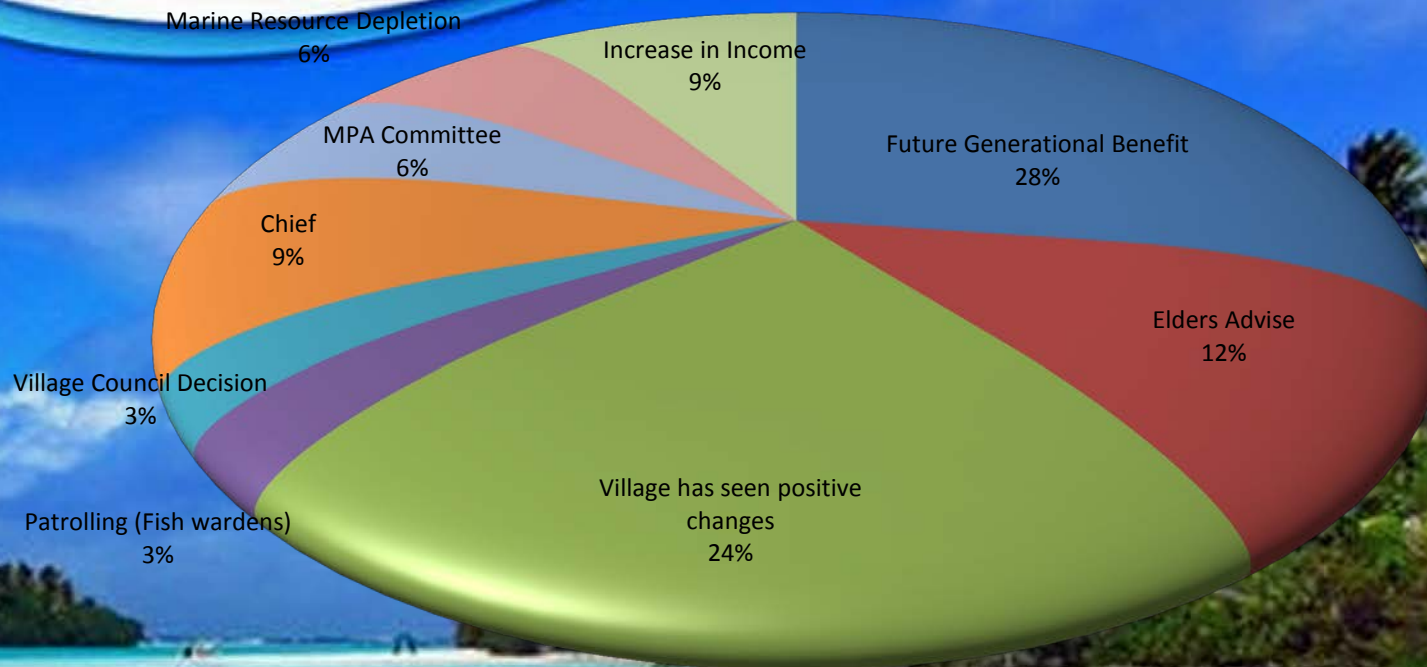


Suggestions for Improving the MCAs

| Suggestions for Improving MCAs | Frequency | Percent | Valid Percent | Cumulative Percent |
|-----------------------------------|-----------|---------|---------------|--------------------|
| Patrol | 12 | 35.3 | 35.3 | 35.3 |
| More Boats for Patrolling | 6 | 17.6 | 17.6 | 52.9 |
| Financial Assistance | 1 | 2.9 | 2.9 | 55.9 |
| More Time for MPA Development | 1 | 2.9 | 2.9 | 58.8 |
| Use One Manager of MPA | 1 | 2.9 | 2.9 | 61.8 |
| More Fish Wardens for Patrolling | 3 | 8.8 | 8.8 | 70.6 |
| Enforced Bowies | 2 | 5.9 | 5.9 | 76.5 |
| Village | 5 | 14.7 | 14.7 | 91.2 |
| More enforcement against poachers | 2 | 5.9 | 5.9 | 97.1 |
| Develop Legal Status for MPA | 1 | 2.9 | 2.9 | 100 |
| Total | 34 | 100 | 100 | |

Why Obey MPA Fishing Restrictions?

Why Comply with MCA Fishing Restrictions?

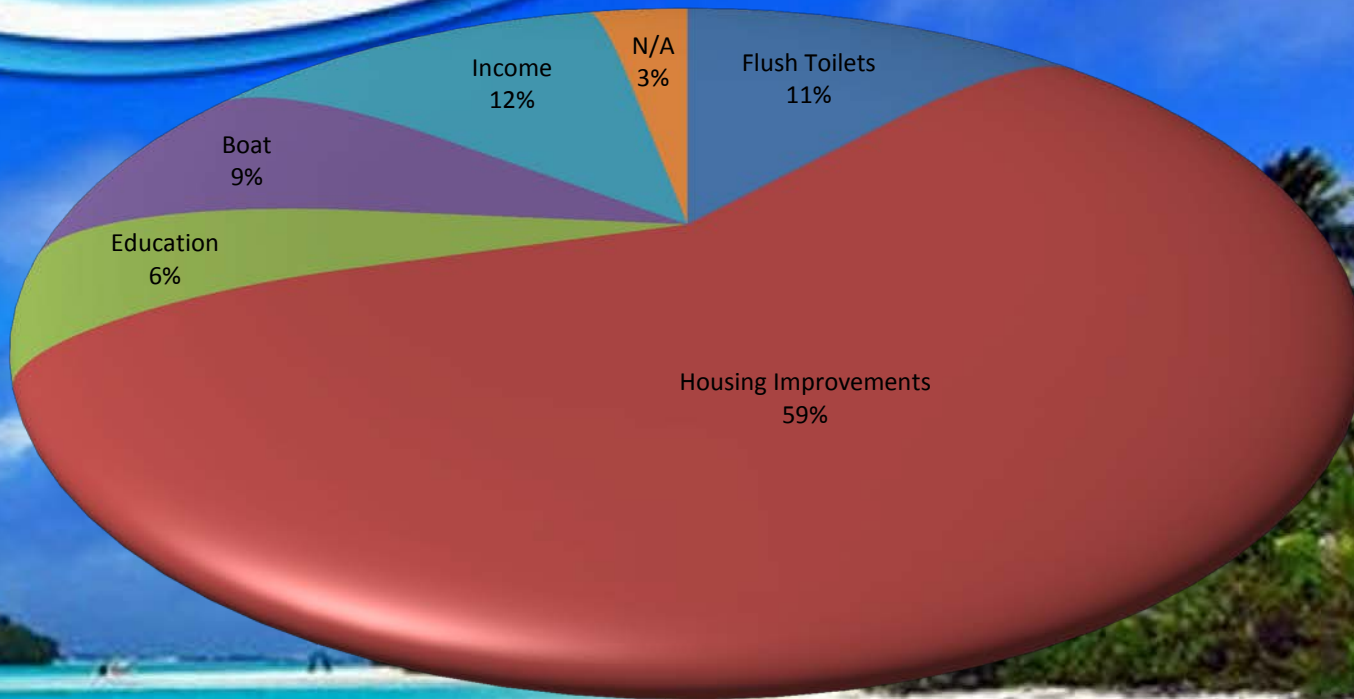


Community Quality of Life: 1st

| Community Quality of Life: 1st | Frequency | Percent | Valid Percent | Cumulative Percent |
|--------------------------------|-----------|---------|---------------|--------------------|
| Household Water Storage Tanks | 8 | 23.5 | 23.5 | 23.5 |
| Electricity | 3 | 8.8 | 8.8 | 32.4 |
| Flush Toilets | 6 | 17.6 | 17.6 | 50 |
| Solar Electricity | 1 | 2.9 | 2.9 | 52.9 |
| Village Hall | 6 | 17.6 | 17.6 | 70.6 |
| Walkway | 1 | 2.9 | 2.9 | 73.5 |
| Clean Household | 1 | 2.9 | 2.9 | 76.5 |
| Boat | 1 | 2.9 | 2.9 | 79.4 |
| Community Water Storage Tank | 1 | 2.9 | 2.9 | 82.4 |
| Medical Clinic/ Dispencery | 2 | 5.9 | 5.9 | 88.2 |
| Sell Handcrafts | 1 | 2.9 | 2.9 | 91.2 |
| Education | 1 | 2.9 | 2.9 | 94.1 |
| New Village Ditches | 1 | 2.9 | 2.9 | 97.1 |
| Bathroom | 1 | 2.9 | 2.9 | 100 |
| Total | 34 | 100 | 100 | |

Family Quality of Life: 1st

Family Quality of Life: 1st



Ranked Ideas about Cultural Loss in Yanuca: 1st

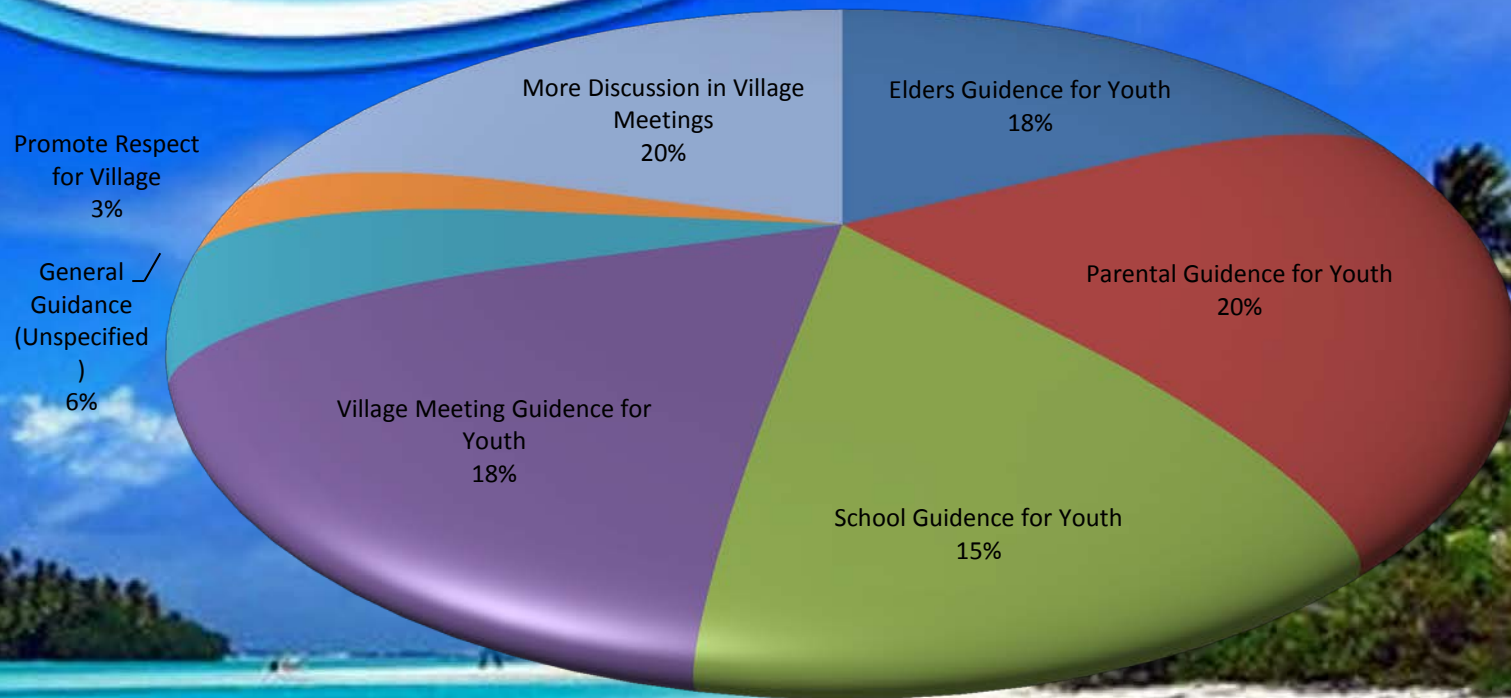
| Ranked Ideas about Cultural Loss in Yanuca: 1st | Frequency | Percent | Valid Percent | Cumulative Percent |
|---|-----------|---------|---------------|--------------------|
| Losing Traditional Style of Clothing | 13 | 38.2 | 39.4 | 39.4 |
| MOKA (Fish Trapping)/Traditional Fishing | 1 | 2.9 | 3 | 42.4 |
| Respect for Elders | 7 | 20.6 | 21.2 | 63.6 |
| Respect for Village | 6 | 17.6 | 18.2 | 81.8 |
| Legends | 2 | 5.9 | 6.1 | 87.9 |
| Not Attending to Traditional Ceremonies/Duties | 1 | 2.9 | 3 | 90.9 |
| Respect for the Chief | 1 | 2.9 | 3 | 93.9 |
| Meke (Dances) | 1 | 2.9 | 3 | 97 |
| Culture not in danger | 1 | 2.9 | 3 | 100 |
| Total | 33 | 97.1 | 100 | |
| 99 | 1 | 2.9 | | |
| Missing Total | 34 | 100 | | |

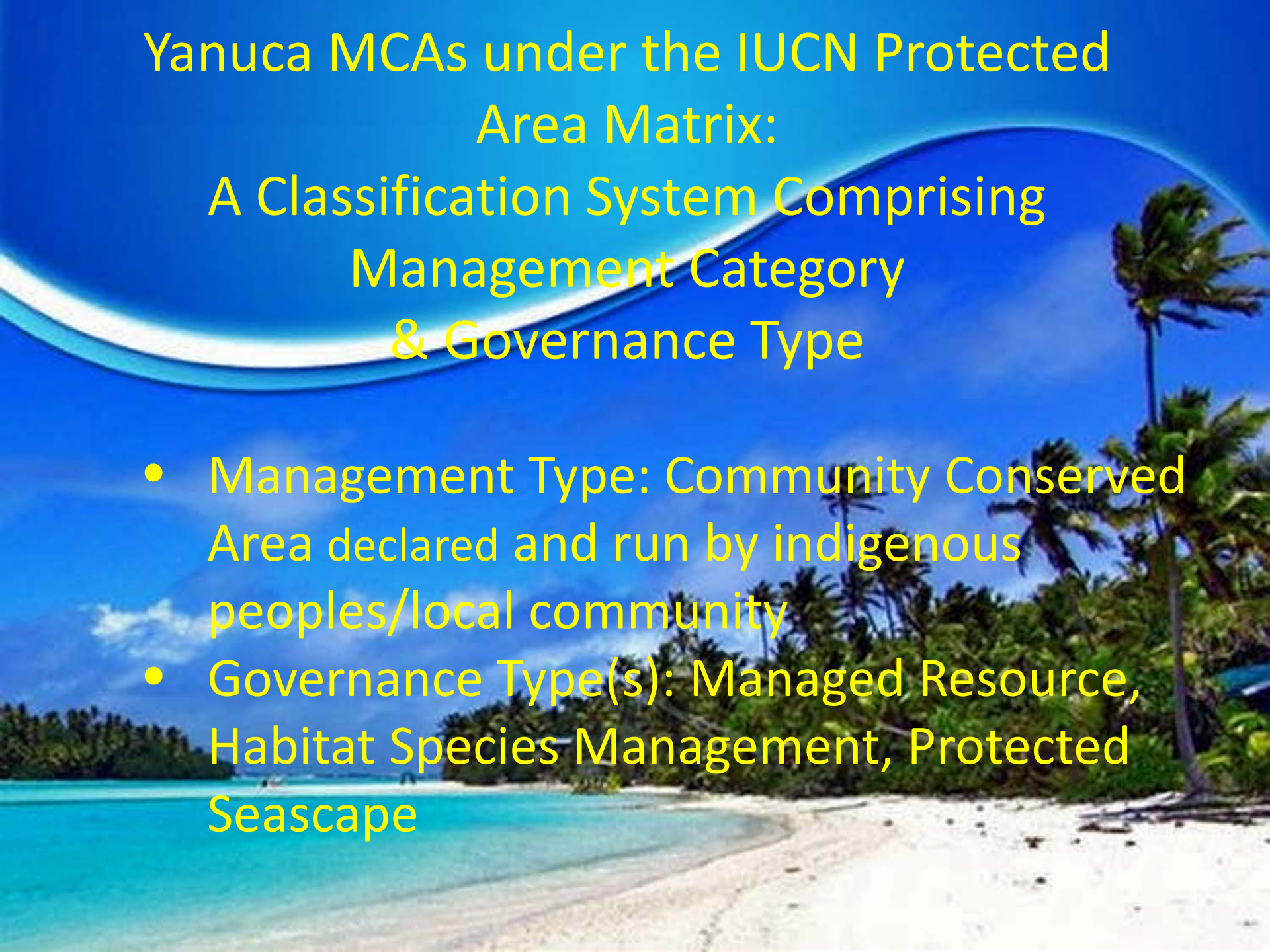
Ranked Ideas about Cultural Loss in Yanuca: 2nd

| Ranked Ideas about Cultural Loss in Yanuca: 2nd | Frequency | Percent | Valid Percent | Cumulative Percent |
|---|-----------|---------|---------------|--------------------|
| Losing Traditional Style of Clothing | 4 | 11.8 | 13.3 | 13.3 |
| MOKA (Fish Trapping)/Traditional Fishing | 1 | 2.9 | 3.3 | 16.7 |
| Respect for Elders | 6 | 17.6 | 20 | 36.7 |
| Respect for Village | 1 | 2.9 | 3.3 | 40 |
| Legends | 5 | 14.7 | 16.7 | 56.7 |
| Not Attending to Traditional Ceremonies/Duties | 4 | 11.8 | 13.3 | 70 |
| Meke (Dances) | 2 | 5.9 | 6.7 | 76.7 |
| Culture not in danger | 1 | 2.9 | 3.3 | 80 |
| Changing of Hair Style | 4 | 11.8 | 13.3 | 93.3 |
| Language | 2 | 5.9 | 6.7 | 100 |
| Total | 30 | 88.2 | 100 | |
| 99 | 4 | 11.8 | | |
| Missing Total | 34 | 100 | | |

Preserving Traditions of Yanuca Culture

Preserving Traditions of Yanuca Culture





Yanuca MCAs under the IUCN Protected Area Matrix: A Classification System Comprising Management Category & Governance Type

- Management Type: Community Conserved Area declared and run by indigenous peoples/local community
- Governance Type(s): Managed Resource, Habitat Species Management, Protected Seascape

Conclusions

Pursuant to Aichi Target 11 condition on effective and equitable management, the MCAs of the Yanuca Community have initiated the following:

- Planning efforts and development of MCAs to protect ecological integrity & protection of species, habitats, & ecosystems processes
- Participation of indigenous & local communities engaged with PBF and FLMMA for MCAs work
- Costs & benefits of MCAs are generally equally shared between Yanuca Community and Pacific Blue Foundation

